

Saving transportation space and
ocean freight



PRODUCT BROCHURE

Container House
Easy to assemble

ACCESSORIES

Includes window and door
Includes Fireproof floor
Includes electrical switch
and outlets

PRODUCT

Expandable Container House
Folding Container House
Flat Pack Container House
Detachable Container House



CONTENTS

01 About Us

02 Expandable Container House

03 Folding Container House

04 Flat Pack Container House

05 Detachable Container House

06 Project Case



ABOUT US



Tangshan Zhenxiang International Trade Co., Ltd. has been dedicating itself to one-stop solution of prefabricated houses. The service ranges from architectural design, production, storage and transportation to installation instructions and after-sales service etc.

Zhenxiang Steel, located in Tianjin City, covering an area of 62,840 square meters, with more than 1500 employees. Since the establishment in 2005, our production emphasis has gone through the transformation from building structure to integrated housing production. After years of efforts, our products have been exported to Europe, Africa, Southeast Asia, North America, South America and the Middle East. Now, its main products can be divided into five categories, which are folding container house, corrugated container house, expandable container house, detachable container house, steel frame of container house. The annual production capacity for different types of buildings can reach 500,000 square meters. We will always do best to supply the good quality products and perfect service.

OUR CUSTOMER

FACTORY

We have customers from over 40 countries, also negotiate with clients in embassy about some big projects. The quality and after sales service are satisfied by clients.



EXPANDABLE CONTAINER HOUSE

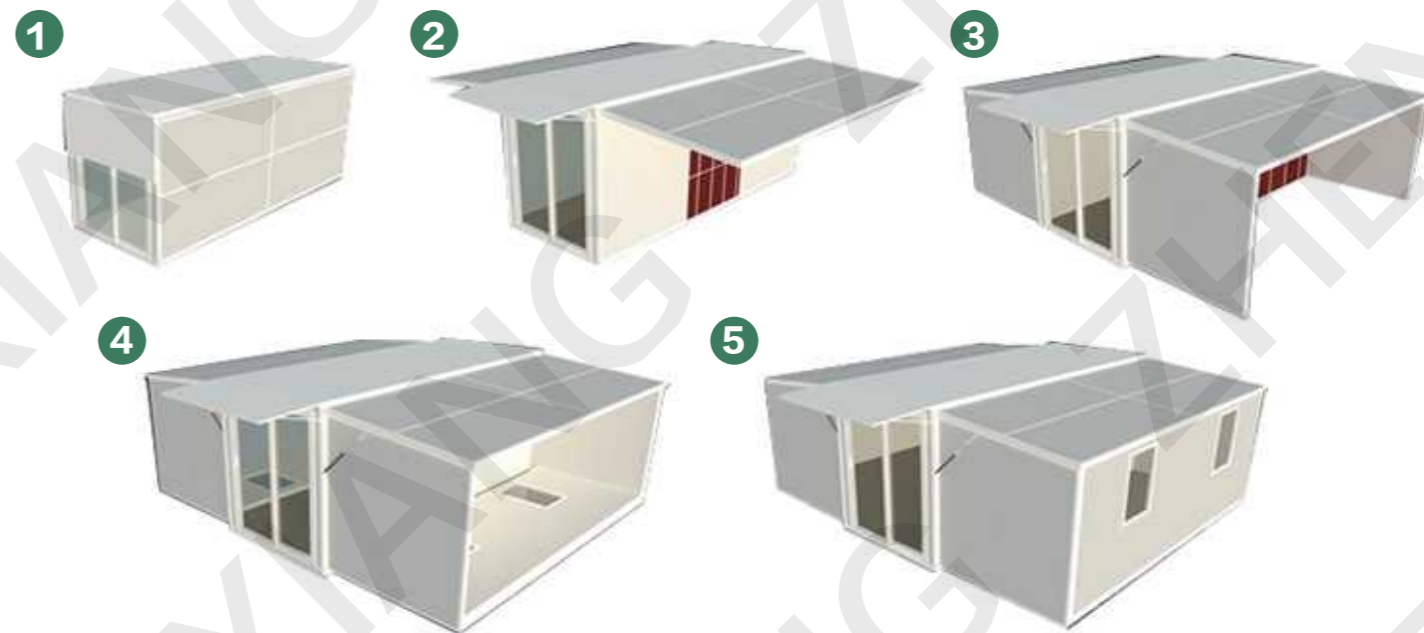


With shower and toilet, dry and wet separation wooden floor with dampproof, more comfortable

Big space	Easy installation	High comfort	Come with accessories

4 STEPS = 1 HOUR INSTALL = 1 HOUSE

I N S T A L L A T I O N



TYPE A

- Opening size : 5.8Mx4.394Mx2.5M
- Closing size : 5.8Mx0.7Mx2.5M
- Total area : 27.5m²
- 1X40HQ can load 6 units

TYPE B

- Opening size : 5.8Mx6.3Mx2.5M
- Closing size : 5.8Mx2.2Mx2.5M
- Total area : 36.54m²
- 1X40HQ can load 2 units



20FT LAYOUT



One Living room
One Bedroom
One Restroom

One Living room
One Bedroom
One Restroom

One Living room
Two Bedrooms
One Restroom



One Living room
Three Bedrooms
One Restroom

One Living room
Three Bedrooms
One Restroom

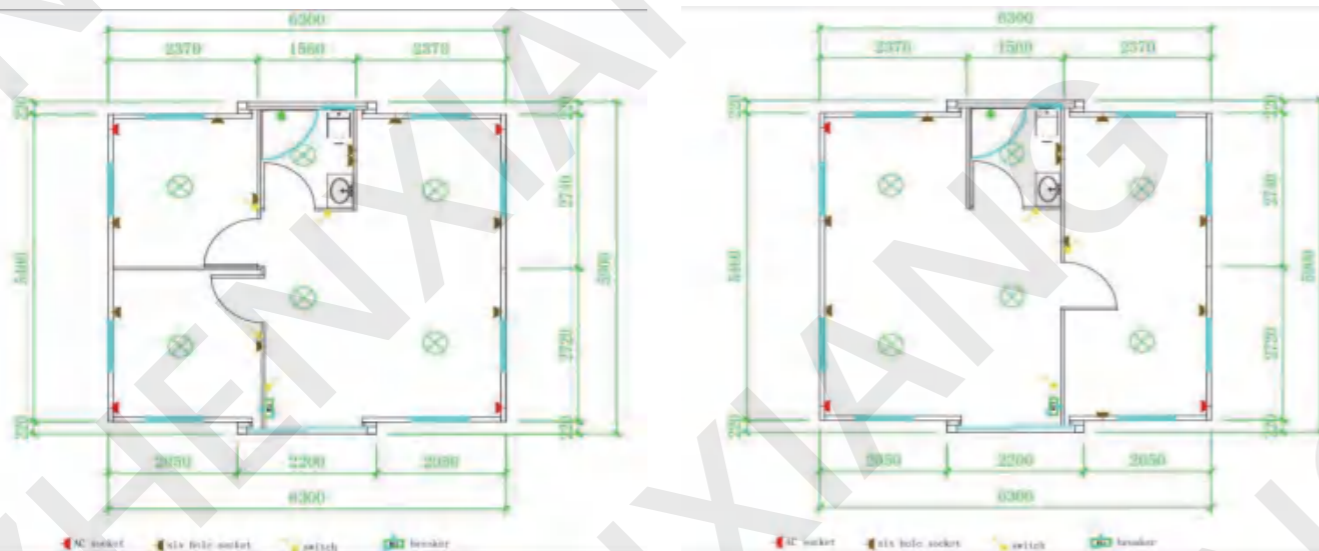
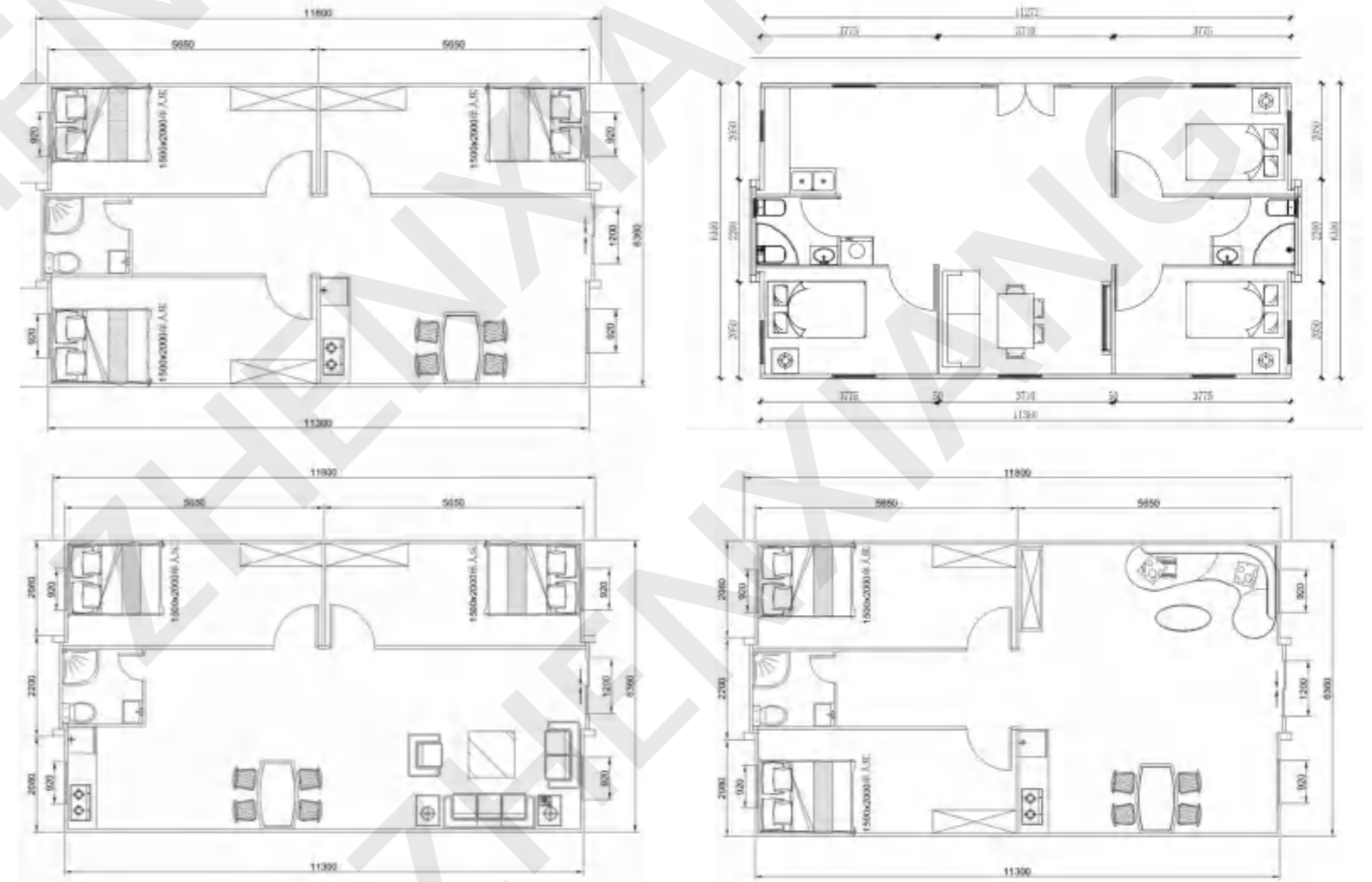
Four Bedrooms
One Restroom

40FT LAYOUT



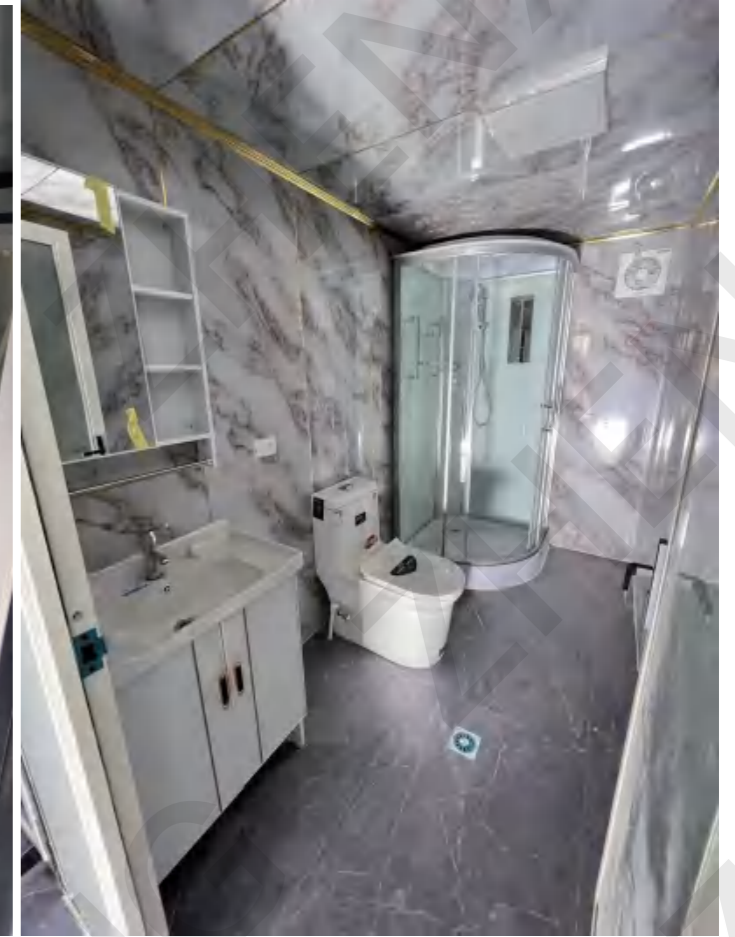
One Living room
Six Bedrooms
One Bathroom

One Living room
Five Bedrooms
Two Bathroom

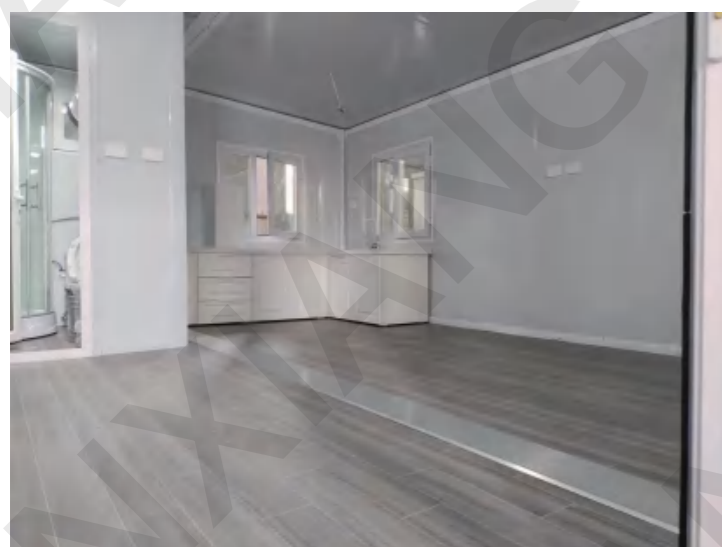


■ AC socket
 ■ six hole socket
 ■ switch
 ■ breaker

ITEM 1 Two bedroom + One bathroom + One kitchen 20FT layout



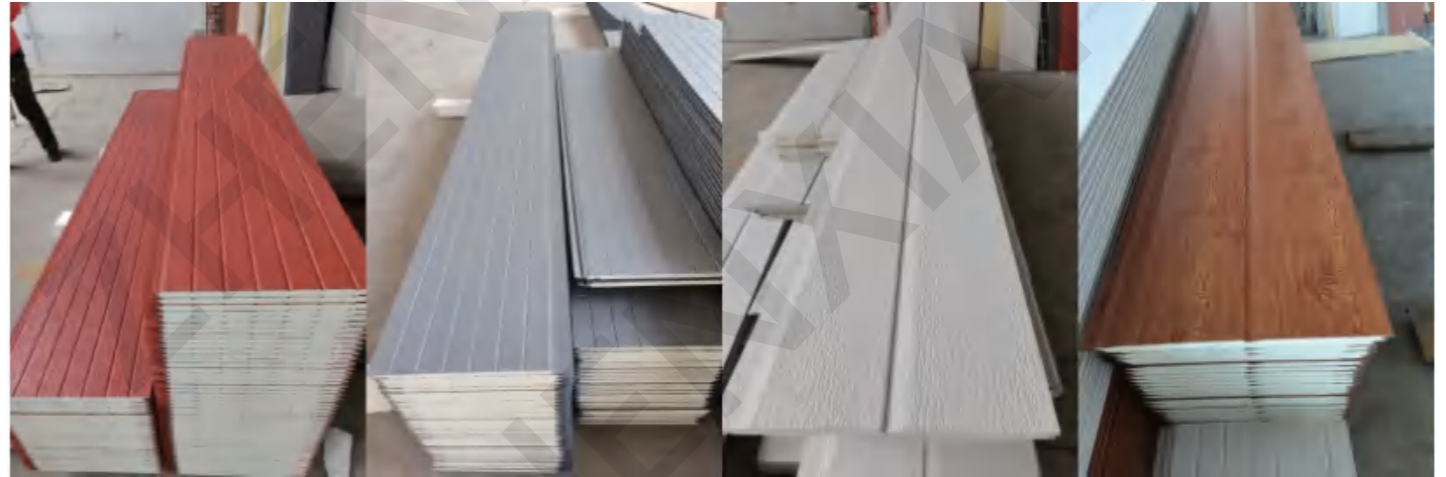
ITEM 2 Two bedroom + One bathroom + One kitchen 20FT layout



ITEM 3 Three bedroom + One bathroom + One kitchen 40FT layout



OUT SIDE WALL COLOR



EXPANDABLE CONTAINER HOUSE

The specifications of the 20ft expandable container house

Name	Specification	Size
Basic Features	External dimensions(mm)	W6300*L5900*H2480
	Internal dimensions(mm)	W6140*L5640*H2260
	Folding state(mm)	W2200*L5900*H2480
	Total weight (kg)	2500
Frame Structure	Roof beam	T2.5mmQ235B
	Insole beam	T2.5mmQ235B
	End side beam	T2.5mmQ235B
	Center column	T2.5mmQ235B
	Side wall frame	T2.0mmQ235B
	Secondary frame	T2.0mmQ235B
	Hanging head	T4mmQ235B
	Folding hinge	13mm galvanized hinge
	Overall frame protective coating	Electrostatic spray/straight white plastic powder
	Top and bottom of middle cabinet	80*100*2.5mm square tube
	Side cabinet top and bottom	40*60*2.0 mm square tube
	Top of Box	External top plate
Internal ceiling		T0.35mm 831 type internal ceiling
Wallboard	Middle roof insulation	T65mm high strength EPS, steel plate or T65mm glass wool
	Side wall, front and rear wall panels	T65mm high strength EPS, steel plate or T65mm glass wool
	Internal partition	T65mm high strength EPS, steel plate or T65mm glass wool
	Internal toilet	1700*1500(can adjusted size)

EXPANDABLE CONTAINER HOUSE

Name	Specification	Size
Floor	Central part	Fireproof glass magnesium floor (15mm)
Electrical System	Electrical wiring, installation in strict accordance with moisture-proof specifications, all electrical products must meet CE certification. Connection circuit according to circuit engineering specifications, indoor: 2 LED lights, 2 ceiling lights, 5 single socket 3, single socket 1, 10 socket 3, air conditioning socket 1, 20A leakage protector Voltage: 220V,50HZ. can do American standard, European standard, Italian standard, Australian standard and other national standard sockets and voltages.	
Security Doors	1SET (can adjustable door size and quantity and position)	
Windows	8pieces (920*920mm)	
Service Life	1 years	
Fire rating	Rate A	
Seismic grade	Grade 8	
Wind resistance level	Level 10	



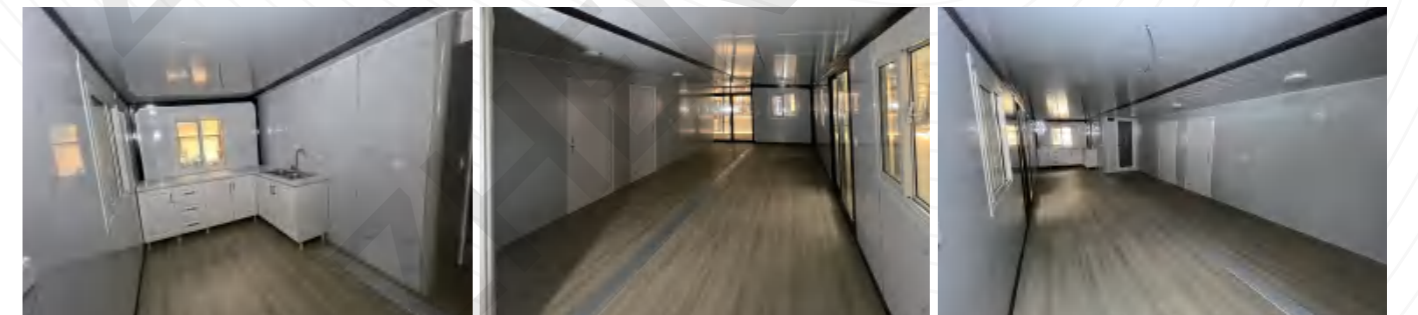
EXPANDABLE CONTAINER HOUSE

The specifications of the 40ft expandable container house

Name	Specification	Size
Basic Features	External dimensions(mm)	W6300*L11800*H2480
	Internal dimensions(mm)	W6140*L11460*H2260
	Folding state(mm)	W2200*L11800*H2480
	Total weight (kg)	5000
Frame Structure	Roof beam	T2.5mmQ235B
	Insole beam	T2.5mmQ235B
	End side beam	T2.5mmQ235B
	Center column	T2.5mmQ235B
	Side wall frame	T2.0mmQ235B
	Secondary frame	T2.0mmQ235B
	Hanging head	T4mmQ235B
	Folding hinge	13mm galvanized hinge
	Overall frame protective coating	Electrostatic spray/straight white plastic powder
	Top and bottom of middle cabinet	80*100*2.5mm square tube
	Side cabinet top and bottom	40*60*2.0 mm square tube
Top of Box	External top plate	T0.5mm galvanized sheet
	Internal ceiling	T0.35mm 831 type internal ceiling
Wallboard	Middle roof insulation	T65mm high strength EPS, steel plate or T65mm glass wool
	Side wall, front and rear wall panels	T65mm high strength EPS, steel plate or T65mm glass wool
	Internal partition	T65mm high strength EPS, steel plate or T65mm glass wool
	Internal toilet	1700*1500(can adjusted size)

EXPANDABLE CONTAINER HOUSE

Name	Specification	Size
Floor	Central part	Fireproof glass magnesium floor (15mm)
Electrical System	Electrical wiring, installation in strict accordance with moisture-proof specifications, all electrical products must meet CE certification. Connection circuit according to circuit engineering specifications, indoor: 2 LED lights, 2 ceiling lights, 5 single socket 3, single socket 1, 10 socket 3, air conditioning socket 1, 20A leakage protector Voltage: 220V,50HZ. can do American standard, European standard, Italian standard, Australian standard and other national standard sockets and voltages.	
Security Doors	1SET (can adjustable door size and quantity and position)	
Windows	10pieces (920*920mm)	
Service Life	1 years	
Fire rating	Rate A	
Seismic grade	Grade 8	
Wind resistance level	Level 10	



Verification of Conformity

No.: ICR Polska/VC/HE220805

Name and address of Applicant: Hebei Dechang Guangtai Integrated Housing Technology Co., Ltd
Shengding East Road, east side of Hengtong South Street, Fucheng County, Hengshui City, Hebei Province, China

Name and address of manufacturer: Hebei Shuo Bao New Energy Technology Co., Ltd
Shengding East Road, east side of Hengtong South Street, Fucheng County, Hengshui City, Hebei Province, China

Product name: expandable container house

Product types: dgctsy-63118-001, dgctsy-63118-002, dgctsy-63118-003, dgctsy-63118-004, dgctsy-63118-005, dgctsy-63118-006, dgctsy-63118-007, dgctsy-63118-008, dgctsy-63118-009, dgctsy-63118-010, dgctsy-6359-001, dgctsy-6359-002, dgctsy-6359-003, dgctsy-6359-004, dgctsy-6359-005, dgctsy-6359-006, dgctsy-6359-007, dgctsy-6359-008, dgctsy-6359-009, dgctsy-6359-010, dgctsy-6390-001, dgctsy-6390-002, dgctsy-6390-003, dgctsy-6390-004, dgctsy-6390-005, dgctsy-6390-006, dgctsy-6390-007, dgctsy-6390-008, dgctsy-6390-009, dgctsy-6390-010

Product trademark: n/a

This document confirms that the product sample meets the requirements of the following standards:

- Related with Regulation (EU) 2021/1163
- EN 1090-1:2009+A1:2011

The assessment process has been carried out in accordance with individual rules and conditions agreed with the applicant. Evaluation has been carried out in accordance with:

Test reports: CE-HE220805-HBDC-1

Tests conducted by: Hebei Dechang Guangtai Integrated Housing Technology Co., Ltd

Issue date: 25.08.2022

Expiration date: 24.08.2027

Remarks:
This verification of conformity refers to the above mentioned product and its conformity in regards of above mentioned standards was proven on test sample.
This verification of conformity was issued on voluntary basis and does not imply meeting all essential requirements, assessment of the self-production or any other restricted facilities bodies conformity assessment procedure appropriate for the product.

CE marking results:
mark is not sanctioned by the following verification of conformity mark given here as reference, can be only use by the manufacturer after applying all essential requirements from relevant directives

document status can be checked: <https://vcr.icrpolska.com/>

ICR Polska Co. Ltd.
www.icrpolska.com
icrpolska@icrqa.com

Director Rafal Kalnowski
Warsaw, 25.08.2022

Europa Credit Evaluation CERTIFICATE

No. ECE-HBDC-2208-26A

After the assessment:

Hebei Dechang Guangtai Integrated Housing Technology Co., Ltd.
Shengding East Road, east side of Hengtong South Street, Fucheng County, Hengshui City, Hebei Province

Assess compliance with the terms of the Convention on International Requirements and methods for credit evaluation.

AAA

Credit guarantee credit rating:

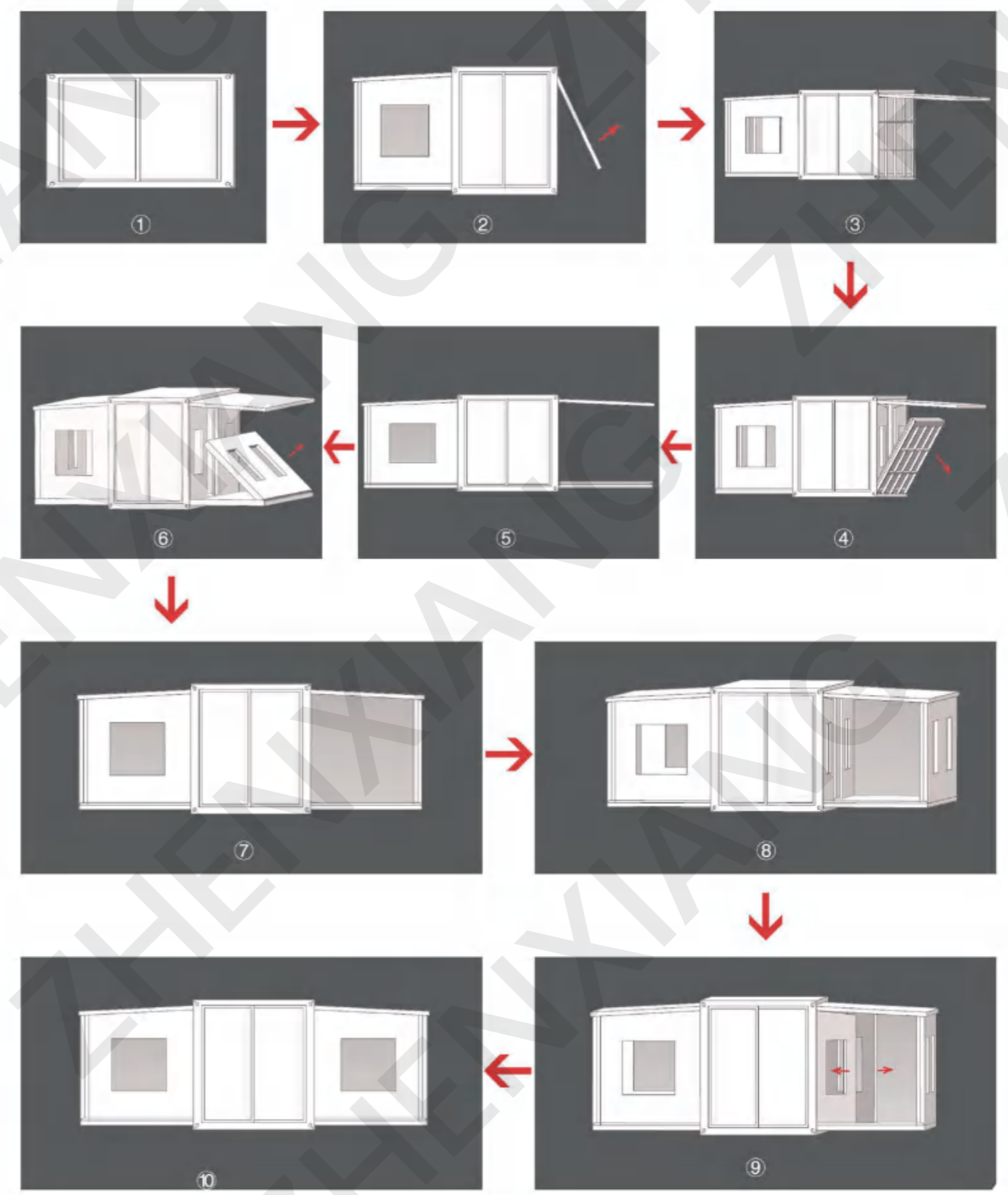
A+ Good profitability structure intact, with prospects
A- Tax law to prove integrity, financial condition
A Have the ability to repay debt

Conclusion: EUROPE CREDIT EVALUATION ASSOCIATION has forensic authenticity and validity of corporate legal qualification, and their situation of business and financial condition. potential of developing product (services) to assess the quality and safety inspection.

Date of issue: 26.Aug.2022
Expiry Date: 25.Aug.2029

GENERAL MANAGER

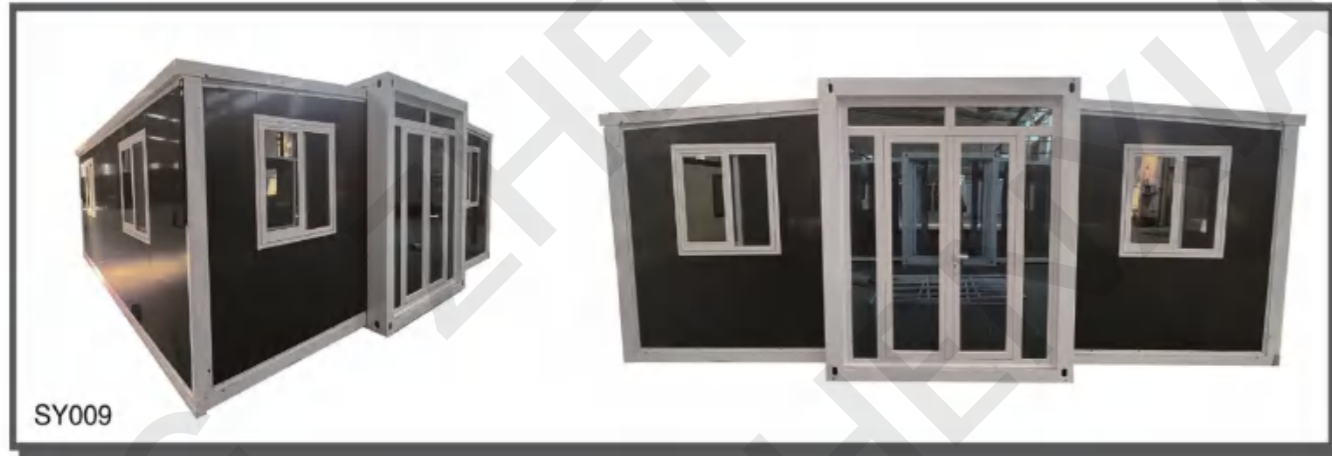
EUROPE CREDIT EVALUATION ASSOCIATION
FIFTH FLOOR 3 GOWER STREET LONDON UNITED KINGDOM W1C 2EA
Tel: +440 2024681033 Fax: +440 2072788555
Web: www.ecra.org.uk



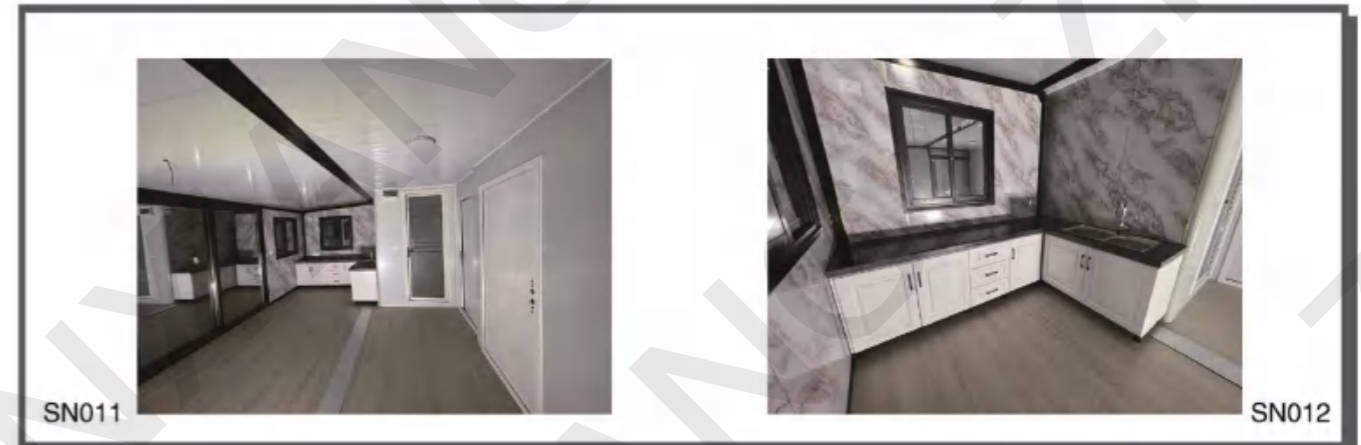
APPEARANCE GALLERY



APPEARANCE GALLERY

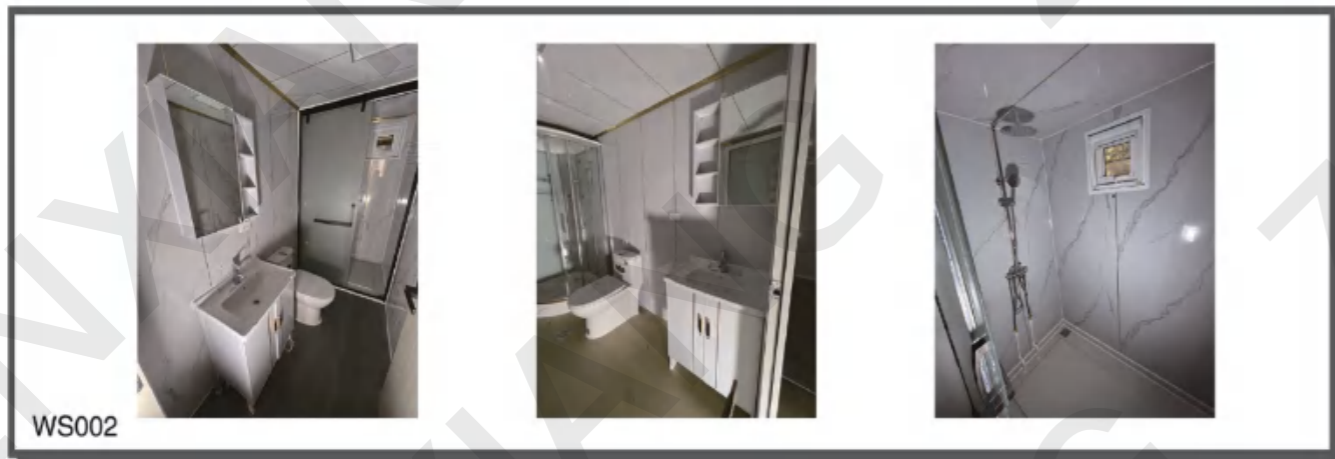
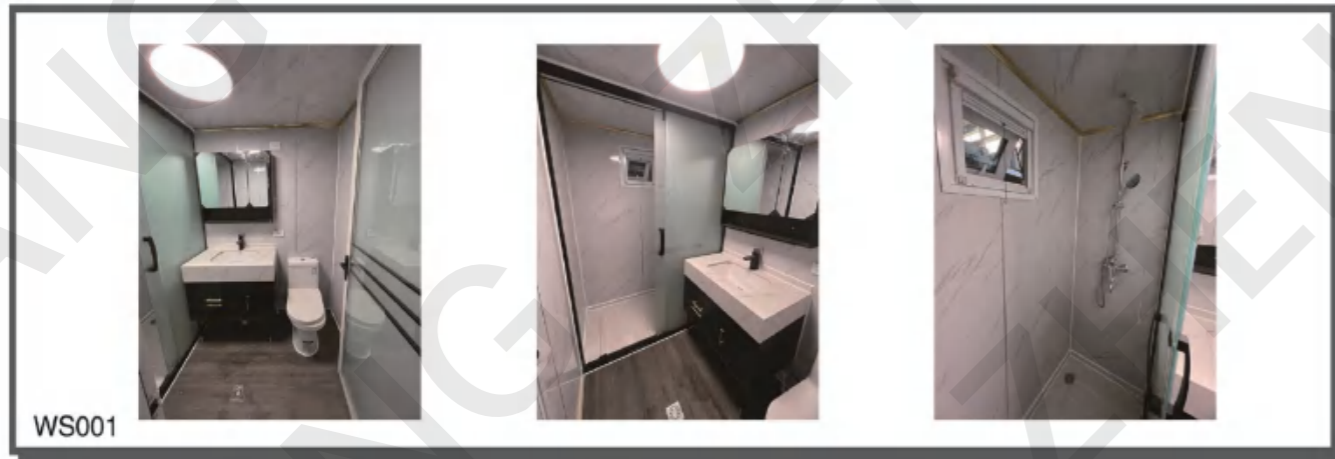


INDOOR DISPLAY



INDOOR DISPLAY

SOCKET STYLES

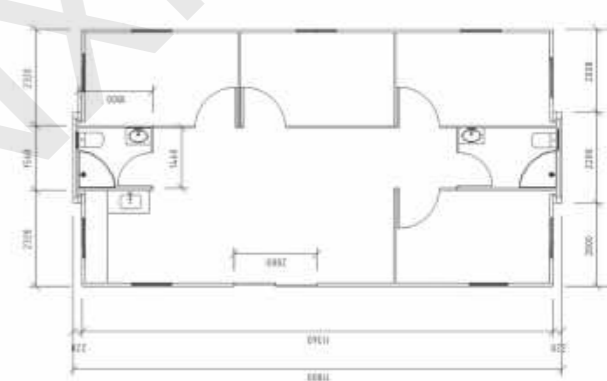
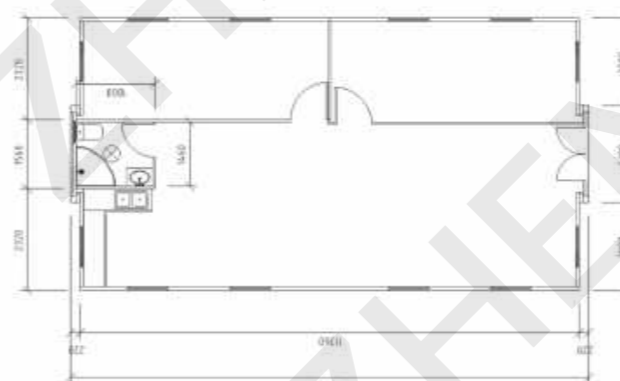
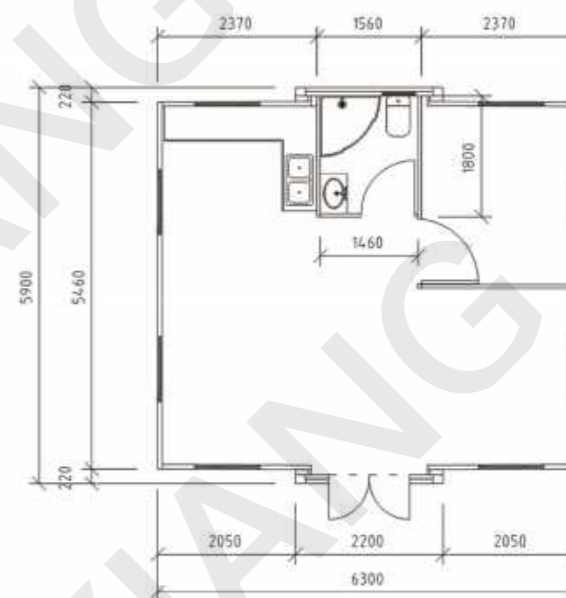
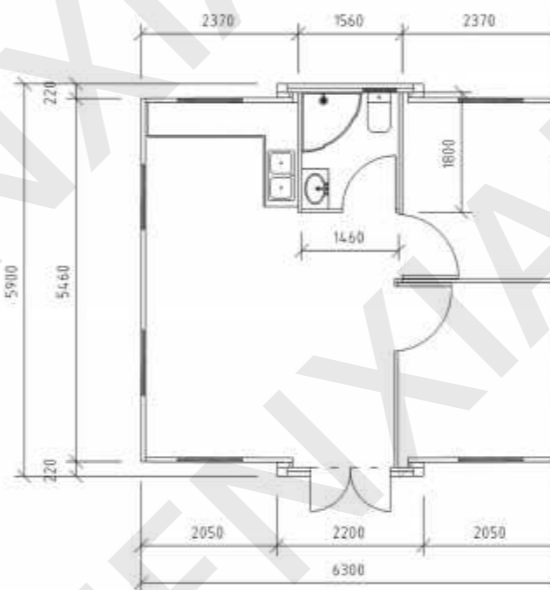
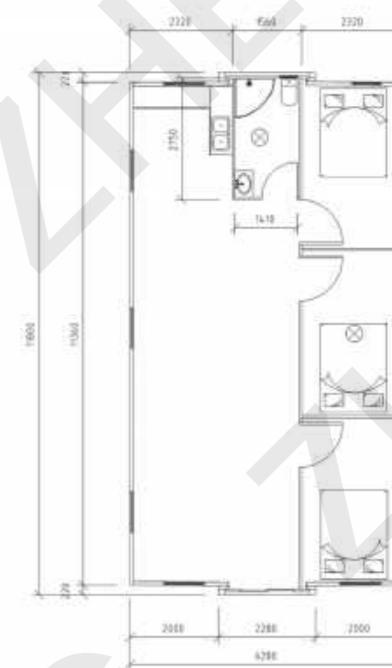
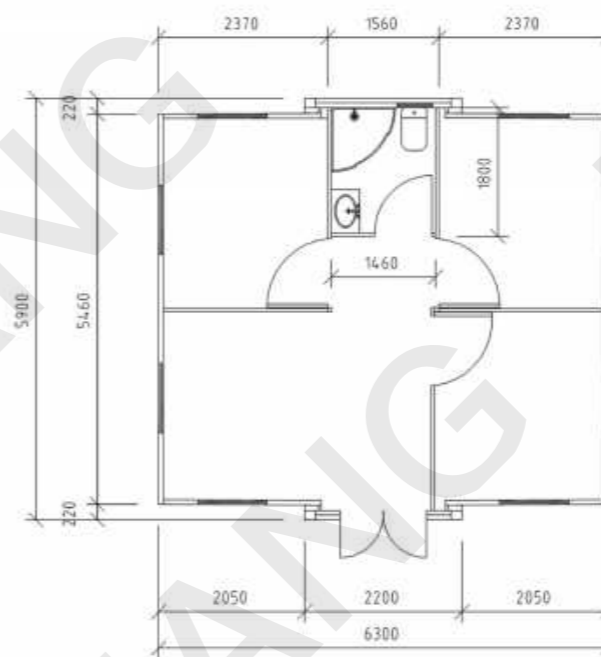


BREAKER STYLES

SWITCH STYLES



FLOOR PLANS



TRANSPORTATION



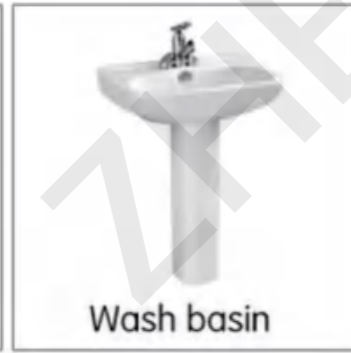
BATHROOM



Shower room



Toilet



Wash basin



I type Straight cupboard

FLOOR STYLE



F103



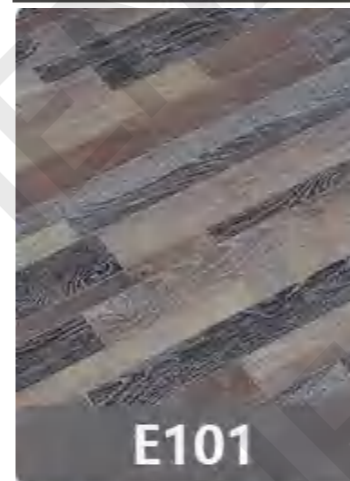
F109



F204



F205



E101



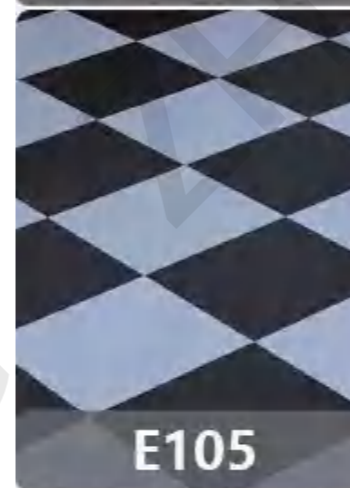
E102



E103



E104



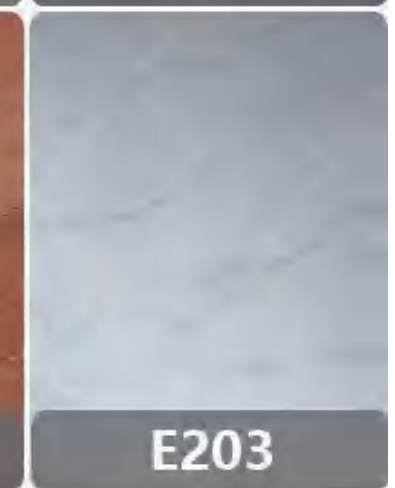
E105



E106



E107



E203











FOLDING CONTAINER HOUSE



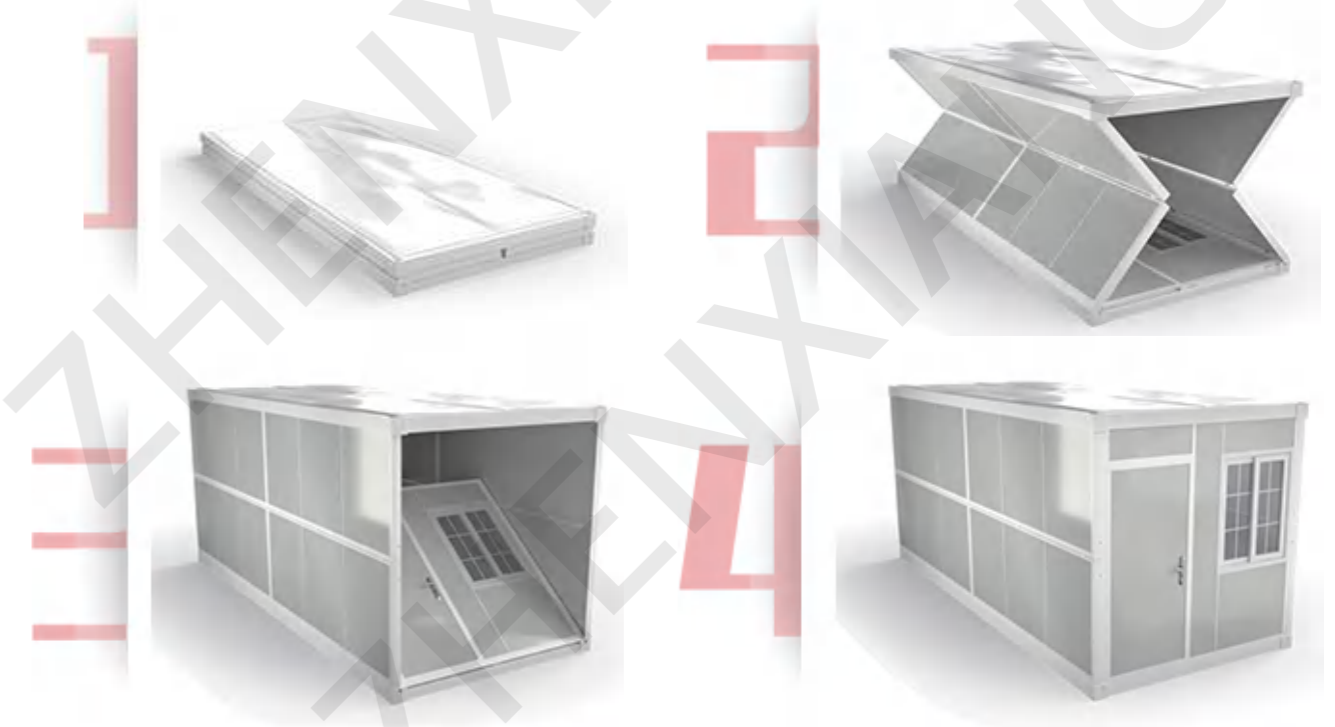
We can also customize the container house for clients as their requirement, such as the frame, color etc, to DIY one unique house



I N S T A L L A T I O N

 Minimizing transport cost	 Sound insulation	 Cold resistance	 Beautiful	 Durable
 Fire proof	 Wind proof	 Anti-knock	 Cloudburst proof	 Waterproof

4 STEPS = 4 MINUTES = 1 HOUSE





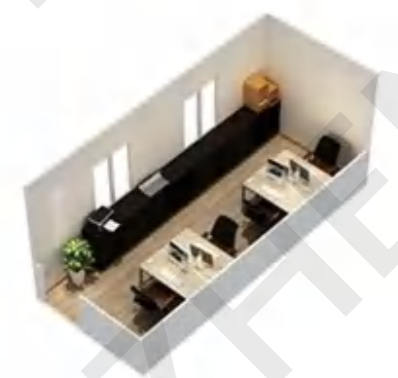
INTERNAL LAYOUT



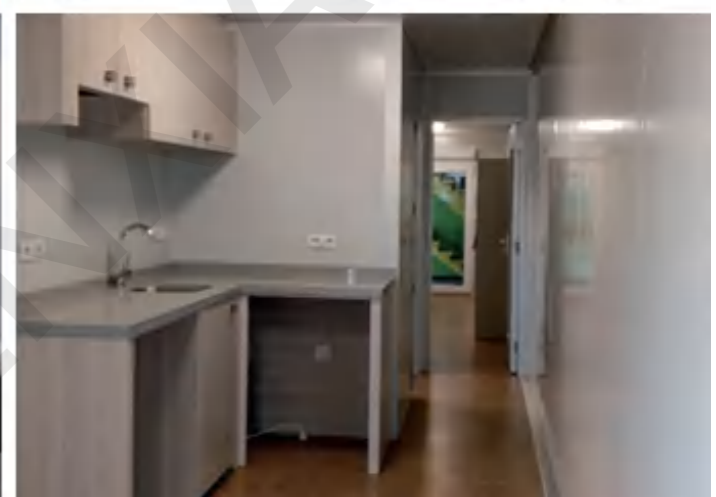
20FT container house can be used as a beautiful office



20FT container house with 2 bedrooms and 1 bathroom



20FT container house can be used as a comfortable lounge



DOOR & WINDOW



Entry door



Aluminum Window



PVC Window

FLOOR

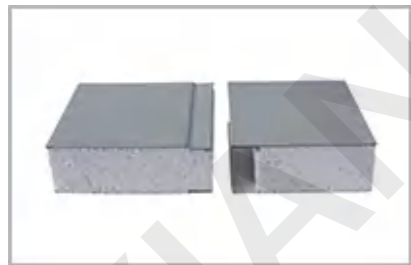


Sample Picture



PVC Floor

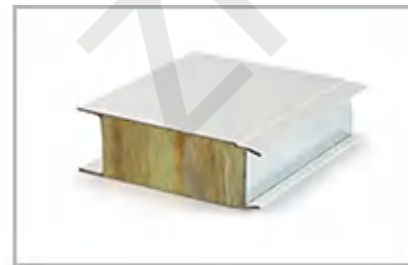
WALL AND ROOF PANEL



EPS

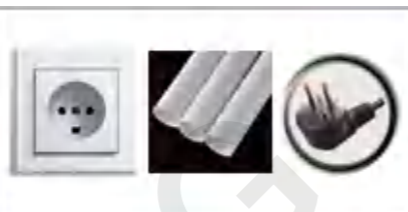
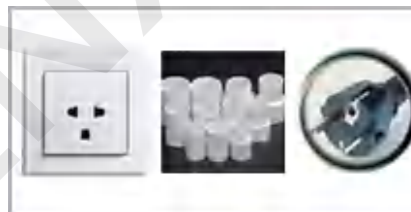


Glass Wool



Rock Wool

ELECTRIC AND PLUMBING SYSTEM



BATHROOM



A P P E A R A N C E



STANDARD MODEL



CORRUGATED SHEET MODEL



CAMOUFLAGE MODEL



WOOD GRAIN MODEL

C O N S T R U C T I O N



SINGLE FLOOR
(with external accessories)



TWO FLOORS
(with ladder)



MULTIPLE
(can be combined several units together)

FOLDING CONTAINER HOUSE

Name	Specification	Size	Quantity	Unit
Form 1	Standard container	External size: 5800mm*2500mm*2450mm Internal size: 5650mm*2350mm*2230mm Folding size: 5800mm*2500mm*400mm Weight: 1.3MT	1	Set
Frame	Top girder	Special shaped steel galvanized concave convex pipe 63mm*80mm*1.5mm (both sides)	3	Piece
	Bottom girder	Special shaped steel galvanized concave convex pipe 63mm*160mm*2.0mm (both sides)	3	Piece
	Top beam	Galvanized square pipe 50mm*50mm*1.8mm	6	Piece
	Front and rear end girder	Special shaped steel galvanized concave convex pipe 63mm*80mm*1.5 (both sides)	4	Piece
	Sidewall frame	Special shaped steel galvanized concave convex pipe 63mm*80mm*1.5 (both sides)	8	Piece
	Bottom crossbeam	Galvanized square steel pipe 40mm*80mm*2.0mm	4.5	Piece
	Cast steel butt joint Corner Fitting	Steel plate (200mm*100mm*15mm)	8	Piece
	Folding hinge	Galvanized hinge 85mm*115mm*3mm (Shaft column 304 stainless steel)	36	Piece
	Integral frame protective coating	Cabaret high gloss enamel	1	Set
	Top of container	External roof	104 color steel tile (0.5mm)	6
Internal ceiling		831 ceiling tile (0.326mm)	7	Piece
Insulation rock wool		Bulk density 60kg/m ³ *14.5square	14.5	m ²

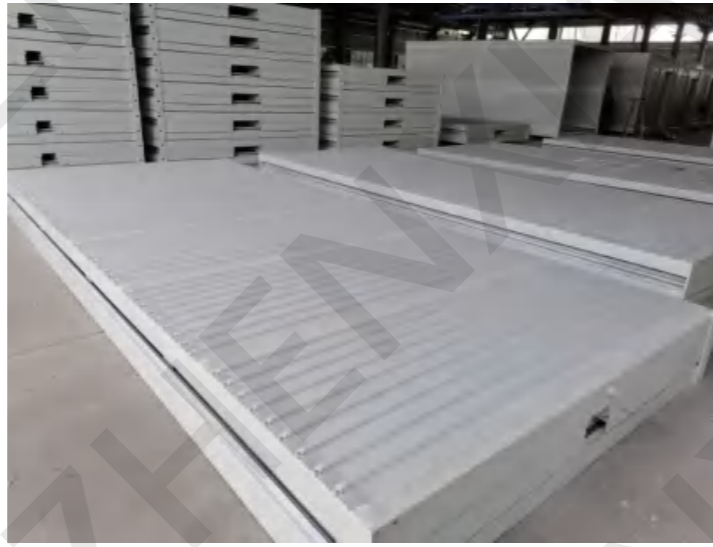
FOLDING CONTAINER HOUSE

Name	Specification	Size	Quantity	Unit
Floor	Grade A fireproof glass magnesium plate	15mm	5	Piece
Wallboard	Heat insulation rock wool color steel composite sandwich panel (side wall)	0.326mm color steel plate / 50mm / 65kg / m ³ rock wool	8	Piece
	Heat insulation rock wool color steel composite sandwich panel (Front and rear walls)	0.326mm color steel plate / 50mm / 65kg / m ³ rock wool	6	Piece
Window	Aluminum alloy anti-theft integrated window (push-pull Series)	950mm*1200mm (With screen window)	2	Piece
Door	Special anti-theft door for folding container	860mm*1980mm	1	Piece
Electrical system	Circuit protector		1	Set
	Industrial plug and socket		2	Set
	Single tube LED light		1	Set
	Special socket for air conditioner		1	Set
	Light switch		1	Set
Roof load			≧50kg/m ²	
Floor load bearing			≧150kg/m ²	
Aisle bearing capacity			≧200kg/m ²	
Wall side pressure			≧80kg/m ²	
Fire rating			Class A fire protection	
Wall deformation coefficient			≧300kg/m ²	
Earthquake resistance			10 earthquake resistance	
Wind resistance			level 10 wind resistance	

Frame



External roof



Window



Door



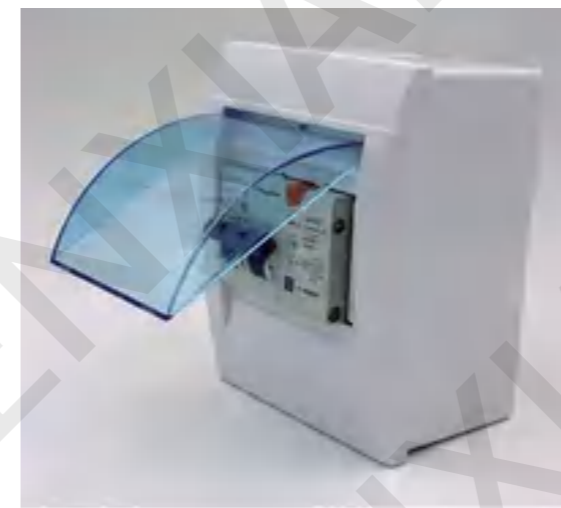
Internal ceiling



Insulation rock wool



Circuit protector



Industrial plug and socket



Floor



Wallboard

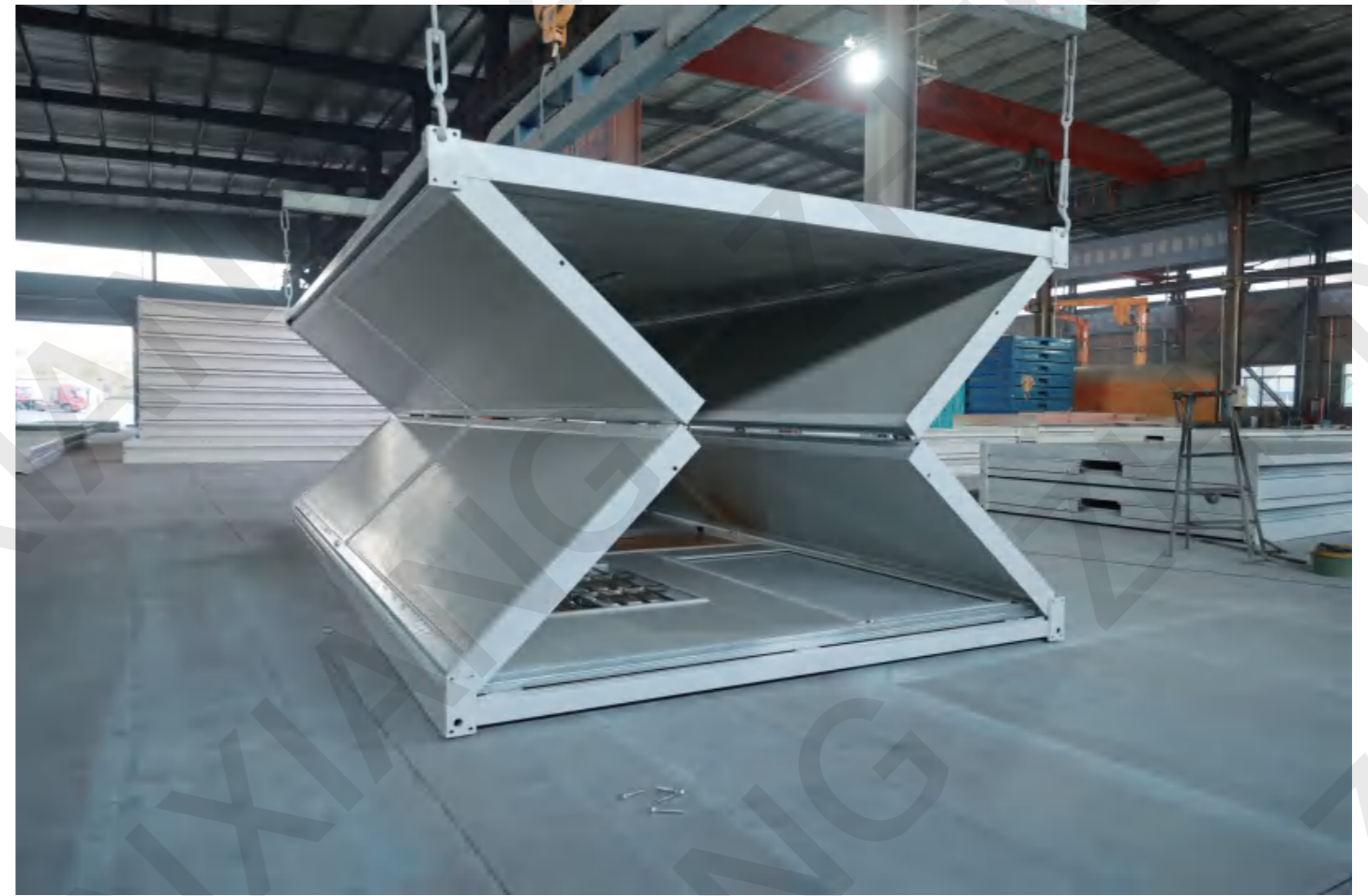


Single tube LED light

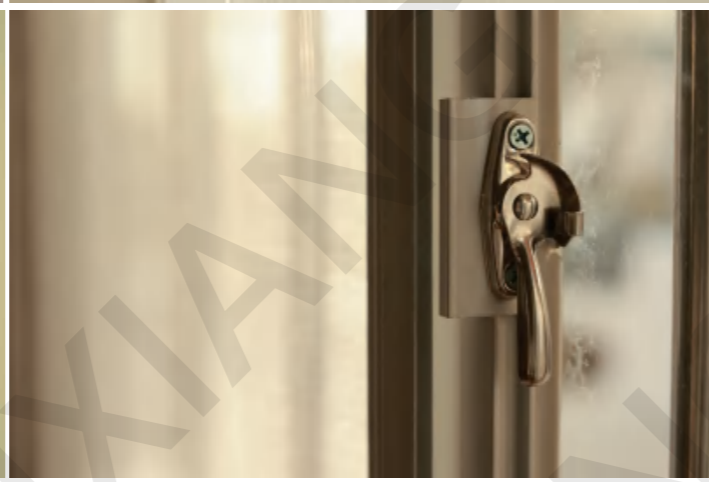


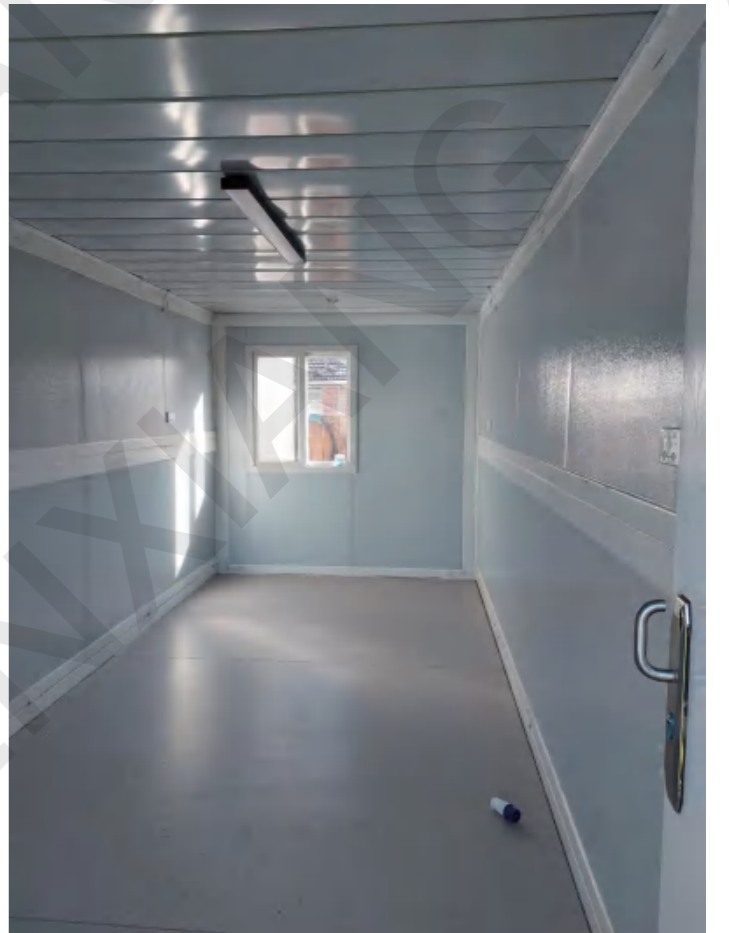
Light switch















TRANSPORTATION



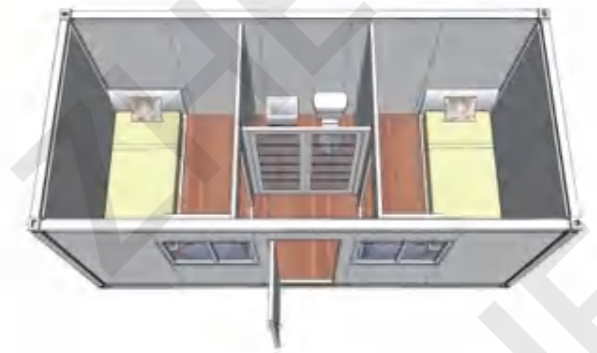
FLAT PACK CONTAINER HOUSE



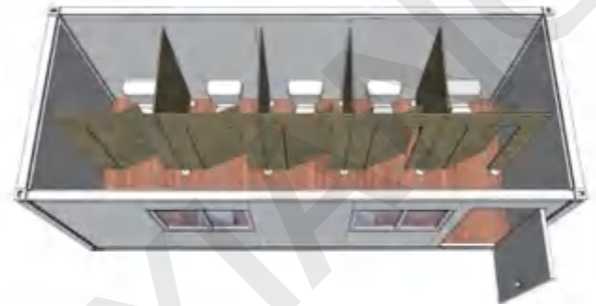
INTERNAL LAYOUT



One Bedroom Container House



Two Bedrooms Container House



Container Toilet



Container Office



While the frames of the detachable container are connected by bolts



Fireproof



Windproof



Waterproof



Sound insulation



Cold resistance

40 HP can load 6-8 units

ACCESSORIES



TRANSPORTATION



FLAT PACK CONTAINER HOUSE

External dimensions(L*W*H)	5800*2438*2550mm	
Internal dimensions(L*W*H)	5660*2180*2310mm	
Package dimensions(L*W*H)	5800*2438*710mm	
Specification	Size	Quantity
MAIN FRAME 2.5mm	2.5mm galvanized form beam, galvanized content 80g/m ² , 170mm wide, 5380mm length	2 pcs
	2.5mm galvanized form beam, galvanized content 80g/m ² , 170mm wide, 2118mm length	2 pcs
	Galvanized C80*1.2mm cross brace, galvanized content 80g/m ²	6 pcs
	30*30*1.0mm square tube galvanized*2	2 pcs
	20*20*1.0mm galvanized square tube 1	1 pcs
Bottom frame	2.5mm galvanized form beam, galvanized content 80g/m ² , 160mm wide, 5380mm length	2 pcs
	2.5mm galvanized form beam, galvanized content 80g/m ² , 160mm wide, 2118mm length	2 pcs
	steel profile 1.2m	9 pcs
	Integrated trough for flooding and edging at the bottom of the wall panel 5630mm	2 pcs
	Integrated trough for flooding and edging at the bottom of the wall panel 2690mm	2 pcs
Column	2.5mm galvanized column, galvanized content 80g/m ² 210 wide, 150 wide and 2180mm high	4 pcs
	Connector 8.0mm, galvanized content 80g/m ²	8 pcs
	Reinforced L-shaped column	8 pcs
Galvanized corner fittings	3.5mm upper corner piece, galvanized content 80g/m ² 210*150*210mm	4 pcs

FLAT PACK CONTAINER HOUSE

Specification		Size	Quantity
MAIN FRAME 2.5mm	Galvanized corner fittings	3.5mm bottom corner piece, galvanized content 80g/m ² 210*150*160mm	4 pcs
	Single tile roofing	0.45mm color steel single tile, 360° joint, special waterproof method	1 set
	Top insulation	75mm glass wool insulation layer 14kg/m ³	1 set
	Color	Baking paint (electrostatic spraying)	1 set
	Screw bolt	Inner hexagon (galvanized)	48 pcs
Downspouts		∅50mm downspout	4 pcs
Ceiling tiles		0.35mm, 831 color steel integrated ceiling board, coated	1 set
Ceiling moldings		Ceiling angle iron, fixed ceiling tile	3 pcs
Floor	Calcium silicate board	18mm thick, 1177*2820mm	5 pcs
	Plastic flooring	1.6mm Plastic flooring	1 set
Corner line		Color steel corner line, white gray	4 pcs
Accessories		Screws, internal box connectors, 1 roll of waterproof stickers	1 set
Electrical accessories		2 LED lights 36w 100v corresponding to broadband	1 set
Steel door		840*2030 high-grade fireproof lock	1 set
Plastic steel anti-theft window		1130×1100mm double glass with frame	2 set
Wall board		50mm foam board, double-sided iron sheet 0.28/0.28mm, bulk density 12kg/m ³ , one orange peel pattern, one flat double film	1 set
Insulation		λ=0.036W/m·K	Wind resistance 0.50kN/m ²
Sound insulation		Sound insulation ≥25dB	Fireproof performance Level A
Waterproof performance		Organized internal drainage pipes	Seismic performance Level 8
Floor bearing capacity		2.0kN/m ²	Live load on the roof 0.8kN/m ²
Design period		20 years	
Sound insulation performance		Sound insulation ≥25dB	
Waterproof performance		Organized internal drainage pipes	





DETACHABLE CONTAINER HOUSE

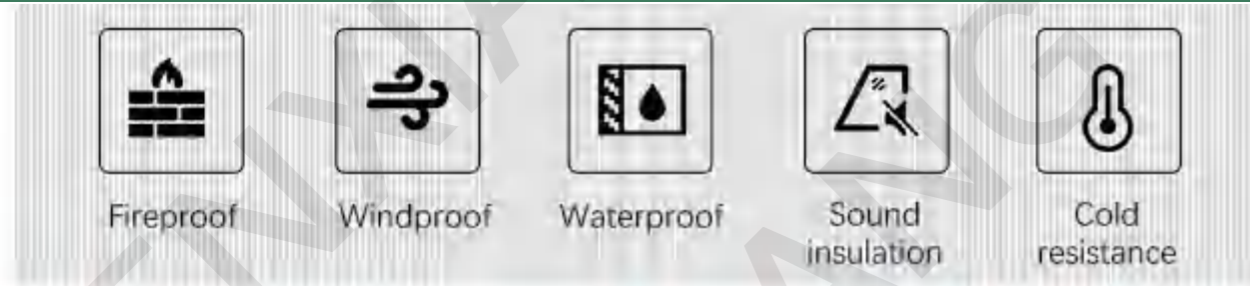
ACCESSORIES



TRANSPORTATION



Saving transportation space and ocean freight.
Easy to carry, mobile and stackable.



40 HQ can load 13-18 units

DETACHABLE CONTAINER HOUSE

Name	Specification	Size
Standard house	External size (L*W*H)	5950*3000*2800mm
	Inner size(L*W*H)	5750*2800*2500mm
Technical data	Heat insulation	$\lambda=0.048W/m\cdot K$
	Sound Insulation	$\geq 30dB$
	Waterproof grade	II
	Ground load	2.0kN/m ²
	Windproof grade	0.60kN/m ²
	Fireproof grade	A
	Seismic grade	8
	Roof load	1.0kN/m ²
Structure	Frame	Galvanized steel, thickness 2.3mm
	Corner Connector	Thickenss 4.0mm
	Top Purlin	Galvanized steel, thickness 1.5mm
	Top steel tubes	Galvanized steel, thickness 1.2mm
	Bottom steel tubes	Galvanized steel, thickness 1.1mm
	Wall	double sided 0.30mm steel sheet with 50mm rock wool panels
	Roof	0.45mm steel cover, filled with 40mm glass wool
	Ceiling	0.23mm steel sheet
	Floor	18mm thickness cement sanding board
	Door (1pc)	Size: W925mm×H2035mm, Steel security door
	Window (2pcs)	Size:W920mm*H1200mm, sliding window
	Painting	Electrostatic spraying





PROJECT CASE ”



