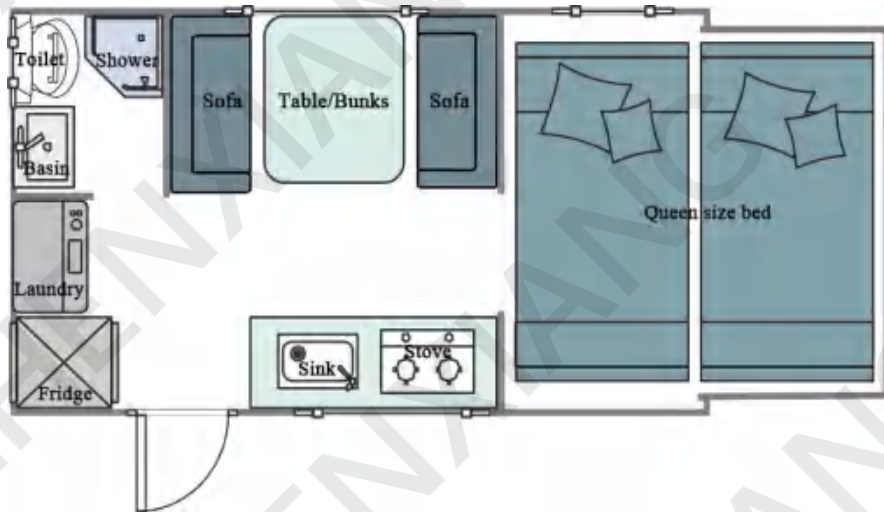


TRAVEL TRAILER BROCHURE

zhenxiang

Off road caravan
YD-13

TRAVEL TRAILER



Performance Parameters	
Model	YD-13
Exterior Dimension	L6015*W2230*H2720mm
Carriage Dimension	L4010*W2320*H1735mm
Wheel Base	3800mm
Wheel Track	1837mm
Minimum Ground Clearance	275mm
Approach Angle	21°
Curb Weight	2000kg
Max gross mass	2500kg
Max Speed	100km/h

Chassis	
Girder System	YD-13
Braking System	L6015*W2230*H2720mm
Suspension	L4010*W2320*H1735mm
Tyres	3800mm
Rim	1837mm
Retractor	275mm
Trailer Signal Sub	21°
Guide Pulley	2000kg
Carriage Body Leg	2500kg

Standard Features	
External	Energy
Cabin Form and Material	L6015*W2230*H2720mm
External Awning	L4010*W2320*H1735mm
Adjustable pedal	3800mm
Door	1837mm
Push-out Windows	275mm
External Lighting	21°
Signal Lighting	2000kg
Outdoor Bar	2500kg
Outdoor Storage Bins	2500kg

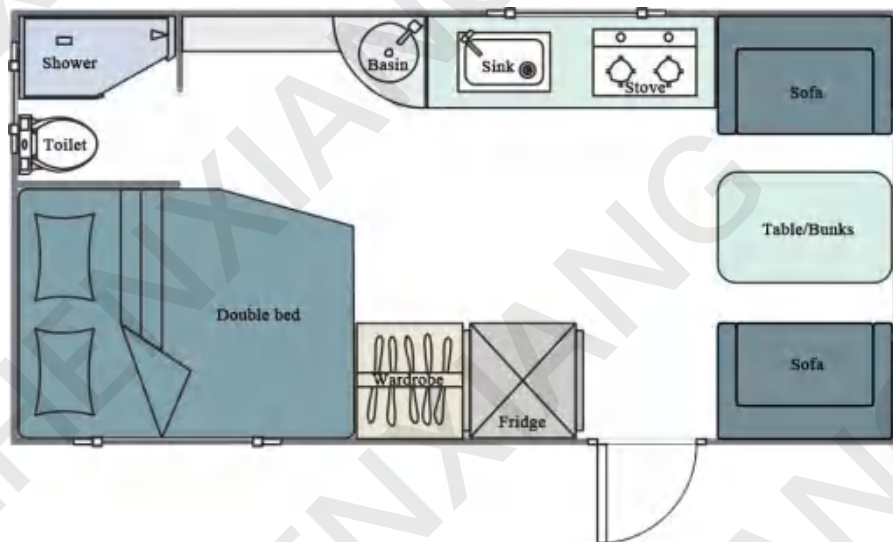
Interiors	Kitchen and Bathro
Manual Rear Slide-out	Internal Stoves
Queen Bed Size	Outdoor Kitchen
Bunk Bed Size	Basin
Adjustable pedal	Fridge
Pop-up Tent	1837mm
Pop-up Table	Toilet
Air Conditioner	Water Heater
Parking Heater	Independent Bathroom
Laundry	Outdoor Shower
LED Lighting	Rangehood

zhenxiang

Off road caravan

YD-15

TRAVEL TRAILER



zhenxiang

Off road caravan YD-15

Performance Parameters	
Exterior Dimension	L7130*W2400*H2860mm
Unloaded Weight	2000kg

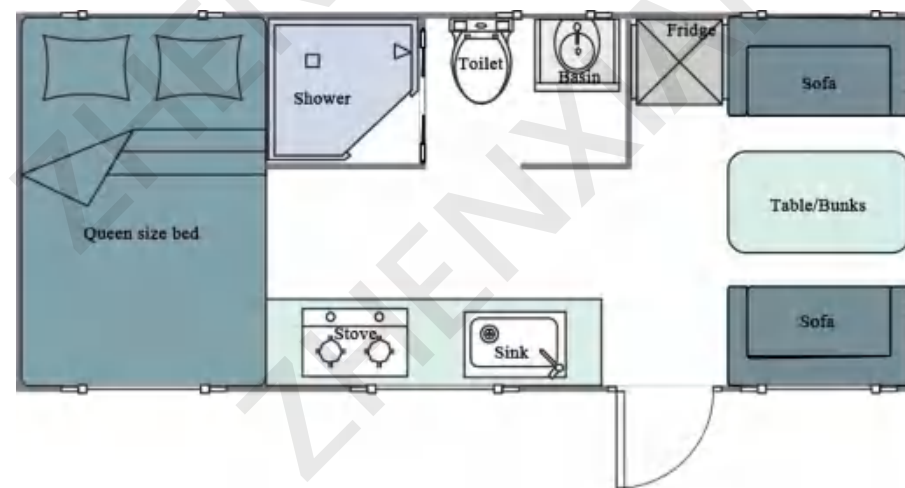
Chassis	
Suspension	Low alloy high strength steel welding type
Suspension	Independent Suspension
Rim	16", Aluminu Alloy

Energy Specification	
Battery	Lithium 400AH (600AH/800AH)
Integrated Inverter	3000W
Flexible Solar Panel	4*100W
Clean Water Tank	200L
Grey Water Tank	120L

Interiors	
Fridge	Thetford 140L
Entertainment system	JBL wireless outdoor speaker
Queen Bed Size	1900*1400
Bunk Bed Size	1100*2000
Air Conditioner	Dometic
Water Heater	Gas instant heat
Parking Heater	Trumah Gas 2400W
Laundry	Daewoo 2.5kg (optional)
Toilet	Combined bathroom, Thetford toilet

zhenxiang

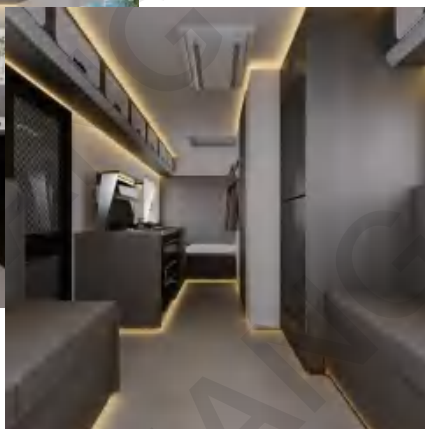
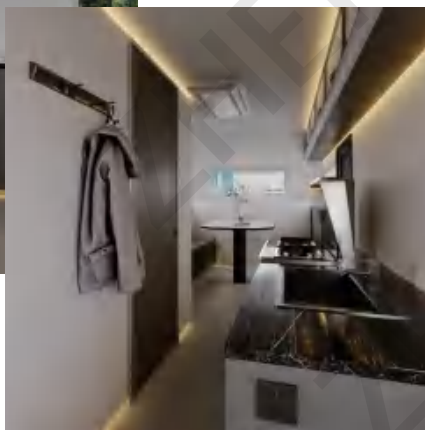
Off road caravan YD-17



zhenxiang

Off road caravan

YD-17



TRAVEL TRAILER

Performance Parameters

Exterior Dimension	L7420*W2345*H3050mm
Unloaded Weight	2500kg

Chassis

Girder System	Low alloy high strength steel welding type
Suspension	Independent Suspension
Rim	16", Aluminium Alloy

Energy Specification

Battery	Lithium 400AH (600AH/800AH)
Integrated Inverter	3000W
Flexible Solar Panel	6*100W
Clean Water Tank	200L
Grey Water Tank	200L

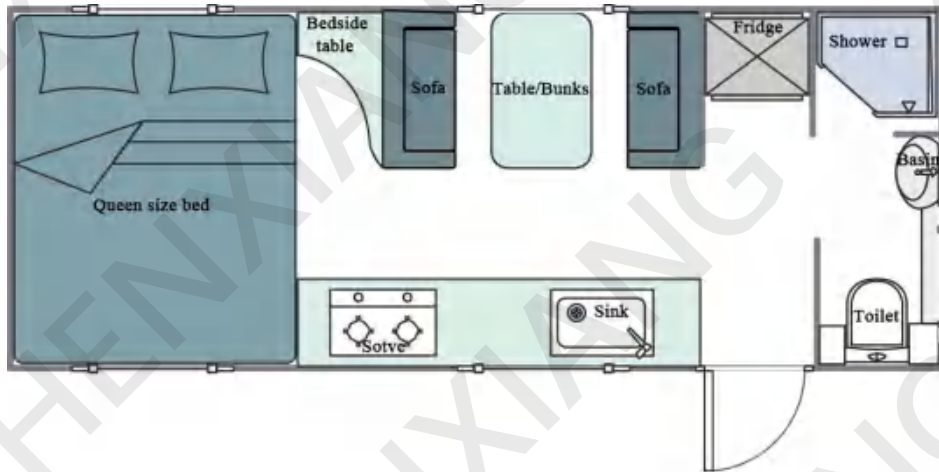
Interiors

Fridge	Thetford 170L
Entertainment system	JBL wireless outdoor speaker
Queen Bed Size	1950*1500
Bunk Bed Size	1100*2000
Air Conditioner	Dometic
Water Heater	Gas instant heat
Parking Heater	Trumah Gas 2400W
Laundry	Daewoo 2.5kg (optional)
Toilet	Combined bathroom, Thetford toilet

zhenxiang

Off road caravan
YD-19

TRAVEL TRAILER



zhenxiang

Off road caravan YD-19

Internal Toilet and Bathroom	
Pull Toilet	Wash Basin
Fiberglass Shower	Exhaust Fan
Toplight	Interior Atmosphere Lamp
Washing Machine	
Indoor Kitchen	
Three Energy Fridge	Combined Oven
Bowl Sink	Microwave
Rangehood	Toplight
Interior Atmosphere Lamp	
Living Room	
Overhead Air Conditioning	MatePad Pro 12.6
JBL XTREME3 JBL XTREME3 Music War Drum	Sofa
Lifting Table	Toplight
Interior Atmosphere Lamp	
Bedroom	
Cabinetry	Toplight
10cm Semi Latex Mattress	Interior Atmosphere Lamp
Double Bed	Bed Curtain
Skylight	
Outdoor Equipments	
4.5m Awning	Electronic Control System
Outdoor Stove	Solar Panel 600w
Outdoor Floodlight	3000W Integrated Charging and Inverter
V1500 Camping Lamp	Instant Water Heater
Outdoor Movable Table	Furnace
600AH12VBattery 600AH 12V	Spare Tire
240L General Water Tank	240L Grey Water Tank

zhenxiang

Off road camper trailer



zhenxiang

Off road camper trailer

Specification

Dimension	L5200×W2000×H1750mm
Empty Weight	1300kg

Chassis

Girder System	Low alloy high strength steel welding type
Suspension	Independent Suspension
Rim	16", Aluminu Alloy

Energy Specification

Battery	Lithium 400AH
Integrated Inverter	2000W
Clean Water Tank	100L

Interiors

Fridge	Portable
Entertainment system	JBL wireless outdoor speaker
Queen Bed Size	1800×2250
Water Heater	Gas instant heat
Toilet	Tent type combined bathroom, Portable thetford toilet

zhenxiang

Off road teardrop trailer



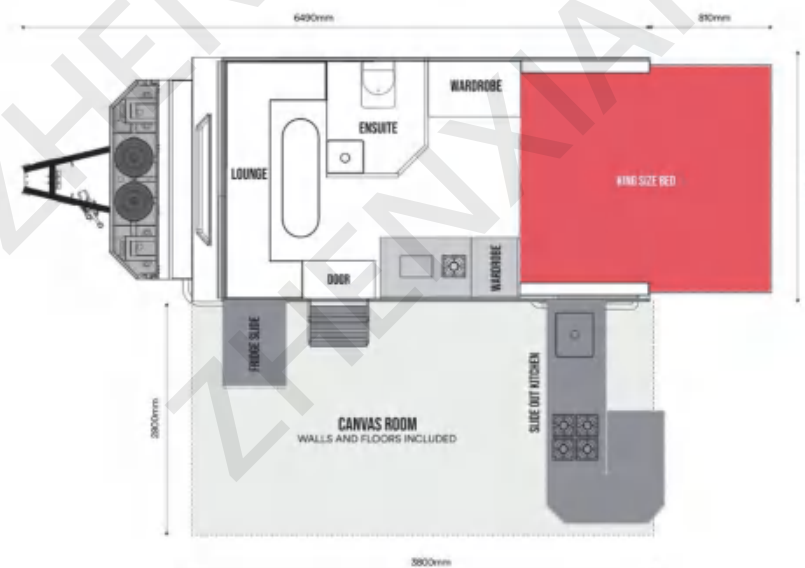
zhenxiang

Off road camper trailer

zhenxiang

YD-S15P

Size	
L4985mm*W2165mm*H2655mm	
Chassis	
Aluminum/steel galvanized	Independent suspension
10" electric brakes with handbrake	7 pin connector
Safety chain	Alloy wheels and tires 235/75×R14 with spare tire
Stabilizer leg 4x	
Interior	
U shape sofa bed	Small detachable table
Cabinets	Independent bathroom
Vinyl floor	Two burner gas stove with cover
Stainless steel sink with faucet	Refrigerator dual 120V/12V
Led lights	Windows and door double plates with screen shade
Roof fan or sun window manual open and close	Fire extinguisher
Camper integrated heater and water heater equipment/propane or diesel	
Exterior	
Slide in door step	Hook up for small table
Led light above door	Security lights on both sides of trailer
Outside shower connection	
Electrical system	
Heavy duty deep cycle battery/charger	Roof solar panel system (200W)
Control panel	Outdoor power supply system
Water tank and battery monitor	Battery disconnect switch
100L water tank with pump	2000W Inverter



zhenxiang

YD-S15P

TRAVEL TRAILER



Specifications	
Dimensions (closed)	6490mm (L) x 2200mm (W) x 2710mm (H)
Open Height	3110mm
Internal clearance	2050mm
Tow ball weight	240kg
Tare weight	2330kg
ATM	2900kg
GTM	2600kg

Key Features	
Dometic Rooftop Harrier Lite Air Conditioner	Reverse Camera
Truma Rapid Hot Water System	Independent Suspension
King Size Bed	Hot Dip Gal Drawbar
U shape Sofa Lounge (convertible to bed)	Compact & Light
Fully Functional Internal and External Kitchen with Hot/Cold Water tap	Low Maintenance
Projecta PM400 Battery Management System	Luxury Featured Packed
Projecta 2000W Pure Sine Wave Inverter	Complete inclusion Package
240V inlets/outlets, USB Outlets	Minimised Generation of Waste During Manufacturing Process
2*135AH Lithium Batteries	Efficient Appliances
400W Roof top Solar Panel	Low Profile = Less Drag = Less Emissions

zhenxiang

YD-S15E

TRAVEL TRAILER



zhenxiang

YD-S15E

Specifications	
Dimensions (closed)	6490mm (L) x 2200mm (W) x 2710mm (H)
Open Height	3110mm
Internal clearance	2050mm
Tow ball weight	240kg
Tare weight	2330kg
ATM	2900kg
GTM	2600kg

Key Features	
Dometic Rooftop Harrier Lite Air Conditioner	Reverse Camera
Truma Rapid Hot Water System	Independent Suspension
King Size Bed	Hot Dip Gal Drawbar
2 Standard Single Beds	Compact & Light
Fully Functional Internal and External Kitchen	Low Maintenance
Projecta PM400 Battery Management System	Featured Packed
Projecta 2000W Pure Sine Wave Inverter	Complete Package
240V inlets/outlets	Minimised Generation of Waste During Manufacturing Process
2*135AH Lithium Batteries	Efficient Appliances
400W Roof top Solar Panel	Low Profile = Less Drag = Less Emissions

zhenxiang

YD-S13X



zhenxiang

YD-S13X

TRAVEL TRAILER



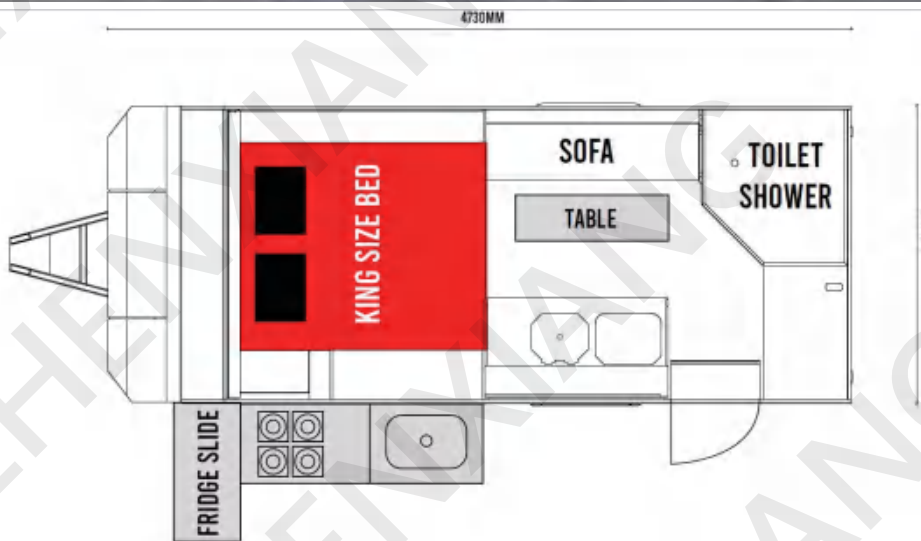
Specifications	
Dimensions (closed)	5660mm (L) x 2200mm (W) x 2480mm (H)
Open Height	2880mm
Internal clearance	2050mm
Tow ball weight	150kg
Tare weight	2220kg
ATM	2800kg
GTM	2500kg

Key Features	
Dometic Rooftop Harrier Lite Air Conditioner	Reverse Camera
Truma Rapid Hot Water System	Independent Suspension
King Size Bed	Hot Dip Gal Drawbar
Fully Functional Internal and External Kitchen	Compact & Light
Cruisemaster DO35 offroad Coupling	Low Maintenance
Projecta PM400 Battery Management System	Featured Packed
Projecta 2000W Pure Sine Wave Inverter	Complete Package
240V inlets/outlets	Minimised Generation of Waste During Manufacturing Process
2*135AH Lithium Batteries	Efficient Appliances
400W Roof top Solar Panel	Low Profile = Less Drag = Less Emissions

zhenxiang

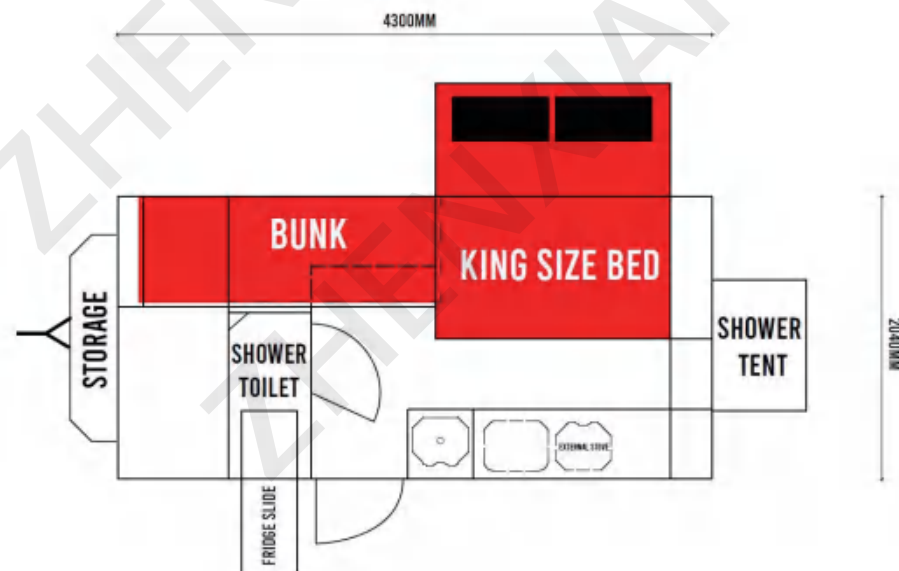
YD-J15

TRAVEL TRAILER



Specifications	
Dimensions (closed)	5950mm (L) x 2220mm (W) x 2480mm (H)
Open Height	2880mm open with air conditioner
Tow ball weight	220kg
Tare weight	2280kg
ATM	2800kg
GTM	2500kg

Key Features	
King size bed with ensuite	Caframo sirocco fans
Truma rapid hot water system	Fully Functional internal and external Kitchen
Dometic Harrier Lite air conditioner	Projecta IP2000W inverter
Projecta PM400 BMS	Reverse camera included
2 x 135AH lithium batteries	400w roof mounted solar panel
Pedders Independent suspension	4.5 electric waterproof awning
Annex with walls and floors	Ample storage
Low Maintenance	Featured Packed
Complete Package	Minimised Generation of Waste During Manufacturing Process
Efficient Appliances	Low Profile = Less Drag = Less Emissions





Specifications	
Dimensions (closed)	5600mm (L) x 2220mm (W) x 2480mm (H)
Open Height	2700mm
Tow ball weight	220kg
Tare weight	2280kg
ATM	2800kg
GTM	2500kg

Key Features	
Electric AUTO lid open and close	Independent Suspension
King Size Bed and bunk	Hot Dip Gal Drawbar
Truma hot water system	Heavy Duty
Fully Functional build in luxury kitchen	Low Maintenance
Dometic under bed air conditioner	Featured Packed
Projecta PM400 Battery Management System	Complete Package
Reverse camera included	Minimised Generation of Waste During Manufacturing Process
2 x 135AH lithium batteries	Efficient Appliances
400w roof mount solar panel	Low Profile = Less Drag = Less Emissions

zhenxiang

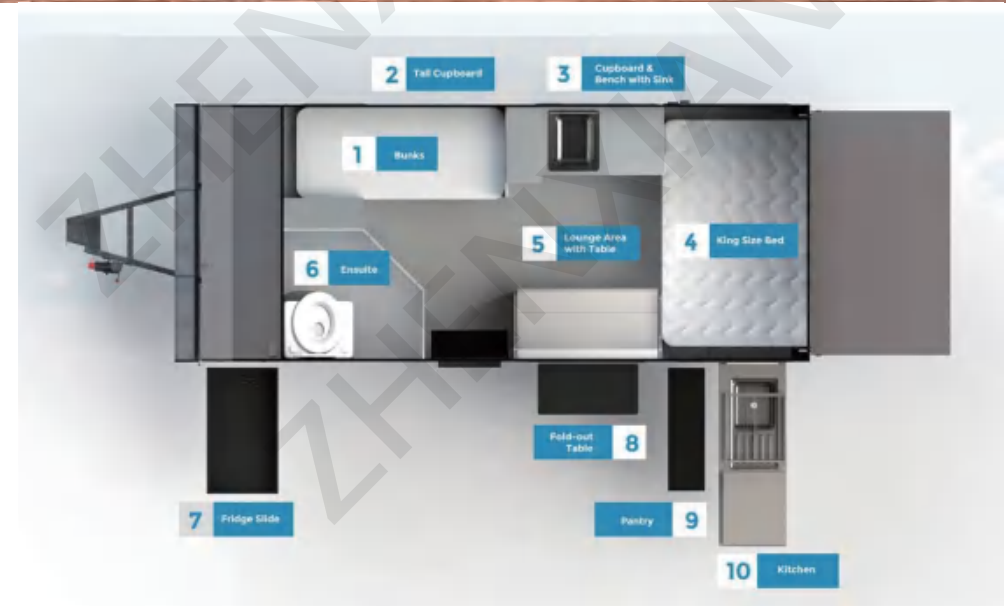
YD-P13

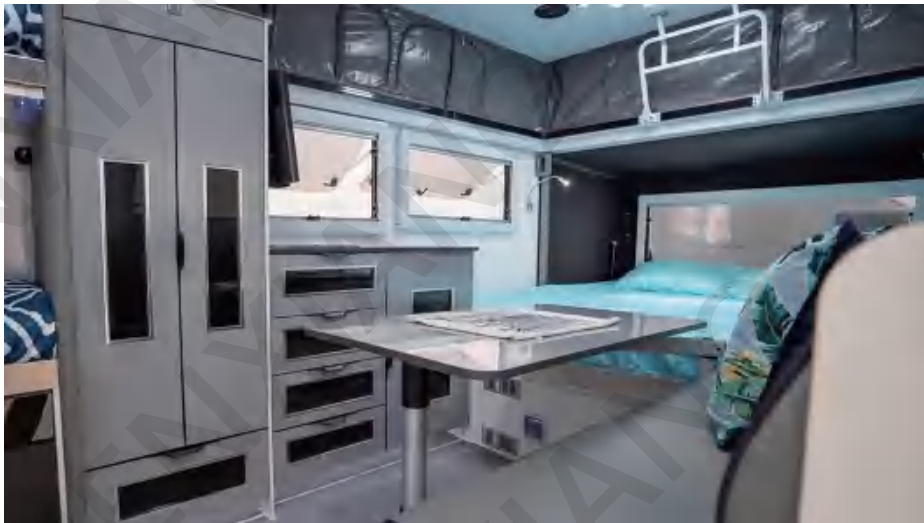
TRAVEL TRAILER



Specifications	
Length	6250mm
Height	2685mm (roof closed)
Width	2200mm
Tare	2180kg
Ball Weight (Tare)	160kg
Ball Weight (Max)	230kg
ATM	2700kg
Chassis	6" hot dip galvanised chassis
Construction	Aluminum Frame. Aluminum composite body with checker plate. One piece walls, floor & roof

Key Features	
A queen size bed with innerspring mattress	Hitchmaster DO35 coupling for extreme off-road articulation
Café dinette with optional bunk beds	Ironman Foam Cell shock absorbers
Plush leatherette interior seating	ARC XO Jockey Wheel
Fully functional slide-out kitchen with sink	Truma Aventa Air Con
Easily accessible pull-out fridge and pantry	Ranger RV Hatches
Thetford toilet and hot water system	Soft touch cabinetry
12V television with TV antenna	2x 100Ah Imperium Lithium Batteries
Stereo sound system with 2 internal & 2 external speakers	20A AC-DC battery charger
LED internal lighting	40A DC-DC battery charger
Pull-out aluminium step	5x 100W solar panels
Wind out awning	Internal cooking as upgrade option
Off-road tyres, including 2 spares	Lifetime Warranty on drawbar and Chassis
Fully galvanised chassis	





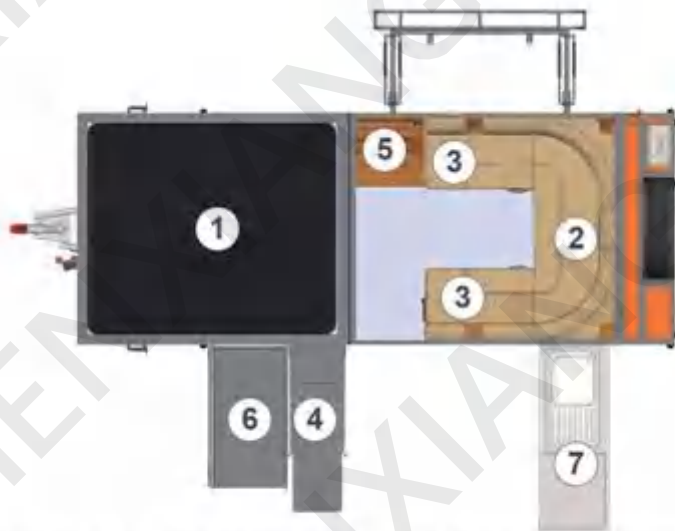
Specifications	
Length	6250mm
Height	2685mm (roof closed)
Width	2200mm
Tare	2470kg
Ball Weight (Tare)	225kg
Ball Weight (Max)	290kg
ATM	2900kg
Chassis	6" hot dip galvanised chassis
Construction	Aluminum composite body with checker plate. One piece walls, floor & roof

Key Features	
A queen size bed with innerspring mattress	Hitchmaster DO35 coupling for extreme off-road articulation
Café dinette with optional bunk beds	Ironman Foam Cell shock absorbers
Plush leatherette interior seating	ARC XO Jockey Wheel
Fully functional slide-out kitchen with sink	Truma Aventa Air Con
Easily accessible pull-out fridge and pantry	Ranger RV Hatches
Thetford toilet and hot water system	Soft touch cabinetry
12V television with TV antenna	2x 100Ah Imperium Lithium Batteries
Stereo sound system with 2 internal & 2 external speakers	20A AC-DC battery charger
LED internal lighting	40A DC-DC battery charger
Pull-out aluminium step	6x 100W solar panels
Wind out awning	Internal cooking as upgrade option
Off-road tyres, including 2 spares	Lifetime Warranty on drawbar and Chassis
Fully galvanised chassis	

zhenxiang

YD-TENT2

TRAVEL TRAILER



- 1. King bed
- 2. Seating area
- 3. Storage & bag stow
- 4. Pantry
- 5. Portable toilet
- 6. Fridge slide
- 7. Slide out kitchen

zhenxiang

YD-TENT2

Specifications	
Dimension (lid closed)	5695mm (L) x 2025mm (W) x 1730mm (H)(inc rack and spare)
Dimension (lid open)	5750mm (L) x 2605mm (W) x 3500mm (H)
Trailer Tare Weight	1450kg
Ball Weight (Tare)	155kg
Ball Weight (Max)	200kg
ATM	1990kg
Body Work	Baked enamel finish
Box Material	Main body aluminium frame & composite panel exterior with galvanized steel chassis & drawbar

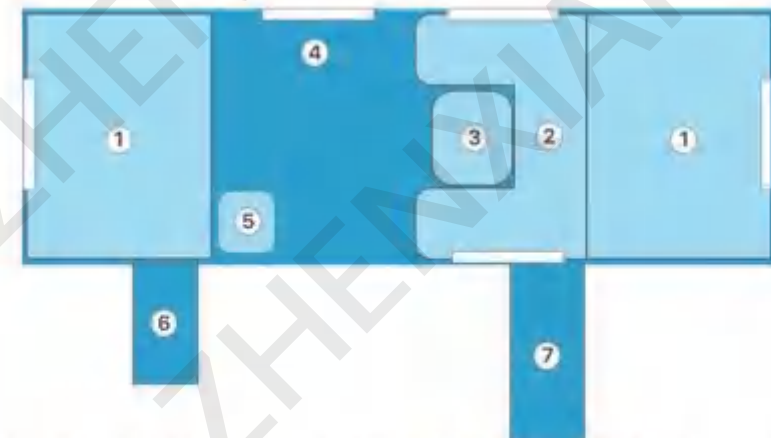
Key Features	
A luxurious king size bed	Durable suspension, with heavy duty coil springs and dual shock absorbers
Fully inflatable spacious annexe	Fully galvanised chassis
Plush leatherette interior seating	Off-road tyres
Fully functional slide-out kitchen with sink	Articulating DO35 hitch for extreme off-road articulation
Easily accessible pull-out fridge (optional) and pantry	Tare weighs 1450kg so is light to tow, can be towed by most standard SUVs or 4WDs
Internal portable toilet & external shower room annexe	Ground clearance better than some 4WDs.
Can sleep up to 8 people with inflated annexe	Exceptional storage capacity
Exterior light, late night cooking is now easy	1x 100Ah Imperium Lithium Battery with 240v Imperium Charger

zhenxiang

YD-TENT4



THE ULTIMATE FAMILY
CAMPER TRAILER



1. Fixed Double Beds
2. Seating Available
3. Table (movable)
4. Storage and bag stow
5. Portable Toilet
6. Fridge slide
7. Slide out kitchen



Specifications	
Dimension (lid closed)	5600mm (L) x 2155mm (W) x 1635mm (H)(inc rack and spare)
Dimension (lid open)	6580mm (L) x 2735mm (W) x 3460mm (H)
Trailer Tare Weight	1550kg
Ball Weight (Tare)	160kg
Ball Weight (Max)	220kg
ATM	1990kg
Body Work	Baked enamel finish
Box Material	Main body aluminium frame & composite panel exterior with galvanized steel chassis & drawbar

Key Features	
Two luxurious double beds (one convertible to king size)	1x 100Ah Imperium Lithium Battery with 240v Imperium Charger
Fully inflatable spacious annexe	Durable suspension, with heavy duty coil springs and dual shock absorbers
Plush leatherette interior seating	Fully galvanised chassis
Fully functional slide-out kitchen with sink	Off-road tyres
Easily accessible pull-out fridge (optional) and pantry	Articulating DO35 hitch for extreme off-road articulation
Internal portable toilet & external shower	Tare weight is 1550kg so is light to tow, can be towed by most standard SUVs or 4WDs
Can sleep up to 10 people with inflated annexe	Ground clearance better than some 4WDs.
Exterior light, late night cooking is now easy	Exceptional storage capacity

zhenxiang

OPLITE

TRAVEL TRAILER



Specifications	
Length	5240mm
Height	1670mm
Height (Closed)	1370mm
Height (Open)	3050mm
Tare	1130kg
Ball (Tare)	125kg
Ball (Max)	170kg
ATM	1600kg

Key Features	
Tent with Tropical Roof	DO35 Articulated Off-Road Coupling
Annexe, Floor & Draft Skirt	Independent Trailing Arm Suspension
Club Lounge with Portable Dining Table	15" Alloy Wheels
Queen Size Memory Foam Mattress	235/75R15 Mud Terrain Tyres
Under Seat Storage	Full Size Matching Spare Wheel
One Piece Hot Gal-Dipped Chassis	Fire Extinguisher
Aluminium Composite Sandwich Panels	Mesh Stone Guard
Aluminium Frame	Powered Fridge Slide
1 x 100Ah Imperium Lithium Battery	Slide-Out Pantry
LED Tail & Clearance lamps	Rear Tunnel Boot Storage
7 pin Flat Trailer plug & Anderson plug	Slide-Out Stainless Steel kitchen with sink, Cutlery Tray & 4 Burner Gas Stove with Plumbing & Gas Quick Connection
Plug & Play 240V Charger	2 x 4.5kg Gas Rings, Colour - Grey
DVD/USB/AUX/Bluetooth Stereo	2 x 20L Jerry Can Holders
2 x 6" speakers	1 x 70L Poly Water Tank
4 x internal/1 x external USB/12V	Electric Drum Brakes



zhenxiang

YD-Y13

TRAVEL TRAILER



Specifications	
Length	6200mm
Height	2630mm
Width	2300mm
Tare Mass	2240kg (Inc Air Conditioning)
Ball Weight	149kg
ATM	2990kg
Drawbar	150 x 50 x 4mm (Q345 steel)

Key Features	
2400W Roof Mounted Reverse Cycle Air Conditioning	Internal Cupboards & Storage
95L Dual Zone Portable Fridge/Freezer	Single Sofa & Table
Fridge Slide Cable Guide	Reading Lights
Enerdrive 40AMP DC2DC Smart Charger (Lithium Compatible)	LED Lights Throughout
Enerdrive A/C Smart Charger (Lithium Compatible)	External Pantry above kitchen
Enerdrive 2000W Inverter with A/C Charger	External Pantry Boxes in Fridge Slide
3x 100 AMP Deep Cycle Batteries	400Watt Roof Mounted Solar Panels
Dometic Dust Reduction System	4M Water Proof Awning
Full Lovells Suspension Upgrade	Full Size Water Resistant Canvas Annexe Inc. Walls & Vinyl Floor
Bluetooth, CD, DVD, USB Stereo System	Sail Track
24" TV Pack Inc. External & Internal Mounts	Anti-Flap Kit
Fully Certified Inline Gas Plumbing with 2nd Outlet	External Anderson Plug for Additional Solar Input 2x 120L Fresh Water Tanks
TRUMA 14L Gas / Electric Hot Water System	80L Grey Water Tank 2x 120L Fresh Water Tanks
Mains Water	External Storage / Generator box
External Shower System	Pole Box
External Kickass Shower Tent	Full Security Front Door
D035 Offroad Coupling	Dual Spare Wheels
Inner Spring King Mattress	Rock Sliders
Permanent Bunk Bed	Internal Ensuite

zhenxiang

YD-Y15

TRAVEL TRAILER



Specifications	
Length	6800mm
Height	2630mm
Width	2200mm
Tare Mass	2450kg
Ball Weight	160kg
ATM	2990kg
Drawbar	150 x 50 x 4mm

Key Features	
2400W Roof Mounted Reverse Cycle Air Conditioning	Internal Cupboards & Storage
MyCoolman 85L Dual Zone Portable Fridge/Freezer	Single Sofa & Table
Fridge Slide Cable Guide	Reading Lights
Enerdrive 40AMP DC2DC Smart Charger (Lithium Compatible)	LED Lights Throughout
Enerdrive A/C Smart Charger (Lithium Compatible)	External Pantry above kitchen
Enerdrive 2000W Inverter with A/C Charger	External Pantry Boxes in Fridge Slide
3x 100 AMP Deep Cycle Batteries	400Watt Roof Mounted Solar Panels
Dometic Dust Reduction System	4.5M Water Proof Awning
Full Lovells Suspension Upgrade	Full Size Water Resistant Canvas Annexe Inc. Walls & Vinyl Floor
Bluetooth, CD, DVD, USB Stereo System	Sail Track
24" TV Pack Inc. External & Internal Mounts	Anti-Flap Kit
Fully Certified Inline Gas Plumbing with 2nd Outlet	External Anderson Plug for Additional Solar Input 2x 120L Fresh Water Tanks
TRUMA 14L Gas / Electric Hot Water System	80L Grey Water Tank 2x 120L Fresh Water Tanks
Mains Water	External Storage / Generator box
External Shower System	Pole Box
External Kickass Shower Tent	Full Security Front Door
D035 Offroad Coupling	Dual Spare Wheels
Inner Spring King Mattress	Rock Sliders
2 x Permanent Bunk Beds	Internal Ensuite





Specifications	
Length	6300mm
Height	2550mm
Width	2170mm
Tare (approx)	2100kg
Ball Weight (approx)	220kg
ATM	3000kg

Key Features	
200AH Lithium Battery	16oz Fully Enclosed Annex With Walls & Vinyl Floor
20 amp Lithium Charger	Reversing Camera
Diesel Heater	External Pantry Shelving with Light
Dometic Roof Mounted Reverse Cycle Air Conditioning	Gas Struts on Rear Module
Projecta 1000W Inverter	Stainless Steel Locks on Rear Module and Tool Box
HD TV With Internal & External Mounts and Connections	Bike Rack Tow Bar
Certified Gas Plumbing	Storage Compartments Around Bed
Alloy Wheels With Mud Tyres	Ensuite Shower Curtain
McHitch 3.5T Drop on Coupling	Digital Diesel Heater Control Panel
500W Roof Mounted Solar Panels	Alloy Front Mounted Tool Box
Ark XO 500 Heavy Duty Jockey Wheel	Tap on Drawbar
Truma Ultra Rapid 14L Gas/Electric Hot Water System	(Optional Upgrade) Roll Out Awning

zhenxiang

YD-16DL

TRAVEL TRAILER



zhenxiang

YD-16DL

Specifications	
Length	7100mm
Height	2650mm
Width	2170mm
Tare (approx)	2400kg
Ball Weight (approx)	250kg
ATM	3000kg

Key Features	
200AH Lithium Battery	16oz Fully Enclosed Annex With Walls & Vinyl Floor
20 amp Lithium Charger	Rear View Camera
Diesel Heater	External Pantry Shelving with Light
Dometic Roof Mounted Reverse Cycle Air Conditioning	Gas Struts on Rear Module
Projecta 1000W Inverter	Stainless Steel Locks on Rear Module and Tool Box
HD TV With Internal & External Mounts and Connections	Bike Rack Tow Bar
Certified Gas Plumbing	Storage Compartments Around Main Bed
Alloy Wheels With Mud Tyres	Ensuite Shower Curtain
McHitch 3.5T Drop on Coupling	Digital Diesel Heater Control Panel
600W Roof Mounted Solar Panels	Alloy Front Mounted Tool Box
Ark XO 500 Heavy Duty Jockey Wheel	Tap on Drawbar
Truma Ultra Rapid 14L Gas/Electric Hot Water System	(Optional Upgrade) Roll Out Awning
Rear Pole Box	

zhenxiang

YD-16X



zhenxiang

YD-16X

TRAVEL TRAILER



Specifications	
Length	7100mm
Height	2550mm
Width	2170mm
Tare (approx)	2200kg
Ball Weight (approx)	250kg
ATM	2800kg

Key Features	
200AH Lithium Battery	16oz Fully Enclosed Annex With Walls & Vinyl Floor
20 amp Lithium Charger	Rear View Camera
Diesel Heater	Pantry Shelving with Light
Dometic Roof Mounted Reverse Cycle Air Conditioning	Gas Struts on Rear Module
Projecta 1000W Inverter	Stainless Steel Locks on Rear Module and Tool Box
HD TV With Internal & External Mounts and Connections	Bike Rack Tow Bar
Certified Gas Plumbing	Storage Compartments Around Main Bed
Alloy Wheels With Mud Tyres	Ensuite Shower Curtain
McHitch 3.5T Drop on Coupling	Digital Diesel Heater Control Panel
600W Roof Mounted Solar Panels	Alloy Front Mounted Tool Box
Ark XO 500 Heavy Duty Jockey Wheel	Tap on Drawbar
Truma Ultra Rapid 14L Gas/Electric Hot Water System	(Optional Upgrade) Roll Out Awning
Rear Pole Box	



Specifications	
Length	5420mm
Height	2550mm
Width	2125mm
Tare (approx)	1900kg
Ball Weight (approx)	110kg
ATM	2500kg

Key Features	
200AH Lithium Battery	Rear View Camera
20 amp Lithium Charger	Alloy Wheels With Mud Tyres
Diesel Heater	McHitch 3.5T Drop on Coupling
Dometic Roof Mounted Reverse Cycle Air Conditioning	200W Roof Mounted Solar Panels
Projecta 1000W Inverter	Ark XO 500 Heavy Duty Jockey Wheel
TV With Internal & External Mounts and Connections	Truma Ultra Rapid 14L Gas/Electric Hot Water System
Certified Gas Plumbing	16oz Fully Enclosed Annex With Walls & Vinyl Floor

zhenxiang

YD-16

TRAVEL TRAILER



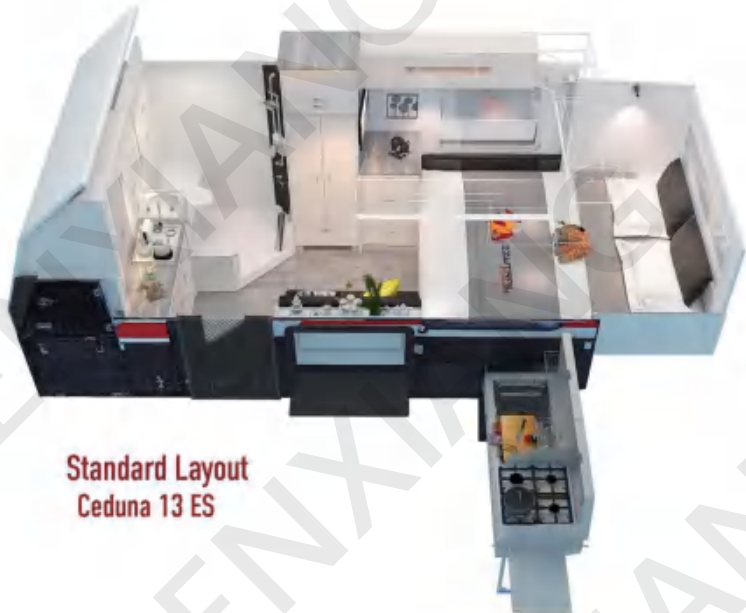
Specifications	
Length	7100mm
Height	2650mm
Width	2100mm
Tare (approx)	2280kg
Ball Weight (approx)	220kg
ATM	3000kg

Key Features	
200AH Lithium Battery	Rear View Camera
20 amp Lithium Charger	Alloy Wheels With Mud Tyres
Diesel Heater	McHitch 3.5T Drop on Coupling
Dometic Roof Mounted Reverse Cycle Air Conditioning	600W Roof Mounted Solar Panels
Projecta 1000W Inverter	Truma Ultra Rapid 14L Gas/Electric Hot Water System
HD TV With Internal & External Mounts and Connections	16oz Fully Enclosed Annex With Walls & Vinyl Floor
Certified Gas Plumbing	Ark XO 500 Heavy Duty Jockey Wheel
External Pantry Shelving with Light	Bike Rack Tow Bar
Rear Pole Box	Storage Compartments Around Bed
Gas Struts on Rear Module	Digital Diesel Heater Control Panel
Stainless Steel Locks on Rear Module and Tool Box	Alloy Front Mounted Tool Box
Tap on Drawbar	(Optional Upgrade) Roll Out Awning

zhenxiang

YD-A13

TRAVEL TRAILER



Standard Layout
Ceduna 13 ES



Specifications	
Exterior Length	6800mm
Exterior Width	2630mm
Collapsed Exterior Height with AC	2200mm
Tare	2450kg
Ball Weight	160kg
ATM	2990kg

Key Features	
Truma reverse cycle Air Conditioner	240V inlets & outlets
Victron energy Off Grid Charging Pack & Battery Management System	Draw bar tap
Bluetooth stereo system	External storage & generator box
HDTV with external antenna	Ezylite awning room fully enclosed
Certified gas plumbing to kitchen	Electric awning
Truma Gas/Elec Hot Water System	Anti flap kit for awning
3.5 Tonne ALKO Offroad Coupling	Aussie Traveller external door & fly screen
300W roof mounted solar panels	Fully enclosed front storage box
1 Piece fully moulded ensuite with basin	External stainless steel slide out kitchen
Storage cupboards in living area	External & internal pantry
Luxury king memory foam mattress	Ezy Rider Suspension
Double glazed windows	Pedders Shock Absorbers
LED strip lighting & reading lights	F5 Chassis with Lifetime Warranty
2 x 120L fresh water tanks	Insulated bed end for climate control & condensation
80L grey water tank	Double sealed bed hatch for dust reduction



Standard Layout
Parkes 13 ES

zhenxiang

YD-S13

TRAVEL TRAILER



Specifications	
Exterior Length	6170mm
Exterior Width	2200mm
Collapsed Exterior Height with AC	2640mm
Tare	2220kg
Ball Weight	150kg
ATM	2800kg

Key Features	
Truma reverse cycle Air Conditioner	Grey water monitoring gauge
80L grey water tank	Draw bar tap
Bluetooth stereo system	External storage & generator box
HDTV with external antenna	Aussie traveller external door & fly screen
Certified gas plumbing to kitchen	Fully enclosed front storage box
Truma Gas/Elec Hot Water System	External stainless steel slide out kitchen
3.5 Tonne ALKO Offroad Coupling	External & internal pantry
300W roof mounted solar panels	Ezy rider suspension
1 Piece fully moulded ensuite with basin	Pedders shock absorbers
Storage cupboards in living area	F5 Chassis with Lifetime Warranty
Luxury king memory foam mattress	Insulated bed end for climate control & condensation
Double glazed windows	Double sealed bed hatch for dust reduction
LED strip lighting & reading lights	2 x 120L fresh water tanks

zhenxiang

YD-TENT3

TRAVEL TRAILER



zhenxiang

YD-TENT3

Specifications	
Exterior Length	5720mm
Exterior Width	2020mm
Collapsed Exterior Height	1905mm
Tare	1700kg
Ball Weight	170kg
ATM	2250kg

Key Features	
Victron energy Off Grid Charging Pack & Battery Management System	External ensuite room
200W solar folding panels	Dish rack for kitchen
2 x 100ah deep cycle batteries	Alloy wheels
Bluetooth stereo system	Aluminium poles
HDTV	Rear water outlet
Fully certified gas plumbed to kitchen	Gusseted windows with midge & mosquito proof screens
Convertible lounge to additional kids bed	Gas Struts assisted lid for easy set up
Second gas bayonet	Gas Strut assisted boat loader
Fully enclosed annex with roof, walls, draft skirt, floor, ropes & pegs	2 x Poly water tanks
Canvas tropical roof for temp control and condensation	

zhenxiang

YD-TENT6



STIRLING LX MK3 3D FLOOR PLAN



Specifications	
Exterior Length	5720mm
Exterior Width	2020mm
Collapsed Exterior Height	1905mm
Tare	1780kg
Ball Weight	180kg
ATM	2250kg

Key Features	
Victron energy Off Grid Charging Pack & Battery Management System	External ensuite room
200W solar folding panels	Dish rack for kitchen
2 x 100ah deep cycle batteries	Alloy wheels
Bluetooth stereo system	Aluminium poles
HDTV	Rear water outlet
Fully certified gas plumbed to kitchen	Gusseted windows with midge & mosquito proof screens
Convertible lounge to additional kids bed	Gas Struts assisted lid for easy set up
Second gas bayonet	Gas Strut assisted boat loader
Fully enclosed annex with roof, walls, draft skirt, floor, ropes & pegs	2 x Poly water tanks
Canvas tropical roof for temp control and condensation	

zhenxiang

YD-TENT5

TRAVEL TRAILER



zhenxiang

YD-TENT5

Specifications	
Overall Exterior Length	4600mm
Overall Exterior Width	1820mm
Overall Exterior Height	1460mm
Tare	1040kg
Ball Weight	130kg
ATM	1600kg

Key Features	
1 x 100Ah deep cycle battery	Gas Struts assisted lid for easy set up
200W solar panels	Switch Box with Independently Fused Circuit Board
MyCoolman 36L fridge	Anderson plug with HD fridge power feed
100L poly under floor water tank	12V Cigi Socket
Fully enclosed annex	USB Port Internal
External ensuite room	Foot Well Courtesy Light
Dish rack	External Courtesy Light
Alloy wheels	3.5mm 12V Sockets
Drawbar tap	LED Kitchen Light
Gusseted windows with midge & mosquito proof screens	

tianjin yude

YD-TENT7



Specifications	
Exterior Length	6100mm
Exterior Width	2300mm
Exterior Height:	1700mm
Tare	2020kg
Ball Weight	180kg
ATM	2700kg

Key Features	
Victron energy Off Grid Charging Pack & Battery Management System	Second gas bayonet
200W solar folding panels	Fully enclosed annex with roof, walls, draft skirt, floor, ropes & pegs
2 x 100ah deep cycle batteries	Canvas tropical roof for temp control and condensation
Truma 14L Ultra Rapid built in Hot Water System	External ensuite room
Huge dining area	Dish Rack
Bluetooth stereo system	Alloy Wheels
HDTV	Aluminium poles
Fully certified gas plumbed to kitchen	Rear water outlet
Hot & Cold Water permanently plumbed to kitchen	Gusseted windows with midge & mosquito proof screens
King size master bed	Gas Struts assisted lid for easy set up
Double rear fold out bed	Gas Strut assisted boat loader
Convertible lounge to additional double bed	2 x Poly water tanks



Specifications	
Exterior Length	4100mm
Exterior Width (arch to arch)	1940mm
Exterior Height:	2170mm (includes packed tent height 350mm)
Tare	1025kg
Ball Weight	115kg
ATM	1500kg

Key Features	
100Ah deep cycle battery	Lighting system
12V power connections and distribution	12V Water pump
Double USB outlet	Slide out premium stainless-steel kitchen with cold water tap, Cutlery & Utility Draws, prep space
5.5mm 12V DC jack socket	2 burner glass lid cooktop & sink
12V ciggi socket	Shower outlet: Water tap at the rear for cold water supply
50A anderson plug	23 Zero Dakota 1400 roof top tent kit
Water tank level gauge with backlight	23 Zero Raven 2000 awning kit
Switch box with independently fused circuit board	

zhenxiang

YD-S15Q



zhenxiang

YD-S18

Specifications	
Exterior Length	6490mm
Exterior Width	2220mm
Collapsed Exterior Height	2460mm
Tare	2330kg
Ball Weight	180kg
ATM	2900kg

Key Features	
12V and 240V Power throughout	Powered TV Antenna
3x 100Ah Deep Cycle Batteries	Air Conditioner: Optional
Volt Meter & 50 Amp Circuit Breaker	Main bed: King
Water Tank Level Gauges with LED Backlight	Internal Lounge and Collapsible/Foldable Dining Table
Truma 240V/Gas 14L Water Heater	Leatherette Seating
240V Power/Generator Input	Integrated 4 Speaker Entertainment System
12V Ciggi Socket	TV System: 24 inch HDTV
Dual USB Port Internal	Commercial Grade Timber Vinyl Interior Flooring
Internal LED Lighting System	4m Cassette Awning
LED Kitchen Lighting	

Specifications	
Exterior Length	7020mm
Exterior Width	2220mm
Collapsed Exterior Height	2640mm
Tare	2785kg
Ball Weight	260kg
ATM	3500kg

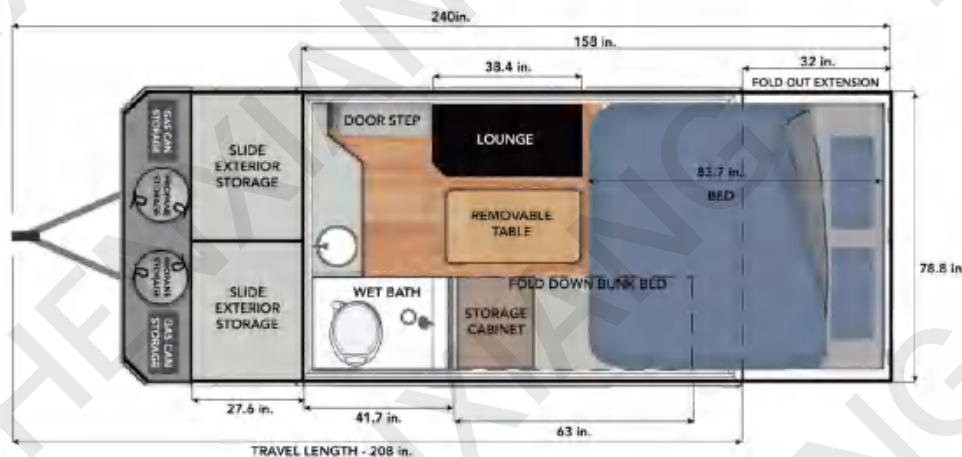
Key Features	
12V and 240V Power throughout	Air Conditioner: Optional
3x 100Ah Deep Cycle Batteries	Main bed: King
Water Tank Level Gauges with LED Backlight	Premium Triple Density Foam Mattress
Switch Box with Independently Fused Circuit Board	Integrated 4 Speaker Entertainment System
Truma 240V/Gas 14L Water Heater	24 inch HDTV
12V Ciggi Socket	Ensuite with Premium Shower, Sink & Cassette toilet
Dual USB Port Internal	Permanently Plumbed Water Marked Certified Hot/Cold Water
LED Lighting System	5.0m Manual Cassette Awning
Reversible Fan Forced Ensuite Vent	

zhenxiang

YD-12

TRAVEL TRAILER

SLEEPS 3



Size	
Lifting	+0.5m
Exterior height of the vehicle	3m (roof opening)/2.5m (roof closing)
Interior height of the vehicle	1.9m (roof opening)/1.5m (roof closing)
External body length	5m
Internal body length	3.7m
Outer body width	2.4m
Net weight	1500KG
Front end weight	200KG
Total weight	2000KG

Exterior decoration	
Material	Aluminum plastic board+aluminum flower board
Thermal insulation	R16 foam insulation board is used for the roof and body
Roof	Whole aluminum panel
Design	Simple and easy to operate lifting structure with extended bed structure
Elevated roof	Made of specialized canvas with mesh windows
Windows	3 European style windows with mosquito screen and privacy shading curtains
Sunshade	Manual sunshade with 2 brackets
Toolbox	Large pull-out storage space with 12V plug, front slate with 2 gas tank brackets and 2 oil barrel brackets
Outdoor kitchen	Stainless steel water basin, gas stove, and large preparation table
Shower	Outdoor shower equipped with a privacy tent that can be connected

Interior	
Bathroom	Integrated fiberglass bathroom with exhaust fan and toilet
Lounge	Equipped with dining table and premium leather sofa
Table	A portable table that can be lifted or lowered
Sleep structure	can sleep for 3 people 1x double bed 1x foldable upper bunk supported by gas springs
Floor	Wood grain floor leather
Cabinet	Malaysian lightweight wood with modern 5-star wood grain finish, all cabinets are supported by gas springs and come with push open travel safety locks and drawers
Artificial leather	khaki high-quality artificial leather
Entrance door	With multiple safety locks and a separate built-in screen door

Power	
Power system	The 12v/220V power system is equipped with customized black series labels 1000W inverter and control panel
Battery	2x100AH deep cycle battery
Solar panel	High efficiency single crystal flexible solar panel installed on the roof, up to 200W
Indoor lighting	The bedroom and living room are equipped with LED reading lights
Outdoor lighting	Install width/position lights and front/rear LED headlights on both sides of the vehicle body
Socket	Internal/external 12V/USB socket
Mains	30A socket
Control panel	circuit breakers, digital instruments, and power readings

Chassis	
Traction frame/chassis	made of hot-dip galvanized steel pipe, with key parts welded with reinforcing plates
Independent suspension	Each independent cantilever is equipped with dual shock absorbers and coil springs
Tires	265x75x R16 off-road all terrain tires, standard with one spare tire
Wheel hub	16 inch iron wheel hub with black coating
Brake	12 inch electric brake+handbrake; The braking system includes 2 safety chains
Tractor	Australian ADR certified off-road tractor with BLACK SERIES logo
Signal light connector	7-core plug
Anderson plug	50 A
Guide wheel	A swinging heavy-duty 10 "guide wheel for off-road use
Trailer ring	2 trailer rings at the rear of the vehicle body

Pipeline	
Bathroom	Outdoor bathroom tent and indoor integrated fiberglass bathroom
Water basin	Indoor large bowl shaped water basin and outdoor stainless steel water basin
Toilet	Ceramic toilet

Water tank	
Clean water tank	100L, with aluminum flower board protection water tank
Grey water tank	60L, with aluminum flower board protection water tank
Black water tank	100L, with aluminum flower board protection water tank

Electrical appliances/accessories	
Refrigerator	Portable refrigerator for outdoor use
Stove	Outdoor gas stove
Gas	2x20L gas tank
Heating fan	16000BTU thermostat control
Air conditioning	Dormeda overhead air conditioning
Safety configuration	Fire extinguisher, smoke alarm, and gas/carbon oxide alarm
Entertainment system	CD/FM/IPOD/Bluetooth/USB function radio
	Indoor 2x speakers
	2x marine level horn outside the vehicle
	24 "TV with DVD function
Antenna	High-definition TV antenna with built-in safety lock

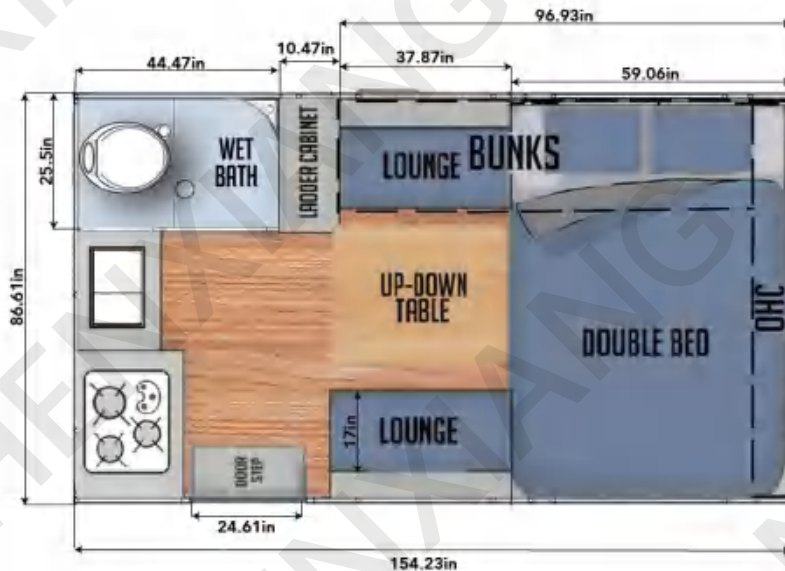


zhenxiang

YD-12Q

TRAVEL TRAILER

SLEEPS 4



Size	
Lifting	+0.5m
Exterior height of the vehicle	3m (roof opening)/2.5m (roof closing)
Interior height of the vehicle	2m (lifting to open)/1.5m (lifting to close)
External body length	6m
Internal body length	3.7m
Outer body width	2.4m
Net weight	2120KG
Front end weight	200KG
Total weight	2800KG

Exterior decoration	
Material	Aluminum plastic board+aluminum flower board
Thermal insulation	R16 foam insulation board is used for the roof and body
Roof	Whole aluminum panel
Design	Simple and easy to operate lifting structure with extended bed structure
Elevated roof	Made of specialized canvas with mesh windows
Windows	3 European style windows with mosquito screen and privacy shading curtains
Sunshade	Manual sunshade with 2 brackets
Toolbox	Large storage space, front toolbox with 2 gas tank supports Rack and 2 oil drum brackets
Bar counter	Lockable folding bar counter
Kitchen	stainless steel water basin, gas stove, and large preparation table

Interior	
Bathroom	One piece fiberglass bathroom with exhaust fan and toilet
Lounge	Equipped with dining table and high-end leather sofa, which can be converted into a bed
Kitchen	equipped with a stove, water basin, microwave, and refrigerator
Sleep structure	1x double bed, 1x foldable upper bunk supported by gas springs, and 1x sofa bed
Floor	Wood grain floor leather
Cabinet	Malaysian lightweight wood with modern 5-star wood grain finish. All cabinets use Gas spring support with push open travel safety lock and drawer
Artificial leather	khaki high-quality artificial leather
Entrance door	With multiple safety locks and a separate built-in screen door

Power	
Power system	The 12v/220V power system is equipped with customized black series labels 2000W inverter and control panel
Battery	4x100AH deep cycle battery
Solar panel	High efficiency single crystal flexible solar panel installed on the roof, up to 400W
Indoor lighting	The bedroom and living room are equipped with LED reading lights
Outdoor lighting	Install width/position lights and front/rear LED headlights on both sides of the vehicle body
Socket	Internal/external 12V/USB socket
Mains	30A socket
Control panel	circuit breakers, digital instruments, and power readings
Chassis	
Traction frame/chassis	made of hot-dip galvanized steel pipe, with key parts welded with reinforcing plates
Independent suspension	Each independent cantilever is equipped with dual shock absorbers and coil springs
Tires	265x75x R16 off-road all terrain tires, standard with one spare tire
Wheel hub	16 inch iron wheel hub with black coating
Brake	12 inch electric brake+handbrake; The braking system includes 2 safety chains
Tractor	Australian ADR certified off-road tractor with BLACK SERIES logo
Signal light connector	7-core plug
Anderson plug	50 A
Guide wheel	A swinging heavy-duty 10 "guide wheel for off-road use
Trailer ring	2 trailer rings at the rear of the vehicle body
Pipeline	
Bathroom	Outdoor bathroom tent and indoor integrated fiberglass bathroom
Water basin	Indoor large bowl shaped water basin and outdoor stainless steel water basin
Toilet	Ceramic toilet
Water tank	
Drinking water tank	60L, triple filtration system
Clean water tank	190L, with aluminum flower board protection water tank
Grey water tank	250L, with aluminum flower board protection water tank
Black water tank	100L, with aluminum flower board protection water tank

Electrical appliances/accessories	
Refrigerator	2.6 cubic feet refrigerator
Stove	Outdoor and indoor gas stoves
Gas	2x20L gas tank
Heating fan	16000BTU thermostat control
Air conditioning	Dormeda overhead air conditioning
Safety configuration	Fire extinguisher, smoke alarm, and gas/carbon oxide alarm
Entertainment system	CD/FM/IPOD/Bluetooth/USB function radio
	Indoor 2x speakers
	2x marine level horn outside the vehicle
Antenna	24 "TV with DVD function
Microwave oven	High-definition TV antenna with built-in safety lock
	x1

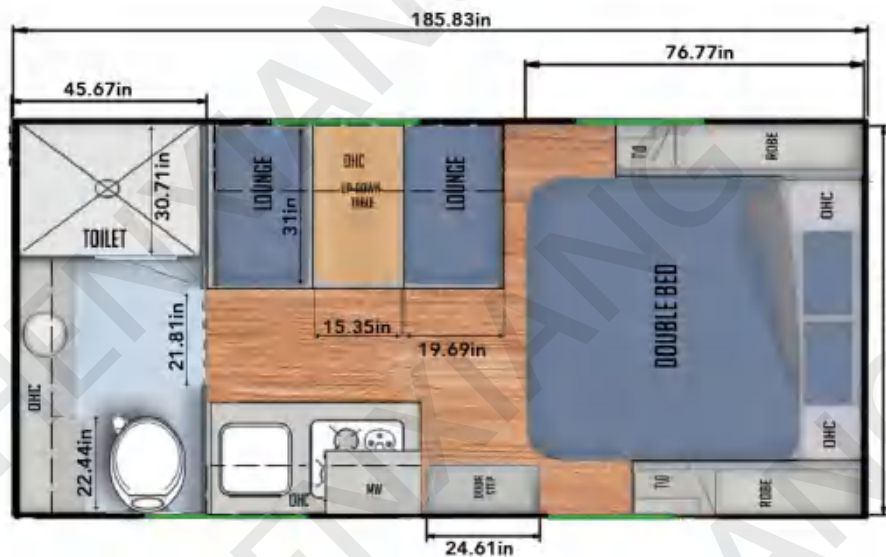


zhenxiang

YD-15Q

TRAVEL TRAILER

SLEEPS 3



Size	
Internal height	1.9m
Internal length of vehicle body	4.6m
External body length	6.8m
Outer body width	2.24m
External body height	2.95m
Net weight	2400KG
Front end weight	340KG
Total weight	2800KG
Exterior decoration	
Material	Aluminum plastic board+aluminum flower board
Stone blocking/bumper	protecting the bottom of the RV
Thermal insulation	R16 foam insulation board is used for the roof and body
Roof	Whole aluminum panel
Shower	Outdoor cold/hot water shower
Elevated roof	made of specialized canvas with mesh windows for outdoor use
Windows	3 European style windows with mosquito screen and privacy shading curtains
Sunshade	Manual sunshade with 2 brackets
Toolbox	Large storage space, front toolbox with 2 gas tank supports Rack and 2 oil drum brackets
Bar counter	Lockable folding bar counter
Kitchen	stainless steel water basin, gas stove, and large preparation table
Interior	
Bathroom	Wet and dry separation bathroom
Lounge	Equipped with dining table and high-end leather sofa, which can be converted into a bed
Kitchen	equipped with a stove, water basin, microwave, and refrigerator
Sleep structure	1x double bed, 1x sofa bed
Floor	Wood grain floor leather
Cabinet	Malaysian lightweight wood with modern 5-star wood grain finish. All cabinets use Gas spring support with push open travel safety lock and drawer
Artificial leather	khaki high-quality artificial leather
Entrance door	With multiple safety locks and a separate built-in screen door

Power	
Power system	The 12v/220V power system is equipped with customized black series labels 2000W inverter and control panel
Battery	4x100AH deep cycle battery
Solar panel	High efficiency single crystal flexible solar panel installed on the roof, up to 400W
Indoor lighting	The bedroom and living room are equipped with LED reading lights
Outdoor lighting	Install width/position lights and front/rear LED headlights on both sides of the vehicle body
Socket	Internal/external 12V/USB socket
Mains	30A socket
Control panel	circuit breakers, digital instruments, and power readings
Chassis	
Traction frame/chassis	made of hot-dip galvanized steel pipe, with key parts welded with reinforcing plates
Independent suspension	Each independent cantilever is equipped with dual shock absorbers and coil springs
Tires	265x75x R16 off-road all terrain tires, standard with one spare tire
Wheel hub	16 inch iron wheel hub with black coating
Brake	12 inch electric brake+handbrake; The braking system includes 2 safety chains
Tractor	Australian ADR certified off-road tractor with BLACK SERIES logo
Signal light connector	7-core plug
Anderson plug	50 A
Guide wheel	A swinging heavy-duty 10 "guide wheel for off-road use
Trailer ring	2 trailer rings at the rear of the vehicle body
Pipeline	
Bathroom	Outdoor bathroom tent and indoor integrated fiberglass bathroom
Water basin	Indoor large bowl shaped water basin and outdoor stainless steel water basin
Toilet	Ceramic toilet
Water tank	
Drinking water tank	60L, triple filtration system
Clean water tank	240L, with aluminum flower board protection water tank
Grey water tank	100L, with aluminum flower board protection water tank
Black water tank	100L, with aluminum flower board protection water tank

Electrical appliances/accessories	
Refrigerator	2.6 cubic feet refrigerator
Stove	Outdoor and indoor gas stoves
Gas	2x20L gas tank
Heating fan	16000BTU thermostat control
Air conditioning	Dormeda overhead air conditioning
Safety configuration	Fire extinguisher, smoke alarm, and gas/carbon oxide alarm
Entertainment system	CD/FM/IPOD/Bluetooth/USB function radio
	Indoor 2x speakers
	2x marine level horn outside the vehicle
	24 "TV with DVD function
Antenna	High-definition TV antenna with built-in safety lock
Microwave oven	x1



zhenxiang

YD-17Q

TRAVEL TRAILER

SLEEPS 3



Size	
Internal height	1.9m
Internal length of vehicle body	5.2m
External body length	7.2m
Outer body width	2.3m
External body height	3.1m
Net weight	2620KG
Front end weight	240KG
Total weight	3500KG
Exterior decoration	
Material	Aluminum plastic board+aluminum flower board
Stone blocking/bumper	protecting the bottom of the RV
Thermal insulation	R16 foam insulation board is used for the roof and body
Roof	Whole aluminum panel
Shower	Outdoor cold/hot water shower
Sunshade	Manual sunshade with 2 brackets
Windows	3 European style windows with mosquito screen and privacy shading curtains
Sunshade	Manual sunshade with 2 brackets
Toolbox	Large storage space, front toolbox with 2 gas tank supports Rack and 2 oil drum brackets
Bar counter	Lockable folding bar counter
Kitchen	stainless steel water basin, gas stove, and large preparation table
Interior	
Bathroom	One piece fiberglass bathroom with exhaust fan and toilet
Lounge	Equipped with dining table and high-end leather sofa, which can be converted into a bed
Kitchen	equipped with a stove, water basin, microwave, and refrigerator
Sleep structure	1x double bed, 1x sofa bed, and 2x upper and lower bunks
Floor	Wood grain floor leather
Cabinet	Malaysian lightweight wood with modern 5-star wood grain finish. All cabinets use Gas spring support with push open travel safety lock and drawer
Artificial leather	khaki high-quality artificial leather
Entrance door	With multiple safety locks and a separate built-in screen door

Power	
Power system	The 12v/220V power system is equipped with customized black series labels 2000W inverter and control panel
Battery	4x100AH deep cycle battery
Solar panel	High efficiency single crystal flexible solar panel installed on the roof, up to 400W
Indoor lighting	The bedroom and living room are equipped with LED reading lights
Outdoor lighting	Install width/position lights and front/rear LED headlights on both sides of the vehicle body
Socket	Internal/external 12V/USB socket
Mains	30A socket
Control panel	circuit breakers, digital instruments, and power readings
Chassis	
Traction frame/chassis	made of hot-dip galvanized steel pipe, with key parts welded with reinforcing plates
Independent suspension	Each independent cantilever is equipped with dual shock absorbers and coil springs
Tires	265x75x R16 off-road all terrain tires, standard with one spare tire
Wheel hub	16 inch iron wheel hub with black coating
Brake	12 inch electric brake+handbrake; The braking system includes 2 safety chains
Tractor	Australian ADR certified off-road tractor with BLACK SERIES logo
Signal light connector	7-core plug
Anderson plug	50 A
Guide wheel	A swinging heavy-duty 10 "guide wheel for off-road use
Trailer ring	2 trailer rings at the rear of the vehicle body
Pipeline	
Bathroom	Outdoor bathroom tent and indoor integrated fiberglass bathroom
Water basin	Indoor large bowl shaped water basin and outdoor stainless steel water basin
Toilet	Ceramic toilet
Water tank	
Drinking water tank	60L, triple filtration system
Clean water tank	240L, with aluminum flower board protection water tank
Grey water tank	100L, with aluminum flower board protection water tank
Black water tank	100L, with aluminum flower board protection water tank

Electrical appliances/accessories	
Refrigerator	6 cubic feet refrigerator
Stove	Outdoor and indoor gas stoves
Gas	2x20L gas tank
Heating fan	16000BTU thermostat control
Air conditioning	Dormeda overhead air conditioning
Safety configuration	Fire extinguisher, smoke alarm, and gas/carbon oxide alarm
Entertainment system	CD/FM/IPOD/Bluetooth/USB function radio
	Indoor 2x speakers
	2x marine level horn outside the vehicle
	24 "TV with DVD function
Antenna	High-definition TV antenna with built-in safety lock
Microwave oven	x1
Range hood	Light and thin dual fan lamped range hood



zhenxiang

YD-19Q

TRAVEL TRAILER

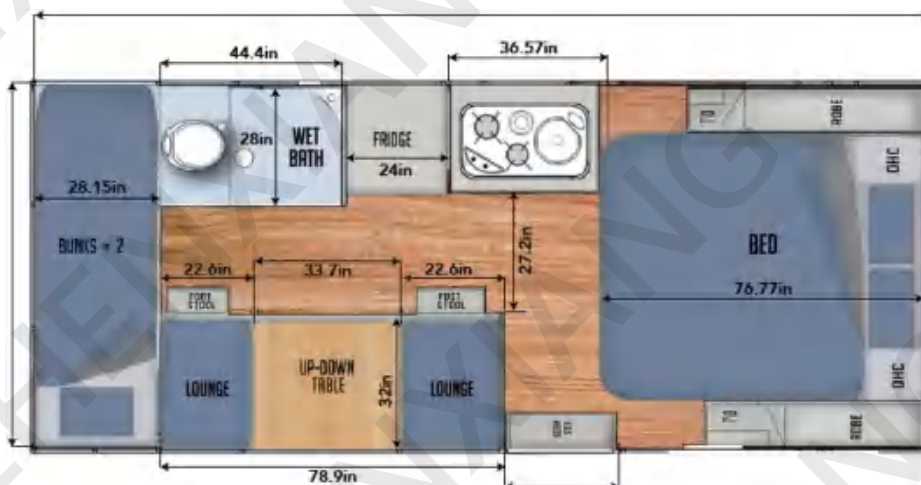
SLEEPS 3



Size	
Internal height	1.9m
Internal length of vehicle body	5.8m
External body length	8m
Outer body width	2.3m
External body height	3.1m
Net weight	2880KG
Front end weight	290KG
Total weight	3500KG

Exterior decoration	
Material	Aluminum plastic board+aluminum flower board
Stone blocking/bumper	protecting the bottom of the RV
Thermal insulation	R16 foam insulation board is used for the roof and body
Roof	Whole aluminum panel+roof ventilation window
Elevated roof	made of specialized canvas with mesh windows for outdoor use
Shower	Outdoor shower
Windows	3 European style windows with mosquito screen and privacy shading curtains
Sunshade	Manual sunshade with 2 brackets
Toolbox	Large storage space, front toolbox with 2 gas tank supports Rack and 2 oil drum brackets
Bar counter	Lockable folding bar counter
Kitchen	stainless steel water basin, gas stove, and large preparation table

Interior	
Bathroom	One piece fiberglass bathroom with exhaust fan and toilet
Lounge	Equipped with dining table and high-end leather sofa, which can be converted into a bed
Kitchen	equipped with a stove, water basin, microwave, and refrigerator
Sleep structure	1x double bed, 1x foldable upper bunk supported by gas springs, and 1x sofa bed
Floor	Wood grain floor leather
Cabinet	Malaysian lightweight wood with modern 5-star wood grain finish. All cabinets use Gas spring support with push open travel safety lock and drawer
Artificial leather	khaki high-quality artificial leather
Entrance door	With multiple safety locks and a separate built-in screen door



Power	
Power system	The 12v/220V power system is equipped with customized black series labels 2000W inverter and control panel
Battery	4x100AH deep cycle battery
Solar panel	High efficiency single crystal flexible solar panel installed on the roof, up to 400W
Indoor lighting	The bedroom and living room are equipped with LED reading lights
Outdoor lighting	Install width/position lights and front/rear LED headlights on both sides of the vehicle body
Socket	Internal/external 12V/USB socket
Mains	30A socket
Control panel	circuit breakers, digital instruments, and power readings
Chassis	
Traction frame/chassis	made of hot-dip galvanized steel pipe, with key parts welded with reinforcing plates
Independent suspension	Each independent cantilever is equipped with dual shock absorbers and coil springs
Tires	265x75x R16 off-road all terrain tires, standard with one spare tire
Wheel hub	16 inch iron wheel hub with black coating
Brake	12 inch electric brake+handbrake; The braking system includes 2 safety chains
Tractor	Australian ADR certified off-road tractor with BLACK SERIES logo
Signal light connector	7-core plug
Anderson plug	50 A
Guide wheel	A swinging heavy-duty 10 "guide wheel for off-road use
Trailer ring	2 trailer rings at the rear of the vehicle body
Pipeline	
Bathroom	Outdoor bathroom tent and indoor integrated fiberglass bathroom
Water basin	Indoor large bowl shaped water basin and outdoor stainless steel water basin
Toilet	Ceramic toilet
Water tank	
Drinking water tank	60L, triple filtration system
Clean water tank	240L, with aluminum flower board protection water tank
Grey water tank	100L, with aluminum flower board protection water tank
Black water tank	100L, with aluminum flower board protection water tank

Electrical appliances/accessories	
Refrigerator	6 cubic feet refrigerator
Stove	Outdoor and indoor gas stoves
Gas	2x20L gas tank
Heating fan	16000BTU thermostat control
Air conditioning	Dormeda overhead air conditioning
Safety configuration	Fire extinguisher, smoke alarm, and gas/carbon oxide alarm
Entertainment system	CD/FM/IPOD/Bluetooth/USB function radio
	Indoor 2x speakers
	2x marine level horn outside the vehicle
Antenna	24 "TV with DVD function
Microwave oven	High-definition TV antenna with built-in safety lock
Range hood	x1
	Light and thin dual fan lamped range hood

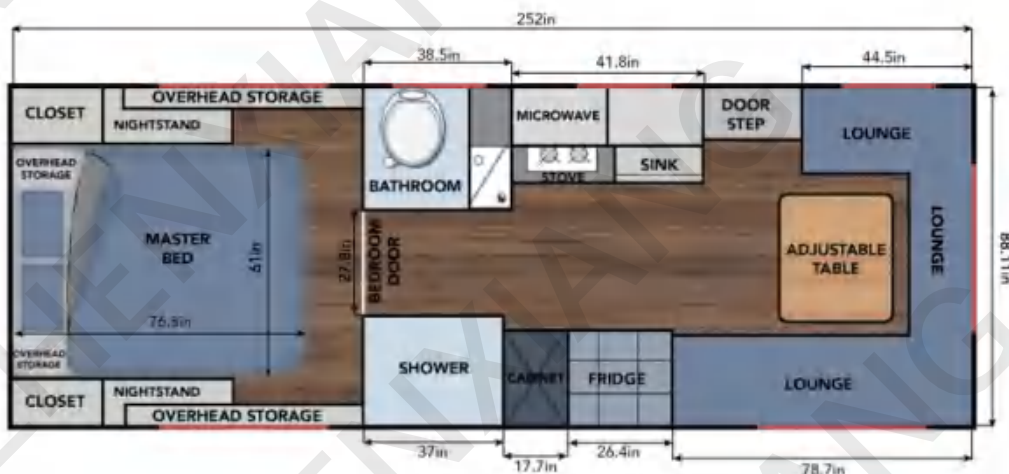


zhenxiang

YD-21Q

TRAVEL TRAILER

SLEEPS4



Size	
Internal height	1.9m
Internal length of vehicle body	6.4m
External body length	8.6m
Outer body width	2.3m
External body height	3.15m
Net weight	2940KG
Front end weight	290KG
Total weight	3500KG
Exterior decoration	
Material	Aluminum plastic board+aluminum flower board
Stone blocking/bumper	protecting the bottom of the RV
Thermal insulation	R16 foam insulation board is used for the roof and body
Roof	Whole aluminum panel+roof ventilation window
Elevated roof	made of specialized canvas with mesh windows for outdoor use
Shower	Outdoor cold/hot water shower
Windows	3 European style windows with mosquito screen and privacy shading curtains
Sunshade	Manual sunshade with 2 brackets
Toolbox	Large storage space, front toolbox with 2 gas tank supports Rack and 2 oil drum brackets
Bar counter	Lockable folding bar counter
Kitchen	stainless steel water basin, gas stove, and large preparation table
Interior	
Bathroom	Wet and dry separation bathroom
Lounge	Equipped with dining table and high-end leather sofa, which can be converted into a bed
Kitchen	equipped with a stove, water basin, microwave, and refrigerator
Sleep structure	1x double bed and 1x sofa bed
Floor	Wood grain floor leather
Cabinet	Malaysian lightweight wood with modern 5-star wood grain finish. All cabinets use Gas spring support with push open travel safety lock and drawer
Artificial leather	khaki high-quality artificial leather
Entrance door	With multiple safety locks and a separate built-in screen door

Power	
Power system	The 12v/220V power system is equipped with customized black series labels 2000W inverter and control panel
Battery	4x100AH deep cycle battery
Solar panel	High efficiency single crystal flexible solar panel installed on the roof, up to 400W
Indoor lighting	The bedroom and living room are equipped with LED reading lights
Outdoor lighting	Install width/position lights and front/rear LED headlights on both sides of the vehicle body
Socket	Internal/external 12V/USB socket
Mains	30A socket
Control panel	circuit breakers, digital instruments, and power readings
Chassis	
Traction frame/chassis	made of hot-dip galvanized steel pipe, with key parts welded with reinforcing plates
Independent suspension	Each independent cantilever is equipped with dual shock absorbers and coil springs
Tires	265x75x R16 off-road all terrain tires, standard with one spare tire
Wheel hub	16 inch iron wheel hub with black coating
Brake	12 inch electric brake+handbrake; The braking system includes 2 safety chains
Tractor	Australian ADR certified off-road tractor with BLACK SERIES logo
Signal light connector	7-core plug
Anderson plug	50 A
Guide wheel	A swinging heavy-duty 10 "guide wheel for off-road use
Trailer ring	2 trailer rings at the rear of the vehicle body
Pipeline	
Bathroom	Outdoor bathroom tent and indoor integrated fiberglass bathroom
Water basin	Indoor large bowl shaped water basin and outdoor stainless steel water basin
Toilet	Ceramic toilet
Water tank	
Drinking water tank	60L, triple filtration system
Clean water tank	240L, with aluminum flower board protection water tank
Grey water tank	100L, with aluminum flower board protection water tank
Black water tank	100L, with aluminum flower board protection water tank

Electrical appliances/accessories	
Refrigerator	6 cubic feet refrigerator
Stove	Outdoor and indoor gas stoves
Gas	2x20L gas tank
Heating fan	16000BTU thermostat control
Air conditioning	Dormeda overhead air conditioning
Safety configuration	Fire extinguisher, smoke alarm, and gas/carbon oxide alarm
Entertainment system	CD/FM/IPOD/Bluetooth/USB function radio
	Indoor 2x speakers
	2x marine level horn outside the vehicle
	24 "TV with DVD function
Antenna	High-definition TV antenna with built-in safety lock
Microwave oven	x1
Range hood	Light and thin dual fan lamped range hood

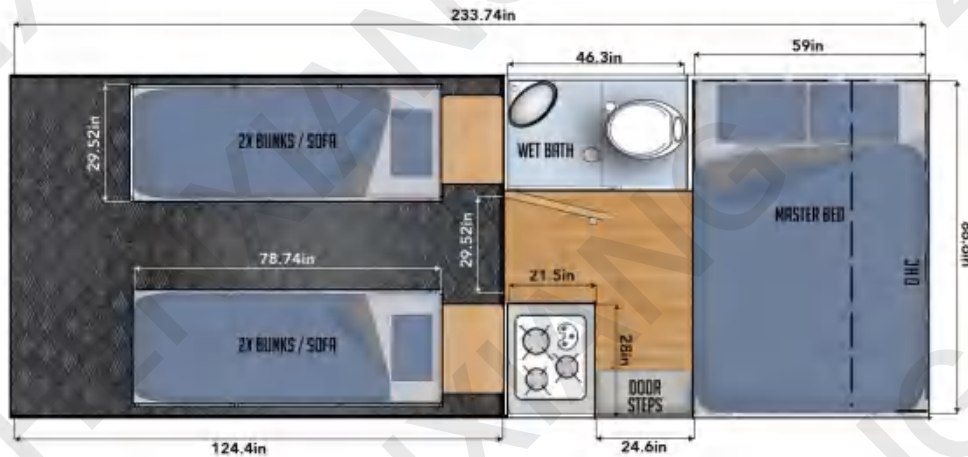


zhenxiang

YD-19T

TRAVEL TRAILER

SLEEPS 6



Size	
Internal height	2m
External body length	8m
External body height	3.2m
Outer body width	2.3m
Internal length of vehicle body	5.8m
Net weight	2800KG
Front end weight	320KG
Total weight	3500KG
Exterior decoration	
Material	Aluminum plastic board+aluminum flower board
Stone blocking/bumper	protecting the bottom of the RV
Thermal insulation	R16 foam insulation board is used for the roof and body
Roof	Whole aluminum panel+roof ventilation window
Shower	Outdoor cold/hot water shower
Sunshade	Manual sunshade with 2 brackets
Windows	3 European style windows with mosquito screen and privacy shading curtains
Sunshade	Manual sunshade with 2 brackets
Toolbox	Large storage space, front toolbox with 2 gas tank supports Rack and 2 oil drum brackets
Bar counter	Lockable folding bar counter
Kitchen	stainless steel water basin, gas stove, and large preparation table
Interior	
Bathroom	Integrated fiberglass bathroom with exhaust fan and toilet
Lounge	Equipped with dining table and high-end leather sofa, which can be converted into a bed
Kitchen	equipped with a stove, water basin, microwave, and refrigerator
Sleep structure	1x double bed and 4x upper and lower bunks
Floor	Wood grain floor leather
Cabinet	Malaysian lightweight wood with modern 5-star wood grain finish. All cabinets use Gas spring support with push open travel safety lock and drawer
Artificial leather	khaki high-quality artificial leather
Entrance door	With multiple safety locks and a separate built-in screen door

Power	
Power system	The 12v/220V power system is equipped with customized black series labels 2000W inverter and control panel
Battery	4x100AH deep cycle battery
Solar panel	High efficiency single crystal flexible solar panel installed on the roof, up to 400W
Indoor lighting	The bedroom and living room are equipped with LED reading lights
Outdoor lighting	Install width/position lights and front/rear LED headlights on both sides of the vehicle body
Socket	Internal/external 12V/USB socket
Mains	30A socket
Control panel	circuit breakers, digital instruments, and power readings
Chassis	
Traction frame/chassis	made of hot-dip galvanized steel pipe, with key parts welded with reinforcing plates
Independent suspension	Each independent cantilever is equipped with dual shock absorbers and coil springs
Tires	265x75x R16 off-road all terrain tires, standard with one spare tire
Wheel hub	16 inch iron wheel hub with black coating
Brake	12 inch electric brake+handbrake; The braking system includes 2 safety chains
Tractor	Australian ADR certified off-road tractor with BLACK SERIES logo
Signal light connector	7-core plug
Anderson plug	50 A
Guide wheel	A swinging heavy-duty 10 "guide wheel for off-road use
Trailer ring	2 trailer rings at the rear of the vehicle body
Pipeline	
Bathroom	Outdoor bathroom tent and indoor integrated fiberglass bathroom
Water basin	Indoor large bowl shaped water basin and outdoor stainless steel water basin
Toilet	Ceramic toilet
Water tank	
Drinking water tank	100L, triple filtration system
Clean water tank	100L * 2, with aluminum flower plate protection water tank
Grey water tank	100L, with aluminum flower board protection water tank
Black water tank	100L, with aluminum flower board protection water tank

Electrical appliances/accessories	
Refrigerator	2.6 cubic feet refrigerator
Stove	Outdoor and indoor gas stoves
Gas	2x20L gas tank
Heating fan	16000BTU thermostat control
Air conditioning	Dormeda overhead air conditioning
Safety configuration	Fire extinguisher, smoke alarm, and gas/carbon oxide alarm
Entertainment system	CD/FM/IPOD/Bluetooth/USB function radio
	Indoor 2x speakers
	2x marine level horn outside the vehicle
	24 "TV with DVD function
Antenna	High-definition TV antenna with built-in safety lock
Microwave oven	x1
Range hood	Light and thin dual fan lamped range hood
Garage	
Closed garage	The living room and garage are separate areas with partition doors
Floor	aluminum flower board
Coupler	Multiple hooks located in the garage area
Terrace configuration	The rear door can be converted into a terrace with a tent, bearing a weight of 1600 pounds
Slope weighing	3200 pounds
Garage size	3 * 2.1 * 2m (L * W * H)

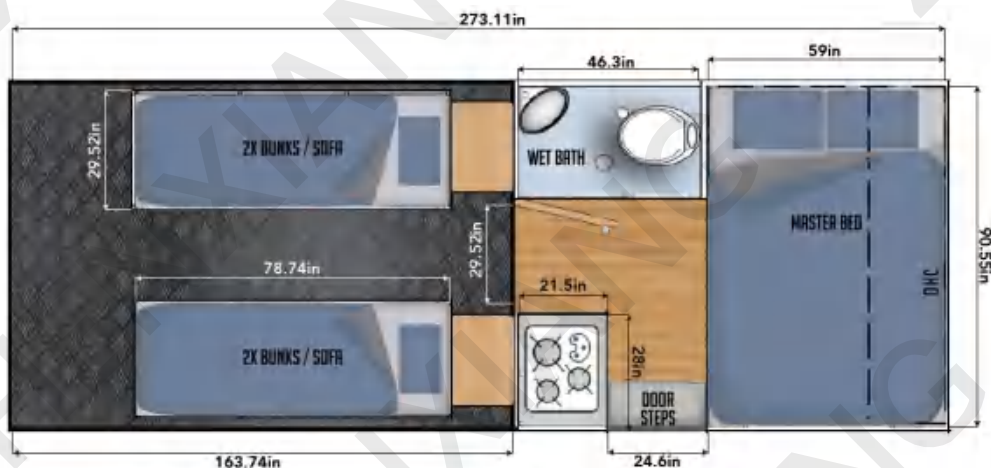


zhenxiang

YD-22T

TRAVEL TRAILER

SLEEPS 6



Size	
Internal height	2m
External body length	8.5m
External body height	3.2m
Outer body width	2.4m
Internal length of vehicle body	6.7m
Net weight	2900KG
Front end weight	320KG
Total weight	3500KG
Exterior decoration	
Material	Aluminum plastic board+aluminum flower board
Stone blocking/bumper	protecting the bottom of the RV
Thermal insulation	R16 foam insulation board is used for the roof and body
Roof	Whole aluminum panel+roof ventilation window
Shower	Outdoor cold/hot water shower
Sunshade	Manual sunshade with 2 brackets
Windows	3 European style windows with mosquito screen and privacy shading curtains
Sunshade	Manual sunshade with 2 brackets
Toolbox	Large storage space, front toolbox with 2 gas tank supports Rack and 2 oil drum brackets
Bar counter	Lockable folding bar counter
Kitchen	stainless steel water basin, gas stove, and large preparation table
Interior	
Bathroom	Integrated fiberglass bathroom with exhaust fan and toilet
Lounge	Equipped with dining table and high-end leather sofa, which can be converted into a bed
Kitchen	equipped with a stove, water basin, microwave, and refrigerator
Sleep structure	1x double bed and 4x upper and lower bunks
Floor	Wood grain floor leather
Cabinet	Malaysian lightweight wood with modern 5-star wood grain finish. All cabinets use Gas spring support with push open travel safety lock and drawer
Artificial leather	khaki high-quality artificial leather
Entrance door	With multiple safety locks and a separate built-in screen door

Power	
Power system	The 12v/220V power system is equipped with customized black series labels 2000W inverter and control panel
Battery	4x100AH deep cycle battery
Solar panel	High efficiency single crystal flexible solar panel installed on the roof, up to 400W
Indoor lighting	The bedroom and living room are equipped with LED reading lights
Outdoor lighting	Install width/position lights and front/rear LED headlights on both sides of the vehicle body
Socket	Internal/external 12V/USB socket
Mains	30A socket
Control panel	circuit breakers, digital instruments, and power readings
Chassis	
Traction frame/chassis	made of hot-dip galvanized steel pipe, with key parts welded with reinforcing plates
Independent suspension	Each independent cantilever is equipped with dual shock absorbers and coil springs
Tires	265x75x R16 off-road all terrain tires, standard with one spare tire
Wheel hub	16 inch iron wheel hub with black coating
Brake	12 inch electric brake+handbrake; The braking system includes 2 safety chains
Tractor	Australian ADR certified off-road tractor with BLACK SERIES logo
Signal light connector	7-core plug
Anderson plug	50 A
Guide wheel	A swinging heavy-duty 10 "guide wheel for off-road use
Trailer ring	2 trailer rings at the rear of the vehicle body
Pipeline	
Bathroom	Outdoor bathroom tent and indoor integrated fiberglass bathroom
Water basin	Indoor large bowl shaped water basin and outdoor stainless steel water basin
Toilet	Ceramic toilet
Water tank	
Drinking water tank	100L, triple filtration system
Clean water tank	100L * 2, with aluminum flower plate protection water tank
Grey water tank	100L, with aluminum flower board protection water tank
Black water tank	100L, with aluminum flower board protection water tank

Electrical appliances/accessories	
Refrigerator	2.6 cubic feet refrigerator
Stove	Outdoor and indoor gas stoves
Gas	2x20L gas tank
Heating fan	16000BTU thermostat control
Air conditioning	Dormeda overhead air conditioning
Safety configuration	Fire extinguisher, smoke alarm, and gas/carbon oxide alarm
Entertainment system	CD/FM/IPOD/Bluetooth/USB function radio
	Indoor 2x speakers
	2x marine level horn outside the vehicle
	24 "TV with DVD function
Antenna	High-definition TV antenna with built-in safety lock
Microwave oven	x1
Range hood	Light and thin dual fan lamped range hood
Garage	
Closed garage	The living room and garage are separate areas with partition doors
Floor	aluminum flower board
Coupler	Multiple hooks located in the garage area
Terrace configuration	The rear door can be converted into a terrace with a tent, bearing a weight of 1600 pounds
Slope weighing	3200 pounds
Garage size	4 * 2.1 * 2m (L * W * H)

