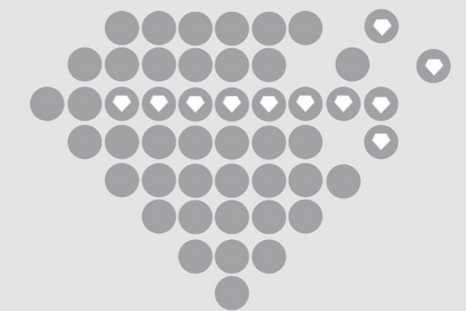


Henan Boreas New Material Co., Ltd

Since 1990


Boreas



Contact Us

 sales@usboreas.com

 www.usboreas.com

 East of Chunlan Road, Wutong Street, High-Tech Development Zone, Zhengzhou 450000, China

Order Example:

Grade: CBN-B1

Grit Size: 50/60

Quantity: 2000 carat

Packing:

Custom packing accept

Units :

1 gram = 5 Carat (ct)

Micrometer (μm , Micron)

1 micrometer = 0.001 millimeter


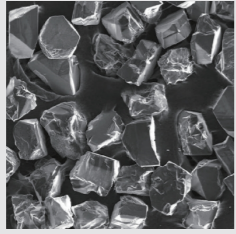

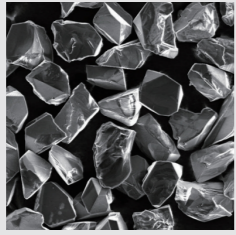

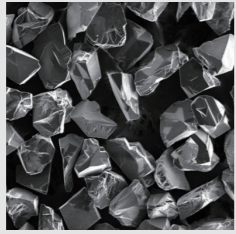

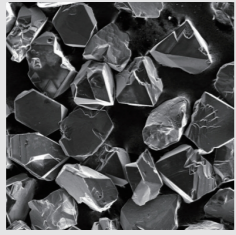
Cubic Boron Nitride


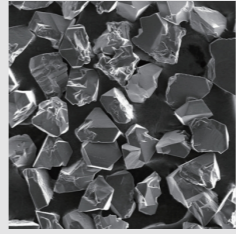

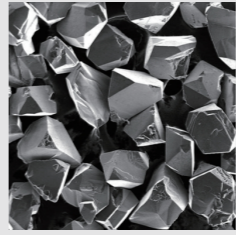
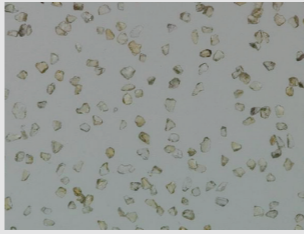
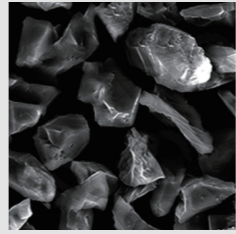
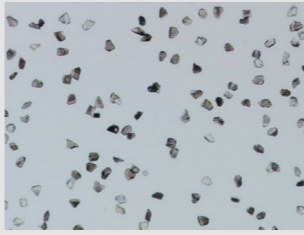
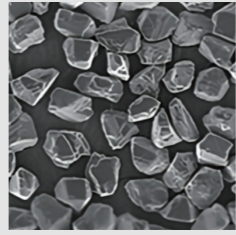
Company Overview

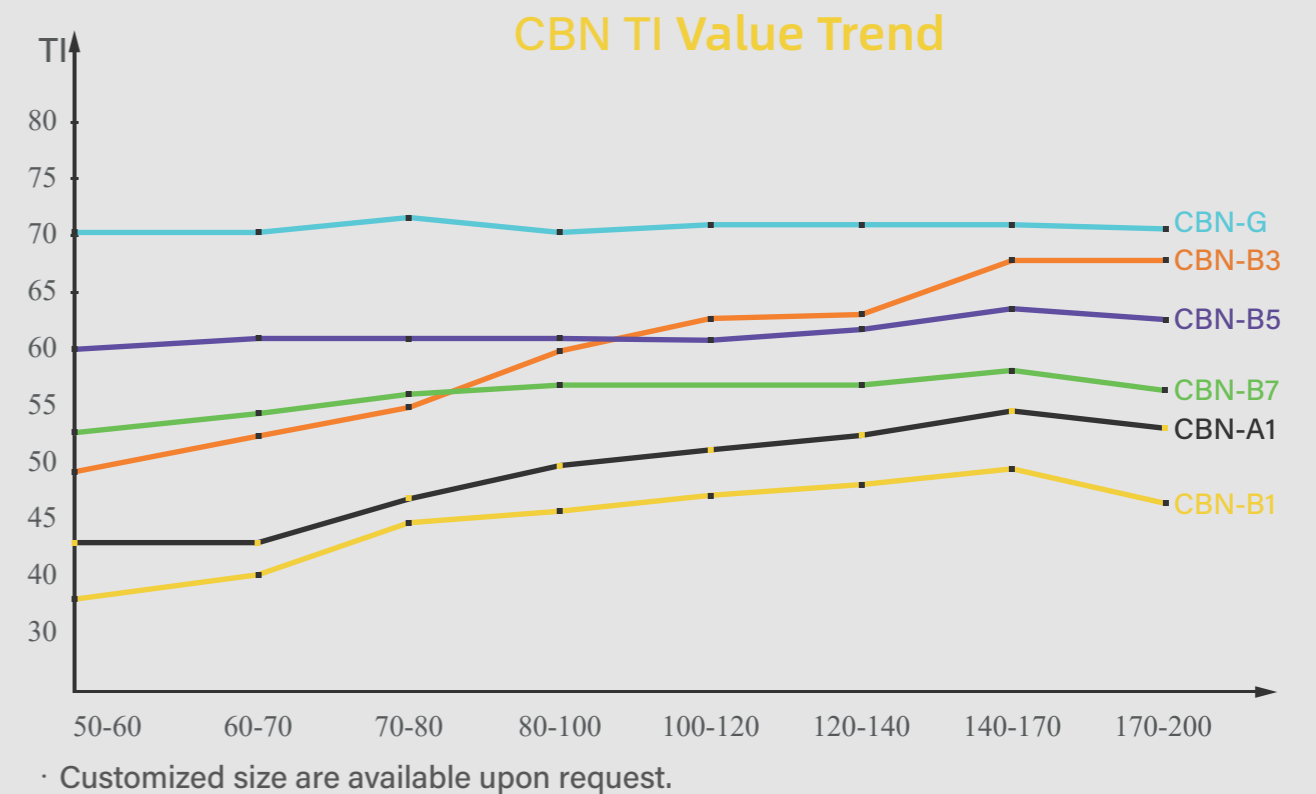
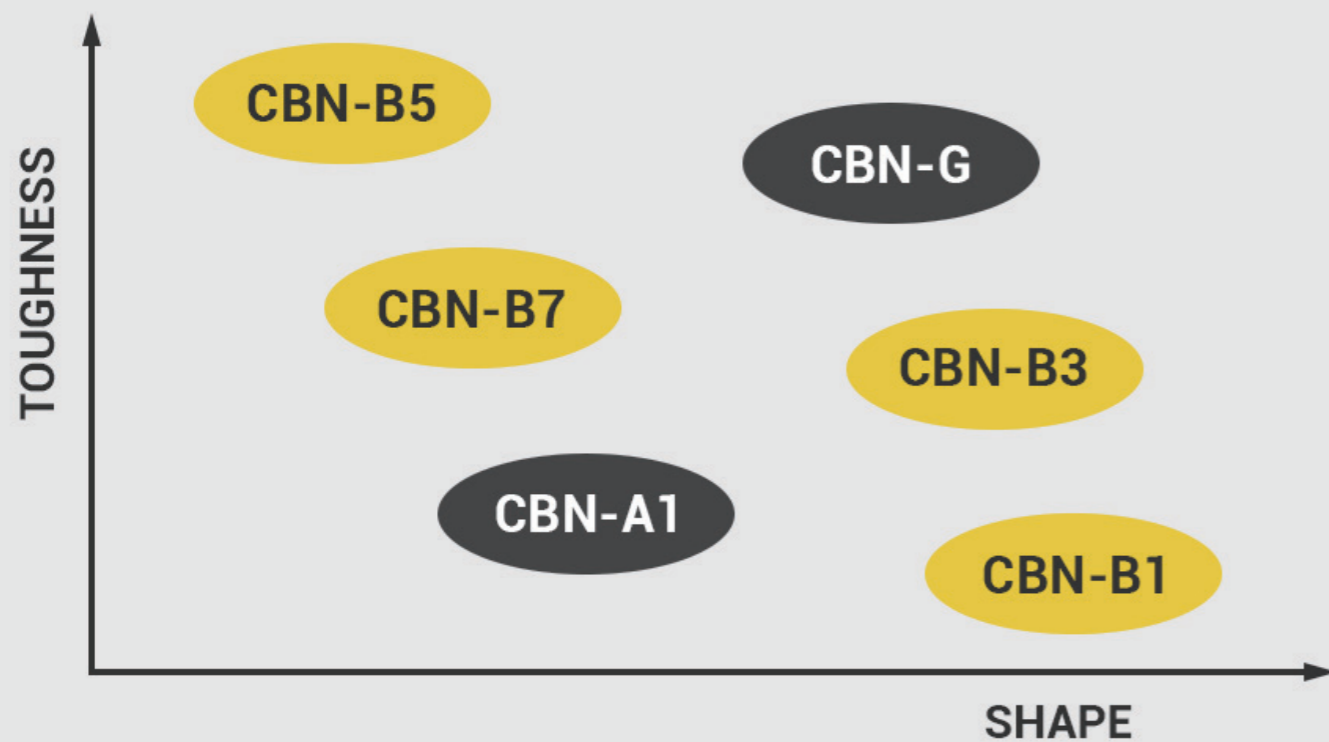
Establish and devote to manufacturing superhard abrasive products in 1990, an executive member of IDACN.

Advanced production & testing equipment, strong technical capability ensures all the products are produced strictly with the accordance of national standards, customized diamond products are available upon customers' different requirements.

Cubic Boron Nitride

		CBN-B 1	<ul style="list-style-type: none"> · Black mono-crystal & Irregular shape. · High performance & Grinding efficiency. · Tools for resin bond & Vitrified bond.
		CBN-B 3	<ul style="list-style-type: none"> · Bright black monocrystalline. · High thermal stability & High strength. · Vitrified bond & Metal bond used in high-temperature and high-speed grinding system.
		CBN-B 5	<ul style="list-style-type: none"> · Dark brown & Angular particle shape. · High thermal stability & High strength. · Suited for use in the most demanding vitrified, resin and metal bond system.
		CBN-B 7	<ul style="list-style-type: none"> · Dark brown & Blocky shape. · High thermal stability & High crystallized. · Suitable for resin bond, metal bond and electroplated system.

		CBN-A 1	<ul style="list-style-type: none"> · Clear amber & Monocrystalline. · Irregular shape with angularity. · Medium strength and Friable crystals. · It is widely applied to resin bond systems.
		CBN-G	<ul style="list-style-type: none"> · Golden color & monocrystalline. · Regular shape & good transparency. · High thermal stability & High strength. · Suitable for metal & electroplated bond tools.
		CBN-AM	<ul style="list-style-type: none"> · Amber color & CBN micron powder. · High grinding efficiency and thermal stability. · Suitable for making PCBN compact & sintered body of polycrystalline with longer life.
		CBN-BM	<ul style="list-style-type: none"> · Black color & CBN micron powder. · High grinding efficiency and thermal stability. · Used in grinding and polishing ferrous metal, suitable for making honing oilstone.



Coated Diamond



Coating product

Nickel Coating Weight increase: 30%-60%

Titanium Coating Weight increase: 1%

Copper Coating Weight increase: 50%

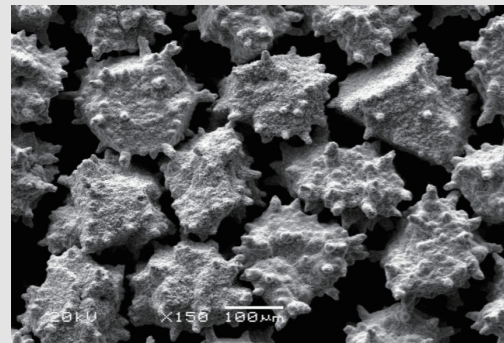
Special requirements can be customized

Advantages:

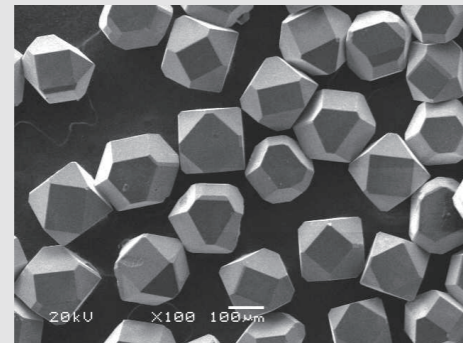
- Prevent diamond surface from chemical etching and oxidation;
- Increase bond retention, minimize the instance of crystal pull-out;
- Avoid the diamond peeling off early, extend the service life of diamond tools;
- Rough and spiny surface, improve the retention between diamond and bond.

Application field:

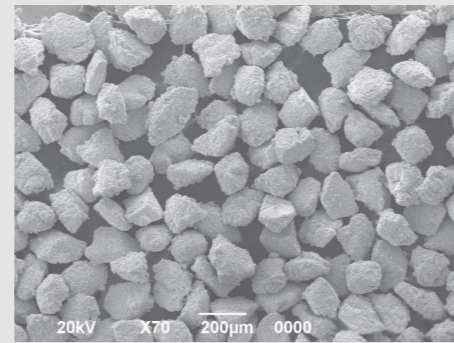
- Copper coating mainly for metal bond products;
- Electroplated nickel coating mainly for resin bond products;
- Titanium coating mainly for metal and ceramic bond products;
- Chemical nickel coating mainly for resin bond products.



Nickel Coated



Titanium Coated



Copper Coated

CBN Available Size

Grade Grain Size	CBN-B1	CBN-B3	CBN-B5	CBN-B7	CBN-A1	CBN-G	CBN-AM	CBN-BM
0-0.5							○	○
0-1							○	○
1-2							○	○
2-4							○	○
3-6							○	○
4-8							○	○
5-10							○	○
6-12							○	○
7-14							○	○
8-12							○	○
8-16							○	○
10-15							○	○
10-20							○	○
15-25							○	○
20-30							○	○
22-36							○	○
30-40							○	○
36-54							○	○
40-50							○	○
25-30					○	○		
30-35					○	○		
35-45					○	○		
40-45					○	○		
50-60	○	○	○	○	○	○		
60-70	○	○	○	○	○	○		
70-80	○	○	○	○	○	○		
80-100	○	○	○	○	○	○		
100-120	○	○	○	○	○	○		
120-140	○	○	○	○	○	○		
140-170	○	○	○	○	○	○		
170-200	○	○	○	○	○	○		
200-230	○	○	○	○	○	○		
230-270	○	○	○	○	○	○		
270-325	○	○	○	○	○	○		
325-400	○	○	○	○	○	○		

○ = Available