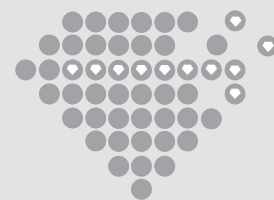


Henan Boreas New Material Co., Ltd

Since 1990

**Boreas**



## Micron/Mesh Diamond Powder

### Contact Us

[sales@usboreas.com](mailto:sales@usboreas.com)



[www.usboreas.com](http://www.usboreas.com)

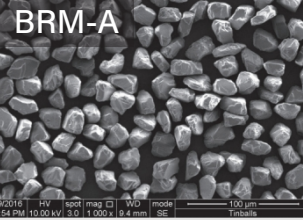
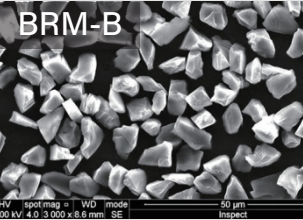
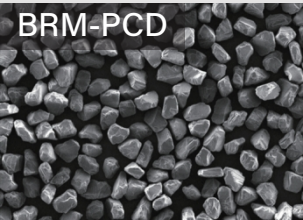
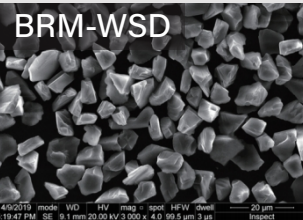
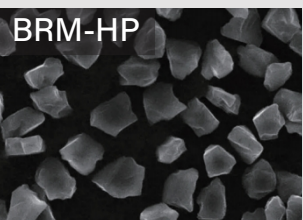
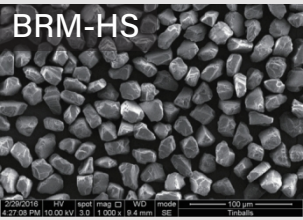


East of Chunlan Road, Wutong Street, High-Tech  
Development Zone, Zhengzhou 450000, China




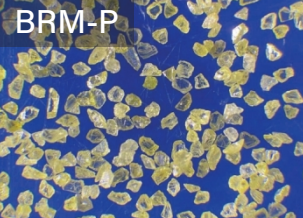
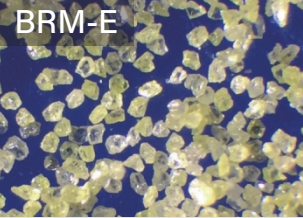


# Micron Diamond Powder

Grade	Available Size	Characteristics	Application
 <p><b>BRM-A</b></p>	0-0.25 to 40-60	<ul style="list-style-type: none"> <li>· Low impurity</li> <li>· High strength</li> <li>· Blocky crystal shape</li> <li>· Good dispersion</li> </ul>	<ul style="list-style-type: none"> <li>· Used for Metal &amp; Vitrified bond.</li> <li>· Electroplated diamond tools.</li> <li>· Diamond paste and slurry for cutting.</li> <li>· Polishing electronic components.</li> </ul>
 <p><b>BRM-B</b></p>	0-0.25 to 40-60	<ul style="list-style-type: none"> <li>· Sharpened crystal shape</li> <li>· Low impurity</li> <li>· High strength</li> <li>· Uniform PSD</li> </ul>	<ul style="list-style-type: none"> <li>· Resin &amp; Vitrified &amp; Metal bond.</li> <li>· Diamond slurry for grinding.</li> <li>· Electroplated diamond tools.</li> <li>· Polishing stone, glass, ceramic, etc.</li> </ul>
 <p><b>BRM-PCD</b></p>	0-0.25 to 40-60	<ul style="list-style-type: none"> <li>· Low impurity</li> <li>· Good thermal stability.</li> <li>· Excellent dispersion</li> <li>· Concentrated PSD</li> </ul>	<ul style="list-style-type: none"> <li>· For synthesizing PCD wire drawing die blank.</li> <li>· Making superior metal &amp; vitrified bond.</li> <li>· Making superior electroplated diamond tools.</li> </ul>
 <p><b>BRM-WSD</b></p>	0-0.25 to 40-60	<ul style="list-style-type: none"> <li>· Regular crystal shape</li> <li>· High strength</li> <li>· Concentrated PSD</li> <li>· High cutting efficiency</li> </ul>	<ul style="list-style-type: none"> <li>· Make diamond wire for dicing.</li> <li>· Electroplated diamond tools.</li> <li>· Used for premium diamond grinding tools.</li> <li>· Used for polishing tools.</li> </ul>
 <p><b>BRM-HP</b></p>	0-0.25 to 40-60	<ul style="list-style-type: none"> <li>· Good fluidity</li> <li>· Good dispersity</li> <li>· Good therm stability.</li> </ul>	<ul style="list-style-type: none"> <li>· Used for superior PCD/PDC synthesis.</li> <li>· Single layer &amp; Hybrid bond diamond tools.</li> </ul>
 <p><b>BRM-HS</b></p>	0-0.25 to 40-60	<ul style="list-style-type: none"> <li>· Blocky crystal shape</li> <li>· Good therm stability</li> <li>· Longer tool life</li> </ul>	<ul style="list-style-type: none"> <li>· Recommended for fine ceramics, glass, sapphire, aerospace materials, 3C products, etc.</li> </ul>



# Mesh Diamond Powder

Grade	Available Size	Characteristics	Application
 <p><b>BRM-Z</b></p>	50-60 to 325-400	<ul style="list-style-type: none"> <li>· Golden color</li> <li>· Blocky shape</li> <li>· Monocrystalline particle</li> <li>· Higher purity &amp; toughness</li> </ul>	<ul style="list-style-type: none"> <li>· Suitable for metal, vitrified and electroplated bond system.</li> </ul>
 <p><b>BRM-P</b></p>	50-60 to 400-500	<ul style="list-style-type: none"> <li>· Yellow color</li> <li>· Irregular crystal</li> <li>· Monocrystalline particle</li> <li>· Higher grinding efficiency</li> </ul>	<ul style="list-style-type: none"> <li>· Suitable for resin &amp; vitrified &amp; metal bond and electroplated system.</li> </ul>
 <p><b>BRM-E</b></p>	50-60 to 700-800	<ul style="list-style-type: none"> <li>· Yellow-green color</li> <li>· Irregular crystal</li> <li>· Monocrystalline particle</li> <li>· Lower toughness</li> </ul>	<ul style="list-style-type: none"> <li>· Suitable for resin &amp; vitrified bond system.</li> </ul>

## Quality Control



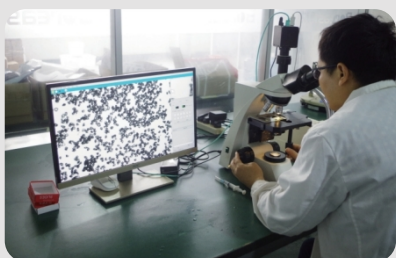
Workshop



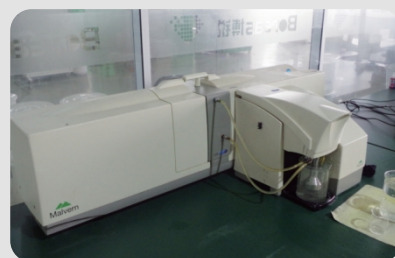
Centrifugal machine



ICP



Microscope



Malvern 2000



SEM



# Coated Diamond

---

## Coating product

---

Nickel Coating                      Weight increase: 30%-60%

---

Titanium Coating                      Weight increase: 1%

---

Copper Coating                      Weight increase: 50%

---

Special requirements can be customized

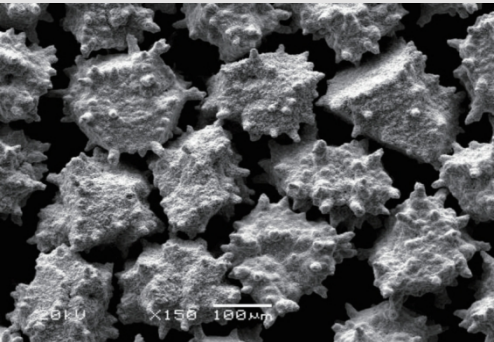
---

## Advantages:

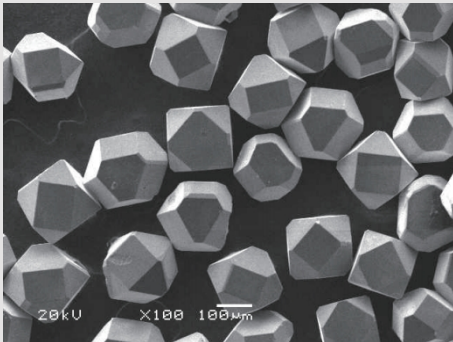
- Prevent diamond surface from chemical etching and oxidation;
  - Increase bond retention, minimize the instance of crystal pull-out;
  - Avoid the diamond peeling off early, extend the service life of diamond tools;
  - Rough and spiny surface, improve the retention between diamond and bond.
- 

## Application field:

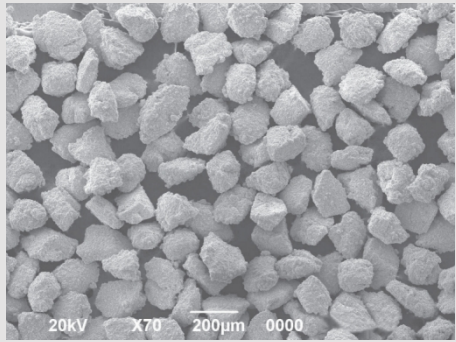
- Copper coating mainly for metal bond products;
  - Electroplated nickel coating mainly for resin bond products;
  - Titanium coating mainly for metal and ceramic bond products;
  - Chemical nickel coating mainly for resin bond products.
- 



Nickel Coated



Titanium Coated



Copper Coated

# Available Grain Size

Grade Available Size	BRM-Z	BRM-P	BRM-E	BRM-A	BRM-B	BRM-PCD	BRM-WSD	BRM-HS	BRM-HP
0-0.25				○	○	○	○	○	○
0-0.5				○	○	○	○	○	○
0-1				○	○	○	○	○	○
1-2				○	○	○	○	○	○
2-4				○	○	○	○	○	○
3-6				○	○	○	○	○	○
4-8				○	○	○	○	○	○
5-10				○	○	○	○	○	○
6-12				○	○	○	○	○	○
7-14				○	○	○	○	○	○
8-12				○	○	○	○	○	○
8-16				○	○	○	○	○	○
10-20				○	○	○	○	○	○
15-25				○	○	○	○	○	○
20-30				○	○	○	○	○	○
22-36				○	○	○	○	○	○
30-40				○	○	○	○	○	○
20-40				○	○	○	○	○	○
36-54				○	○	○	○	○	○
40-50				○	○	○	○	○	○
40-60				○	○	○	○	○	○
50-60	○	○	○						
60-70	○	○	○						
70-80	○	○	○						
80-100	○	○	○						
100-120	○	○	○						
120-140	○	○	○						
140-170	○	○	○						
170-200	○	○	○						
200-230	○	○	○						
230-270	○	○	○						
270-325	○	○	○						
325-400	○	○	○						
400-500	○	○	○						

Remark: Other grain sizes can be customized according to customer's different requirements.

○ = Available