

R6系列 在线激光镭雕机 R6 Series Online laser marking machine



★ 领先行业的独创软件，源代码自主开发，一站式解决客户个性化需求及后期功能拓展。

Original software which leading the industry, efficient, stable and easy to use. Independent development of the source code, One-stop solution for customer's individual demand and function expansion in anaphase stage.

多种激光类型可选

Various laser types are available

作业功能完备

Full-featured operation

高精低耗 简洁易用

High precision and low consumption

Simple and easy to operate



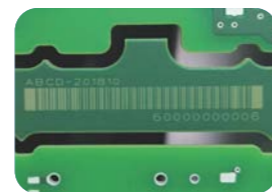
产品特点

- 全自动控制，PC+QC软件控制，Windows 10操作系统。
- 可选择配置CO2/FAYB/GR/UV激光打标系统，配合XY精密定位，CCD+MARK精确定位。打标位置精度0.02mm以内。
- 可刻印汉字，英文、数字、图表、流水号、LOGO、条形码、二维码等内容。
- 可以接入shopfloor\MES系统。
- 支持Geber,DXF等文档导入。
- 支持刻印各种类型PCB、FPC、金属屏蔽罩等不同的材料表面。
- 具有高品质、高良率、高稳定性、无生产耗材等特点。

Product Features

- Automatic control, PC + QC software control, Windows 10 operating system.
- Optional configuration of CO2 / fayb / Gr / UV laser marking system, with XY precision positioning, CCD + mark precise positioning. The accuracy of marking position is within 0.02mm.
- It can print Chinese characters, English, numbers, charts, serial numbers, LOGO, bar code, two-dimensional code, etc.
- Access to the shopfloor / MES system.
- Support Geber, DXF and other document import.
- Support printing various types of PCB, FPC, metal shield cover and other different material surface.
- With high quality, high efficiency, high stability, no production consumables.

应用领域 Application Area



1.2mm
Mini Barcode

≥99.9%
Pass rate

Print and Read
simultaneously

Anti-missing code
Anti-error code
Anti-re-code

技术参数 Technique Parameter

设备名称 Product Name	激光镭雕机 Laser marking machine		
激光类型 Laser type	CO ² /UV/FB/GR		
激光功率 Laser power	5-20W		
基本规格 Basic specifications			
条码最小刻印 Minimum engraved barcode	1.2mm		
定位系统 Positioning system	CCD+mark定位 / CCD + Mark positioning		
控制系统 Control system	PC+轴卡+伺服 / PC + Shaft Card + Servo		
条码检测系统 Barcode detection system	CCD在线读取检测 / CCD online reading detection		
PCB最大尺寸(mm) Maximum PCB size	标准型(Standard) : L50*W50~L510*W460/翻板型(Turnover mechanism)L50*W50~L450*W450		
结构 Structure	标准型 Standard	PCB厚度 PCB thickness	0.5~5mm
		PCB通过高度 PCB passing height	UP:25mm/DOWN:15mm
	内置翻板型 Turnover mechanism of built-in type	PCB厚度 PCB thickness	0.5~3mm
		PCB通过高度 PCB passing height	UP:15mm/DOWN:15mm (过板高度可按需调整) Passing height can be adjusted based on detailed demand
轨道传送速度 Track transmission speed	50-300mm/s		
轨道传输方向 Direction of track transmission	左→右 (右至左可选) / / Left→Right Right→Left (optional)		
轨道宽度调整 Track width adjustment	自动调整 / Automatic adjustment		
刻印对象/种类 Engraving object/type	文字/character 一维条形码/bar code 二维码/QR code 图形数据/graphic data		
烟雾处理方式 Smoke processing mode	烟雾净化处理系统 / Smoke purification system		
防重刻功能 Poka-yoke function	有/Yes		
坏板识别功能 Defective board recognition function	有/Yes		
条码数据来源 Bar code data source	从MES获取, 或自动生成 / Obtain from MES, or generate automatically		
系统连接功能 System connection function	可连接Shopfloor、MES、IMS等智能管理系统 Access to smart management systems such as Shopfloor, MES, IMS, etc.		
条码等级分析 Bar code level analysis	支持 / Support		
其他/Others			
输入电压 Input voltage	AC220V /7A 50Hz		
气压源 Pneumatic supply	5-7Kgf/cm ² 或0.5-0.7MPa		
环境要求 Environmental requirement	0-40℃ 35-85%RH		
设备功率 Equipment power	约(Appro)1.5KW		
设备尺寸(长*宽*高mm) Dimension of the machine(L*W*H)	约(Appro)970*1860*1650mm (以具体型号尺寸为准) Take the specific model size as criterion		
设备重量 Equipment weight	约700KG / Approx 700KG		