



XC-3100

X-Ray high-precision intelligent dispensing machine

High precision X-Ray counting

X-Ray counting machine

series offline X-Ray system, fast counting and inventory



Tape Reel, JEDEC Tray, IC moisture sensitive bag



XC-3100 is mainly used for rapid counting of reel-type materials in the SMT industry. It can count all types of materials such as 7-15-inch Tape Reel/JEDEC Tray/IC moisture-sensitive packages. The material types include all resistance-capacitance materials and IC materials. Use X-ray imaging technology to detect production materials and obtain image information for rapid counting, and connect equipment data information with the customer's MES system.

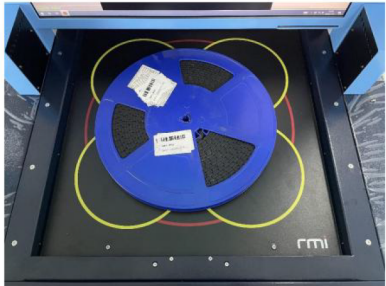
Functional interpretation :

Inductive printing material label function

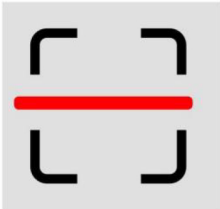
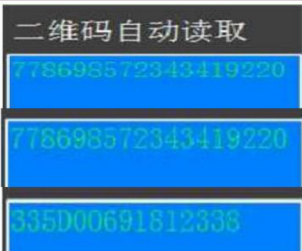



The inductive printing material label function effectively prevents mislabeling, random labeling, and missing barcode labeling, and improves the accuracy of information entry.


Multi-reel and single-reel functions can be ordered



Automatically read QR code function (optional)

Save time and improve efficiency, automatically read barcodes

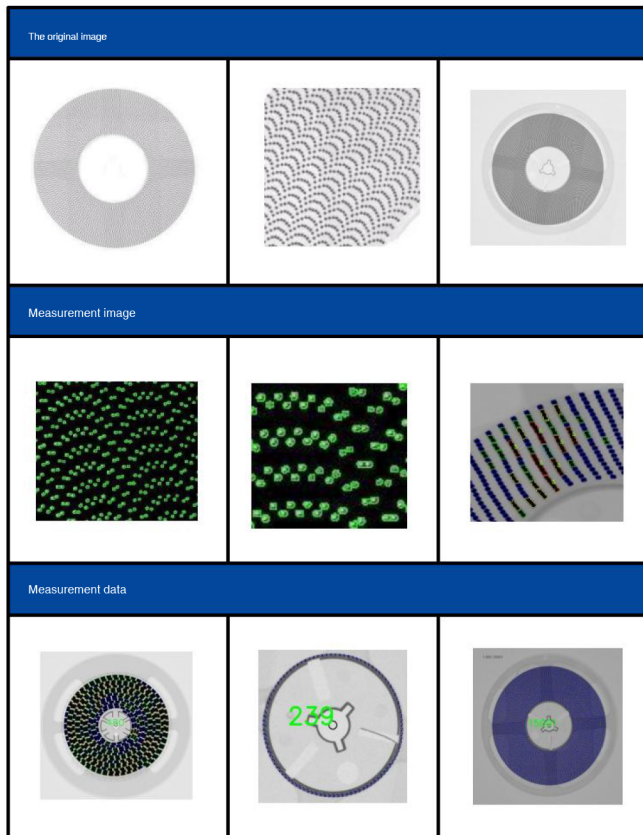


Choose single/multiple inventory material mode according to needs

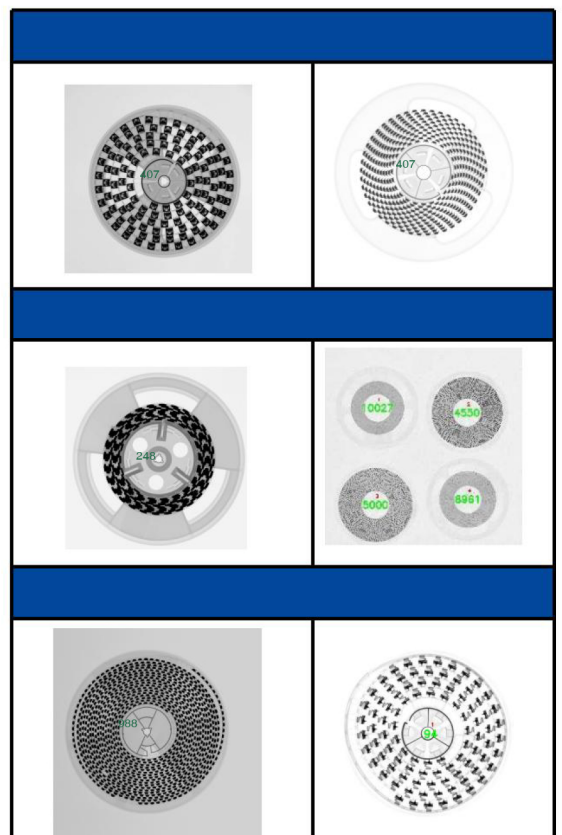
Features and advantages:

Function	Inductive printing material label function
	Can order 4 trays of ingredients and single tray of ingredients functions
	Intelligent code reading (optional)
	Data management
Features	For example, the recognition accuracy rate of 0201 is as high as 99.99%.
	No fear of special-shaped materials, bulk materials, and multiple trays
	Automatic fluorescent imaging, automatic analysis and automatic point counting
	No operating table, the equipment is equipped with a touch industrial display to save space
	Read all label codes of the material tray and output MES
	Connect to MES and automatically update data
Advantage	Can click on different trays at the same time, image at the same time, and automatically number/count
	Quick reading in 6-10 seconds
	Reduce the number of processes, shorten process routes, and improve efficiency
	Comes with its own database, providing query and printing

AI algorithm principle (Algorithm Principle):



Calculation legend:



Specifications:

	Model	XC-3100
Tupe	Tupe tape	Closed
	Spatial resolution	30μm
	Tube voltage	50kV (Limit 80kV)
	Tube current	0.01-1mA
Tablet	Image acquisition method	Flat-panel digital imaging
	Imaging accuracy	139μm
	Image size	427*427mm
	Resolution	3072*3072px
	Pixel accuracy	≤2μm
Camera	Imaging speed	5 EDS/s
	Code reading pixels	20 million/inch
System	Misjudgment rate (0201)	≤0.01% (0201 for example)
	Accuracy	99.99% (0201 for example)
	Minimum part size detectable	008004
	Order record keeping	Save by day ,no capacity limit , TXT.CSV.XLS
	Operating system	WINDOWS 10
	Power supply	AC110-220V 50-60HZ
	Power	1200W
	Radition safety test	<1 uSV/H
	Repeatability testing	≥2.0sigma
	Cycle time	≤10s/time
Structure	Counting speed	6-10 S/4 tray (CHIP 0201)
	Maximum disc diameter	415mm (4-15 INCH)
	Maximum height of checkable material tray	1-80mm
	Maximum weight of detectable reels	≤10kg
	Machine size	730*1460*1960mm(L*W*H)
	Machine size (Including printer)	950*1460*1960mm(L*W*H)
	Machine weight	450kg