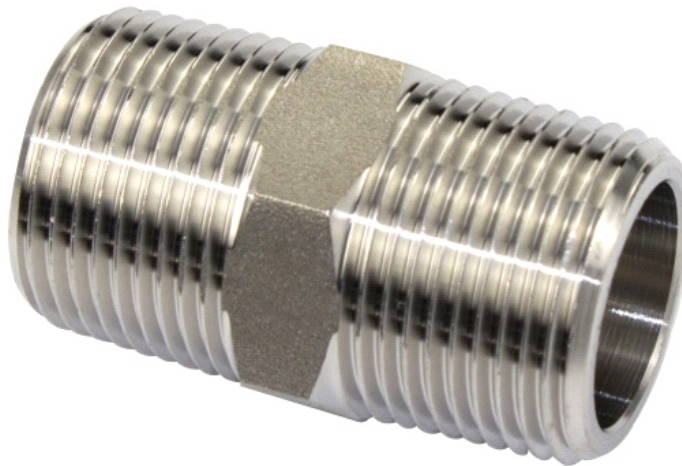


**Stainless Steel High Pressure Pipe Fittings -  
3000LBS HEX NIPPLE, M/M  
DATA SHEET  
ZL-S8516 Series**



## Description

Available in a variety of sizes:

S8516-1/4"M*1/4"M-01
S8516-3/8"M*3/8"M-01
S8516-1/2"M*1/2"M-01
S8516-3/4"M*3/4"M-01
S8516-1"M*1"M-01
S8516-1 1/4"M*1 1/4"M-01
S8516-1 1/2"M*1 1/2"M-01
S8516-2"M*2"M-01

## Specifications

Connection 1	1/4 in to 2 in R Male
Connection 2	1/4 in to 2 in R Male
Shape	Hexagon
Fitting Type	Nipple
Fitting Direction	Straight
Connection Gender 1	Male
Connection Gender 2	Male
Thread Standard 1	R (taper)
Thread Standard 2	R (taper)
Material	316 Stainless Steel
Conformity	ASME B16.11

## Dimensions

Code	A	B	C	D	E	L	Weight(g)
ZLS8516DN08	1/4"NPS	Φ8	15	Sw15	6	36	22.5
ZLS8516DN10	3/8"NPS	Φ11	16	Sw18	8	40	36.2
ZLS8516DN15	1/2"NPS	Φ14	20	Sw22	8	48	72.8
ZLS8516DN20	3/4"NPS	Φ19	21	Sw27	10	52	102.8
ZLS8516DN25	1"NPS	Φ24	25	Sw35	10	60	175.4
ZLS8516DN32	1 1/4"NPS	Φ30	25.5	Sw46	14	66	358.2
ZLS8516DN40	1 1/2"NPS	Φ38	26	Sw50	16	68	354.6
ZLS8516DN50	2"NPS	Φ49	27	Sw62	17	71	561.9

