

**Stainless Steel Low Pressure Pipe Fittings -
ELBOW 90 DEGREE
DATA SHEET
ZL-S8501 Series**



Description

Brought to you by ZL, a series of stainless steel threaded fittings, suitable for applications requiring a secure and reliable pipe connection. Heavily used within the plumbing industry, water and gas will flow through in a tightly sealed construction. These 90 degree elbow fittings are made from a durable 316 stainless steel to ensure a simple and secure connection for pipe and hose work. All models are highly reliable and excellent quality.

Available in a variety of sizes:

S8501-1/4"F*1/4"F-01
S8501-3/8"F*3/8"F-01
S8501-1/2"F*1/2"F-01
S8501-3/4"F*3/4"F-01
S8501-1"F*1"F-01
S8501-1 1/4"F*1 1/4"F-01
S8501-1 1/2"F*1 1/2"F-01
S8501-2"F*2"F-01

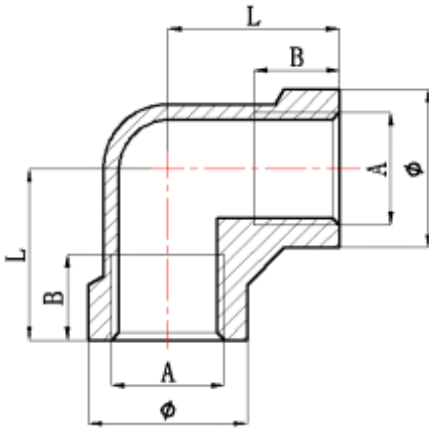
FEATURES

- ∞ 316 Stainless steel - superior corrosion resistance
- ∞ 150lbs fitting
- ∞ BSP female
- ∞ Various sizes available
- ∞ 90 degree angled

General Specifications

Connection 1	1/4 in to 2 in G Female
Connection 2	1/4 in to 2 in G Female
Fitting Type	Elbow
Fitting Direction	90°
Connection Gender 1	Female
Connection Gender 2	Female
Thread Standard 1	G (Parallel)
Thread Standard 2	G
Material	316 Stainless Steel
Application	All throughout the home (bathroom, kitchen etc.) Any building with running water, heating or gas; Sewage and underground networks; Ships and boats; Car engines

Dimensions



Code	A	B	L	Φ	Weight(g)
ZLS8501DN08	G1/4"	11	19	Φ18	28.5
ZLS8501DN10	G3/8"	11.5	23	Φ21.5	39.5
ZLS8501DN15	G1/2"	10.5	27	Φ26.5	61.0
ZLS8501DN20	G3/4"	11.5	32	Φ32	94.5
ZLS8501DN25	G1"	13	37	Φ39.5	158.0
ZLS8501DN32	G1 1/4"	15	43	Φ48.5	229.0
ZLS8501DN40	G1 1/2"	16	48	Φ55	332.0
ZLS8501DN50	G2"	18.5	56	Φ67	484.9