

**Stainless Steel Low Pressure Pipe Fittings -  
EQUAL SOCKET  
DATA SHEET  
ZL-S8503 Series**



## Description

Brought to you by ZL, a series of stainless steel threaded fittings, suitable for applications requiring a secure and reliable pipe connection. Heavily used within the plumbing industry, water and gas will flow through in a tightly sealed construction.

These threaded sockets are made from a durable 316 stainless steel material and are available in various sizes to make sure there's a perfect fit. All models are highly reliable and excellent quality.

### Available in a variety of sizes:

S8503-1/4"F*1/4"F-01
S8503-3/8"F*3/8"F-01
S8503-1/2"F*1/2"F-01
S8503-3/4"F*3/4"F-01
S8503-1"F*1"F-01
S8503-11/4"F*11/4"F-01
S8503-11/2"F*11/2"F-01
S8503-2"F*2"F-01

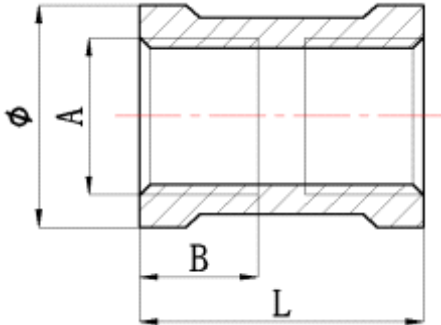
## FEATURES

- ⌘ 316 Stainless steel construction
- ⌘ 150lbs fittings
- ⌘ BSP female connections at both ends
- ⌘ Various sizes available
- ⌘ Chemical Resistance

## General Specifications

Connection 1	1/4 in to 2 in G Female
Connection 2	1/4 in to 2 in G Female
Fitting Direction	Socket
Connection Gender 1	Female
Connection Gender 2	Female
Thread Standard 1	G (Parallel)
Thread Standard 2	G
Material	316 Stainless Steel
Application	All throughout the home (bathroom, kitchen etc.) Any building with running water, heating or gas; Sewage and underground networks; Ships and boats; Car engines

## Dimensions



Code	A	B	L	$\Phi$	Weight(g)
ZLS8503DN08	G1/4"	11	26	$\Phi$ 18	21.5
ZLS8503DN10	G3/8"	11.5	30	$\Phi$ 21.5	28.4
ZLS8503DN15	G1/2"	13.5	35	$\Phi$ 26.5	53.0
ZLS8503DN20	G3/4"	11.5	38	$\Phi$ 32	68.0
ZLS8503DN25	G1"	13	43	$\Phi$ 39.5	110.4
ZLS8503DN32	G1 1/4"	15	49	$\Phi$ 48.5	167.0
ZLS8503DN40	G1 1/2"	16	52	$\Phi$ 55	206.1
ZLS8503DN50	G2"	18.5	63	$\Phi$ 67	239.0