

**Stainless Steel Low Pressure Pipe Fittings -
BARREL NIPPLE
DATA SHEET
ZL-S8505 Series**



Description

Brought to you by ZL, a series of stainless steel threaded fittings, suitable for applications requiring a secure and reliable pipe connection. Heavily used within the plumbing industry, water and gas will flow through in a tightly sealed construction.

These fittings are made from a durable 316 stainless steel and incorporate a barrel nipple to ensure a simple and secure connection for pipe and hose work. All models are highly reliable and excellent quality.

Available in a variety of sizes:

S8505-1/4"M*1/4"M-01
S8505-3/8"M*3/8"M-01
S8505-1/2"M*1/2"M-01
S8505-3/4"M*3/4"M-01
S8505-1"M*1"M-01
S8505-1 1/4"M*1 1/4"M
S8505-1 1/2"M*1 1/2"M
S8505-2"M*2"M-01

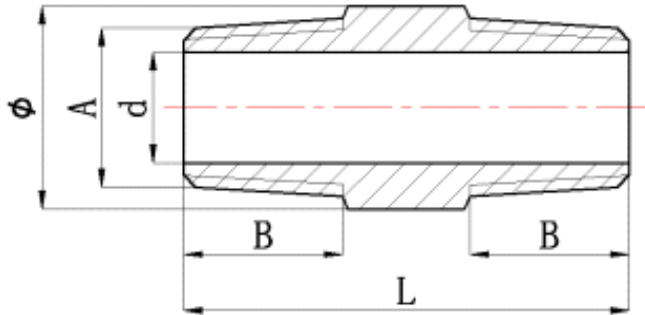
FEATURES

- ∞ 316 Stainless Steel
- ∞ 150lbs fitting
- ∞ With BSPT tapered screw end
- ∞ Barrel Nipple is made from S/40 pipe
- ∞ Various sizes available

General Specifications

Connection 1	1/4 in to 2 in R Male
Connection 2	1/4 in to 2 in R Male
Shape	Circular
Fitting Type	Barrel Nipple
Connection Gender 1	Male
Connection Gender 2	Male
Thread Standard 1	R (Taper)
Thread Standard 2	R
Material	316 Stainless Steel
Application	All throughout the home (bathroom, kitchen etc.)Any building with running water, heating or gas; Sewage and underground networks; Ships and boats; Car engines

Dimensions



Code	A	B	L	d	Φ	Weight(g)
ZLS8505DN08	R1/4"	12.5	38	$\Phi 9$	$\Phi 14$	22.0
ZLS8505DN10	R3/8"	14.5	38	$\Phi 12$	$\Phi 17$	32.0
ZLS8505DN15	R1/2"	16	42	$\Phi 16.3$	$\Phi 21.3$	39.2
ZLS8505DN20	R3/4"	17	45	$\Phi 21.7$	$\Phi 26.7$	76.0
ZLS8505DN25	R1"	19.5	50	$\Phi 27.4$	$\Phi 33.4$	90.0
ZLS8505DN32	R1 1/4"	20.5	56	$\Phi 36$	$\Phi 42$	115.6
ZLS8505DN40	R1 1/2"	21.5	58	$\Phi 42$	$\Phi 48$	144.0
ZLS8505DN50	R2"	24	64	$\Phi 53$	$\Phi 60$	238.2