



调节型
Modulating type



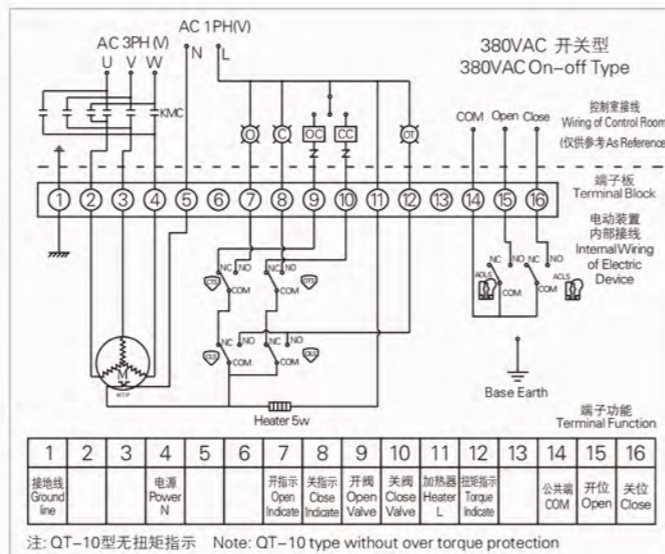
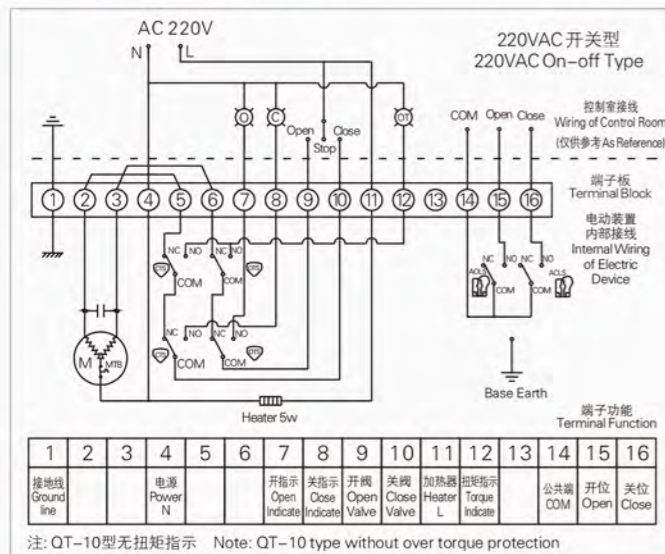
开关型
On-off Type



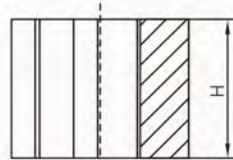
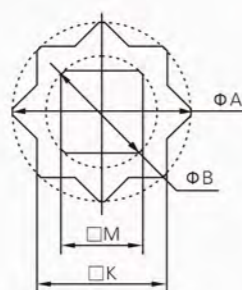
吉迈科技
JIMAI AUTO-TECH

QT Electric Actuator
QT电动执行器

◆ 接线图 Wiring Diagram



ISO5211 连接盘
ISO5211 Actuator Mounting



◆ 连接套规格 Adapter specifications

Type	K	A	M	ΦB	H
11M7	11	15	7	10	12
11M9	11	15	9	12	12
14M9	14	19	9	12	16
14M11	14	19	11	14.8	16
17M11	17	23	11	14.8	19
17M14	17	23	14	19	19
19M11	19	26	11	14.8	21
19M14	19	26	14	19	21
19M17	19	26	17	23	21
22M14	22	30	14	19	24
22M17	22	30	17	23	24
22M19	22	30	19	26	24
27M17	27	37	17	23	29
27M19	27	37	19	26	29
27M22	27	37	22	30.3	29
36M19	36	49	19	26	38
36M22	36	49	22	30.3	38
36M27	36	49	27	37.3	38
46M36	46	60	36	60	48



浙江吉迈自动化科技有限公司
ZHEJIANG JIMAI AUTO-TECH
CO., LTD

www.jimaiv.com



ZHEJIANG JIMAI AUTO-TECH CO.,LTD

ADD: He'er Industrial Area Oubei Town, Yongjia County, Wenzhou city, Zhejiang Province, China.

TEL: +86-577-66998661 Phone: 15058706388

Email: sales03@jimaiv.com

P.C: 325105



QT ELECTRIC ACTUATOR

产品特点 Features

- 设计精巧、性能优越、重量轻、输出扭矩大。
- 外壳内外部经硬氧处理，外部采用环氧树脂+粉末喷涂处理，防腐性能好。
- 产品防护等级达IP67。
- 输出端连接尺寸符合ISO5211国际标准。
- 可换连接轴套，易于加工和安装。
- 双蜗轮蜗杆结构，具有自锁功能；并具有外部可调机械限位。
- 通过手柄，可方便切换电动/手动操作模式，通电后自动复位至电控模式。
- 内置扭矩开关，对电动执行器进行过载保护。并内置热保护器，对电机进行双重保护。
- 大视窗连续阀位指示，更好的观看阀位。
- 多种现场控制单元，根据用户需要提供最佳的性能。
- 可选智能控制单元。
- Exquisite design, excellent performance, light weight and big output torque.
- The inside and outside of closure is treated by hard oxygen, while epoxy resin + powder spraying are adopted for external treatment, which posses good antiseptic performance.
- Protective grade of product is upward of IP67.
- Connection dimension of output end is in accordance with the National Standard ISO5211.
- Connection shaft sleeve can be replaced, and easily processed and installed.
- Double worm wheels structure, which has self-locking function, and is of external adjustable mechanical limit.
- Power-driven/manual operation mode can be changed easily through hand shank, then automatic reset to electronic control after power on.
- Built-in torque switch, and carry out overload protection on electric actuator. Moreover, it embedded thermal protector to carry out dual-protection on electrical machine.
- Indicate the valve position continuously by big window for better viewing.
- Multiple filed control unit, provide the best performance according to the requirement of users.
- Intelligent control unit could be selected.

标准规格 Standard Specification

外壳 Shell	防水级别 Waterproof level IP67, NEMA4 and 6	
电机电源 Motor power	标准: 220V AC单相 可选: 110V AC单相, 380/440V AC 三相, 50/60Hz, ±10% 24V DC / 110V DC / 220V DC	Standard: 220V AC Single-phase Optional: 110V AC Single-phase, 380/440V AC Three-phase, 50/60Hz, ±10% 24V DC / 110V DC / 220V DC
电机 Motor	鼠笼式异步电机 Squirrel-cage asynchronous motor	
限位开关 Limit switch	开/关, 各1个 SPDT, 250VAC10A Open/close, each 1 SPDT, 250VAC10A	
辅助限位开关 Auxiliary limit switch	开/关, 各1个 SPDT, 250VAC10A Open/close, each 1 SPDT, 250VAC10A	
行程 Stroke	90° , ±10° (120° , 180° , 270° Optional可选)	
失速防护/操作温度 Stall protection / operating temperature	内置过热保护, 开115°C ± 5°C/关97°C ± 5°C Inside overheating protection, open 115°C ± 5°C/close 97°C ± 5°C	
指示器 Indicator	连续的位置指示刻度 Continuous position indicator	
手动操作 Manual operate	机械手柄 (可选装手轮) Mechanical handle (Handwheel is optional)	
自锁装置 Self-locking device	蜗轮, 蜗杆机构提供自锁 Provide self-locking by worm and wormgear	
机械限位 Mechanical limit	2个外部调整螺栓 2 Pieces of external adjustable bolt	
干燥器 Space heater	7-10W(110/220V AC)	
接线孔 Conduit entry	2个PE3/4" 2 Pieces of PE3/4"	
环境温度 Ambient temperature	-20°C ~ +70°C	
润滑 Lubrication	铝基润滑脂(EP型) Aluminum base grease(EP type)	
材料 Material	钢, 铝合金, 铝青铜, 聚碳酸酯 Steel, aluminum alloy, aluminum bronze, polycarbonate	
环境湿度 Ambient humidity	最大90% RH Max 90% RH	非凝结 Non condensation
抗震性能 Anti-vibration performance	XYZ10g, 0.2~34Hz, 30分钟 XYZ10g, 0.2~34Hz, 30 Minutes	
外涂层 External coating	干粉, 环氧聚酯 Dry powder, epoxy polyester	

可选规格 Optional Specifications

编号 No	可选配置 Optional configuration	备注 Remarks
1	防爆执行器(Exd II BT4, Exd II CT6)	Explosion-proof actuator(Exd II BT4, Exd II CT6)
2	防水执行器(IP68, 10M, 250HR)	Waterproof actuator(IP68, 10M, 250HR)
3	电位计(1K-10K)	Potentiometer(1K-10K)
4	比例控制单元(输入, 输出信号)4-20mA DC/1-5V/1-10V Proportional control unit(Input, output signal)4-20mA DC/1-5V/1-10V)	QT系列 QT Series
5	现场控制单元(就地控制开/停/关选择开关, 就地/远程切换)	QT系列 QT Series
6	电流位置传感器(输出4-20mA DC)	QT系列 QT Series
7	断电后, 电动阀自动开或关控制柜	QT系列 QT Series
8	耐高温执行器(-10°C ~ +100°C)	QT系列 QT Series
9	耐低温执行器(-40°C ~ +70°C)	QT系列 QT Series
10	低速执行器 Low speed actuator	QT系列 QT Series

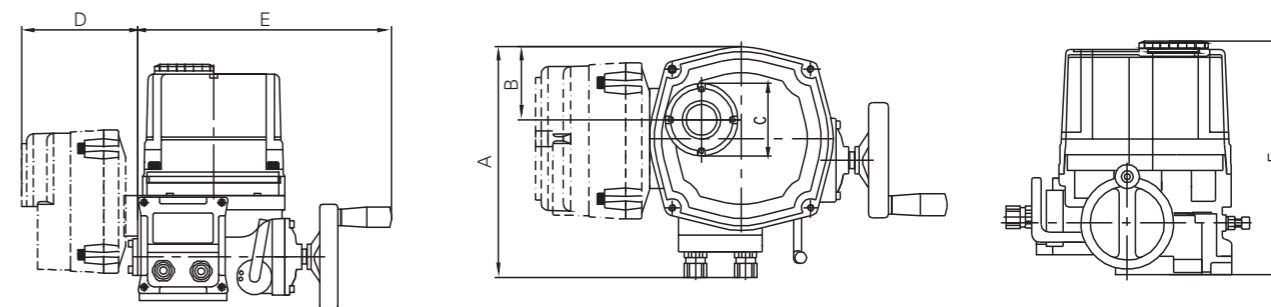
JIMAI AUTO-TECH



技术参数及规格 Technical Data and Specifications

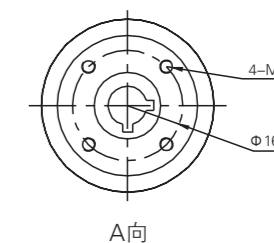
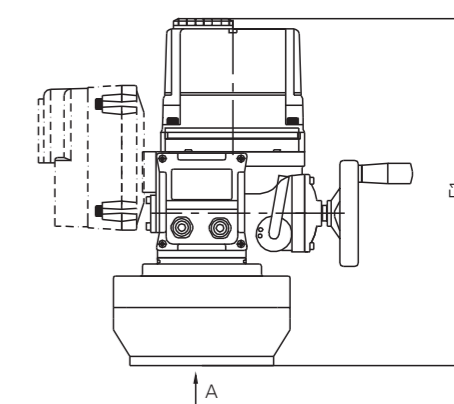
型号 Model	最大输出扭矩 Max output torque	90° 动作时间 60/50Hz 90° operating time 60/50Hz	电机F级 F-class motor	额定电流(A) 60/50HZ Rated current(A) 60/50HZ		手轮转数 Handwheel rotation	重量 Weight
				单相 Single-phase	三相 Three-phase		
QT-010	100	18/22	25	0.38	0.21	9	12
QT-015	150	18/22	40	0.5	0.25	10	13
QT-020	200	20/24	40	0.5	0.25	11	16.8
QT-050	500	25/29	120	0.98	0.52	13.5	21
QT-100	1000	26/33	200	1.74	0.76	16.5	30
QT-200	2000	85/104	200	1.74	0.76	49.5	60

外型 and 阀门连接尺寸 Appearance & Connection Dimension



QT-200型 QT-200Type

Model	A	B	C	D	E	F	F1	Adapler	
								a	deep
QT-10	223	62	69	136.5	300	265	/	11x11 14x14	35
QT-15	223	62	69	136.5	300	265	/	11x11 14x14	35
QT-20	251	67	101.7	140	329	272.5	/	14x14 17x17 22x22	45
QT-50	275	67	101.7	140	374.5	313	/	14x14 17x17 22x22	50
QT-100	332	80	101.7	140	415	352	/	22x22 27x27	55
QT-200	332	80	101.7	140	415	352	503	36x36	60



连接法兰尺寸 Connection Flange Dimension

