



上海盈创纺织服装器材有限公司

营业部：无锡市清扬路7号联通大厦1203A室
电话：0086-510-85015496 82736809
传真：0086-510-85015496



SHANGHAI INCHUN SPINNING&WEAVING CLOTHING EQUIPMENT CO.,LTD
ADD: ROOM 1203A LIANTONG BUILDING(7# QINGYANG ROAD) WUXI CITY
TEL: 0086-510-85015496 82736809
FAX: 0086-510-85015496
E-MAIL: shanghaiinchun@163.com
www.inchun-lauki.com

INTELLIGENT WASHING
EQUIPMENT MANUFACTURER
智能洗涤设备制造商



了解我们

Product Introduction

智能 & 坚固 & 抗偏振

Intelligent & Sturdy & Anti eccentric vibration

作为具有23年制造历史的工厂，对行业具备充分的认知。对其他品牌进行了深刻的研究并结合中国的制造条件，生产出具有高度智能、极其坚固耐用、具有超强的抗偏振性的商用洗涤设备。同时也能根据不同的地域客户要求个性化定制。

As a factory with a manufacturing history of 23 years, we have a full understanding of the industry. We have conducted in-depth research on other brands and combined them with China's manufacturing conditions to produce commercial washing equipment that is highly intelligent, extremely durable, and has strong resistance to eccentric vibrations. At the same time, it can also provide personalized customization for customers in different regions.

超高性价比，一定是你不二的选择

Ultra high cost-effectiveness, definitely your best choice.



01

我们的优势
Our Advantages



02

高速智能洗衣机
High speed intelligent washing machine



03

快速智能洗衣机
Fast intelligent washing machine



04

烘干机
Dryer



- 工业标准的容积比1:10全不锈钢滚筒,采用四拨打筋结构,坚固耐用。
- 同时提升洗涤摩擦系数30%,洗涤摔打有效性提升30%。
- 由于采用了配重设计,洗涤量只有额定参数的1/10,或者床单、毛毯等不易均布的也不会造成高脱时的偏振。
- Industrial standard volume ratio 1:10 all stainless steel drum with four ribbed structure, sturdy and durable.
- Simultaneously increase the washing friction coefficient by 30%, and increase the effectiveness of washing and wrestling by 30%.
- Due to the use of counterweight design, the washing capacity is only 1/10 of the rated parameter, or the eccentric vibration during high speed dehydration will not be caused by uneven distribution of bed sheets, blankets, etc.



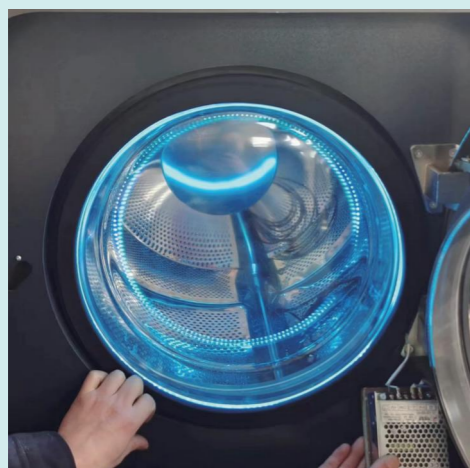
- 世界知名品牌防水轴承,水封使用了3组,5年内不用更换
- 大直径传动轴,大负荷超载也不会垂头
- World renowned brand waterproof bearings, with 3 sets of water seals used and no need to replace within 5 years.
- Large diameter transmission shaft, inner barrel will not drop even with heavy overload.



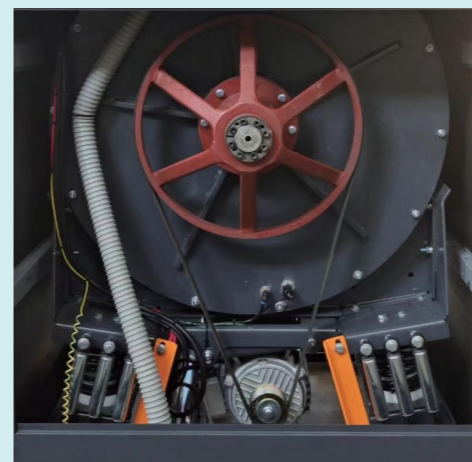
- 全系列产品均采用不锈钢抛光加工的门圈,美观坚固
- 标配意大利产玻璃视窗,可达到严苛的美国标准
- All series of products are equipped with stainless steel polished door rings, which are aesthetically pleasing and sturdy.
- Standard Italian made glass windows can meet strict American standards.



- 球墨铸铁皮带轮,配同步多楔带,是三角带寿命的5倍,传动均衡
- 全不锈钢油磨拉丝外壳,美观耐用
- Nodular cast iron pulley with synchronous multi wedge belt, 5 times the lifespan of triangular belt, and balanced transmission.
- All stainless steel oil grinding and drawing shell, beautiful and durable.



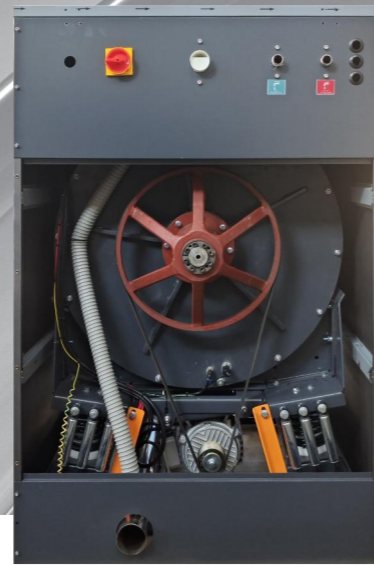
- 标配冰蓝LED灯,具有消毒及观察洗涤状态的功能
- 410MM大门圈设计方便衣物的投取
- Standard ice blue LED light with disinfection and observation of washing status.
- 410MM big door ring design, which is convenient to take clothes.



- 皮带速比5.8:1扭矩强劲,可按客户要求轻易设定摇摆洗或湿洗,无需增加成本。
- The belt speed ratio is 5.8:1 with strong torque, which can be easily set to swing or wet wash according to customer requirements without increasing costs

高速智能洗衣机

High speed intelligent washing machine



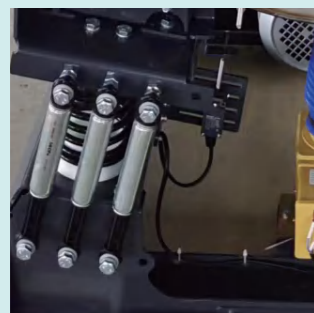
整机型号 Model	HA-15	HA-20	HA-25
外形尺寸 Overall dimension	870x980x1360	910x980x1420	910x1130x14200
内筒尺寸 Inner barrel dimension	Φ630 H510	Φ700 H520	Φ700 H650
额定电源 Rated power supply	220V1P	380V3P	380V3P
使用水压 Use water pressure	0.02MPa-1MPa	0.02MPa-1MPa	0.02MPa-1MPa
整机重量 Machine weight	450kg	520kg	590kg
排水方式 Drainage mode	下排水 Drain down	下排水 Drain down	下排水 Drain down
脱水方式 Dewatering mode	离心脱水 Centrifugal dewatering	离心脱水 Centrifugal dewatering	离心脱水 Centrifugal dewatering
洗涤容量 Washing capacity	15KG	20KG	25KG
脱水转速 Dehydration speed	800~900r/min	750~860r/min	750~860r/min
洗涤转速 Washing speed	50r/min	50r/min	50r/min
均布转速 Equispaced speed	80r/min	80r/min	80r/min
电机功率 Motor power	1.5kw	2.2kw	3kw
变频器功率 Inverter power	1.5kw	2.2kw	3kw
电加热功率 Electric heating power	8kw	12kw	12kw
用水量(升/工作周期) Water consumption(L/work cycle)	约80 about 80	约95 about 95	约110 about 110

优势说明

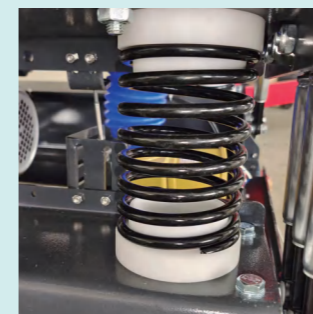
Advantage description



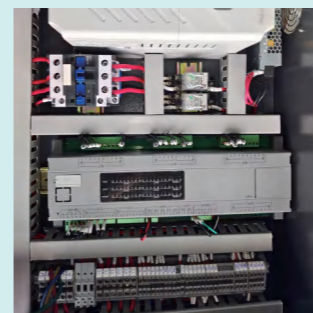
- 全系列采用高清7英寸触摸屏,可设置工作程序高达30种以上,亦可根据客户要求个性化设置洗涤程序,例如湿洗功能、摇摆洗功能
- The entire series adopts a high-definition 7-inch touch screen, which can set up to 30 or more working programs. The washing program can also be personalized according to customer requirements, such as wet washing function and swing washing function.



- 带有优良的避震结构,可在大多数场合不需要固定的情况下使用,使用场景丰富。
- With excellent shock absorption structure, it can be used in most situations without the need for fixation, and has rich application scenarios.



- 底盘部分采用线径10mm优质进口材质弹簧,配以高耐磨高强度的塑料消声限位块以及高达经过千次以上测试计算的配重钢。经过精心调校,配以德国进口摩擦式阻尼器,高脱水时柔顺、安静、稳定,无需进行固定,极其坚固耐用。
- The chassis part adopts high-quality imported springs with a wire diameter of 10mm, matched with high wear-resistant and high-strength plastic noise reduction limit blocks, as well as counterweight steel that has been tested and calculated over a thousand times. After careful adjustment and equipped with friction dampers imported from Germany, it is flexible, quiet, and stable during high-speed dehydration, without the need for fixation, making it extremely sturdy and durable.



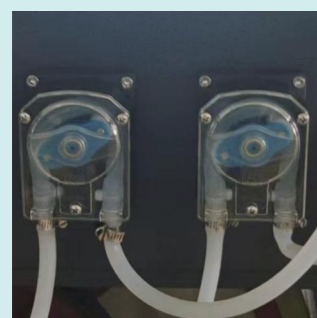
- 德国电工标准电器接线
- German electrician standard electrical wiring

快速智能洗衣机 Fast intelligent washing machine

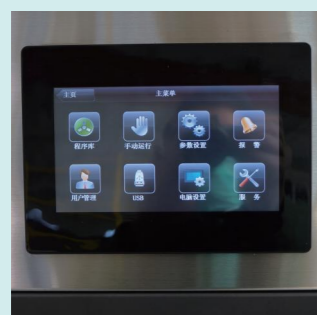


整机型号 Model	WA-13	WA-15	WA-20	WA-25
外形尺寸 Overall dimension	800x820x1290	800x920x1290	870x920x1360	870x1070x1360
内筒尺寸 Inner barrel dimension	Φ630 H415	Φ630 H510	Φ700 H520	Φ700 H660
额定电源 Rated power supply	380V/220V	380V/220V	380V/220V	380V/220V
使用水压 Use water pressure	0.02MPa-1MPa	0.02MPa-1MPa	0.02MPa-1MPa	0.02MPa-1MPa
整机重量 Machine weight	370kg	380kg	415kg	435kg
排水方式 Drainage mode	下排水 Drain down	下排水 Drain down	下排水 Drain down	下排水 Drain down
脱水方式 Dewatering mode	离心脱水 Centrifugal dewatering	离心脱水 Centrifugal dewatering	离心脱水 Centrifugal dewatering	离心脱水 Centrifugal dewatering
洗涤容量 Washing capacity	13KG	15KG	20KG	25KG
脱水转速 Dehydration speed	600r/min	600r/min	600r/min	550r/min
洗涤转速 Washing speed	50r/min	50r/min	50r/min	50r/min
均布转速 Equispaced speed	80r/min	80r/min	80r/min	80r/min
电机功率 Motor power	1.5kw	1.5kw	2.2kw	3kw
变频器功率 Inverter power	1.5kw	1.5kw	2.2kw	3kw
电加热功率 Electric heating power	12kw	12kw	12kw	12kw
用水量(升/工作周期) Water consumption(L/work cycle)	约70 about 70	约80 about 80	约95 about 95	约110 about 110

优势说明 Advantage description



- 可按要求配装蠕动泵, 进行洗涤化料的自动加注。
- Peristaltic pumps can be installed as required for automatic filling of washing chemicals.



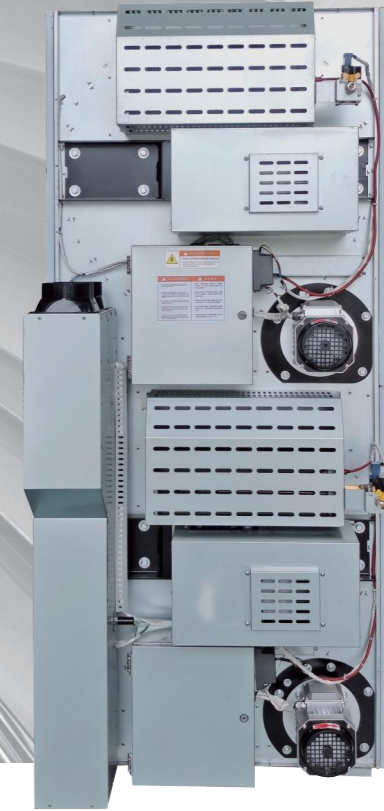
- 自助式洗脱机可选择触屏式、按键式PLC控制
- Self service washing machine with optional touch screen or button PLC control.



- 固定式洗脱机底座采用5mm优质钢板焊接而成, 使用特殊的抱箍收紧装置, 使机架整体具备远超其他厂家的坚固性。
- The fixed washing machine base is welded with 5mm high-quality steel plate and uses a special clamp tightening device, making the overall durability of the rack far superior to other manufacturers.

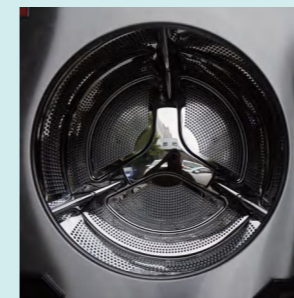


- 德国电工标准电器接线
- German electrician standard electrical wiring



整机型号 Model	HT-15	HG-25	HT-2x15
额定容量 Rated Capacity	16kg	28kg	2x16kg
直径 Diameter	770mm	900mm	770mm
深度 Depth	670mm	780mm	670mm
加热方式 Heating form	电、液化气、天然气 Electricity, liquefied gas, natural gas	电、液化气、天然气 Electricity, liquefied gas, natural gas	电、液化气、天然气 Electricity, liquefied gas, natural gas
燃气压力 Steam pressure	5~10Kpa	5~10Kpa	5~10Kpa
燃气管尺寸 Steam inlet	DN15mm	DN15mm	DN15mm
液化气耗量 Consumption LPG	1~1.3kg	1.8~2.5kg	2~2.6kg
天然气耗量 Consumption LNG	1.0~1.5m³	1.8~2.7m³	2~3m³
主电机功率 Motor power	0.37kw	0.75kw	0.37kw
风机功率 Fan motor power	0.55kw	0.55kw	0.55kw
加热管功率 Heater power	15kw	22.5kw	2*15kw
净重 Net weight	180kg	280kg	280kg
外形尺寸 Dimension	860*1030*1620mm	970*1200*1750mm	860*1030*2060mm

优势说明
Advantage description



- 采用细密小孔的全不锈钢镜面抛光滚筒，进风高效，呵护娇贵面料。
- Using a fully stainless mirror surface polishing drum with fine and small holes, efficient air intake and care for delicate fabrics.



- 自助式洗脱机可选择触屏式、按键式PLC控制
- Self service washing machine with optional touch screen or button PLC control.