

Madamcenter

Hair
Salon
Furniture

Founded in 2008, MuChi Furniture is a modern, professional furniture enterprise, integrating furniture research and development, production, sales, and service. With over a decade of rich experience, strong research and development capabilities, top-notch design standards, unique craftsmanship, and a rigorous and pragmatic work style, the company delivers a fresh furniture concept to the world, leading the way in fashionable lifestyle concepts. The company owns three major sub-brand series: Muchi, Madamcenter, and Turri. Currently, with a 30,000 square meter factory and a 3,000 square meter salon furniture showroom, its products are exported to more than 100 countries and regions, including Europe, America, Africa, and Asia, enjoying high popularity and reputation among a wide range of customers.

BARBER CHAIR

EMPEROR	4
CADEIRA	16
CAPONE	22
GENT	28
GABBIANO	34
HARRISON	40
CLAUDIUS	46
KIRK	52
MIKADO	58
PRINCETON	64



EMPEROR

Crafted for professionals seeking excellence, this barber chair epitomizes quality and comfort. Its distinctive design is accentuated by chrome handles, levers, and a sturdy metal footrest with legs. The robust, uniquely contoured frame, coupled with synthetic leather upholstery, ensures unparalleled comfort and effortless maintenance. With a hydraulic pump for height adjustment and customizable features like the headrest, backrest, and footrest, each client enjoys personalized comfort. The chair's reclining capability, nearly horizontal, prioritizes client relaxation without compromising the efficiency of the barber's work.







Crescent



Electric Barber Chair





Crescent



Electric Barber Chair



CADEIRA

In a timeless classic design, this barber chair boasts dual hand levers on either side, catering to both right and left-handed users. Engineered for utmost comfort, it features resilient cushions and ergonomic contours. Crafted from premium materials, it exudes an air of sophistication while ensuring a soothing experience for clients during haircuts. Its versatile elegance makes it suitable for various settings including barbershops, spa salons, and home studios of diverse aesthetics.

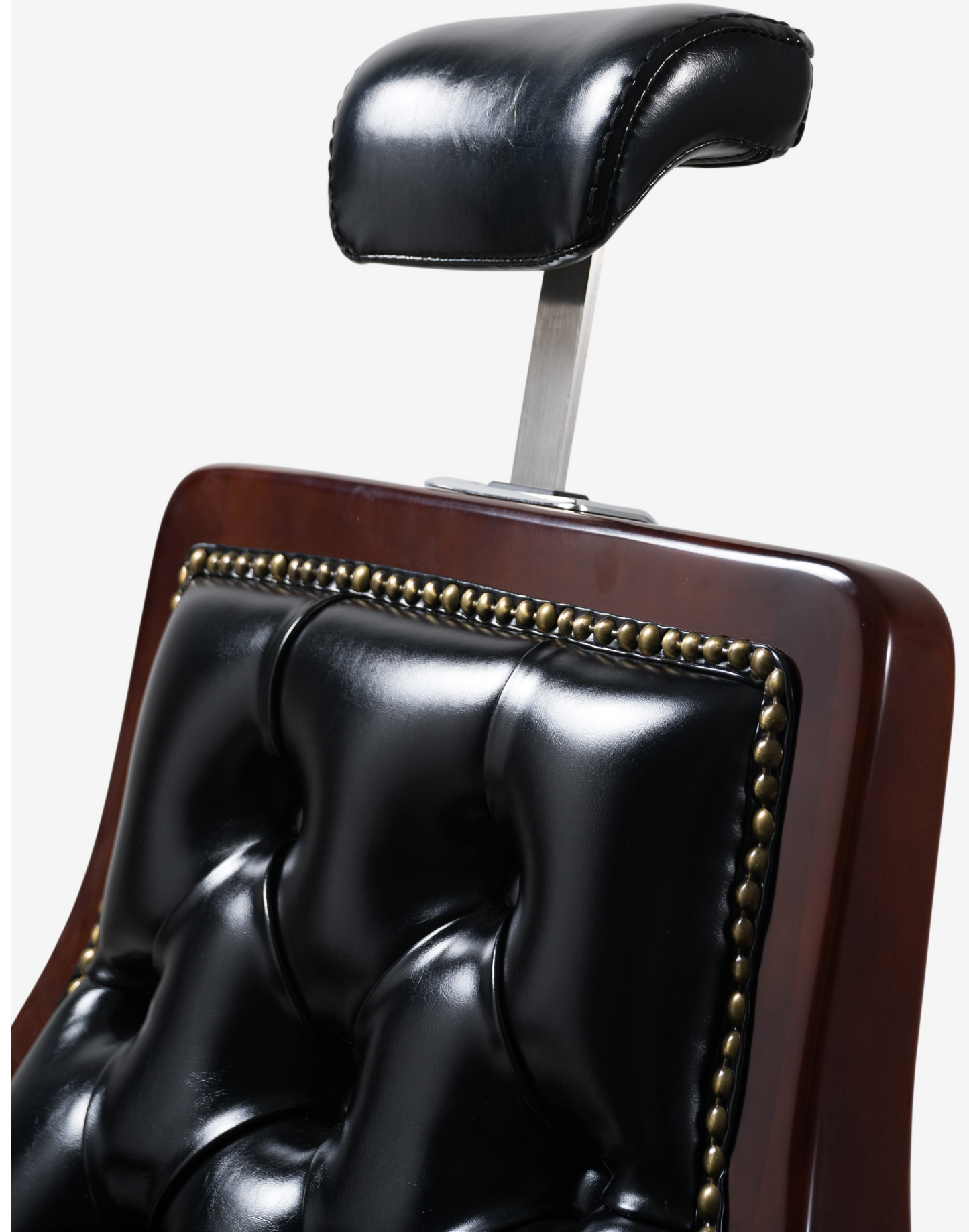






CAPONE

This chair masterfully combines retro and modern design elements to deliver supreme comfort and functionality. The backrest and seat cushion are crafted from high-quality dark leather that is not only durable but also easy to clean. The diamond stitching on the leather adds a touch of vintage charm. The sides and armrests feature deep red wooden accents, paired with a silver metal frame, showcasing an elegant craftsmanship.







GENT

This professional barber chair features a modern and sophisticated design. The seat and backrest are made of high-quality PVC leather, which not only looks stylish but is also easy to clean and maintain. The structural parts of the barber chair, including the armrests and footrest, are made of polished chrome metal, enhancing the overall durability and stability. Additionally, the chair is equipped with a circular metal base at the bottom, ensuring smooth and safe rotation.







GABBIANO

The minimalist and stylish curves of the salon bed, along with its open base design and unique supporting legs, make a striking statement. The entire bed is covered with undulating foam-filled grooves. You can utilize the open legs as storage space or let them stand out as a design highlight in your salon.





Gabbiano



Barber Chair



HARRISON

Introduce the distinctive vintage style of the Harrison Barber Chair into your shop. Its 2.5-inch thick seat cushion rests on a 3-inch aluminum alloy frame base, creating a unique aesthetic. The deep crimson color adds a touch of vibrancy to your barbershop or salon, enhancing its individuality. Designed with plush armrests, a towel rack, and lumbar support, the chair provides clients with unparalleled comfort. Additionally, the adjustable headrest can be tailored to accommodate clients of varying heights, offering them personalized service.





Harrison



Barber Chair



CLAUDIUS

Offering Maximum Comfort for All. This comfortable armchair is outfitted with an array of adjustable features, ensuring optimal comfort for both clients and barbers alike. Easily tailor the chair's height, backrest inclination, footrest, and bedrest length to create a welcoming environment for salon visitors. Embracing Vintage Interior Design. Recognized for its comfort and stylish design, this chair seamlessly complements vintage interior settings. With its harmonious fusion of comfort and sophistication, it enhances the ambiance of your salon with a touch of elegance.





Claudius



Barber Chair



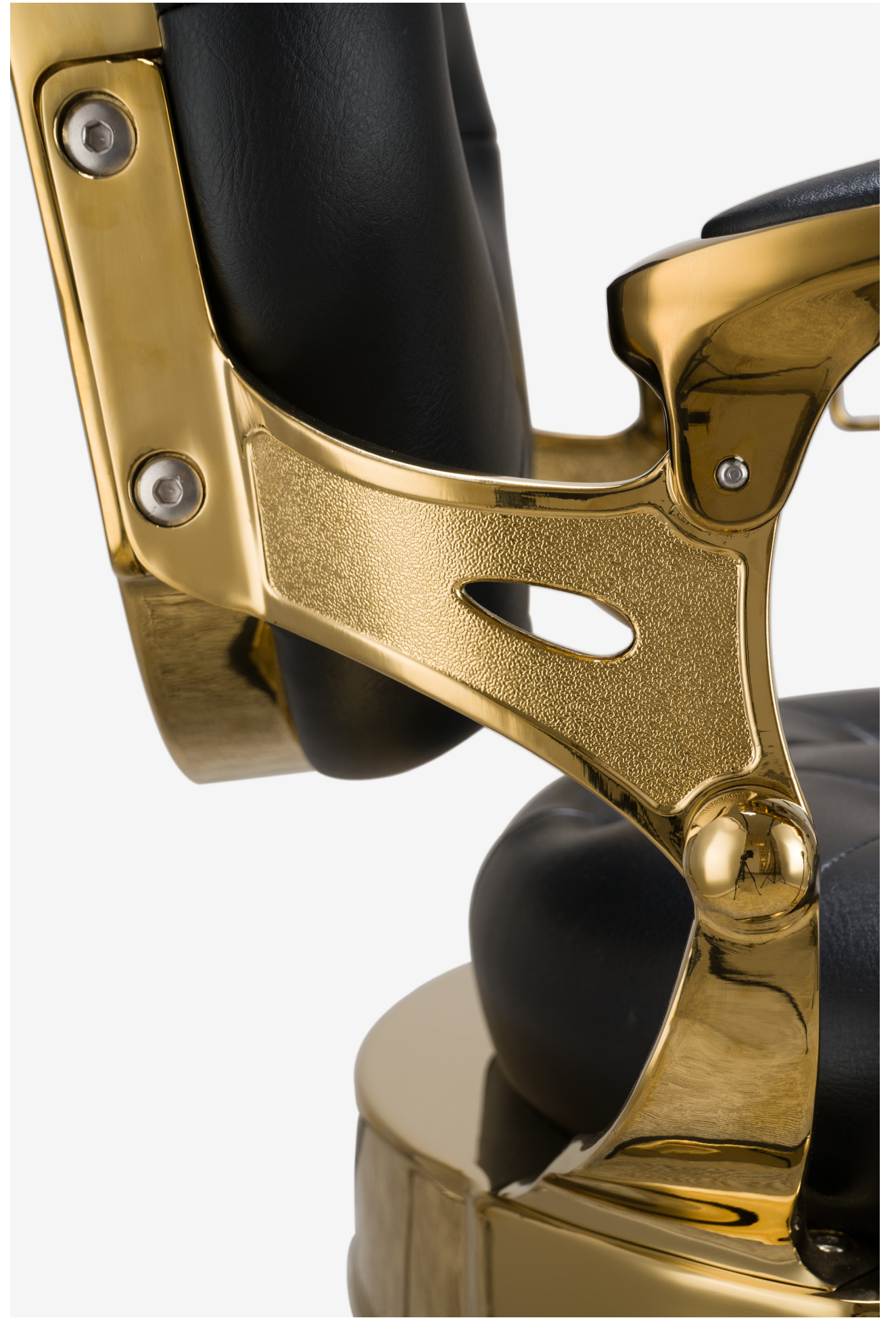
KIRK

The Kirk chair combines ergonomic design with durability and versatility, showcasing a robust and multifunctional vintage style with metallic accents. Despite being made with the most modern materials, the unique style of the antique Kirk barber chair is unmistakable. In short, it will bring elegance and a unique classic style to any barbershop. Made with high-quality fire-retardant PVC poly-leather, die-cast aluminum frame, and matt metallic finish. The chair is very lightweight and features rapid recovery high-density foam. It has a chrome-plated metal protective ring fixed to the base, reversible and tilting aluminum footrest, adjustable headrest, and towel holder.





Kirk



Barber Chair



MIKADO

Blending contemporary elegance with timeless design, we present our latest Barber Chair. Its sleek, modern silhouette and pristine white trim infuse your barbershop with a touch of sophistication and style. Our meticulous attention to detail, highlighted by fashionable rivet accents, not only enhances the chair's visual appeal but also showcases our craftsmanship and artistry. The combination of premium leather and carefully placed rivets creates a modern yet classic ambiance, offering a seamless fusion of comfort and style in your barbershop.





Mikado



Barber Chair



PRINCETON

This beauty bed integrates advanced technology into its design, ensuring precise adjustment functionality while maintaining a smooth and refined appearance, with smooth and silent operation. Equipped with a convenient handheld remote control and integrated bed controls, it offers unparalleled ease of use. Additionally, the leg support can be manually adjusted, further enhancing convenience. Beyond its outstanding features, this multifunctional electric beauty massage bed also offers personalized options, allowing you to freely choose from a wide range of color options according to your preferences, ensuring coordination with the aesthetic style of your spa center and creating a cohesive and captivating atmosphere that perfectly complements your brand and style. Experience this exceptional beauty bed and elevate your spa experience.





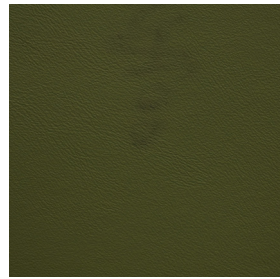
Princeton



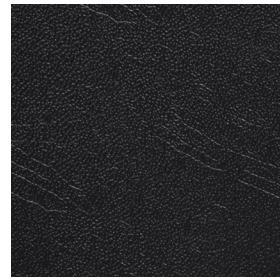
Barber Chair



LEATHER



1108-45



A6



A9



Y0A-15



YA84



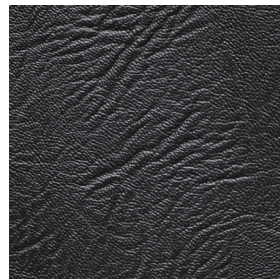
YA91



YA92



YA96



YA02



YA09



YA25



YA28



YA97



YA99



YA100



YA101



YA64



YA66



YA68



YA73



YA102



YA103



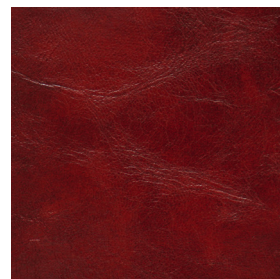
YD29



YD44



YA74



YA75



YA76



YA79



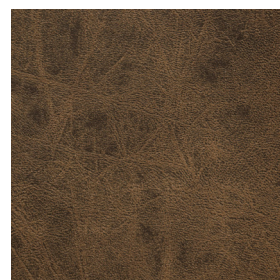
YD46



2135-868



YA80



YA81



YA82



YA83

Madamcenter

Contact information

Email: madamcenter@163.com
Telephone: 0757-2363-1538
Whatapp: +86137 0265 4658

Follow us on:



Headquarter showroom

RM409,Block E LeLong International Creative Park, LongJiang, ShunDe District,Foshan city,GuangDong,China

