



XAVIER

sofa

Upholstered leather or fabric sofa, with platform base and backrest and trapezoidal upholstered armrests. Inner shell in solid wood and poplar and beech plywood. Seat cushions in polyurethane, memory foam® and feather. Back cushions with “chevron” processing in polyurethane and feather. Also available with armrest and backrest in the “board” version in wood upholstered in leather, fabric or woven leather; structural and decorative elements in solid satin brass with engraved plaques with Visionnaire logo. Backrest cushions in different sizes in polyurethane and feather. The side “board” elements are also available with optional “extension” platform under the armrest of +40 cm.



DIMENSIONS
2480*1160*H540
2780*1160*H540



DIMENSIONS
2000*900*H850

MILLER

sofa



Sofa upholstered in fabric Lawrence 24313/17 silver. Curved back cushion upholstered in fabric Lawrence 24313/16 Beola with cannette quilting. Loose cushions 40x40 cm in fabric Lawrence 24313/17 Siver. Steel profile with polished gold-lacquered finish.

MILLER

sofa



DIMENSIONS
2760*1050*H850
2960*1050*H850

Sofa upholstered in fabric Vegas 24316/16 Platino. Back cushions upholstered in velvet Vermeer 24175/17 Ardesia with cannetté quilting. Loose cushions 35x35 cm in velvet Vermeer 24175/111 Peltro. Steel profile with satinized black nickel lacquered finish.

MEMPHIS

sofa



DIMENSIONS
2980*1010*H720



DIMENSIONS
3000*950*H780
2500*950*H780
2300*950*H780
2050*950*H780



BASTIAN DUAL

sofa





DONOVAN ROLL

sofa



DIMENSIONS
2820*1100*H800
3020*1100*H800



BABYLON RACK

modular sofa



DIMENSIONS
2920*1110*H630
2670*1110*H630
2420*1110*H630
2170*1110*H630
1110*1760*H630



RHAPSODY

sofa

DIMENSIONS
2880*1000*H870



MILLER

modular sofa



DIMENSIONS

单扶手双位: 1480*1050*H850

转角位: 1380*1050*H850

贵妃位: 1080*1180*H850

Sofa upholstered in leather Chamolè 24331/01 Avorio. Back cushions upholstered in fabric Faber 24229/35 with canneté quilting. Loose cushions 35x35 cm in velvet Vermeer 24175/17 Ardesia and 40x40 cm in fabric Orangery 24317/685 Cielo-Sabbia. Steel profile with satinized black nickel lacquered finish.



DIMENSIONS
3040*4050*H800

DONOVANSQUARE

modular sofa



Upholstery in fabric Galizia 24321/18 Cobalto. Shaped base and armrest profiles in steel with champagne-lacquered polished finish. Loose cushions 35x35 cm in Orangeria 24317/685 Cielo-Sabbia.



DIMENSIONS
2900*980*H780



DIMENSIONS
1100*980*H780

CA' FOSCARI

sofa





PAVONE

throne

DIMENSIONS
2630*1040*H1600

Peacock is an ambitious project which combines a fluid and organic design with complex technical elements, such as the petals-shaped elements designing a circular "corolla" shape around the back and armrests, in cast brass, shaped and polished by hand. Afterwards, the brass elements are chromed, then lacquered in the metal finishes included in Visionnaire selection (i.e. gold, sienna, black nickel, etc). The semicircle seat structure is upholstered in leather and fabric, and the back cushions are padded one by one.

SONTAG

armchair

"Diamond" shaped structure in solid wood and plywood, seat with spring system with straps and padding in polyurethane, Memory Foam® and acrylic fibre. Internal parts of the back in polyurethane and acrylic fibres padded individually. Multi-faceted base in polished stainless steel available in the metal finishing selection.



DIMENSIONS
810*830*H860



DIMENSIONS
890*800*H670

PETRA

armchair



Armchair in leather and fabric. External structure in wood equipped with elastic-belt spring system. Vertical structural elements in stainless steel on the back and armrests. External upholstery with mosaic pattern and piping in Soft leather.



DIMENSIONS
940*850*H710



BLUEMINE

armchair



DIMENSIONS
870*930*H740

IMAGINE

berrgere

Bergère upholstered in Nabuk Libeccio 24330/3455 boro. Legs in shiny black lacquered wood with shiny gold- lacquered metal profile.



DIMENSIONS
720*910*H990



W H I T N E Y

armchair

External structure with cannetté quilting upholstered in fabric Faber 24229/14 Testa di Moro. Seat upholstered in leather Soft 1151 Latte. Base in steel with satin black nickel-lacquered finish.



DIMENSIONS
930*910*H780

ADELE

armchair



DIMENSIONS
880*930*H820

The Adele armchair comes from a "cocoon" concept where the external frame, made of armrests and backrest, embraces the internal part to guarantee the maximum comfort through the use of high quality materials.



K H A M M A

armchair



DIMENSIONS
930*820*H710



SYBILLA SEDIA

chair

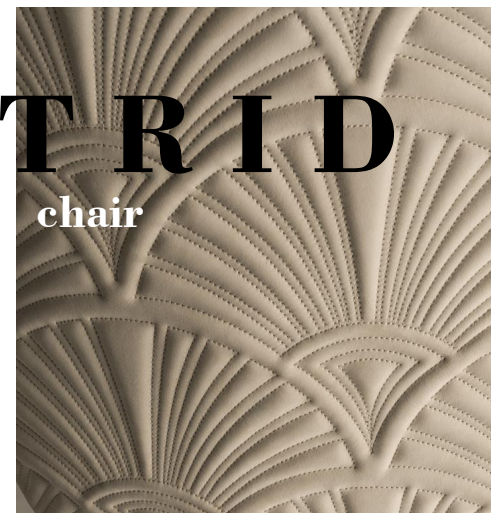


DIMENSIONS
540*580*H810



ASTRID

chair



DIMENSIONS
520*630*H950

CLOUD

chair



DIMENSIONS
640*570*H810



AMINTA

chair

Aminta is a chair in steel with a fine and elegant structure, with tapered legs, “dressed” with a lightly padded cover which sublimates its tailored nature and reminds of fashion elements, acting either as backrest and armrest at the same time. The padded seat completes the ergonomic part, whereas the “fashion” fabrics proposed enhance the prêt-à-porter characteristic of the chair. Available also for outdoor, where the padded cover is replaced by a round back cushion.



DIMENSIONS
640*570*H740

CLEM

chair



DIMENSIONS
600*590*H770

KYLO FRAMED

chair



Chair in curved wood, legs in conic-shaped metal tube and turned feet. Quilted upholstery in leather or fabric and backrest piping made in satin aluminium. Metal parts can be finished with any lacquer of the metal finish collection.



DIMENSIONS
600*610*H810



S T O N E



chair

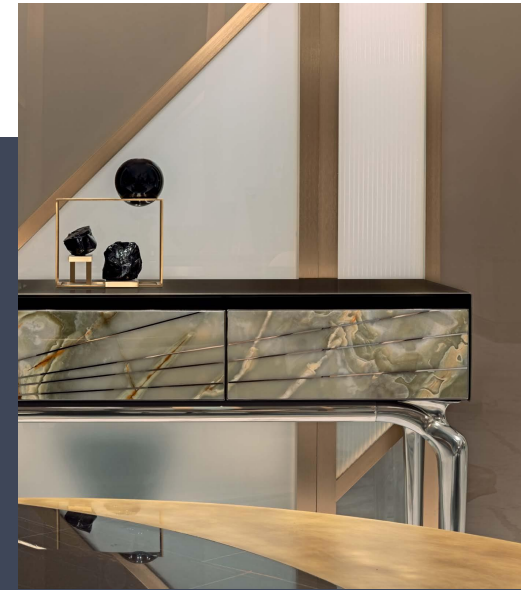


DIMENSIONS
530*590*H780



AURORA

consolle



DIMENSIONS
1630*450*H980

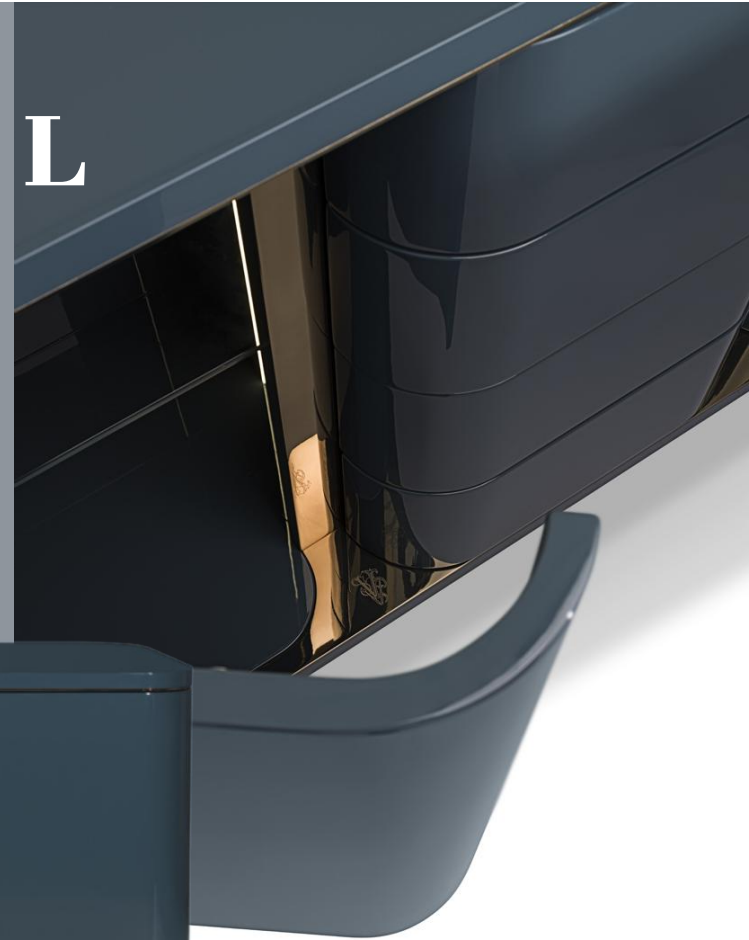


D O N E G A L

high unit

Cabinet in wood without edges, with curved walls and doors delineated by profiles and supports in steel. The shiny lacquered finish enhances the shapes and streamlines the volumes which internally allow a high containing capacity. Available also with internal LED lighting.

DIMENSIONS
2400*480*H850



LEONARDO

low unit

high unit



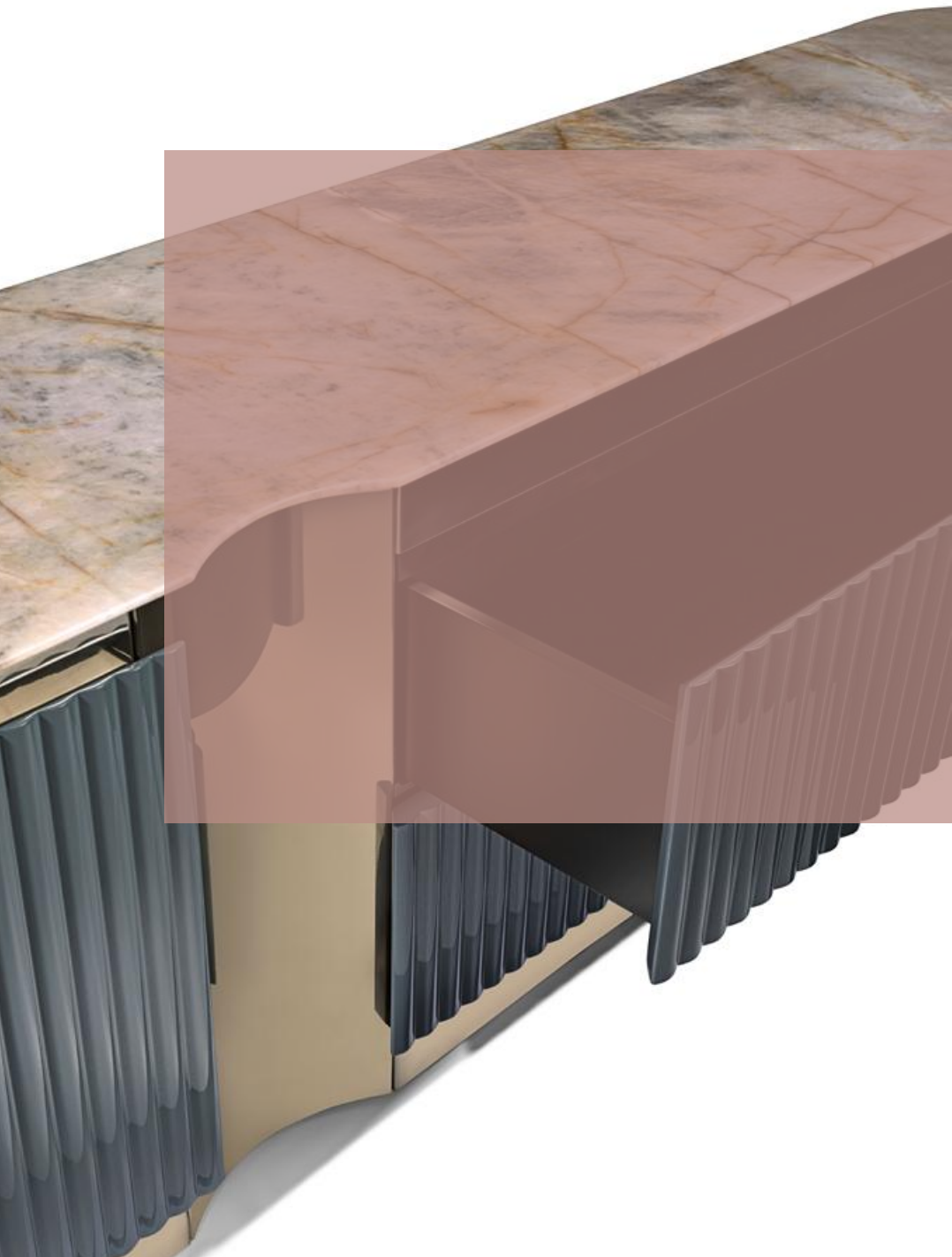
DIMENSIONS
2390*500*H900



DIMENSIONS
2400*500*H650

LEONARDO

chest of drawers



DIMENSIONS
2390*500*H650

HAMILTON

low unit
high unit



DIMENSIONS
2500*500*H750



DIMENSIONS
2500*500*H940

BARN EY

low unit



DIMENSIONS
2500*500*H700

DIMENSIONS
1840*500*H600



MAJESTIC

low unit

Main structure in solid wood with upper in lacquered in Metal Anthrax colour and lower part upholstered in Faber 24229/05 silver with cannete motif. Top in Portoro Silver marble. Feet and drawers profile in stainless steel with polished champagne finish.



LEGO

console



DIMENSIONS
1830*410*H900
1680*410*H900
1530*410*H900



VINCENT

console

Structure in tubular steel with Siena-lacquered polished finish. Top in marble Port Laurent finished with Texture 1-Cocodrillo.



DIMENSIONS
1800*420*H950

EKOS

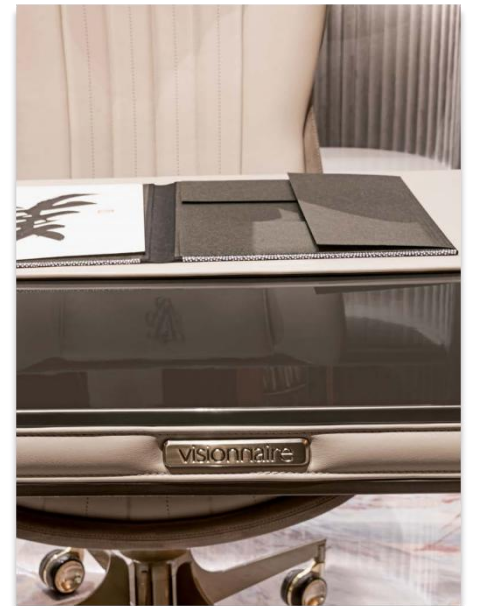
consolle



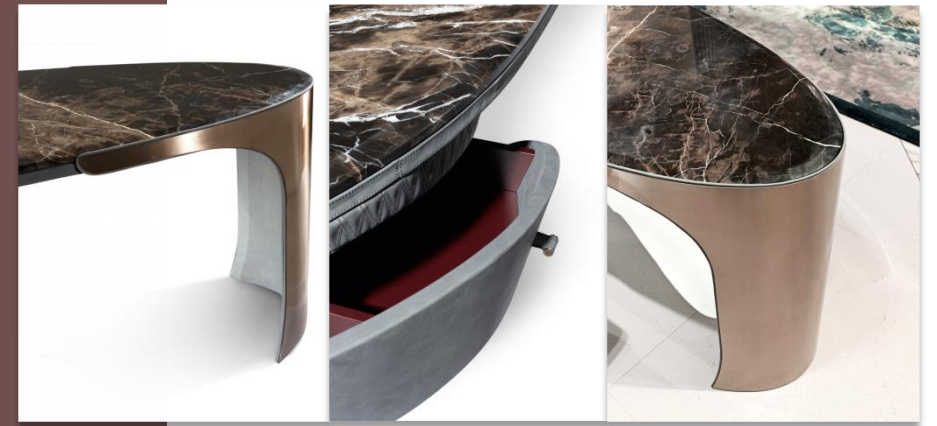
DIMENSIONS
1800*350*H900
1400*350*H900

AMBASSADOR SCRIVANIA

writing desk

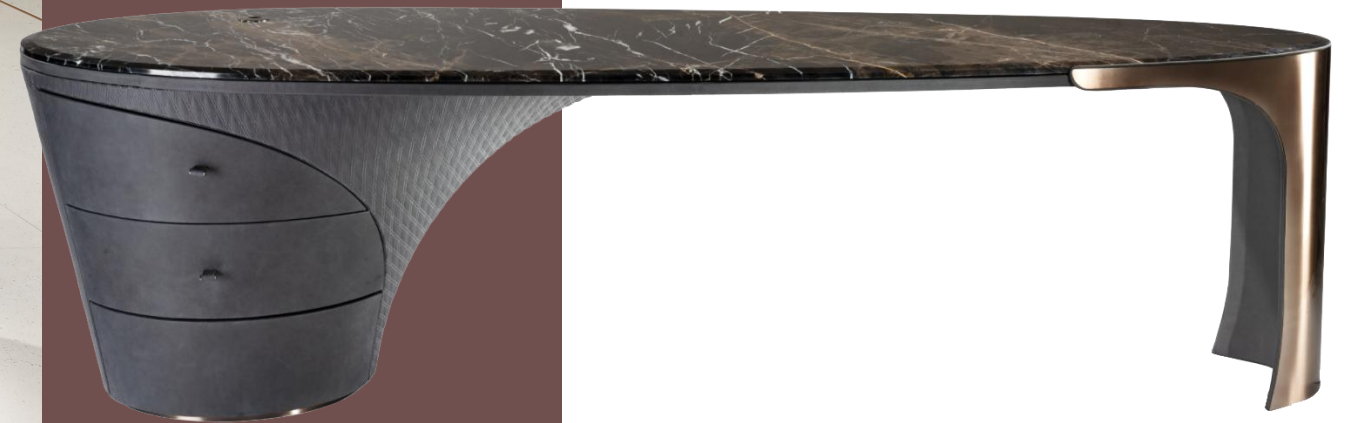


DIMENSIONS
2000*700*H750
2290*920*H760



J E T P L A N E

office



DIMENSIONS
2400*920*H760
2800*920*H760

GRANGER

low tables



DIMENSIONS
470*500*H500
400*430*H400
320*350*H300



KORVAC

low table



DIMENSIONS
1200**H400



F R A N K Y

low table



DIMENSIONS
500**H550



MILLER

low table



DIMENSIONS
1000*1000*H310
750*H370

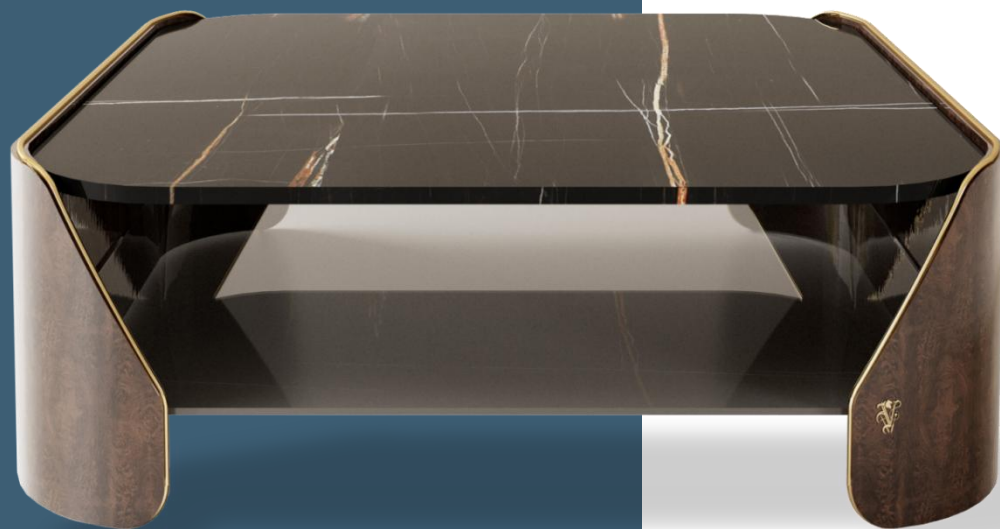




DIMENSIONS
650*650*H500

FITZGERALD

low table



DIMENSIONS
1200*1200*H400





BASTIAN

bed

Padded bed upholstered in Nabuk Sequoia 24314/25 Beige. Shaped headboard decorated with piping and band in soft 1196 Marmotta. Decorative friezes in gold-lacquered steel. It can be equipped with LED courtesy light mounted under the headboard profile.



DIMENSIONS
2900*2360*H1100



ULTRASOUNDLARGE

bed



DIMENSIONS
3300*2280*H1300

CÀ FOSCARI

bed



Headboard and bed frame upholstered in Soft 280 Argilla with "Cà Foscari" embroidery. Curved basement of the headboard and bed frame in steel with polished champagne-lacquered finish. Wooden slats.

DIMENSIONS
3300*2285*H1180



BELOVED ART

bed



DIMENSIONS
外径3370*2400*H2050
床垫1800*2000

BELOVED

bed



Bed upholstered in leather or fabric. Upholstered headboard with geometrical pattern, structure in plywood with slightly padded panels upholstered individually. Plinth and inserts in satinized stainless steel with engraved logo, predisposed for wall fixing. Bed base in plywood padded in polyurethane, made of several elements individually upholstered, decorated with four inserts in satinized stainless steel.

DIMENSIONS
外径3340*2190*H1380
床垫1800*2000



PRINCESS

bed

Bed upholstered in leather or fabric. Bedframe structure in ash solid wood carved and upholstered in leather with conic-shaped feet with satinized metal tips. Headboard with central part upholstered in leather, quilted with pleated decoration, and lateral parts upholstered in leather or fabric. Padding in polyurethane with different densities.



DIMENSIONS

2890*2300*H1070

3090*2300*H1070

LEONARDO LETTO

bed



DIMENSIONS
3350*2160*H1380
3630*2190*H1380
3760*2190*H1380
3830*2190*H1380



LEONARDO

Comodino
Bedside table

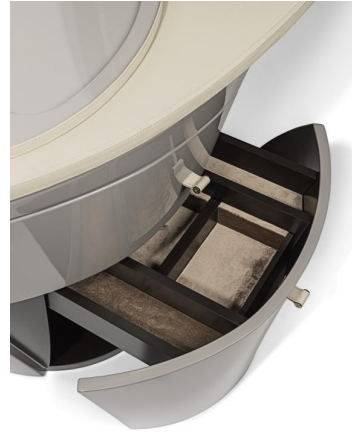


DIMENSIONS
700*480*H510



JET PLANE

make-up unit



DIMENSIONS
2070*500*H1740

KERWAN

dining table

Dining table, top in marble with bevelled edge and under board in lacquered wood. Polished and curved stainless steel base with concave external surfaces made of curved and polished marble. Metal parts available in the metal finishing selection. Also available in the veneer version with top and concave wooden surfaces coated in the materials of the veneer selection finishings. Available in the KERWAN RADICA version with top and concave surfaces of the legs in 100 gloss finish burr walnut, or in the combination with marble top and concave surfaces in burr walnut.



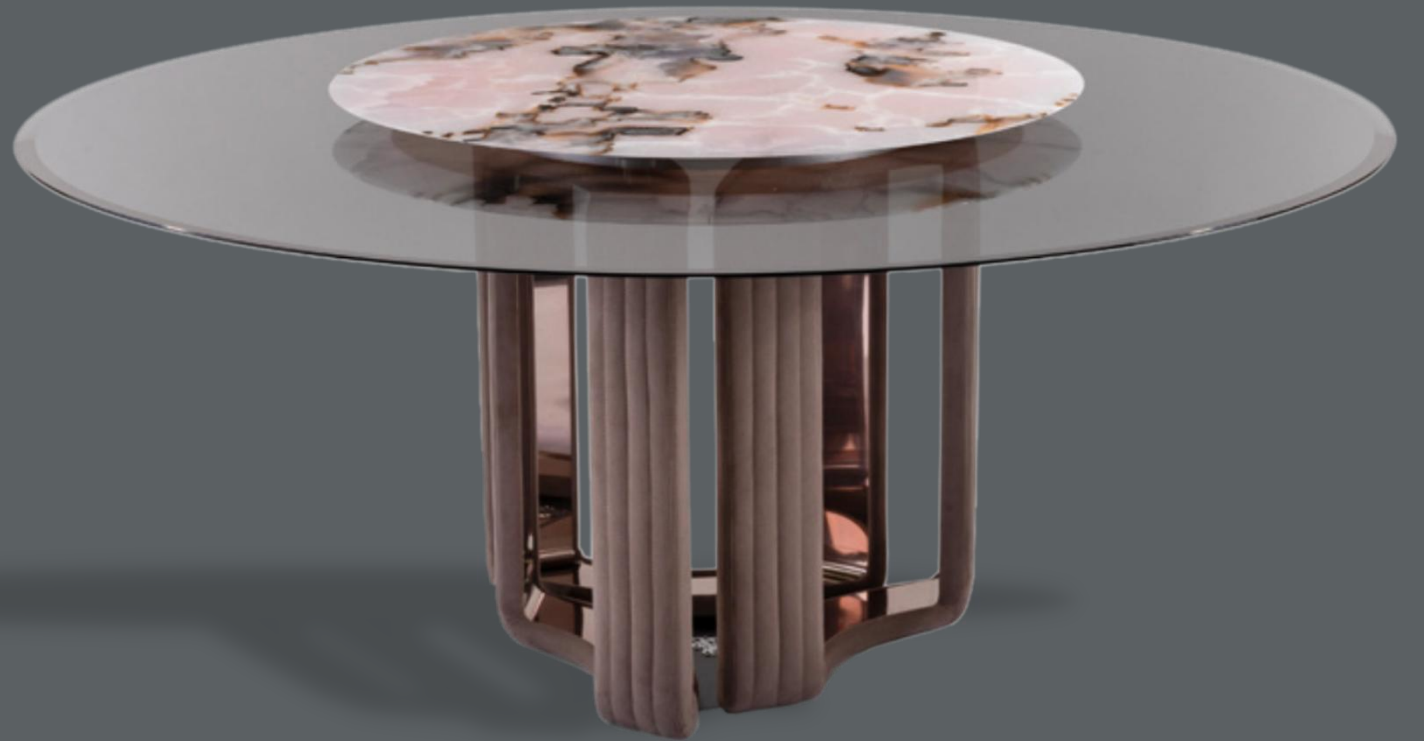
DIMENSIONS
2200*1100*H750





KYLO

dining table



DIMENSIONS
1800*H760



MORGAN

dining table



DIMENSIONS
1600*H750
1800*H750



MORGAN

dining table



DIMENSIONS
2400*1100*H750
2600*1100*H750



PALACE

dining table



DIMENSIONS
1600*H750



GALITSIN

dining table



Rectangular dining table with top in marble decorated with artistic insert by Roberta Verteramo, made in resin, gypsum, copper and pigments applied by hand. Top edge with rounded profile. Rounded under-top in shiny lacquered wood. Base consisting of two legs in tubular steel with rhomboid section. Metal parts available in any colour included in the metal finish selection.

DIMENSIONS
2600*1200*H720

TEMPTATION

dining table



DIMENSIONS
2600*1100*H780