

Wooden Quirky Style Furniture



A warm corner where time flows back, the charm of retro, and the soul of home decor.



Classics never go out of style, retro home decor takes you back to that era with stories.



In retro design, feel the warmth of time and classic elegance.



强调产品的天然与质朴。品牌设计强调使用原木、然石材、棉麻等环保材料，展现出大自然的原始之美。

The brand design emphasizes the use of environmentally friendly materials such as logs, natural stone, cotton and linen, showcasing the primitive beauty of nature.



1

新的家居消费场景

近年家居消费场景迎来革新。

1. 家居消费沉浸式体验的兴起

消费者不再满足于单纯的产品展示，他们更希望能在展厅中体验到真实的家居生活场景。为此，越来越多的展厅设计了沉浸式体验区，将家具、饰品、灯光、色彩等元素进行整体搭配，打造出完整的居住环境。

2. 个性化与定制化需求增加

现代消费者越来越注重家居环境的个性化表达，展厅因此也开始提供更多的定制化服务。无论是家具的尺寸、颜色、材质，还是整体的家装风格，消费者都可以根据个人需求进行定制。

3. 家居消费场景呈现社交与社区化趋势

展厅正在成为消费者的社交场所，鼓励与消费者在放松的氛围中交流对家居的想法和灵感。璞泊展厅还会定期举办设计分享会、WORKSHOP工作坊等活动，吸引家居爱好者参与，形成一个活跃的社区。

4. 环保与可持续发展的关注

消费者对环保的关注度不断提高，展厅也开始强调产品的环保属性和可持续发展理念。璞泊展厅会展示使用环保材料、可持续化环境友好的家具，向消费者传达绿色家居的理念。这种做法不仅符合消费者的价值观，也提升了璞泊品牌的社会责任感。

这些变化体现了消费者在家居消费中更加注重体验、个性化和社会互动的趋势，展厅已经从单纯的商品展示场所转变为一个多功能的生活体验和社交平台。



In recent years, home consumption scenes have ushered in innovation.

1. The rise of immersive experience in home consumption
Consumers are no longer satisfied with simple product displays. They hope to experience real home life scenes in exhibition halls. To this end, more and more exhibition halls have designed immersive experience areas, which match furniture, accessories, lighting, colors and other elements as a whole to create a complete living environment.

2. Increasing demand for personalization and customization
Modern consumers pay more and more attention to the personalized expression of the home environment, so exhibition halls have begun to provide more customized services. Whether it is the size, color, material of furniture, or the overall home decoration style, consumers can customize it according to personal needs.

3. Home consumption scenes show a trend of socialization and community
Exhibition halls are becoming a social place for consumers, encouraging them to communicate with consumers about their ideas and inspirations about home in a relaxed atmosphere. Pubo exhibition halls also regularly hold design sharing sessions, WORKSHOP workshops and other activities to attract home enthusiasts to participate and form an active community.

4. Attention to environmental protection and sustainable development
Consumers are paying more and more attention to environmental protection, and exhibition halls have also begun to emphasize the environmental attributes and sustainable development concepts of products. The Pubo showroom will display furniture made of environmentally friendly materials and sustainable and environmentally friendly, conveying the concept of green home to consumers. This practice not only conforms to the values of consumers, but also enhances the social responsibility of the Pubo brand.

These changes reflect the trend that consumers pay more attention to experience, personalization and social interaction in home consumption. The showroom has transformed from a simple commodity display place to a multi-functional life experience and social platform.

品牌理念

Brand Philosophy



2 新的家居消费群体

千禧一代与Z世代。

年轻群体对家居产品有着较高的审美要求，偏好现代、时尚和创新的设计。他们注重品牌的环保和社会责任理念，倾向于线上购物和数字化体验，但也看重线下的实际感受。

Millennials and Generation Z.

Young people have high aesthetic requirements for home products and prefer modern, fashionable and innovative designs. They pay attention to the brand's environmental protection and social responsibility concepts, tend to shop online and have digital experiences, but also value the actual experience offline.

品牌理念

Brand Philosophy

3 新的家居消费风格

这些风格各具特色，能够满足当代年轻人对不同生活方式的追求。无论是追求简约、自然，还是个性化与奢华感，年轻人都能在这些风格中找到契合自己审美和生活态度的家居设计。

These styles have their own characteristics and can meet the pursuit of different lifestyles of contemporary young people. Whether pursuing simplicity, nature, or individuality and luxury, young people can find home designs that fit their aesthetics and attitude towards life in these styles.



品牌理念

Brand Philosophy

新的家居消费风格

极简主义风格
Minimalist style



日式禅风

Japanese Zen style



波西米亚风格

Bohemian style



现代混搭风格

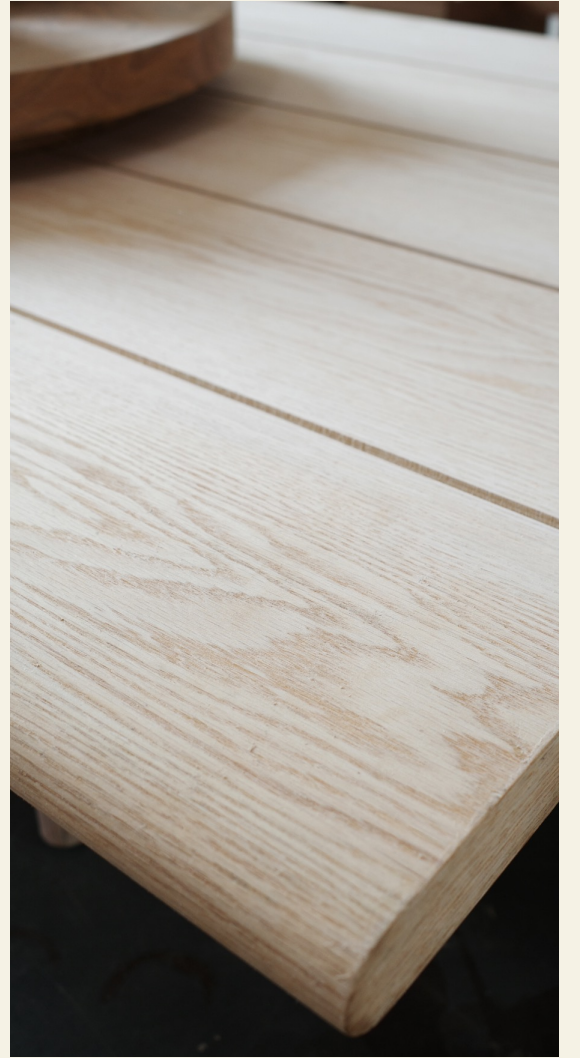
Modern mix and match style



北欧风格

Nordic style





木材加工细节



DB

The New Styles

“眼前一亮的家具面貌”

全系列产品

Product series



Polar Bear Sofa
北极熊



Pacific Sofa
太平洋



HARMONY
和谐



LAUREL
月桂



SOFT RADIANCE
柔和光



MASALA
马萨拉



Michel Club
米歇尔



Camaleonda
变色龙



Karma
因果



Mala sofa
马拉



MILOE
米洛



SENGU
森谷



Julep
薄荷酒



Pixel
像素

沙发系列
Sofa series



COSY CURVE
舒适曲线



Tufty-Time
塔夫蒂时间



VALETTA SOFA
瓦莱塔



Howard Sofa
霍华德



Charles Large Sofa
查理



Mjolk Sofa



cocktail
鸡尾酒



YUMI SOFA
由美



Le Bambole
竹林



N701



savanna sunset
稀树草原日落



GIN
金



MARALUNGA
马拉伦加



RAW CANVAS
原始画布



DS-707



cotton candy
棉花糖



ARCTIC GREY
北极灰

休闲椅系列
Leisure chair series



LOOP
洛普



Chris Lowe
克里斯洛



La Palma
拉帕尔玛



Spojene



Bellini
贝利尼



Sigg
西格



McKinsey
麦肯西



Borge
博格



Copenhagen
哥本哈根



SERIEN
赛里昂



Boomerang



Utrecht
乌得勒支



Czech
捷克



Busnelli
布斯



Ted
泰德



Odna
奥德娜



SORIANA
索里安娜



Monette
莫内特

茶几系列
Tea Table series



Athena



Andrea and Luca
安德里亚和卢卡



Agatha
阿加莎



Jumbo
珍宝



Ippico



Atlas
阿特拉斯



TIE
联结



PILLAR



Salontafel Slot



Bernini
贝尼尼



Mill
磨



Dawson
道森



Bottny
博特尼



Oxley
奥克斯利



Boulder
博尔德



Porto
波尔图



Venee
维尼



Joette
乔特



ville
维尔



ciocio
乔乔



Hannah
汉娜



Polar Sania
萨尼亚



Birignao
比里尼亚奥



NARA
奈良



ST04



DAMA
达玛

餐桌&餐椅系列
Dining table
and chair series



Veins
静脉



Roft
罗夫特



Cynthiaann
辛西安



Jeterson
杰特森



Mojave
莫哈维



Marianne
玛丽安



Rutherford
卢瑟福



Sculptures
雕塑



Hunting Table
狩猎桌



Vivi
维维



Herio
赫里奥



Minatomirai
美纳米拉



Miau



Mater
梅特



Kana
卡纳



Rey
雷伊



Moca
莫卡



Boucle



Leggera
莱格拉



Zita
齐塔



Sara
萨拉



Calum



Jeanneret
珍妮特



YUMI CHAIR
尤美



Kelly
凯利

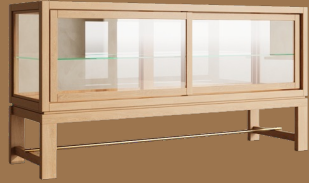


Umi
乌米



Mackintosh
麦金托什

边柜系列
Cantnet series



Torres
托里斯



Romi
罗米



Hargrove
哈格罗夫



Alga
阿尔加



Blanco
布兰科



Fabre
法布尔



Adler
阿德勒



Arona
阿罗纳



Bordeaux
波尔多



Omari
奥马里



Cinna
辛纳



NONO
诺诺



Jarel
嘉雷尔



Becca
贝卡



Torrance
托兰斯

床系列
Beds series



Tufty-Bed



Diana
黛安娜



LOUIS
路易斯



Frame



MU
慕



Aldgate



Cama Veras
卡玛维拉斯



SOFTBAY



byron
拜伦



Plato
柏拉图



primary
初

床头柜&书桌&梳妆台&矮凳系列

Bedside tables & desk & dresser & smallseat series



Nursery



Marcel
马塞尔



BEYLA



Artie
阿蒂



ZACH
扎克



Bealle
比利



Birkley



JAMESON
詹姆斯



Lisbon
里斯本



Avila
阿维拉



ECLIPSE DESK
日食桌



luna
露娜



Amber
琥珀



Samantha
萨曼莎



Islands
群岛



Eden
伊甸园



Tower
塔



Corbu
科尔布



Mogensen
莫根森



Cavett
卡维特



Lendorf
伦多夫

“不同材质与面料的碰撞。”

01.



○ 大理石石材

经过亿万年的地质变迁，大理石形成了独特的质感和硬度。千变万化的天然纹理，每一块都是大自然独一无二的杰作。且在光线的照耀下，会呈现出丰富多变的光影效果。

After billions of years of geological changes, marble has developed a unique texture and hardness. The ever-changing natural textures, each piece is a unique masterpiece of nature. And under the illumination of light, it will present rich and varied light and shadow effects.

02.



○ 进口特殊面料

每一寸面料，都蕴含着匠人对材质的深刻理解。随时间的推移，这些特殊面料不仅不会失去其魅力，反而会在每一次洗涤与入座中，逐渐沉淀下独特的韵味。

Every inch of fabric contains the craftsman's profound understanding of materials. Over time, these special fabrics not only retain their charm, but also gradually accumulate a unique charm in every wash and sitting.

03.

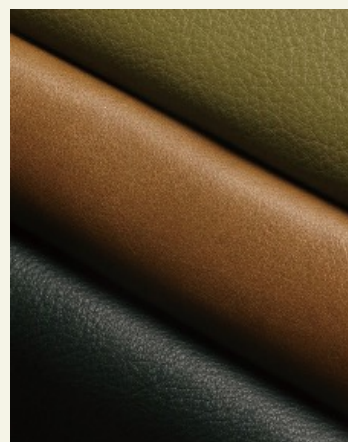


○ 进口木材

选择这些木材，也是选择了一种与自然共生的生活方式。所采用的木材，源自遥远的原始森林，经过时间的洗礼，这些木材的纹理深邃而富有层次。

Choosing these woods is also choosing a way of living that coexists with nature. The wood used originates from distant primitive forests, and after the baptism of time, the texture of these woods is deep and layered.

04.



○ 皮革面料

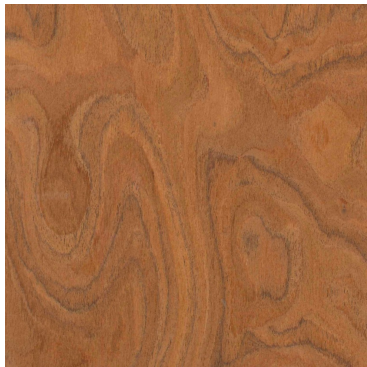
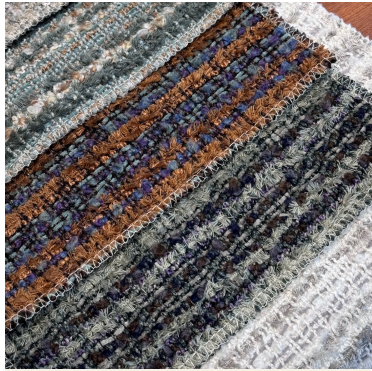
皮革表面光泽饱满，存在于家具的每一个细节。无论是缝合处的精细处理，还是整体造型的流畅线条，优质的皮革经过特殊处理，具有出色的抗磨损和耐老化性能。

The leather surface has a full luster and is present in every detail of the furniture. Whether it is the fine treatment of the stitching or the smooth lines of the overall shape, high-quality leather has been specially treated to have excellent wear and aging resistance.



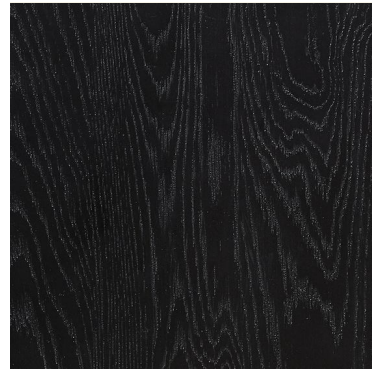
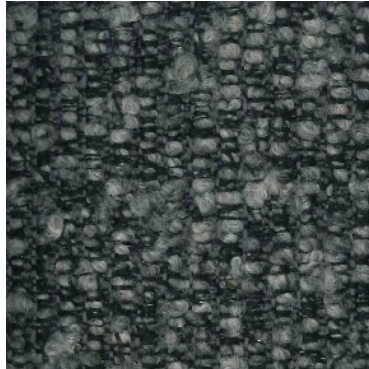
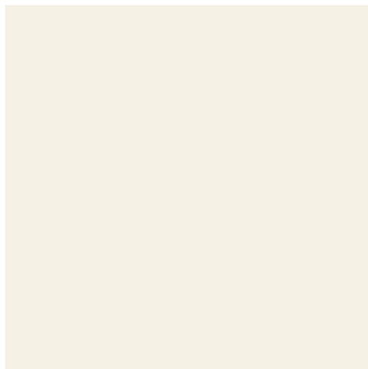
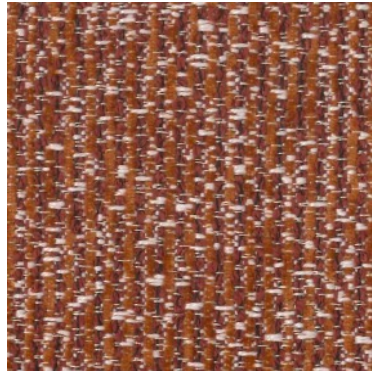
Special fabric

Every inch of fabric contains the craftsman's profound understanding of materials.



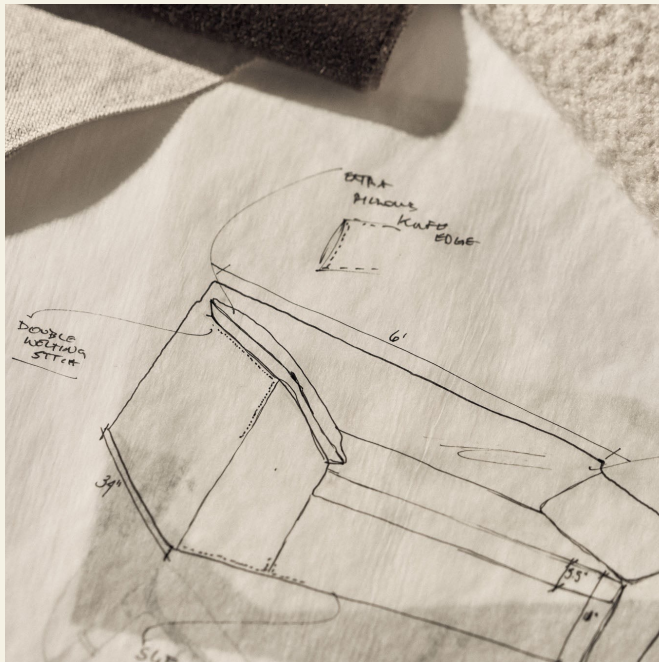
Imported wood

The wood used originates from distant primitive forests.



Material series

“温润自然，粗野质朴。”



“

Warm and natural, rough and rustic.



“适应多样的空间风格。”

For all styles
Living spaces.

