

KINGSTAR[®] | KITCHEN HARDWARE
厨房五金

Simple is more
极简更有内涵



金思达公众号
Wechat



金思达微官网
Website

广东金思达家居五金有限公司
GUANGDONG KINGSTAR
FURNITURE ACCESSORIES CO.,LTD

广东省佛山市顺德区勒流镇百丈工业区工业一路之三
No.3, Industrial Road No.1, Baizhang Industrial, Leliu
Town, Shunde, Foshan, Guangdong, China.

邮箱Mail: E-mai: Janet@chinakingstar.net
电话Tel: 0757-25534515
网址Web: www.chinakingstar.net





铝合金抽中抽拉篮

Double Tiers of Aluminium organizer

产品特点 Features

1.采用新型环保材料板材设计，使篮子不仅粗壮美观，更具承托力，让整个橱柜更高雅别致。

1. Using new environmentally friendly material plate design, the basket is not only strong and beautiful, but also more supportive, making the entire cabinet more elegant and unique.

2.配全拉伸静音阻尼导轨，使产品在使用过程中悄无声息的滑动。

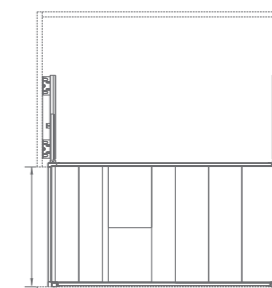
2. Equipped with fully stretched silent damping guide rails to allow the product to slide silently during use.

3.加深大容量，满足日常收纳所需。可储放多种不同用途的厨房物品，空间任由你掌控。

3. Deepen the large capacity to meet daily storage needs. It can store a variety of kitchen items for different uses, and the space is at your disposal.

4.正面挡板采用现代风格的铝框，底板采用压花底纹设计，篮子整体内外色泽一致，抗腐蚀性强，经久耐用。

4. The front baffle adopts a modern-style aluminum frame, and the bottom plate adopts an embossed shading design. The overall color of the basket is consistent inside and outside, has strong corrosion resistance, and is durable.



技术参数 Technical parameters

型号 Model No.	规格/宽x深x高 Product Size.	柜体 Cabinet	材质 Material	表面处理 Surface treatment
SW-600CZC	W564xD470xH226	600mm	铝合金 Aluminium	氟碳喷涂 Fluorocarbon spraying
SW-700CZC	W664xD470xH226	700mm		
SW-750CZC	W714xD470xH226	750mm		
SW-800CZC	W764xD470xH226	800mm		
SW-900CZC	W864xD470xH226	900mm		



钢化玻璃阻尼三边碗碟篮

Tempered glass of three sides dish rack organizer

产品特点 Features

1.充分利用地柜的高度空间对厨房日用品进行分层，增加地柜抽屉多种储存功能。

1. Make full use of the high space of the base cabinet to layer kitchen supplies and add multiple storage functions to the base cabinet drawers.

2.分类储存各种大小不一厨房用品，方便取放。

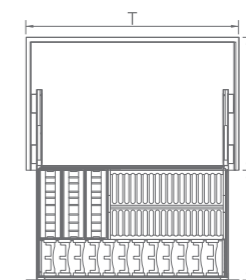
2. Store various kitchen supplies of different sizes in categories for easy access.

3.基材采用优质钢化玻璃及铝型材，结构件采用ABS完美的拼装工艺，无指纹表面处理，经久耐用，环保健康。

3. The base material is made of high-quality tempered glass and aluminum profiles, and the structural parts are made of ABS perfect assembly technology. Fingerprint-free surface treatment, durable, environmentally friendly and healthy.

4.一体化的整体设计专为中式厨房量身定做，圆滑线条的大气美观设计，使篮体与橱柜结合更加完美。

4. The integrated overall design is specially tailored for Chinese-style kitchens, with sleek lines and a large and beautiful design. Make the combination of basket body and cabinet more perfect.



技术参数 Technical parameters

型号 Model No.	规格/宽x深x高 Product Size.	柜体 Cabinet	材质 Material
SW-BL600WLA	W564xD430xH175	600mm	钢化玻璃+铝型材 Tempered glass+Aluminum
SW-BL700WLA	W664xD430xH175	700mm	
SW-BL750WLA	W714xD430xH175	750mm	
SW-BL800WLA	W764xD430xH175	800mm	
SW-BL900WLA	W864xD430xH175	900mm	

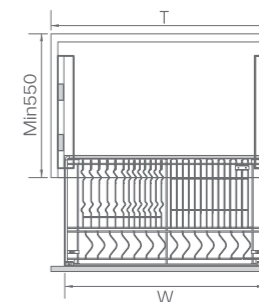
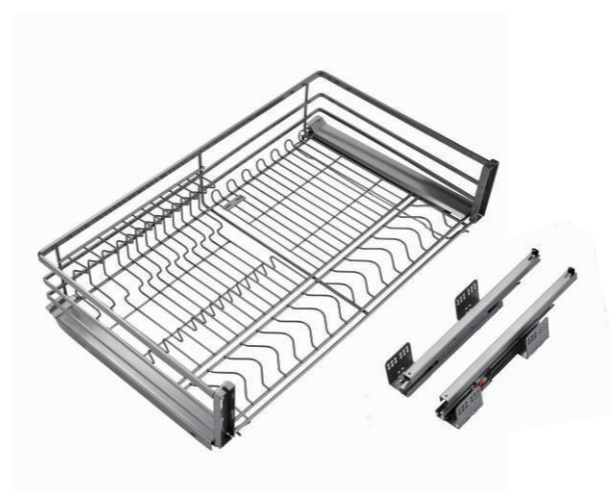
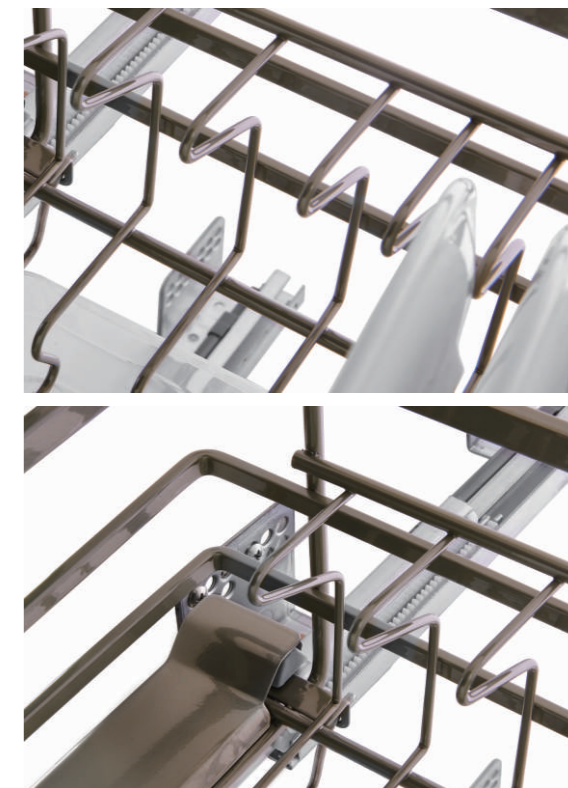


扁线纳米干镀三边碗碟篮

Flat wire Nano plating of three-sides dish rack

产品特点 Features

- 充分利用地柜的高度空间对厨房日用品进行分层，增加地柜抽屉多种储存功能。
1. Make full use of the high space of the base cabinet to layer kitchen supplies and add multiple storage functions to the base cabinet drawers.
- 分类储存各种大小不同的厨房用品，方便取放。
2. Store kitchen supplies of various sizes in categories for easy access.
- 一体化的整体设计专为中式厨房量身定做，圆滑线条的大气美观设计，使篮体与橱柜结合更加完美，全新的结构设计方案，让打开、拉出的过程流畅且安静。
3. The integrated overall design is specially tailored for Chinese-style kitchens, with sleek lines and a large and beautiful design. The combination of the basket body and the cabinet is more perfect, and the new structural design makes the process of opening and pulling out smooth and quiet.
- 基材采用优质碳钢冲压折弯，采用高精度焊接设备，完美的焊接工艺；采用全球领先的德国二涂生产线，纳米干镀的表面处理，经久耐用，环保健康。
4. The base material is made of high-quality carbon steel stamped and bent, using high-precision welding equipment and perfect welding technology; it adopts the world's leading German secondary coating production line and nanoplating surface treatment, which is durable, environmentally friendly and healthy.



技术参数 Technical parameters	型号 Model No.	规格/宽x深x高 Product Size.	柜体 Cabinet	材质 Material
	SW-BX600WLB	W564xD430xH185	600mm	扁线碳钢 Flat carbon steel
	SW-BX700WLB	W664xD430xH185	700mm	
	SW-BX720WLB	W684xD430xH185	720mm	
	SW-BX750WLB	W714xD430xH185	750mm	
	SW-BX800WLB	W764xD430xH185	800mm	
	SW-BX900WLB	W864xD430xH185	900mm	



双扁线纳米干镀三边碗碟篮

Double flat wires Nano plating of three-sides dish rack

产品特点 Features

1.环保的纳米干镀科技，防腐抗氧化性，大大提升拉篮使用寿命。

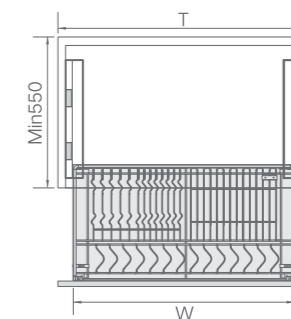
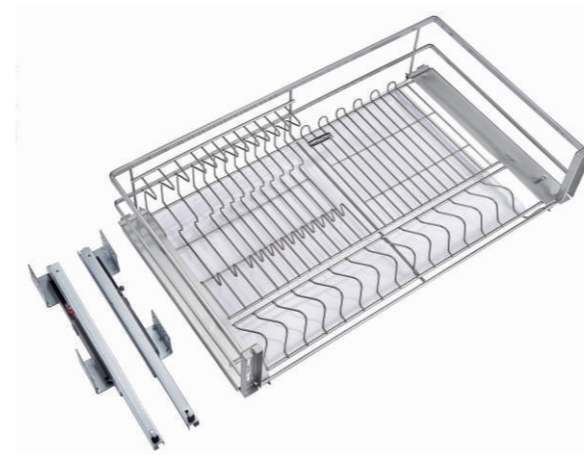
1. Environmentally friendly nanoplating technology, anti-corrosion and oxidation resistance, greatly extending the service life of the basket.

2.增加网格凹槽，碗碟竖向存放沥水收纳两不误，让厨房清洁工作更轻松。

2. Add grid grooves to store dishes vertically and drain water, making kitchen cleaning easier.

3.储存各类大型厨房用品，并可根据不同的柜体选配不同的规格，可自由选用多种不同级别的导轨。

3. Store all kinds of large kitchen supplies, and can choose different specifications according to different cabinets. A variety of different levels of guide rails can be freely selected.



技术参数 Technical parameters	型号 Model No.	规格/宽x深x高 Product Size.	柜体 Cabinet	材质 Material
	SW-BX600WLA	W564xD430xH185	600mm	扁线碳钢 Flat carbon steel
	SW-BX700WLA	W664xD430xH185	700mm	
	SW-BX720WLA	W684xD430xH185	720mm	
	SW-BX750WLA	W714xD430xH185	750mm	
	SW-BX800WLA	W764xD430xH185	800mm	
	SW-BX900WLA	W864xD430xH185	900mm	

Minimal luxury

精湛工艺

现代精湛工艺，将品质与格调完美结合，
清新、雅致、宁静的空间里，
感受一种至清至纯的心境，
以清雅的生活方式，
演绎对生命的深层感悟。

Modern exquisite craftsmanship perfectly combines quality and style.
In a fresh, elegant and quiet space, you can feel a pure and pure state of mind,
and with an elegant lifestyle, you can interpret the deep understanding of life.





铝合金抽中抽调味篮

Double Tiers of Aluminium bottle pull out organizer

产品特点 Features

1. 新型环保材料大包围设计，使篮子不仅粗壮美观，而且更具承托力。

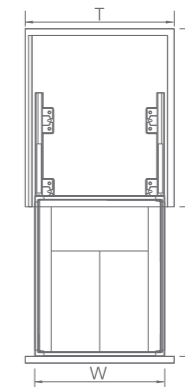
1. The large surrounding design of new environmentally friendly materials makes the basket not only strong and beautiful, but also more supportive.

2. 篮体采用优质钢材，纳米干镀表面处理工艺，赋予产品超强防锈能力。

2. The basket body is made of high-quality steel and has a nanoplated surface treatment process, giving the product super anti-rust capabilities.

3. 上下分层分区收纳，内部分区增加分隔装置，减少拉篮开合时器具之间的碰撞，最大限度保护餐具及收纳的整洁度。

3. The storage is divided into upper and lower layers, and a dividing device is added in the inner section to reduce the collision between the appliances when the basket is opened and closed. Protect the cleanliness of tableware and storage to the greatest extent.



技术参数 Technical parameters	型号 Model No.	规格/宽x深x高 Product Size.	柜体 Cabinet	表面处理 Surface treatment	材质 Material
	SW-LHJ200	W164xD470xH552	200mm		
	SW-LHJ300	W264xD470xH552	300mm	氟碳喷涂	铝合金
	SW-LHJ350	W314xD470xH552	350mm	Fluorocarbon	Aluminum
	SW-LHJ400	W364xD470xH552	400mm	spraying	
	SW-LHJ450	W414xD470xH552	450mm		



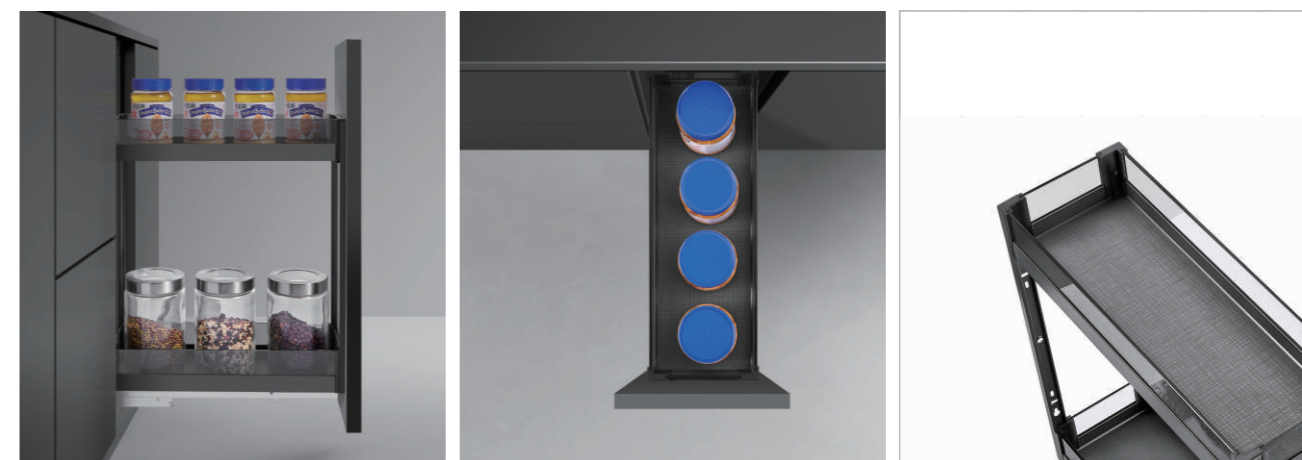
钢化玻璃阻尼三层调味篮
3-Layers Tempered glass of bottle pull out organizer(B style)

产品特点 Features

- 1.用于储存多种不同用途的厨房用品，完美的外形设计，合理的结构配合，造就了此产品适用于各类消费人群，可自由选用多种不同级别的导轨。
 - 2.一体化的整体设计，有利于把烦琐的烹饪用品整齐收集，更具特色承托设计，使得每次的推拉都倍感平稳。
 - 3.基材采用优质钢化玻璃及铝型材，结构件采用ABS完美的拼装工艺，无指纹表面处理，经久耐用，环保健康。
1. Used to store a variety of kitchen supplies for different purposes, with perfect appearance design and reasonable structural coordination. This makes this product suitable for all types of consumer groups, and they can freely choose from a variety of different levels of guide rails.
2. The integrated overall design is conducive to the integrated collection of cumbersome cooking supplies, and it has a more unique supporting design. Make every push and pull feel smoother.
3. The base material is made of high-quality tempered glass and aluminum profiles, and the structural parts are made of ABS perfect assembly technology with no fingerprint surface treatment. Durable, environmentally friendly and healthy.



技术参数 Technical parameters	型号 Model No.	规格/宽x深x高 Product Size.	柜体 Cabinet	材质 Material
	SW-3BL300B	W250xD425xH430	300mm	钢化玻璃+铝型材 Tempered glass+Aluminum
	SW-3BL350B	W300xD425xH430	350mm	
	SW-3BL400B	W350xD425xH430	400mm	
	SW-3BL450B	W400xD425xH430	450mm	

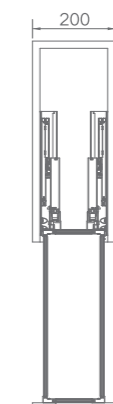


钢化玻璃阻尼双层调味篮

Bottom mounted 2 Layers Tempered glass of bottle pull out organizer

产品特点 Features

- 1.充分利用地柜的高度空间对厨房日用品进行分层，增加地柜抽屉多种储存功能。
1. Make full use of the high space of the base cabinet to layer kitchen supplies and add multiple storage functions to the base cabinet drawers.
- 2.采用优质缓冲阻尼导轨，推拉顺畅平稳。上下两层高、矮瓶区，合理收纳瓶瓶罐罐。
2. Using high-quality buffer and damping guide rails, push and pull are smooth and stable. There are two high and low bottle areas on the upper and lower floors for reasonable storage of bottles and cans.
- 3.篮体加高设计，使篮体与橱柜结合更加完美，全新的结构设计方案，再多调料瓶，一架到位。
3. The heightening design of the basket body makes the combination of the basket body and the cabinet more perfect. The new structural design scheme allows for more seasoning bottles to be placed on one shelf.



技术参数 Technical parameters	型号 Model No.	规格/宽x深x高 Product Size.	柜体 Cabinet	材质 Material
	SW-BL150	W100xD425xH430	150mm	
	SW-BL200	W150xD425xH430	200mm	钢化玻璃+铝型材
	SW-BL250	W200xD425xH430	250mm	Tempered glass+Aluminum
	SW-BL300	W250xD425xH430	300mm	

扁线纳米干镀调味篮

3-Layers Nano plating flat wire of bottle pull out organizer

产品特点 Features

1.用于储存多种不同用途的厨房用品，完美的外形设计合理的结构配合，造就了此产品适用于各类消费人群可自由选用多种不同级别的导轨。

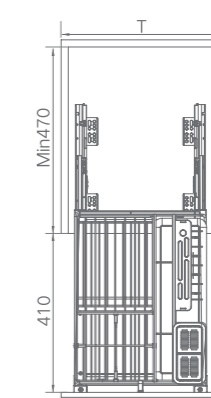
1. Used to store a variety of kitchen supplies for different purposes, with perfect appearance design and reasonable structural coordination. This makes this product suitable for all types of consumer groups and can freely choose from a variety of different levels of guide rails.

2.一体化的整体设计，有利于把繁琐的烹饪用品整齐收集，更具特色承托设计，使得每次的推拉都倍感平稳。

2. The integrated overall design is conducive to the integrated collection of tedious cooking supplies. The more unique supporting design makes every push and pull feel smoother.

3.完美的焊接工艺：采用全球领先的德国二涂生产线，纳米干镀的表面处理，经久耐用，环保健康

3. Perfect welding process: using the world's leading German secondary coating production line and nanoplating surface treatment, Durable, environmentally friendly and healthy



技术参数 Technical parameters	型号 Model No.	规格/宽x深x高 Product Size.	柜体 Cabinet	材质 Material
	SW-BX300	W235xD430xH400	300mm	
	SW-BX350	W285xD430xH400	350mm	扁线碳钢
	SW-BX400	W335xD430xH400	400mm	Flat carbon steel
	SW-BX450	W385xD430xH400	450mm	



钢化玻璃全拉转角篮

Universal Magic corner Tempered Glass of full open pull out organizer with bidding (soft close)

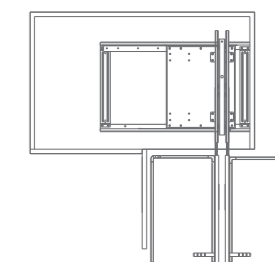
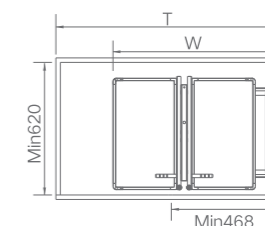
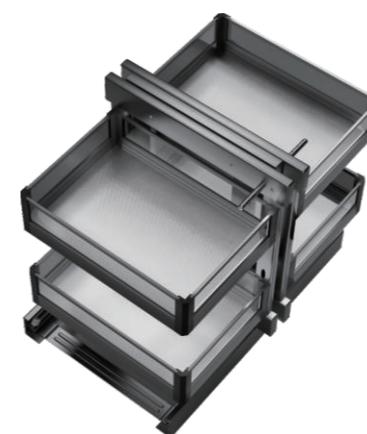
产品特点 Features

1.充分利用转角位置，分体连动的设计，可把全部篮子拉出柜体，极大方便储物。在左开或右开转角中均可安装，真正的左、右共用。

1. Make full use of the turning position and the split-linkage design to move all baskets Pull out the cabinet for great convenience in storage. When turning left or turning right.Both can be installed, and truly can be used on both left and right sides.

2.关门有阻尼，无论是放锅具碗碟还是瓶瓶罐罐，在缓冲阻尼的作用下，都能稳当不摇晃，防止置放物品的不稳定碰撞破裂。

2. The door has damping, whether you are putting pots, dishes or bottles. Under the effect of buffering and damping, it can be stable without shaking and prevent it from being placed. Unstable collision of items breaking.



技术参数 Technical parameters	型号 Model No.	规格/宽x深x高 Product Size.	柜体 Cabinet	材质 Material
	SW-NBL900QLL	W660xD455xH595	800/900mm	钢化玻璃+铝材 Tempered glass+Aluminum

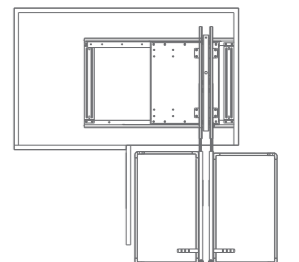
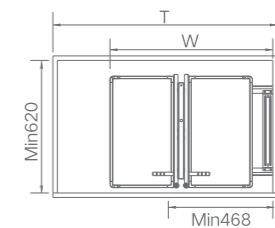
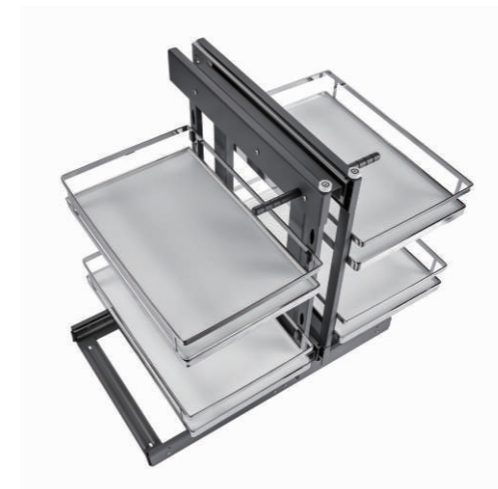


扁线全拉转角篮

Universal Magic corner Flat wire of full open pull out organizer (soft close)

产品特点 Features

- 1.底部采用防滑垫板，防滑、防水，更经久耐用。
1. The bottom uses a non-slip pad, which is non-slip, waterproof and more durable;
- 2.大扁铁包围，让整个橱柜更豪华高档。
2. Surrounded by large flat iron, making the entire kitchen cabinet more luxurious and high-end.
- 3.分体连动的设计，可自由选择需要使用的篮子，篮体可根据不同的存放要求，选用不同特色的篮体。
3. Split linkage design, you can freely choose the basket you need to use, and the basket body can be According to different storage requirements, choose baskets with different characteristics.



技术参数 Technical parameters	型号 Model No.	规格/宽x深x高 Product Size.	柜体 Cabinet	材质 Material
	SW-BX900QLL	W660xD455xH595	800/900mm	铁+木板 Flat wire+wooden

钢化玻璃吊柜升降机

Tempered glass of lifter pull down 90°

产品特点 Features

1. 篮体可适应不同的存放要求，选用不同特色的篮体。独特的设计使篮体承重点全部转移至柜体里，确保门板不会下沉。左开门或右开门均可安装。

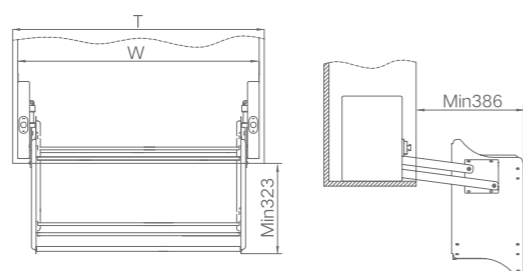
1. The basket body can adapt to different storage requirements, and basket bodies with different characteristics can be selected. The unique design allows all the load-bearing points of the basket to be transferred to the cabinet, ensuring that the door panel will not sink. It can be installed with either left-hand or right-hand opening.

2. 建议存放不常用的器皿，小家电，碗碟，干果，调料用品等物品。

2. It is recommended to store items such as utensils, small household appliances, dishes, fruits, condiments, etc. that are not commonly used.

3. 基材采用优质钢化玻璃及铝型材，结构件采用ABS完美的拼装工艺，无指纹表面处理，经久耐用，环保健康。

3. The base material is made of high-quality tempered glass and aluminum profiles, and the structural parts are made of ABS perfect assembly technology. Fingerprint-free surface treatment, durable, environmentally friendly and healthy.



技术参数 Technical parameters

型号 Model No.	规格/宽x深x高 Product Size.	柜体 Cabinet	材质 Material
BLSJJ-600A	W565xD280xH560	600mm	钢化玻璃+铝型材 Tempered glass+Aluminum
BLSJJ-700A	W665xD280xH560	700mm	
BLSJJ-800A	W765xD280xH560	800mm	
BLSJJ-900A	W865xD280xH560	900mm	

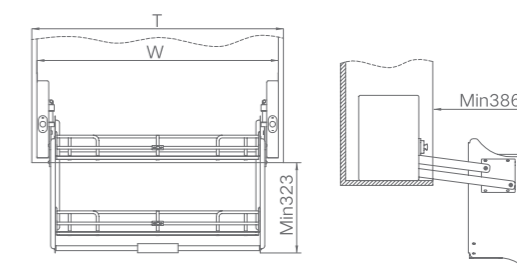


纳米干镀扁线吊柜升降机

Nano plating Flat wire of lifter
pull down 90°

产品特点 Features

- 1.加强厨房空间利用率，克服传统吊柜存在安全隐患，方便收纳。摆脱身高困扰。
1. Enhance the space utilization of the kitchen, overcome the safety hazards of traditional wall cabinets, and facilitate storage. Get rid of height problems.
- 2.升降力量可调，超人性化设计，为家人方便和安全而配置。
2. The lifting force is adjustable and the super-human intelligent design is configured for family convenience and safety.
- 3.建议存放不常用的器皿，零食，碗碟，干果，饮料等物品。
3. It is recommended to store rarely used utensils, snacks, dishes, fruits, drinks and other items.
- 4.加强型升降器让您使用无忧，优质钢材托盘经久耐用。
4. The reinforced lifter allows you to use it without worries, and the high-quality steel pallet is durable.



技术参数 Technical parameters	型号 Model No.	规格/宽x深x高 Product Size	柜体 Cabinet	材质 Material
	FL600-SJJ	W565xD280xH560	600mm	
	FL700-SJJ	W665xD280xH560	700mm	扁线碳钢
	FL800-SJJ	W765xD280xH560	800mm	Flat wire
	FL900-SJJ	W865xD280xH560	900mm	