

G9A/G9B

Waterproof and Dustproof Miniature Micro Switch



■ Features



- ◆ G9A dust and water proof (IP67) / G9B dust proof (IP40)
- ◆ Small compact size
- ◆ Long life and high reliability
- ◆ Variety of terminals
- ◆ Variety of levers optional
- ◆ Long over-travel of 2.20mm minimum
- ◆ Widely used in auto control, home appliances and other industry control

■ Application

- ◆ Auto electronics
- ◆ Home appliances
- ◆ Apparatus and instruments

■ Parameters:

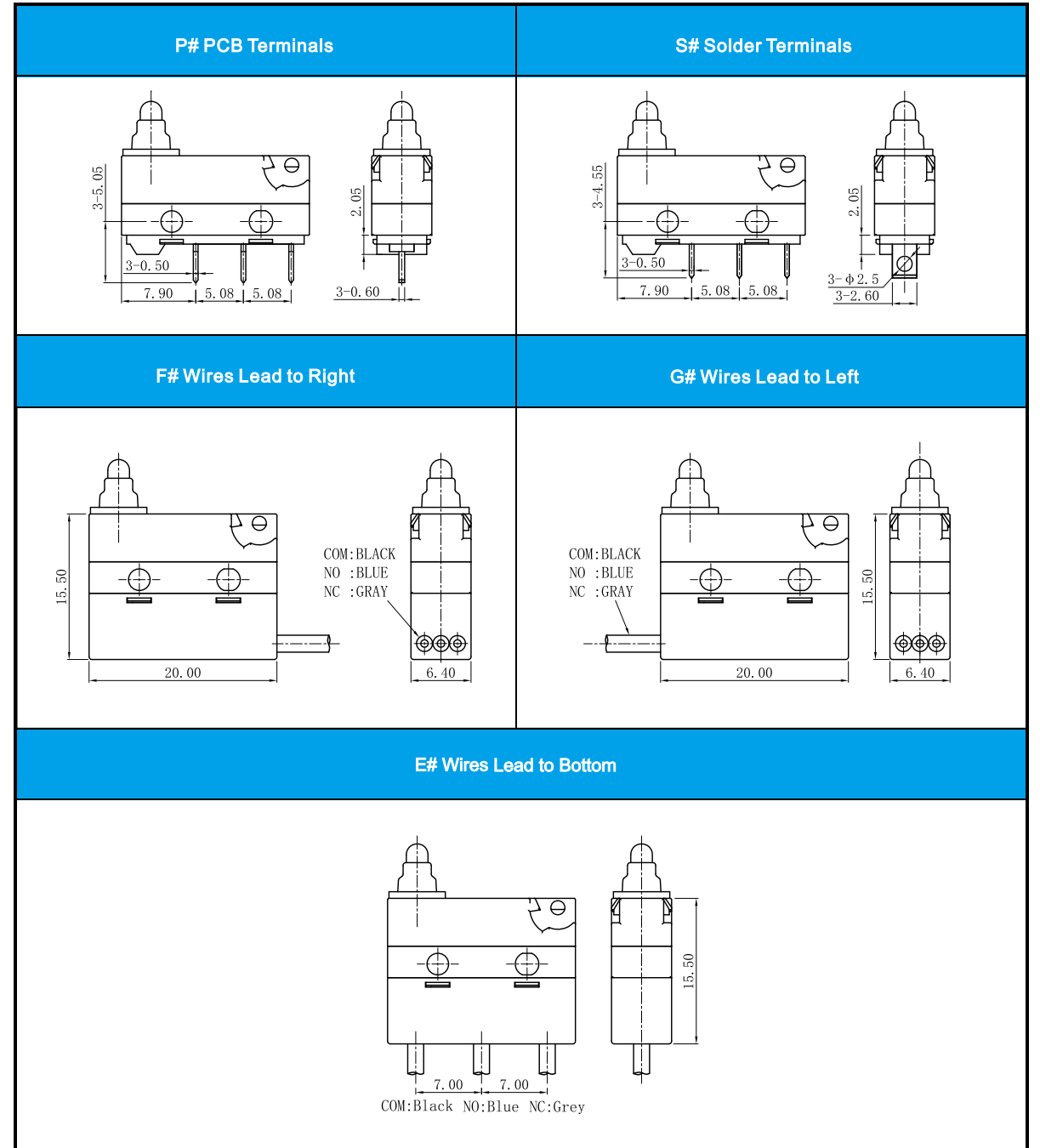
| | | |
|-----------------------------------|---|---|
| Rating | P1 | 0.1A 125/250VAC, 0.1A 30VDC |
| | 05 | 5(2)A 125/250VAC, 5A 30VDC |
| Operating Frequency | Electrical | 10~30 cycles/min |
| | Mechanical | 120 cycles/min |
| Contact Resistance (Initiative) | With terminals type | ≤100mΩ |
| | With wire type | ≤200mΩ (500mm wires length) |
| Insulation Resistance (at 500VDC) | | ≥100MΩ |
| Voltage Resistance | Between terminals | AC 500V, 50/60Hz, 1min |
| | Between terminals and uncharged metal parts | AC 1,000V, 50/60Hz, 1min |
| Service Life | Electrical | 50,000 cycles |
| | Mechanical | 200,000 cycles (IP67) 200,000 cycles (IP40) |
| Operating Temperature | | -40~+85°C |
| Operating Humidity | | 95% RH Max. |

G9A/G9B Series Micro Switch Ordering Instruction

| | | | |
|------|---|---|--|
| G9A | Switch Type | G9A IP67 G9B IP40 Series - Micro Switch | |
| | Electrical Rating | P1 ENEC/CQC: 0.1A 125/250VAC 30VDC 40T85 μ 5E4 UL/cUL: 0.1A 125/250VAC 30VDC | 05 ENEC/CQC: 5(2)A 125/250VAC 30VDC 40T85 μ 5E4 UL/cUL: 5A 125/250VAC 30VDC |
| 200 | Max Operating Force at Pin Plunger | 200 200gf Max | Other |
| S | Terminal Type | S Solder terminals | P Straight PCB terminals |
| 01 | Lever Type | 00 No Lever Pin Plunger | 01 01 Lever |
| A | Circuitry | A SPDT | B SPST-NC C SPST-NO |
| F | Waterproof Code | F Sealed housing with glue injection (only apply to wired switches) | |
| 300 | Wires Length (AWG Number UL1007 AWG Type 20#) | 500mm length standard lead wires | 300mm length |
| T001 | Custom Code | General | Customized according to requirements the code format is T+serial number XXX for example:T001 |
| U | LOGO | U Unionwell | Other |

Terminal Type

Terminal Thickness:0.5mm



■ Mounting Hole and Operating Characteristics

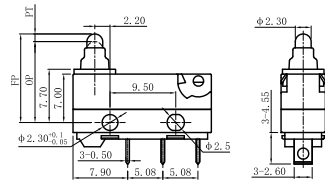
| Mounting Hole Dimension | Mounting Hole Dimension of PCB Terminals |
|---|--|
| <p>2-ϕ2.3mm mounting holes or M2.2 screw holes 9.50\pm0.15</p> | <p>3-ϕ1.35~1.5dia 2.60 9.50\pm0.15 2.55 5.08 5.08</p> |

■ Circuitry

| | SPDT | SPST-NC | SPST-NO |
|--|------|---------|---------|
| | | | |

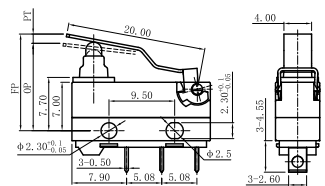
■ Dimensions and Operating Characteristics

◆ G9A□□-□□□S00AU



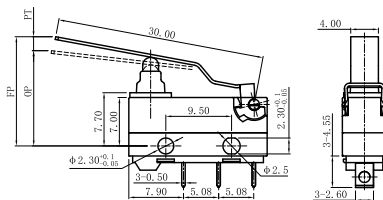
| OF Max. (gf) | RF Min. (gf) | PT Max. (mm) | OT Min. (mm) | DT Max. (mm) | FP Max. (mm) | OP (mm) |
|--------------|--------------|--------------|--------------|--------------|--------------|----------------|
| -200 | 200 | 20 | 1.7 | 2.2 | 0.9 | 13.0 |
| | | | | | | 11.7 \pm 0.4 |

◆ G9A□□-□□□S01AU



| OF Max. (gf) | RF Min. (gf) | PT Max. (mm) | OT Min. (mm) | DT Max. (mm) | FP Max. (mm) | OP (mm) |
|--------------|--------------|--------------|--------------|--------------|--------------|----------------|
| -200 | 200 | 20 | 2.9 | 2.2 | 1.0 | 14.5 |
| | | | | | | 12.6 \pm 0.8 |

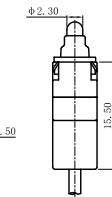
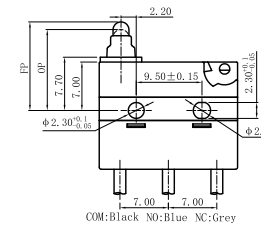
◆ G9A□□-□□□S02AU



| OF Max. (gf) | RF Min. (gf) | PT Max. (mm) | OT Min. (mm) | DT Max. (mm) | FP Max. (mm) | OP (mm) |
|--------------|--------------|--------------|--------------|--------------|--------------|----------------|
| -200 | 150 | 20 | 4.0 | 2.9 | 1.3 | 16.5 |
| | | | | | | 13.5 \pm 1.0 |

■ Dimensions and Operating Characteristics

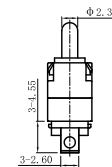
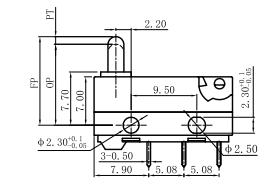
◆ G9A□□-□□□E00AU



| OF Max. (gf) | RF Min. (gf) | PT Max. (mm) | OT Min. (mm) | DT Max. (mm) | FP Max. (mm) | OP (mm) |
|--------------|--------------|--------------|--------------|--------------|--------------|----------------|
| -200 | 200 | 20 | 1.7 | 2.2 | 0.9 | 13 |
| | | | | | | 11.7 \pm 0.4 |

COM:Black NO:Blue NC:Grey

◆ G9B□□-□□□S00AU



| OF Max. (gf) | RF Min. (gf) | PT Max. (mm) | OT Min. (mm) | DT Max. (mm) | FP Max. (mm) | OP (mm) |
|--------------|--------------|--------------|--------------|--------------|--------------|----------------|
| -200 | 200 | 20 | 1.7 | 2.2 | 0.9 | 13.0 |
| | | | | | | 11.7 \pm 0.4 |