

## G10 Series

### Subminiature Micro Switch



#### Features

- ◆ Small compact size
- ◆ Long life and high reliability
- ◆ Variety of terminals
- ◆ Variety of levers optional
- ◆ Widely used in home appliances and industrial control

#### Application

- ◆ Walkie Talkie
- ◆ Mouse
- ◆ Electric Knife
- ◆ Electric Stapler
- ◆ Telephone
- ◆ Calculator
- ◆ Mixer & Chopper
- ◆ Electric Pan
- ◆ Battery Charger
- ◆ Video Cassette Rewinder
- ◆ Cordless Phone
- ◆ Alarm
- ◆ Tester Machine
- ◆ Home Appliances

#### Parameters:

Rating	P1	ENEC/CQC: 0.1A 48VDC/125VAC UL/cUL: 0.1A 48VDC/125VAC
	03	ENEC/CQC: 1A/3A 125VAC UL/cUL: 1A/3A 125VAC
Operating Frequency	Electrical	10~30 cycles/min
	Mechanical	120 cycles/min
Contact Resistance (Initial Value)		100mΩ Max. (Depends on P/N)
Insulation Resistance (at 500 VDC)		100MΩ Min.
Dielectric Strength	Between terminals	600VAC 50~60Hz for 1 Min.
	Between terminals and housing	600VAC 50~60Hz for 1 Min.
Operating Temperature		-40°C~+85°C
Operating Humidity		85%RH Max.
Service Life	Electrical	10,000/50,000 cycles (Depends on P/N)
	Mechanical	1,000,000 cycles
Unit Net Weight		About 0.5g (Straight PCB type without lever)

### G10 Series Micro Switch Ordering Instruction

G10	P1	150	S	00	A	XX	T001	U		
Switch Type	G10 Series Micro Switch		Terminal Type	Lever Type		Circuitry	Special Designator	Custom Code	LOGO	
	P1	03		S	P					A
Electrical Rating		Max Operating Force at Pin Plunger	Terminal Type		Circuitry		Special Designator		Custom Code	
ENEC/CQC: 0.1A 48VDC/125VAC UL/cUL: 1A/3A 125VAC P1 40T85 μ5E4 03 40T85 μ5E4		090 90gf Max 150 150gf Max	S Solder Terminals P Straight PCB Terminals Q Snap in PCB Terminals M Short Solder Terminals R Right Angled PCB Terminals L Left Angled PCB Terminals K Long Solder Terminals ... Special Terminals	00 No Lever Pin Plunger 01 10.56mm Short Straight Lever 0.41" 02 13.55mm Std. Straight Lever 0.53" 03 18.0mm Long Straight Lever 0.71" 05 11.8mm Simulated Roller Lever 0.46" 07 14.9mm Small Simulated Roller Lever 0.58" 09 30.0mm Long Straight Lever 10 12.80mm Roller Lever ... Special Lever	A SPDT	General A Gold Plated 00 Non-Halogen Material	General Customized according to requirements, the code format is T+serial number XXX, for example: T001 ... Other	U Unionwell ... Other		

## Terminal Type

◆ Terminal thickness: 0.6mm

S Type Straight Solder Terminals	P Type Straight PCB Terminals	Q Type PCB snap-in (clip) Terminals
M Type Short Solder Terminals	R Type Right Angled PCB Terminals	L Type Left Angled PCB Terminals
K Type Long Solder Terminals	■ Circuit Configuration	

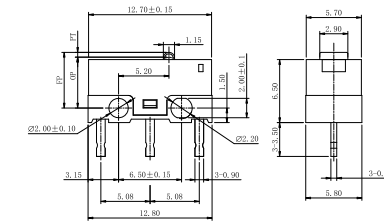
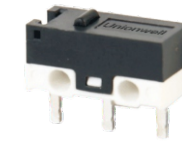
## Mounting Hole Dimensions

(Unit:mm)

Mounting Hole Dimensions	Mounting Hole Dimensions of PCB Terminals
Mounting Hole Dimensions of Right Angled PCB Terminals	Mounting Hole Dimensions of Left Angled PCB Terminals

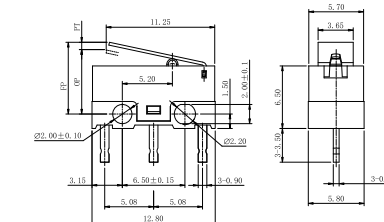
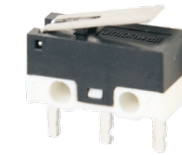
## Overall Dimensions and Operating Characteristics

### ◆ G10□□-□P00AU



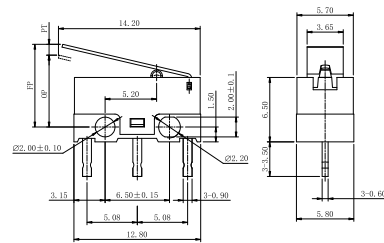
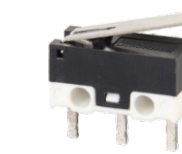
OF Max. (gf)	RF Min. (gf)	PT Max. (mm)	OT Min. (mm)	DT Max. (mm)	FP Max. (mm)	OP. (mm)
-090	90	15	0.65	0.2	0.2	6.0
-150	150	20				5.5±0.3

### ◆ G10□□-□P01AU



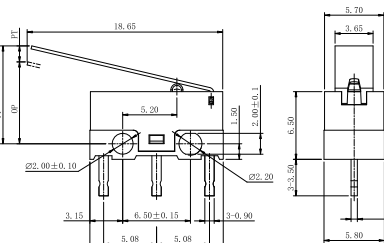
OF Max. (gf)	RF Min. (gf)	PT Max. (mm)	OT Min. (mm)	DT Max. (mm)	FP Max. (mm)	OP. (mm)
-090	40	6	2.5	0.3	0.6	8.0
-150	60	10				6.25±0.8

### ◆ G10□□-□P02AU



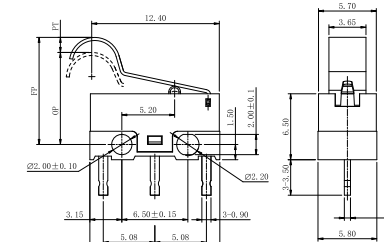
OF Max. (gf)	RF Min. (gf)	PT Max. (mm)	OT Min. (mm)	DT Max. (mm)	FP Max. (mm)	OP. (mm)
-090	30	4	3.4	0.3	0.8	8.8
-150	50	8				6.35±0.9

### ◆ G10□□-□P03AU



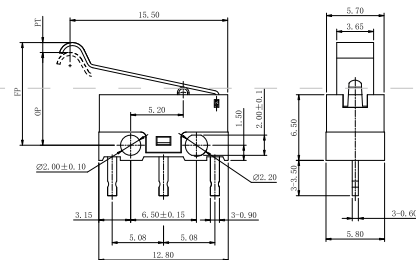
OF Max. (gf)	RF Min. (gf)	PT Max. (mm)	OT Min. (mm)	DT Max. (mm)	FP Max. (mm)	OP. (mm)
-090	40	3	4.0	0.5	1.0	10.0
-150	50	5				7.5±1.5

### ◆ G10□□-□P05AU



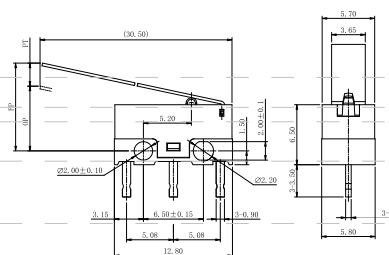
OF Max. (gf)	RF Min. (gf)	PT Max. (mm)	OT Min. (mm)	DT Max. (mm)	FP Max. (mm)	OP. (mm)
-090	40	5	3.0	0.3	0.7	12.0
-150	50	8				9.5±0.8

## ◆ G10□□-□P07AU



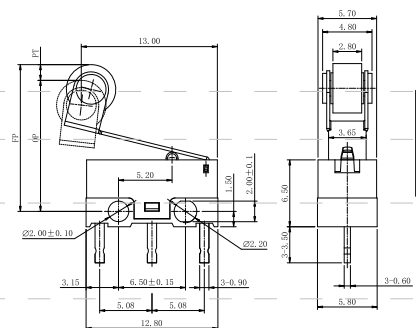
OF Max. (gf)	RF Min. (gf)	PT Max. (mm)	OT Min. (mm)	DT Max. (mm)	FP Max. (mm)	OP (mm)
-090	30	5	3.5	0.3	1.1	11.5
-150	50	8				8.2±1.0

## ◆ G10□□-□P09AU



OF Max. (gf)	RF Min. (gf)	PT Max. (mm)	OT Min. (mm)	DT Max. (mm)	FP Max. (mm)	OP (mm)
-090	15	2	6.9	0.4	2.5	14.0
-150	23	3				8.2±2.1

## ◆ G10□□-□P10AU



OF Max. (gf)	RF Min. (gf)	PT Max. (mm)	OT Min. (mm)	DT Max. (mm)	FP Max. (mm)	OP (mm)
-090	35	3	5.5	0.3	0.8	16.5
-150	50	6				13.0±1.3