

**G10A Series**

**Subminiature Micro Switch (Spring-Loaded Structure)**



**■ Features**

- ◆ Small compact size
- ◆ Long life and high reliability
- ◆ Variety of terminals
- ◆ Variety of levers optional
- ◆ Widely used in home appliances and industry control

**■ Application**

- ◆ Mouse
- ◆ Electric Knife
- ◆ Electric Stapler
- ◆ Telephone
- ◆ Calculator
- ◆ Mixer & Chopper
- ◆ Battery Charger
- ◆ Cordless Phone
- ◆ Alarm
- ◆ Cleaner
- ◆ Home Appliances

**■ Operating Parameters**

Rating	P1	0.1A 125/250VAC 30VDC
	03	3A 125/250VAC 30VDC
Operating Frequency	Electrical	10~30 cycles/min
	Mechanical	120 cycles/min
Contact Resistance (Initial Value)		100mΩ Max.
Insulation Resistance (at 500 VDC)		100MΩ Min.
Dielectric Strength	Between terminals	600VAC 50~60Hz for 1 Min.
	Between terminals and housing	1,000VAC 50~60Hz for 1 Min.
Operating Temperature		-40°C~ +85°C
Operating Humidity		85% RH Max.
Service Life	Electrical	10,000 cycles
	Mechanical	1,000,000 cycles

G10A	03	150	S	01	A	T001	U
Switch Type	Electrical Rating	Max Operating Force at Pin Plunger	Terminal Type	Lever Type	Circuitry	Custom Code	LOGO
Switch Type	ENE/CQC: 0.1A 125/250VAC P1 40T85 μ 1E4 UL/cUL: 0.1A 30VDC 40T85 μ 1E4	90 90gf Max.	S Standard Solder Terminals	00 No Lever Pin Plunger	A SPDT	General	U Unionwell
	ENE/CQC: 3A 125/250VAC 03 40T85 μ 1E4 UL/cUL: 3A 30VDC 40T85 μ 1E4	150 150gf Max.	P Standard Straight PCB Terminals	01 10.55mm Short straight lever	B SPST-NC	Customized according to requirements, the code format is T+serial number XXX for example:T001	Other
			Q Snap-in PCB Terminals	02 13.55mm Standard straight lever	C SPST-NO		
			M Short Solder Terminals	03 18.00mm Long straight lever			
			R Right Angled PCB Terminals	05 11.80mm Simulated roller lever			
			L Left Angled PCB Terminals	07 14.90mm Small simulated roller lever			
			K Long Solder Terminals	08 30.00mm Long straight lever			
			... Special Terminals	10 12.80mm Roller lever			

Terminal Type

Terminal thickness: 0.4mm

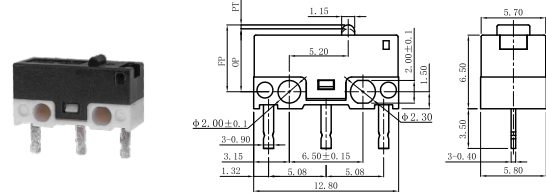
S Type Straight Solder Terminals	P Type Straight PCB Terminals	Q Type PCB snap-in(clip) Terminals
M Type Short Solder Terminals	R Type Right Angled PCB Terminals	L Type Left Angled PCB Terminals
K Type Long Solder Terminals	Circuit Configuration	

Mounting Hole Dimension

Mounting Hole Dimension	Mounting Hole Dimension of PCB Terminals
Mounting Hole Dimension of Right Angled PCB Terminals	Mounting Hole Dimension of Left Angled PCB Terminals

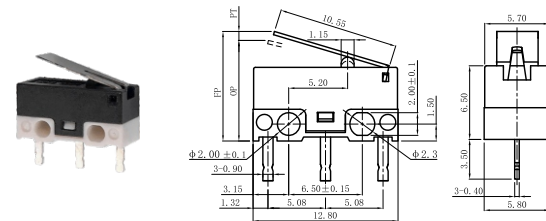
Overall Dimensions and Operating Characteristics

G10A□□-□P00AU



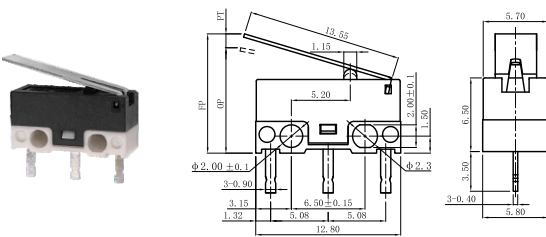
OF Max. (gf)	RF Min. (gf)	PT Max. (mm)	OT Min. (mm)	DT Max. (mm)	FP Max. (mm)	OP (mm)	
-150	150	20	0.65	0.2	0.2	6.0	5.5±0.3

G10A□□-□P01AU



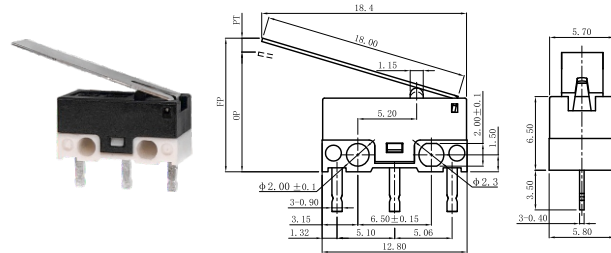
OF Max. (gf)	RF Min. (gf)	PT Max. (mm)	OT Min. (mm)	DT Max. (mm)	FP Max. (mm)	OP (mm)	
-150	60	10	2.5	0.3	0.6	9.0	6.65±0.9

G10A□□-□P02AU



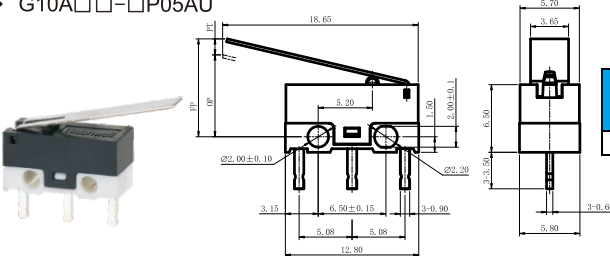
OF Max. (gf)	RF Min. (gf)	PT Max. (mm)	OT Min. (mm)	DT Max. (mm)	FP Max. (mm)	OP (mm)	
-150	50	8	3.4	0.3	0.8	9.5	7.0±1.2

G10A□□-□P03AU



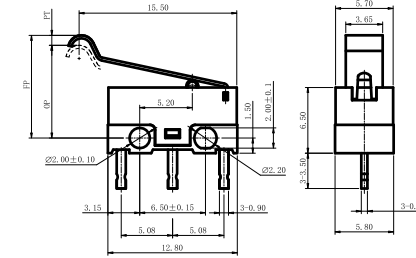
OF Max. (gf)	RF Min. (gf)	PT Max. (mm)	OT Min. (mm)	DT Max. (mm)	FP Max. (mm)	OP (mm)	
-150	50	5.0	4.0	0.5	1.0	10.0	7.5±1.5

G10A□□-□P05AU



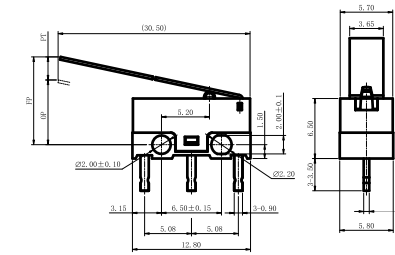
OF Max. (gf)	RF Min. (gf)	PT Max. (mm)	OT Min. (mm)	DT Max. (mm)	FP Max. (mm)	OP (mm)	
-150	50	5.0	4.0	0.5	1.0	10.0	7.5±1.5

G10A□□-□P07AU



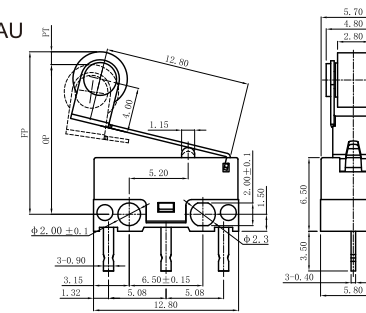
OF Max. (gf)	RF Min. (gf)	PT Max. (mm)	OT Min. (mm)	DT Max. (mm)	FP Max. (mm)	OP (mm)	
-150	50	8	3.5	0.3	1.1	11.5	8.2±1.0

G10A□□-□P09AU



OF Max. (gf)	RF Min. (gf)	PT Max. (mm)	OT Min. (mm)	DT Max. (mm)	FP Max. (mm)	OP (mm)	
-150	23	3	6.9	0.4	2.5	14.0	8.2±2.1

G10A□□-□P10AU



OF Max. (gf)	RF Min. (gf)	PT Max. (mm)	OT Min. (mm)	DT Max. (mm)	FP Max. (mm)	OP (mm)	
-150	50	6	5.5	0.3	0.8	16.5	13.0±1.5