



紫洋兴  
ZIYANGXING

COMMERCIAL GRADE  
VEHICLE CAMERA SOLUTIONS  
MDVRs | Monitors | Cameras | Accessories

IATF16949 / ISO9001 / E-mark / CE / FCC / ROHS / REACH

# ADVANCED SAFETY VISION SYSTEMS

4G



Wireless

1080P  
HD



IP68  
WEATHERPROOF

10/35V  
COMPATIBLE



[www.zyxcarmonitor.com](http://www.zyxcarmonitor.com)

CATALOGUE

# Company Profile

Founded in 2014, Shenzhen Ziyangxing Technology Co. Ltd. is a leading high-tech enterprise specializing in research, development, and manufacturing of automotive safety systems.

## Production Capacity

6 SMT machines, 4 assembly lines, and over 100 skilled workers

## Quality Control

ISO9001:2015, IATF16949:2016, E-Mark, CE, ROHS, FCC, Reach, IP68



**100+**  
Hardworking  
Employees



**15+**  
Professional  
R&D Team



**3000+**  
Factory Area

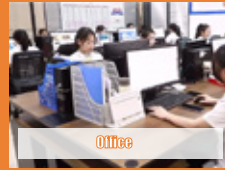


**50+**  
Countries  
Served

## Background Of The Factory



Office



Office



Engineer



Sample Display



Assembly Workshop



Warehouse



SMT Workshop



Chip Cleaning



Camera Focus Adjustment



Waterproof Potting Process



Waterproof Test



Vibration Test



High-low Temperature Test



Quality Test



Aging Test

## Certifications





We specialize in the R&D, manufacturing, and sales of vehicle-mounted safety and monitoring solutions. Our focus is on delivering advanced camera systems and comprehensive wired and wireless solutions, including MDVRs (Mobile Digital Video Recorders), dashcams, heavy-duty commercial-grade monitors, cameras, and professional accessories.

Equipped with industry-leading technologies, our products ensure superior performance: AHD (Analogue High Definition) provides crystal-clear imaging, while AI-powered Human Detection enables intelligent and accurate identification. Designed to operate reliably in harsh environments, our cameras feature IP68-rated protection, silicone potting, and conformal-coated PCBs, ensuring exceptional durability, weather resistance, and long-term reliability.

We offer a full range of camera solutions—including front, side, rear-view, and reversing cameras—in both wired and wireless configurations. Compatible with 12–24V DC vehicle power supplies, our products are suitable for a wide variety of vehicles and applications: 4x4s, cars, vans, motorhomes, buses, trucks, semi-trailers, trailers, caravans, horse floats, forklifts, agricultural vehicles, heavy machinery, tractors, and more.

From R&D to after-sales support, we provide one-stop services and tailored solutions that enhance vehicle safety, operational efficiency, and intelligent monitoring.

## PRODUCT CATALOG

**02 - Edge Computing Terminal**

**03~04 - MDVR**

**05 - AI DASHCAM**

**06- Smart Camera**

**07 - Explosion-proof Camera System**

**08- 3D 360° Surrond View Camera System**

**09 - Wired Rear View Camera System**

**10 - Electronic Rear View Mirror**

**11 - Wireless Dual Monitor System**

**12 - Wireless BSD Camera System**

**13 - Wireless Forklift Camera System**

**14 - Wireless Solar Camera System**

**15 - Wireless 30X Zoom Camera System**

**16 - Wireless License Plate Camera System**

**17 - WIFI Solar Camera**

**18 - Baby Monitor In Car**

**19~27 - HD Cameras**

**28~31 - HD Monitor**

**32 - Accessories**

# Edge Computing Terminal

AI

AI

Max:2T SSD



GPS/5G/WIFI



2T SSD



(UM981)  
High-precision



(40T)  
Intelligent Algorithm



H.265/H.264



G-Sensor



HDMI



DC 10-36V



IP54



3CH POE

## Product Overview

The T90 Edge computing terminal adopts NVIDIA Orin series modules, supporting a maximum of 40T INT8 computing power. It accepts 3-channel video input via 3 dedicated POE interfaces and can expand multiple IPC inputs through an Ethernet HUB. The terminal integrates a high-precision positioning inertial navigation module, 5G, WiFi, and other modules, along with a built-in 2T SSD. Built-in super capacitor: Prevents device restart during instantaneous power failure (which may occur during vehicle collision) to effectively ensure video recording integrity. It also provides data protection in case of abnormal power failure. It supports wide-voltage input for vehicles, offers abundant external interfaces, and uses dedicated aviation connectors for connection. Supports operation and maintenance settings via mobile APP. With excellent vibration resistance, its all-metal chassis design is highly suitable for vehicle-mounted environments.

- 3 dedicated POE aviation interfaces, supporting 3-channel audio and video input; expandable to multiple channels.
- Built-in maximum 40T computing power.
- Built-in 2T SSD solid-state drive.
- Built-in high-precision inertial navigation positioning module (UM981), supporting RTK high-precision positioning with a maximum output frequency of 20HZ.
- Built-in 5G communication module/WiFi/G-Sensor.
- Abundant external interfaces: 1 HDMI output, 2 USB external interfaces, 1 RJ45 external Ethernet port, 1 RS232, 1 RS485, 1 CAN, and 4 IO ports.
- 8-36V wide voltage input.
- Independent on/off control for external 12V power output.
- Built-in super capacitor: Prevents device restart during instantaneous power failure (which may occur during vehicle collision) to effectively ensure video recording integrity. It also provides data protection in case of abnormal power failure.
- Supports operation and maintenance settings via mobile APP.

# MDVR



GPS/4G/WIFI



DMS



ADAS



BSD



Remote Monitoring



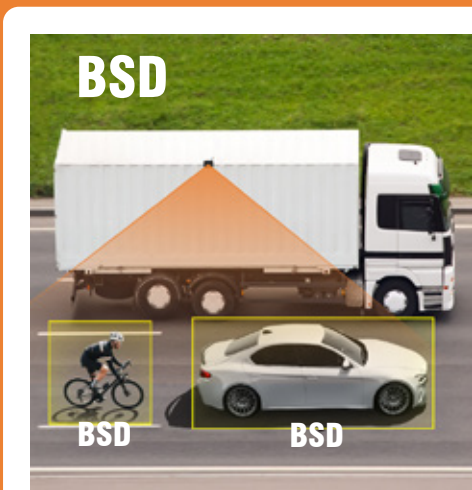
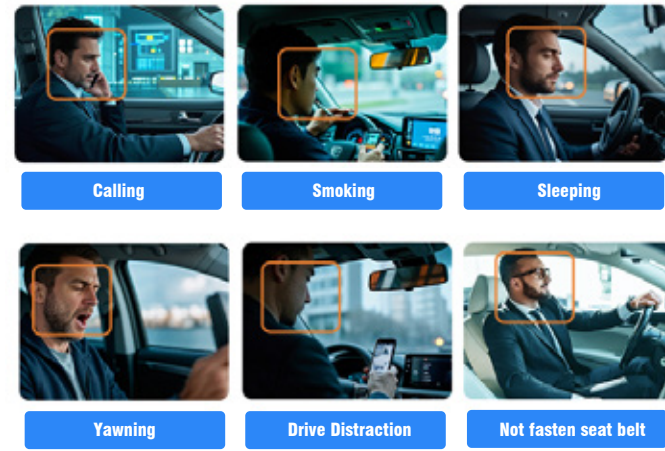
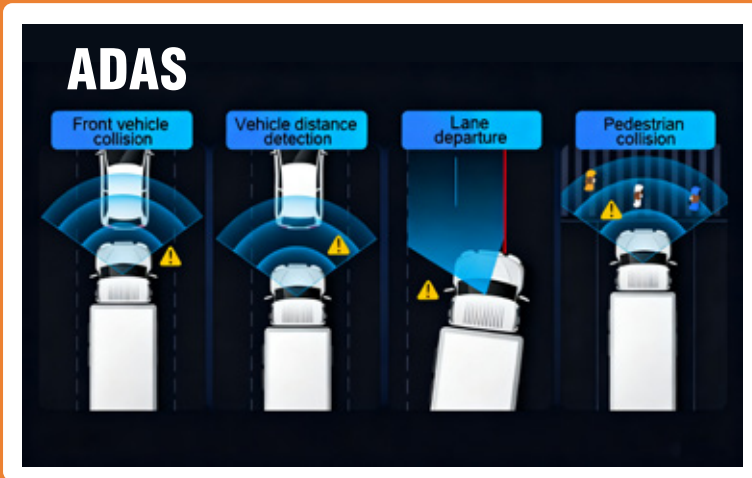
Io Alarm



H.265/H.264



1CH IPC  
4CH 1080P





**MDVR-HDD**  
**Max:2T HDD+1T SD**



**MDVR-SD**  
**Max:2\*1T SD**



**MDVR-TF**  
**Max:256G TF**

**Feature:**

1. Operating System: Embedded Linux
2. Support multiple languages
3. 4-CH audio and video input and 2CH audio and video output
4. Built-in GPS/Beidou dual-mode positioning module/GLONASS
5. Support 4G and WiFi
6. Simultaneously support 4-CH safety warnings (ADAS/BSD/DMS can be configured arbitrarily)
7. AI Capability: 1.5T computing power
8. Compression Standard: H.264/265
9. Live Resolution: 1080P/720P/D1
10. Recording Resolution: 1080P, 720P, D1, CIF
11. Playback Quality: 1080P/720P/D1/CIF
12. Video Standard: PAL/NTSC
13. Alarm Input: one high input, one low input
14. Alarm Output: one output (12V or 5V)
15. Serial Port: 1 RS232
16. One LAN port
17. Voice Intercom: 1 channel, supports duplex and group intercom
18. USB Interface: 1 USB 2.0 (supports USB to Wi-Fi adapter for debugging)
19. Power Consumption: <10W
20. Operating Temperature: -20°C to +75°C

**Feature:**

1. Compact design, saving installation space output
2. 4-CH audio and video input and 2CH audio and video output
3. Supports 1 TF card (max 256G) for loop recording
4. Built-in positioning module, compatible with GPS/Beidou dual-mode
5. Built-in 4G module/WIFI/G-Sensor
6. Built-in 1.5T computing power, enabling 4-channel BSD, ADAS & DMS functions
7. 1 RS232 interface
8. Built-in super capacitor

**CMS Fleet Management Platform**



• PC Application

• IOS/Android Application



GPS



4G/WIFI



AI MDVR System



(CMS Server)



PC&Mobile CMS

# AI DASHCAM

Integrated Dual Lens ADAS/DMS



AI Dashcam



GPS/4G/WIFI



SOS Panic Button



Front 1080P + 1080P



Dual Channel Recording



Remote Monitoring



Night Vision



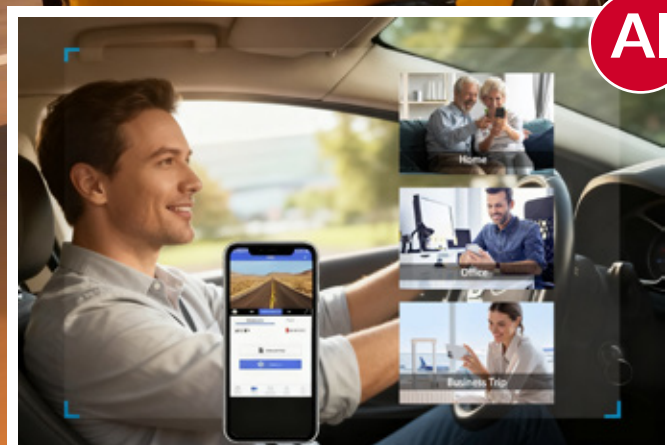
H.264



DMS

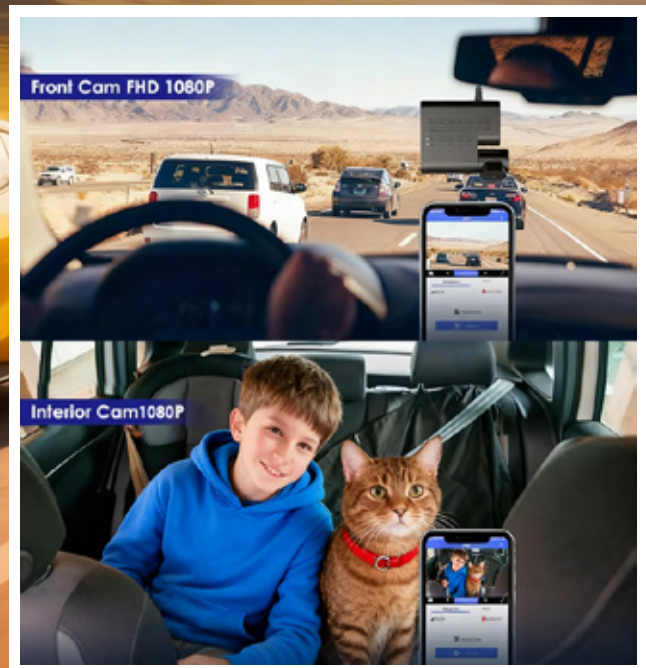


ADAS



AI

Remote monitoring anytime, anywhere—no worries



## Product Overview

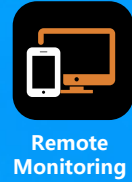
This device comes with dual lenses (1080P+1080P) and supports 4G/GPS/WIFI connectivity, integrating ADAS/DMS functions and AI alarm video upload. It offers RS232/RS485 serial ports for peripheral expansion and 1CH CAN interface, while enabling remote real-time positioning, track playback, and real-time video viewing/playback. Additionally, it is equipped with one alarm input, one alarm output, and one emergency alarm button for comprehensive usage needs.

# SMART CAMERA

4G GPS WIFI



GPS/4G/WIFI



Remote Monitoring



H.265



RS485



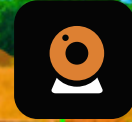
BSD



DMS



Night Vision



1080P



9-36V



Smart Camera



Remote monitoring anytime, anywhere—no worries



## Features

- 4G function, compatible with regional-specific modules for Asia, Europe, the Americas and beyond
- GPS/Beidou dual-mode
- Supports 9~36V wide voltage design, applicable to various vehicle models;
- Power failure alarm, undervoltage alarm, low battery protection, delayed shutdown, scheduled power on/off, and intelligent power protection;
- Supports two-way intercom
- Supports WiFi 2.4G;
- Real-time audio and video preview and storage, local/remote video playback;
- 1080P high-performance image processing chip, H.265 encoding, high compression ratio and clear images;
- Built-in G-sensor for real-time monitoring of vehicle driving behavior;
- Supports 485 connection to external sensors, such as: fuel level sensor, ultrasonic sensor, temperature and humidity sensor, load sensor, etc.;
- Supports Yunguanbao (Operation and Maintenance Treasure) debugging and maintenance;
- Built-in 2 super capacitors to protect data from abnormal power failure;
- AI intelligent algorithms: human detection, custom area intrusion alarm; fatigue detection alarm, driver identification, yawning, smoking, making phone calls, not wearing a seat belt, driver looking around.

# EXPLOSION-PROOF CAMERA SYSTEM



10.1-inch



IP68



Quad display



Touch function



Loop recording



Explosion-proof



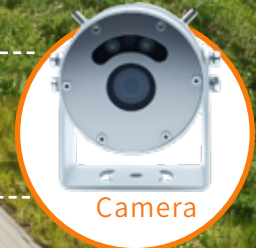
Metal material durable



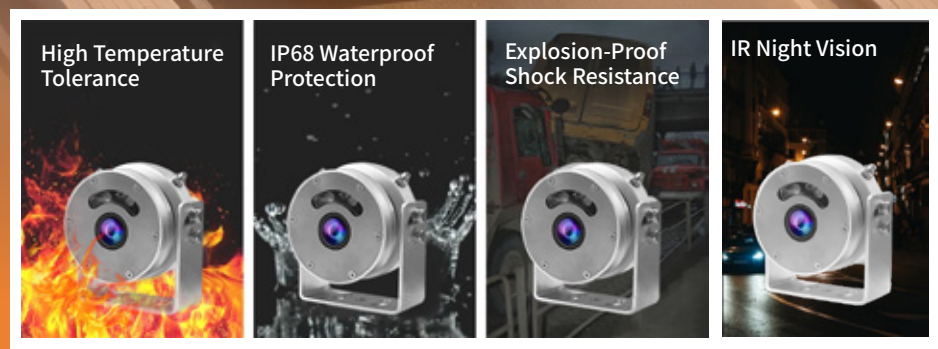
Heat Resistant



Night Vision



- Touch function
- IP68 waterproof



Waterproof Monitor	
Screen:	10-inch IPS LCD
Resolution:	1024*600
Operatin Voltage:	DC10-35V
Brightness:	500cd/m2
Aspect Ratio:	16:9
Channel:	Max 4CH
Display Mode:	Single/Split/Quad
Storage:	Micro SD Card,Max 512G
Waterproof Rating:	IP68
Working temperature:	-20~70°C

Explosion-Proof Camera	
Resolution:	1920*1080P
Voltage:	DC12V
Min Illumination:	0LUX
Infrared Distance:	5-20m
View Angle:	115°
Housing Material:	Stainless Steel/Aluminum Alloy
Waterproof Rating:	IP68
Working Temperature:	-20~70°C
Storage temperature:	-30~80°C
White Balance:	Auto

# 3D 360° SURROUND VIEW CAMERA SYSTEM



10.1-inch



360°-degree panorama



Touch function



IP68



4CH-BSD



1080P HD



BSD



Camera



Camera



Camera



Camera



Monitor



BSD



Reverse parking



Parallel parking



Narrow streets



Congested roads



Full coverage of blind spots



Car turning

## Features

- 6CH 1080P high definition fish eye camera input
- Wide voltage DC9-36V
- 3-channel triggers: 1-channel backward trigger, 1-channel left trigger, 1-channel right trigger
- 1-channel AHD video output
- 10.1-inch waterproof touchscreen display
- Built-in AI algorithm, integrated with LDW+FCW+both sides BSD 360 degree detection
- Automatic calibration can be finished in 1 minute, and it supports automatic plane correction
- Multiple viewing models, 3D/2D view switching freely
- Applications: Special vehicles, various trucks, lorries, tanks, and construction vehicles

# WIRED REAR VIEW CAMERA SYSTEM



Quad display



4CH-BSD



Long recording



Video Play



TF/256G



Parking Monitoring



Monitor



Camera



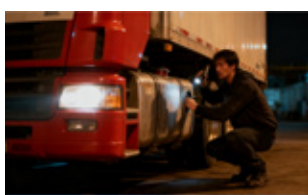
Camera



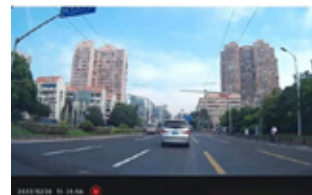
360-Degree Monitoring With No Blind Spots



Loop Recording



Parking Monitor



Video Playback

## Monitor

Screen:	7-inch IPS LCD
Resolution:	1024*600
Voltage:	DC10-35V
Brightness:	500cd/m2
Aspect Ratio:	16:9
Channel:	Max 4CH
Display Mode:	Single/Split/Quad
Storage:	Micro SD Card,Max 256G
Waterproof Rating:	IP68
Working temperature:	-20~70°C
Function:	Loop Recording, Parking Monitoring

## Camera

Resolution:	1920*1080P
Voltage:	DC12V
Min Illumination:	0LUX
Infrared Distance:	5-12m
View Angle:	115°
Housing Material:	Metal
Waterproof Rating:	IP68
Working Temperature:	-20~70°C
Storage Temperature:	-30~80°C
White Balance:	Auto

# ELECTRONIC REAR VIEW MIRROR



10.36-Inch



2CH-BSD



Long recording



Video Play



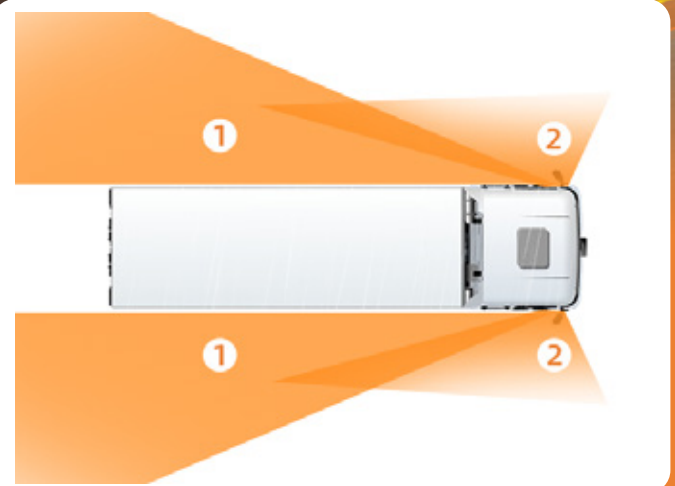
TF/128G



Night Vision



- 1: Image viewed backward
- 2: Image viewed downward



## Monitor

Screen:	10.36 inch IPS
Resolution:	720 RGB (H) x 1600 (V)
Viewing Range:	239mm(H) x 107mm (V)
Video Input:	AHD 1080P
Brightness:	850cd/m2
Contrast Ratio:	800:01
Operation Method:	Touch
Voltage:	DC 12V-24V
Operating Temperature:	-20°C~70°C
Storage Temperature:	-30°C~80°C
Storage:	Micro TF Card,Max 128G

## Camera

Imaging Sensor:	1/2.9"
Signal System:	PAL/NTSC (optional)
Image Pixels:	1920 (H) x 1080 (V)
Automatic Gain Control (AGC):	Automatic
Backlight Compensation:	Automatic
Electronic Shutter:	Automatic
View Angle:	120°
Video Port:	1 Vp-p, 75Ω,AHD
Mirroring:	Available
Noise Reduction:	3D
Voltage:	12V DC±10%
Current:	130mA(Max)
Operating Temperature:	-20~70°C
Waterproof Rating:	IP68

# WIRELESS DUAL MONITOR SYSTEM

Transmission distance reached 450M



Dual Monitor



5.8G Stable Transmission



1080P HD



IPS



Long Distance 450m



Night Vision



Main Monitor



Wireless Camera



2.4G

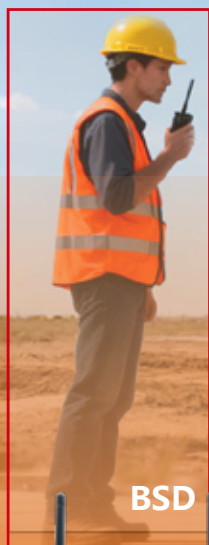


Secondary Monitor

## Product Overview

This system consists of two monitors and wireless HD cameras, allowing one camera to be connected to two monitors simultaneously. With this setup, users can place the monitors in different positions, such as inside the cabin or outside the vehicle, to observe the working environment from multiple angles in real time. It supports high-definition video and stable long-range transmission, and is widely applicable to agricultural machinery, engineering vehicles, trucks, and more. The system offers flexible installation and easy operation, greatly enhancing both safety and working efficiency.

# WIRELESS BSD CAMERA SYSTEM



Transmission distance: 350M



## Product Overview

Large trucks and construction machinery have significant blind spots, which have led to frequent and often serious accidents, especially in urban environments. Older generations of wireless AI systems often suffered from unstable signals, limiting their reliability in real-world conditions. In response to these challenges, our AI-powered vehicle camera system was developed to provide stable, intelligent monitoring and real-time alerts—enhancing safety for both drivers and pedestrians.

# 7-INCH WIRELESS BSD FORKLIFT SYSTEM



Quad display



4CH-BSD



2.4G Table transmission



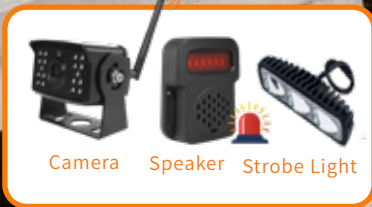
IP67



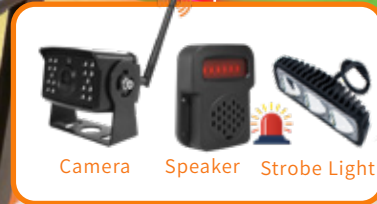
Laser



Easy magnetic installation



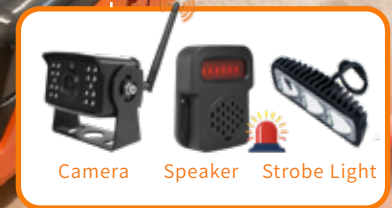
Camera Speaker Strobe Light



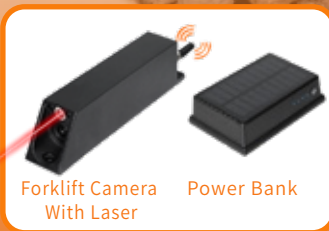
Camera Speaker Strobe Light



Monitor In-car reminder



Camera Speaker Strobe Light



Forklift Camera With Laser Power Bank

## 01

### Solve the blind spot problem

Can help drivers avoid collision with goods to remind others away from the forklift, avoid collision.



## 02

### Laser positioning

Accurate operation of the built-in laser positioning line, a perfect solution to the driver operation of the lift is not accurate and cargo damage.



## 03

### Loop recording

Save storage space, improve machine utilization, recording per second.



## 04

### IP67 Rated

Waterproof, shockproof, dustproof, shockproof, durable, suitable for forklift work.



## Wireless Monitor

Screen:	7-inch IPS LCD
Resolution:	1024*600
Operatin Voltage:	DC10-35V
Brightness:	500cd/m2
Aspect Ratio:	16:9
Channel:	Max 2CH
Display Mode:	Single/Split/Quad
Operating Frequency:	2403-2480 MHZ
Storage:	Micro SD Card, Max 128G
Waterproof Rating:	IP67
Working temperature:	-20~70°C

## Wireless Camera

Resolution:	1280*720
View Angle:	DC12V
Min Illumination:	0LUX
Night Vision distance:	5-10m
View Angle:	120°
Image Mode:	Mirror/Normal
Housing Material:	Metal
Operating Frequency:	2403-2480 MHZ
Waterproof Rating:	IP67
Working temperature:	-20~70°C
Storage temperature:	-30~80°C

# WIRELESS SOLAR CAMERA SYSTEM

Transmission distance reached 300M



7-inch



Loop recording



2.4G Table transmission



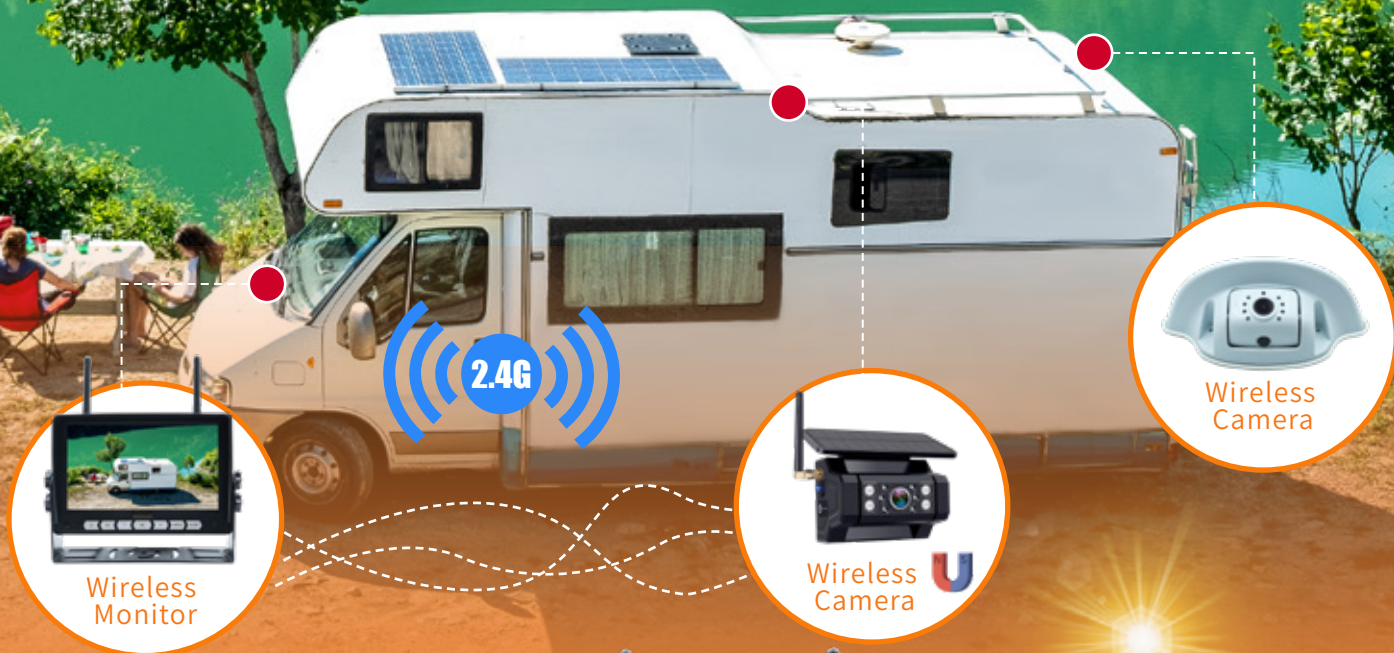
Solar charging



Easy magnetic installation



IP68



Wireless Monitor

Wireless Camera

Wireless Camera



## Wireless Monitor

Screen:	7-inch IPS LCD
Resolution:	1024*600
Operatin Voltage:	DC10-35V
Brightness:	500cd/m2
Aspect Ratio:	16:9
Channel:	Max 2CH
Display Mode:	Single/Split/Quad
Operating Frequency:	2403-2480 MHZ
Storage:	Micro SD Card,Max 128G
Waterproof Rating:	IP68
Working temperature:	-20~70°C

## Wireless Camera

Resolution:	1280*720
Battery Capacity:	3.7V/9600mA
Charging Voltage:	5V/2A
View Angle:	140 degree
Mounting Method:	Strong Magnet
Working time:	15-28 hours on a full charge
Battery Cycle Life:	800 cycles
Operating Frequency:	2403-2480 MHZ
Waterproof Rating:	IP68
Working temperature:	-20~70°C
Storage temperature:	-30~80°C

# WIRELESS 30X ZOOM CAMERA SYSTEM

Transmission distance reached 450M



30XZoom



Easy magnetic installation



1080P HD



8000 mA



Long Distance 450m



IP68



1X

30X

## Wireless Monitor

Screen:	10.1-inch IPS LCD
Resolution:	1024*600
Operatin Voltage:	DC10-35V
Brightness:	600cd/m2
Aspect Ratio:	16:9
Contrast:	800:1
Display Mode	Single/Split/Quad
2.4G Wireless Transmission Distance	Open distance 450m
Operating Frequency:	2403-2480MHz
Storage:	Micro SD Card,Max 128G
Maximum Current:	<1A
Waterproof Rating:	IP68
Working temperature:	-20~70°C

## Zoom Camera

Sensor:	1/2.7 CMOS
Effective Pixel:	1920H*1080V
Focusing Mode:	Automatic focus
Focus Length:	4.7~141mm
F Number:	F1.5 (Wide) ~ F4.0 (Tele)
Focus Range:	Wide: 0.1m ~ INF; Tele: 1.5m ~ INF
Field of View Angle:	Wide: 69.5°, 60.5°, 35.1°; Tele: 2.7°, 2.3°, 1.3°l
Night Vision Range:	30m
Operating Voltage:	DC 12-35V
Maximum Current:	<400mA
Magnification Range:	1-30x (50x Optional)
Waterproof Rating:	IP68
Working temperature:	-20~70°C

# WIRELESS LICENSE PLATE CAMERA SYSTEM



5-inch



Dual display



2.4G Stable transmission



Loop recording



Night Vision



Wide Angle



## Wireless Monitor

Screen:	5-inch IPS LCD
Resolution:	800*480
Operatin Voltage:	DC10-35V
Brightness:	500cd/m2
Aspect Ratio:	10:09
Channel:	Max 2CH
Display Mode:	Single/Split
Operating Frequency:	2403-2480 MHZ
Storage:	Micro SD Card,Max 128G
Waterproof Rating:	IP68
Working temperature:	-20~70°C

## Wireless Camera

Resolution:	1280*720
View Angle:	140 degree
Min Illumination:	0LUX
Night Vision distance:	5-10m
Image Mode:	Mirror/Normal
Operating Frequency:	2403-2480 MHZ
Waterproof Rating:	IP68
Working temperature:	-20~70°C
Storage temperature:	-30~80°C

## ZY-W727

### Wireless Rear View Camera System



#### Wireless Monitor

- Screen: 7-inch IPS LCD
- Resolution: 1024\*600
- Operatin Voltage: DC10-35V
- Brightness: 500cd/m2
- SAspect Ratio: 16:9
- Channel: Max 4CH
- Display Mode: Single/Split/Quad
- Operating Frequency: 2403-2480 MHZ
- Storage: Micro SD Card,Max 128G
- Housing Material: Plastic
- Working temperature: -20~70°C

#### Wireless Camera

- Resolution: 1280\*720
- Voltage: DC12V
- Min Illumination: 0LUX
- Infrared distance: 5-10m
- View Angle: 120°
- Image Mode: Mirror/Normal
- Housing Material: Metal
- Operating Frequency: 2403-2480 MHZ
- Waterproof Rating: IP68
- Working temperature: -20~70°C
- Storage temperature: -30~80°C

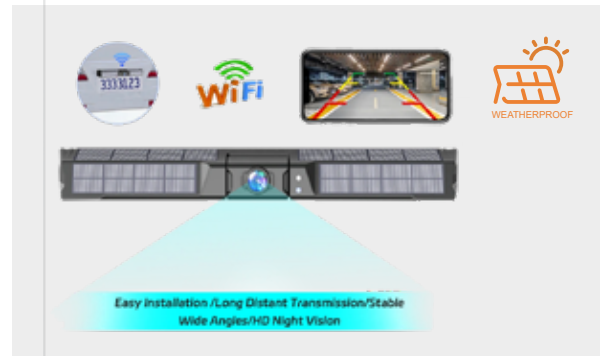


## ZY-WA31

### Wifi Solar Camera

Support Both Android & iOS

- Resolution: 1280\*720
- Battery Capacity: 3.7V/9600mA
- Charging Voltage: 5V/2A
- View Angle: 140 degree
- Mounting Method: Strong Magnet
- Working time: 15 hours on a full charge
- Battery Cycle Life: 800 cycles
- Transmission Distance: 50M in the open space
- Waterproof Rating: IP68
- Working temperature: -20~70°C
- Storage temperature: -30~80°C



## ZY-WA27

### Wifi Solar Camera

Support Both Android & iOS

- Resolution: 1280\*720
- Battery Capacity: 3.7V/9000mA
- Charging Voltage: 5V/2A
- View Angle: 140 degree
- Mounting Method: Strong Magnet
- Working time: 15 hours on a full charge
- Battery Cycle Life: 800 cycles
- Transmission Distance: 50M in the open space
- Waterproof Rating: IP68
- Working temperature: -20~70°C
- Storage temperature: -30~80°C

# ADVANCED SAFETY VISION SYSTEMS > BABY MONITOR IN CAR

7"



## Monitor

Screen Size: 7-inch / 6.86-inch / 5-inch / 4.3inch  
 Screen Resolution: 1024\*600 / 600\*1280 / 480\*272  
 Voltage of moitor: DC 9-24V  
 Input Signal: AHD/CVBS  
 Channel: Max 2CH  
 Display Mode: Single / Split  
 Operating Temperature: -20~70°C  
 Power Consumption: Less than 2A  
 Language: Chinese, English, Korean, Japanese, Russian  
 French, etc.

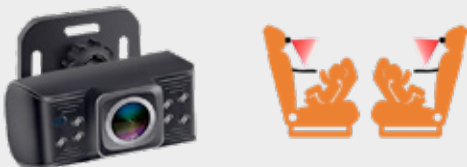
6.86"



## Camera

Image Sensor: 1/4.5CMOS  
 Resolution: 1280(H)\*720(V)  
 Minimum Illumination: OLUX  
 Power Supply: DC5V(+20%)-300mA(+20 \)  
 Fixed Aperture Lens: 2.8mm million HD lenses  
 Night vision: 940nm invisible LEDs  
 Viewing Angle: 120 degrees  
 Video output: AHD/CVBS  
 Video format: PAL NTSC  
 Signal to Noise Ratio:36dB  
 Operating temperature: -20° C ~+70° C

4.3"



## Suitable for most car models



# CAMERAS

REAR VIEW

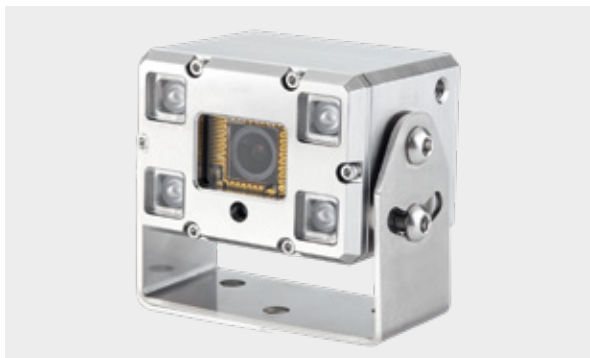
SIDE VIEW

IN-CABIN

AI



**ADVANCED SAFETY  
VISION SYSTEMS**



## ZY-C725

### Auto-heating Camera

Resolution: AHD 1080P/720P

Voltage: DC 12V

Minimum Illumination: 0.01 Lux

IR Distance: 5-10 m

Viewing Angle: 120°

Image Mode: Mirror / Normal

Housing Material: 304 Stainless Steel

Image Mode: Mirror/Normal

Waterproof Rating: IP68

Operating Temperature: -20°C ~ 70°C

Storage Temperature: -30°C ~ 80°C



## ZY-C726

### Auto-heating Camera

Resolution: AHD 1080P/720P

Voltage: DC 12V

Minimum Illumination: 0.01 Lux

Viewing Angle: 120°

Image Mode: Mirror / Normal

Housing Material: 304 Stainless Steel

Image Mode: Mirror/Normal

Waterproof Rating: IP68

Operating Temperature: -20°C ~ 70°C

Storage Temperature: -30°C ~ 80°C

## Heavy-duty Forklift & Loader-exclusive HD Camera | 304 Stainless Steel, 2MP Resolution, Night Vision & Auto Defogging Heating

- 2MP Auto-heating Camera (0.01Lux) for Heavy-duty Forklifts & Loaders
- Material: Adopts 304 stainless steel to ensure equipment durability.
- Lens Glass: Uses thickened high-transparency tempered glass to withstand stronger impact.
- Operating Temperature: Operates stably within the range of -20°C to +70°C.
- Waterproof Rating: IP68 certified, resistant to high-pressure water jets.
- Night Vision Function: Equipped with 4 IR/white light LEDs, enabling a visible distance of up to 10 meters in dark environments.
- ATEX Certification Marking: II 2G Ex ib IIB T6 Gb, II 2D Ex tb IIIC (85°C) Db
- IEC Certification Marking: Ex IIIC T6 Gb/DIP A20 TA, T6



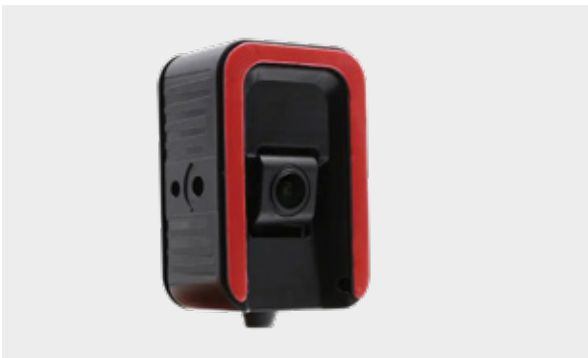
## ZY-C840AI AI Smart Rear View Camera

- AI Smart Detection
- Real-Time Distance Display (0-2m)
- Resolution: AHD1080P/720P
- Voltage: DC12V
- Min Illumination: 0LUX
- Infrared distance: 5-10m
- View Angle: 120°
- Image Mode: Mirror/Normal
- Housing Material: Metal
- Waterproof Rating: IP67
- Working temperature: -20~70°C
- Storage temperature: -30~80°C



## ZY-C834 Shutter Camera

- Resolution: AHD1080P
- Voltage: DC12V
- Min Illumination: 0LUX
- Infrared distance: 5-10m
- View Angle: 120°
- Image Mode: Mirror/Normal
- Housing Material: Metal
- Waterproof Rating: IP67
- Working temperature: -20~70°C
- Storage temperature: -30~80°C



## ADAS

- Resolution: AHD1080P/720P
- Voltage: DC12V
- View Angle: 120°
- Image Mode: Normal
- Housing Material: Plastic
- Working temperature: -20~70°C
- Storage temperature: -30~80°C



## DMS

- Resolution: AHD1080P/720P
- Voltage: DC12V
- Min Illumination: 0LUX
- Infrared distance: 0.3~3m
- View Angle: 120°
- Image Mode: Mirror/Normal
- Housing Material: Plastic
- Working temperature: -20~70°C
- Storage temperature: -30~80°C



ZY-C782

## Explosion-Proof Camera

Resolution: AHD1080P/720P

Voltage: DC12V

Min Illumination: 0LUX

Infrared distance: 5-10m

View Angle: 120°

Image Mode: Mirror/Normal

Housing Material: Aluminum alloy

Waterproof Rating: IP67

Working temperature: -20~70°C

Storage temperature: -30~80°C



ZY-C722

## Explosion-Proof Camera

Resolution: AHD1080P/720P

Voltage: DC12V

Min Illumination: 0LUX

Infrared distance: 5-10m

View Angle: 120°

Image Mode: Mirror/Normal

Housing Material: Stainless steel

Waterproof Rating: IP67

Working temperature: -20~70°C

Storage temperature: -30~80°C



ZY-C866

## Rear View Camera

Resolution: AHD1080P/720P

Voltage: DC12V

Min Illumination: 0LUX

Infrared distance: 5-10m

View Angle: 120°

Image Mode: Mirror/Normal

Housing Material: Metal

Waterproof Rating: IP67

Working temperature: -20~70°C



ZY-C867

## Rear View Camera

Resolution: AHD1080P/720P

Voltage: DC12V

View Angle: 120°

Image Mode: Mirror/Normal

Housing Material: Metal

Waterproof Rating: IP67

Working temperature: -20~70°C

Storage temperature: -30~80°C



## ZY-C803

### Rear View Camera

Resolution: AHD1080P/720P

Voltage: DC12V

View Angle: 120°

Image Mode: Mirror/Normal

Housing Material: Metal

Waterproof Rating: IP67

Working temperature: -20~70°C

Storage temperature: -30~80°C



## ZY-C802

### Rear View Camera

Resolution: AHD1080P/720P

Voltage: DC12V

View Angle: 120°

Image Mode: Mirror/Normal

Housing Material: Metal

Waterproof Rating: IP67

Working temperature: -20~70°C

Storage temperature: -30~80°C



## ZY-C863

### Side View Camera

Resolution: AHD1080P/720P

Voltage: DC12V

Min Illumination: 0LUX

Infrared distance: 5-10m

View Angle: 120°

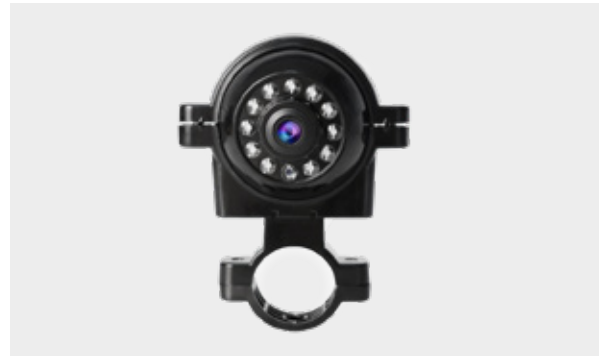
Image Mode: Mirror/Normal

Housing Material: Metal

Waterproof Rating: IP67

Working temperature: -20~70°C

Storage temperature: -30~80°C



## ZY-C862

### Side View Camera

Resolution: AHD1080P/720P

Voltage: DC12V

Min Illumination: 0LUX

Infrared distance: 5-10m

View Angle: 120°

Image Mode: Mirror/Normal

Housing Material: Metal

Waterproof Rating: IP67

Working temperature: -20~70°C

Storage temperature: -30~80°C



**ZY-C808**  
Rear View Camera

Resolution: AHD1080P/720P

Voltage: DC12V

Min Illumination: 0LUX

Infrared distance: 5-10m

View Angle: 120°

Image Mode: Mirror/Normal

Housing Material: Metal

Waterproof Rating: IP67

Working temperature: -20~70°C

Storage temperature: -30~80°C



**ZY-C831**  
Side View Camera

Resolution: AHD1080P/720P

Voltage: DC12V

Min Illumination: 0LUX

Infrared distance: 5-10m

View Angle: 120°

Image Mode: Mirror/Normal

Housing Material: Metal

Waterproof Rating: IP67

Working temperature: -20~70°C

Storage temperature: -30~80°C



**ZY-C601**  
360 Bird View Camera

Sensor: 1/2.9 GC2053

Resolution: 1920\*1080

Voltage: DC12V

View Angle: 220°(H)

White Balance: Auto

Housing Material: Metal

Waterproof Rating: IP67

Working temperature: -20~70°C

Storage temperature: -30~80°C



**ZY-C828**  
Dome Camera With Audio

Resolution: AHD1080P/720P

Voltage: DC12V

Min Illumination: 0LUX

Infrared distance: 5-10m

View Angle: 120°

Image Mode: Mirror/Normal

Housing Material: Metal

Working temperature: -20~70°C

Storage temperature: -30~80°C



**ZY-C826**  
**Dome Camera**

Resolution: AHD1080P/720P

Voltage: DC12V

Min Illumination: 0LUX

Infrared distance: 5-10m

View Angle: 120°

Image Mode: Mirror/Normal

Housing Material: Metal

Working temperature: -20~70°C

Storage temperature: -30~80°C



**ZY-C818**  
**Dome Camera**

Resolution: AHD1080P/720P

Voltage: DC12V

Min Illumination: 0LUX

Infrared distance: 5-10m

View Angle: 120°

Image Mode: Mirror/Normal

Housing Material: Metal

Working temperature: -20~70°C

Storage temperature: -30~80°C



**ZY-C813**  
**Dome Camera**

Resolution: AHD1080P/720P

Voltage: DC12V

Min Illumination: 0LUX

Infrared distance: 5-10m

View Angle: 120°

Image Mode: Mirror/Normal

Housing Material: Plastic

Working temperature: -20~70°C

Storage temperature: -30~80°C



**ZY-C506B**  
**RV Camera**

Resolution: AHD1080P/720P

Voltage: DC12V

Min Illumination: 0LUX

Infrared distance: 5-10m

View Angle: 120°

Image Mode: Mirror/Normal

Housing Material: Plastic

Working temperature: -20~70°C

Storage temperature: -30~80°C

Waterproof Rating: IP68

# ADVANCED SAFETY VISION SYSTEMSS > CAR CAMERA



ZY-C400



ZY-C404



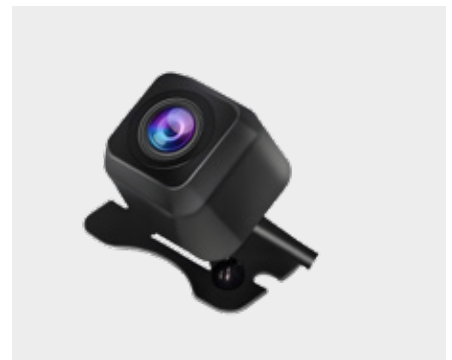
ZY-C405



ZY-C406



ZY-C407



ZY-C410



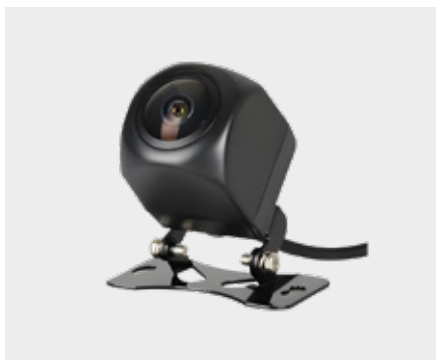
ZY-C411



ZY-C408



ZY-C409



ZY-C402



ZY-C461



ZY-C401

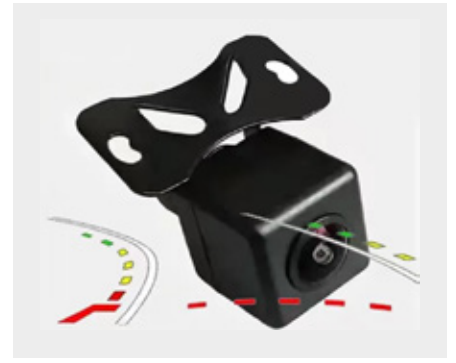
# ADVANCED SAFETY VISION SYSTEMSS > CAR CAMERA



ZY-C403



ZY-C415



ZY-C416



ZY-C414



ZY-C417



ZY-C412



7-inch



4.3-inch



4.3-inch/5-inch



4.3-inch/5-inch



4.3-inch/5-inch



5-inch

# MONITORS

10.1" 9" 7" 5"  
Waterproof  
Touchscreen



**ADVANCED SAFETY  
VISION SYSTEMS**

# HD MONITOR



**ZY-M1068-4CH**  
**10.1" Waterproof Monitor**

Screen: 10-inch IPS LCD
Resolution: 1024*600
Operatin Voltage: DC10-35V
Input signal: AHD1080P/720P/CVBS
Brightness: 600cd/m2
Aspect Ratio: 16:9
Channel: Max 4CH
Display Mode: Single/Split/Quad
Storage: Micro SD Card,Max 512G
Waterproof Rating: IP68
Working temperature: -20~70°C



**ZY-M1006**  
**10.1" 3CH AHD/CVBS Monitor**

Screen: 10-inch IPS LCD
Resolution: 1024*600
Operatin Voltage: DC10-35V
Input signal: AHD1080P/720P/CVBS
Brightness: 600cd/m2
Aspect Ratio: 16:9
Channel: Max 3CH
Display Mode: Single
Working temperature: -20~70°C



**ZY-M1026 / ZY-M949**  
**10.1" 2CH AHD/CVBS Monitor**

Screen: 10-inch IPS LCD
Resolution: 1024*600
Operatin Voltage: DC10-35V
Input signal: AHD1080P/720P/CVBS
Brightness: 600cd/m2
Aspect Ratio: 16:9
Channel: Max 2CH
Display Mode: Single/Split
Working temperature: -20~70°C



**ZY-M1027**  
**10.1" Industrial Monitor**

Screen: 10-inch IPS LCD
Resolution: 1024*600
Operatin Voltage: DC10-35V
Conector: HDMI/VGA/CVBS/USB
Brightness: 600cd/m2
Aspect Ratio: 16:9
Display Mode: Single
Working temperature: -20~70°C

# HD MONITOR

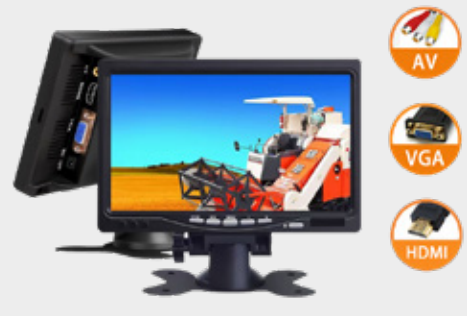
10"



**ZY-M1068-HD**  
**10" HDMI&AV Monitor**

Screen: 10-inch IPS LCD  
Resolution: 1024\*600  
Operatin Voltage: DC10-35V  
Input signal: HDMI/CVBS  
Brightness: 600cd/m2  
Aspect Ratio: 16:9  
Display Mode: Single  
Waterproof Rating: IP68  
Working temperature: -20~70°C

7"



**ZY-M706**  
**7" Industrial Monitor**

Screen: 7-inch IPS LCD  
Resolution: 1024\*600  
Operatin Voltage: DC10-35V  
Input signal: HDMI/VGA/CVBS  
Brightness: 500cd/m2  
Aspect Ratio: 16:9  
Display Mode: Single  
Working temperature: -20~70°C

7"



**ZY-M741**  
**7" 2CH AHD/CVBS Monitor**

Screen: 7-inch IPS LCD  
Resolution: 1024\*600  
Operatin Voltage: DC10-35V  
Input signal: AHD1080P/720P/CVBS  
Brightness: 500cd/m2  
Aspect Ratio: 16:9  
Channel: Max 2CH  
Display Mode: Single/Split  
Working temperature: -20~70°C

7"



**ZY-M709**  
**7" 2CH AHD/CVBS Monitor**

Screen: 7-inch IPS LCD  
Resolution: 1024\*600  
Operatin Voltage: DC10-35V  
Input signal: AHD1080P/720P/CVBS  
Brightness: 500cd/m2  
Aspect Ratio: 16:9  
Channel: Max 2CH  
Display Mode: Single  
Working temperature: -20~70°C

# MORE OPTION

7"



7"



7"



7"



7"



7"



7"



10"



7"



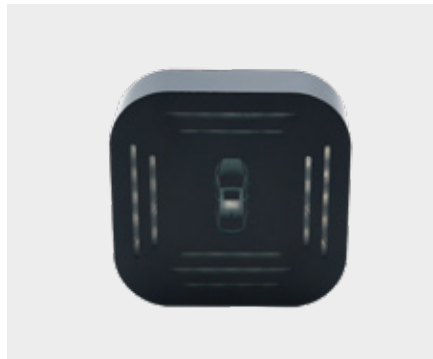
5"



# ACCESSORIES



Speaker



In-car reminder



Speaker



Solar Panel



Battery



Wireless Transceiver



Extension Cable



Trailer Cable



Spring Cable



Adapter



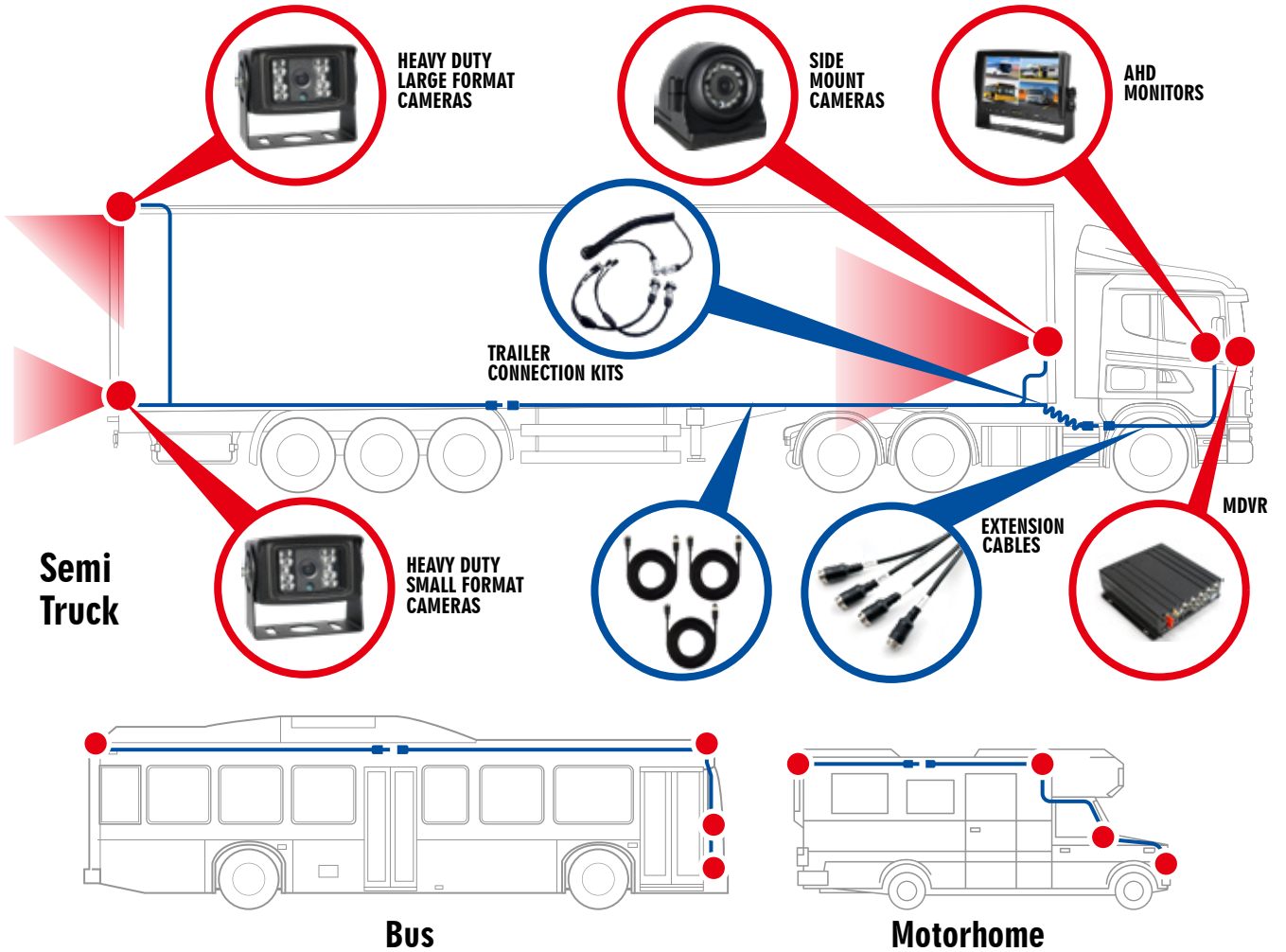
Bracket



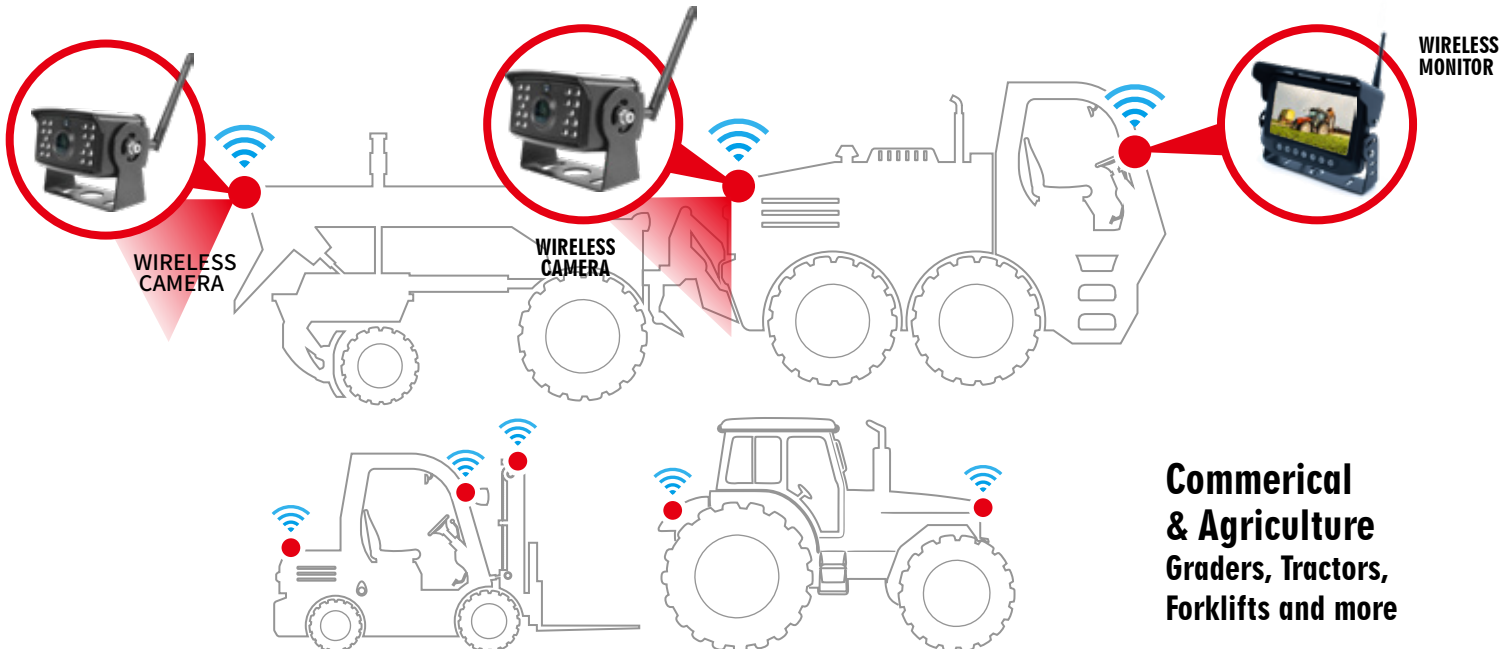
Bracket

# COMPLETE MOUNTING SOLUTIONS

## TRAILER CONNECTION KITS



## WIRELESS MOUNTING SOLUTIONS





紫洋兴  
ZIYANGXING

## Focusing On Driving Safety For Large Vehicles/Video Surveillance



SHENZHEN ZIYANGXING TECHNOLOGY CO. , LTD.  
ZIYANGXING(HK)TRADING COMPANY LIMITED



Wechat



Whatsapp

Email:sales@szyx-tech.com

Tel :+86 13662628966

www.zyxcarmonitor.com

Factory Add:5th floor, Building D, Block B,Baoying Industrial Park,No.21st,Wulian Road,  
Longxi Community,Longgang Street,Shenzhen City,Guangdong Province,China