

# UNR1 AC Charger Series

Level 2



NEMA 14-50



Type 1 Plug



NACS Plug



Warranty 3 Years



40A/48A



**FUZHOU ULANDPOWER TECHNOLOGY CO.,LTD.**

✉ [info@ulandpower.com](mailto:info@ulandpower.com)

🌐 [www.ulandpower.com](http://www.ulandpower.com)

📍 Building 1, Wanfu Center, Keji East Road, High tech Zone, Fuzhou City, Fujian Province, China, ZIP CODE: 350108

## Product Overview

The UNR1 Series residential charging station provides a modern and convenient smart home charging solution, available in two versions with Type 1 and NACS connectors. It offers optional output choices of NEMA plugs or hardwired connections.

# Highlights

## Powerful

Up to 48A for fast charging



## Smart

Smart APP via WIFI or Bluetooth,  
easily control



## Flexible

NEMA plug or a hardwire connection  
installation to suit any need



## Durability

IP66/IK10, for any indoor or outdoor  
location



## Reliable

UL compliant, Energy Star, ETL and  
FCC certified



## Compatible

Supports all SAE J1772 Type 1 and Tesla  
NACS standard EVs, making it versatile  
for various EV models

# Product Series Comparison

## UNR1

 **OCPP:**  
OCPP 1.6J

 **Connector:**  
Type 1/NACS

 **COMMUNICATION:**  
WIFI/Bluetooth


 **Dynamic Load Balancing:**  
Not supported

## UNR1-Pro

 **OCPP:**  
OCPP 1.6J

 **Connector:**  
Type 1/NACS

 **COMMUNICATION:**  
WIFI/Bluetooth/RS485/LAN  
Optional

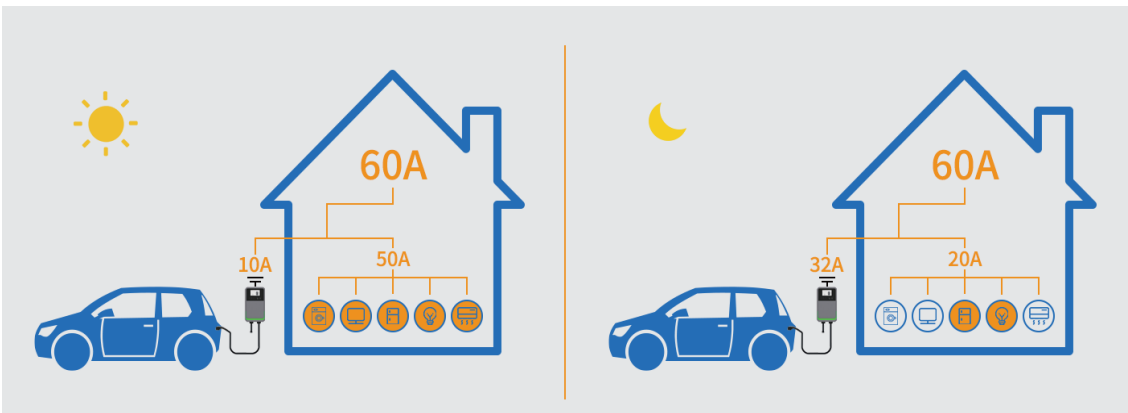
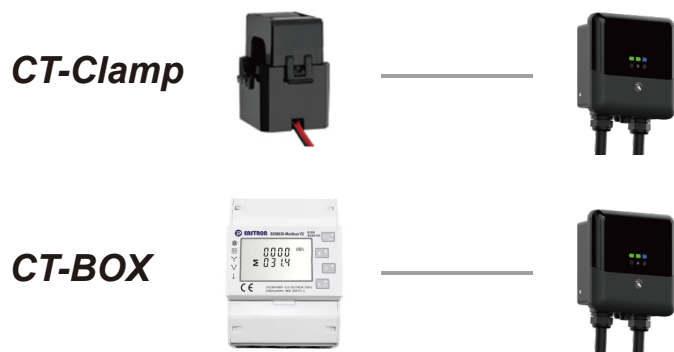
 **Dynamic Load Balancing:**  
Achieve load balancing  
through CT-CLAMP or  
CT-BOX.

## Versatile Connectivity

Connectivity via WiFi, RS485, Bluetooth and LAN optional, enabling real-time monitoring and management.

## Dynamic Load Balancing

The optional CT-Clamp and CT-BOX can be easily integrated to dynamically adjust the current supplied to the EV, balancing the load and preventing overloading.



# Model Selection



## Models-UNR1(Type 1)

Model No.	UNR1		UNR1Pro	
	UNR1-A40T	UNR1-A48T	UNR1Pro-A40T	UNR1Pro-A48T
ELECTRICAL SPECIFICATION				
Input Connector	NEMA, Hardwired Optional	Hardwired	NEMA, Hardwired Optional	Hardwired
Voltage	208/240, 180 to 264VAC			
Amperage/Power Output	40A/9.6KW	48A/11.5KW	40A/9.6KW	48A/11.5KW
Energy Metering Accuracy	±1%			
Mounting Option	Wall or Pedestal mount, Pedestal Optional			
CHARGING INTERFACE				
Charging Connector	SAE J1772 Type 1 Plug			
Charging Cable Length	25ft Standard			
USER INTERACTION				
LED Status Indicator	CHARGING/CONNECT/FAULT status indication			
Resetting key	Reset or restore factory Settings			
Authentication	RFID: ISO14443 Type A&B			
Remote control	U-Charger APP			
COMMUNICATION				
Network Interface	WiFi/BT Standard		WiFi/BT Standard,LAN Optional	
Charging Protocol	OCPP1.6J			
Extend	Without		1*RS485,CT-CLAMP Optional	
SAFETY & COMPLIANCE				
Safety Protection	Ground Fault Detection: CCID20,Ground Monitor: UL2231, Surge Protection:6kV @2,000A			
Protection	UVP, OVP, OCP, OTP, Control Pilot Fault Protection, Relay-sticking protection, Ground Fault Protection			
Safety Compliance	UL 2594/CSA C22.2 No,280-16UL 2231-1 /CSA C22 2 No. 281.1-12.UL 2231-2/C5A C22 2 No.281.2-12			
Certiffcation	ETL/FCC/EnergyStar			
ENVIRONMENTAL				
Operating Temperature	-30℃ ~ 55℃			
Operating Humidity	5%~95% RH, Non-condensing			
Operating Altitude	≤2000m, No Derating			
IP/IK Level	IP66/IK10			
SPECIFICATION				
Net Weight	6.5KG	7.4KG	6.5KG	7.4KG
Gross Weight	9.9KG	10.8KG	9.9KG	10.8KG
Product Dimensions	220W*220D*101.5H(mm)			
Package Dimensions	395W*375D*295H(mm)			



# Model Selection



## Models-UNR1(NACS)

Model No.	UNR1		UNR1Pro	
	UNR1-A40N	UNR1-A48N	UNR1Pro-A40N	UNR1Pro-A48N
ELECTRICAL SPECIFICATION				
Input Connector	NEMA, Hardwired Optional	Hardwired	NEMA, Hardwired Optional	Hardwired
Voltage	208/240, 180 to 264VAC			
Amperage/Power Output	40A/9.6KW	48A/11.5KW	40A/9.6KW	48A/11.5KW
Energy Metering Accuracy	±1%			
Mounting Option	Wall or Pedestal mount, Pedestal Optional			
CHARGING INTERFACE				
Charging Connector	NACS Plug			
Charging Cable Length	25ft Standard			
USER INTERACTION				
LED Status Indicator	CHARGING/CONNECT/FAULT status indication			
Resetting key	Reset or restore factory Settings			
Authentication	RFID: ISO14443 Type A&B			
Remote control	U-Charger APP			
COMMUNICATION				
Network Interface	WiFi/BT Standard		WiFi/BT Standard,LAN Optional	
Charging Protocol	OCPP1.6J			
Extend	Without		1*RS485,CT-CLAMP Optional	
SAFETY & COMPLIANCE				
Safety Protection	Ground Fault Detection: CCID20,Ground Monitor: UL2231, Surge Protection:6kV @2,000A			
Protection	UVP, OVP, OCP, OTP, Control Pilot Fault Protection, Relay-sticking protection, Ground Fault Protection			
Safety Compliance	UL 2594/CSA C22.2 No,280-16UL 2231-1 /CSA C22 2 No. 281.1-12.UL 2231-2/C5A C22 2 No.281.2-12			
Certiffcation	ETL/FCC/EnergyStar			
ENVIRONMENTAL				
Operating Temperature	-30℃ ~ 55℃			
Operating Humidity	5%~95% RH, Non-condensing			
Operating Altitude	≤2000m, No Derating			
IP/IK Level	IP66/IK10			
SPECIFICATION				
Net Weight	6.5KG	7.4KG	6.5KG	7.4KG
Gross Weight	9.9KG	10.8KG	9.9KG	10.8KG
Product Dimensions	220W*220D*101.5H(mm)			
Package Dimensions	395W*375D*295H(mm)			

# U-Charger APP

## Smart Electricity Cost Optimization

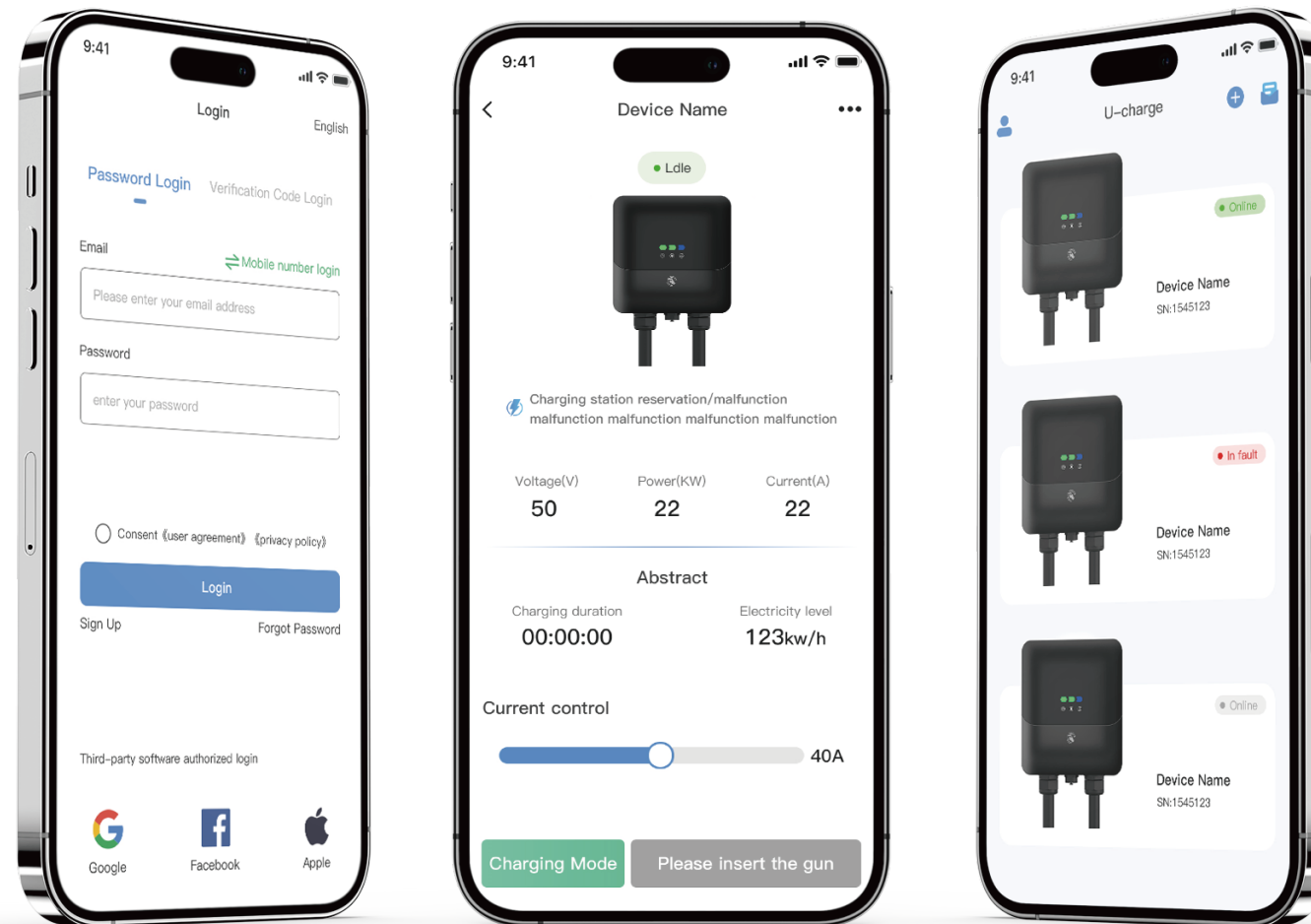
Smartly calculates the best charging times and current to help users reduce electricity costs and achieve energy savings.

## Real-Time Alert Notifications

Timely alerts for charging status, enhancing management convenience.

## Operational Status Monitoring

Comprehensive monitoring of equipment performance to ensure stable operation.



## Charging Data and Fault Analysis

Enhance safety and management by quickly identifying problems through data analysis.

## User-Friendly Interface

A simple and intuitive design ensures users can easily navigate the app, enhancing their experience.

## Customizable Features

Offers personalized settings based on customer needs to meet specific user requirements.

## APP Overview

The app enhances charging safety through real-time monitoring, intelligent fault analysis, and instant alerts, while featuring Smart Electricity Cost Optimization. This empowers users to optimize electricity costs precisely, delivering a seamless experience in effective charging management.

# U-Energy Platform

## Resource Sharing

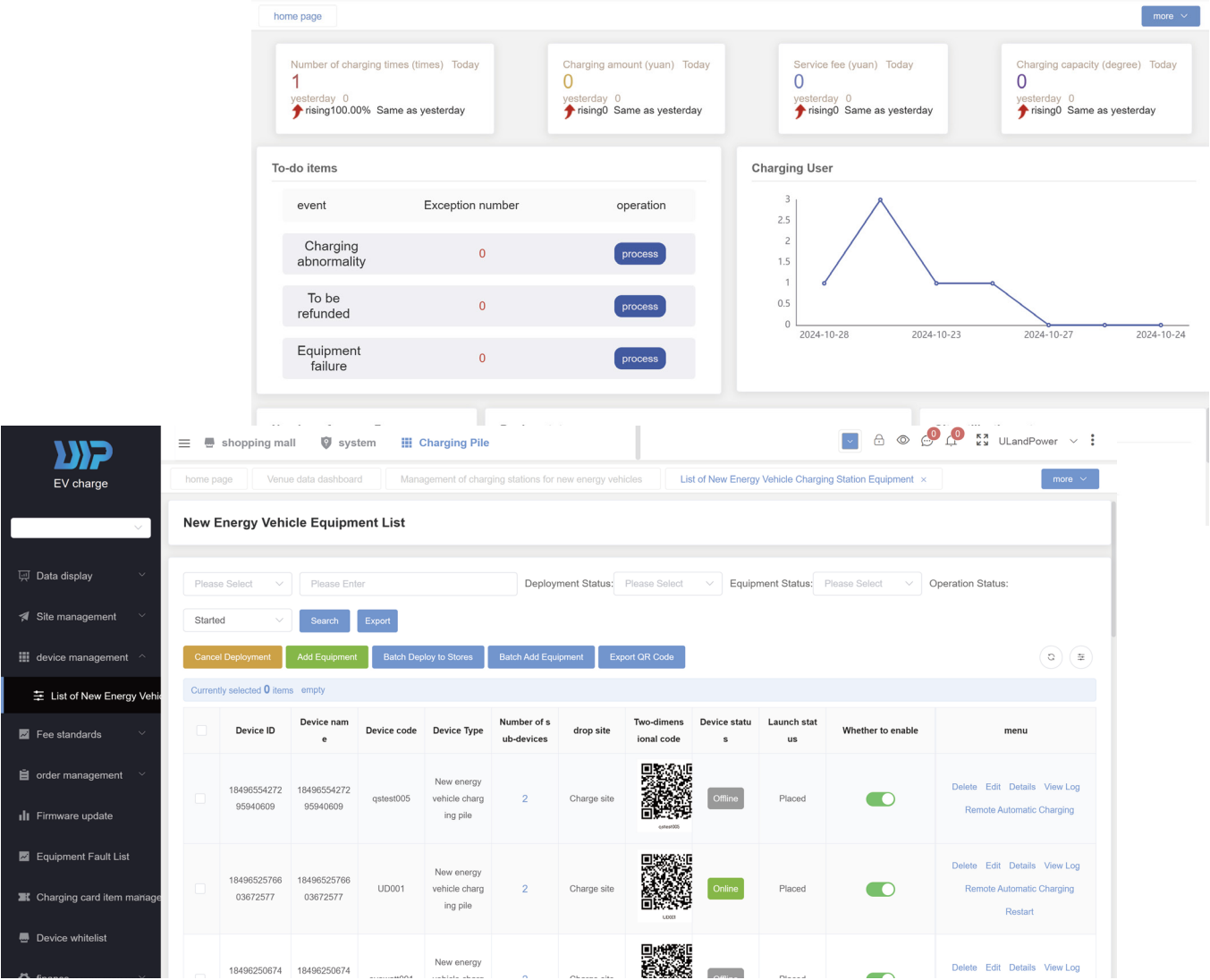
The platform achieves data isolation between users and charging stations, ensuring information security.

## Smart Dashboard

Displays real-time data for quick insights into charging station performance and operational status.

## Private Deployment

Supports private deployment to flexibly adapt to specific security and management needs.



## Global Access

The management backend supports access for global clients, enhancing operational convenience.

## Remote Management

Users worldwide can remotely configure charging stations via the app, improving efficiency.

## Data Analysis

Collecting charging station data and enabling remote diagnostics improve operational efficiency and reduce costs.

## Platform Overview

The platform, built on the SaaS model, supports private deployment and data isolation, enabling cloud management and real-time monitoring. By collecting charging station data, it reduces communication and maintenance costs, while enabling remote diagnostics and intelligent fault analysis to minimize repair time and operational expenses.