

# UER1 AC Charger Series

## Mode 3



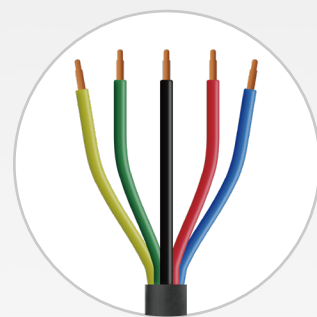
Type 2 cable



Warranty 3 Years



7kW / 22kW



**FUZHOU ULANDPOWER TECHNOLOGY CO.,LTD.**

✉ [info@ulandpower.com](mailto:info@ulandpower.com)

🌐 [www.ulandpower.com](http://www.ulandpower.com)

📍 Building 1, Wanfu Center, Keji East Road, High tech Zone, Fuzhou City, Fujian Province, China, ZIP CODE: 350108

### Product Overview

The UER1 Series residential charging station is compatible with Type 2 connectors and features the O-PEN protection and multiple safety protections. Its integrated app and management platform enables comprehensive and efficient management, from installation to real-time remote monitoring and maintenance.

# Highlights

## Powerful

Up to 22kW for fast, efficient charging



## Smart

Smart APP via WIFI or Bluetooth, easily control



## Safe

Built-in PEN fault protection, Type A + DC6mA, and multiple safety features



## Durability

IP66/IK10, for any indoor or outdoor location



## Reliable

IEC 62196-2 compliant and SGS-CE certified



## Expandability

Supports RS485 for dynamic load balancing and future upgrades



# Product Series Comparison

## UER1

 **OCPP:**  
OCPP 1.6J

 **Connector:**  
Type 2

 **COMMUNICATION:**  
WIFI/Bluetooth


 **Dynamic Load Balancing:**  
Not supported

## UER1-Pro

 **OCPP:**  
OCPP 1.6J

 **Connector:**  
Type 2

 **COMMUNICATION:**  
WIFI/Bluetooth/RS485/LAN  
Optional

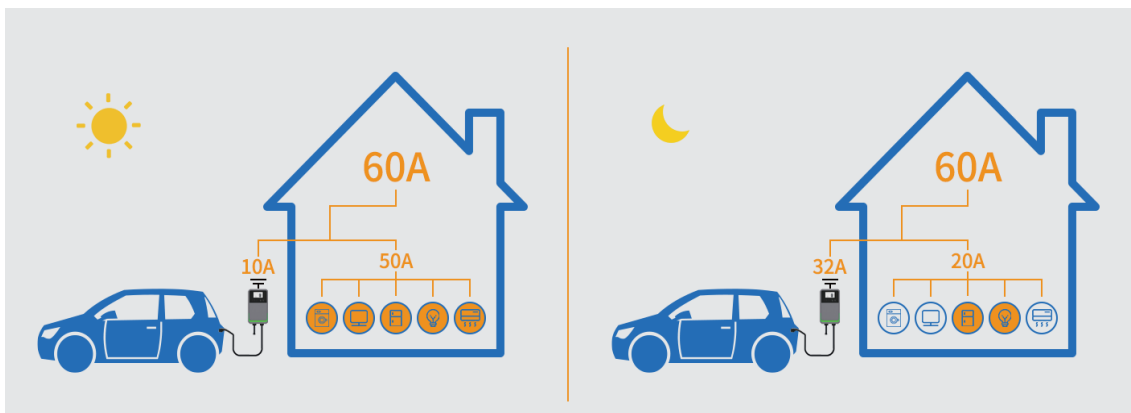
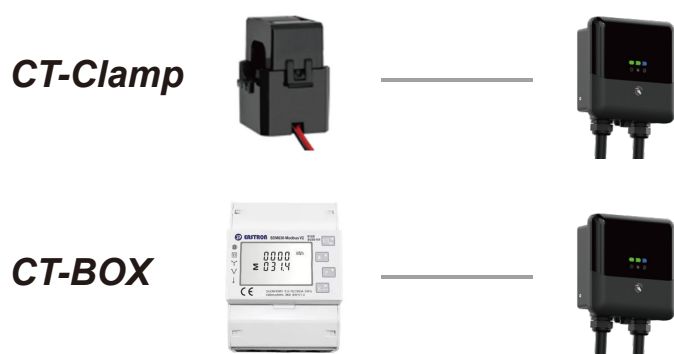
 **Dynamic Load Balancing:**  
Achieve load balancing  
through CT-CLAMP or  
CT-BOX.

## Versatile Connectivity

Connectivity via WiFi, RS485, Bluetooth and LAN optional, enabling real-time monitoring and management.

## Dynamic Load Balancing

The optional CT-Clamp and CT-BOX can be easily integrated to dynamically adjust the current supplied to the EV, balancing the load and preventing overloading.



# Model Selection



## UER1

Model No.	UER1	
	UER1-P7	UER1-P22
ELECTRICAL SPECIFICATION		
Input Connector	Hardwired	
Voltage	230Vac±10%	400Vac±10%
Amperage/Power Output	32A/7KW	32A/22KW
Energy Metering Accuracy	±1%	
Mounting Option	Wall or Pedestal mount, Pedestal Optional	
CHARGING INTERFACE		
Charging Connector	IEC 62196-2 Compliant, Type 2 cable	
Charging Cable Length	5m Standard, 7m Optional	
USER INTERACTION		
LED Status Indicator	CHARGING/CONNECT/FAULT status indication	
Resetting key	Reset or restore factory Settings	
Authentication	RFID: ISO14443 Type A&B	
Remote control	U-Charger APP	
COMMUNICATION		
Network Interface	WiFi/BT Standard	
Charging Protocol	OCPP1.6J	
SAFETY & COMPLIANCE		
Safety Protection	Ground Fault Detection:A+DC6,Ground Monitor: BS-7671, O-PEN:BS-7671,Surge Protection:4kV @2,000A	
Protection	UVP, OVP, OCP, OTP, Control Pilot Fault Protection, Relay-sticking protection, Ground Fault Protection,O-PEN Protection	
Safety Compliance	IEC61851-1, IEC61851-21-2, EN 62311, EN 62479, IEC/EN 62955	
Certiffcation	CE	
ENVIRONMENTAL		
Operating Temperature	-30℃ ~ 55℃	
Operating Humidity	5%~95% RH, Non-condensing	
Operating Altitude	≤2000m, No Derating	
IP/IK Level	IP66/IK10	
SPECIFICATION		
Net Weight	6.5KG	7.4KG
Gross Weight	9.9KG	10.8KG
Product Dimensions	220W*220D*101.5H(mm)	
Package Dimensions	400W*390D*275H(mm)	

# Model Selection



## UER1-Pro

Model No.	UER1Pro	
	UER1Pro-P7	UER1Pro-P22
ELECTRICAL SPECIFICATION		
Input Connector	Hardwired	
Voltage	230Vac±10%	400Vac±10%
Amperage/Power Output	32A/7KW	32A/22KW
Energy Metering Accuracy	±1%	
Mounting Option	Wall or Pedestal mount, Pedestal Optional	
CHARGING INTERFACE		
Charging Connector	IEC 62196-2 Compliant, Type 2 cable	
Charging Cable Length	5m Standard, 7m Optional	
USER INTERACTION		
LED Status indicater	CHARGING/CONNECT/FAULT status indication	
Resetting key	Reset or restore factory Settings	
Authentication	RFID: ISO14443 Type A&B	
Remote control	U-Charger APP	
COMMUNICATION		
Network interface	WiFi/BT Standard,LAN Optional	
Charging Protocol	OCPP1.6J	
RS485	1*RS485,CT-CLAMP Optional,CT-BOX Optional	
Cenfig Toel	Web Portal over WiFi	
Debug Tool	Wireless debug over BT	
SAFETY & COMPLIANCE		
Safety Protection	Ground Fault Detection:A+DC6,Ground Monitor: BS-7671, O-PEN:BS-7671, Surge Protection:4kV @2,000A	
Protection	UVP, OVP, OCP, OTP, Control Pilot Fault Protection, Relay-sticking protection, Ground Fault Protection,O-PEN Protection	
Safety Compliance	IEC61851-1, IEC61851-21-2, EN 62311, EN 62479, IEC/EN 62955	
Certiffcation	CE	
ENVIRONMENTAL		
Operating Temoerature	-30°C ~ 55°C	
Operating Humidity	5%~95% RH, Non-condensing	
Operating Altitude	≤2000m, No Derating	
IP/IK Level	IP66/IK10	
SPECIFICATION		
Net Weight	6.5KG	7.4KG
Gross Weight	9.9KG	10.8KG
Product Dimensions	220W*220D*101.5H(mm)	
Package Dimensions	400W*390D*275H(mm)	



# U-Charger APP

## Smart Electricity Cost Optimization

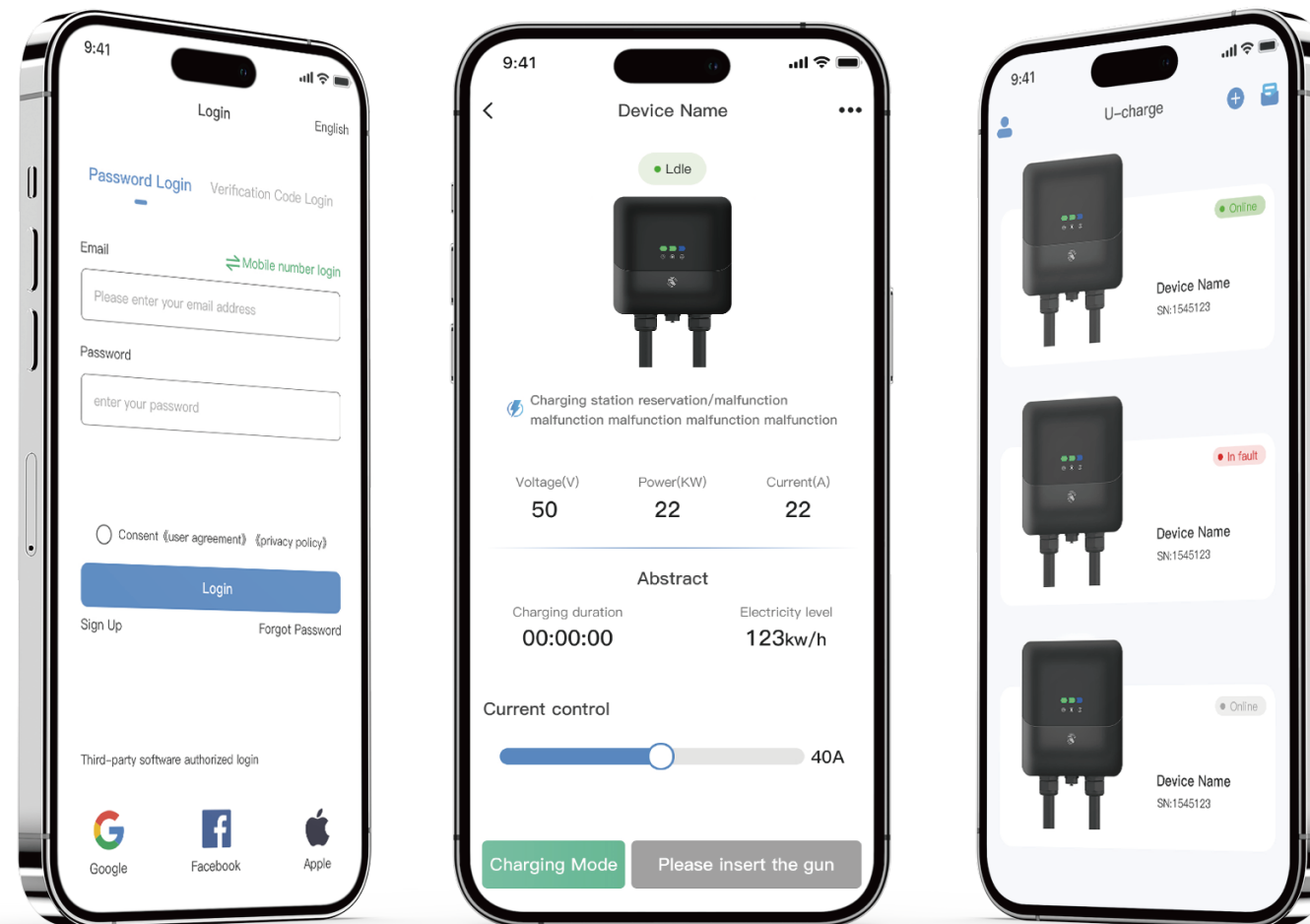
Smartly calculates the best charging times and current to help users reduce electricity costs and achieve energy savings.

## Real-Time Alert Notifications

Timely alerts for charging status, enhancing management convenience.

## Operational Status Monitoring

Comprehensive monitoring of equipment performance to ensure stable operation.



## Charging Data and Fault Analysis

Enhance safety and management by quickly identifying problems through data analysis.

## User-Friendly Interface

A simple and intuitive design ensures users can easily navigate the app, enhancing their experience.

## Customizable Features

Offers personalized settings based on customer needs to meet specific user requirements.

## APP Overview

The app enhances charging safety through real-time monitoring, intelligent fault analysis, and instant alerts, while featuring Smart Electricity Cost Optimization. This empowers users to optimize electricity costs precisely, delivering a seamless experience in effective charging management.

# U-Energy Platform

## Resource Sharing

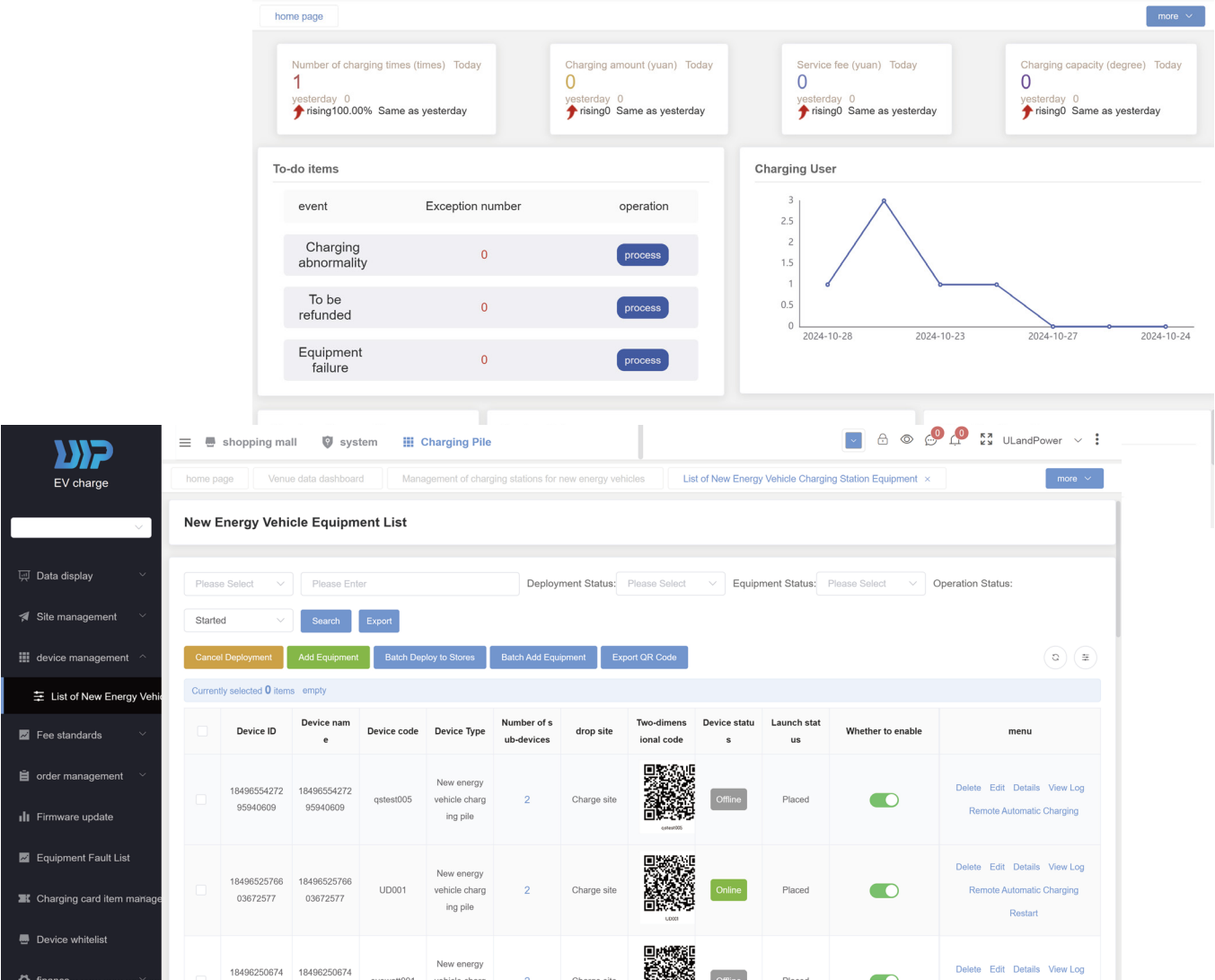
The platform achieves data isolation between users and charging stations, ensuring information security.

## Smart Dashboard

Displays real-time data for quick insights into charging station performance and operational status.

## Private Deployment

Supports private deployment to flexibly adapt to specific security and management needs.



## Global Access

The management backend supports access for global clients, enhancing operational convenience.

## Remote Management

Users worldwide can remotely configure charging stations via the app, improving efficiency.

## Data Analysis

Collecting charging station data and enabling remote diagnostics improve operational efficiency and reduce costs.

## Platform Overview

The platform, built on the SaaS model, supports private deployment and data isolation, enabling cloud management and real-time monitoring. By collecting charging station data, it reduces communication and maintenance costs, while enabling remote diagnostics and intelligent fault analysis to minimize repair time and operational expenses.