

UER1 AC Charger Series

Mode 3



Type 2 cable



Warranty 3 Years



7kW / 22kW



FUZHOU ULANDPOWER TECHNOLOGY CO.,LTD.

✉ info@ulandpower.com

🌐 www.ulandpower.com

📍 Building 1, Wanfu Center, Keji East Road, High tech Zone, Fuzhou City, Fujian Province, China, ZIP CODE: 350108

Product Overview

The UER1 Series residential charging station is compatible with Type 2 connectors and features the O-PEN protection and multiple safety protections. Its integrated app and management platform enables comprehensive and efficient management, from installation to real-time remote monitoring and maintenance.

Highlights

Powerful

Up to 22kW for fast, efficient charging



Smart

Smart APP via WIFI or Bluetooth, easily control



Safe

Built-in PEN fault protection, Type A + DC6mA, and multiple safety features



Durability

IP66/IK08, for any indoor or outdoor location



Reliable

IEC 62196-2 compliant and SGS-CE certified



Expandability

Supports RS485 for dynamic load balancing and future upgrades



Model Selection



UER1

Model No.	UER1		
	UER1-P7	UER1-P11	UER1-P22
ELECTRICAL SPECIFICATION			
Input Connector	Default cable *1m		
Voltage	230Vac±10%	400Vac±10%	400Vac±10%
Amperage/Power Output	32A/7KW	16A/11KW	32A/22KW
Energy Metering Accuracy	±1%		
Mounting Option	Wall or Pedestal mount, Pedestal Optional		
CHARGING INTERFACE			
Charging Connector	IEC 62196-2 Compliant, Type 2 cable		
Charging Cable Length	5m Standard, 7m Optional		
USER INTERACTION			
LED Status Indicator	POWER/CHARGING/CONNECT/FAULT status indication		
Reset button	Reset or restore factory Settings		
RFID	ISO14443 Type A&B		
Remote control	U-Charger APP		
COMMUNICATION			
Network Interface	WiFi/BT		
SAFETY & COMPLIANCE			
RCD	TypeA+DC6mA		
Surge Protection	4kV @2,000A		
Protection	UVP(UnderVoltage), OVP(OverVoltage), OCP(OverCurrent), OTP(OverTemp), Control Pilot Fault Protection, Relay-sticking protection, Ground Fault Protection,O-PEN Protection		
Safety Compliance	IEC61851-1, IEC61851-21-2, EN 62311, EN 62479, IEC/EN 62955		
Certification	CE		
ENVIRONMENTAL			
Operating Temperature	-30°C to 55°C		
Operating Humidity	5%~95% RH, Non-condensing		
Operating Altitude	≤2000m, No Derating		
IP/IK Level	IP66/IK08		
SPECIFICATION			
Net Weight	4.1kg	4.0kg	5.3kg
Gross Weight	5.9kg	5.8kg	7.0kg
Product Dimensions	220W*220D*101.5H(mm)		
Package Dimensions	395W*375D*295H(mm)		

U-Charger APP

Smart Electricity Cost Optimization

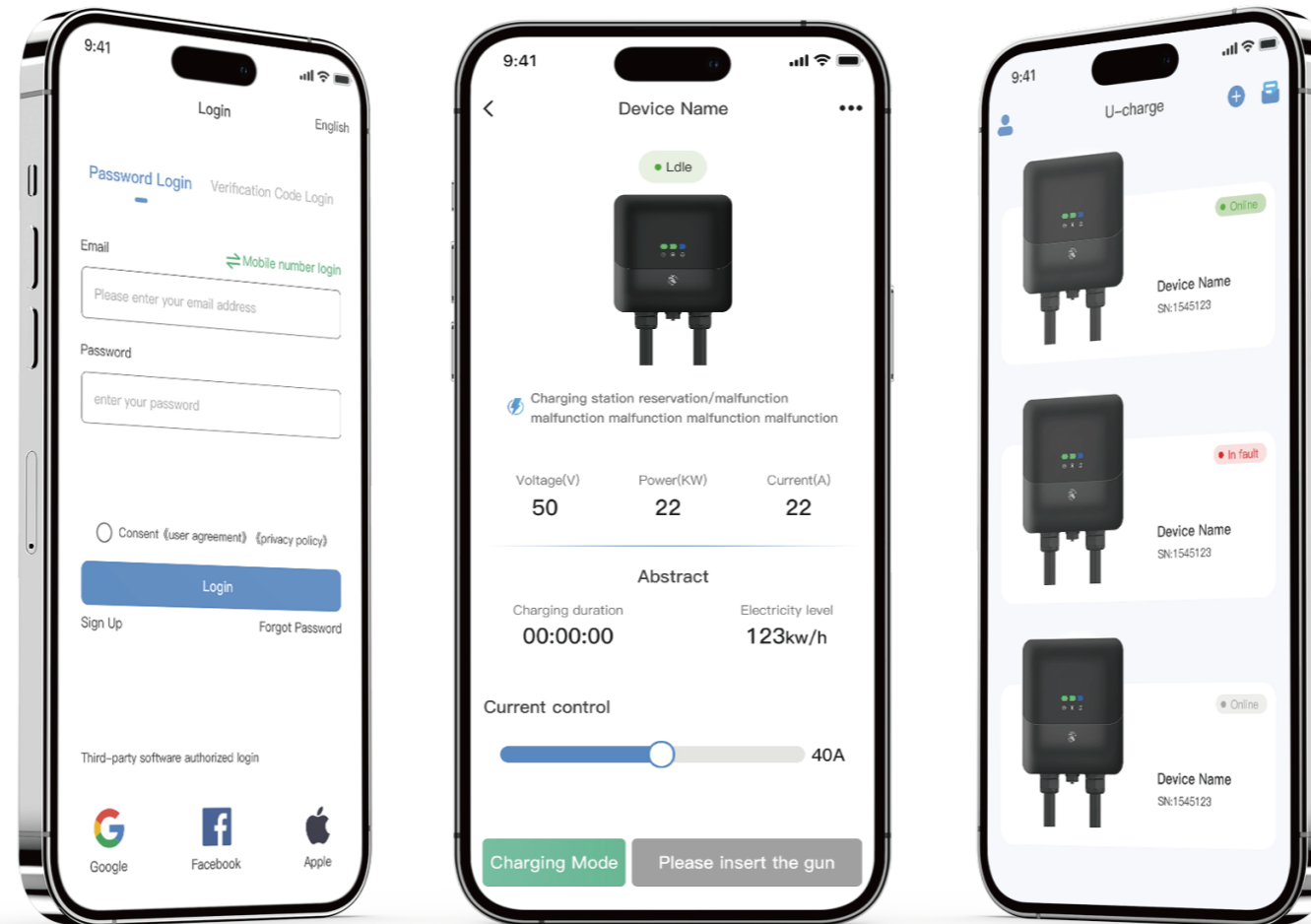
Smartly calculates the best charging times and current to help users reduce electricity costs and achieve energy savings.

Real-Time Alert Notifications

Timely alerts for charging status, enhancing management convenience.

Operational Status Monitoring

Comprehensive monitoring of equipment performance to ensure stable operation.



Charging Data and Fault Analysis

Enhance safety and management by quickly identifying problems through data analysis.

User-Friendly Interface

A simple and intuitive design ensures users can easily navigate the app, enhancing their experience.

Customizable Features

Offers personalized settings based on customer needs to meet specific user requirements.

APP Overview

The app enhances charging safety through real-time monitoring, intelligent fault analysis, and instant alerts, while featuring Smart Electricity Cost Optimization. This empowers users to optimize electricity costs precisely, delivering a seamless experience in effective charging management.

U-Energy Platform

Resource Sharing

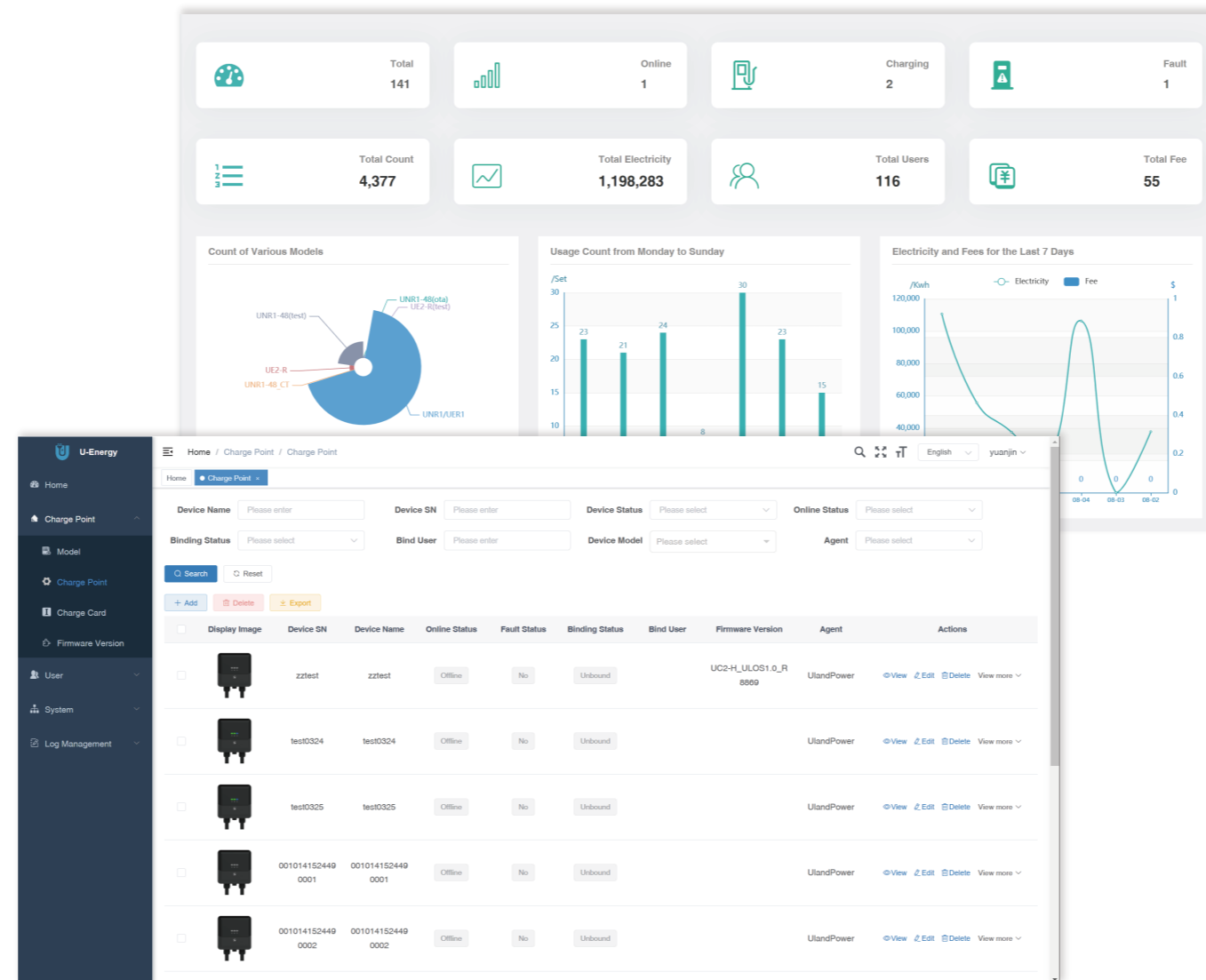
The platform achieves data isolation between users and charging stations, ensuring information security.

Smart Dashboard

Displays real-time data for quick insights into charging station performance and operational status.

Private Deployment

Supports private deployment to flexibly adapt to specific security and management needs.



Global Access

The management backend supports access for global clients, enhancing operational convenience.

Remote Management

Users worldwide can remotely configure charging stations via the app, improving efficiency.

Data Analysis

Collecting charging station data and enabling remote diagnostics improve operational efficiency and reduce costs.

Platform Overview

The platform, built on the SaaS model, supports private deployment and data isolation, enabling cloud management and real-time monitoring. By collecting charging station data, it reduces communication and maintenance costs, while enabling remote diagnostics and intelligent fault analysis to minimize repair time and operational expenses.