



# UER1Pro AC Charger Series

## Mode 3



Type 2 cable



Warranty 3 Years



7kW / 22kW



**FUZHOU ULANDPOWER TECHNOLOGY CO.,LTD.**

✉ info@ulandpower.com

🌐 www.ulandpower.com

📍 Building 1, Wanfu Center, Keji East Road, High tech Zone, Fuzhou City, Fujian Province, China, ZIP CODE: 350108

### Product Overview

The UER1Pro Series residential charging station is compatible with Type 2 connectors and features the O-PEN protection and multiple safety protections. Its integrated app and management platform enables comprehensive and efficient management, from installation to real-time remote monitoring and maintenance.

# Highlights

## Powerful



Up to 22kW for fast, efficient charging

## Smart



Smart APP via WIFI or Bluetooth, easily control

## Safe



Built-in PEN fault protection, Type A + DC6mA, and multiple safety features



## Durability

IP66/IK08, for any indoor or outdoor location



## Reliable

IEC 62196-2 compliant and SGS-CE certified



## Expandability

Supports RS485 for dynamic load balancing and future upgrades

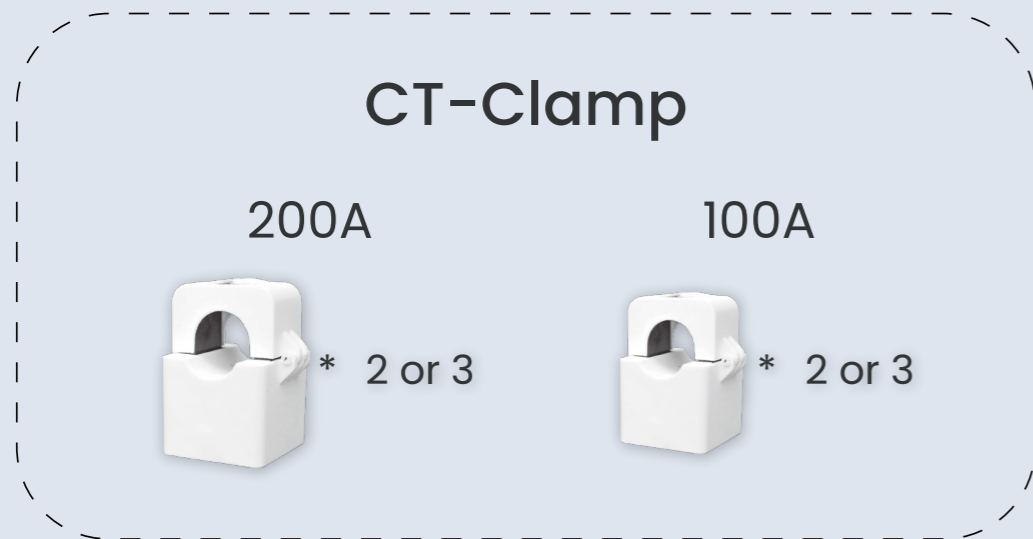
# Model Selection



## Models-UER1Pro

Model No.	UER1Pro-P7	UER1Pro-P11	UER1Pro-P22
<b>ELECTRICAL SPECIFICATION</b>			
Input Connector	Default cable *1m		
Voltage	230Vac±10%	400Vac±10%	400Vac±10%
Amperage/Power Output	32A/7KW	16A/11KW	32A/22KW
Energy Metering Accuracy	±1%		
Mounting Option	Wall or Pedestal mount, Pedestal Optional		
<b>CHARGING INTERFACE</b>			
Charging Connector	IEC 62196-2 Compliant, Type 2 cable		
Charging Cable Length	5m Standard, 7m Optional		
<b>USER INTERACTION</b>			
LED Status Indicator	POWER/CHARGING/CONNECT/FAULT status indication		
Reset button	Reset or restore factory Settings		
RFID	ISO14443 Type A&B		
Remote control	U-Charger APP		
<b>COMMUNICATION</b>			
Network Interface	WiFi/BT		
Extend	RS485 * 1		
	LAN Optional, EnerSync Optional		
<b>SAFETY &amp; COMPLIANCE</b>			
RCD	TypeA+DC6mA		
Surge Protection	4kV @2,000A		
Protection	UVP(UnderVoltage), OVP(OverVoltage), OCP(OverCurrent), OTP(OverTemp), Control Pilot Fault Protection, Relay-sticking protection, Ground Fault Protection,O-PEN Protection		
Safety Compliance	IEC61851-1, IEC61851-21-2, EN 62311, EN 62479, IEC/EN 62955		
Certification	CE		
<b>ENVIRONMENTAL</b>			
Operating Temperature	-30°C to 55°C		
Operating Humidity	5%~95% RH, Non-condensing		
Operating Altitude	≤2000m, No Derating		
IP/IK Level	IP66/IK08		
<b>SPECIFICATION</b>			
Net Weight	4.1kg	4.0kg	5.3kg
Gross Weight	5.9kg	5.8kg	7.0kg
Product Dimensions	220W*220D*101.5H(mm)		
Package Dimensions	395W*375D*295H(mm)		

# General Specifications - EnerSync Power Monitor



<b>Input</b>	110-240 VAC , 50-60Hz
<b>Measurement Accuracy</b>	±1%
<b>Maximum voltage sense range</b>	264VAC L-N per channel
<b>264VAC L-N per channel</b>	3
<b>Current Measurement Channels</b>	200A: 3   100A: 3
<b>Power usage</b>	<3 watts
<b>Wi-Fi</b>	2.4 GHz IEEE 802.11b/g/n
<b>Ethernet</b>	10/100Base-T, IEEE 802.3
<b>Operating conditions</b>	-22° to 140° F (-30° to 60° C)   0 to 95% RH   Up to 3,000 meters
<b>Certifications</b>	Safety: UL 61010, UL 2808   EMC: FCC, ISED, CE, PSE, UKCA
<b>Measurement Category</b>	200A CT Ports: Measurement Category IV   100A CT Ports: Measurement Category III
<b>CT Wire Length</b>	1m
<b>CT Inside Diameter</b>	200A CT: 22mm   100A CT: 15mm

# U-Charger APP

## Smart Electricity Cost Optimization

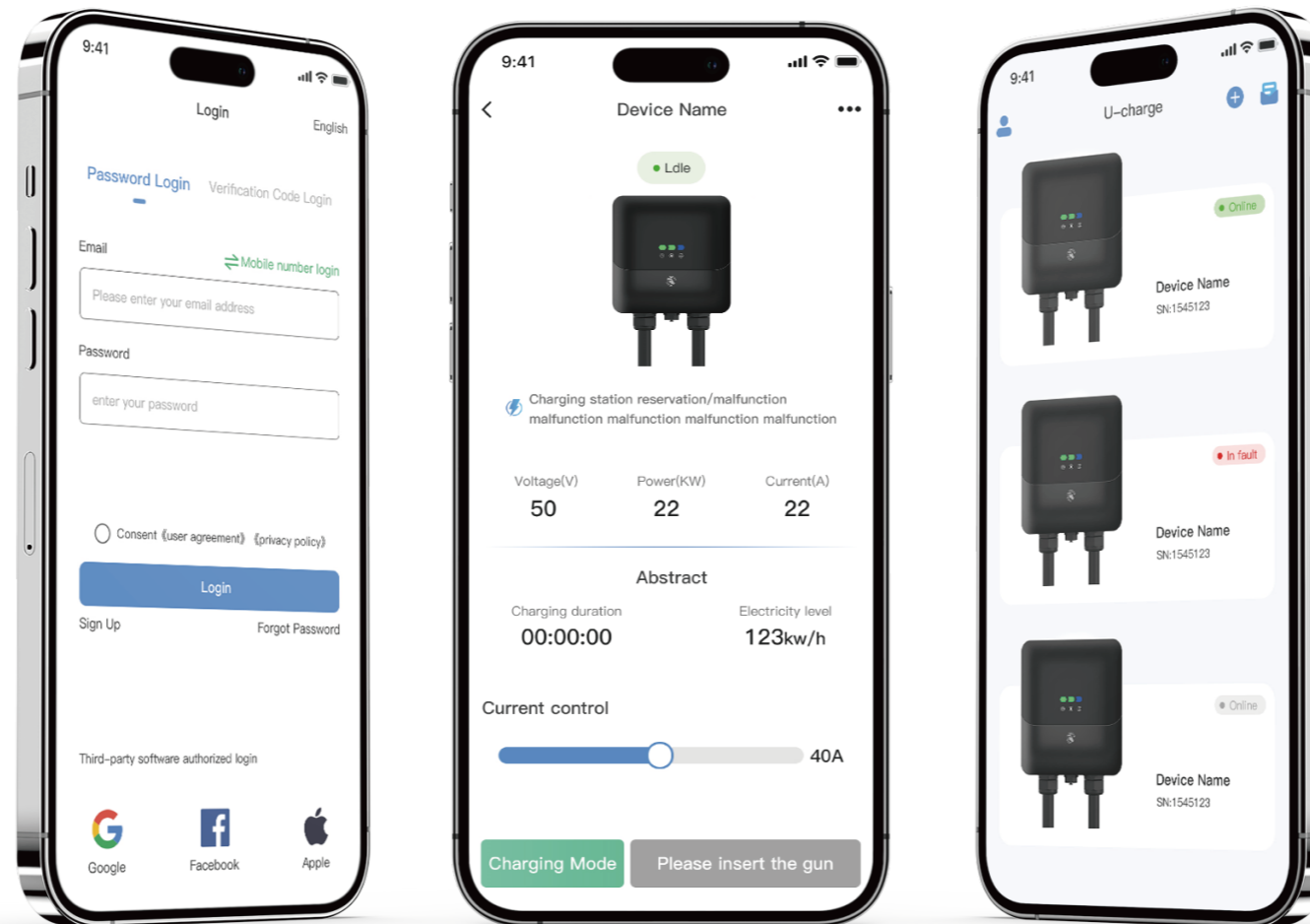
Smartly calculates the best charging times and current to help users reduce electricity costs and achieve energy savings.

## Real-Time Alert Notifications

Timely alerts for charging status, enhancing management convenience.

## Operational Status Monitoring

Comprehensive monitoring of equipment performance to ensure stable operation.



## Charging Data and Fault Analysis

Enhance safety and management by quickly identifying problems through data analysis.

## User-Friendly Interface

A simple and intuitive design ensures users can easily navigate the app, enhancing their experience.

## Customizable Features

Offers personalized settings based on customer needs to meet specific user requirements.

## APP Overview

The app enhances charging safety through real-time monitoring, intelligent fault analysis, and instant alerts, while featuring Smart Electricity Cost Optimization. This empowers users to optimize electricity costs precisely, delivering a seamless experience in effective charging management.

# U-Energy Platform

## Resource Sharing

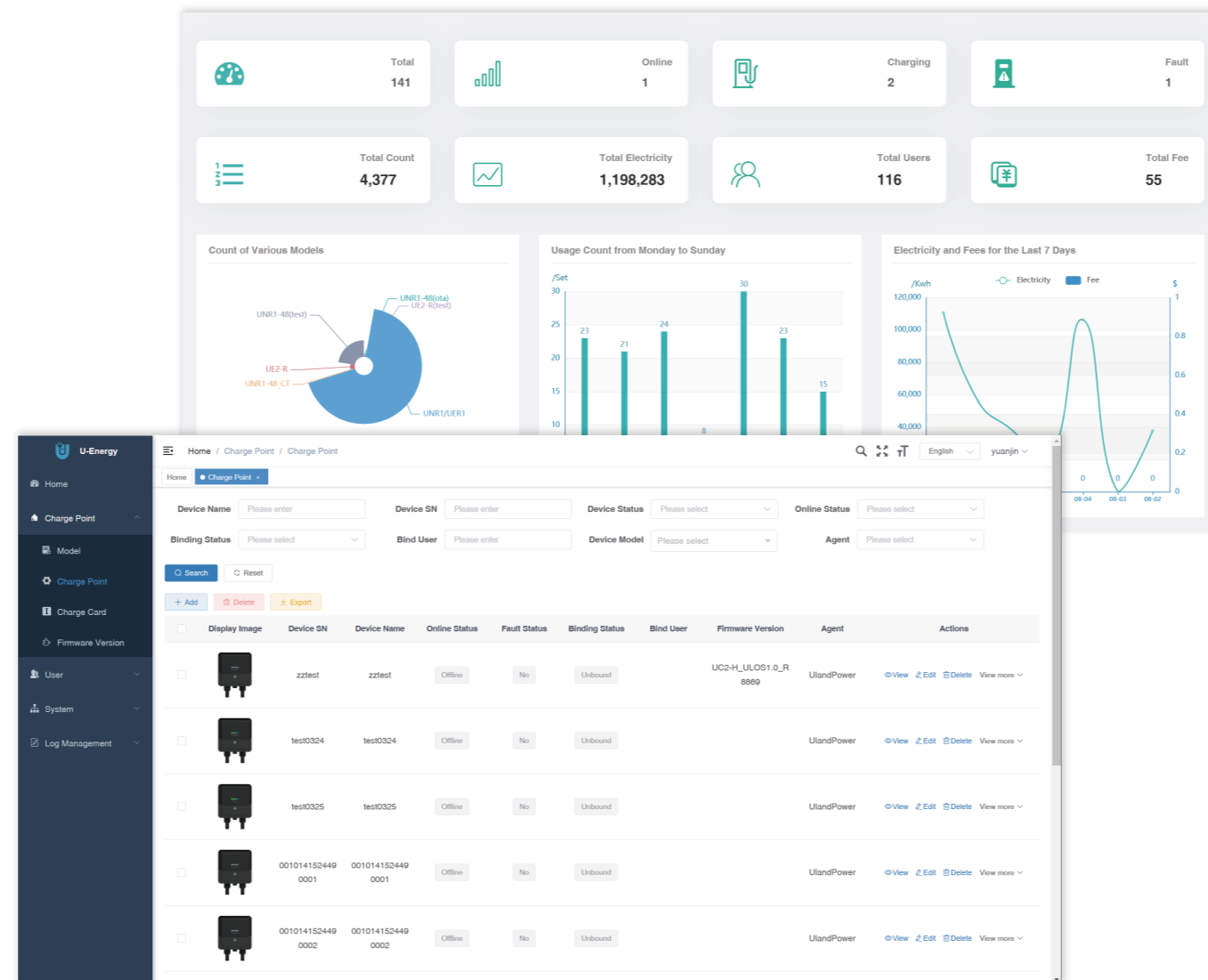
The platform achieves data isolation between users and charging stations, ensuring information security.

## Smart Dashboard

Displays real-time data for quick insights into charging station performance and operational status.

## Private Deployment

Supports private deployment to flexibly adapt to specific security and management needs.



## Global Access

The management backend supports access for global clients, enhancing operational convenience.

## Remote Management

Users worldwide can remotely configure charging stations via the app, improving efficiency.

## Data Analysis

Collecting charging station data and enabling remote diagnostics improve operational efficiency and reduce costs.

## Platform Overview

The platform, built on the SaaS model, supports private deployment and data isolation, enabling cloud management and real-time monitoring. By collecting charging station data, it reduces communication and maintenance costs, while enabling remote diagnostics and intelligent fault analysis to minimize repair time and operational expenses.