



UNR1Pro AC Charger Series

Level 2



NEMA 14-50



Type 1 Plug



NACS Plug



Warranty 3 Years



40A/48A



FUZHOU ULANDPOWER TECHNOLOGY CO.,LTD.

✉ info@ulandpower.com

🌐 www.ulandpower.com

📍 Building 1, Wanfu Center, Keji East Road, High tech Zone, Fuzhou City, Fujian Province, China, ZIP CODE: 350108

Product Overview

The UNR1Pro Series residential charging station provides a modern and convenient smart home charging solution, available in two versions with Type 1 and NACS connectors. It offers optional output choices of NEMA plugs or hardwired connections.

Highlights

Powerful

Up to 48A for fast charging



Smart

Smart APP via WIFI or Bluetooth,
easily control



Flexible

NEMA plug or a hardwire connection
installation to suit any need



Durability

IP66/IK08, for any indoor or outdoor
location



Reliable

UL compliant, Energy Star, ETL and
FCC certified



Compatible

Supports all SAE J1772 Type 1 and
Tesla NACS standard EVs, making it
versatile for various EV models



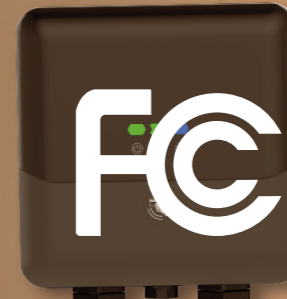
Model Selection



Models-UNR1Pro (Type1)

Model No.	UNR1Pro-A40T	UNR1Pro-A48T
ELECTRICAL SPECIFICATION		
Input Connector	NEMA Plug cable * 1m, Hardwired Optional	Hardwired * 1m
Voltage	208/240 VAC	
Amperage/Power Output	40A/9.6KW	48A/11.5KW
Energy Metering Accuracy	±1%	
Mounting Option	Wall or Pedestal mount, Pedestal Optional	
CHARGING INTERFACE		
Charging Connector	SAE J1772 Type 1 Plug	
Charging Cable Length	25ft	
USER INTERACTION		
LED Status Indicator	POWER/CHARGING/CONNECT/FAULT status indication	
Reset button	Reset or restore factory Settings	
RFID	ISO14443 Type A&B	
Remote control	U-Charger APP	
COMMUNICATION		
Network Interface	WiFi/BT	
Extend	RS485 * 1	
	LAN Optional, EnerSync Optional	
SAFETY & COMPLIANCE		
Ground Fault Detection	CCID20	
Surge Protection	6kV @3,000A	
Protection	UVP(UnderVoltage), OVP(OverVoltage), OCP(OverCurrent), OTP(OverTemp), Control Pilot Fault Protection, Relay-sticking protection, Ground Fault Protection	
Safety Compliance	UL 2594 / CSA C22.2 No. 280-16,UL 2231-1 / CSA C22.2 No. 281.1-12,UL 2231-2 / CSA C22.2 No. 281.2-12	
Certification	ETL/FCC/EnergyStar	
ENVIRONMENTAL		
Operating Temperature	-22°F to 131°F (-30°C to 55°C)	
Operating Humidity	5%~95% RH, Non-condensing	
Operating Altitude	≤2000m, No Derating	
Enclosure Rating	Type 3	
SPECIFICATION		
Net Weight	6.4KG	6.8KG
Gross Weight	8.4KG	8.7KG
Product Dimensions	220W*220D*101.5H(mm)	
Package Dimensions	395W*375D*295H(mm)	

Model Selection



Models-UNR1Pro (NACS)

Model No.	UNR1Pro-A40N	UNR1Pro-A48N
ELECTRICAL SPECIFICATION		
Input Connector	NEMA Plug cable * 1m, Hardwired Optional	Hardwired * 1m
Voltage	208/240 VAC	
Amperage/Power Output	40A/9.6KW	48A/11.5KW
Energy Metering Accuracy	±1%	
Mounting Option	Wall or Pedestal mount, Pedestal Optional	
CHARGING INTERFACE		
Charging Connector	SAE J3400,NACS Plug	
Charging Cable Length	25ft	
USER INTERACTION		
LED Status Indicator	POWER/CHARGING/CONNECT/FAULT status indication	
Reset button	Reset or restore factory Settings	
RFID	ISO14443 Type A&B	
Remote control	U-Charger APP	
COMMUNICATION		
Network Interface	WiFi/BT	
Extend	RS485 * 1	
	LAN Optional, EnerSync Optional	
SAFETY & COMPLIANCE		
Ground Fault Detection	CCID20	
Surge Protection	6kV @3,000A	
Protection	UVP(UnderVoltage), OVP(OverVoltage), OCP(OverCurrent), OTP(OverTemp), Control Pilot Fault Protection, Relay-sticking protection, Ground Fault Protection	
Safety Compliance	UL 2594 / CSA C22.2 No. 280-16,UL 2231-1 / CSA C22.2 No. 281.1-12,UL 2231-2 / CSA C22.2 No. 281.2-12	
Certification	ETL/FCC/EnergyStar	
ENVIRONMENTAL		
Operating Temperature	-22°F to 131°F (-30°C to 55°C)	
Operating Humidity	5%~95% RH, Non-condensing	
Operating Altitude	≤2000m, No Derating	
Enclosure Rating	Type 3	
SPECIFICATION		
Net Weight	6.4KG	6.8KG
Gross Weight	8.4KG	8.7KG
Product Dimensions	220W*220D*101.5H(mm)	
Package Dimensions	395W*375D*295H(mm)	

General Specifications - *EnerSync Power Monitor*



Input	110-240 VAC , 50-60Hz
Measurement Accuracy	±1%
Maximum voltage sense range	264VAC L-N per channel
264VAC L-N per channel	3
Current Measurement Channels	200A: 3 100A: 3
Power usage	<3 watts
Wi-Fi	2.4 GHz IEEE 802.11b/g/n
Ethernet	10/100Base-T, IEEE 802.3
Operating conditions	-22° to 140° F (-30° to 60° C) 0 to 95% RH Up to 3,000 meters
Certifications	Safety: UL 61010, UL 2808 EMC: FCC, ISED, CE, PSE, UKCA
Measurement Category	200A CT Ports: Measurement Category IV 100A CT Ports: Measurement Category III
CT Wire Length	1m
CT Inside Diameter	200A CT: 22mm 100A CT: 15mm

CT-Clamp

200A



* 2 or 3

100A



* 2 or 3

U-Charger APP

Smart Electricity Cost Optimization

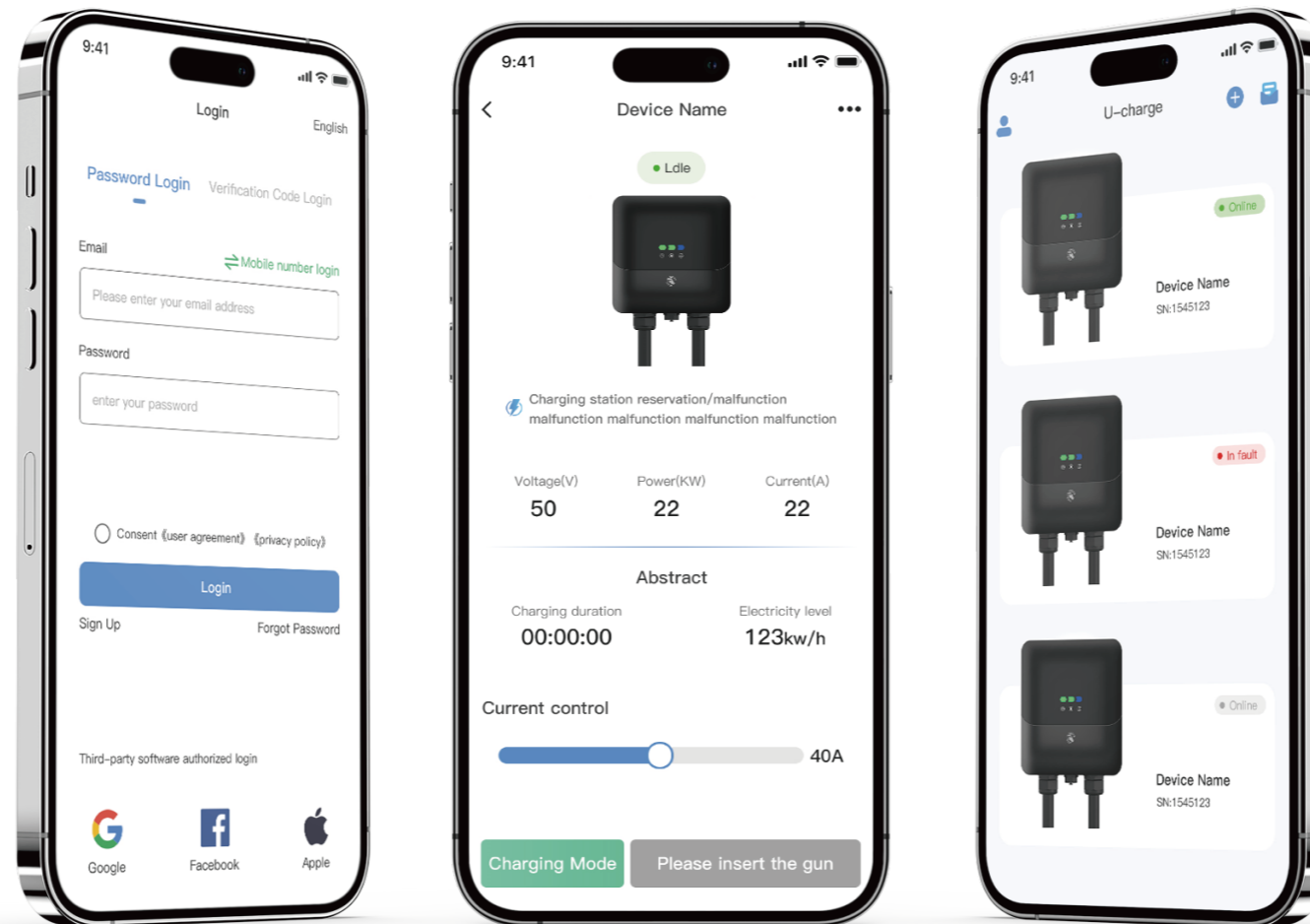
Smartly calculates the best charging times and current to help users reduce electricity costs and achieve energy savings.

Real-Time Alert Notifications

Timely alerts for charging status, enhancing management convenience.

Operational Status Monitoring

Comprehensive monitoring of equipment performance to ensure stable operation.



Charging Data and Fault Analysis

Enhance safety and management by quickly identifying problems through data analysis.

User-Friendly Interface

A simple and intuitive design ensures users can easily navigate the app, enhancing their experience.

Customizable Features

Offers personalized settings based on customer needs to meet specific user requirements.

APP Overview

The app enhances charging safety through real-time monitoring, intelligent fault analysis, and instant alerts, while featuring Smart Electricity Cost Optimization. This empowers users to optimize electricity costs precisely, delivering a seamless experience in effective charging management.

U-Energy Platform

Resource Sharing

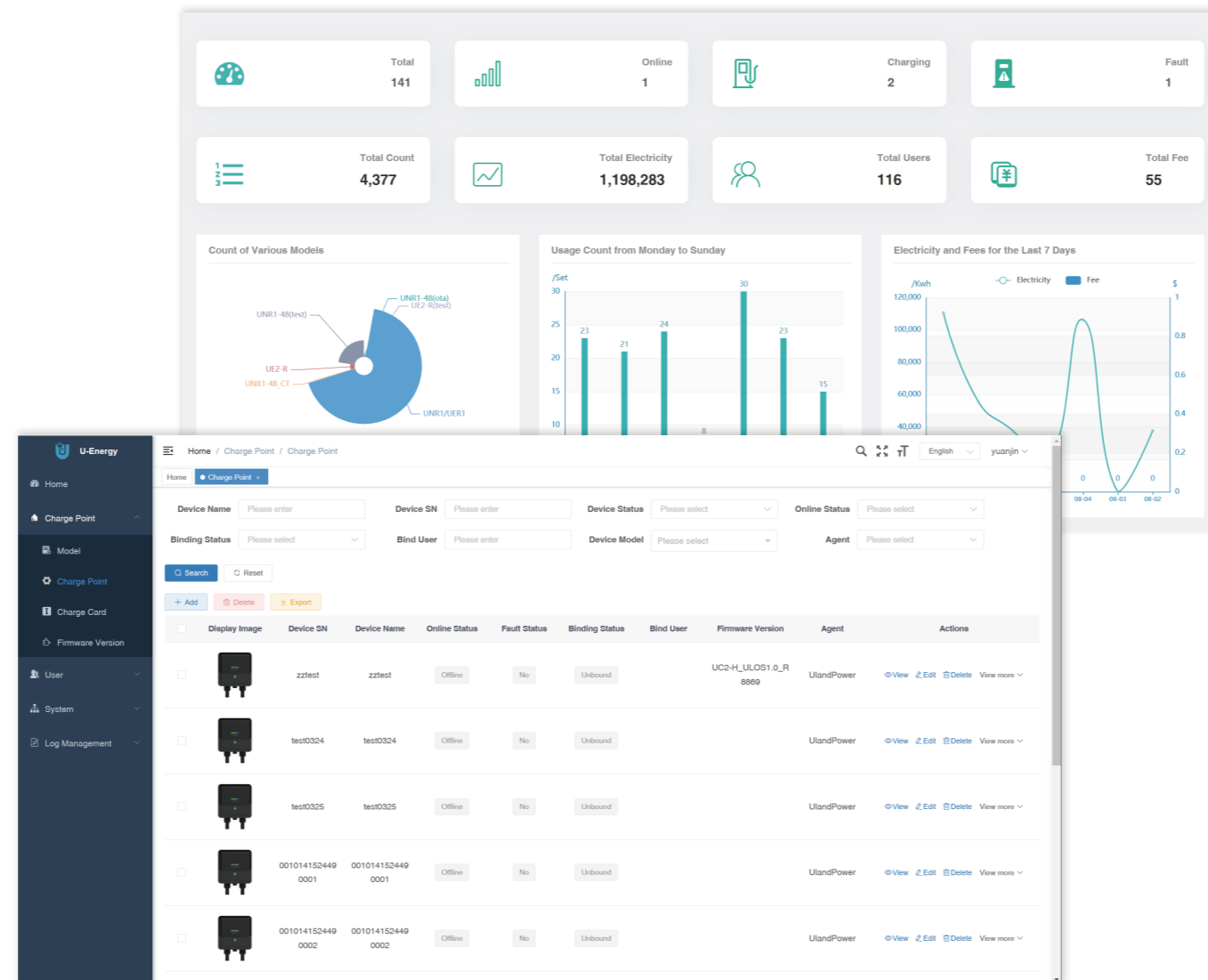
The platform achieves data isolation between users and charging stations, ensuring information security.

Smart Dashboard

Displays real-time data for quick insights into charging station performance and operational status.

Private Deployment

Supports private deployment to flexibly adapt to specific security and management needs.



Global Access

The management backend supports access for global clients, enhancing operational convenience.

Remote Management

Users worldwide can remotely configure charging stations via the app, improving efficiency.

Data Analysis

Collecting charging station data and enabling remote diagnostics improve operational efficiency and reduce costs.

Platform Overview

The platform, built on the SaaS model, supports private deployment and data isolation, enabling cloud management and real-time monitoring. By collecting charging station data, it reduces communication and maintenance costs, while enabling remote diagnostics and intelligent fault analysis to minimize repair time and operational expenses.