

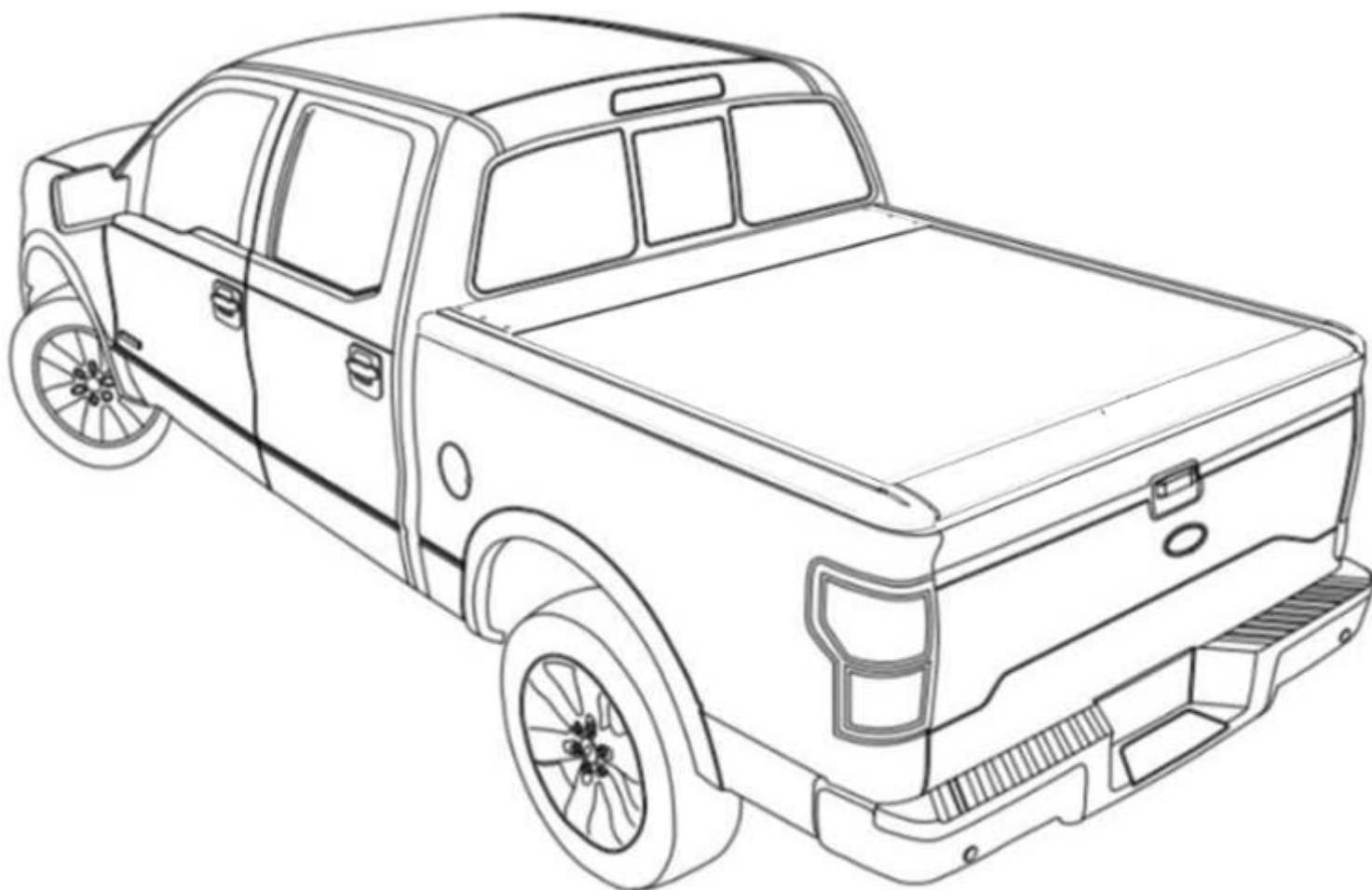
User's Manual of Electric Retractable Tonneau Cover



**** Please scan the QR code to download the APP**

**** Initial password:888888**

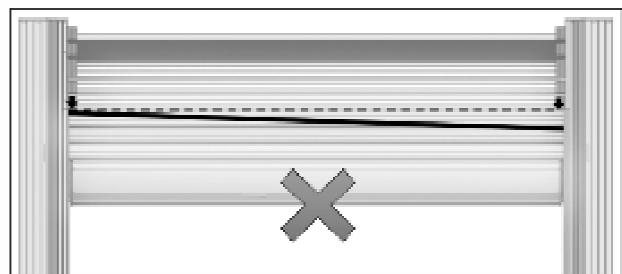
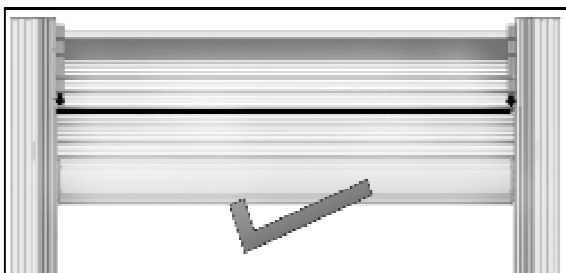
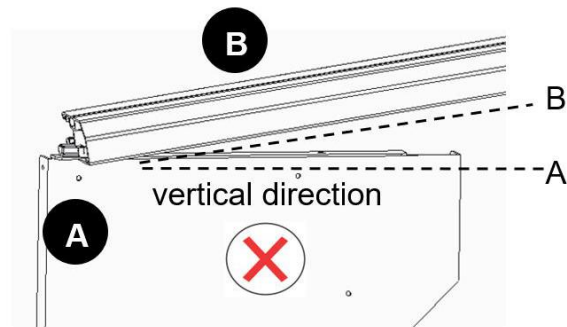
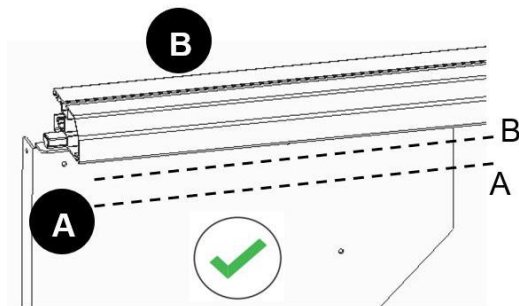
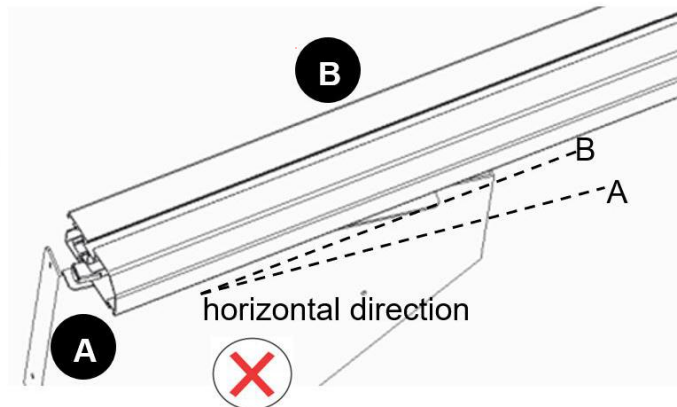
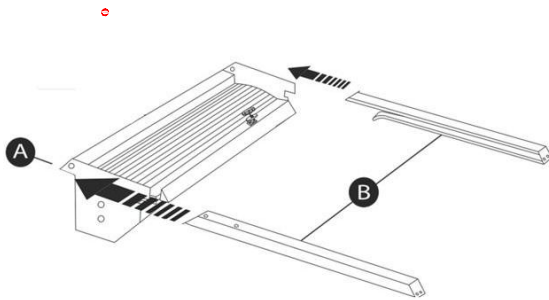
**** Please change the password after login!**



Accessories List :

		
A1-Canister	A2-Track	A3- Top Cover
		
A4- Positioning Aluminum Bar	A5-Drain Tube	A6- Foaming Adhesive Tape
		
A7- Bolt M8X40 Bolt M8X50 6crew washer	A8- Rubber Cover of Track Front End	A9- Rubber Washer of Drain Tube
		
A10- Hose Clamps	A11- Clamp Bracket	A12- Lubricant (for rust-proof and noise-reducing)
		
B1-Track Mounting Kit M6*12 screw S=5 Allen Wrench	B2-Top Cover Mounting Kit Hex Flat Screw 5*6 M5 Rubber Washer M5 Rubber Screw Cap S=3 Allen Wrench	B3-T-shape bolt M6*20 M6 hexagon nut with flange
		
B4-Bracket Mounting Kit A13:5.5*32 Screw with washer Self-tapping screw+ M6 Flat Washer	Remote Controller 2pcs	Nylon cable ties

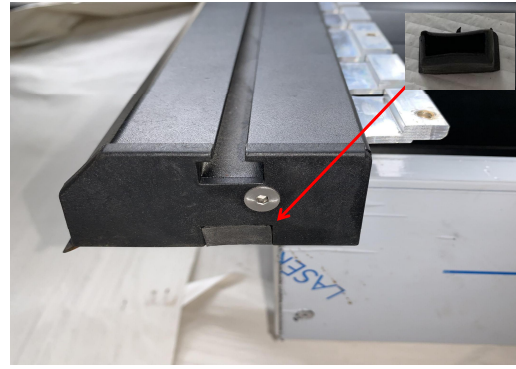
Accessories List :



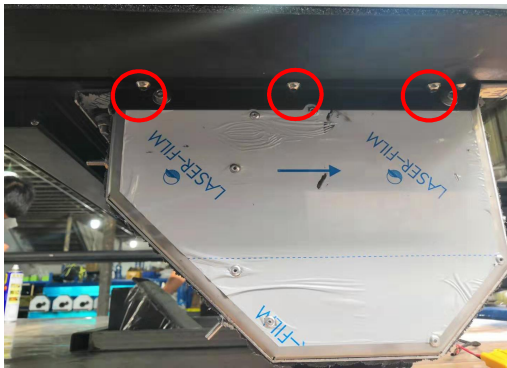
Installation Steps:



Check if the side bars and the front middle bar are horizontal before installing



Install the A8 Rubber Cover of Track Front End here



Using B1-Track Mounting Kit to install A2 Track on A1 casing, and fasten the screws.



Using B2-Top Cover Mounting Kit to install A3 Top Cover and apply waterproof glue on both sides. The length of waterproof glue shall be no less than 140mm

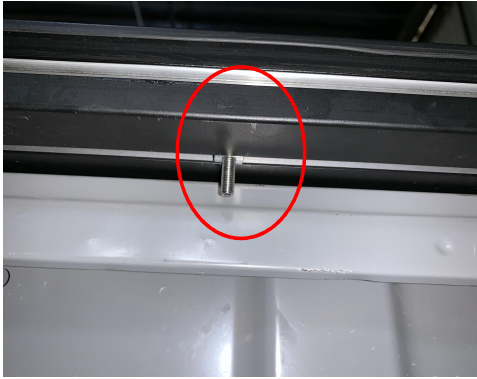


Placed the assembled parts in the bed (this will require 2 people)



**Using B3- Clamp Bracket Mounting Kit to install the Track.
Insert the sliding nut M6 into the track and install with M6*25 screw**

Installation Steps:



Place the assembled sliding nut kit on the track and slide to proper place



Adjust the Track to the center position with aluminum bar



After positioning well, then use M6 Flat Washer and M6 nut to fasten it.



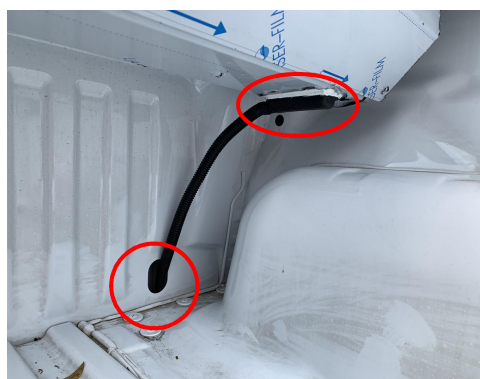
Adjust the horizontal level through this screw and bracket



Adjust the horizontal level through this screw and bracket



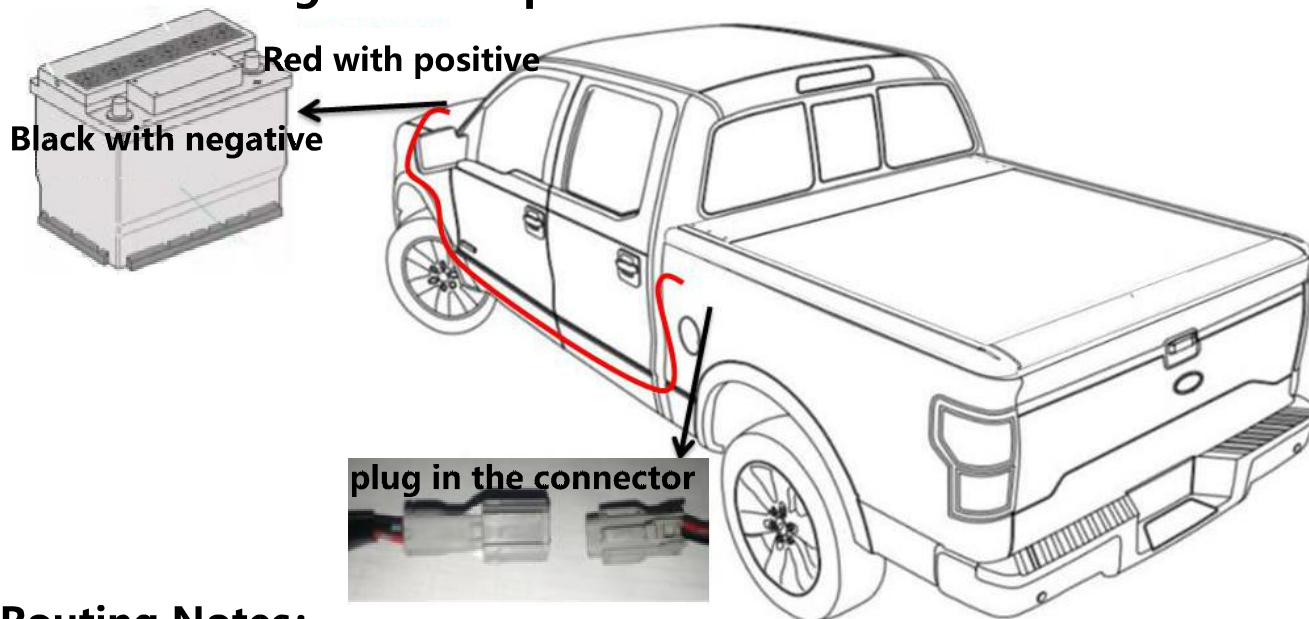
Install one end of the drain tube on the Track with Hose Clamps, and route the other end of the drain tubes out from the holes.



Install one end of the drain tube on the Track with Hose Clamps, and route the other end of the drain tubes out from the holes.

Controller Installation Instruction

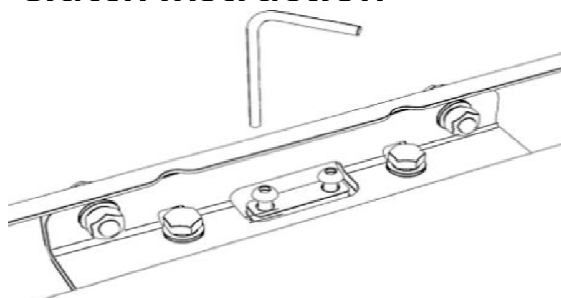
The wiring route of power cable is as below in red color



Routing Notes:

1. Recommend wiring routing sequence: engine compartment → wheel trims → truck bed
2. Most vehicles already have holes on truck bed, please route the cables through the existing holes in to the truck bed. For vehicles without the holes, suggest drilling a $\phi 20\text{mm}$ diameter hole.
3. Please make sure to avoid engine housing, exhaust pipe and other hot parts while wiring routing.

Clutch Instruction



1. Dismantle the 2 pcs screws and fixing plate in following picture with S=5 hex wrench.

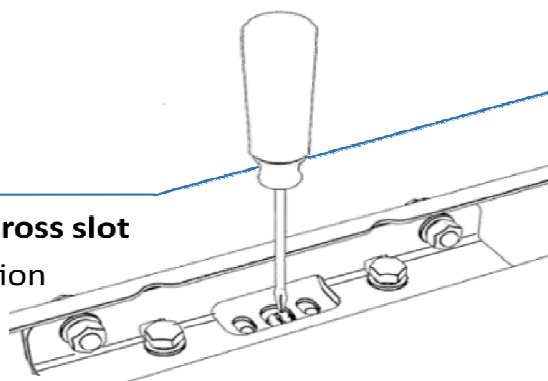
2. Use a screwdriver to rotate the middle cross slot

2.1. Rotate counterclockwise until the rotation

axis is in parallel with the black bracket,

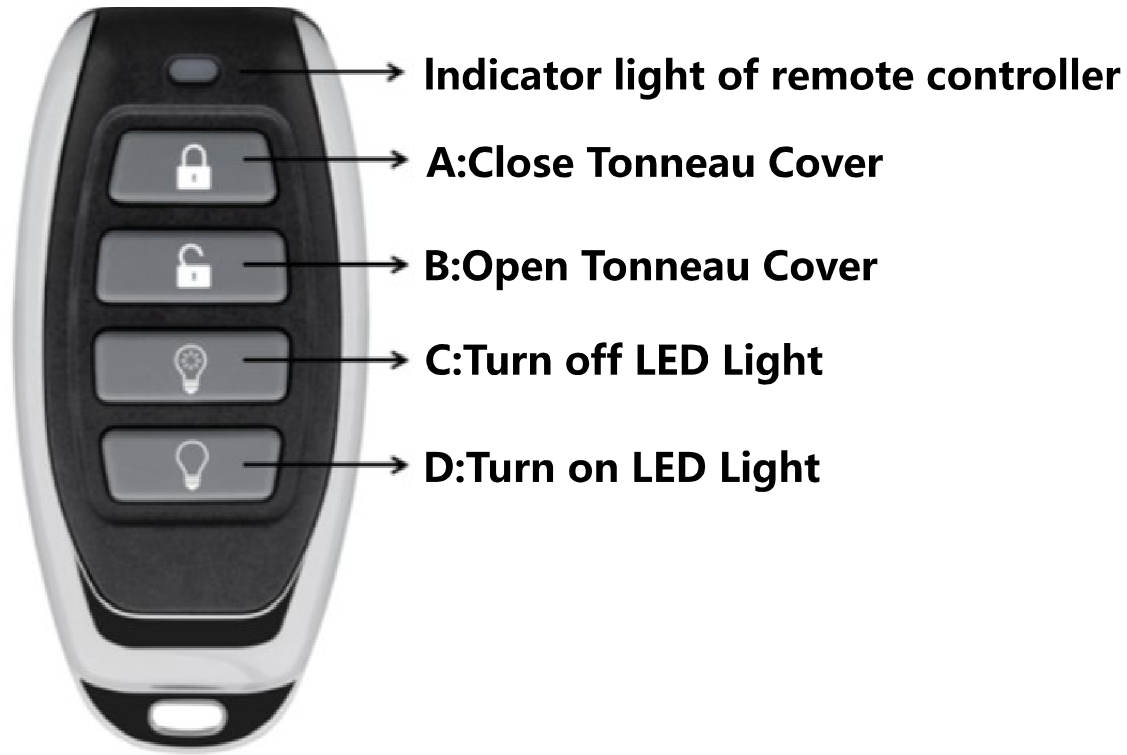
then the gear device shall be separated,

thus switching to manual mode to manually open/close the Tonneau Cover.



2.2. Rotate back clockwise until the rotation axis can't turn, then use remote controller to close the Tonneau Cover. During closing process, rotate clockwise again until the rotation axis is in parallel with the black bracket, then install back the fixing plate. Thus switching to normal electric mode.





Remote Controller Function Instruction



1.Indicator light of remote controller: When any one of the buttons is pressed, the signal indicator lights up.

2.Protection Cover: Please push the protection cover up when not using in case of any mis-operation.

Instruction of buttons:

Buttons	Name	Description
	Turn on LED Light	Press the button to turn off the LED Light.
	Turn on LED Light	1. Press the button to turn on the LED Light if the light is off, and brightness restored to its previous brightness. 2. Press the button to switch to the next level brightness if the light is on(3 level brightness cycle switch)
	Close Tonneau Cover	1.Press the button to start closing the Tonneau Cover if it is in static mode. 2.Press the button to stop the Tonneau Cover if it is in operating mode.
	Open Tonneau Cover	1.Press the button to start opening the Tonneau Cover if it is in static mode. 2.Press the button to stop the Tonneau Cover if it is in operating mode.



Helpful Maintenance Hints

1.To assure quiet and smooth operation of your roller, please regularly clean and lubricate the rail tracks and canister. It is recommended every 3 months or 6,000 km, or when you use it in muddy water, desert, Gobi desert, etc. Please focus on cleaning the side rails and the spiral track inside the container which may have sand, sludge, gravel and other sundry inside. Please use the lubricants we offered or other brand silicone oil-type lubricants after cleaning, and increase the frequency of using lubricants based on actual situation. Avoid using petroleum-based product on rubber seals. Lighter oil spray lubes with PTFE (Teflon) seem to work the best when regularly wiped out and reapplied.

2.Avoid the thicker grease type because they tend to get sticky and gather a lot of dust and debris and then later dry out. Also Avoid the silicone dry lubes as they tend to cause squealing noise between the sliding components.

3.Please make sure the roller is in a stop status before cleaning/lubricating, to avoid causing extrusion or collision injury.

4.To clean the rail tracks and the spiral track inside the container, please apply the lubricant to a rag and wipe it inside of the rail tracks, along the underside of the sweep seal and the top of the wear strip. Repeat until the dust has been removed. You can also use a high-pressure water gun if necessary and then make sure all components have been lubricated. Please DO NOT direct aiming the high-pressure water gun to the motor/ECU/connector when cleaning, and do some necessary waterproof protection for connectors/plugs.

5.To clean the canister, remove the rail stops, or vertical rails as required, and run the cover out far enough that you can get into the canister. Apply the lubricant to a rag and wipe the inside of the canister, including all components inside the canister. Ensure the Drain Tubes are clear of any debris or blockage. Reassembly the cover.

6.If you find that the brightness of the remote control signal indicator light is obviously weakened, or the button indicator light does not on, please replace the battery in time (battery model: CR2016).

7.To keep the roller in tip-top condition, we recommend washing it the same as caring for your truck finish. A lack of proper cleaning and maintenance can affect the operation of the product and reduce its life.