



JIANGSU JINYO INDUSTRIAL EQUIPMENTS INC

Address: No.13,Shibawan,Binhu District,Wuxi City,Jiangsu Province,China

Email: ada@jinyoindustry.com

Tel: 0086-19963437088



WeChat



whatsApp

JIANGSU JINYO INDUSTRIAL EQUIPMENTS INC

Enterprise Vision



Win-win cooperation, Casting quality
Leading industry, Serving the world



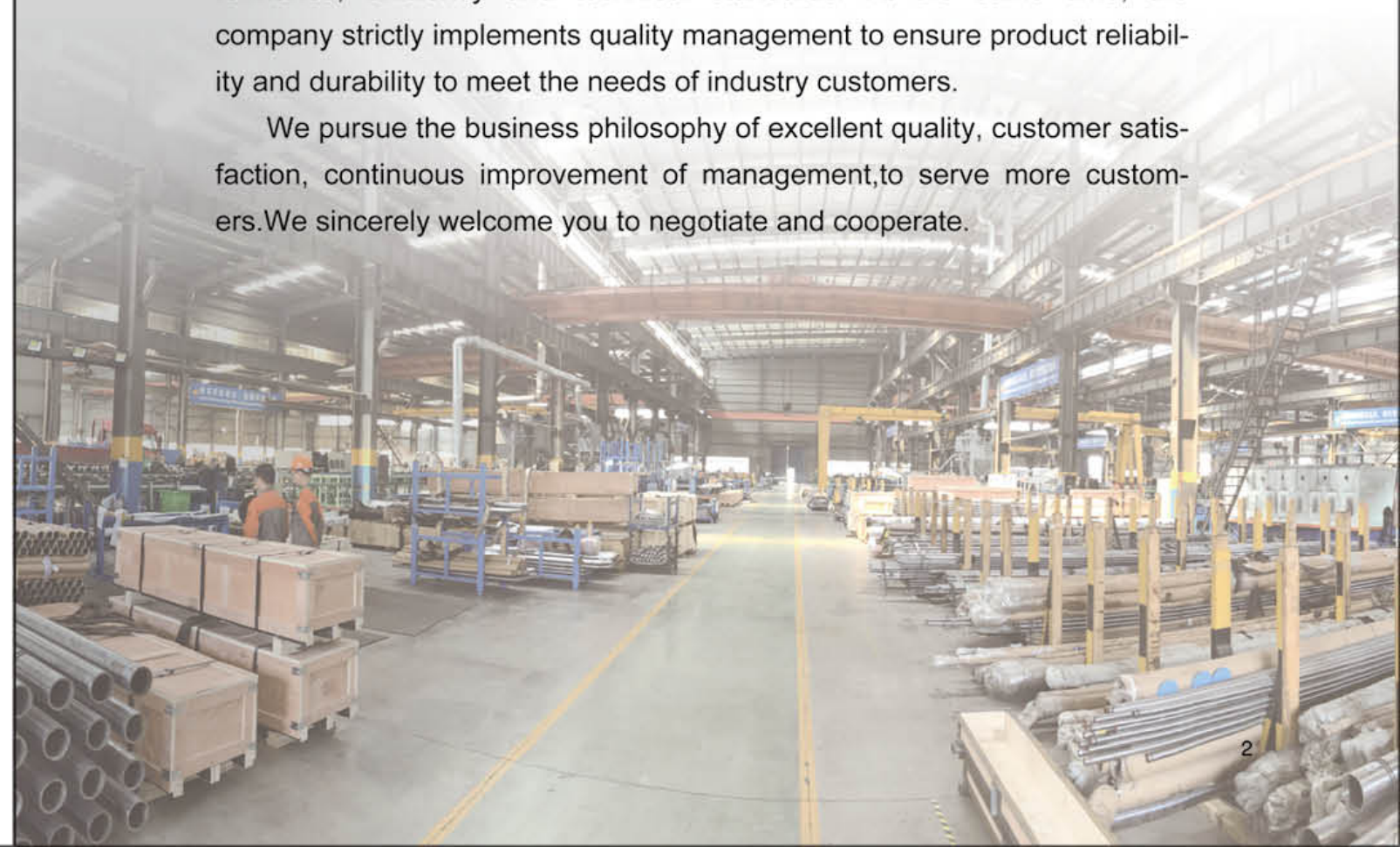
Company Introduction

JIANGSU JINYO INDUSTRIAL EQUIPMENTS INC is located in Wuxi, JiangSu Province, China. The company is an enterprise specializing in the production and sales of precision steel pipes. In particular, we have unique development and production capabilities for non-standard customized hydraulic cylinder tube and chrome-plated rod products.

The company's main products: large-diameter non-standard hydraulic cylinder barrels, customized chrome-plated chrome rods, high-quality pins and bushing series products, which are suitable for engineering machinery, construction machinery, agricultural machinery, mining machinery and other fields.

The company's main production equipment: CNC lathes, boring machines, honing machines, lathes, and calibrating machines. The company focuses on technological innovation and product research and development, and has a professional production team dedicated to improving product performance, efficiency and technical standards. At the same time, the company strictly implements quality management to ensure product reliability and durability to meet the needs of industry customers.

We pursue the business philosophy of excellent quality, customer satisfaction, continuous improvement of management, to serve more customers. We sincerely welcome you to negotiate and cooperate.



Product Contents



Non-Standard Honed Tube



Non-Standard Chrome Rod



Steel Bushings



Bucket Pins/Shaft

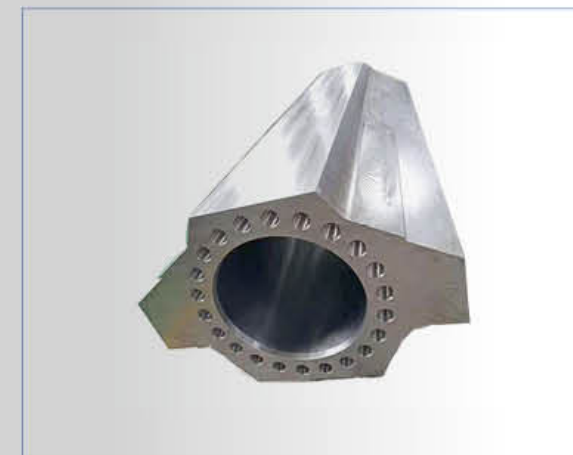
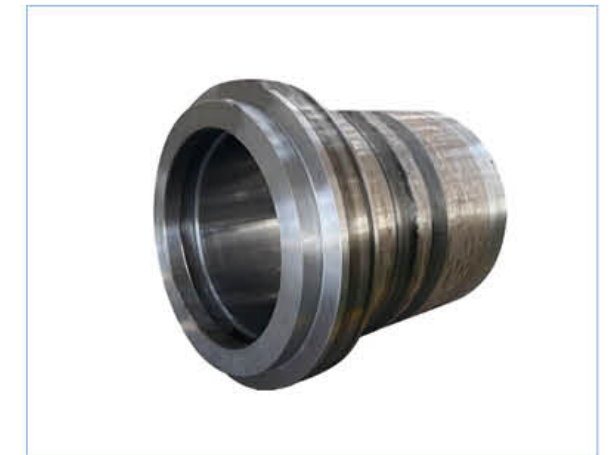
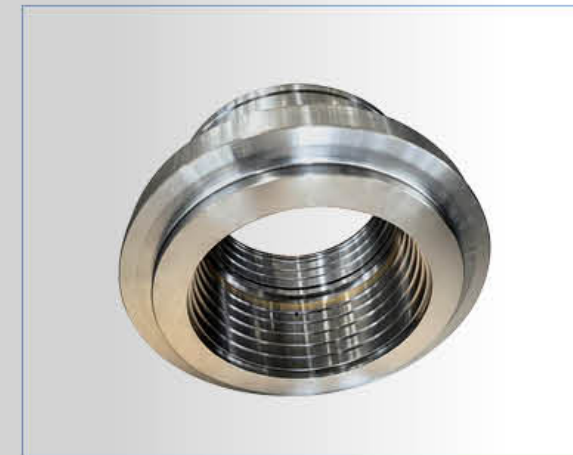
① Non-Standard Honed Tube

Product Feature

- ◆ Large diameter non-standard hydraulic cylinder tube & Customizable honed tube
- ◆ Simple structure and reliable operation, can be connected to a buffer device.
- ◆ Application to construction machinery, lifting and transportation machinery, vehicles, etc.



Customized Products Show



① Non-Standard Honed Tube

Product Parameters

Chemical Composition (%)									
Steel grade	C	Si	Mn	P	S	Cr	Ni	V	Al
				≤	≤	≤	≤	≤	≥
C20	0.17-0.24	0.17-0.37	0.35-0.65	0.035	0.035	0.250	0.250	—	—
CK45	0.42-0.5	0.17-0.37	0.5-0.8	0.025	0.020	0.250	0.300	—	—
Q355B	≤0.2	≤0.5	1.00-1.60	0.030	0.030	0.030	0.250	0.080	—
Q355D	≤0.2	≤0.5	1.00-1.60	0.030	0.030	0.250	0.250	0.150	0.015
E355(ST52)	≤0.22	≤0.55	≤1.6	0.025	0.025	0.250	0.250	—	—
SAE1026	0.22-0.28	0.15-0.35	0.6-0.9	0.040	0.050	—	—	—	—
4130	0.28-0.33	0.15-0.35	0.40-0.60	0.040	0.040	0.80-1.10	—	—	—
4140	0.36-0.43	0.15-0.35	0.75-1.00	0.040	0.040	0.80-1.10	—	—	—

Mechanical Property							
Delivery condition	cold finished(hard)(BK)			Cold drawn and stress-relieved(BK+S)			
	Steel grade	Rm MPa	Elongation A5(%)	Rm MPa	ReH MPa	Elongation A5(%)	A5(%)
C20	≥550	≥5	≥520	≥375	≥15		
CK45	≥645	≥5	≥600	≥520	≥10		
Q355B	≥640	≥5	≥600	≥520	≥14		
Q355D	≥640	≥5	≥600	≥520	≥14		
E355(ST52)	≥640	≥5	≥600	≥520	≥14		
SAE1026	≥640	≥5	≥600	≥520	≥15		

Tolerance ON ID (mm)				
Tolerance	I.D Tolerance			Tolerance of wall thickness(O.D)
	Size of I.D	H8	H9	
30	0.033	0.052	0.084	
>30-50	0.039	0.062	0.1	
>50-80	0.046	0.074	0.12	<120mm ±5%
>80-120	0.054	0.087	0.14	≥120mm ±7.5%
>120-180	0.063	0.1	0.16	>210mm ±10%
>180-250	0.072	0.115	0.185	
>250-315	0.081	0.13	0.21	
>315-400	0.089	0.14	0.23	

① Non-Standard Honed Tube

Hydraulic Cylinder Tube/Honed Tube Size

Tube ID(mm)	Length	straightness (mm/m)	Tolerance on ID	Tolerance on WT	ID Roughness (μm)
40-150	≤12m	0.2-0.5	H8-H10	±5%	≤0.8
50-300	≤8m	0.2-0.5	H8-H10	±5%	≤0.4
40-400	≤12m	0.2-0.5	H8-H10	±5%	≤1.6
250-400	≤8m	0.2-0.5	H8-H10	±5%	≤0.8

Production View



① Non-Standard Honed Tube

Production Equipments



Lathe



CNC Lathe



Honing Machine



Boring Machine



Honing Machine



Calibration Machine

② Non-Standard Chrome Rod

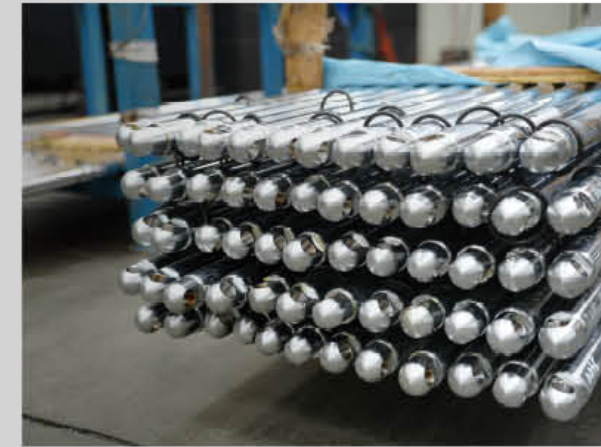
Product Feature

- ◆ Customizable chrome rod/shaft & Machined Piston Rod
- ◆ Excellent corrosion resistance, anti-wear and high hardness
- ◆ Application to hydraulic cylinders, pressure cylinders, mechanical transmissions fields.



Non-Standard Chrome Rod

Customized Products Show



② Non-Standard Chrome Rod

Product Parameters

Chemical Composition (%)							
Material	C	Mn	Si	S	P	V	Cr
CK45	0.42-0.50	0.50-0.80	0.04	0.035	0.035	—	—
ST52	0.22	1.6	0.55	0.035	0.04	—	—
SAE10V45	0.40-0.48	0.80-1.40	0.15-0.35	0.15	0.035	0.15	0.25
42CrMo4	0.38-0.45	0.60-0.90	0.15-0.40	0.03	0.03	—	0.90-1.20
40Cr	0.37-0.45	0.50-0.80	0.17-0.37	—	—	—	0.80-1.1

Mechanical Properties					
Material	T.S (N/mm ²)	Y.S (N/mm ²)	EL %(min)	Charpy	Condition
CK45	610	355	15	>41J	Hard chrome rod
CK45	800	630	20	>41J	Q+T
ST52	500	355	22	—	Hard chrome rod
42CrMo4	980	850	14	>47J	Q+T
40Cr	1000	800	10	—	Q+T

Chrome Rod Delivery Condition

Hard chrome rod	Induction hardened chrome rod
Quenched & Tempered chrome rod	Induction hardened with Q&T chrome rod

Corrosion Resistance

Induction Hardness	50-60HRC
Induction Layer	1.2-3mm

② Non-Standard Chrome Rod

Production Equipments & Workshop



Workshop



Lathe



CNC Lathe

③ Steel Bushings

Product Introduction

- ◆ Product Name: Steel Bushings
- ◆ Material: 42CrMo 45# 40Cr 20CrMo GCr15
- ◆ Hardness: HRC53-60
- ◆ Operating temperature range: -100~+350°C
- ◆ Application: excavators and loaders construction machinery
- ◆ Customization: Product size can be customized according to customer requirements



Application industry

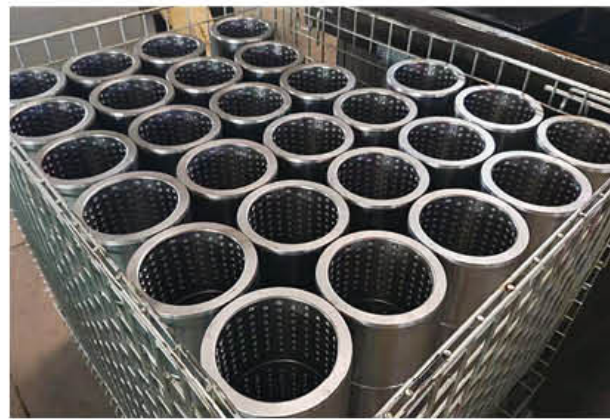


③ Steel Bushings



③ Steel Bushings

Production Equipments



Box-Type Carburizing Furnace



Oil Tank Engraving Machine



Drill Machine

③ Steel Bushings

Product Specifications

Size (mm)	Size (mm)	Size (mm)	Size (mm)	Size (mm)
30*40*30	45*65*50	55*65*80	60*80*70	65*80+85
30*40*40	45*65*60	55*65*85	60*80*75	65*80*90
30*40*45	50*60*35	55*70*40	60*80*80	65*80*95
30*40*50	50*60*40	55*70*45	60*80*85	65*80*100
30*40*60	50*60*45	55*70*50	60*80*90	65*85*60
30*45*40	50*60*50	55*70*55	60*85*45	65*85*65
30*45*50	50*60*60	55*70*60	60*85*50	65*85*70
30*50*40	50*60*70	5*70*65	60*85*55	65*85*80
30*50*50	50*60*80	55*70*70	60*85*60	65*85*90
35*45*35	50*60+90	55*70*80	60*85*65	65*85*100
35*45*40	40*65*50	55*75*50	60*85*70	65*90*65
35*45*45	40*65*55	55*75*55	60*85*75	65*90*70
35*45*50	40*65*60	55*75*60	60+85*80	65*95*65
35*45*60	50*65*40	55*75*70	60*85*85	65*95*60
35*50*35	50*65*40	55*75*80	60*85*90	70*80*50
35*50*40	50*65*50	50*80*60	60*90*60	70*80*55
35*50*50	50*65*55	60*70*40	60*90*70	70*80*60
40*50*55	50*65*60	60*70*50	65*75*40	70*80*65
40*50*60	50*65*65	60*70*55	65*75*50	70*80*70
40*50*30	50*65*70	60*70*60	65*75*55	70*80*75
40*50*30	50*65*75	60*70*65	65*75*60	70*80*80
40*55*40	50*65*80	60*70*70	65*75*65	70*80*85
40*55*40	50*70*40	60*70*75	65*75*70	70*80*90
40*55*45	50*70*45	60*70*80	65*75*75	70*80*95
40*55*50	50*70+50	60+70*90	65*75*80	70*85*40
40*55*60	50*70*55	60*75*40	65*75*90	70*85*45
40*60*40	50*70*60	60*75*45	65*75*100	70*85*50
40*60*50	50*70*70	60+75*50	60*95*60	70*85*55
40*60*60	50*70*80	60*75*55	65*77*70	70*85*60
45*55*45	50*75*50	60*75*60	65*77*90	70*85*65
45*55*50	50*75*60	60+75*65	65*80*35	70+85*70
45*55*55	50*75*70	60*75*70	65*80*40	70*85*75
45*55*60	55*65*40	60*75*75	65*80*45	70*85*80
45*55*65	55*65*45	60*75*80	65*80*50	70+85*85
45*55*70	55*65*50	60*75*90	65*80*55	70*85*90
45*60*45	55*65*55	60*80*45	65*80*60	70*85*95
45*60*50	55*65*60	60*80*50	65*80*65	70*85*100
45*60*55	55*65*65	60*80*55	65*80*70	70*86*70
45*60*60	55*65*70	60*80*60	65+80*75	70*86*80
45*65*45	55*65*75	60*80*65	65*80*80	70*90*50

④ Bucket Pins/Shaft

Product Introduction

- ◆ Product name: Bucket Pin/Shaft
- ◆ Material: 45# carbon steel, 40Cr alloy steel, 42CrMo
- ◆ Surface Treatment: quenching and tempering + high frequency quenching
- ◆ Hardness: HRC 55-60
- ◆ Application: Excavator Loader
- ◆ Customization: Product size can be customized according to customer requirements



④ Bucket Pins/Shaft

Production View



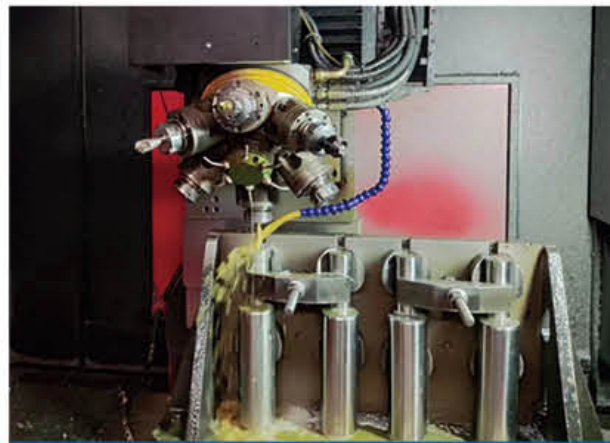
CNC Machining Production Workshop

④ Bucket Pins/Shaft

Production Equipments



Grinding Machine



Pin Shaft Drilling Machine



Pin Shaft Welding Machine



Drilling Machine



Medium And High Frequency Induction Equipment

④ Bucket Pins/Shaft

Product Specifications

Size (mm)	Size (mm)	Size (mm)	Size (mm)	Size (mm)
45*55*45	60*75*70	75*85*75	90*106*90	110*125*140
45*55*50	60*75*80	80*100*60	90*106*100	110*125*160
45*55*55	70*80*95	80*100*65	90*106*110	110*126*100
45*55*60	70*85*40	80*100*70	90*106*120	110*126*110
45*55*65	70*85*45	80*100*80	90*106*130	110*130*70
45*55*70	70*85*50	80*100*85	90*110*70	110*130*80
45*60*45	70*85*55	80*100*90	90*110*80	110*130*90
45*60*50	70*85*60	80*100*95	90*110*90	110*130*100
45*60*55	70*85*65	80*100*100	90*110*95	110*130*120
45*60*60	70*85*70	80*100*110	90*110*100	110*130*130
45*65*45	70*85*75	80*105*50	90*110*120	110*130*140
45*65*50	70*85*80	80*105*55	90*115*90	110*135*85
45*65*60	70*85*85	80*105*60	90*115*100	110*135*90
50*60*50	70*85*90	80*105*65	90*120*90	110*135*100
50*60*60	70*85*95	80*105*70	90*120*100	110*135*110
50*60*70	70*85*100	80*105*75	90*120*105	110*135*120
50*60*80	70*86*70	80*105*80	90*120*110	110*135*130
50*60*90	70*86*80	80*105*85	90*120*115	110*135*160
50*65*50	70*90*50	80*105*90	90*120*120	110*140*100
50*65*55	70*90*60	80*105*100	90*120*130	110*140*110
50*65*60	70*90*70	80*110*40	90*125*90	110*140*120
50*65*65	70*90*75	80*110*45	90*125*100	110*145*110
50*65*70	70*90*80	80*110*50	90*125*110	115*130*100
50*65*75	70*90*85	80*110*55	90*135*90	115*130*130
50*65*80	70*90*90	80*110*60	90*140*90	115*135*120
50*70*40	70*90*100	80*110*65	90*130*110	115*140*120
50*70*45	70*95*45	80*110*70	90*130*90	115*145*120
50*70*50	70*95*70	80*110*75	90*130*100	120*135*100
50*70*55	70*95*80	80*110*80	95*110*70	120*135*110
50*70*60	70*95*90	80*110*85	95*110*80	120*135*120
50*70*70	70*95*95	80*110*90	95*110*90	120*135*130
50*70*80	71*86*50	80*110*95	95*110*100	120*135*140
50*75*50	71*86*55	80*115*70	95*110*110	120*140*90
50*75*60	71*86*60	80*115*80	95*115*90	120*140*100
50*75*70	71*86*65	80*115*90	100*110*90	120*140*110
55*70*50	71*86*70	80*115*95	100*110*100	120*140*120
55*70*55	71*86*75	80*120*70	100*115*50	120*140*130
55*70*60	71*86*80	80*120*80	100*115*60	120*140*140
60*70*60	71*86*85	80*120*90	100*115*70	120*145*100
60*70*65	71*86*90	80*120*95	100*115*80	120*145*110
60*70*70	71*86*95	80*120*100	100*115*90	120*145*120
60*75*50	75*85*50	80*120*110	100*115*95	120*145*125
60*75*55	75*85*60	80*120*120	100*115*100	120*145*130
60*75*60	75*85*65	90*105*130	110*125*130	120*145*140
60*75*65	75*85*70	90*105*140	110*125*135	120*145*150