

## 公司简介



浙江方大合金科技有限公司，作为中国五金行业龙头企业方大控股有限公司的控股子公司，成立于2012年，是一家致力于生产适用于多个行业用硬质合金产品，集设计，开发，生产销售于一体的生产企业。特别是硬质合金电锤钻头，木工刀具，锯齿片，开孔器，矿山用钎片，球齿，棒材，板材，旋转锉，非标等复杂产品，在国内外享有盛誉。产品远销欧美，中东，东南亚，非洲等国家和地区，深受广大客户的欢迎和信赖。

依托母公司积聚的实力，我司装备了整套生产高档硬质合金所必需的生产，研发，检测设备。检测设备齐全，检验方法科学，管理先进。同时本公司技术力量雄厚，拥有一批经验丰富的生产技术骨干，还聘请了行业内经验丰富的粉料，模具，压制，烧结等高级工程师和教授级高工，他们在各自的领域都有着几十年的技术生产管理经验，为我司生产，研发高质量以及稳定质量的硬质合金产品打下了坚实的基础。目前公司已拥有五项专利，具有年产600吨各种类型的硬质合金制品的能力。

公司本着“以客户为中心，为用户提供全方位服务”为原则，提供各种以客户要求为中心设计生产的产品。同时，根据我司所具备的开发经验，为客户打造相关领域的产品。

## **C**ompany Overview



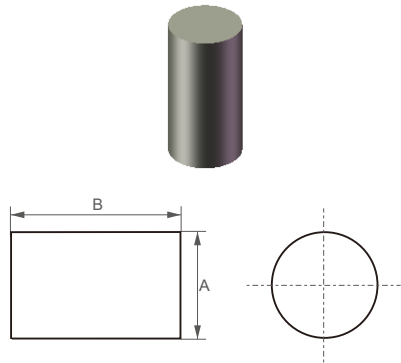
Fangda Cemented Carbide Technology Co., Ltd(FDCC), a wholly owned subsidiary of Fangda Holding Co., Ltd-leading company in the field of hardware in china was set up in 2001.It specializes in manufacturing, designing, R&D, producing and selling tungsten carbide products. Its tungsten carbide tips for wood-cutting tools, saw tips, tips for hollow saw, tips for hammer drill bit , tips for coal mining tools, buttons for DTH button bit, rods, strips, rotary bur heads, irregular & - complicated products, ect enjoy a good reputation in china. The products are sold to countries and areas in Europe and America, Middle East, Eastern-South Asia, Africa, etc and are warmly welcomed and trusted by the customers.

Aiming at customers' needs and provide perfect service for customers as its policy. FDCC offers the service to manufacture different kinds of tungsten carbide products according to the customers' requirements. Also, with its rich experience, the company also serves to design and manufacture specialized products for customers. FDCC warmly welcome customers domestically and abroad.

硬质合金牌号\性能\应用 Carbide Grade\Property\Application

国标牌号 GB Grade	ISO牌号 ISO Grade	硬度 HRA≥	密度 (g/cm <sup>3</sup> )≥	抗弯强度 (N/mm <sup>2</sup> )≥	应用Application
YG6X	K10	91.5	14.89	2870	适用于生产旋转锉,特别适用于加工有色金属及非金属材料。 Suitable for producing carbide burr, especially suitable for processing non-ferrous metals and non-metallic materials.
YG8	K20-K30	90.8	14.80	2850	适用于生产旋转锉刀。 Suitable for making carbide burr.
FD7	K30	90.8	14.80	2850	适用于生产经济型旋转锉刀。 Suitable for making economical carbide burr.
FK30	K20-K30	91.6	14.45	3500	适用于生产旋转锉,特别适用于加工有色金属及非金属材料。 Suitable for producing carbide burr, especially suitable for processing non-ferrous metals and non-metallic materials.

硬质合金旋转锉毛坯  
Tungsten Carbide Burr Blanks

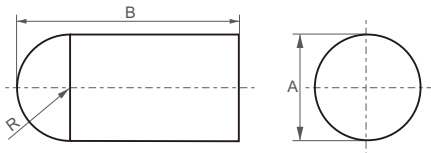


BSA TYPE

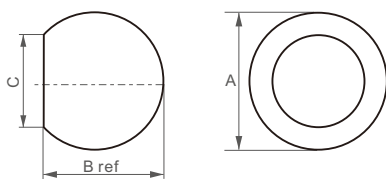
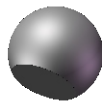
型号 Type	Dimension (mm)	
	A	B
BSA-51	6.35	4.77
BSA-51	6.35	12.70
BSA-2	7.94	19.05
BSA-3	9.53	19.05
BSA-4	11.11	25.40
BSA-5	12.70	25.40
BSA-6	15.88	25.40
BSA-16	19.05	12.70
BSA-72	19.05	19.05
BSA-7	19.05	25.40
BSA-8	22.23	25.40
BSA-9	25.40	25.40



BSC TYPE

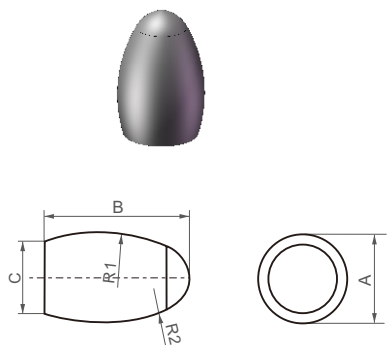


型号 Type	Dimension (mm)		
	A	B	R
BSC-51	6.35	12.70	0.13
BSC-2	7.94	19.05	0.16
BSC-3	9.53	19.05	0.19
BSC-4	11.11	25.40	0.23
BSC-5	12.70	25.40	0.26
BSC-6	15.88	25.40	0.32
BSC-15	19.05	12.70	0.38
BSC-16	19.05	19.05	0.38
BSC-7	19.05	25.40	0.38
BSC-9	25.40	25.40	0.51



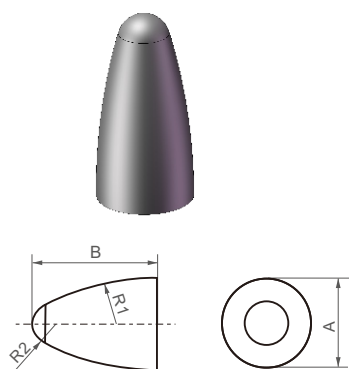
BSD TYPE

型号 Type	Dimension (mm)		
	A	B	C
BSD-51	6.35	0.22	0.19
BSD-2	7.94	0.27	0.23
BSD-3	9.53	0.33	0.26
BSD-4	11.11	0.39	0.29
BSD-5	12.70	0.45	0.33
BSD-6	15.88	0.57	0.39
BSD-7	19.05	0.69	0.46
BSD-9	25.40	0.92	0.58



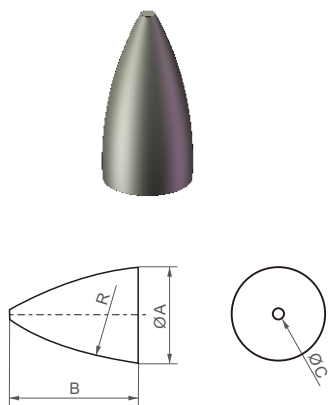
BSE TYPE

型号 Type	Dimension (mm)				
	A	B	C	R1	R2
BSE-51	6.35	9.53	0.22	0.43	0.10
BSE-3	9.53	15.88	0.31	0.88	0.16
BSE-5	12.70	22.23	0.41	1.26	0.21
BSE-6	15.88	25.40	0.51	1.26	0.26
BSE-7	19.05	25.40	0.49	0.80	0.32



BSF TYPE

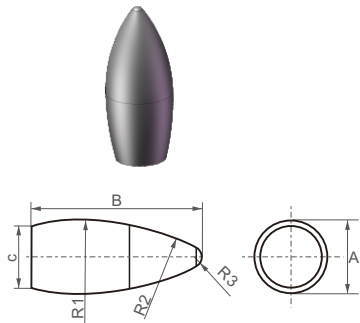
型号 Type	Dimension (mm)			
	A	B	R1	R2
BSF-51	6.35	12.70	1.63	0.07
BSF-3	9.53	19.05	2.30	0.10
BSF-4	11.11	25.40	3.26	0.10
BSF-13	12.70	19.05	1.76	0.13
BSF-5	12.70	25.40	3.26	0.13
BSF-6	15.88	25.40	3.01	0.19
BSF-7	19.05	25.40	2.13	0.19
BSF-14	19.05	31.75	3.32	0.19
BSF-15	19.05	38.10	5.07	0.19



BSG TYPE

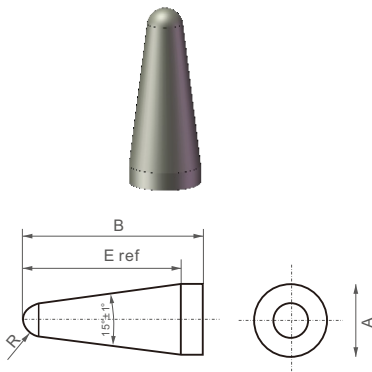
型号 Type	Dimension (mm)			
	A	B	C	R
BSG-51	6.35	12.70	0.04	1.01
BSG-2	7.94	19.05	0.06	2.01
BSG-3	9.53	19.05	0.06	1.51
BSG-13	12.70	19.05	0.07	1.32
BSG-5	12.70	25.40	0.07	2.26
BSG-6	15.88	25.40	0.07	1.88
BSG-7	19.05	25.40	0.08	1.63
BSG-15	19.05	38.10	0.09	3.51

硬质合金旋转锉毛坯  
Tungsten Carbide Burr Blanks



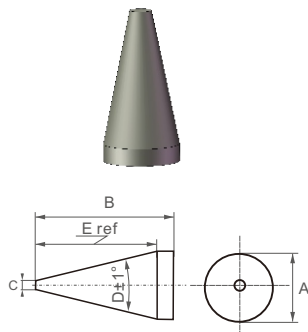
BSH TYPE

型号 Type	Dimension (mm)					
	A	B	C	R1	R2	R3
BSH-2	7.94	19.05	2.97	0.74	18.08	34.25
BSH-5	12.70	31.75	4.46	1.17	34.26	58.49
BSH-6	15.88	36.51	5.95	1.89	36.93	57.12
BSH-7	19.05	41.28	7.44	3.39	40.18	74.90



BSL TYPE

型号 Type	Dimension (mm)			
	A	B	R	E
BSL-2	7.94	25.40	0.06	22.23
BSL-3	9.53	30.16	0.07	1.59
BSL-4	12.70	31.75	0.13	3.18
BSL-5	15.88	33.38	0.19	4.76
BSL-6	15.88	36.51	0.17	7.94
BSL-7	19.05	41.28	0.22	12.70



BSM TYPE

型号 Type	Dimension (mm)				
	A	B	C	D	E
BSM-51	6.35	15.88	0.06	22.0	0.51
BSM-4	9.53	44.45	0.07	28.0	0.64
BSM-5	12.70	25.40	0.07	28.0	0.89
BSM-6	15.88	28.58	0.08	31.0	1.01