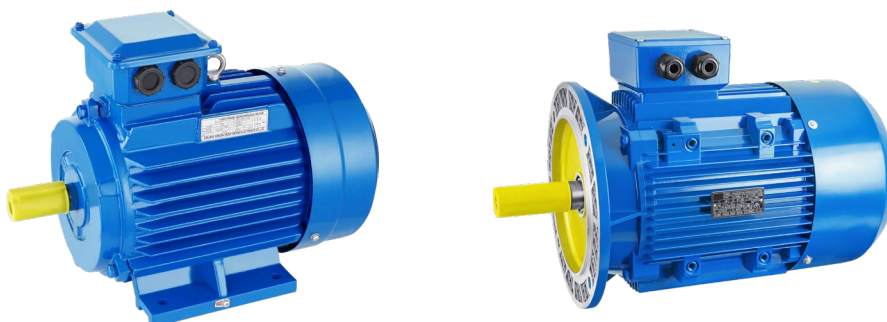


AIP series

2-pole asynchronous motor

Серия АИР асинхронный двигатель (2 полюса)



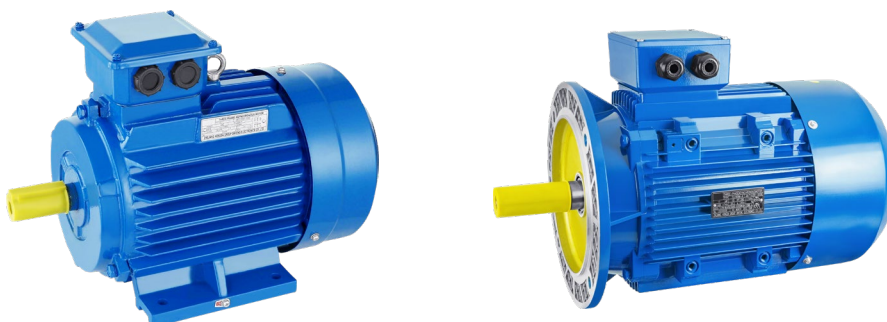
Product Specifications

Тип	Мощность (кВт)	Напряжение (V)	Частота вращения (об/мин)	Ток (А)	КПД (%)	Коэф. мощности	Ипуск/IN	Мпуск/MN	Mмакс/MN
AIP-50A2	0.09	220/380	2650	0.3	53.0	0.72	4.5	2	2
AIP-50B2	0.12	220/380	2650	0.39	53.6	0.72	5.0	2	2
AIP-56A2	0.18	220/380	2680	0.52	60.4	0.73	5.0	2	2
AIP-56B2	0.25	220/380	2680	0.72	64.8	0.73	5.0	2	2
AIP-63A2	0.37	220/380	2740	0.91	69.5	0.75	5.0	2.2	2.2
AIP-63B2	0.55	220/380	2740	1.31	74.1	0.75	5.0	2.2	2.2
AIP-71A2	0.75	220/380	2780	1.75	77.4	0.78	6.0	2.2	2.2
AIP-71B2	1.1	220/380	2780	2.55	79.6	0.80	6.0	2.2	2.2
AIP-80A2	1.5	220/380	2820	3.3	81.3	0.82	7.0	2.2	2.3
AIP-80B2	2.2	220/380	2820	4.6	83.2	0.84	7.0	2.2	2.3
AIP-90L2	3	220/380	2840	6.1	84.6	0.85	7.0	2.2	2.3
AIP-100S2	4	220/380	2870	7.9	85.8	0.84	7.5	2.2	2.3
AIP-100L2	5.5	220/380	2870	10.7	87.0	0.85	7.5	2.2	2.3
AIP-112M2	7.5	220/380	2890	14.7	88.1	0.85	7.5	2.2	2.3
AIP-132M2	11	380/660	2900	21.1	89.4	0.86	7.5	2.2	2.3
AIP-160S2	15	380/660	2930	30	90.3	0.86	7.5	2.2	2.3
AIP-160M2	18.5	380/660	2930	35	90.9	0.87	7.5	2.2	2.3
AIP-180S2	22	380/660	2940	41.5	91.3	0.87	7.0	2	2.3
AIP-180M2	30	380/660	2940	55.4	92.0	0.88	7.5	2	2.3
AIP-200M2	37	380/660	2950	71	92.5	0.88	7.0	2	2.3
AIP-200L2	45	380/660	2950	84	92.9	0.88	7.5	2	2.3
AIP-225M2	55	380/660	2970	99.3	93.2	0.88	7.5	2	2.3
AIP-250S2	75	380/660	2970	134.6	93.8	0.89	7.5	2	2.3
AIP-250M2	90	380/660	2970	160	94.1	0.89	7.5	2	2.3
AIP-280S2	110	380/660	2970	191	94.3	0.89	7.5	2	2.3
AIP-280M2	132	380/660	2970	228	94.6	0.89	7.5	2	2.3
AIP-315S2	160	380/660	2980	279	94.8	0.89	7.2	1.8	2.2
AIP-315M2	200	380/660	2980	339	95.0	0.90	7.2	1.8	2.2
AIP-355M2	250	380/660	2980	435.2	95.0	0.90	7.5	1.6	2.2
AIP-355L2	315	380/660	2980	544.8	95.0	0.90	7.5	1.6	2.2

AIP series

4-pole asynchronous motor

Серия АИР асинхронный двигатель (4 полюса)



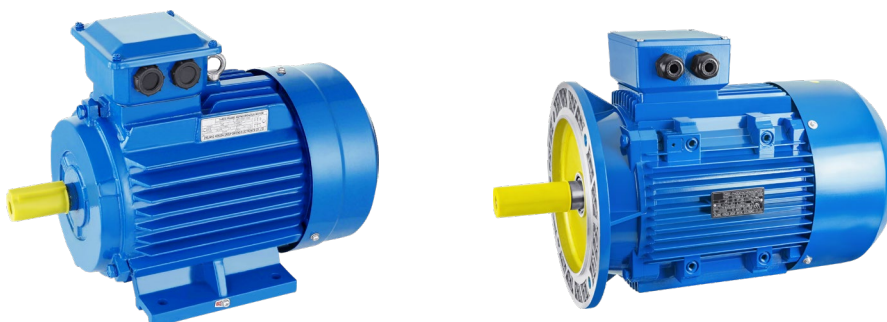
Product Specifications

Тип	Мощность (кВт)	Напряжение (V)	Частота вращения (об/мин)	Ток (А)	КПД (%)	Коэф. мощности	Ипуск/IN	Мпуск/MN	Ммакс/MN
AIP-50A4	0.06	220/380	1310	0.27	53.0	0.66	4.5	2	2
AIP-50B4	0.09	220/380	1310	0.37	55.0	0.66	4.5	2	2
AIP-56A4	0.12	220/380	1320	0.44	59.1	0.70	5.0	2	2
AIP-56B4	0.18	220/380	1320	0.65	64.7	0.70	5.0	2	2
AIP-63A4	0.25	220/380	1340	0.83	68.5	0.72	5.0	2.1	2.2
AIP-63B4	0.37	220/380	1340	1.18	72.7	0.72	5.0	2.1	2.2
AIP-71A4	0.55	220/380	1360	1.61	77.1	0.76	5.0	2.1	2.2
AIP-71B4	0.75	220/380	1360	1.9	79.6	0.76	5.0	2.1	2.2
AIP-80A4	1.1	220/380	1390	2.75	81.4	0.76	5.5	2.3	2.3
AIP-80B4	1.5	220/380	1390	3.52	82.8	0.78	5.5	2.3	2.3
AIP-90L4	2.2	220/380	1400	5	84.3	0.80	6.5	2.3	2.3
AIP-100S4	3	220/380	1430	6.7	85.5	0.80	7.0	2.3	2.3
AIP-100L4	4	220/380	1430	8.5	86.5	0.81	7.0	2.3	2.3
AIP-112M4	5.5	220/380	1440	11.3	87.7	0.82	7.0	2.3	2.3
AIP-132S4	7.5	380/660	1440	15.1	88.7	0.83	7.5	2.3	2.3
AIP-132M4	11	380/660	1440	22.2	89.8	0.83	7.5	2.3	2.3
AIP-160S4	15	380/660	1460	29	90.6	0.84	7.0	2.2	2.3
AIP-160M4	18.5	380/660	1460	35	91.2	0.84	7.0	2.2	2.3
AIP-180S4	22	380/660	1470	42.5	91.6	0.84	7.0	2.0	2.3
AIP-180M4	30	380/660	1470	57	92.3	0.85	7.0	2.0	2.3
AIP-200M4	37	380/660	1470	68.3	92.7	0.85	7.5	2.2	2.3
AIP-200L4	45	380/660	1470	83.1	93.1	0.85	7.5	2.2	2.3
AIP-225M4	55	380/660	1480	101	93.5	0.85	7.0	2.2	2.3
AIP-250S4	75	380/660	1480	137.8	94.0	0.86	7.5	2.2	2.3
AIP-250M4	90	380/660	1480	163	94.2	0.86	7.5	2.2	2.3
AIP-280S4	110	380/660	1480	196	94.5	0.86	6.5	2.2	2.3
AIP-280M4	132	380/660	1480	230	94.7	0.87	6.5	2.2	2.3
AIP-315S4	160	380/660	1490	286	94.9	0.88	5.5	2.1	2.2
AIP-315M4	200	380/660	1490	352	95.1	0.88	5.5	2.1	2.2
AIP-355M4	250	380/660	1490	437	95.1	0.88	7.0	2.1	2.2
AIP-355L4	315	380/660	1490	544	95.1	0.88	7.0	2.1	2.2

AIP series

6-pole asynchronous motor

Серия АИР асинхронный двигатель (6 полюса)



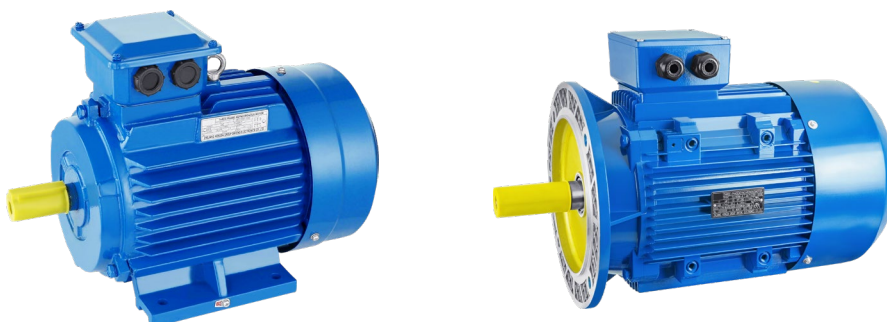
Product Specifications

Тип	Мощность (кВт)	Напряжение (V)	Частота вращения (об/мин)	Ток (А)	КПД (%)	Кэф. мощности	Пуск/IN	Мпуск/MN	Ммакс/MN
AIP-63A6	0.18	220/380	850	0.82	56	0.65	4.5	1.8	1.8
AIP-63B6	0.25	220/380	860	1.05	59	0.65	4.5	1.8	1.8
AIP-71A6	0.37	220/380	890	1.31	67	0.66	4.6	1.9	2
AIP-71B6	0.55	220/380	890	1.74	73.1	0.68	4.6	1.9	2
AIP-80A6	0.75	220/380	890	2.26	75.9	0.70	4.5	1.9	2
AIP-80B6	1.1	220/380	890	3.05	78.1	0.71	4.5	1.9	2
AIP-90L6	1.5	220/380	910	4.1	79.8	0.71	6	2	2.1
AIP-100L6	2.2	220/380	940	5.6	81.8	0.72	6	2	2.1
AIP-112MA6	3	220/380	940	7.4	83.3	0.73	6	2	2.1
AIP-112MB6	4	220/380	940	9.1	84.6	0.75	6	2	2.1
AIP-132S6	5.5	380/660	960	12.3	86.0	0.76	7	2.1	2.1
AIP-132M6	7.5	380/660	960	16.5	87.2	0.77	7	2.1	2.1
AIP-160S6	11	380/660	970	23	88.7	0.80	6.5	2	2.1
AIP-160M6	15	380/660	970	31	89.7	0.82	7	2	2.1
AIP-180M6	18.5	380/660	970	36.9	90.4	0.82	6.5	2	2.1
AIP-200M6	22	380/660	970	44	90.9	0.83	6.5	2	2.1
AIP-200L6	30	380/660	970	59.6	91.7	0.83	6.5	2.1	2.1
AIP-225M6	37	380/660	980	72.7	92.2	0.83	6.5	2.1	2.1
AIP-250S6	45	380/660	980	87	92.7	0.83	6.5	2	2.1
AIP-250M6	55	380/660	980	105	93.1	0.83	6.5	2	2.1
AIP-280S6	75	380/660	980	137	93.7	0.83	6.5	2.1	2
AIP-280M6	90	380/660	980	164	94	0.84	6.5	2.1	2
AIP-315S6	110	380/660	990	200	94.3	0.84	6.5	2	2
AIP-315M6	132	380/660	990	239	94.6	0.85	6.5	2	2
AIP-355S6	160	380/660	990	288	94.8	0.85	6.5	1.9	2
AIP-355M6	200	380/660	990	358	95.0	0.85	6.5	1.9	2
AIP-355L6	250	380/660	990	465	95.0	0.86	6.5	1.9	2

AIP series

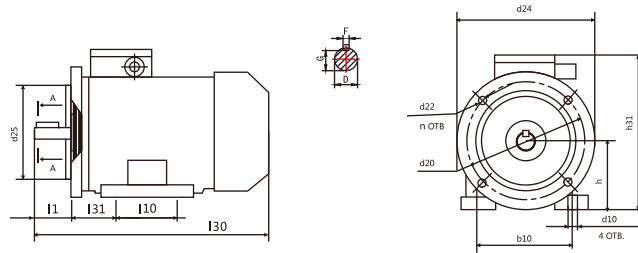
8-pole & 10-pole asynchronous motor

Серия АИР асинхронный двигатель (8 полюса 10 полюса)



Product Specifications

Тип	Мощность (кВт)	Напряжение (V)	Частота вращения (об/мин)	Ток (А)	КПД (%)	Кэф. мощности	Ипуск/IN	Мпуск/MN	Ммакс/MN
AIP-80A8	0.37	220/380	640	1.5	56.1	0.62	4	1.8	1.9
AIP-80B8	0.55	220/380	640	2.1	61.7	0.64	4	1.8	1.9
AIP-90LA8	0.75	220/380	660	2.1	66.2	0.68	4	1.8	1.9
AIP-90LB8	1.1	220/380	660	3	70.8	0.68	3.5	1.8	1.9
AIP-100L8	1.5	220/380	690	4	74.1	0.70	3.7	1.8	2
AIP-112MA8	2.2	220/380	690	6.16	77.6	0.70	6	1.8	2
AIP-112MB8	3	220/380	690	7.8	80	0.71	6	1.8	2
AIP-132S8	4	380/660	720	10.5	81.9	0.71	6	1.8	2
AIP-132M8	5.5	380/660	720	13.6	83.8	0.72	6	1.8	2
AIP-160S8	7.5	380/660	720	18	85.3	0.72	5.5	1.9	2
AIP-160M8	11	380/660	720	26	86.9	0.73	6.5	1.9	2
AIP-180M8	15	380/660	730	31.3	88.0	0.75	5.5	2	2
AIP-200M8	18.5	380/660	730	39	88.6	0.76	6	2	2
AIP-200L8	22	380/660	730	45.9	89.1	0.76	6	2	2
AIP-225M8	30	380/660	740	62.2	89.8	0.76	6	1.9	2
AIP-250S8	37	380/660	740	77.9	90.3	0.77	6	1.9	2
AIP-250M8	45	380/660	740	93.6	90.7	0.77	6	1.9	2
AIP-280S8	55	380/660	740	106	91.0	0.77	6	1.9	2
AIP-280M8	75	380/660	740	141	91.6	0.80	6	1.9	2
AIP-315S8	90	380/660	740	173	91.9	0.80	6	1.9	2
AIP-315M8	110	380/660	740	209	92.3	0.82	6	1.9	2
AIP-355S8	132	380/660	740	252	92.6	0.83	6	1.9	2
AIP-355M8	160	380/660	740	306	93.0	0.83	6	1.9	2
AIP-355L-8	200	380/660	740	382	93.5	0.83	6	1.9	2
AIP-355S1-10	45	380/660	590	95	91.0	0.73	6	1.9	2
AIP-355S2-10	55	380/660	590	115	92.0	0.73	6.5	1.5	2
AIP-315M10	75	380/660	590	155	92.0	0.76	6.5	1.5	2
AIP-315L10	90	380/660	590	191	92.5	0.76	6.5	1.5	2
AIP-355S10	90	380/660	590	178	93.0	0.76	6	1.3	2
AIP-355M10	110	380/660	590	217	93.0	0.76	6	1.3	2
AIP-355M2-10	132	380/660	590	268	93.0	0.78	6	1.3	2
AIP-355L10	160	380/660	590	320	93.0	0.80	6	1.3	2



Тип	Количество полюсов	L30	h31	L1	L10	L31	d1	d10	d20	d22	d25	b1	b2	b10	h
		L	HD	E1	B	C	D	K	M	S	N	F	FA	A	
АИР-50	2;4	200	140	20	63	32	9	5.8	100	7	80	3	3	80	50
АИР-56А	2;4	206	150	23	71	36	11	5.8	115	10	95	4	4	90	56
АИР-56В	2;4	231	150	23	71	36	11	5.8	115	10	95	4	4	90	56
АИР-63	2;4;6	250	160	30	80	40	14	7	130	10	110	5	5	100	63
АИР-71А	2;4;6;8	262	190	40	90	45	19	7	165	12	130	6	6	112	71
АИР-71В	2;4;6;8	278	190	40	90	45	19	7	165	12	130	6	6	112	71
АИР-80А	2;4;6;8	330	200	50	100	50	22	10	165	12	130	6	6	125	80
АИР-80В	2;4;6;8	350	200	50	100	50	22	10	165	12	130	6	6	125	80
АИР-90L	2;4;6;8	400	210	50	125	56	24	10	215	15	180	8	8	140	90
АИР-100S	2;4	410	260	60	112	63	28	12	215	15	180	8	8	160	100
АИР-100L	2;4;6;8	410	260	60	140	63	28	12	215	15	180	8	8	160	100
АИР-112M	2;4;6;8	460	300	80	140	70	32	12	265	15	230	10	10	190	112
АИР-132S	4;6;8	590	340	80	140	89	38	12	300	19	250	10	10	216	132
АИР-132M	2;4;6;8	530	340	80	178	89	38	12	300	19	250	10	10	216	132
АИР-160S	2	650	400	110	178	108	42	15	300	19	250	12	12	254	160
	4;6;8	650	400	110	178	108	48	15	300	19	250	14	12	254	160
АИР-160M	2	680	400	110	210	108	42	15	300	19	250	12	12	254	160
	4;6;8	680	400	110	210	108	48	15	300	19	250	14	12	254	160
АИР-180S	2	740	430	110	203	121	48	15	350	19	300	14	14	279	180
	4	740	430	110	203	121	55	15	350	19	300	16	14	279	180
АИР-180M	2	780	430	110	241	121	48	15	350	19	300	14	14	279	180
	4;6;8	780	430	110	241	121	55	15	350	19	300	16	14	279	180
АИР-200M	2	810	480	110	267	133	55	19	400	19	350	16	16	318	200
	4;6;8	840	480	140	267	133	60	19	400	19	350	18	16	318	200
АИР-200L	2	810	480	110	305	133	55	19	400	19	350	16	16	318	200
	4;6;8	840	480	140	305	133	60	19	400	19	350	18	16	318	200
АИР-225M	2	880	540	110	311	149	55	19	500	19	450	16	16	356	225
	4	910	540	140	311	149	65	19	500	19	450	18	18	356	225
	6;8	910	540	140	311	149	65	19	500	19	450	18	18	356	225
АИР-250S	2	980	590	140	311	168	65	24	500	19	450	18	18	406	250
	4;6;8	980	590	140	311	168	75	24	500	19	450	20	20	406	250
АИР-250M	2	980	590	140	349	168	65	24	500	19	450	18	18	406	250
	4;6;8	980	590	140	349	168	75	24	500	19	450	20	20	406	250
АИР-280S	2	1020	680	140	368	190	70	24	600	24	550	20	-	457	280
	4;6;8	1050	680	170	368	190	80	24	600	24	550	22	-	457	280
АИР-280M	2	1040	680	140	419	190	70	24	600	24	550	20	-	457	280
	4	1070	680	170	419	190	80	24	600	24	550	22	-	457	280
	6;8	1070	680	170	419	190	80	24	600	24	550	22	-	457	280
АИР-315S	2	1220	810	140	406	216	75	28	600	24	550	25	18	508	315
	4	1250	810	170	406	216	90	28	600	24	550	25	18	508	315
	6;8;10	1250	810	170	406	216	90	28	600	24	550	25	18	508	315
АИР-315M	2	1330	810	140	457	216	75	28	600	24	550	25	18	508	315
	4	1360	810	170	457	216	90	28	600	24	550	25	18	508	315
	6;8;10	1360	810	170	457	216	90	28	600	24	550	25	18	508	315
АИР-355S	2	1630	1100	170	500	254	85	28	740	24	680	22	-	610	355
	4;6;8	1630	1100	210	500	254	100	28	740	24	680	28	20	610	355
	10;12	1630	1100	210	500	254	100	28	740	24	680	28	20	610	355
АИР-355M	2	1630	1100	170	500	254	85	28	740	24	260	22	-	610	355
	4;6;8	1630	1100	210	560	254	100	28	740	24	680	28	20	610	355
	10;12	1630	1100	210	560	254	100	28	740	24	680	28	20	610	355