

YE3(Y2) series



Product Specifications

Model	Rated power		Rated voltage (V)	Rated current (A)	Frequency (Hz)	Speed (r/min)		Eff (η%)		Power Factor (CosΦ)	IS	TS	Tmax
	(kW)	(HP)				50Hz	60Hz	3	2		IN	TN	TN
2-pole three phase asynchronous motor technical data (Voltage:200V-250V,360V-440V,620V-790V)													
YE3(Y2)-6312	0.18	0.25	220/380	0.87/0.5	50/60	2720	3260	65.9	70.8	0.8	5.5	2.2	2.2
YE3(Y2)-6322	0.25	0.33	220/380	1.1/0.65	50/60	2720	3260	69.7	74.3	0.81	5.5	2.2	2.2
YE3(Y2)-7112	0.37	0.5	220/380	1.6/0.95	50/60	2740	3290	73.8	78.1	0.81	6.1	2.2	2.2
YE3(Y2)-7122	0.55	0.75	220/380	2.4/1.4	50/60	2740	3290	77.8	81.5	0.82	6.1	2.3	2.2
YE3(Y2)-80M1-2	0.75	1	220/380	3.1/1.8	50/60	2830	3400	80.7	83.5	0.84	6.8	2.3	2.3
YE3(Y2)-80M2-2	1.10	1.5	220/380	4.2/2.4	50/60	2830	3400	82.7	85.2	0.86	7.1	2.3	2.3
YE3(Y2)-90S-2	1.50	2	220/380	5.7/3.3	50/60	2840	3410	84.2	86.5	0.85	7.3	2.3	2.3
YE3(Y2)-90L-2	2.20	3	220/380	8.1/4.7	50/60	2840	3410	85.9	88.0	0.86	7.6	2.2	2.3
YE3(Y2)-100L-2	3.00	4	220/380	10.7/6.2	50/60	2870	3440	87.1	89.1	0.87	7.8	2.2	2.3
YE3(Y2)-112M-2	4.00	5.5	380/660	8.2/4.7	50/60	2890	3470	88.1	90.0	0.87	8.1	2.2	2.3
YE3(Y2)-132S1-2	5.50	7.5	380/660	10.9/6.3	50/60	2900	3480	89.2	90.9	0.88	8.2	2.2	2.3
YE3(Y2)-132S2-2	7.50	10	380/660	14.7/8.5	50/60	2900	3480	90.1	91.7	0.88	7.8	2.2	2.3
YE3(Y2)-160M1-2	11.00	15	380/660	21/12.1	50/60	2930	3520	91.2	92.6	0.89	7.9	2.2	2.3
YE3(Y2)-160M2-2	15.00	20	380/660	28.4/16.4	50/60	2930	3520	91.9	93.3	0.89	7.9	2.2	2.3
YE3(Y2)-160L-2	18.50	25	380/660	34.4/19.9	50/60	2930	3520	92.4	93.7	0.9	8.0	2.2	2.3
YE3(Y2)-180M-2	22.00	30	380/660	40.7/23.5	50/60	2940	3530	92.7	94.0	0.9	8.1	2.2	2.3
YE3(Y2)-200L1-2	30.00	40	380/660	55.1/31.8	50/60	2950	3540	93.3	94.5	0.9	7.5	2.0	2.3
YE3(Y2)-200L2-2	37.00	50	380/660	67.6/39.1	50/60	2950	3540	93.7	94.8	0.9	7.5	2.0	2.3
YE3(Y2)-225M-2	45.00	60	380/660	81.9/47.3	50/60	2970	3560	94	95.0	0.9	7.5	2.2	2.3
YE3(Y2)-250M-2	55.00	75	380/660	99.7/57.6	50/60	2970	3560	94.3	95.3	0.9	7.1	2.2	2.3
YE3(Y2)-280S-2	75.00	100	380/660	135.1/78.1	50/60	2970	3560	94.7	95.6	0.9	6.9	1.8	2.3
YE3(Y2)-280M-2	90.00	125	380/660	159.9/92.4	50/60	2970	3560	95.0	95.8	0.91	6.9	1.8	2.3
YE3(Y2)-315S-2	110.00	150	380/660	195/112.7	50/60	2980	3580	95.2	96.0	0.91	7.0	1.8	2.2
YE3(Y2)-315M-2	132.00	180	380/660	233.2/134.8	50/60	2980	3580	95.4	96.2	0.91	7.0	1.8	2.2
YE3(Y2)-315L1-2	160.00	220	380/660	279.1/161.3	50/60	2980	3580	95.6	96.3	0.92	7.1	1.8	2.2
YE3(Y2)-315L2-2	200.00	270	380/660	348.1/201.2	50/60	2980	3580	95.8	96.5	0.92	7.1	1.8	2.2
YE3(Y2)-355M-2	250.00	340	380/660	435.1/251.5	50/60	2980	3580	95.8	96.5	0.92	7.1	1.6	2.2
YE3(Y2)-355L-2	315.00	430	380/660	548.2/316.9	50/60	2980	3580	95.8	96.5	0.92	7.2	1.6	2.2

Product Specifications

Model	Rated power		Rated voltage (V)	Rated current (A)	Frequency (Hz)	Speed (r/min)		Eff (η%)		Power Factor (CosΦ)	IS	TS	Tmax
	(kW)	(HP)				50Hz	60Hz	3	2		IN	TN	TN
4-pole three phase asynchronous motor technical data (Voltage:200V-250V,360V-440V,620V-790V)													
YE3(Y2)-6314	0.12	0.16	220/380	0.73/0.42	50/60	1310	1570	64.8	69.8	0.72	4.4	2.1	2.2
YE3(Y2)-6324	0.18	0.25	220/380	1/0.59	50/60	1310	1570	69.9	74.7	0.73	4.4	2.1	2.2
YE3(Y2)-7114	0.25	0.33	220/380	1.3/0.77	50/60	1330	1600	73.5	77.9	0.74	5.2	2.1	2.2
YE3(Y2)-7124	0.37	0.5	220/380	1.9/1.1	50/60	1330	1600	77.3	81.1	0.75	5.2	2.1	2.2
YE3(Y2)-80M1-4	0.55	0.75	220/380	2.6/1.5	50/60	1390	1670	80.8	83.9	0.75	5.2	2.4	2.3
YE3(Y2)-80M2-4	0.75	1	220/380	3.3/1.9	50/60	1390	1670	82.5	85.7	0.76	6.4	2.3	2.3
YE3(Y2)-90S-4	1.10	1.5	220/380	4.7/2.7	50/60	1390	1670	84.1	87.2	0.77	6.6	2.3	2.3
YE3(Y2)-90L-4	1.50	2	220/380	6.1/3.5	50/60	1400	1680	85.3	88.2	0.79	6.7	2.3	2.3
YE3(Y2)-100L1-4	2.20	3	220/380	8.5/4.9	50/60	1430	1680	86.7	89.5	0.81	7.3	2.3	2.3
YE3(Y2)-100L2-4	3.00	4	220/380	11.2/6.5	50/60	1430	1720	87.7	90.4	0.82	7.5	2.3	2.3
YE3(Y2)-112M-4	4.00	5.5	380/660	8.6/5	50/60	1430	1720	88.6	91.1	0.82	7.5	2.3	2.3
YE3(Y2)-132S-4	5.50	7.5	380/660	11.5/6.6	50/60	1440	1730	89.6	91.9	0.83	7.5	2.0	2.3
YE3(Y2)-132M-4	7.50	10	380/660	15.3/8.8	50/60	1440	1730	90.4	92.6	0.84	7.3	2.0	2.3
YE3(Y2)-160M-4	11.00	15	380/660	22.2/12.8	50/60	1460	1750	91.4	93.3	0.84	7.4	2.0	2.3
YE3(Y2)-160L-4	15.00	20	380/660	29.6/17.1	50/60	1460	1750	92.1	93.9	0.85	7.5	2.0	2.3
YE3(Y2)-180M-4	18.50	25	380/660	35.9/20.8	50/60	1470	1760	92.6	94.2	0.86	7.6	2.0	2.3
YE3(Y2)-180L-4	22.00	30	380/660	42.5/24.6	50/60	1470	1760	93.0	94.5	0.86	7.7	2.1	2.3
YE3(Y2)-200L-4	30.00	40	380/660	57.5/33.2	50/60	1470	1760	93.6	94.9	0.86	7.1	2.1	2.3
YE3(Y2)-225S-4	37.00	50	380/660	69.8/40.3	50/60	1480	1780	93.9	95.2	0.87	7.3	2.1	2.3
YE3(Y2)-225M-4	45.00	60	380/660	84.5/48.8	50/60	1480	1780	94.2	95.4	0.87	7.3	2.2	2.3
YE3(Y2)-250M-4	55.00	75	380/660	102.8/59.4	50/60	1480	1780	94.6	95.7	0.87	7.3	2.2	2.3
YE3(Y2)-280S-4	75.00	100	380/660	139.5/80.6	50/60	1480	1780	95.0	96.0	0.87	6.8	2.2	2.3
YE3(Y2)-280M-4	90.00	125	380/660	167/96.5	50/60	1480	1780	95.2	96.1	0.87	6.9	2.2	2.3
YE3(Y2)-315S-4	110.00	150	380/660	201.2/116.3	50/60	1480	1780	95.4	96.3	0.88	6.9	2.1	2.2
YE3(Y2)-315M-4	132.00	180	380/660	240.9/139.2	50/60	1490	1790	95.6	96.4	0.88	6.9	2.1	2.2
YE3(Y2)-315L1-4	160.00	220	380/660	288.2/166.6	50/60	1490	1790	95.8	96.6	0.89	6.9	2.1	2.2
YE3(Y2)-315L2-4	200.00	270	380/660	359.4/207.7	50/60	1490	1790	96.0	96.7	0.89	6.9	2.1	2.2
YE3(Y2)-355M-4	250.00	340	380/660	444.3/256.8	50/60	1490	1790	96.0	96.7	0.9	6.9	2.0	2.2
YE3(Y2)-355L-4	315.00	430	380/660	559.8/323.6	50/60	1490	1790	96.0	96.7	0.9	6.9	2.0	2.2

Product Specifications

Model	Rated power		Rated voltage (V)	Rated current (A)	Frequency (Hz)	Speed (r/min)		Eff (η%)		Power Factor (CosΦ)	IS	TS	Tmax
	(kW)	(HP)				50Hz	60Hz	3	2		IN	TN	TN
6-pole three phase asynchronous motor technical data (Voltage:200V-250V,360V-440V,620V-790V)													
YE3(Y2)-631-6	0.09	0.12	220/380	0.67/0.39	50/60	850	1020	54	/	0.65	4.5	1.8	1.8
YE3(Y2)-632-6	0.12	0.16	220/380	0.87/0.50	50/60	850	1020	58	/	0.65	4.5	1.8	1.8
YE3(Y2)-711-6	0.18	0.25	220/380	1.12/0.65	50/60	880	1050	64	/	0.66	4.6	1.9	2.0
YE3(Y2)-712-6	0.25	0.33	220/380	1.51/0.87	50/60	880	1050	66	/	0.66	4.6	1.9	2.0
YE3(Y2)-8016	0.37	0.5	220/380	2.1/1.2	50/60	890	1070	73.5	78.0	0.7	4.7	1.9	2.0
YE3(Y2)-8026	0.55	0.75	220/380	2.8/1.6	50/60	890	1070	77.2	80.9	0.72	4.7	1.9	2.0
YE3(Y2)-90S-6	0.75	1	220/380	3.6/2.1	50/60	910	1090	78.9	82.7	0.72	5.8	2.0	2.1
YE3(Y2)-90L-6	1.10	1.5	220/380	5/2.9	50/60	910	1090	81.0	84.5	0.73	5.9	2.0	2.1
YE3(Y2)-100L-6	1.50	2	220/380	6.7/3.9	50/60	940	1130	82.5	85.9	0.75	5.9	2.0	2.1
YE3(Y2)-112M-6	2.20	3	220/380	9.3/5.4	50/60	940	1130	84.3	87.4	0.76	6.2	2.0	2.1
YE3(Y2)-132S-6	3.00	4	220/380	12.5/7.2	50/60	960	1150	85.6	88.6	0.76	6.4	2.0	2.1
YE3(Y2)-132M1-6	4.00	5.5	380/660	9.5/5.5	50/60	960	1150	86.8	89.5	0.76	6.6	2.0	2.1
YE3(Y2)-132M2-6	5.50	7.5	380/660	12.6/7.3	50/60	960	1150	88.0	90.5	0.77	6.8	2.0	2.1
YE3(Y2)-160M-6	7.50	10	380/660	17/9.8	50/60	970	1160	89.1	91.3	0.77	6.8	2.0	2.1
YE3(Y2)-160L-6	11.00	15	380/660	24.2/14	50/60	970	1160	90.3	92.3	0.78	6.9	2.0	2.1
YE3(Y2)-180L-6	15.00	20	380/660	31.6/18.3	50/60	970	1160	91.2	92.9	0.81	7.3	2.0	2.1
YE3(Y2)-200L1-6	18.50	25	380/660	38.4/22.2	50/60	970	1160	91.7	93.4	0.81	7.2	2.0	2.1
YE3(Y2)-200L2-6	22.00	30	380/660	44.4/25.7	50/60	970	1160	92.2	93.7	0.83	7.3	2.0	2.1
YE3(Y2)-225M-6	30.00	40	380/660	59.2/34.2	50/60	980	1180	92.9	94.2	0.84	6.8	2.0	2.1
YE3(Y2)-250M-6	37.00	50	380/660	71/41	50/60	980	1180	93.3	94.5	0.86	7.0	2.0	2.1
YE3(Y2)-280S-6	45.00	60	380/660	85.9/49.7	50/60	980	1180	93.7	94.8	0.86	7.2	2.0	2.0
YE3(Y2)-280M-6	55.00	75	380/660	104.5/60.4	50/60	980	1180	94.1	95.1	0.86	7.2	2.0	2.0
YE3(Y2)-315S-6	75.00	100	380/660	141.6/81.8	50/60	990	1190	94.6	95.4	0.86	6.5	2.0	2.0
YE3(Y2)-315M-6	90.00	125	380/660	169.4/97.9	50/60	990	1190	94.9	95.6	0.86	6.6	2.0	2.0
YE3(Y2)-315L1-6	110.00	150	380/660	206.3/119.2	50/60	990	1190	95.1	95.8	0.86	6.6	2.0	2.0
YE3(Y2)-315L2-6	132.00	180	380/660	244/141	50/60	990	1190	95.4	96.0	0.87	6.6	2.0	2.0
YE3(Y2)-355M1-6	160.00	220	380/660	295.1/170.6	50/60	990	1190	95.6	96.2	0.87	6.7	2.0	2.0
YE3(Y2)-355M2-6	200.00	270	380/660	363.9/210.3	50/60	990	1190	95.8	96.3	0.88	6.8	2.0	2.0
YE3(Y2)-355L-6	250.00	340	380/660	454.9/262.9	50/60	990	1190	95.8	96.5	0.88	6.8	2.0	2.0

Product Specifications

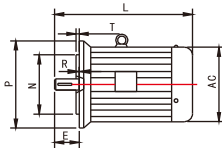
Model	Rated power		Rated voltage (V)	Rated current (A)	Frequency (Hz)	Speed (r/min)		Eff (η%)	Power Factor (CosΦ)	IS	TS	Tmax
	(kW)	(HP)				50Hz	60Hz			IN	TN	TN
8-pole & 10-pole three phase asynchronous motor technical data (Voltage:200V-250V,360V-440V,620V-790V)												
YE3(Y2)-801-8	0.18	0.25	220/380	1.5/0.88	50/60	630	760	58.7	0.61	3.3	1.8	1.9
YE3(Y2)-802-8	0.25	0.34	220/380	2.1/1.2	50/60	640	770	64.1	0.61	3.3	1.8	1.9
YE3(Y2)-90S-8	0.37	0.5	220/380	2.6/1.5	50/60	660	790	69.3	0.61	4.0	1.8	1.9
YE3(Y2)-90L-8	0.55	0.75	220/380	3.8/2.2	50/60	660	790	70.1	0.61	4.0	1.8	2.0
YE3(Y2)-100L1-8	0.75	1	220/380	4.2/2.4	50/60	690	830	73.0	0.67	4.0	1.8	2.0
YE3(Y2)-100L2-8	1.10	1.5	220/380	5.7/3.3	50/60	690	830	75.0	0.69	5.0	1.8	2.0
YE3(Y2)-112M-8	1.50	2.2	220/380	7.6/4.4	50/60	680	820	77.7	0.69	5.0	1.8	2.0
YE3(Y2)-132S-8	2.20	3	220/380	10.4/6	50/60	720	860	79.7	0.71	6.0	1.8	2.0
YE3(Y2)-132M-8	3.00	4	220/380	13.7/7.9	50/60	720	860	81.9	0.73	6.0	1.8	2.0
YE3(Y2)-160M1-8	4.00	5.5	380/660	10.3/6	50/60	720	860	83.5	0.73	6.0	1.9	2.0
YE3(Y2)-160M2-8	5.50	7.5	380/660	13.6/7.9	50/60	720	860	84.8	0.74	6.0	2.0	2.0
YE3(Y2)-160L-8	7.50	10	380/660	17.8/10.3	50/60	720	860	86.2	0.75	6.0	2.0	2.0
YE3(Y2)-180L-8	11.00	15	380/660	25.2/14.6	50/60	730	880	87.3	0.76	6.6	2.0	2.0
YE3(Y2)-200L-8	15.00	20	380/660	34.1/19.7	50/60	730	880	88.6	0.76	6.6	2.0	2.0
YE3(Y2)-225S-8	18.50	25	380/660	41.1/23.8	50/60	730	880	89.6	0.76	6.6	1.9	2.0
YE3(Y2)-225M-8	22.00	30	380/660	47.4/27.4	50/60	740	890	90.1	0.78	6.6	1.9	2.0
YE3(Y2)-250M-8	30.00	40	380/660	63.5/36.7	50/60	740	890	90.6	0.79	6.6	1.9	2.0
YE3(Y2)-280S-8	37.00	50	380/660	77.9/45	50/60	740	890	91.3	0.79	6.6	1.9	2.0
YE3(Y2)-280M-8	45.00	60	380/660	94.2/54.5	50/60	740	890	91.8	0.79	6.6	1.9	2.0
YE3(Y2)-315S-8	55.00	75	380/660	111.3/64.3	50/60	740	890	92.2	0.81	6.6	1.8	2.0
YE3(Y2)-315M-8	75.00	100	380/660	151.4/87.5	50/60	740	890	92.5	0.81	6.6	1.8	2.0
YE3(Y2)-315L1-8	90.00	125	380/660	178/102.9	50/60	740	890	93.1	0.82	6.6	1.8	2.0
YE3(Y2)-315L2-8	110.00	150	380/660	217.1/125.5	50/60	740	890	93.4	0.82	6.4	1.8	2.0
YE3(Y2)-355M1-8	132.00	180	380/660	261.3/151	50/60	740	890	93.7	0.82	6.4	1.8	2.0
YE3(Y2)-355M2-8	160.00	220	380/660	315.1/182.1	50/60	740	890	94.0	0.82	6.4	1.8	2.0
YE3(Y2)-355L-8	200.00	270	380/660	387.9/224.2	50/60	740	890	94.3	0.83	6.4	1.8	2.0
YE3(Y2)-315S-10	45.00	60	380/660	99.7/57.6	50/60	590	710	91.5	0.75	6.2	1.5	2.0
YE3(Y2)-315M-10	55.00	75	380/660	121.3/70.1	50/60	590	710	92.0	0.75	6.2	1.5	2.0
YE3(Y2)-315L1-10	75.00	100	380/660	162.3/93.8	50/60	590	710	92.5	0.76	6.2	1.5	2.0
YE3(Y2)-315L2-10	90.00	120	380/660	191.2/110.5	50/60	590	710	93.0	0.77	6.2	1.5	2.0
YE3(Y2)-355M1-10	110.00	150	380/660	230.2/133.1	50/60	590	710	93.2	0.78	6.0	1.3	2.0
YE3(Y2)-355M2-10	132.00	180	380/660	275.3/159.1	50/60	590	710	93.5	0.78	6.0	1.3	2.0
YE3(Y2)-355L-10	160.00	220	380/660	333.7/192.9	50/60	590	710	93.5	0.78	6.0	1.3	2.0

YD series

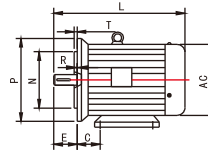
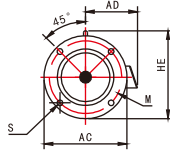
three-phase pole-changing two-speed asynchronous motor technical data

Model	Rated power		Rated voltage (V)	Rated current (A)	Frequency (Hz)	Speed (r/min)		Eff (η%)	Power Factor (CosΦ)	IS	TS	Tmax
	(kW)	(HP)				IN	TN			TN		
YD80M1-4/2	0.45/0.55	0.6/0.75	380	1.4/1.5	50/60	1420/2820	1700/3380	65/66	0.74/0.85	6.5/7.0	1.5/1.7	1.8
YD80M2-4/2	0.55/0.75	0.75/1	380	1.7/2.0	50/60	1420/2820	1700/3380	66/68	0.74/0.85	6.5/7.0	1.6/1.8	1.8
YD90S-4/2	0.85/1.1	1.2/1.5	380	2.3/2.8	50/60	1420/2820	1700/3380	72/74	0.77/0.85	6.5/7.0	1.8/1.9	1.8
YD90L-4/2	1.3/1.8	1.8/2.5	380	3.3/4.3	50/60	1420/2820	1700/3380	73/74	0.78/0.85	6.5/7.0	1.8/2.0	1.8
YD100L1-4/2	2.0/2.4	3.2/3.3	380	4.8/5.6	50/60	1440/2840	1730/3410	76/78	0.81/0.86	6.5/7.0	1.7/1.9	1.8
YD100L2-4/2	2.4/3.0	3.3/4	380	5.6/6.7	50/60	1440/2840	1730/3410	77/79	0.83/0.89	6.5/7.0	1.6/1.7	1.8
YD112M-4/2	3.3/4.0	4.5/5.5	380	7.4/8.6	50/60	1440/2840	1730/3410	79/82	0.83/0.89	6.5/7.0	1.9/2.0	1.8
YD132S-4/2	4.5/5.5	6/7.5	380	9.8/11.9	50/60	1450/2890	1740/3470	79/83	0.84/0.89	6.5/7.0	1.7/1.8	1.8
YD132M-4/2	6.5/8.0	8.8/11	380	13.8/17.1	50/60	1450/2890	1740/3470	80/84	0.85/0.89	6.5/7.0	1.7/1.8	1.8
YD160M-4/2	9.0/11.0	12/15	380	18.5/22.9	50/60	1460/2920	1750/3500	82/87	0.85/0.89	6.5/7.0	1.6/1.8	1.8
YD160L-4/2	11.0/14.0	15/19	380	22.3/28.8	50/60	1460/2920	1750/3500	82/87	0.86/0.90	6.5/7.0	1.7/1.9	1.8
YD180M-4/2	15.0/18.5	20/25	380	29.4/36.7	50/60	1470/2940	1760/3530	85/89	0.87/0.90	6.5/7.0	1.8/1.9	1.8
YD180L-4/2	18.5/22	25/30	380	35.9/42.7	50/60	1470/2940	1760/3530	86/89	0.88/0.91	6.5/7.0	1.6/1.8	1.8
YD90S-6/4	0.65/0.85	0.9/1.2	380	2.2/2.3	50/60	920/1420	1100/1700	64/70	0.68/0.79	6.0/6.5	1.6/1.4	1.8
YD90L-6/4	0.85/1.1	1.2/1.5	380	2.8/3.0	50/60	920/1420	1100/1700	66/71	0.70/0.79	6.0/6.5	1.6/1.5	1.8
YD100L1-6/4	1.3/1.8	1.8/2.5	380	3.8/4.4	50/60	940/1440	1130/1730	74/77	0.70/0.80	6.0/6.5	1.7/1.4	1.8
YD100L2-6/4	1.5/2.2	2/3	380	4.3/5.4	50/60	940/1440	1130/1730	75/77	0.70/0.80	6.0/6.5	1.6/1.4	1.8
YD112M-6/4	2.2/2.8	3/3.8	380	5.7/6.7	50/60	940/1440	1130/1730	77/78	0.75/0.82	6.0/6.5	1.8/1.5	1.8
YD132S-6/4	3.0/4.0	4/5.5	380	7.7/9.5	50/60	960/1440	1150/1730	78/79	0.75/0.82	6.0/6.5	1.8/1.7	1.8
YD132M-6/4	4.0/5.5	5.5/7.5	380	9.8/12.3	50/60	960/1440	1150/1730	80/82	0.76/0.85	6.0/6.5	1.6/1.4	1.8
YD160M-6/4	6.5/8.0	8.8/11	380	15.1/17.4	50/60	970/1460	1160/1750	83/84	0.78/0.84	6.0/6.5	1.5/1.5	1.8
YD160L-6/4	9.0/11.0	12/15	380	20.6/23.4	50/60	970/1460	1160/1750	84/85	0.78/0.85	6.0/6.5	1.6/1.7	1.8
YD180M-6/4	11.0/14.0	15/19	380	25.9/29.8	50/60	970/1460	1160/1750	84/85	0.76/0.85	6.0/6.5	1.6/1.7	1.8
YD180L-6/4	13.6/16.0	18/22	380	29.4/33.6	50/60	970/1460	1160/1750	85/86	0.78/0.85	6.0/6.5	1.7/1.7	1.8
YD90L-8/4	0.45/0.75	0.6/1	380	1.9/1.8	50/60	660/1420	790/1700	58/72	0.63/0.87	5.5/6.5	1.6/1.4	1.8
YD100L-8/4	0.85/1.5	1.2/2	380	3.1/3.5	50/60	690/1420	830/1700	67/74	0.63/0.88	5.5/6.5	1.6/1.4	1.8
YD112M-8/4	1.5/2.4	2/3.3	380	5.0/5.3	50/60	690/1420	830/1700	72/73	0.63/0.88	5.5/6.5	1.7/1.7	1.8
YD132S-8/4	2.2/3.3	3/4.5	380	7.0/7.1	50/60	720/1440	860/1730	75/80	0.64/0.88	5.5/6.5	1.5/1.7	1.8
YD132M-8/4	3.0/4.5	4/6	380	9.0/9.4	50/60	720/1440	860/1730	78/82	0.65/0.89	5.5/6.5	1.5/1.6	1.8
YD160M-8/4	5.0/7.5	6.8/10	380	13.9/15.2	50/60	720/1440	860/1730	83/84	0.66/0.89	5.5/6.5	1.5/1.6	1.8
YD160L-8/4	7.0/11.0	9.5/15	380	19/21.8	50/60	720/1440	860/1730	85/86	0.66/0.89	5.5/6.5	1.5/1.6	1.8
YD180M-8/4	11.0/17.0	15/23	380	26.7/32.6	50/60	730/1460	880/1750	87/88	0.72/0.91	6.0/7.0	1.5/1.5	1.8
YD90S-8/6	0.35/0.45	0.5/0.6	380	1.6/1.4	50/60	660/920	790/1100	56/70	0.60/0.72	5.0/6.0	1.8/2.0	1.8
YD90L-8/6	0.45/0.65	0.6/0.9	380	1.9/1.9	50/60	660/920	790/1100	59/71	0.60/0.73	5.0/6.0	1.7/1.8	1.8
YD100L-8/6	0.75/1.1	1/1.5	380	2.9/3.1	50/60	690/920	790/1100	65/75	0.60/0.73	5.0/6.0	1.8/1.9	1.8
YD112M-8/6	1.3/1.8	1.8/2.4	380	4.5/4.8	50/60	690/920	790/1100	72/78	0.60/0.73	5.0/6.0	1.7/1.9	1.8
YD132S-8/6	1.8/2.4	2.4/3.3	380	5.8/6.2	50/60	720/960	860/1150	76/80	0.61/0.73	5.0/6.0	1.6/1.9	1.8
YD132M-8/6	2.6/3.7	3.5/5	380	8.2/9.4	50/60	720/960	860/1150	78/82	0.62/0.73	5.0/6.0	1.9/1.9	1.8
YD160M-8/6	4.5/6.0	6/8.2	380	13.3/14.7	50/60	720/970	860/1160	83/85	0.62/0.73	5.0/6.0	1.6/1.9	1.8
YD160L-8/6	6.0/8.0	8.2/11	380	17.5/19.4	50/60	720/970	860/1160	84/86	0.62/0.73	5.0/6.0	1.6/1.9	1.8
YD180M-8/6	7.5/10.0	10/14.0	380	21.9/24.2	50/60	730/970	880/1160	84/86	0.62/0.73	5.0/6.0	1.9/1.9	1.8
YD180L-8/6	9.0/12.0	12/16.0	380	24.7/28.3	50/60	730/970	880/1160	85/86	0.65/0.75	5.0/6.0	1.8/1.8	1.8

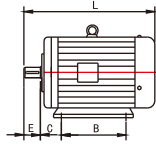
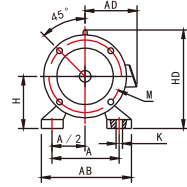
Installation Dimensions of YE3(Y2)、YD series three phase asynchronous motor



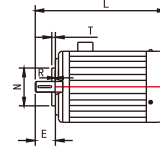
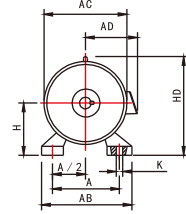
B5



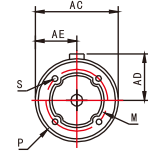
B35



B3



B14



Frame size	B3 Installation size (mm)									B14 Installation size (mm)						B5 Installation size (mm)						Overall Dimension (mm)						
	H	A	B	C	D	E	F	G	K	M	N	P	R	S	T	M	N	P	R	S	T	AB	AD	AC	HD	L	HE	
YE3(Y2) 63	63	100	80	40	11	23	4	8.5	7	75	60	90	0	M5	3	115	95	140	0	10	3	135	70	130	180	225	130	
YE3(Y2)2 71	71	112	90	45	14	30	5	11	7	85	70	105	0	M6	3.5	130	110	160	0	10	3.5	150	80	145	195	250	145	
YE3(Y2)2 80	80	125	100	50	19	40	6	15.5	10	100	80	120	0	M6	3.5	165	130	200	0	12	3.5	165	150	175	175	290	185	
YE3(Y2) 90S	90	140	100	56	24	50	8	20	10	115	95	140	0	M8	3.5	165	130	200	0	12	4	180	160	195	195	315	195	
YE3(Y2) 90L			125																							340		
YE3(Y2) 100L	100	160	140	63	28	60	8	24	12	130	110	155	0	M8	4	215	180	250	0	15	4	205	180	215	245	380	245	
YE3(Y2) 112M	112	190	140	70	28	60	8	24	12	130	110	160	0	M8	4	215	180	250	0	15	4	245	190	245	265	400	265	
YE3(Y2) 132S	132	216	140	89	38	80	10	33	12	165	130	200	0	M10	4	265	230	300	0	19	5	280	210	275	315	475	315	
YE3(Y2) 132M			178																							515		
YE3(Y2) 160M	160	254	210	108	42	110	12	37	15	-	-	-	-	-	-	300	250	350	0	19	5	330	265	335	385	605	385	
YE3(Y2) 160L			254																							650		
YE3(Y2) 180M	180	279	241	121	48	110	14	42.5	15	-	-	-	-	-	-	300	250	350	0	19	5	355	285	380	430	670	430	
YE3(Y2) 180L			279																							710		
YE3(Y2) 200L	200	318	305	133	55	110	16	49	19	-	-	-	-	-	-	350	300	400	0	19	5	395	315	420	475	775	480	
YE3(Y2) 225S	4;6;8	225	286	149	60	140	18	53	19	-	-	-	-	-	-	400	350	450	0	19	5	435	345	475	530	820	535	
YE3(Y2) 225M			311																							815		
YE3(Y2) 225M	4;6;8	356	311	149	60	140	18	53	19	-	-	-	-	-	-	400	350	450	0	19	5	435	345	475	530	845		
YE3(Y2) 250M	2				60			53		-	-	-	-	-	-													
YE3(Y2) 250M	4;6;8	250	406	349	168	65	140	18	58	24	-	-	-	-	-	500	450	550	0	19	5	490	285	515	575	930	650	
YE3(Y2) 280S																												2
YE3(Y2) 280S	4;6;8	280	457	368	190	75	140	20	67.5	24	-	-	-	-	-	500	450	550	0	19	5	550	410	585	640	1000	720	
YE3(Y2) 280M																												2
YE3(Y2) 280M	4;6;8	280	457	419	190	75	140	20	67.5	24	-	-	-	-	-	500	450	550	0	19	5	550	410	585	640	1050	720	
YE3(Y2) 280M																												2

Model	B3 Installation size (mm)									B5 Installation size (mm)						Overall Dimension (mm)						
	H	A	B	C	D	E	F	G	K	M	N	P	R	S	T	AB	AD	AC	HD	L	HE	
YE3(Y2) 315S	2	315	508	406	216	65	140	18	58	28	600	550	660	0	19	6	628	576	645	865	1240	845
YE3(Y2) 315S	4/6/8/10	315	508	406	216	80	170	22	71	28	600	550	660	0	19	6	628	576	645	865	1270	845
YE3(Y2) 315M	2	315	508	457	216	65	140	18	58	28	600	550	660	0	19	6	628	576	645	865	1310	845
YE3(Y2) 315M	4/6/8/10	315	508	457	216	80	170	22	71	28	600	550	660	0	19	6	628	576	645	865	1340	845
YE3(Y2) 315L	2	315	508	508	216	65	140	18	58	28	600	550	660	0	19	6	628	576	645	865	1310	845
YE3(Y2) 315L	4/6/8/10	315	508	508	216	80	170	22	71	28	600	550	660	0	19	6	628	576	645	865	1340	845
YE3(Y2) 355M	2	355	610	560	254	75	140	20	67.5	28	740	680	800	0	24	6	740	680	750	1035	1540	1010
YE3(Y2) 355M	4/6/8/10	355	610	560	254	95	170	25	86	28	740	680	800	0	24	6	740	680	750	1035	1570	1010
YE3(Y2) 355L	2	355	610	630	254	75	140	20	67.5	28	740	680	800	0	24	6	740	680	750	1035	1540	1010
YE3(Y2) 355L	4/6/8/10	355	610	630	254	95	170	25	86	28	740	680	800	0	24	6	740	680	750	1035	1570	1010