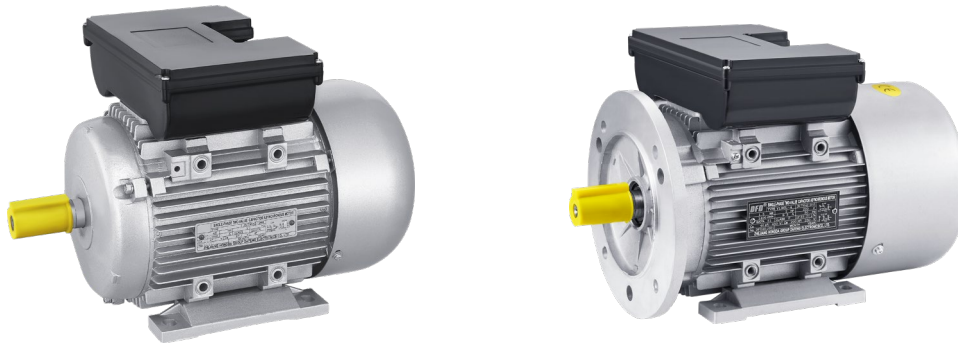


YL series

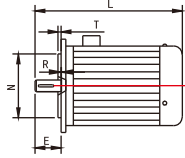
Single-phase two-value capacitor asynchronous motor technical data



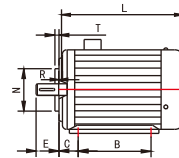
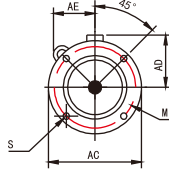
Product Specifications

Model	Rated power		Rated voltage (V)	Rated current (A)	Frequency (Hz)	Speed (r/min)		Eff (η%)	Power Factor (CosΦ)	IS	TS	Tmax
	(kW)	(HP)				IN	TN			TN		
YL7112	0.37	0.5	110/220	5.4/2.7	50/60	2750	3400	67	0.94	5	1.8	1.8
YL7122	0.55	0.75	110/220	7.6/3.8	50/60	2750	3400	70	0.94	5	1.8	1.8
YL7114	0.25	0.33	110/220	4.2/2.1	50/60	1370	1650	62	0.94	6	1.8	1.8
YL7124	0.37	0.5	110/220	5.8/2.9	50/60	1370	1650	66	0.94	6	1.8	1.8
YL8012	0.75	1	110/220	10.4/5.2	50/60	2780	3410	72.1	0.94	6	1.8	1.8
YL8022	1.1	1.5	110/220	14/7	50/60	2780	3410	75	0.95	6	1.8	1.8
YL8014	0.55	0.75	110/220	8/4	50/60	1380	1680	70	0.94	6	1.8	1.8
YL8024	0.75	1	110/220	10.4/5.2	50/60	1380	1680	72.1	0.94	6	1.8	1.8
YL90S-2	1.5	2	110/220	19/9.5	50/60	2800	3410	77.2	0.95	5	1.7	1.8
YL90L-2	2.2	3	110/220	27.4/13.7	50/60	2800	3410	79.7	0.95	6	1.7	1.8
YL90S-4	1.1	1.5	110/220	14.4/7.2	50/60	1400	1700	75.0	0.95	5.5	1.7	1.8
YL90L-4	1.5	2	110/220	19.2/9.6	50/60	1400	1700	77.2	0.95	6	1.7	1.8
YL90S-6	0.55	0.75	110/220	9/4.5	50/60	910	1090	62	0.94	5.5	1.7	1.7
YL90L-6	0.75	1	110/220	11.9/6	50/60	910	1090	65	0.94	5.5	1.7	1.7
YL90L2-6	1.1	1.5	110/220	16.6/8.3	50/60	910	1090	68	0.94	5.5	1.7	1.7
YLY100L-2	3	4	110/220	36.4/18.2	50/60	2840	3420	81.5	0.95	6.5	1.6	1.7
YLY100L1-4	2.2	3	110/220	27.8/13.9	50/60	1420	1720	79.7	0.95	6.5	1.6	1.7
YLY100L2-4	3	4	110/220	37.4/18.7	50/60	1420	1720	81.5	0.95	6.5	1.6	1.7
YLY112M4	4	5.5	110/220	49.2/24.6	50/60	1420	1730	82.6	0.95	6.5	1.5	1.7
YLY112M2	4	5.5	110/220	48.6/24.3	50/60	2840	3420	82.6	0.95	6.5	1.5	1.7
YLY132S2	5.5	7.5	110/220	66.6/33.3	50/60	2840	3420	83.0	0.95	6.5	1.5	1.7
YLY132M2	7.5	10	110/220	89.8/44.9	50/60	2840	3420	83.5	0.95	6.5	1.5	1.7
YLY132S4	5.5	7.5	110/220	67.6/33.8	50/60	1440	1730	82.8	0.95	6.5	1.5	1.7
YLY132M4	7.5	10	110/220	90.8/45.4	50/60	1440	1730	83.2	0.95	6.5	1.5	1.7

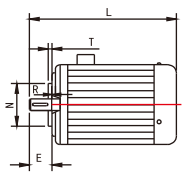
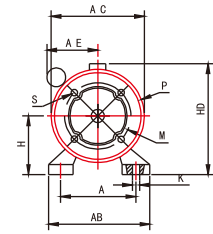
Installation Dimensions of YC.YY.YL series single & three separate horsepower and YLD series single-phase pole-changing two-speed asynchronous motor.



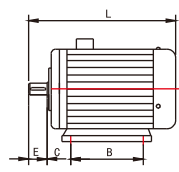
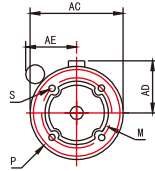
B5



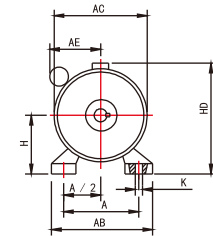
B34



B14



B3



Frame size	B3 Installation size (mm)										B34 Installation size (mm)						B3, B34 Overall Dimension (mm)				
	A	A/2	B	C	D	E	F	G	H	K	M	N	P	R	S	T	AB	AC	AE	HD	L
50	80	40	63	32	9	20	3	7.2	50	5.8	55	40	70	0	M5	2.5	100	110	55	125	155
56	90	45	71	36	9	20	3	7.2	56	5.8	65	50	80	0	M5	2.5	115	120	65	135	170
63	100	50	80	40	11	23	4	8.5	63	7	75	60	90	0	M5	2.5	130	130	70	165	230
71	112	56	90	45	14	30	5	11	71	7	85	70	105	0	M6	2.5	145	145	95	180	255
80	125	62.5	100	50	19	40	6	15.5	80	10	100	80	120	0	M6	3	160	165	110	200	295
90S	140	70	100	56	24	50	8	20	90	10	115	95	140	0	M8	3	180	185	120	220	310
90L			125																		355
100	160	80	140	63	28	60	8	24	100	12	130	110	155	0	M8	4	205	200	130	260	430
112	190	95	140	70	28	60	8	24	112	12	130	110	160	0	M8	4	245	250	140	300	455
132S	216	108	140	89	38	80	10	33	132	12	165	130	200	0	M10	4	280	290	155	350	525
132M			178																		565

Frame size	Axis Extension Size (mm)				B14 Installation size (mm)						B14 Overall Dimension (mm)				B35, B5 Installation size (mm)						B5 Overall Dimension (mm)			
	D	E	F	G	M	N	P	R	S	T	AC	AD	AE	L	M	N	P	R	S	T	AC	AD	AE	L
50	9	20	3	7.2	55	40	70	0	M5	2.5	110	75	55	155	-	-	-	-	-	-	110	75	60	155
56	9	20	3	7.2	65	50	80	0	M5	2.5	120	80	65	170	-	-	-	-	-	-	120	80	75	170
63	11	23	4	8.5	75	60	90	0	M5	2.5	130	100	70	230	115	95	140	0	10	3	130	100	85	230
71	14	30	5	11	85	70	105	0	M6	2.5	145	110	95	255	130	110	160	0	10	3.5	145	110	95	255
80	19	40	6	15.5	100	80	120	0	M6	3	165	120	110	295	165	130	200	0	12	3.5	175	120	110	300
90S	24	50	8	20	115	95	140	0	M8	3	185	130	120	310	165	130	200	0	12	3.5	185	130	120	335
90L								0										335						0
100	28	60	8	24	130	110	155	0	M8	4	200	180	130	430	215	180	250	0	15	4	220	180	130	430
112	28	60	8	24	130	110	160	0	M8	4	250	190	140	455	215	180	250	0	15	4	250	190	140	455
132S	38	80	10	33	165	130	200	0	M10	4	290	210	155	525	265	230	300	0	15	4	290	210	155	525
132M								0										565						0