

NEMA series



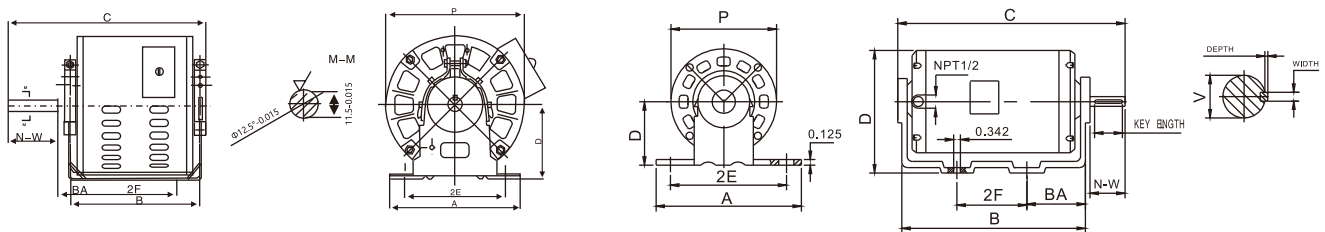
SBD Vibration-proof Motor-NEMA 56 Frame single-phase-ODP(IP21-IP54)

Model	Rated power		Speed (r/min)		Full Load Current In(A)		Max Torque Rated Torque	Eff (η%)			Power Factor CosΦ			Service Factor
	(HP)	(kW)	50HZ	60HZ	At115V	At230V		% of full load			% of full load			
							50	75	100	50	75	100	SF	
SBD-5602-Y	0.50	0.37	2820	3425	5.16	2.58	0.6	54	60.3	68	0.64	0.78	0.92	1.2
SBD-5612-Y	0.75	0.55	2820	3425	7.46	3.73	0.6	55	64.5	69	0.63	0.78	0.93	1.2
SBD-5622-Y	1	0.75	2820	3425	9.8	4.9	0.5	56	65	71	0.64	0.78	0.94	1.2
SBD-5632-Y	1.5	1.1	2820	3425	14.16	7.08	0.45	56	65	72	0.64	0.78	0.94	1.2
SBD-5604-Y	0.37	0.25	1420	1725	3.6	1.8	0.5	48	56	66	0.63	0.78	0.92	1.2
SBD-5614-Y	0.50	0.37	1420	1725	5.16	2.58	0.5	49	57	67	0.64	0.78	0.93	1.2
SBD-5624-Y	0.75	0.55	1420	1725	7.68	3.84	0.46	49	57	67	0.64	0.78	0.93	1.2
SBD-5634-Y	1	0.75	1420	1725	10.1	5.05	0.45	50	58	68	0.65	0.80	0.95	1.2

ZS158(SBD) Two speed Vibration-proof Motor-NEMA 56 Frame Single-phase-ODP(IP21-IP54)

Model	Rated power		Speed (r/min)		Full Load Current In(A)		Max Torque Rated Torque	Eff (η%)			Power Factor CosΦ			Service Factor
	(HP)	(kW)	50HZ	60HZ	At115V	At230V		% of full load			% of full load			
							50	75	100	50	75	100	SF	
ZS158(SBD)-56-YT1-4/6	1/4	0.18	1425	1725	3.0	1.5	0.6	39	48	58	0.62	0.78	0.92	1.15
	1/12	0.06	920	1160	1.3	0.65	0.7	36	42	48	0.63	0.79	0.92	1.15
ZS158(SBD)-56-YT2-4/6	1/3	0.25	1425	1725	3.7	1.85	0.65	46	52	63	0.62	0.79	0.93	1.15
	1/10	0.075	920	1160	1.45	0.72	0.72	36	44	50	0.62	0.78	0.92	1.15
ZS158(SBD)-56-YT3-4/6	1/2	0.37	1425	1725	5.2	2.6	0.55	47	56	65	0.64	0.78	0.94	1.15
	1/6	0.12	920	1160	2.16	1.08	0.65	38	46	52	0.62	0.76	0.93	1.15
ZS158(SBD)-56-YT4-4/6	3/4	0.55	1425	1725	7.5	3.75	0.5	48	57	66	0.64	0.78	0.94	1.15
	1/4	0.18	920	1160	3.2	1.6	0.6	42	46	54	0.62	0.76	0.93	1.15

SBD (ZS158) motor installation dimension



48

56

Model	H	A	B	C	D	E	F	G	K	K1	AB	AC	HD	L
SBD(ZS158)	93	120	76	65	12.7	50	/	11.6	30	9	160	160	178	246