

Hotel Suites In Nature

Accommodations for
Nature BNB and
Glamping Sites



Construction and materials

- Heavy Duty and Solid Curved structure
- Expertly handcrafted each ribbed structure.
- 60x60mm within 4mm thickness rids as framing struts, included anchorage

Roof and Exterior

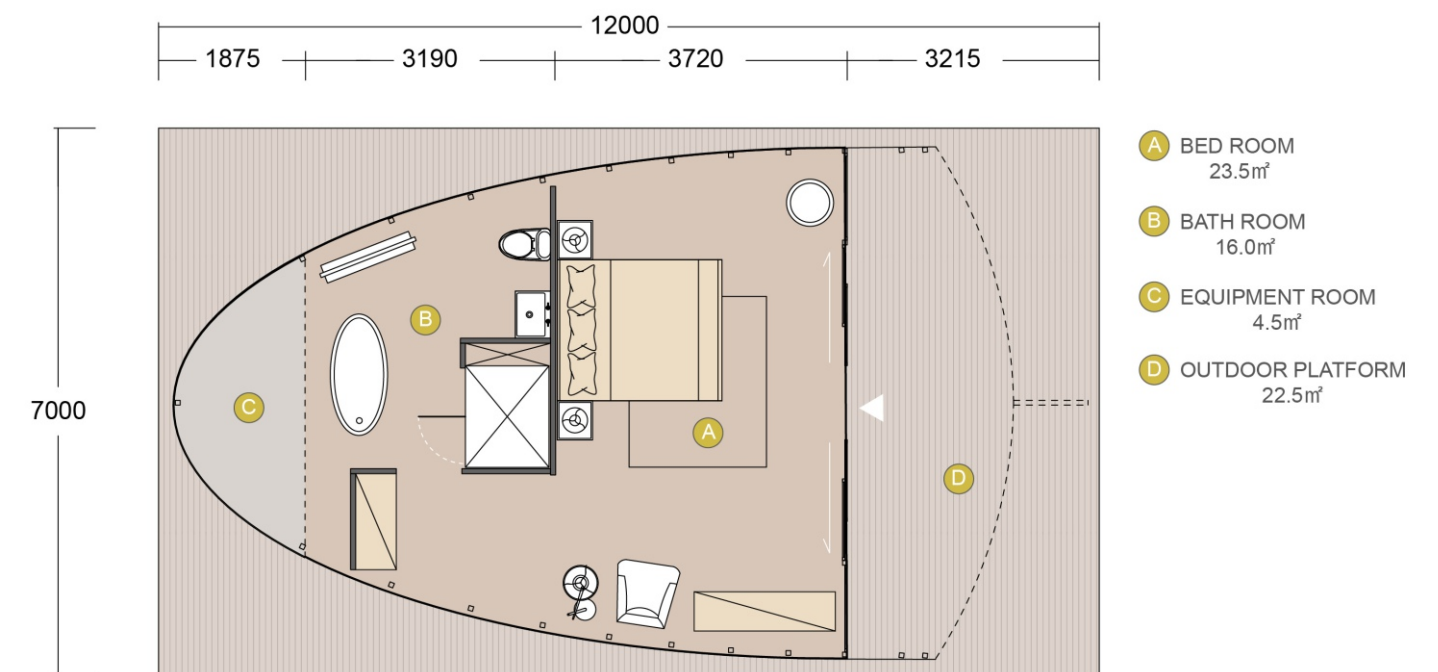
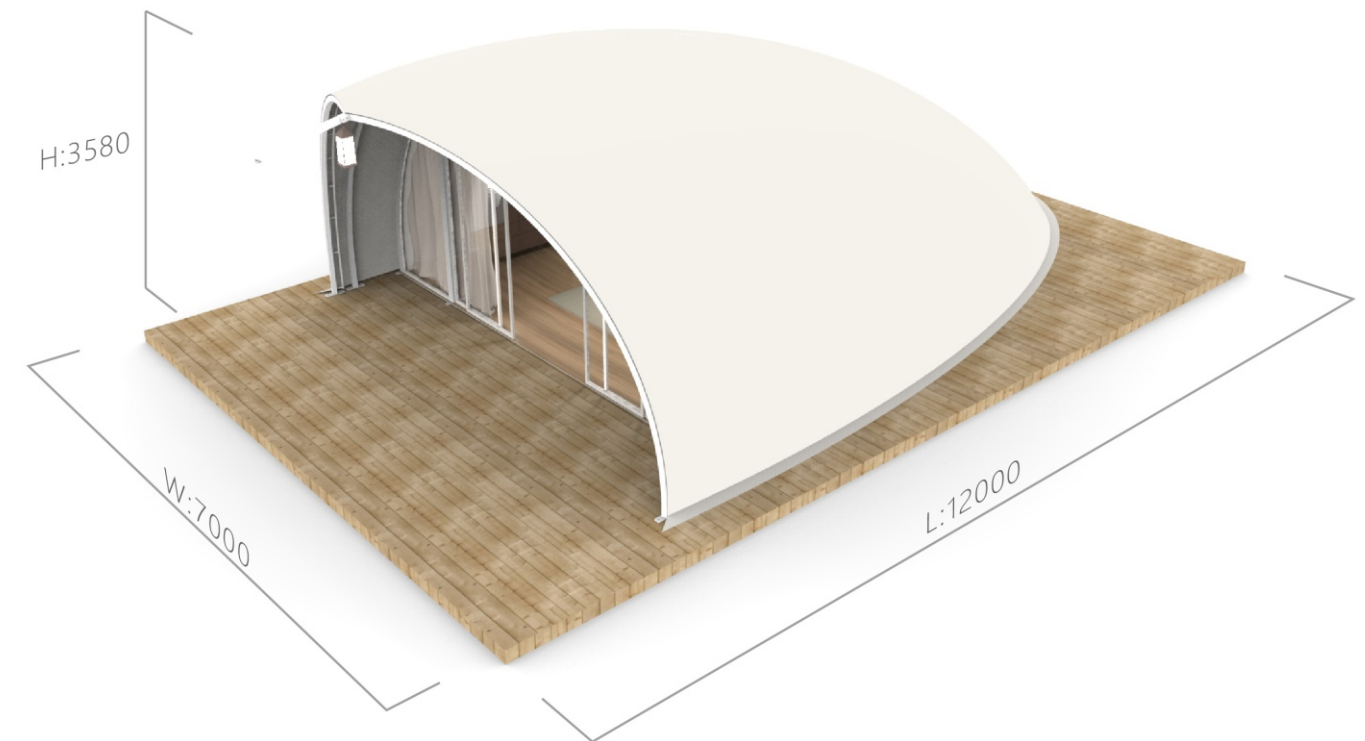
- Architectural Membrane Structure PVC/PVDF are available for option.
- Waterproof Membrane PVC 850 GSM/ PVDF 1050 GSM
- Various Colors available for options
- UV resistant,100% waterproof;
- Operating temperatures:-40 to 75 degree;
- Expected lifespan:5 - 10 years(depends on the real climate situation)

Interior and Insulation

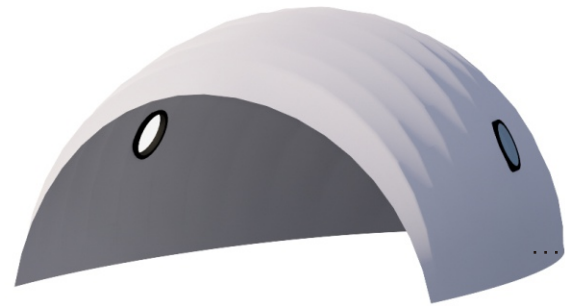
- Inner Linnings eliminates the mositure dew
- With a safety standard for flammability testing (UL 94-2013)
- Insulation Sheets, Aluminum foil _ bubble+ aluminum foil, with fire-retardant(certified)
- Oxy-Tech Cotton for Winter Version, Wellness and with R Valve (Certificated)

Panoramic Façade

- Full-wall side fixed double-glazed glass
- Unique curved cutting glasses
- Entry double glazed glass sliding doors with alu-frame with key lock
Anti-mosquito net layer
- Bolin design connection and sealing solution



Cocoon



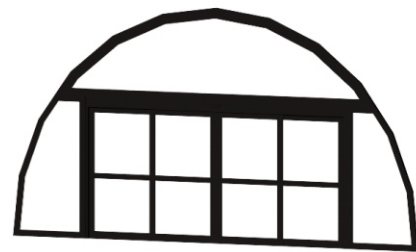
..... PVDF Outer Membrane



..... Steel Structure Framework



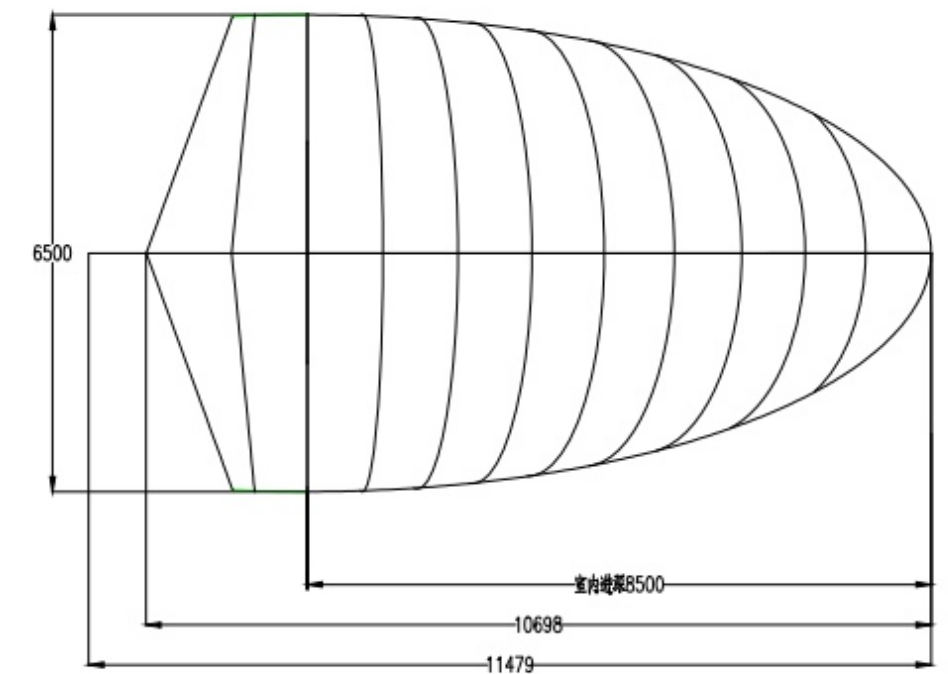
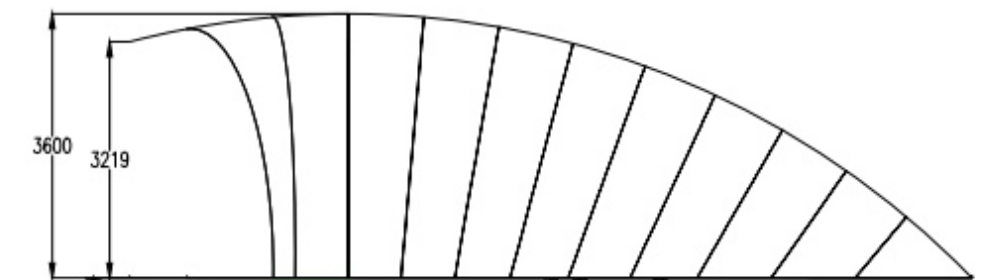
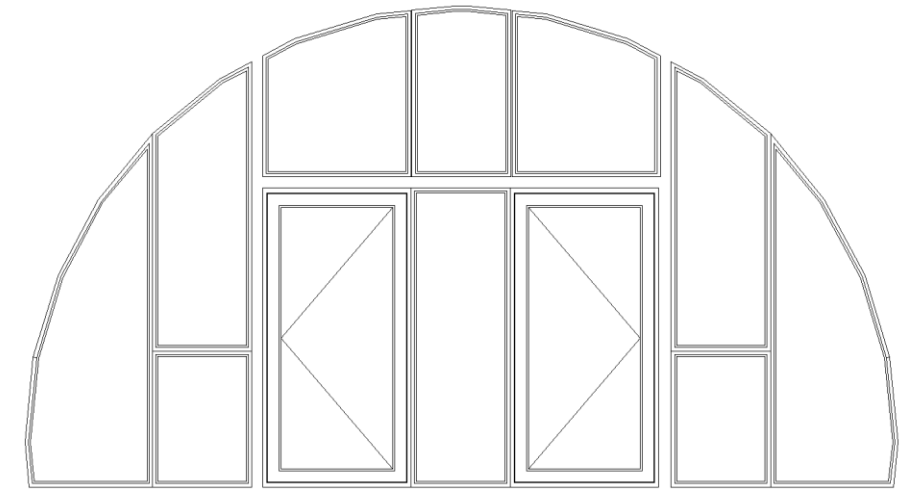
..... Inner Lining + Insulating Layer



..... Glass Door



..... Wooden Platform





Accommodations for
Nature BNB and
Glamping Sites











Cocoon

Our Luxury Range has been designed for the high-end experiential market with a focus on the detail. Each immersive design is unlike any tent on the market with the ability to transform a tent into a superior performance tent, we like to call it 'looks like a tent, built like a house'. With thermally insulated walls and ceiling, each one of the tents offers exceptional energy efficiency, ensuring optimal comfort year-round.



UNIQUE DESIGNS

Each tent is designed with sustainable designs, you are able to offer a different experience to your guests.



GREENER FOOTPRINT

Eco Structures eco-friendly system ensures a greener footprint with, Eco Anchors, GOTS Certified - Global Organic Textile Fabric, endlessly recyclable structural steel system and reducing carbon footprint through flatpack designs.



FORWARD THINKING

The Hybrid Tent features Wall Panels that are R3.3 insulation. We know no other competitor in the market can achieve this level of performance in a tent. No canvas bubble wrap, foil insulation or SIP panel on the market can compete with the Panels performance.



ENERGY EFFICIENT

By investing in this hybrid tent, you not only provide exceptional comfort but also save on air conditioning and heating costs, maximizing returns per square meter of your property.





superior air and water resistance



PIR insulation Core for high thermal efficiency



Up to 7 years warranty



Use any exterior and interior cladding to finish



Extremely lightweight for easy installation

Require less maintenance
Minimise additional insulation costs
Fire resistance
Hypoallergenic
Moisture resistant
Extremely Large landscape Viewing
Unique Shade, Melt into Nature

EASE OF ASSEMBLY

Cocoon Structural can be easily lifted into position by a small team. joints are fixed with bolts & Screws, with no requirements for mechanical support.

INTERNAL & EXTERNAL FINISHES

Suitable for any finish, internal and external, including the fixing of alternative sheeting such as Colorbond or Hardiplank.

COST EFFECTIVE

An investment saving clients on additional thermal insulation and heating and cooling expenses.

INDUSTRY LEADING

This single product is a significant advancement and innovation in the building construction industry.



x 165 more

Thermally efficient than a single skin canvas wall



x 30 Acoustic

dB rating than a single skin canvas wall



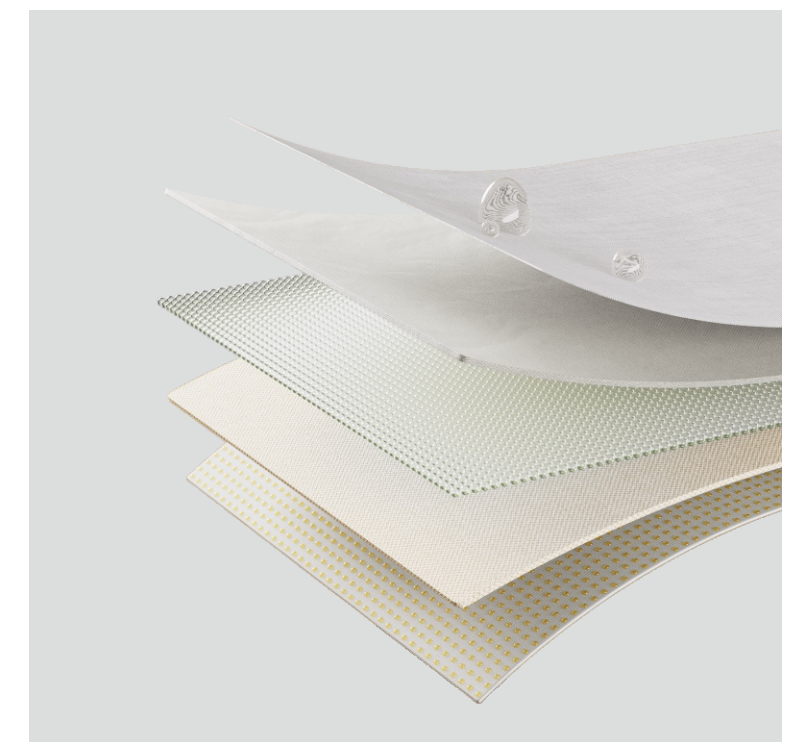
Structurally

built as a house



x 30 Acoustic

Able to withstand hail and snow loads



ECO TENT INCLUSIONS

- PVC Roof
- Canvas Ceiling and Walls
- Mesh doors and windows
- Steel structural frame - hot dipped galvanised steel
- All fixings required for install

HYBRID TENT INCLUSIONS

- PVC Roof
- Canvas Insulated Ceiling
- Panels
- External Canvas Cladding
- Glass Sliding Doors
- Steel structural frame - hot dipped galvanised steel
- All fixings required for install

SERVICE INCLUSIONS

- Warranties
- Architectural & Engineering drawings
- Shipping support to your choice of port (additional charges)
- Local transport from port to site (To be advised as per country & project specifications)

SERVICE EXCLUSIONS

- Land & Access- Site preparation as per our suggestions
- Local Labour- Eco Structures can provide construction managers
- Architectural support- Eco Structures can provide at an additional Charge

WARRANTY



Wall panels
7 Year Limited
warrant20 Year Estimated Life



Floor joist and Bearers Blue Scope Lysaght 200C
10 Year Limited Warranty
20 Year Estimated Life



Hot Dipped Gaivanized Stuctural Steel Frame
15 Yeer Limited warranty
25-50 Year Estimated Life



Eco Anchor
10 Year Limited Warranty
50 Year Stuctural Design Warranty



RT2 Canvas
5 Year Limited warranty
10-12 Year Estimated Life



Flooring WPC Extemal Board
5 Year Limited Warranty
10 Year Estimated Life



Guangzhou Bolin Tent Co., Ltd.

Add: No.110, No.4 Wenqiao Road, Panyu District,
Guangzhou City, Guangdong Province, China. 511400.

T: +86 185 7860 7406

E: info@bolintents.com

W: www.bolintent.en.alibaba.com