

Xi'an Xianyang Internationality Airport Metal Ceiling Project

Project introduction and architectural overview

For this expansion, XINENZE was involved in the design and installation of the ceiling inside the airport using products such as geometrically shaped metal panels, and curved aluminum panels, with golden and white as the dominant colors of the design, creating a unique staggered arrangement of suspended ceilings, presenting a clean and fresh design style.

Project timeline

2024.8-2024.12

Exterior/Interior/Hanging System

Products We Offer

[Custom Aluminum Ceiling](#)

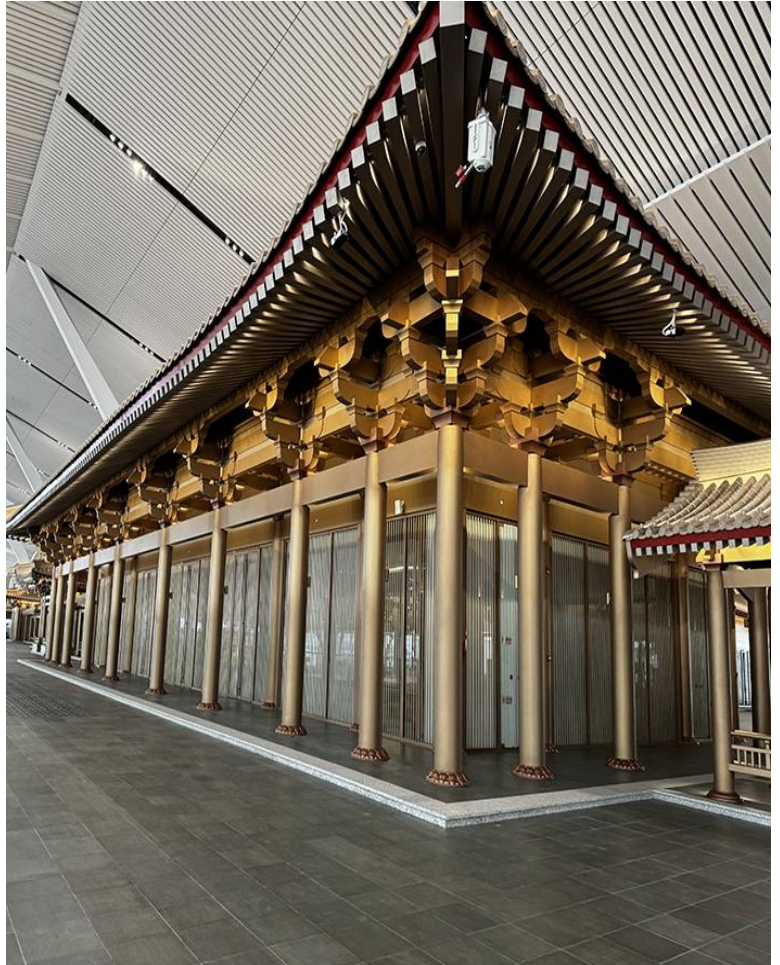
[Curved Metal Plank](#)

Application Scope

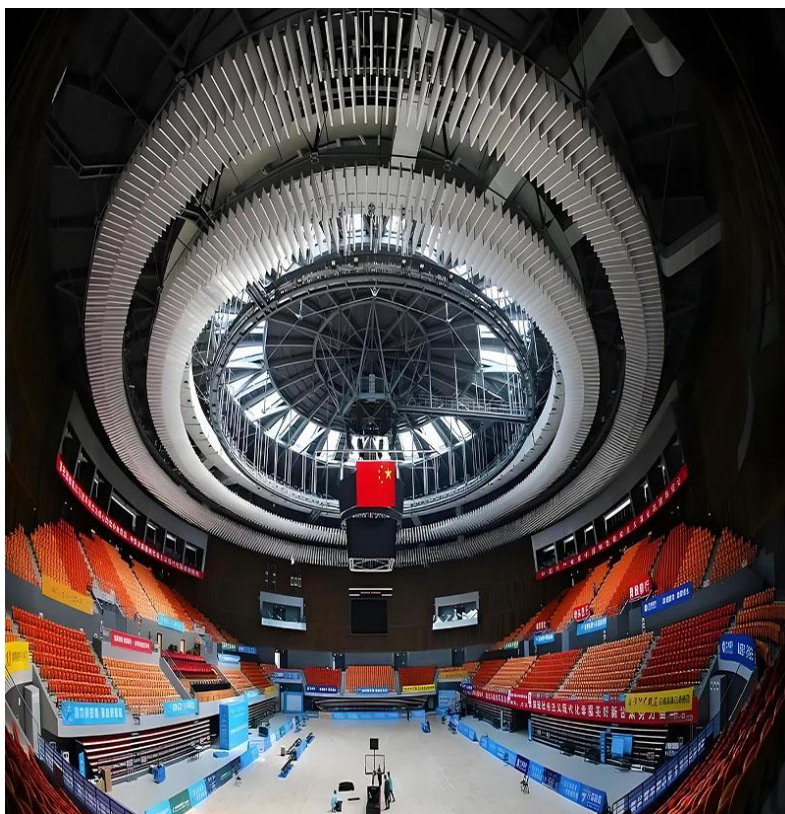
Airport Terminal Ceiling

Services We Offer

Planning product drawings, demonstrating 3D models, cross-referencing product information multiple times, material selection, processing, and production of the product, as well as providing technical guidance and support during construction.



Lanzhou Stadium Metal Ceiling Project



XINENZE was involved in the design and installation of the interior of the Lanzhou Sports Stadium, utilizing a white aluminum baffle ceiling system to create a clean, open, and transparent design style.

Project timeline

2020.8-2021.6

Exterior/Interior/Hanging System

Products We Offer

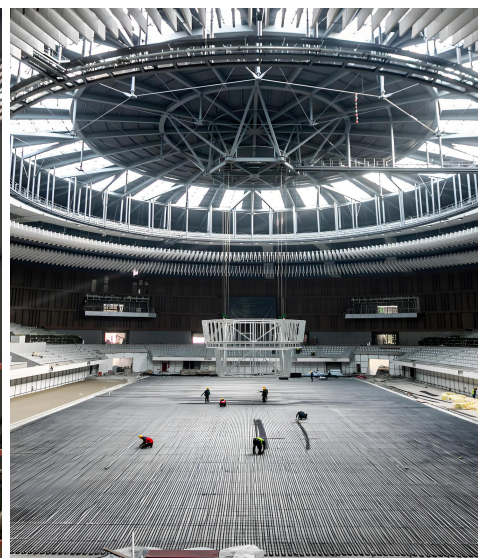
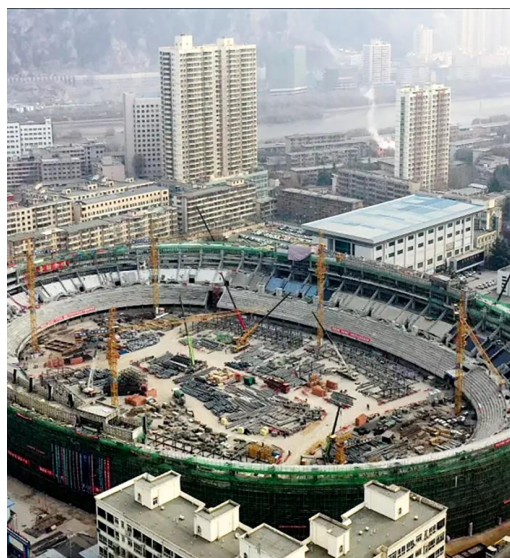
[Aluminum Baffle Ceiling](#)

Application Scope

Stadium Metal Ceiling

Services We Offer

Planning product drawings, demonstrating 3D models, cross-referencing product information multiple times, material selection, processing, and production of the product, as well as providing technical guidance and support during construction.



The Cray Seafood & Grill Restaurant Project

The Cray Seafood & Grill restaurant project combines aesthetic appeal with functional design to enhance the dining experience. Our interior ceiling and wall coverings create a welcoming atmosphere while absorbing sound, ensuring comfort. Custom engraved panels and logos reinforce the brand identity and add elegance. This project demonstrates how innovative suspension system products can transform a space, showcasing the restaurant's culinary delights and leaving a lasting impression on guests.

Project timeline

2023.12-2024.3

Exterior/Interior/Hanging System

Products We Offer

[Sky-Curve Panel](#)

Metal Carving Panel

Metal Logos

Application Scope

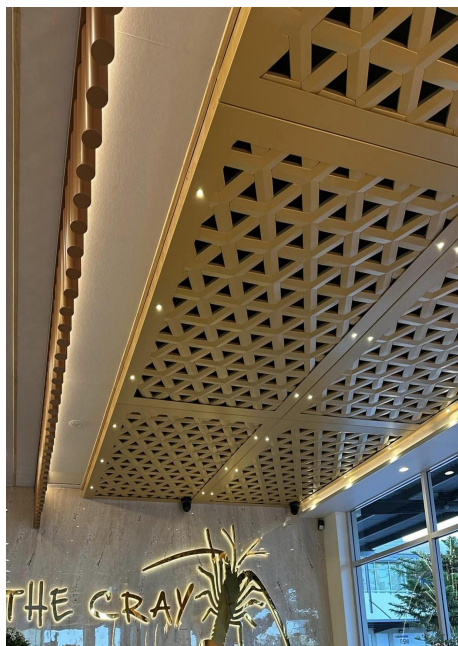
Restaurant Metal Ceiling

Services We Offer

Planning product drawings, demonstrating 3D models, cross-referencing product information multiple times, material selection, processing, and production of the product, as well as providing technical guidance and support during construction.



The Cray Seafood & Grill Restaurant Project



Swisstouches Resort Hotel

The Swisstouches has been dedicated to creating a high-quality Chain Hot Spring Hotel. The products provided by XINENZE have won the trust and praise of customers with their excellent quality and exquisite design.



Project timeline

2021.9-2022.1

Exterior/Interior/Hanging System

Products We Offer

[Metal wave ceiling](#)

[Aluminum Facade Blades](#)

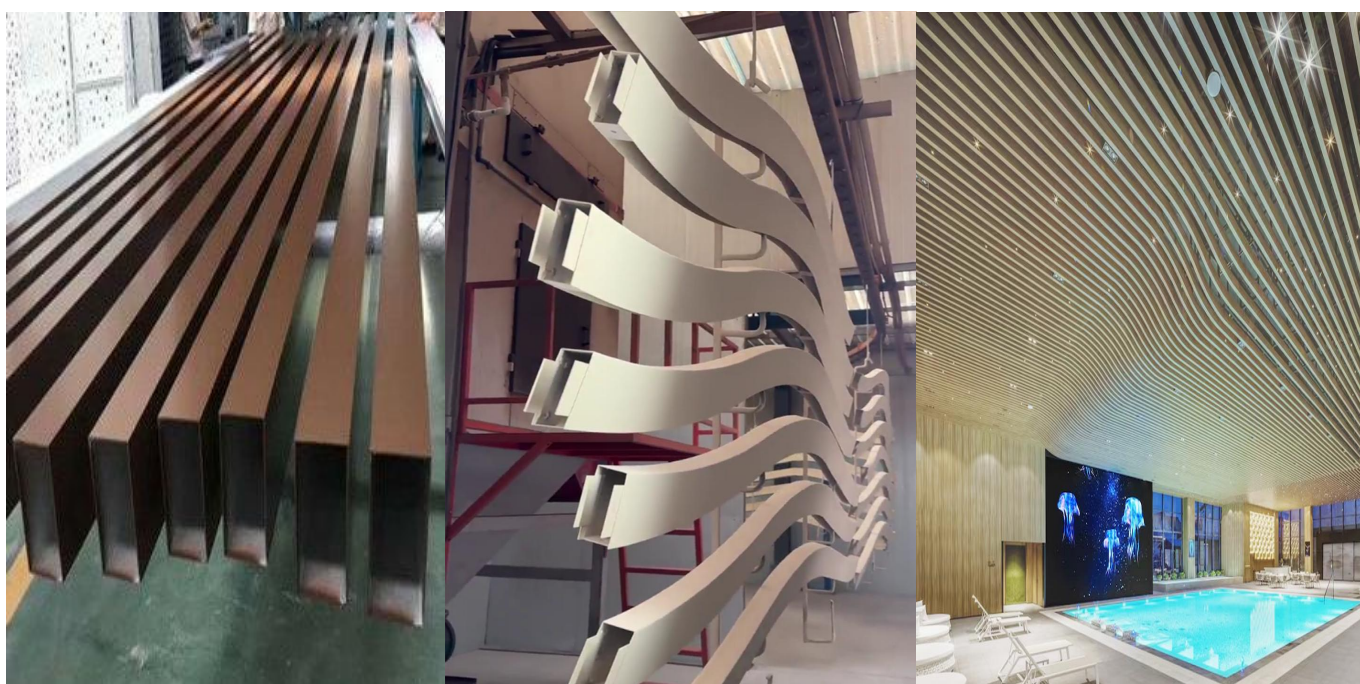
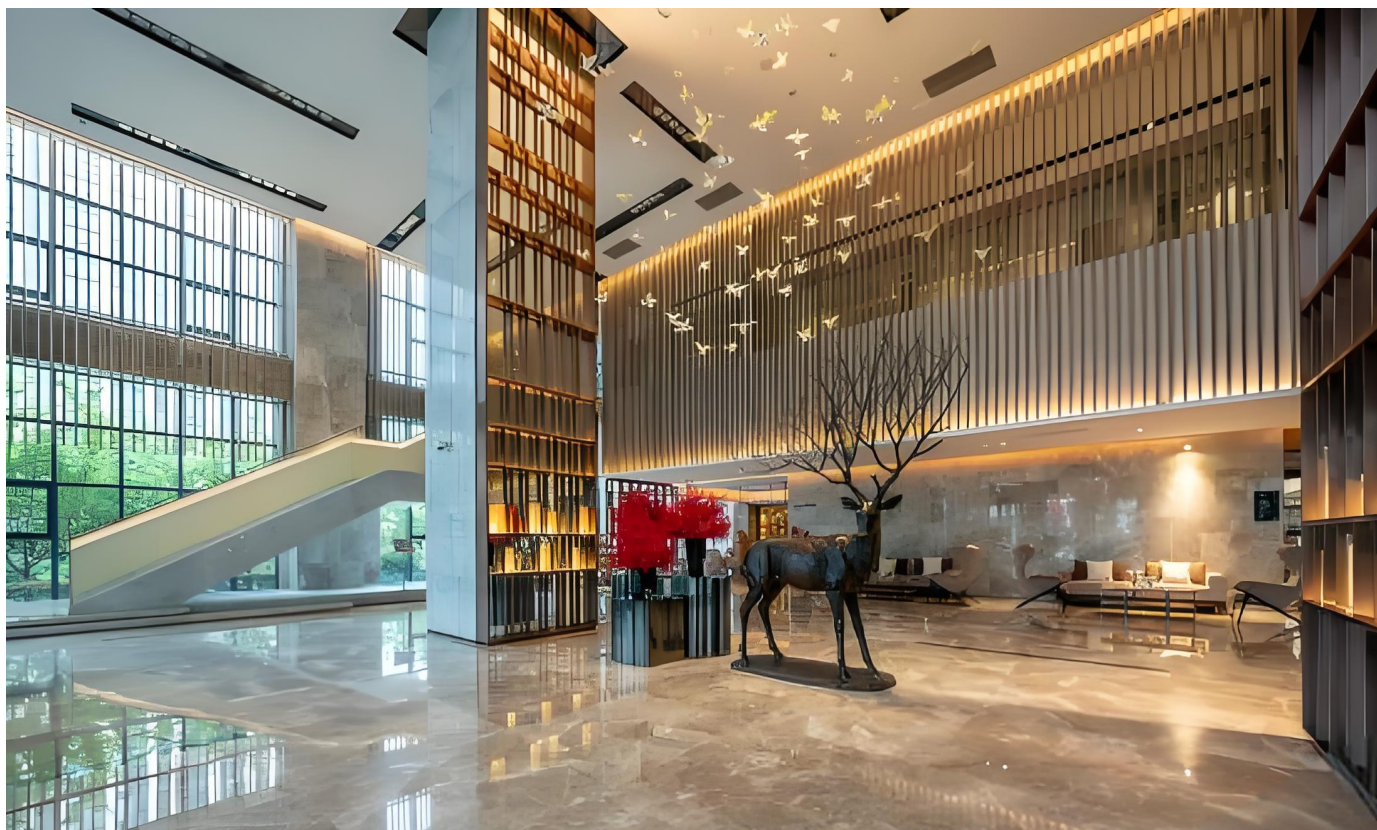
Application Scope

Hotel Metal Ceiling

Services We Offer

Planning product drawings,
demonstrating 3D models,
cross-referencing product information
multiple times, material selection,
processing, and production of the
product, as well as providing technical
guidance and support during
construction.

Swisstouches Resort Hotel



The Yanliang Aviation Supply C



The only national integrated delivery platform that combines airborne and major component raw material supply with full industry chain services and support. XINENZE's main supply task was the cladding columns & facade for the Aviation supply chain supporting projects of the Yan Liang International Airport

Project timeline

2023.12-2024.5

Metal facade systems

Products We Offer

Flat Metal Panel

Curved Metal Panels

Application Scope

Factory Metal Facade System

Services We Offer

XINENZE's main supply task was the cladding columns & facade for the Aviation supply chain supporting projects of the Yan Liang International Airport. The design of these product is unique, requiring large curvature, large radius, and the presentation effect should be the ultimate, XINENZE for this project, deepen the design scheme, to meet the high standard requirements of the A party.

The Yanliang Aviation Supply C



Equestrian venue for the 14th National Games

The Xi'an Xian New Area Equestrian Center, as one of the venues for the 14th National Games held in September 2021, had XINENZE's primary supply responsibility for the stable's ceiling system and drywall profiles.

Project timeline

2021.3-2021.6

Metal ceiling systems

Products We Offer

[Aluminum Baffle Ceiling](#)

[Drywall Studs & Tracks](#)

Application Scope

Metal ceiling system for stables

Services We Offer

Planning product drawings, demonstrating 3D models, cross-referencing product information multiple times, material selection, processing, and production of the product, as well as providing technical guidance and support during construction.



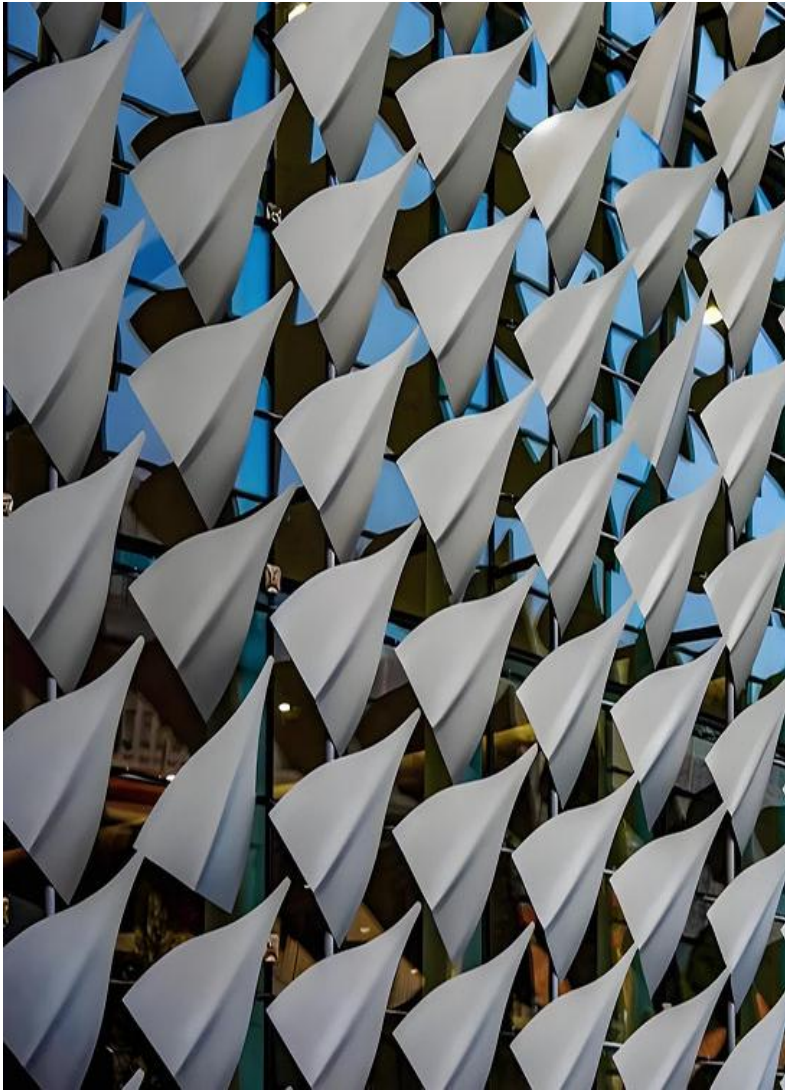
Kaiyuan Grand Theatre Project

The Kaiyuan Grand Theatre is the first comprehensive modern theatre in the northern district of Xi'an. Its establishment not only fills the gap of large public cultural venues in the surrounding area but also aims to become a new cultural landmark for the residents of Xi'an.

The exterior design of the Kaifeng Grand Theatre features a curtain wall of hollow glass and a metal shading structure. XINENZE played a crucial role in ensuring the successful execution of this new construction.



Kaiyuan Grand Theatre Project



Project timeline

2022.3-2022.10

Metal Facaded system

Products We Offer

Custom Metal Facaded system

Application Scope

Grand Theatre Curtain Wall

Services We Offer

Planning product drawings, demonstrating 3D models, cross-referencing product information multiple times, material selection, processing, and production of the product, as well as providing technical guidance and support during construction.



Shanhe Building Project



Project introduction and architectural overview

In the recent interior renovation of the Shanhe Building, XINENZE was involved in the design and installation of the office ceiling. Using products such as honeycomb panels and aluminum ceiling tiles, the design predominantly features gray and white tones, creating a unique, staggered ceiling layout that showcases a clean and refreshing design style.

Project timeline

2024.8-2024.12

Exterior/Interior/Hanging System

Products We Offer

Aluminum Honeycomb Panels

[Aluminum Baffle Ceiling](#)

Application Scope

Open Office Area/ Conference Rooms/ Meeting Rooms/ Break Rooms

Services We Offer

Planning product drawings, demonstrating 3D models, cross-referencing product information multiple times, material selection, processing, and production of the product, as well as providing technical guidance and support during construction.

Shanhe Building Project

