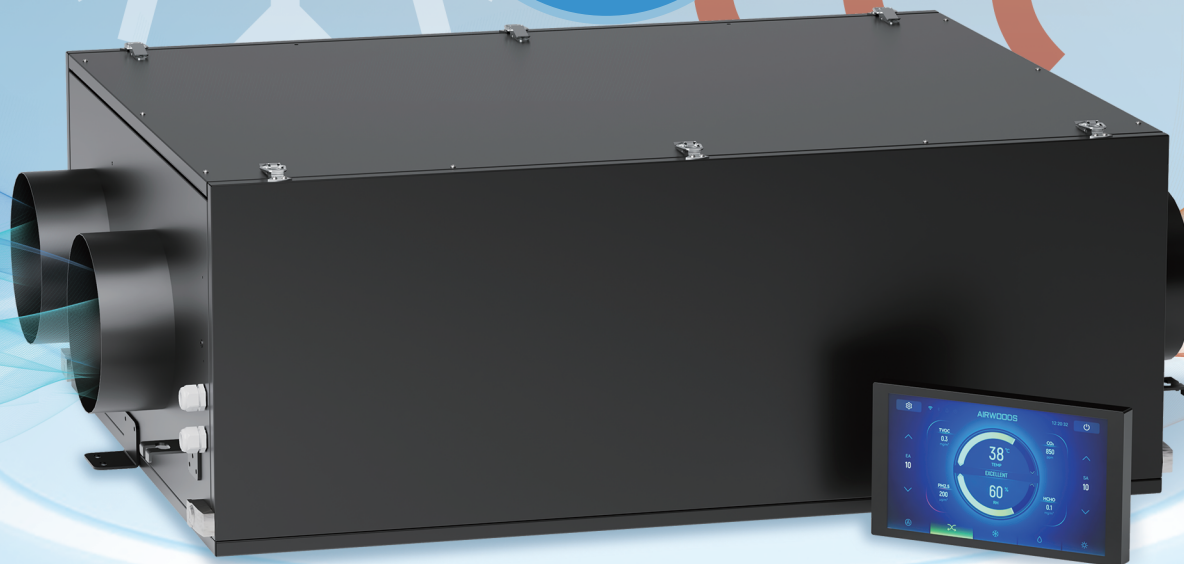


HEAT PUMP *DC INVERTER* ENERGY RECOVERY VENTILATOR



Suitable for
50~200 m²
rooms
both on
cooling/heating
and fresh air



Purification



Fresh Air
Energy Recovery



Cooling/ Heating



Dehumidification

► FEATURES



Double energy recovery, **COP over 6**.



Fresh air preconditioning, saving your electricity bill on air conditioning system.



Wide working ambient conditions: -15°C to 50°C.



Low noise level of 36/41 dB(A)



Equipped with EC fans & DC inverter compressor to minimize energy consumption.



Work as an independent air conditioner in suitable seasons and places.



Optional indoor air quality monitoring for CO₂, humidity, TVOC, and PM2.5.

► CONTROL & FUNCTIONS

- 10-speed control
- Auto bypass
- Temperature control
- Humidity control
- Defrosting
- Filter replacement alarm
- Fault alarm
- RS485 connector
- Auto restart
- Weekly timer
- Multiple signal connectors
- Smart control according to local weather
- Work with Alexa and Google Assistant

- Scenario control
- Group control
- Multiple linkage control
- Optional CO₂ control

Download the **Smart Life** App at Google Play or APP Store



► TECHNICAL PARAMETERS

Model	AV-HTPC35
Installation Type	Ceiling Mounting
Rated Airflow (CMH/CFM)	350/206
Exhaust Airflow (Ventilation Mode) (CMH/CFM)	350/206
Exhaust Airflow (Heating/Cooling Mode) (CMH/CFM)	350/206
External Static Pressure (Pa/in.w.g)	100/0.4
Noise (dB(A))	36/41
Power	220V 1Ph 50/60Hz
Dimension (mm/inches)	1050×800×395/41.34×31.50×15.55
Weight (kg/lbs)	100/220.46
Air Inlet/Outlet Diameter (mm/inches)	195/7.68
Air Inlet/Outlet Height (mm/inches)	40/1.57
Machine Base Height (mm/inches)	40/1.57
Drainage Pipe	G1/2 21mm/0.827inch
Refrigerant	R32
Refrigerant Charge (g/lbs)	300/0.66

Ventilation Mode	
Temperature Efficiency (Heating) (%)	75.4
Temperature Efficiency (Cooling) (%)	66.3
Enthalpy Efficiency (Heating) (%)	71.1
Enthalpy Efficiency (Cooling) (%)	64.5
Input Power (W)	185
Input Current (A)	1.72
Cooling/Heating	
Nominal Cooling Capacity (W)	4100
Max Cooling Capacity (W)	4350
Input Power (Cooling) (W)	615
Operation Current (Cooling) (A)	3.41
Nominal Heating Capacity (W)	4230
Max Heating Capacity (W)	4480
Input Power (Heating) (W)	715
Operation Current (Heating) (A)	3.74



Guangzhou Airwoods Environment Technology Co., Ltd.

www.airwoods.com

www.airwoods-comfort.com

info@airwoods.com