



## AI Parking System Manufacturer

Shenzhen Tengda Intelligent Technology Co., Ltd

Tel: (+86) 13728677091

Whatsapp: (+86) 13728677091

E-mail: [roger@tdzntech.com](mailto:roger@tdzntech.com)

Website: <http://www.tengda-global.com>

Office Add: 5th Floor, 2018 Creative Park, 93A, Gushu First Road,  
Bao'an District, Shenzhen, China

# COMPANY PROFILE



Shenzhen Tengda technology co,ltd is a specialized new enterprise and high-tech enterprise focusing on the research and development, production, sales and service of intelligent security equipment. The company was founded in 2015 and is located in Shenzhen City. We have more than 110 workers and covering an area of 5000 squares. has its own R&D, production, sales and service teams, and has many projects and customers at home and abroad. Its products are exported to the world and have won praise from domestic and foregin customers unanimously praised.

Our company' smain product series include: intelligent prdestrian passage systems, unattended parking lot solutions, Software development, etc. Meanwhile, all our products have ISO certificates and CE certificates, and the software also has coyprights.

# TENGDA STRENGTH

**15+years**

Parking System Experiences

**10+Items**

Patent Technology

**10+Items**

Software Copyright/Testing Report

Nearly 20+ R&D Engineers

More than 30 Sales people

More than 120 Factory workers



## >> Support Areas:

Chile

Korea

Vietnam

Canada

Macao

India

Africa

Brazil

Europe (EU)

Hong Kong

Australia

Indonesia

Saudi Arabia

Angola

Singapore

Japan

Thailand

Türkiye

United States

Uzbekistan

Taiwan

Malaysia

Iraq

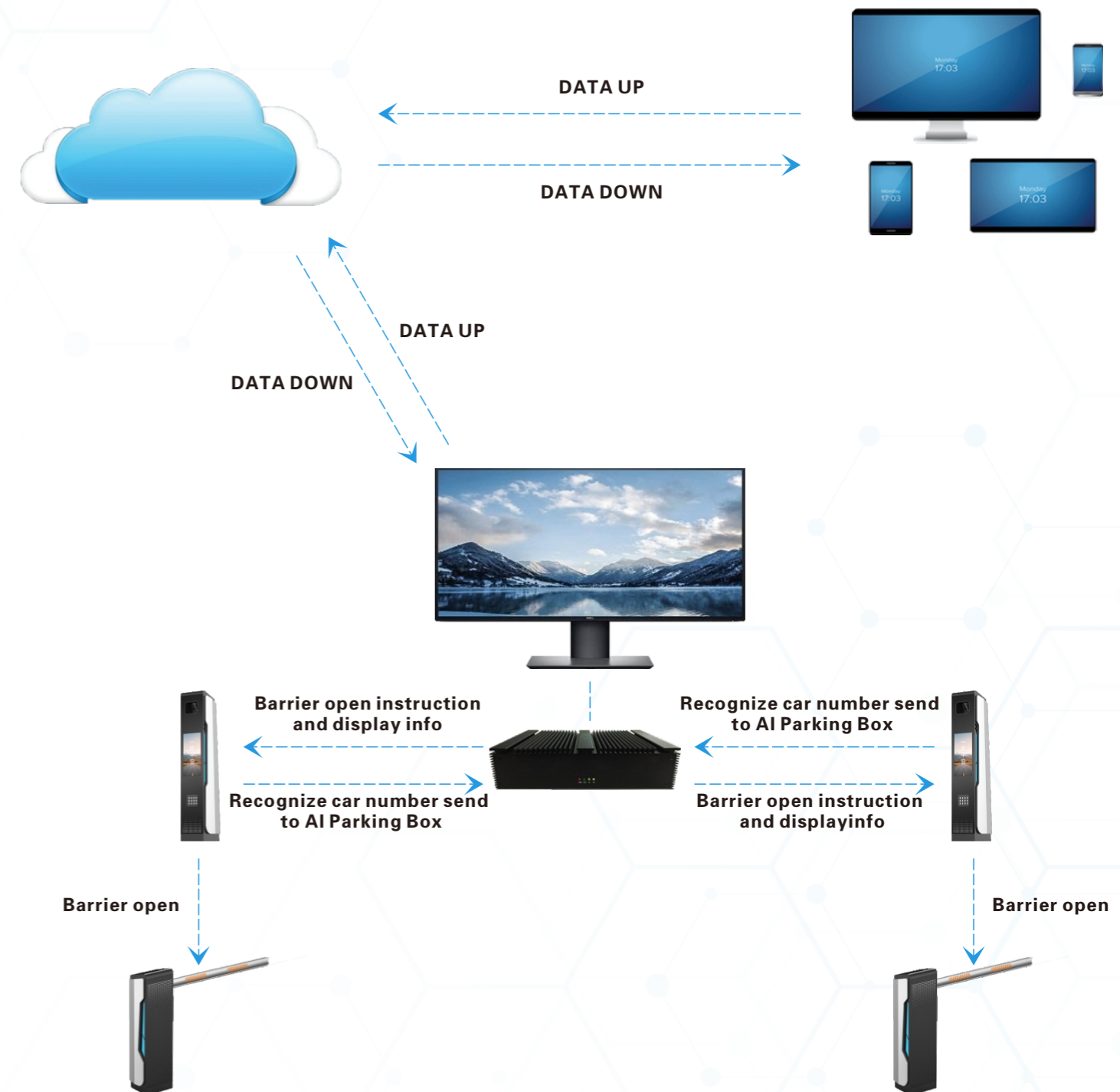
The United Arab Emirates

....To be continued

# Solution Introduction

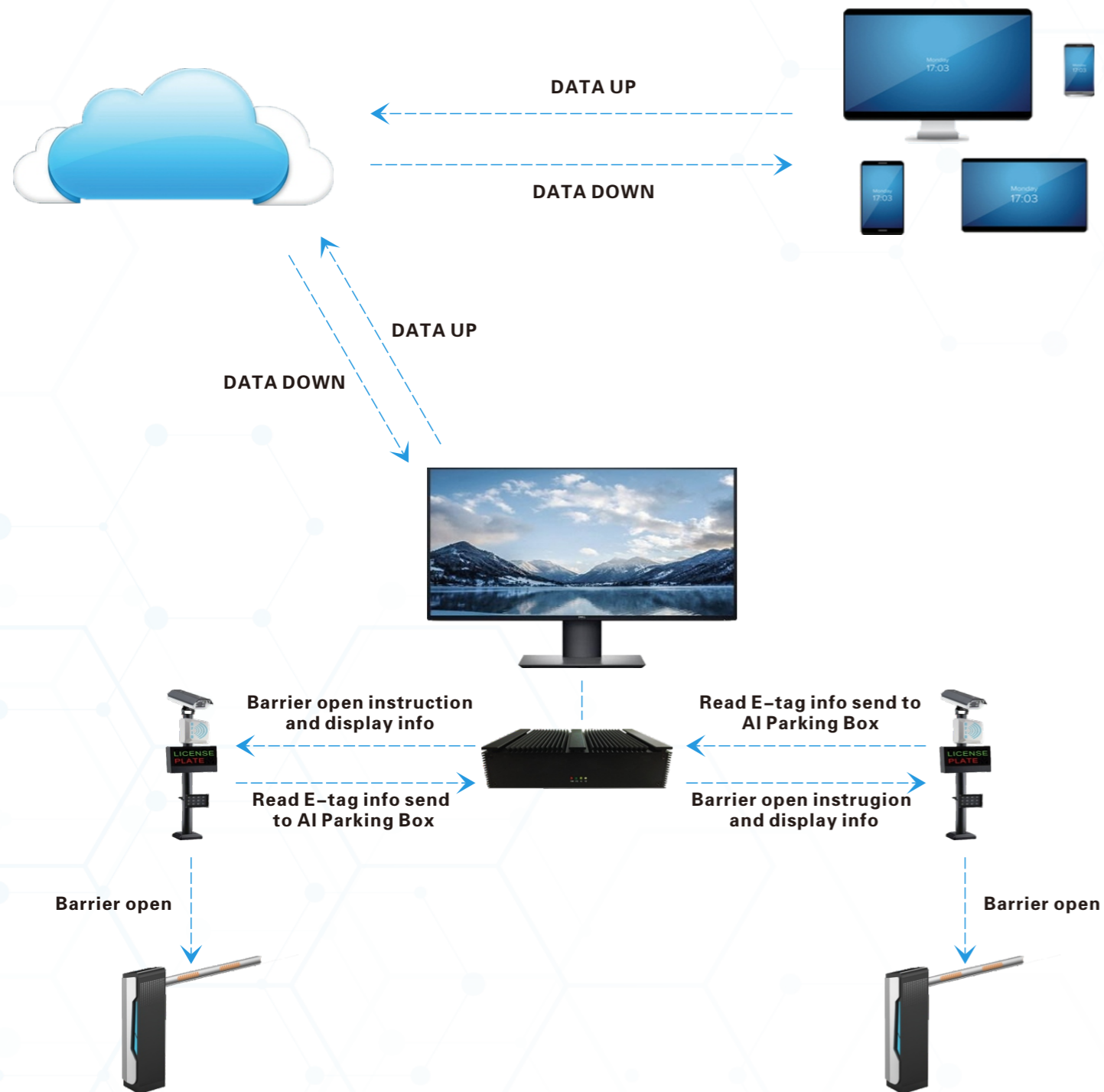


## LPR System Solution Introduction



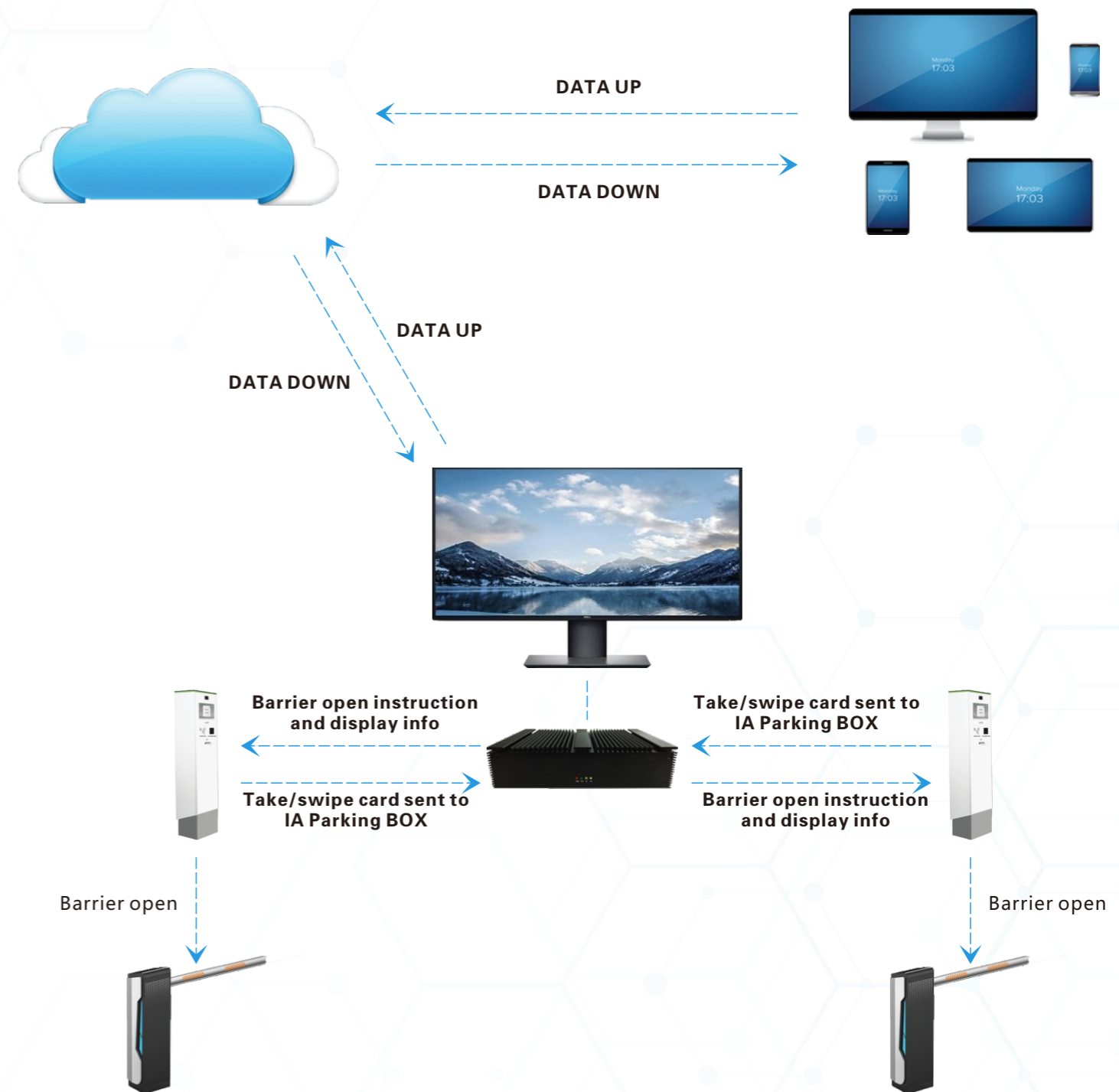
# LPR+RFID System

## Solution Introduction

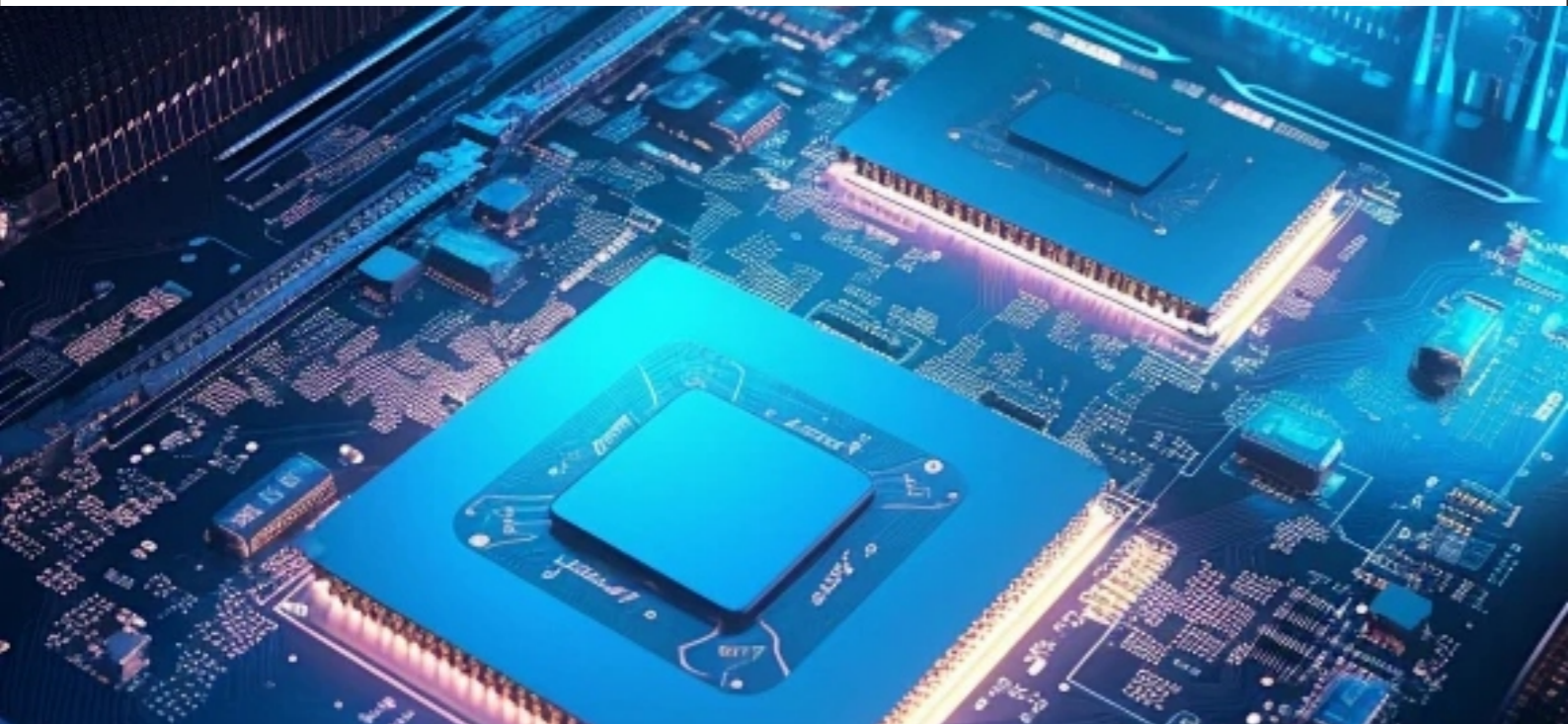


# Ticket parking System

## Solution Introduction



# Hardware Introduction



**It is a special terminal device mainly used for parking lot entrance and exit management.**

**Linux system architecture, which has the advantages of a more stable system and easier installation;**

**12V power interface, low power consumption, and more power saving;**

**The unique database protection mechanism perfectly solves the problem of database loss caused by unexpected power outages of PC;**

**Using C/S+B/S architecture, it only takes four steps to complete the parking system configuration;**

**Support mobile phone remote setting and demand customized development;**

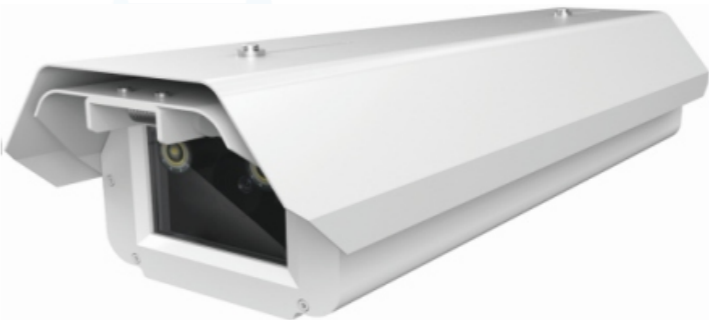
# AI Parking BOX

## Hardware Introduction

Model No	TD-PA-ZD101	TD-PA-ZD201	TD-PA-ZD301
Product images			
Applicable scenarios	Shopping mall hospital Community	Large supermarkets airports high-speed rail stations	Any unattended parking lot
Product size	198*128*58mm	310*195*65mm	310*195*65mm
hardware configuration	Dual-core 1.5GHz high-speed 32-bit processor 1.5T 1GB memory 128GB 4 network ports	Quad-core 1.5GHz high-speed 64-bit processor 2.5T 4GB memory 128GB 8 network ports	Quad-core 1.5GHz high-speed 64-bit processor 2.5T 4GB memory 128GB 8 network ports
software function	<ul style="list-style-type: none"><li>▲ B/S+C/S architecture;</li><li>▲ Various charging rules (Meet more than 90% of market demands);</li><li>▲ Support LAN + Network remote login;</li><li>▲ Support 4-channel monitoring ;</li><li>▲ Support multiple spaces and vehicles;</li><li>▲ Support electronic coupons;</li><li>▲ Support unified management of large and small parking lots;</li><li>▲ Supports unattended configuration;</li><li>▲ Time-based management and control channels;</li><li>▲ Restriction of odd and even number traffic;</li><li>▲ Support mobile phone remote setting;</li><li>▲ Centralized management and control of cloud platforms;</li><li>▲ Parking lot alarm push to cloud;</li><li>▲ Support Cloud service remote settings;</li><li>▲ Supports 2 in and 2 out;</li></ul>	<ul style="list-style-type: none"><li>▲ B/S+C/S architecture;</li><li>▲ Various charging rules (Meet more than 90% of market demands);</li><li>▲ Support LAN + Network remote login;</li><li>▲ Support 4-channel monitoring ;</li><li>▲ Support multiple spaces and vehicles;</li><li>▲ Support electronic coupons;</li><li>▲ Support unified management of large and small parking lots;</li><li>▲ Supports unattended configuration;</li><li>▲ Time-based management and control channels;</li><li>▲ Restriction of odd and even number traffic;</li><li>▲ Support mobile phone remote setting;</li><li>▲ Centralized management and control of cloud platforms;</li><li>▲ Parking lot alarm push to cloud;</li><li>▲ Support Cloud service remote settings;</li><li>▲ Support ETC deduction;</li><li>▲ Supports 4 in and 4 out;</li></ul>	<ul style="list-style-type: none"><li>▲ B/S+C/S architecture;</li><li>▲ Various charging rules (Meet more than 90% of market demands);</li><li>▲ Support LAN + Network remote login;</li><li>▲ Support multiple spaces and vehicles;</li><li>▲ Support electronic coupons;</li><li>▲ Support unified management of large and small parking lots;</li><li>▲ Supports unattended configuration;</li><li>▲ Time-based management and control channels;</li><li>▲ Restriction of odd and even number traffic;</li><li>▲ Support mobile phone remote setting;</li><li>▲ Centralized management and control of cloud platforms;</li><li>▲ Parking lot alarm push to cloud;</li><li>▲ Support Cloud service remote settings;</li><li>▲ Support 16 channels monitoring on the same screen;</li><li>▲ Support more than 8 channels of HD video surveillance;</li><li>▲ Supports 4 in and 4 out;</li></ul>

# Parking Lot LPR CAMERA

## Hardware Introduction



Model No:TD-PA-XJ201



Parameters Description		
Imaging parameters	sensor	500W 1/2.7 inch CMOS
	resolution	2884 (H) x 1624 (V)
	low-light (level)	0.1LUX
	Standard lens	4mm prime lens
recognition algorithm	Capture rate	≥99%
	discrimination	≥98%(Typical license plate)
	Adapt speed	0-40Km / h
	License Plate type	Various universal license plates at home and abroad
	License plate identification characteristics	Number, color, type, and width
	License plate anti-fate	Support abnormal license plate (mobile phone photo, printing) alarm
	Unlicensed car trigger	Support for unlicensed car video trigger
	whitelist	Support accurate, intelligent fuzzy matching whitelist license plate rules
communication	protocol	SDK、HTTP、RTSP、TCP IP、UDP、RS485、IO、NTP
hardware interface	network	1 route 10 / 100Mbps adaptive RJ 45 port
	IO output	2 channel
	IO import	2 channel
reliability	Working temperature	-20℃~70℃
	Frankincense	Contact with 6KV and air with 8KV
	Power	12V DC
	Power consumption	≤5W
	Waterproof	Ip65
structure parameter	Fill the light	4 brightness adjustable LED lamp beads, power consumption≤4W
	size	440mm (L) *144mm (W) *103mm (H)

License plate recognition series

Model No:TD-PA-XP707



LED screen size	304mm*152mm(P4 full-color LED two-line display)
Resolution	Single LED module 64*32 lattice
General parameters Protection level	IP42, certain dust-proof and waterproof function
Working temperature	-20℃~70℃
Working humidity	5℃~85℃
Working voltage	AC220V
Power consumption	60W MAX
Size	1400mm×width235mm×thickness150mm
Weight	≈15kg

Model No:TD-PA-XP708



LED screen size	304mm*152mm(P4 full-color LED four-line display)
Resolution	Single LED module 64*32 lattice
General parameters Protection level	IP42, certain dust-proof and waterproof function
Working temperature	-20℃~70℃
Working humidity	5℃~85℃
Working voltage	AC220V
Power consumption	60W MAX
Size	heights1400mm×width360mm×thickness150mm
Weight	≈20kg

# License plate recognition series

## Model No:TD-PA-XP702



LED screen size	304mm*152mm(P4 full-color LED four-line display)
Resolution	Single LED module 64*32 lattice
General parameters Protection level	IP42, certain dust-proof and waterproof function
Working temperature	-20℃~70℃
Working humidity	5℃~85℃
Working voltage	AC220V
Power consumption	60W MAX
Size	heights1400mm×width360mm×thickness185mm
Weight	≈22kg

## Model No:TD-PA-XP602



LED screen size	304mm*152mm(P4 full-color LED four-line display)
Resolution	Single LED module 64*32 lattice
General parameters Protection level	IP42, certain dust-proof and waterproof function
Working temperature	-20℃~70℃
Working humidity	5℃~85℃
Working voltage	AC220V
Power consumption	60W MAX
Size	heights1550mm×width350mm×thickness130mm
Weight	≈22kg

# License plate recognition series

## Model No:TD-PA-XP706



LCD screen size	304mm*152mm(21.5 inch display)
LCD screen brightness	1000nt
Resolution	1920x1080
General parameters Protection level	Ip42, certain dust-proof and waterproof function
Working temperature	-20℃~70℃
Working humidity	5℃~85℃
Working voltage	AC220V
Power consumption	60W MAX
Size	heights1420mm×width400mm×thickness250mm
Weight	≈25kg

## Model No:TD-PA-XP801



LCD screen size	304mm*152mm(18.5 inch display)
LCD screen brightness	1000nt
Resolution	1920x1080
General parameters Protection level	IP42, certain dust-proof and waterproof function
Working temperature	-20℃~70℃
Working humidity	5℃~85℃
Working voltage	AC220V
Power consumption	60W MAX
Size	heights1400mm×width350mm×thickness200mm
Weight	≈24kg

# License plate recognition series

## Model No:TD-PA-DT101

Fully support the electronic labels in line with ISO18000-6B and EPC CLASS1 G2 standards;

Operating frequency is 902 ~ 928 MHz (it can be adjusted according to the requirements of different countries or regions) ;

Work in wide spectrum frequency hopping (FHSS) or fixed frequency transmission mode;

Output power up to 30 dBm (adjustable);

7 dbi antenna configuration, with a typical read distance of 6~8 m \*;

Support RS232, RS485, Weigen and other user interfaces; provide dynamic connection library (DLL) and demonstration software source code, support secondary development.



Working frequency	UHF(902~928MHz)
RF power	30dbm(Adjustable)
Reading distance	300-500cm(Depending on the label)
Interface	USB
Working voltage	12V
Working temperature	-10~+60℃
Size	235*235*57mm
Weight	≈90g

# Entry and Exit Card Ticket Station

## Model No:TD-PA-QPJ101(Entry)



- Barcode printer for the printing of parking tickets.
- Barcode scanner for the reading of all types of parking tickets.
- Ethernet connection to AI Parking BOX System,
- Capacity of up to 5000 tickets.
- Thermostacally controlled heater with fan.
- Power supply with isola on switch.
- Declarations / Certifications CE, FCC,IC, CNRTLUS.

## Model No:TD-PA-DPJ101(Exit)



- Out Card Credit / In Card Credit Payment for Machine POS tickets parking of types all of reading the for scanner Barcode 2Dboard PC Industrial
- easy allows and maintenance simplied provides platform based PC upgrades system
- fan with heater controlled Thermostatically
- switch isolation with supply Power
- Silver&Black– are colours Standard
- request upon available colors other Any

# Payment Station

## Model No:TD-PA-PS101



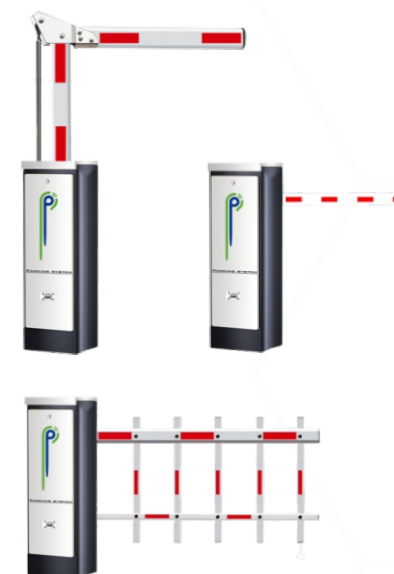
A License Plate Recognition (LPR) self-service payment machine, also known as an LPR pay station or automated payment kiosk, is a technology-driven system used in parking facilities, such as parking garages and lots, to facilitate convenient and automated payment for parking fees using license plate recognition technology.

- Part Name: License Plate Recognition Parking System Auto Payment Station
- Power Supply: 110/220V-50Hz/60Hz- 500VA
- QR Code: Availabe (Option)
- Display Screen: 19 inch
- Working Frequency: 50/60Hz

# Barrier Gates

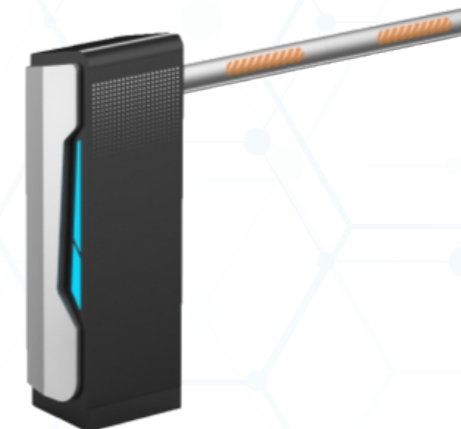
## Model No:TD-PA-DZ108

Voltage:	220V
Environment temperature:	-25°C~+70°C
Environment humidity:	≤90%
Motor rated Power:	100W
Motor rated speed:	1500r/min
Motor protection level:	IP44
Motor insulation level:	F
Reduction ratio:	5: 1
Remote control distance:	50meters(open space)
Motor capacitance:	10-12UF450
Size:	1100mm×345mm×255mm
Weight:	≈40kg



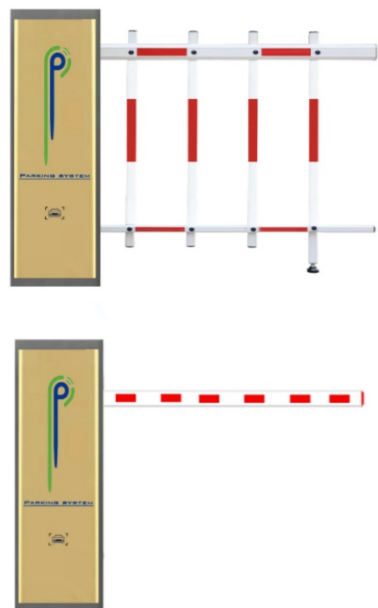
## Model No:TD-PA-DZ201

Voltage:	220V
Environment temperature:	-25°C~+70°C
Environment humidity:	≤90%
Motor rated Power:	100W
Motor rated speed:	1500r/min
Motor protection level:	IP44
Motor insulation level:	F
Reduction ratio:	5: 1
Remote control distance:	50meters(open space)
Motor capacitance:	10-12UF450
Size:	1000mm×325mm×220mm
Weight:	≈35kg



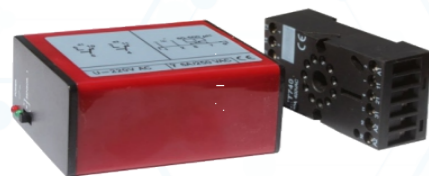
# Barrier Gates

## Model No:TD-PA-DZ103



Voltage:	220VAC±20%/50HZ
Environment temperature:	-25°C~+70°C
Environment humidity:	≤90%
Motor rated Power:	100W
Motor rated speed:	1500r/min
Motor protection level:	IP44
Motor insulation level:	F
Reduction ratio:	5: 1
Remote control distance:	50meters(open space)
Size:	1000mm×300mm×230mm
Weight:	≈35kg

## Model No:TD-PA-JCQ102



Voltage:	AC220V/50Hz,2.5W
Sensitivity:	three levels of adjustable
frequency:	100KHz
Dwell time:	35ms
working temperature:	-40°C~+65°C
Relative humidity:	95%
Storage temperature:	-40°C~+85°C
Maximum coil:	1m X8m
Detection leader:	best within 10 m
Size:	38mmX75mmX115mm

# Barrier Gates

## Model No:TD-PA-DZ204

Voltage:	220V
Environment temperature:	-25°C~+70°C
Environment humidity:	≤90%
Motor rated Power:	180W-250W
Motor rated speed:	1350r/min
Motor protection level:	IP44
Motor insulation level:	F
Reduction ratio:	5: 1
Remote control distance:	50meters(open space)
Size:	1200mm×00mm×320mm
Weight:	≈80kg

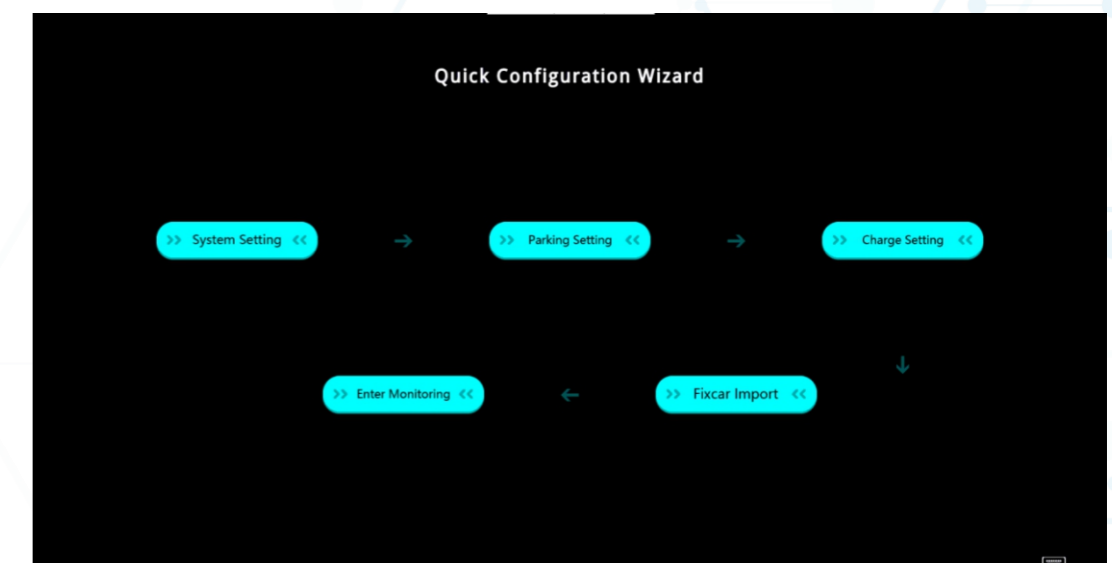
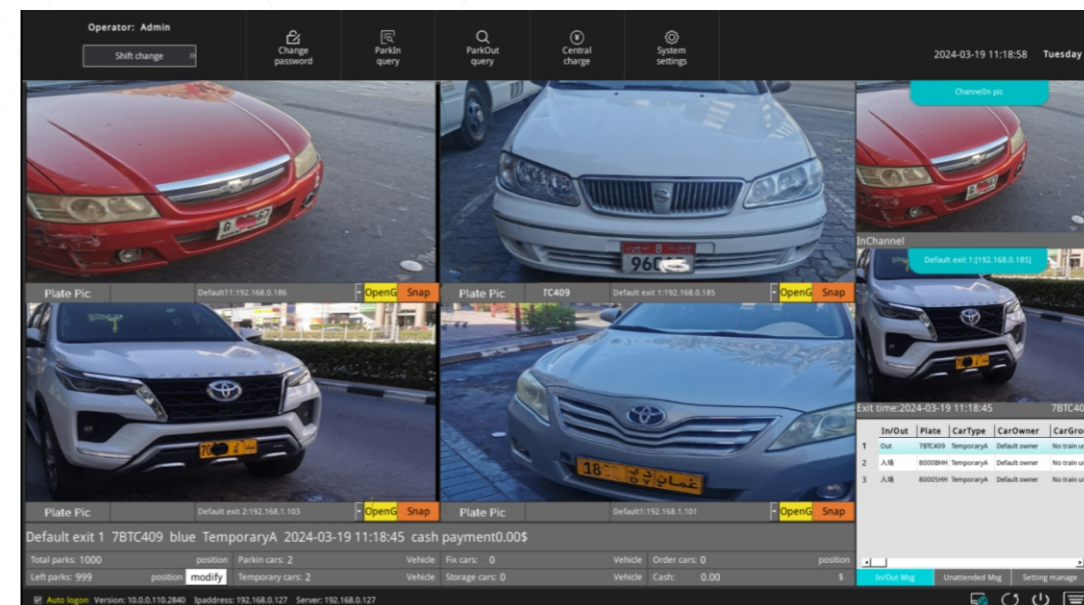


# Software Introduction



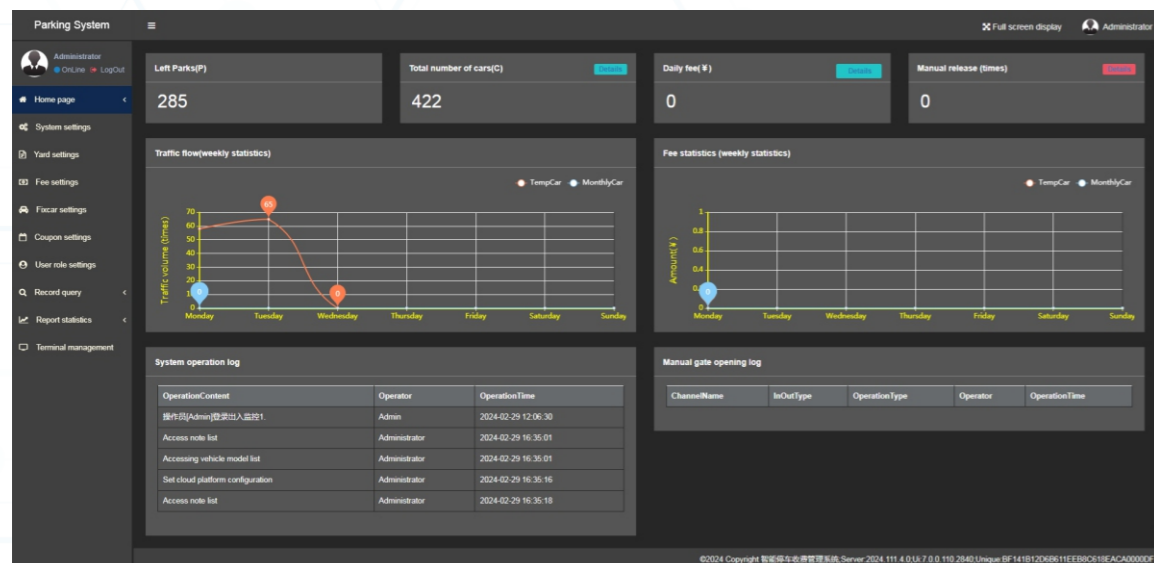
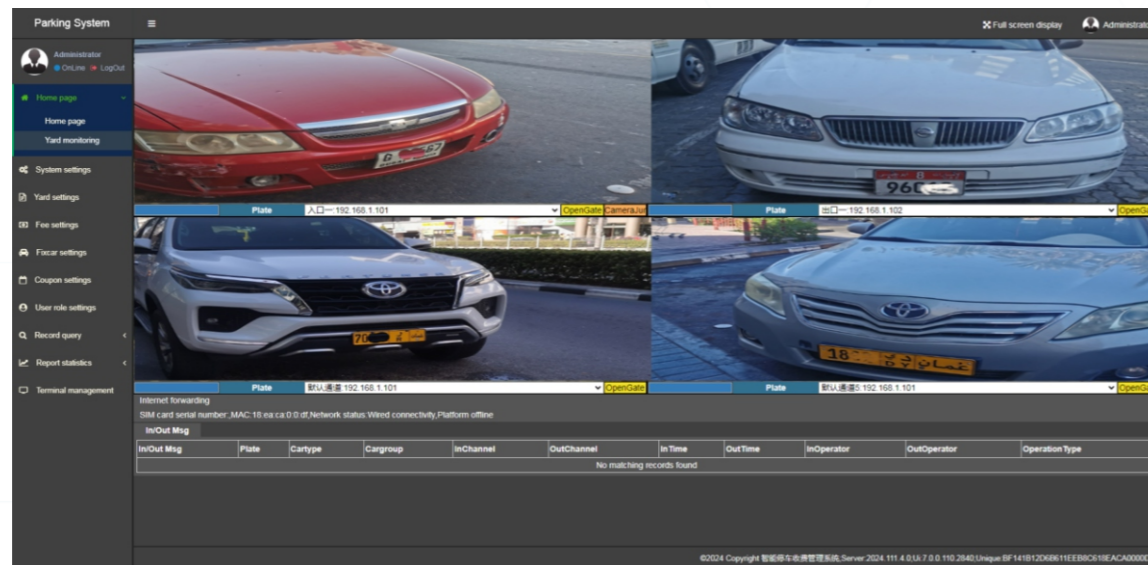
## Software functions introduction:

- 1、Entry and Exit parameter settings
- 2、Customize display words in LED display screen
- 3、Payment rules setting(can customized)
- 4、Authorization setting
- 5、Operator and parking profile
- 6、Registration of vehicle number plate
- 7、Error correction of vehicle number
- 8、Surveillance of software, view of vehicle image, payment information and support
- 9、Manual input vehicle number
- 10、View of vehicle reord and operator record
- 11、View of operator charge report, entry&exit vehicle report and parking fee report



## Remote web functions introduction:

- 1、Can remote parameter setting
- 2、Login interface can be customized
- 3、A lot of query reports are convenient for statistics
- 4、Support central payment on the browser
- 5、Support discounts on the browser
- 6、Can remotely monitor channel videos and view channel details
- 7、Can remotely search for cameras, modify IP addresses, and recognize area configurations
- 8、Can remotely open the barrier gate and close it



# Case Presentation





Accra Parking Lot



West Hanouk Blue Bay Wyndham Hotel Parking Lot



Jinggangshan Airport parking lot



Yichun Airport parking lot



Parking lot of Jincheng City People's Hospital



Parking lot of the Second People's Hospital Affiliated to Zhejiang University School of Medicine



Liaoning Gymnasium parking lot



Changshu Sports Center parking lot



Chang'an Wanda Plaza parking lot



Aura Shopping Center Parking Lot



Tai'an high-speed railway station parking lot



Anyang East high-speed railway station parking lot