

#### MHB MM Series—Medium-size Battery

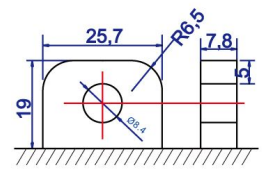
- High performance, completely maintenance-free, low self-discharge
- 100% precise quality testing, stable quality and high reliable performance
- Unique grid alloy formula and updated manufacturing technique
- Floating & standby use: up to 8 years
- Cycle use 1: Up to 260 cycles at 100% DOD
- Cycle use 2: Up to 500 cycles at 50% DOD

#### Application:

- Telecommunications
- Uninterruptable Power Supply (UPS)
- Electric Power System (EPS)
- Emergency backup power supply
- Alarm and security system
- Communication power supply
- DC power supply
- Auto control system

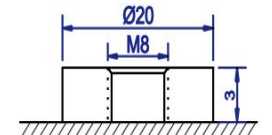
#### Construction:

- Component .....Raw material
- Positive .....Lead dioxide
- Negative .....Lead
- Container .....ABS
- Cover .....ABS
- Sealant .....Epoxy
- Safety valve .... Rubber
- Terminal .....Copper/Pb
- Separator .....Fiber glass
- Electrolyte ..... Sulfuric acid



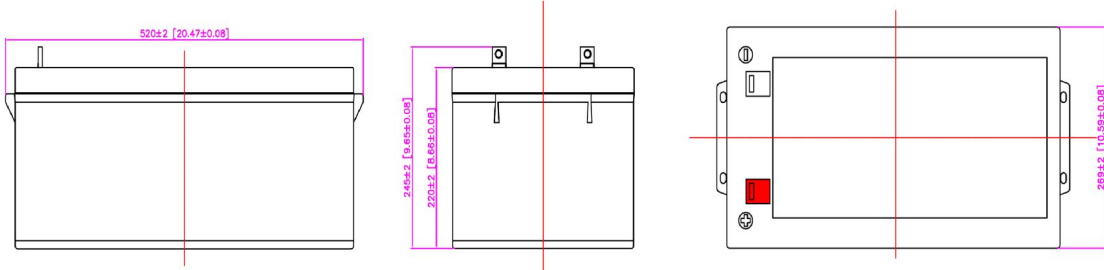
M8 Bolt

T16 Terminal



M8 Bolt

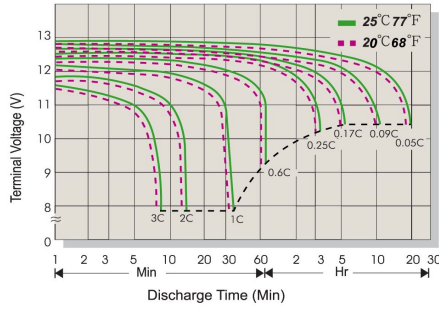
B5 Terminal



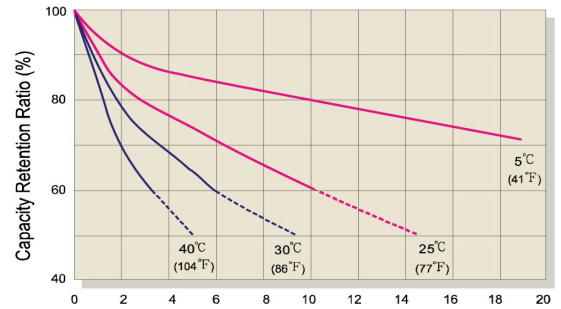
#### Speification:

Battery Model	MM 250-12 12V250AH			
Designed Floating Life	Up to 8 Years			
Capacity (25°C)	20HR(13.090A,10.8V)	10HR(25.000A,10.8V)	5HR(43.830A,10.5V)	1HR(135.510A,10.5V)
	261.80 AH	250.00 AH	219.15 AH	135.51 AH
Dimensions	Length	Width	Height	Total Height
	520 mm	269 mm	220 mm	224 mm
Approx. Weight	69.00 KG ± 3%			
Internal Resistance	Full charged at 25°C: ≤3.80 mΩ			
Self Discharge	2% of capacity declined per month at (25°C)			
Capacity Affected by Temp.(20HR)	40°C	25°C	0°C	-15°C
	102%	100%	85%	65%
Charge Voltage(25oC)	Cycle use			Float use
	14.4-14.6V(-30mV/°C), max. Current:75.0 A			13.5-13.8V (-20mV/°C)

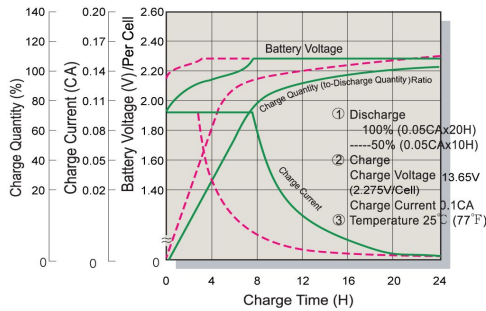
### Terminal Voltage (V) and Discharge Time



### Capacity Retention Characteristic



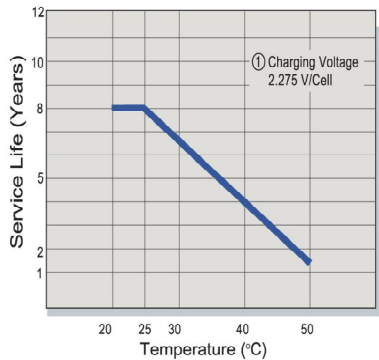
### Battery Voltage and Charge Time for Standby Use



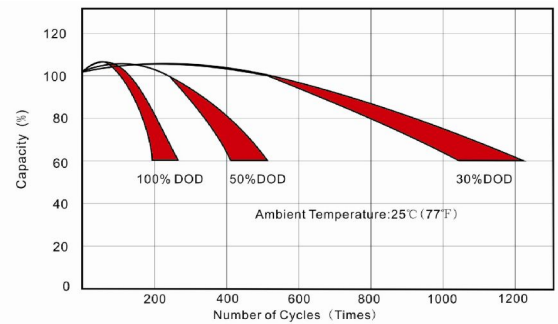
### Battery Voltage and Charge Time for Cycle Use



### Tickle(or Float) Service Life



### Cycle Service Life



### Constant Current Discharge(CC,Unit:A) at 25°C(77°F)

F.V/Time	5Min	10Min	15Min	30Min	1Hr	2Hr	3Hr	4Hr	5Hr	6Hr	10Hr	20Hr
1.80V/Cell	774.2	526.7	360.6	219.30	134.37	83.86	65.20	51.28	43.46	29.04	25.00	13.09
1.75V/Cell	780.8	531.1	363.7	221.16	135.51	84.57	65.75	51.71	43.83	29.28	25.38	13.29
1.70V/Cell	800.3	544.4	372.8	226.69	138.90	86.68	67.39	53.00	44.93	30.02	25.75	13.48
1.67V/Cell	819.8	557.7	381.9	232.22	142.29	88.80	69.04	54.30	46.02	30.75	26.13	13.68
1.60V/Cell	856.3	582.5	398.9	242.56	148.62	92.75	72.11	56.72	48.07	32.12	26.50	13.87

### Constant Power Discharge (CP,Unit:W) at 25°C(77°F)

F.V/Time	5Min	10Min	15Min	30Min	1Hr	2Hr	3Hr	4Hr	5Hr	6Hr	10Hr	20Hr
1.80V/Cell	1510	1027	703	427.6	262.0	163.53	127.13	99.99	84.76	56.63	48.75	25.52
1.75V/Cell	1522	1036	709	431.3	264.2	164.91	128.21	100.84	85.47	57.11	49.48	25.91
1.70V/Cell	1561	1062	727	442.0	270.9	169.03	131.42	103.36	87.61	58.53	50.21	26.29
1.67V/Cell	1599	1088	745	452.8	277.5	173.16	134.62	105.88	89.75	59.96	50.94	26.67
1.60V/Cell	1670	1136	778	473.0	289.8	180.87	140.62	110.59	93.74	62.63	51.68	27.05