

#### MHB MM Series—Medium-size Battery

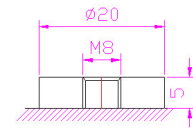
- High performance, completely maintenance-free, low self-discharge
- 100% precise quality testing, stable quality and high reliable performance
- Unique grid alloy formula and updated manufacturing technique
- Floating & standby use: up to 8 years
- Cycle use 1: Up to 260 cycles at 100% DOD
- Cycle use 2: Up to 500 cycles at 50% DOD

#### Application:

- Telecommunications
- Uninterruptable Power Supply (UPS)
- Electric Power System (EPS)
- Emergency backup power supply
- Alarm and security system
- Communication power supply
- DC power supply
- Auto control system

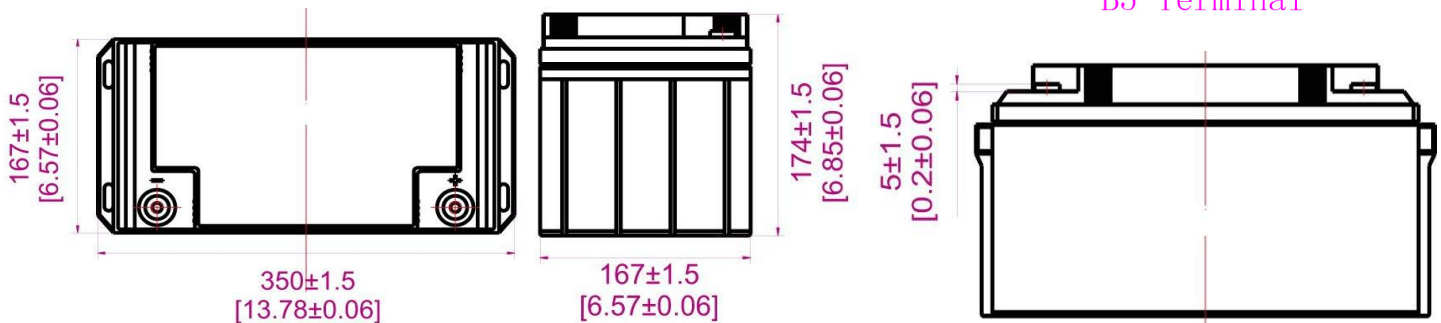
#### Construction:

- Component..... Raw material
- Positive..... Lead dioxide
- Negative..... Lead
- Container..... ABS
- Cover..... ABS
- Sealant..... Epoxy
- Safety valve..... Rubber
- Terminal..... Copper
- Separator..... Fiber glass
- Electrolyte..... Sulfuric acid



M8 Bolt

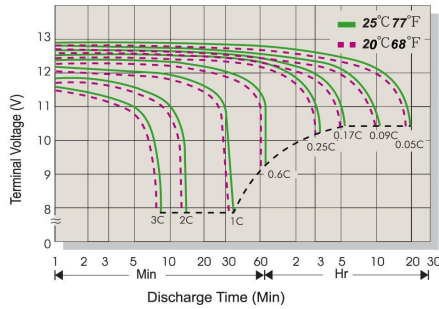
B5 Terminal



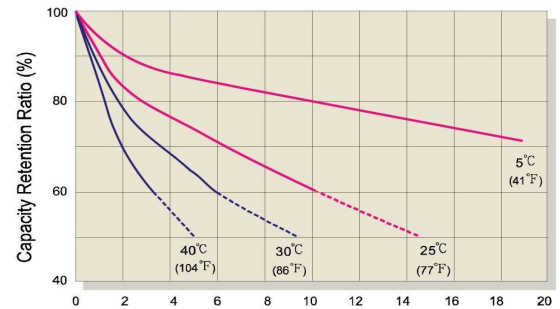
#### Speification:

Battery Model	MM 65-12 12V65AH			
Designed Floating Life	Up to 8 Years			
Capacity (25°C)	20HR(3.400A, 10.8V)	10HR(6.500A, 10.8V)	5HR(11.400A, 10.5V)	1HR(35.230A, 10.5V)
	68.00 AH	65.00 AH	57.00 AH	35.23 AH
Dimensions	Length	Width	Height	Total Height
	350 mm	167 mm	174 mm	174 mm
Approx. Weight	20.00Kg ±3%			
Internal Resistance	Full charged at 25°C: ≤9.00 mΩ			
Self Discharge	2% of capacity declined per month at (25°C)			
Capacity Affected by Temp.(20HR)	40°C	25°C	0°C	-15°C
	102%	100%	85%	65%
Charge Voltage(25°C)	Cycle use		Float use	
	14.40-15.00V(-30mV/°C), max. Current:18.00A		13.50-13.80V (-20mV/°C)	

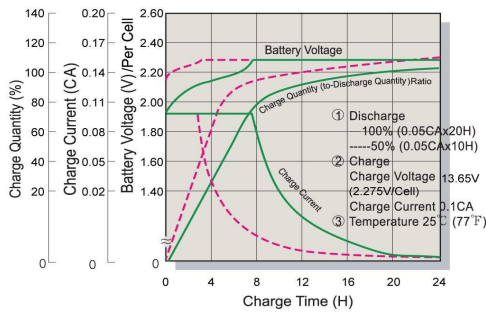
### Terminal Voltage (V) and Discharge Time



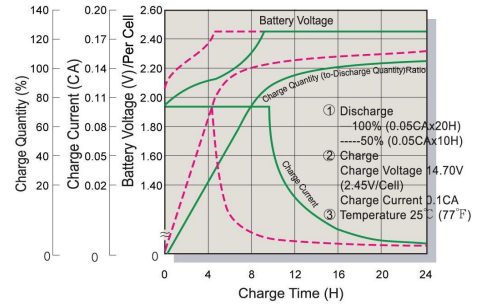
### Capacity Retention Characteristic



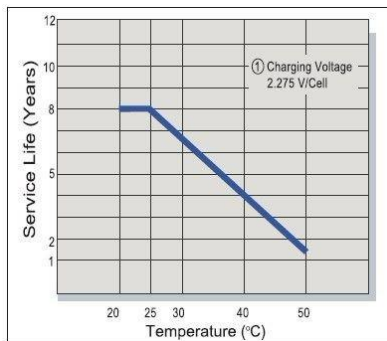
### Battery Voltage and Charge Time for Standby Use



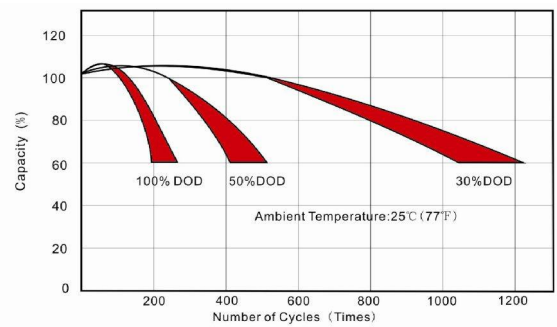
### Battery Voltage and Charge Time for Cycle Use



### Tickle(or Float) Service Life



### Cycle Service Life



### Constant Current Discharge (CC, Unit: A) at 25°C (77°F)

F.V/Time	5Min	10Min	15Min	30Min	1Hr	2Hr	3Hr	4Hr	5Hr	6Hr	10Hr	20Hr
1.80V/Cell	201.3	136.94	93.76	57.02	34.94	21.80	16.95	13.33	11.30	7.55	6.50	3.40
1.75V/Cell	203.0	138.10	94.55	57.50	35.23	21.99	17.09	13.45	11.40	7.61	6.60	3.45
1.70V/Cell	208.1	141.55	96.92	58.94	36.11	22.54	17.52	13.78	11.68	7.80	6.70	3.51
1.67V/Cell	213.1	145.00	99.28	60.38	36.99	23.09	17.95	14.12	11.97	7.99	6.79	3.56
1.60V/Cell	222.6	151.46	103.70	63.07	38.64	24.12	18.75	14.75	12.50	8.35	6.89	3.61

### Constant Power Discharge (CP, Unit: W) at 25°C (77°F)

F.V/Time	5Min	10Min	15Min	30Min	1Hr	2Hr	3Hr	4Hr	5Hr	6Hr	10Hr	20Hr
1.80V/Cell	392.5	267.0	182.8	111.19	68.13	42.52	33.05	26.00	22.04	14.72	12.68	6.64
1.75V/Cell	395.8	269.3	184.4	112.13	68.70	42.88	33.33	26.22	22.22	14.85	12.87	6.74
1.70V/Cell	405.7	276.0	189.0	114.93	70.42	43.95	34.17	26.87	22.78	15.22	13.06	6.84
1.67V/Cell	415.6	282.8	193.6	117.74	72.14	45.02	35.00	27.53	23.33	15.59	13.25	6.93
1.60V/Cell	434.1	295.3	202.2	122.98	75.35	47.03	36.56	28.75	24.37	16.28	13.44	7.03