



MHB POWER THE INDUSTRY BATTERY WAY.

## HIGH-RATE INDUSTRIAL BATTERIES

MHB HR Series high-rate sealed maintenance-free lead-acid battery uses high-purity electrolytic lead to ensure excellent charge-discharge performance and low self-discharge, making it ideal for long-term storage. With advanced structural design, it delivers outstanding high-rate discharge performance. The fully sealed, maintenance-free design requires no electrolyte refilling during use.



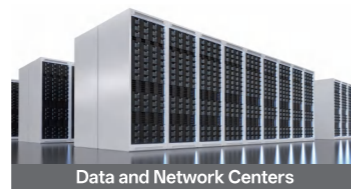
Nominal Rate(25°C): 24W/Cell — 2000W/Cell Voltage: 2 — 12 Volts



UPS



Emergency Power Supply



Data and Network Centers



Industrial Controls

### GENERAL FEATURES

- 6-12 years design life(25°C)
- Advanced AGM technology for superior high-rate power
- Excellent high current performance-optimised for short discharge time
- Epoxy-sealed posts eliminate leaks
- Optimal energy density - saves floor space
- Long Life Alloy - minimizing grid growth, reducing gassing, and extending battery life

### STANDARDS

- Compliance with IEC 60896 standards
- Classified as "General Purpose" according to Eurobat
- IATF 16949 ISO 45001.ISO 9001 and ISO 14001 certified production facilities
- CE,UL Approved



\*Data above is recommended and the picture is only for battery effect display MHB reserve the final right of explanation



FUJIAN MINHUA POWER SOURCE CO.,LTD.  
Longqiao Industrial Park, Anxi Economic Development Zone,Fujian Provinc,China

WWW.MINHUAGROUP.COM



# HIGH-RATE+ INDUSTRIAL BATTERIES



SINCE 1992

**HR SERIES** Ultra High-Rate VRLA Battery

**PRODUCT MODEL**

Model	Volt	AH (10HR)/1.8V	1.67V Nominal Rate (25°C)	L	W	H	TH	Weight(KG)	Polarity	Terminal
HR1224W	12	6.6	24W/cell/15Min	151	65	94	100	2.14	+ -	F1/F2
HR1224W	12	5.3	24W/cell/15Min	90	70	101	107	1.89	+ -	F1/F2
HR1226W	12	6.6	26W/cell/15Min	151	65	94	100	2.18	+ -	F1/F2
HR1226W	12	6.5	26W/cell/15Min	151	65	94	100	2.09	+ -	F1/F2
HR1228W	12	7.0	28W/cell/15Min	151	65	94	100	2.25	+ -	F1/F2
HR1230W	12	7	30W/cell/15Min	151	65	94	100	2.39	+ -	F1/F2
HR1232W	12	7.5	32W/cell/15Min	151	65	94	100	2.32	+ -	F1/F2
HR1234W	12	7.5	34W/cell/15Min	151	65	94	100	2.36	+ -	F1/F2
HR1235W	12	7.8	35W/cell/15Min	151	65	94	100	2.51	+ -	F1/F2
HR1236W	12	8.5	36W/cell/15Min	151	65	94	100	2.47	+ -	F1/F2
HR1236W	12	7.5	36W/cell/15Min	151	65	94	100	2.71	+ -	F2
HR1242W	12	8.5	42W/cell/15Min	151	65	95	101	2.84	+ -	F1/F2
HR1255W	12	13	55W/cell/15Min	151	98	95	101	3.79	+ -	F1/F2
HR1285W	12	18.6	85W/cell/15Min	181	77	167	167	6.1	- +	B2(M5)
HR12120W	12	38	120W/cell/15Min	197	165	170	170	11.7	- +	B4
HR12160W	12	45	160W/cell/15Min	197	165	170	170	14.3	- +	B4
HR12185W	12	55	185W/cell/15Min	229	138	205	211	16.3	+ -	B4
HR12215W	12	65	215W/cell/15Min	348	167	178	178	19.3	+ -	B4
HR12255W	12	70	255W/cell/15Min	348	167	178	178	21.5	+ -	B4
HR12300W	12	75	300W/cell/15Min	256	173	213	216	23.8	+ -	B5
HR12330W	12	80	330W/cell/15Min	293	173	213	216	26.8	+ -	B5
HR12350W	12	85	350W/cell/15Min	293	173	213	216	27.5	+ -	B5
HR12360W	12	100	360W/cell/15Min	330	173	213	216	30.1	+ -	B5
HR12370W	12	100	370W/cell/15Min	330	173	212	220	30.8	+ -	B5
HR12400W	12	100	400W/cell/15Min	330	173	213	216	31.3	+ -	B5
HR12430W	12	100	430W/cell/15Min	330	173	213	216	32.1	+ -	B5
HR12460W	12	120	460W/cell/15Min	408	177	225	225	37.6	+ -	B5

Model	Volt	AH (10HR)/1.8V	1.67V Nominal Rate (25°C)	L	W	H	TH	Weight(KG)	Polarity	Terminal
HR12480W	12	115	480W/cell/15Min	379	174	214	217	40.6	- +	B5
HR12510W	12	140	510W/cell/15Min	483	170	238	239	43.7	+ -	B5
HR12560W	12	145	560W/cell/15Min	483	170	238	239	46.6	+ -	B5
HR12605W	12	170	605W/cell/15Min	532	207	214	220	55.0	- +	B5
HR12650W	12	170	650W/cell/16Min	532	207	214	220	55.6	- +	B5
HR12700W	12	180	700W/cell/15Min	532	207	214	220	57.6	- +	B5
HR12705W	12	190	705W/cell/15Min	532	207	214	220	59.1	- +	B5
HR12750W	12	185	750W/cell/15Min	532	207	214	220	59.6	- +	B5
HR12800W	12	210	800W/cell/15Min	522	240	218	224	67.2	- +	B5
HR12820W	12	215	820W/cell/15Min	522	240	218	224	69.2	- +	B5
HR12845W	12	225	845W/cell/15Min	496	259	227	233	74.6	- +	B5
HR12890W	12	235	890W/cell/15Min	496	259	227	233	77.2	- +	B5
HR12950W	12	230	950W/cell/15Min	521	268	220	226	77.6	- +	B5
HR121000W	12	250	1000W/cell/15Min	521	268	220	226	79.6	- +	B5
HR12390FT	12	95	390W/cell/15Min	508	110	235	235	34.1	- +	B4(M8)
HR12550FT	12	140	550W/cell/15Min	551	110	288	288	48	- +	B4(M8)
HR12600FT	12	150	600W/cell/15Min	550	125	281	281	51.6	- +	B5
HR12700FT	12	180	700W/cell/15Min	560	125	318	318	60.1	- +	B5
HR12750FT	12	190	750W/cell/15Min	560	125	318	318	64.2	- +	B5
HR12800FT	12	210	800W/cell/15Min	541	154	322	322	75.6	- +	B6
HR12900FT	12	225	900W/cell/15Min	541	154	322	322	80.2	- +	B6
HR121000FT	12	240	1000W/cell/15Min	541	154	322	322	84.6	- +	B6
HR500W	2	170	500W/cell/15Min	85	172	353	364	10.6	+ -	B5
HR750W	2	250	750W/cell/15Min	102	176	338	349	13.9	+ -	B5
HR1000W	2	340	1000W/cell/15Min	145	176	338	349	19.1	+ -	B5
HR1200W	2	410	1200W/cell/15Min	185	176	338	349	23.2	+ -	B6
HR1500W	2	510	1500W/cell/15Min	225	176	338	349	29.1	+ -	B6
HR2000W	2	680	2000W/cell/15Min	266	176	338	349	36.6	+ -	B6