

# 3 Port Solenoid Valve

## Direct Operated Poppet Type

# VT307 Series

### Rubber Seal



Note) CE/UKCA compliant: Electrical entry is applicable only for the DIN terminal.



### How to Order

V T 307 [ ] [ ] - 5 G [ ] 1 - 01 [ ] - F - [ ]

#### Body type

T	Body ported
O	For manifold

#### Valve option

Nil	Standard type
E*	Continuous duty type
Y*	Energy-saving type
V*	Vacuum specification type
W*	Energy-saving type, Vacuum specification type

\* Semi-standard

#### Pressure specifications

Nil	Standard type (0.7 MPa)
K*	High-pressure type (1 MPa)

\* Semi-standard

#### Rated voltage

Rated voltage	Valve option					
	Nil	E	Y	V	W	
1	100 VAC, 50/60 Hz	●	●	—	●	—
2	200 VAC, 50/60 Hz	●	●	—	●	—
3*	110 VAC, 50/60 Hz	●	—	—	—	—
4*	220 VAC, 50/60 Hz	●	●	—	●	—
5	24 VDC	●	●	●	●	●
6*	12 DCV	●	●	●	●	●
7*	240 VAC, 50/60 Hz	●	●	—	—	—

\* Semi-standard

#### Electrical entry

	Grommet	DIN terminal
<b>G:</b> 300 mm lead wire <b>H:</b> 600 mm lead wire		
<b>D:</b> With connector		
<b>DO:</b> Without connector		
CE/UKCA-compliant	—	●
AC	—	●

#### CE/UKCA-compliant

Nil	None
Q	CE/UKCA-compliant*

\* Electrical entry and light/surge voltage suppressor: D/DO/DZ/DOZ only

#### Bracket

Nil	None
F	With bracket

#### Thread type

Nil	Rc
F	G
N	NPT
T	NPTF

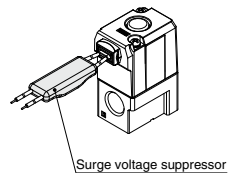
#### Port size

Nil	Without port (For manifold)
01	1/8 (6A)
02	1/4 (8A)

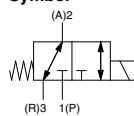
#### Light/Surge voltage suppressor

Nil	None
S	With surge voltage suppressor (Grommet type only)
Z	With light/surge voltage suppressor (DIN terminal type only)

#### With surge voltage suppressor



#### Symbol



#### Manifold

Model	Applicable manifold type	Accessories
VO307□(-Q)	Common or individual exhaust	Function plate (DXT152-14-1A) <sup>Note)</sup> Mounting screw (NXT013-3)

Note) It is not applicable to the continuous duty type. Refer to the accessories on page 1247.

#### Option

Description	Part no.
Bracket	DXT152-25-1A (With screw)

Note) A gasket must be ordered separately for DO. Refer to page 1245 for gasket part numbers.