

# In-line Type Vacuum Ejector

# ZU□A Series

RoHS

## How to Order

ZU05SA□

• Nozzle diameter

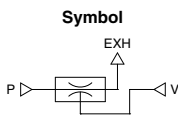
|    |        |
|----|--------|
| 03 | 0.3 mm |
| 04 | 0.4 mm |
| 05 | 0.5 mm |
| 07 | 0.7 mm |

• Port size

| Symbol | Port size            | ZU03/04 | ZU05/07 |
|--------|----------------------|---------|---------|
| Nil    | ø4 One-touch fitting | ●       | —       |
|        | ø6 One-touch fitting | —       | ●       |
| 01     | Rc1/8 female thread  | —       | ●       |
| N      | ø5/32"               | ●       | —       |

• Ultimate vacuum pressure

| Symbol | Ultimate vacuum pressure      | ZU03/04 | ZU05/07 |
|--------|-------------------------------|---------|---------|
| S      | -85 kPa (ZU03)/-87 kPa (ZU04) | ●       | —       |
|        | -90 kPa                       | —       | ●       |
|        | -40 kPa                       | ●       | —       |
| L      | -40 kPa                       | ●       | —       |
|        | -48 kPa                       | —       | ●       |



## Specifications

|                             |   |          |
|-----------------------------|---|----------|
| Operating temperature range | -5 to 50°C (No freezing)                  |          |
| Fluid                       | Air                                       |          |
| Applicable tubing material  | FEP, PFA, Nylon, Soft nylon, Polyurethane |          |
| Operating pressure range    | 0.1 to 0.6 MPa                            |          |
| Standard supply pressure    | ZU03/04                                   | 0.35 MPa |
|                             | ZU05/07                                   | 0.45 MPa |

## Ejector Specifications<sup>1</sup>

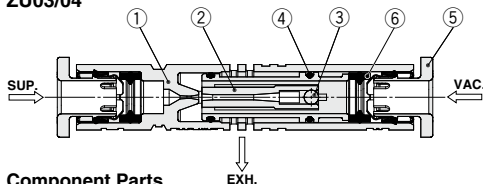
| Model  | Nozzle diameter [mm] | Ultimate vacuum pressure*2 [kPa] |        | Maximum suction flow rate*2 [L/min (ANR)] |        | Air consumption*2 [L/min (ANR)] | Weight [g]           |                     |
|--------|----------------------|----------------------------------|--------|---|--------|---------------------------------|----------------------|---------------------|
|        |                      | Type S                           | Type L | Type S                                    | Type L |                                 | One-touch connection | Screw-in connection |
| ZU03□A | 0.3                  | -85                              | —      | 1.8                                       | 3.4    | 4.2                             | —                    | —                   |
| ZU04□A | 0.4                  | -87                              | -40    | 3.2                                       | 5.8    | 7.7                             | 2.4                  | —                   |
| ZU05□A | 0.5                  | —                                | —      | 7   | 13     | 14                              | 3.9                  | 18.6                |
| ZU07□A | 0.7                  | -90                              | -48    | 11  | 16     | 28                              | 4.3                  | 19.1                |

\*1 The values indicating characteristics are representative values, and may vary depending on the atmospheric pressure (weather, altitude, etc.) and measurement method.

\*2 Standard supply pressure

## Construction

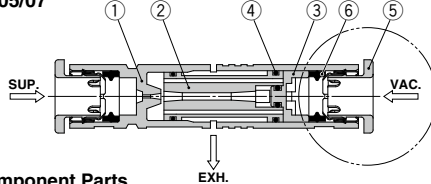
ZU03/04



### Component Parts

| No. | Description | Material        | Note           |
|-----|-------------|-----------------|----------------|
| 1   | Body        | Resin           |                |
| 2   | Diffuser    | Resin           |                |
| 3   | Steel ball  | Stainless steel |                |
| 4   | O-ring      | NBR             | Grease applied |
| 5   | Cassette    | —               |                |
| 6   | Seal        | NBR             | Grease applied |

ZU05/07



### Component Parts

| No. | Description   | Material | Note                       |
|-----|---------------|----------|----------------------------|
| 1   | Body          | Resin    |                            |
| 2   | Diffuser      | Resin    |                            |
| 3   | Cap           | Resin    |                            |
| 4   | O-ring        | NBR      | Grease applied             |
| 5   | Cassette      | —        |                            |
| 6   | Seal          | NBR      | Grease applied             |
| 7   | Screw-in stud | Brass    | Electroless nickel plating |

