

# Compressed Air Preparation Filter

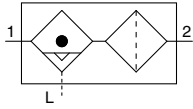
Line Filter/Mist Separator/Micro Mist Separator

## AFF/AM/AMD Series

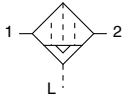


Symbol

Line Filter



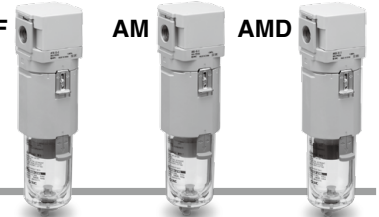
Mist Separator  
Micro Mist Separator



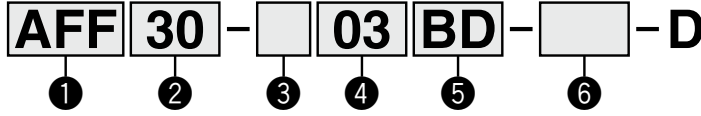
AFF

AM

AMD



### How to Order



· Option/Semi-standard: Select one each for a to g.  
· Option/Semi-standard symbol: When more than one specification is required, indicate in alphanumeric order.  
Example) AM30-N03BD-6RZ-D

	Symbol	Description	② Body size					
			20	30	40	50	60	
① Filter type	AFF	Nominal filtration rating: 1 μm Water droplet removal ratio: 99%	●	●	●	●	●	
	AM	Nominal filtration rating: 0.1 μm Oil mist concentration on the outlet side: 1 mg/m <sup>3</sup>	●	●	●	●	●	
	AMD	Nominal filtration rating: 0.01 μm Oil mist concentration on the outlet side: 0.1 mg/m <sup>3</sup>	●	●	●	●	●	
③ Thread type	+							
	Nil	Rc	●	●	●	●	●	
	N* <sup>1</sup>	NPT	●	●	●	●	●	
④ Port size	+							
	01	1/8	●	—	—	—	—	
	02	1/4	●	●	●	—	—	
	03	3/8	—	●	●	—	—	
	04	1/2	—	—	●	—	—	
	06	3/4	—	—	—	●	—	
⑤ Option	+							
	a Mounting	Nil Without mounting option B* <sup>3</sup> With bracket	●	●	●	●	●	
	b Float type auto drain	Nil Without auto drain C* <sup>4</sup> N.C. (Normally closed) D* <sup>5</sup> N.O. (Normally open)	●	●	●	●	●	
⑥ Semi-standard	+							
	c Bowl* <sup>6</sup>	Nil	Polycarbonate bowl	●	●	●	—	—
		2	Stainless steel bowl	—	—	—	●	●
		6	Metal bowl	●	●	●	—	—
		8	Nylon bowl	●	●	●	—	—
		8	Metal bowl with level gauge	—	●	●	—	—
		6C	With bowl guard (Nylon bowl)	●	—* <sup>7</sup>	—* <sup>7</sup>	—	—
	d Drain port* <sup>9</sup>	Nil	With drain cock	●	●	●	●	●
		J* <sup>10</sup>	Drain guide 1/8	●	—	—	—	—
		W* <sup>11</sup>	Drain cock, Barb fitting (ø6)	—	●	●	●	●
	e Indicator* <sup>12</sup>	+						
		Nil	Without indicator	●	●	●	●	●
L* <sup>13</sup>		With element service indicator	●	●	●	●	●	
M* <sup>14</sup>		With clogging switch (1 point)	●	●	●	●	●	
f Flow direction	+							
	Nil	Flow direction: Left to right	●	●	●	●	●	
g Unit	+							
	R	Flow direction: Right to left	●	●	●	●	●	
	+							
	Nil	Name plate and caution plate for bowl in SI units: MPa, °C	●	●	●	●	●	
	Z* <sup>15</sup>	Name plate and caution plate for bowl in imperial units: psi, °F	○* <sup>16</sup>	○* <sup>16</sup>	○* <sup>16</sup>	○* <sup>16</sup>	○* <sup>16</sup>	

\*1 The drain guide is either NPT1/8 (applicable to the AFF20, AM20, and AMD20) or NPT1/4 (applicable to the AFF60, AM30 to AM60, and AMD30 to AMD60). The auto drain port comes with a ø3/8" One-touch fitting (applicable to the AFF30 to AFF60, AM30 to AM60, and AMD30 to AMD60).  
\*2 The drain guide is either G1/8 (applicable to the AFF20, AM20, and AMD20) or G1/4 (applicable to the AFF30 to AFF60, AM30 to AM60, and AMD30 to AMD60).  
\*3 A bracket is not assembled and supplied loose at the time of shipment. Including 2 mounting screws.  
\*4 When pressure is not applied, condensate which does not start the auto drain mechanism will be left in the bowl. Releasing the residual condensate before ending operations for the day is recommended.  
\*5 If the compressor is small (0.75 kW, discharge flow is less than 100 L/min (ANR)), air leakage from the drain cock may occur during the start of operations. The N.C. type is recommended.  
\*6 Refer to the chemical data on page 32 for chemical resistance of the bowl.

\*7 A bowl guard is provided as standard equipment (polycarbonate).  
\*8 A bowl guard is provided as standard equipment (nylon).  
\*9 The combination of float type auto drain C and D is not available.  
\*10 Without a valve function. The mounting screws are the same as the thread of ③.  
\*11 The combination of metal bowl 2 and 8 is not available.  
\*12 After purchase, option "Nil" (Without indicator) cannot be changed to option "L" (With element service indicator), "M," or "MM" (With clogging switch).  
\*13 An auto switch cannot be installed with this option.  
\*14 This option is equipped with a reed auto switch (model: D-A93VL). Contact SMC for other compatible models. Refer to page 30 for the auto switch specifications.  
\*15 For pipe thread type: NPT  
This product is for overseas use only according to the new Measurement Act. (The SI unit type is provided for use in Japan.)  
\*16 ○: For pipe thread type: NPT only

AFF/AM/AMD

AMK

Modular Connection Example

Accessories Sold Separately

Auto Switch

International Standard

Specific Product Precautions

# Compressed Air Preparation Filter

Activated Carbon Filter

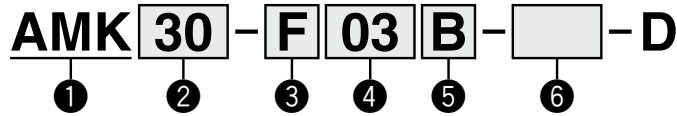
## AMK Series



### Symbol



### How to Order



· Option/Semi-standard: Select one each for a to d.  
 · Option/Semi-standard symbol: When more than one specification is required, indicate in alphanumeric order.  
 Example) AMK30-N03B-6RZ-D

	Symbol	Description	②					
			Body size					
			20	30	40	50	60	
①	Filter type	<b>AMK</b> Activated carbon filter	●	●	●	●	●	
		+						
③	Thread type	<b>Nil</b> Rc	●	●	●	●	●	
		<b>N</b> NPT	●	●	●	●	●	
		<b>F</b> G	●	●	●	●	●	
		+						
④	Port size	<b>01</b> 1/8	●	—	—	—	—	
		<b>02</b> 1/4	●	●	●	—	—	
		<b>03</b> 3/8	—	●	●	—	—	
		<b>04</b> 1/2	—	—	●	—	—	
		<b>06</b> 3/4	—	—	—	●	—	
		<b>10</b> 1	—	—	—	●	●	
		+						
⑤	Option a	Mounting	<b>Nil</b> Without mounting option	●	●	●	●	●
			<b>B*1</b> With bracket	●	●	●	●	●
		+						
⑥	Semi-standard b	Bowl*2	<b>Nil</b> Polycarbonate bowl	●	●	●	—	—
			Stainless steel bowl	—	—	—	●	●
			<b>2</b> Metal bowl	●	●	●	—	—
			<b>6</b> Nylon bowl	●	●	●	—	—
			<b>C</b> With bowl guard	●	—*3	—*3	—	—
			<b>6C</b> With bowl guard (Nylon bowl)	●	—*4	—*4	—	—
			+					
	c	Flow direction	<b>Nil</b> Flow direction: Left to right	●	●	●	●	●
			<b>R</b> Flow direction: Right to left	●	●	●	●	●
			+					
d	Pressure unit	<b>Nil</b> Name plate and caution plate in SI units: MPa/°C	●	●	●	●	●	
		<b>Z*5</b> Name plate and caution plate in imperial units: psi/°F	○*6	○*6	○*6	○*6	○*6	

\*1 A bracket is not assembled and supplied loose at the time of shipment. Including 2 mounting screws.

\*2 Refer to the chemical data on page 32 for chemical resistance of the bowl.

\*3 A bowl guard is provided as standard equipment (polycarbonate).

\*4 A bowl guard is provided as standard equipment (nylon).

\*5 For pipe thread type: NPT

This product is for overseas use only according to the new Measurement Act. (The SI unit type is provided for use in Japan.)

\*6 ○: For pipe thread type: NPT only

AFF/AM/AMD

AMK

Modular Connection Example

Accessories Sold Separately

Auto Switch

International Standard

Specific Product Precautions