

# Energy Saving, Exhaust-Recovery Booster Regulator

## VBAE Series

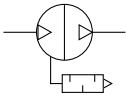
### Size 10, 20

RoHS

#### How to Order

VBAE 20 - 04 -

#### Symbol



#### Body size

Symbol	Body size
10	1/4
20	3/8

#### Thread type\*1

Symbol	Thread type
Nil	Rc
F	G
N	NPT

#### Port size

Symbol	Port size	Applicable model
02	1/4	VBAE10
04	1/2	VBAE20

#### Semi-standard

Symbol	Semi-standard
Nil	Standard product
Z*4	Pressure unit on the product name label: psi Pressure unit on the pressure gauge : MPa and psi

#### Option\*5

	Symbol	Description	Body size	
			10	20
a	Bolt	Nil	●	●
		B	—*2	●*3
b	Regulator	Nil	●	●
		D	●	●
		E	●	●
c	Pressure gauge	Nil	●	●
		G	●	●

\* Select one item for "a," "b," and "c."

- \*1 Thread types apply to the IN and OUT ports. The gauge ports are Rc thread type regardless of the thread type indication.
- \*2 When mounting a booster regulator to an air tank, use the included tank mounting bolt.
- \*3 Be sure to use the dedicated air tank mounting bolt (option "B", M10 x 1.5 x 25: 4 pcs) when mounting to an air tank. (The length varies from that of the included tank mounting bolt.)
- \*4 For the pipe thread type: NPT  
This product is for overseas use only according to the New Measurement Act. (The SI unit type is provided for use in Japan.)
- \*5 Options are shipped together with the product.

#### Standard Specifications

Model	VBAE10	VBAE20
Fluid	Compressed air	
Pressure increase ratio	1.7 times (Fixed)	
Max. flow rate*1 [L/min (ANR)]	230	1000
Outlet pressure range [MPa]	0.3 to 1.2	
Inlet pressure range [MPa]	0.2 to 0.7	
Proof pressure [MPa]	1.8	
Port size (IN, OUT) [Rc]	1/4	1/2
OUT side gauge port [Rc]	1/8	
Tank connection port (with plug)*2	1/4	1/2
Ambient and fluid temperatures [°C]	2 to 50 (No freezing)	
Installation	Horizontal, Vertical	
Lubrication	Grease (Non-lube)	
Weight [kg]	1.2	5.0

- \*1 Flow rate at IN = OUT = 0.5 MPa. The pressure varies depending on the operating conditions. Refer to "Flow Rate Characteristics" on page 6.
- \*2 The tank connection port cannot be used for applications other than the connection with VBAT.

#### Air Tank Compatibility Chart

Booster regulator	VBAE10	VBAE20
Air tank		
VBAT05A(1)	●	—
VBAT05S(1)	●	—
VBAT10A(1)	●	●
VBAT10S(1)	●	●
VBAT20A(1)	—	●
VBAT20S(1)	—	●
VBAT38A(1)	—	●
VBAT38S(1)	—	●

- \* Be sure to confirm the operating pressure range of the air tank.  
For details on air tanks, refer to the **Web Catalog**.



Air tank details