



# D660

## Small Character Inkjet Printer

Dot Matrix Inkjet | Efficient, Stable,  
More Economical on Consumables

HIGH-SPEED SMALL CHARACTER PRINTER

FULL-AUTOMATIC INKJET PRINTER





360°  
Free Marking



Clear Printing



Stainless  
Steel Material



Industrial  
Multiple Interfaces



Visualization  
Panel



Black, White, Yellow  
Inks Available

# 360° Rotatable Printhead for Free Printing

The nozzle utilizes a structure that directly seals the nozzle orifice, effectively preventing ink leakage.

Printable Lines

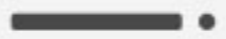
1~5 Lines

Single Line  
Character Height

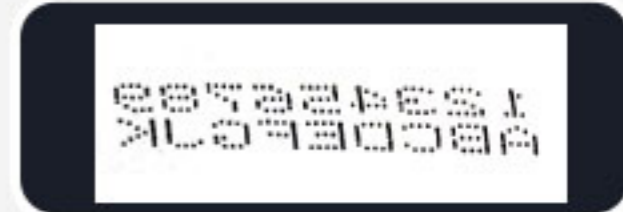
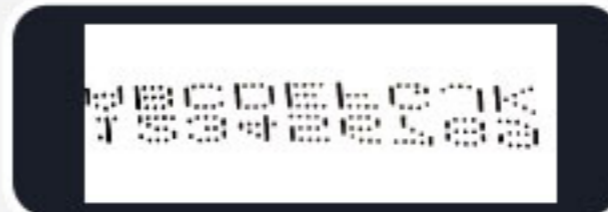
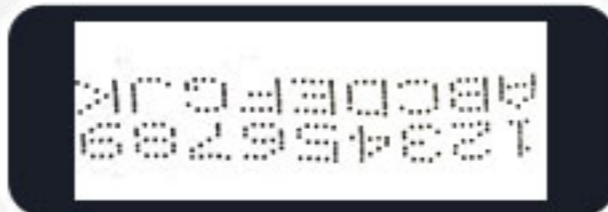
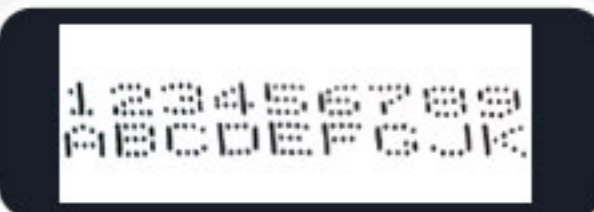
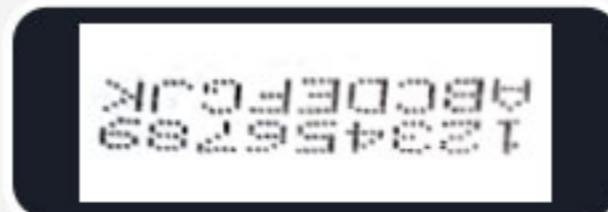
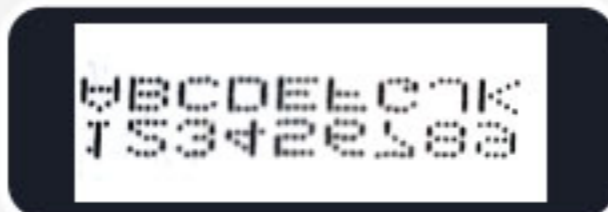
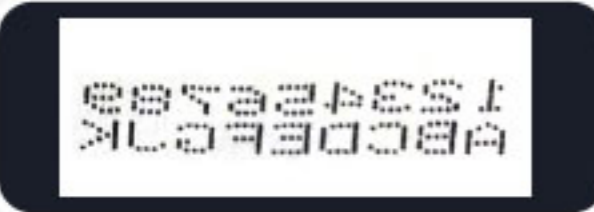
3~15mm



# Print Direction Display



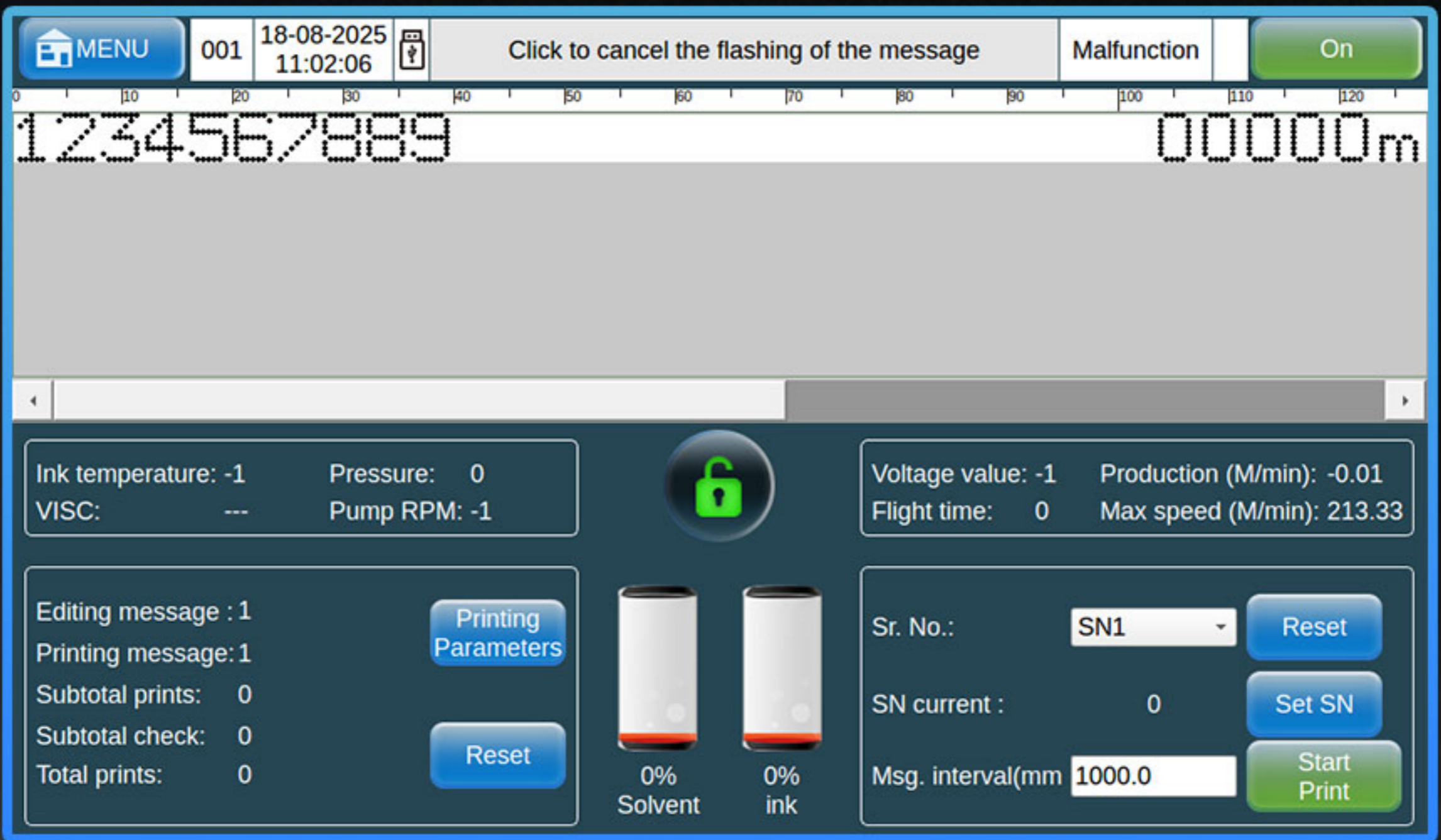
Meet the printing needs of various products



# 10.1"

# Industrial Touch Screen

User-friendly interface, one-key power on/off, simple operation, easy to learn and use. Over 40 languages freely switchable to meet your different needs.



**WARNING**

- Keep all sources of sparks or flames at least 5m(15feet) away from the machine The ink and make up ink are flammable.
- Exercise care to avoid electrical shock hazards.before opening the electrical access door or electrical component cover,be sure to cut off the power supply to the machine.
- Use caution when handling ink or makeupink.If the ink or makeup ink in used is an organic solvent,it must be managed in compliance with the Ordinance on the prevention of Organic Solvent Poisoning Refer to the instruction Manual for details.

**D 660**

# 304 Stainless Steel Housing Fully Sealed Ink Tank

Featuring a dual-pump and dual-agitation system, this white ink machine automatically monitors viscosity and replenishes solvent during pauses. Its consumables offer sealed, plug-and-play replacement for convenience.



# Industrial Interface Comprehensive and Rich

Ports designed with IP68 rating.  
Supports serial port, Ethernet port, counter one-key reset,  
information control, and other functions.



Interface Display



Interface Information

# Speed up to 576 Meters/Minute

\*5×6 dot matrix, single line, dot pitch 0.5mm

Adapts to high-speed production lines,  
meeting both speed and quality requirements for coding.



# Multiple coding methods Clear printing results

Capable of coding on various curved surfaces, concave surfaces, small spaces, etc. Can print QR codes, graphic LOGOs, dates, dot matrix characters, and more.



# PRODUCT PARAMETER

## D660



### Printing Parameters

Printhead Tubing	3m/6m
Nozzle Sizes	40u、50u、60u、75u
Printing Height	2~20mm
Printing Distance	3~30mm
Number of Lines	1~5 lines
Max Printing Speed	576 m/min (5×6 dot matrix, single-row text, and 0.5 mm dot spacing)
Counters	Over 20 independent counters
Ink Colors	Black, Red, Blue, Green, Invisible
Ink Types	High adhesion, Anti-migration, High temperature resistant, Glass special, Penetrating, Food grade, Oil resistant
Selectable Character Matrix	5×6L, 7×6L, 7×10L, 9×8L, 9×11L, 11×11L, 16×16L 24×24L, 32×32L, 11×11B, 16×16B, 24×24B, 32×32B
Printing Materials	Paper boxes, Plastic, Metal, Boards, Pipes, Stone, Glass, Electronic components, Auto parts, Industrial chemical packaging, Medicine, Food, Gift boxes
Printing Content	Text, Time, Date, Patterns, Shifts, Serial numbers, Dynamic barcodes, QR codes, Dynamic serial port data, Dynamic database (Additional content can be added as needed)

### Host Parameters

Operating System	Embedded Linux secure operating system
Display Screen	10.1 inch color display, industrial touch screen
Communication Interfaces	USB, RS232, Ethernet
Protection Level	IP55
Power Parameters	Input 100-240V AC
Rated Power	150W
Mainboard Memory	256M
Machine Material	304 Stainless steel
Machine Dimensions	371mm×355mm×554mm (Length x Width x Height)
Working Environment	Temperature 0-45°C / Humidity 30-70%Rh
External Interfaces	Photoelectric sensor, Encoder, Alarm light, External serial number control and I/O, External information selection and inversion
Supported Languages	Over 40 national languages (including Chinese, English, Arabic, Danish, German, Russian, French, Finnish, Korean, Norwegian, Portuguese, Japanese, Spanish, Italian, and more)