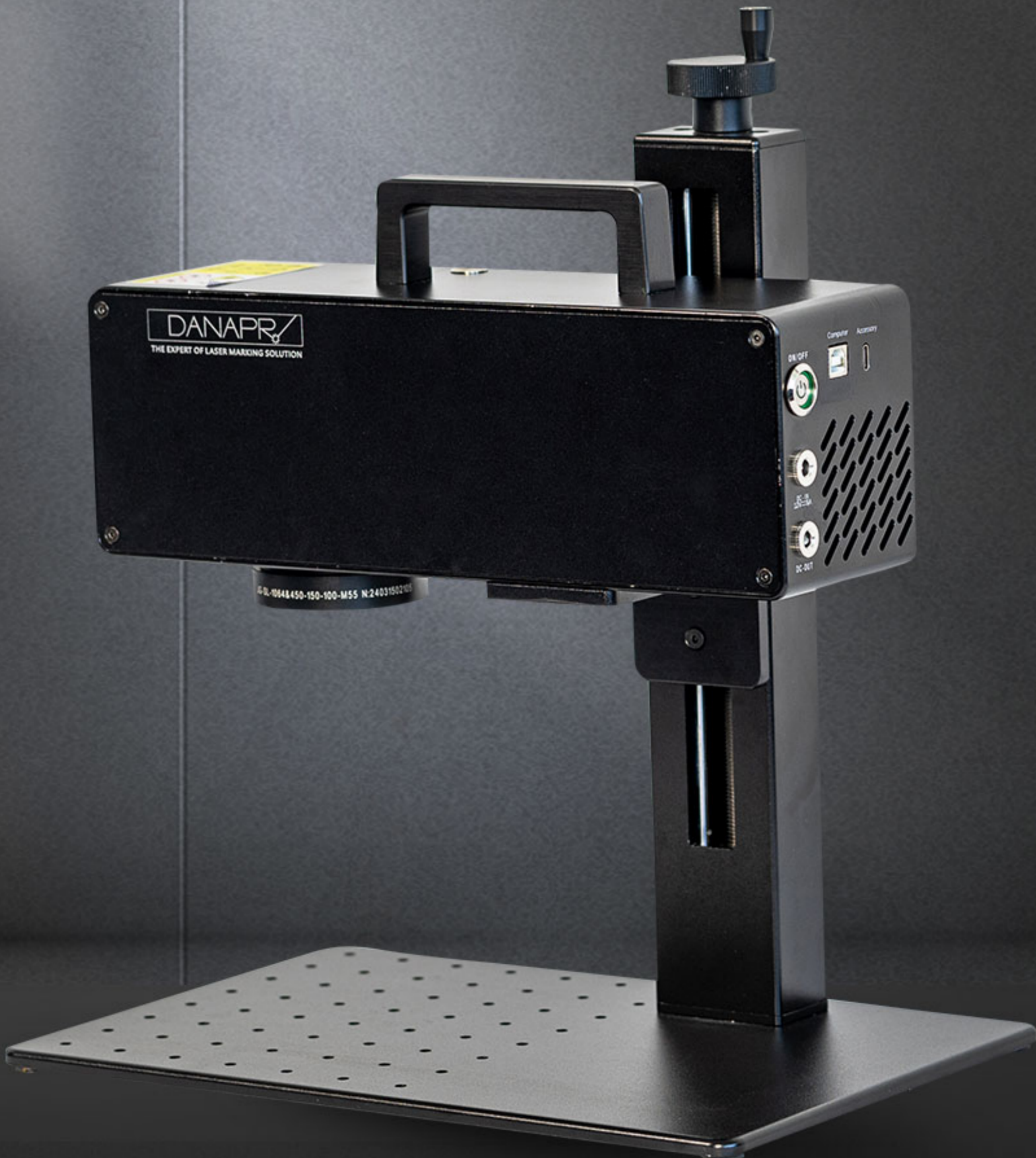


# DANA-3020 Desktop Dual-Laser Marker

COMPACT | SIMPLE | CREATIVE



# GOOD PRODUCT WAIT FOR YOU



**MOBILE PHONE APP**  
Intelligent control



**HANDHELD/DESKTOP**  
Dual-mode



**COMPATIBLE WITH 300+**  
Rich variety of materials

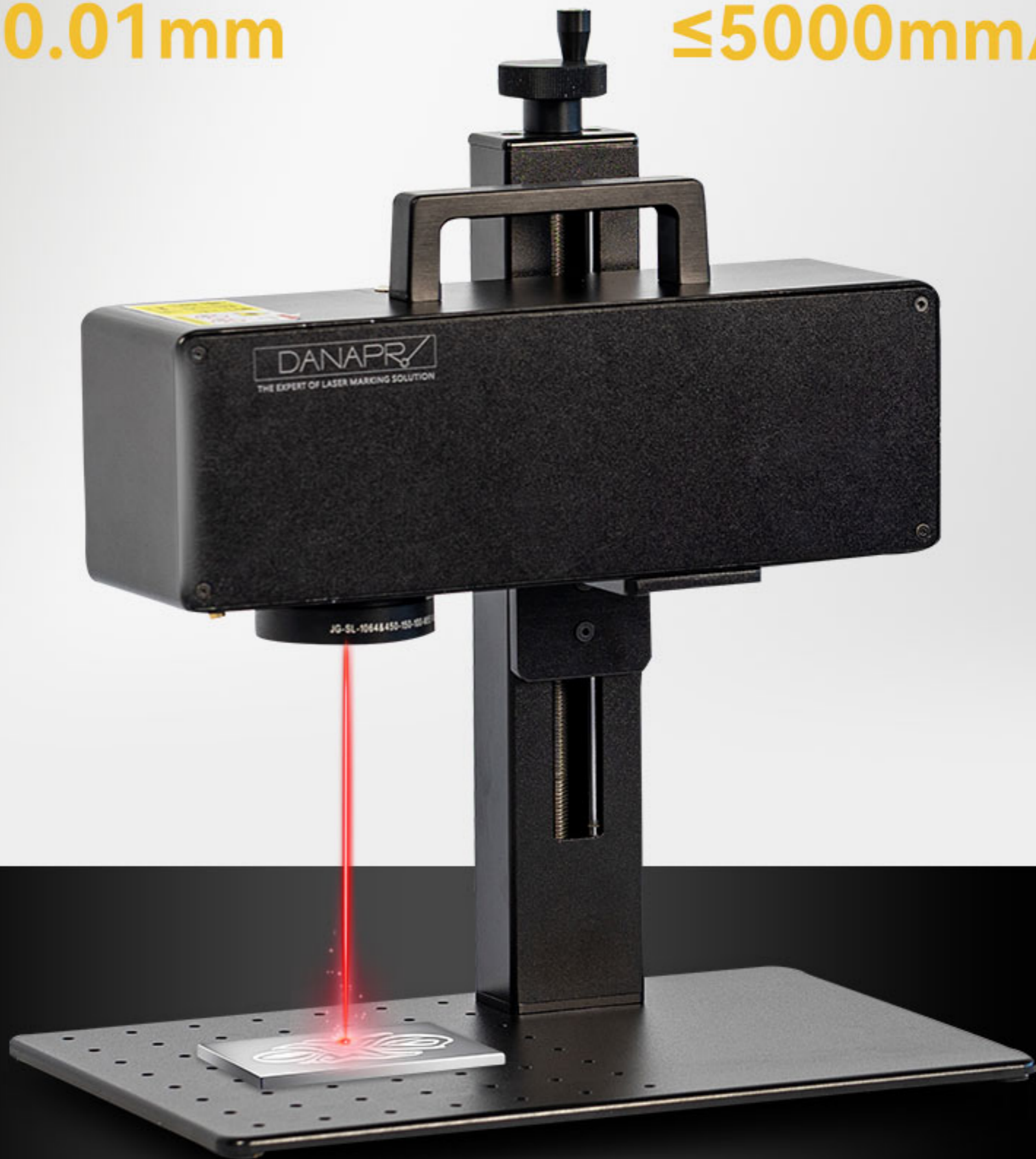


**ONE-CLICK STARTUP**  
Minimalist operation

# HIGH-SPEED AND HIGH-PRECISION MARKING

Accuracy  
 $\leq 0.01\text{mm}$

Speed  
 $\leq 5000\text{mm/s}$



\*For Marking and Engraving



Usage scenarios



## MULTIPLE SCENE OPTIONS Meet various marking requirements

Application: Widely used in electronics, computers, precision devices, hardware, watches and gift industries.



### PERSONALIZED CUSTOMIZATION

---

Personalized jewelry customization  
No ink required, clear and long-lasting



### CREATIVE CUSTOMIZATION

---

No molds required, customize as  
you wish. Unique creations just for you.



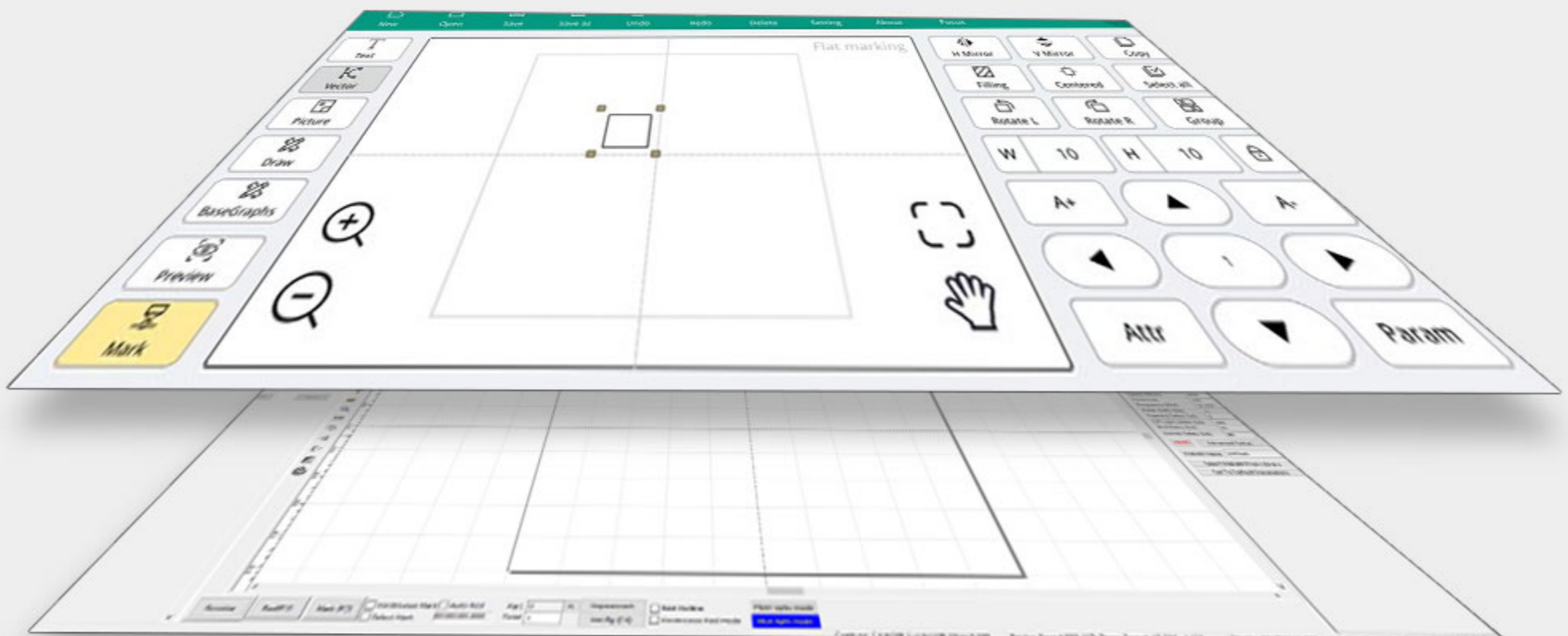
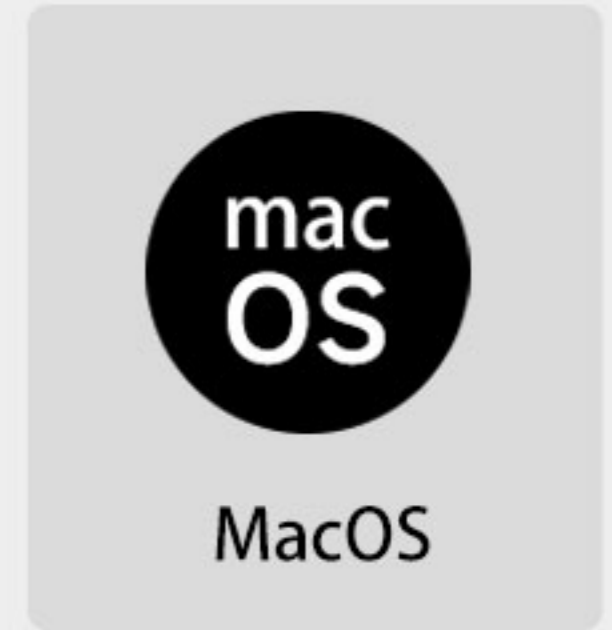
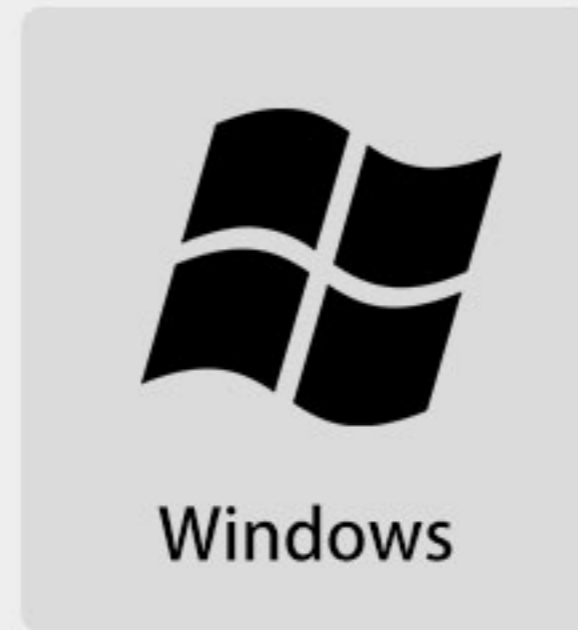
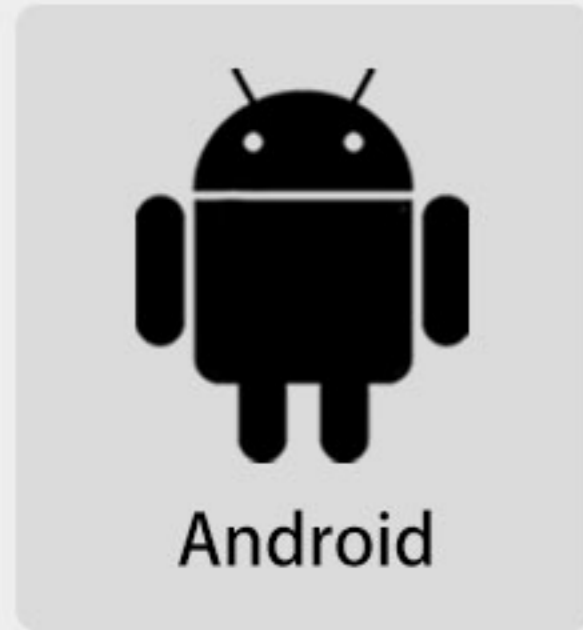
### NAMEPLATE INDUSTRIAL MARKING

---

Suitable for small-batch production  
Multiple specifications available.

# CONTROL SOFTWARE SELECTION

Four types of clients to adapt to different user devices



- Support format such as PLT / DXF / BMP / CORELDRAW / AUTOCAD / Photoshop
- Support batch process such as text, numbers, barcodes, QR codes, date&time, logos



Mode selection

# DUAL POWER MODES

Applicable to metal and non-metal materials

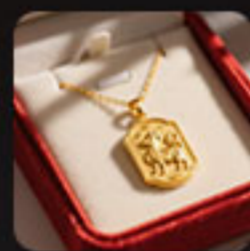
## ● 2W Infrared laser applicable materials:



Stainless Steel



Aluminium alloy



Gold



Silver



Cuprum



Plastic



Acrylic

## ● 10W Blue laser applicable materials:



Wood



Leather



Stone



Ceramic



Paper

# DETAILS ON DISPLAY

01.

## LASER FIELD LENS

Clear focus, wide focusing range  
Excellent marking, good light  
perception and uniform illumination.



02.



WINCH LIFTING HANDLES

03.



CONTROL SWITCH

04.

## HANDHELD/DESKTOP 2-IN-1 WORKING MODES

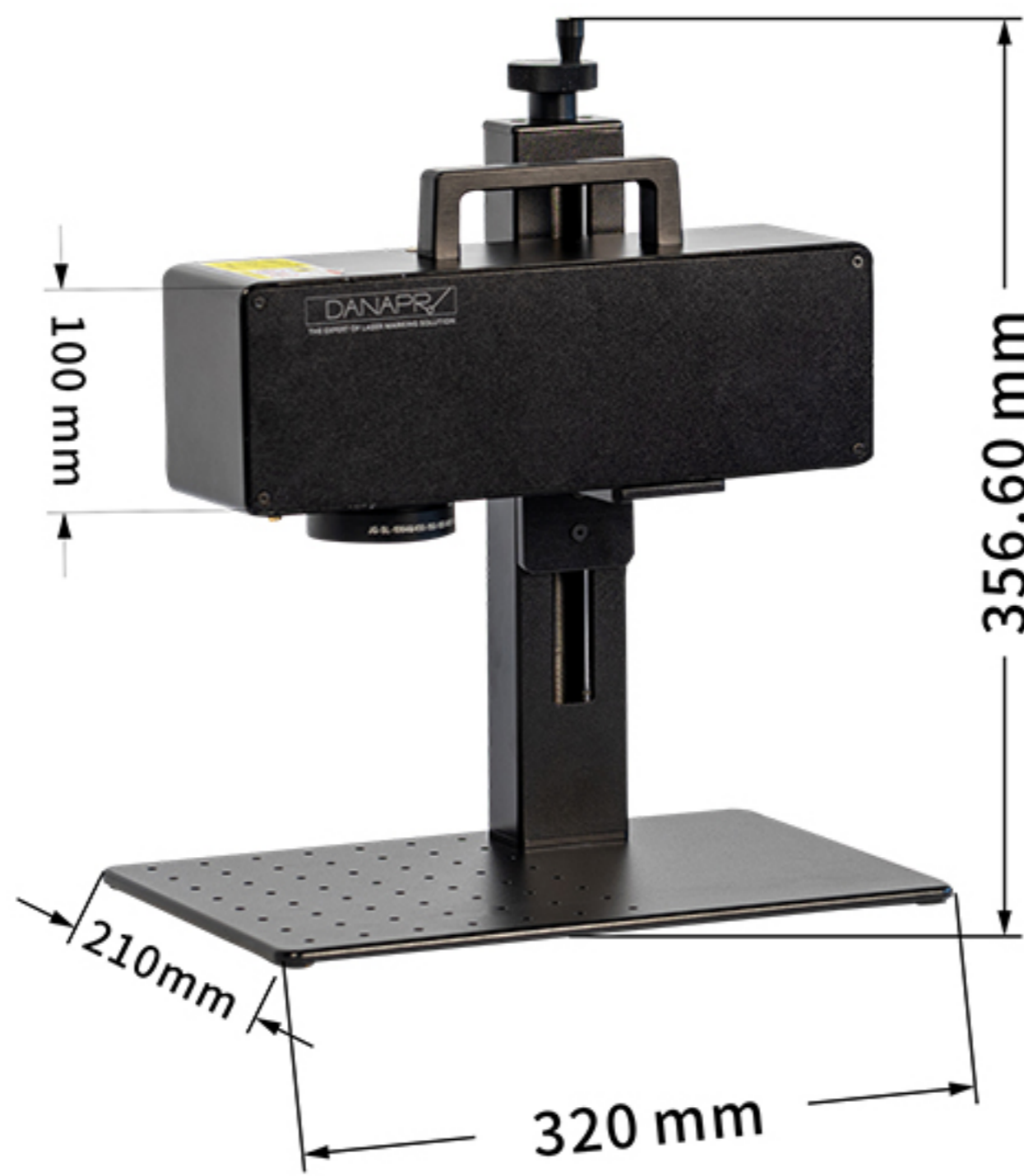
Flexible switching to adapt to diverse  
scenarios.

One machine meets the demands of  
multiple scenarios.



# PRODUCT PARAMETER

## DANA-3020



Laser mode	Infrared light	Blue diode light
Laser output power	2W	10W
Laser wavelength	1064nm	455±5nm
Marking speed	≤5000mm/s	≤4000mm/s
Ambient temperature	10°C - 30°C	
Supply voltage	AC110V - AC240V 50HZ/60HZ, OUTPUT: 12.0v-9.0A	
Laser Type	Fiber laser	
Mark depth	0.015-0.2mm	
Preview speed	≤10000mm/s	
Cooling method	Air cooling -internal fan	
Marking range	100*100mm	
Graphic format supported	PLT / DXF / BMP / CORELDRAW / AUTOCAD / Photoshop	