

FASHIONABLE & MINIMALIST

ERC-11

CLOAKROOM CABINET



ERC-11



FOSHAN ZHIDE HOUSE FURNITURE CO., LTD

M:+86-13927742036

WHATSAPP:+86-13927742036 WECHAT:+86-13927742036

P:+86-757-23376869 F:+86-757-2337686

WEBSITE:WWW.ERCHIFURNITURE.COM EMAIL:ADMIN@ERCHIFURNITURE.COM

ADD:SECOND FLOOR, GUANGHUA STREET, XIXI COMMUNITY, LONGJIANG TOWN, SHUNDE
DISTRICT, FOSHAN CITY

ERC-11
-AISUN-

COMPANY PROFILE



ERCHI FURNITURE IS THE MAIN BRAND PROMOTED BY ZHIDE FURNITURE GROUP. SINCE ITS ESTABLISHMENT IN 2006, IT HAS EMERGED IN THE FURNITURE MARKET WITH ITS UNIQUE DESIGN CONCEPT, EXCELLENT QUALITY AND UNREMITTING PURSUIT OF INNOVATION. WITH THE STRONG SUPPORT OF THE GROUP, ERCHI FURNITURE IS EXTREMELY STRICT IN THE SELECTION OF RAW MATERIALS. IT CAREFULLY SELECTS EACH MATERIAL TO ENSURE THE QUALITY AND SUSTAINABILITY OF PRODUCTS. PURCHASING MOST OF THE RAW MATERIALS, PACKAGING AND SEMI-FINISHED PRODUCTS FROM NEARBY SUPPLIERS NOT ONLY ENSURES THE STABILITY OF SUPPLY, BUT ALSO LAYS A SOLID FOUNDATION FOR THE QUALITY COMMITMENT OF "MADE IN FOSHAN".

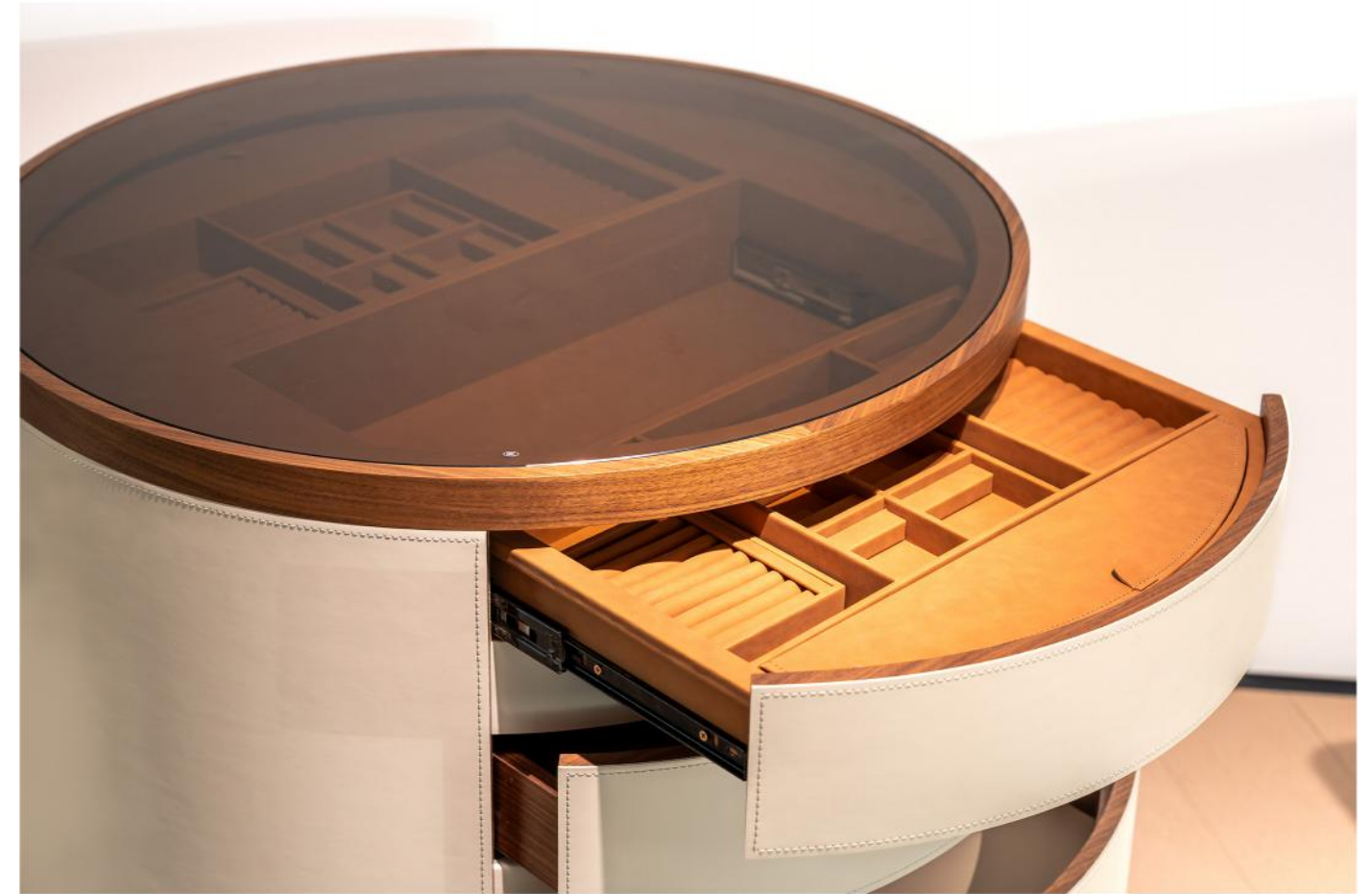
IN TERMS OF DESIGN, ERCHI FURNITURE HAS A PROFESSIONAL INTERNAL R & D DEPARTMENT, WHICH COMBINES CREATIVITY WITH UNIQUE DESIGN EXPERTISE AND CONTINUOUS EXPLORATION OF NEW MATERIALS, TECHNOLOGIES AND PROCESSES TO CONTINUOUSLY INTRODUCE NEW PRODUCTS. ITS DESIGN NOT ONLY PAYS ATTENTION TO THE BALANCE OF FASHION SENSE AND PRACTICABILITY, BUT ALSO CAN MEET THE INDIVIDUALIZED NEEDS OF DIFFERENT CONSUMERS. WHETHER IT IS MODERN MINIMALIST STYLE OR ITALIAN LIGHT LUXURY STYLE, ERCHI FURNITURE CAN PRESENT A DIFFERENT CHARM WITH EXQUISITE CRAFTSMANSHIP AND UNIQUE DESIGN. ERCHI FURNITURE'S PRODUCTS COVER MULTIPLE SERIES, INCLUDING LIVING ROOM SPACE, DINING ROOM SPACE, CLOAKROOM, BEDROOM SPACE AND TEA ROOM SPACE. IN RECENT YEARS, THE CUSTOMIZED SUPPORTING SERVICES PROVIDED BY ERCHI FURNITURE HAVE BEEN HIGHLY PRAISED BY NEW AND OLD CUSTOMERS. ITS PRODUCTS ARE NOT ONLY POPULAR IN THE DOMESTIC MARKET, BUT ALSO EXPORTED TO MANY COUNTRIES AND REGIONS, OCCUPYING AN IMPORTANT POSITION IN THE INTERNATIONAL MARKET. NOWADAYS, THE FOREIGN MARKET ACCOUNTS FOR ABOUT 70% OF THE COMPANY'S REVENUE, FULLY DEMONSTRATING ITS INTERNATIONAL INFLUENCE. ERCHI FURNITURE IS KNOWN FOR ITS UNIQUE AND EXCLUSIVE HIGH-QUALITY PRODUCTS. MOST OF THE DESIGNS ARE COMPLETED EXCLUSIVELY BY ITSELF. EVEN REPLICAS ARE OFTEN DIFFERENT. IT CONTINUOUSLY SURPASSES OTHER PRODUCTS IN TERMS OF QUALITY AND DURABILITY. IT IS DIFFICULT FOR YOU TO FIND PRODUCTS OF THE SAME QUALITY ELSEWHERE, WHICH ALSO MAKES ERCHI FURNITURE A SYMBOL OF QUALITY AND TASTE IN THE HEARTS OF CONSUMERS. IN THE FUTURE, IT IS BELIEVED THAT ERCHI FURNITURE WILL CONTINUE TO ADHERE TO THE CONCEPTS OF INNOVATION, QUALITY AND DESIGN, BRING MORE STUNNING FURNITURE WORKS TO CONSUMERS, AND LEAD THE DEVELOPMENT TREND OF THE FURNITURE INDUSTRY.





DX-6606





DX-6609



DX-6608



DX-6604



LA PERFEZIONE GEOMETRICA DEL CERCHIO INCONTRA L'ELEGANZA DELLACORNICE IN CUIOIO: NASCE COSI' CIRCLE, UNO SPECCHIO DA PARETE CHEARREDA CON SEMPLICITÀ OGNI AMBIENTE.

THE GEOMETRIC PERFECTION OF THE CIRCLE MEETS THE ELEGANCE OFTHE HIDE FRAME: THUS RISES CIRCLE, A WALL MIRROR THAT FURNISHESANY ENVIRONMENT WITH SIMPLICITY.



DX-8829B

LA PERFEZIONE GEOMETRICA DEL CERCHIO INCONTRA L'ELEGANZA DELLACORNICE IN CUOIO: NASCE COSI' CIRCLE, UNO SPECCHIO DA PARETE CHE ARREDA CON SEMPLICITÀ OGNI AMBIENTE.

THE GEOMETRIC PERFECTION OF THE CIRCLE MEETS THE ELEGANCE OF THE HIDE FRAME: THUS RISES CIRCLE, A WALL MIRROR THAT FURNISHES ANY ENVIRONMENT WITH SIMPLICITY.



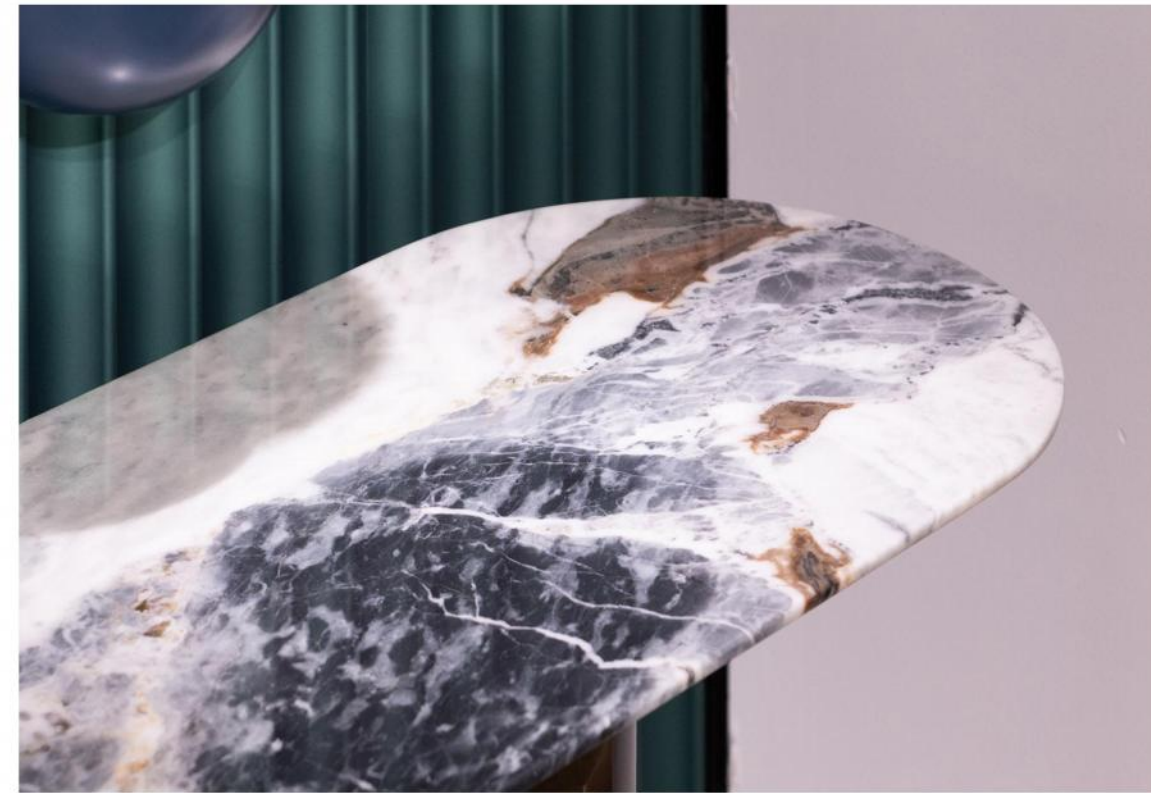
DH-2811

ESPOSITORI E CONTENITORI ALLO STESSO TEMPO, LE MADIE SONO COMPLEMENTI IMMANCABILI NELLA ZONA GIORNO. DALL'ELEMENTO PIÙ SEMPLICE AL SISTEMA COMPLESSO, DALLO STILE CLASSICO A QUELLO CONTEMPORANEO, SEMPRE CON UN OCCHIO DI RIGUARDO AI MATERIALI, LA COLLEZIONE DI MADIE DI POLIFORM È MOLTO VARIEGATA, GRAZIE ALLE PROPOSTE DEI DESIGNER JEAN-MARIE MASSAUD, EMMANUEL GALLINA E CARLO COLOMBO.

DISPLAY AND STORAGE UNITS AT THE SAME TIME, SIDEBORDS ARE ESSENTIAL ADDITIONS TO THE DAY AREA. FROM THE SIMPLEST ELEMENT TO THE COMPLEX SYSTEM, FROM THE CLASSIC STYLE TO THE CONTEMPORARY ONE, ALWAYS WITH A SPECIAL ATTENTION TO MATERIALS. POLIFORM'S COLLECTION OF SIDEBORDS IS VERY VARIED, THANKS TO THE OFFERS BY THE DESIGNERS JEAN-MARIE MASSAUD, EMMANUEL GALLINA AND CARLO COLOMBO.



三
二
一
AISUN 三二一



AISUN

ESPOSITORI E CONTENITORI ALLO STESSO TEMPO, LE MADIE SONO COMPLEMENTI IMMANCABILI NELLA ZONA GIORNO. DALL'ELEMENTO PIÙ SEMPLICE AL SISTEMA COMPLESSO, DALLO STILE CLASSICO A QUELLO CONTEMPORANEO, SEMPRE CON UN OCCHIO DI RIGUARDO AI MATERIALI. LA COLLEZIONE DI MADIE DI POLIFORM È MOLTO VARIEGATA, GRAZIE ALLE PROPOSTE DEI DESIGNER JEAN-MARIE MASSAUD, EMMANUEL GALLINA E CARLO COLOMBO.

DISPLAY AND STORAGE UNITS AT THE SAME TIME, SIDEBORDS ARE ESSENTIAL ADDITIONS TO THE DAY AREA. FROM THE SIMPLEST ELEMENT TO THE COMPLEX SYSTEM, FROM THE CLASSIC STYLE TO THE CONTEMPORARY ONE, ALWAYS WITH A SPECIAL ATTENTION TO MATERIALS. POLIFORM'S COLLECTION OF SIDEBORDS IS VERY VARIED, THANKS TO THE OFFERS BY THE DESIGNERS JEAN-MARIE MASSAUD, EMMANUEL GALLINA AND CARLO COLOMBO.



CONSOLE TABLE

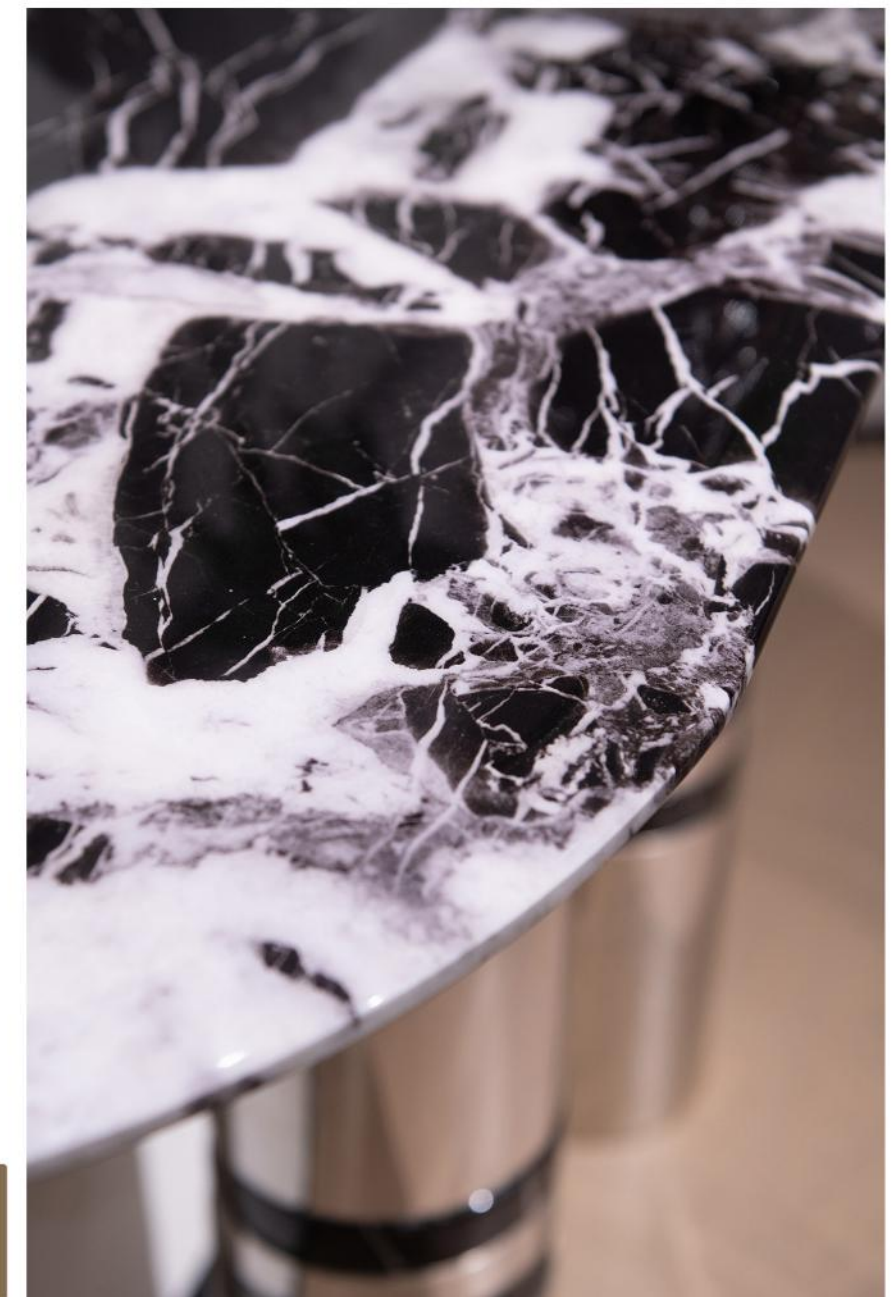
FASHIONABLE & MINIMALIST.2025



FASHIONABLE & MINIMALIST.2025

QUI E NELLE PAGINE PRECEDENTI: MADIE SYMPHONY IN ROVERE GOLD CON TOPIN MARMO LEVIGATO SAHARA NOIR FINITURA POLIESTERE, BASAMENTO CON PIEDINIE MANIGLIA IN BROWN NICKEL OPACO, TAVOLO HENRY CON PIANO IN MARMOLEVIGATO SAHARA NOIR FINITURA POLIESTERE E STRUTTURA IN OLMO NERO. SEDIESOPHIE LITE CON BRACCIOLI, RIVESTIMENTO SFODERABILE IN TESSUTO ANTEA 03VISONO E STRUTTURA IN OLMO NERO. TAPPETO CANNELE. SOTTO: STRUTTURA INTER-NA IN ROVERE GOLD, CASSETTIERA CON FONDO RIVESTITO IN TECNOCOVER GRAIN06 NOCCIOLA, ATTREZZATA CON PORTAPOSATE IN MASSELLO TINTO ROVERE GOLDE FONDO IN TECNOCOVER GRAIN 06 NOCCIOLA, RIPIANO IN VETRO FUMÉ, LUCE ALED INTEGRATA CON SENSORE.

THIS AND PREVIOUS PAGES: SYMPHONY SIDEBORDS IN GOLD OAK WITH TOP INMAT MARBLE SAHARA NOIR POLYESTER FINISH, BASE WITH FEET AND HANDLE INMAT BROWN NICKEL. HENRY TABLE WITH TOP IN MAT MARBLE SAHARA NOIR POLY-ESTER FINISH AND STRUCTURE IN BLACK ELM. SOPHIE LITE CHAIRS WITH ARMRESTSWITH REMOVABLE COVER IN FABRIC ANTEA 03 VISONO AND STRUCTURE IN BLACKELM.CARPET CANNELE. BELOW: INNER STRUCTURE IN GOLD OAK, CHEST OF DRAW-ERS WITH BOTTOM IN TECNOCOVER GRAIN 06 NOCCIOLA, ACCESSORIZED WITHCUTLERY TRAY IN SOLID WOOD STAINED GOLD OAK AND BOTTOM IN TECNOCOVERGRAIN 06 NOCCIOLA, SHELF



AI SUN

CONSOLE TABLE

FASHIONABLE & MINIMALIST.2025

BAXTER YVES DESIGNED BY ROBERTO LAZZERONI IS A DRESSING TABLE, A DESK, A CONSOLE. THE IDEA BEHIND YVES IS TO CREATE A SIMPLE BUT MULTIFUNCTIONAL LINE, WITH SMALL DETAILS THE SAME PIECE OF FURNITURE TAKES ON THREE DIFFERENT IDENTITIES. THE STRUCTURE CAN BE CHOSEN IN SATIN-FINISH BRASS-PLATED METAL, HAND-BRUSHED BURNISHED METAL, OR SATIN NICKEL-PLATED METAL. THE STRUCTURE OF THE CABINET IS IN MDF COMPLETELY COVERED IN LEATHER. THE DRESSING TABLE IS CHARACTERIZED BY A FLAP TOP WITH AN OVAL MIRROR, THE INTERNAL STRUCTURE OF THE COMPARTMENTS IS IN SHEET METAL COVERED IN LEATHER. THE DESK STANDS OUT FOR THE DRAWERS IN INDIA ROSEWOOD WITH A MATT FINISH AND SMALL DECORATIVE DETAILS IN METAL. THE CONSOLE, INSTEAD, HAS ONLY ONE LACQUERED DRAWER COMPARTMENT.



DH-8829



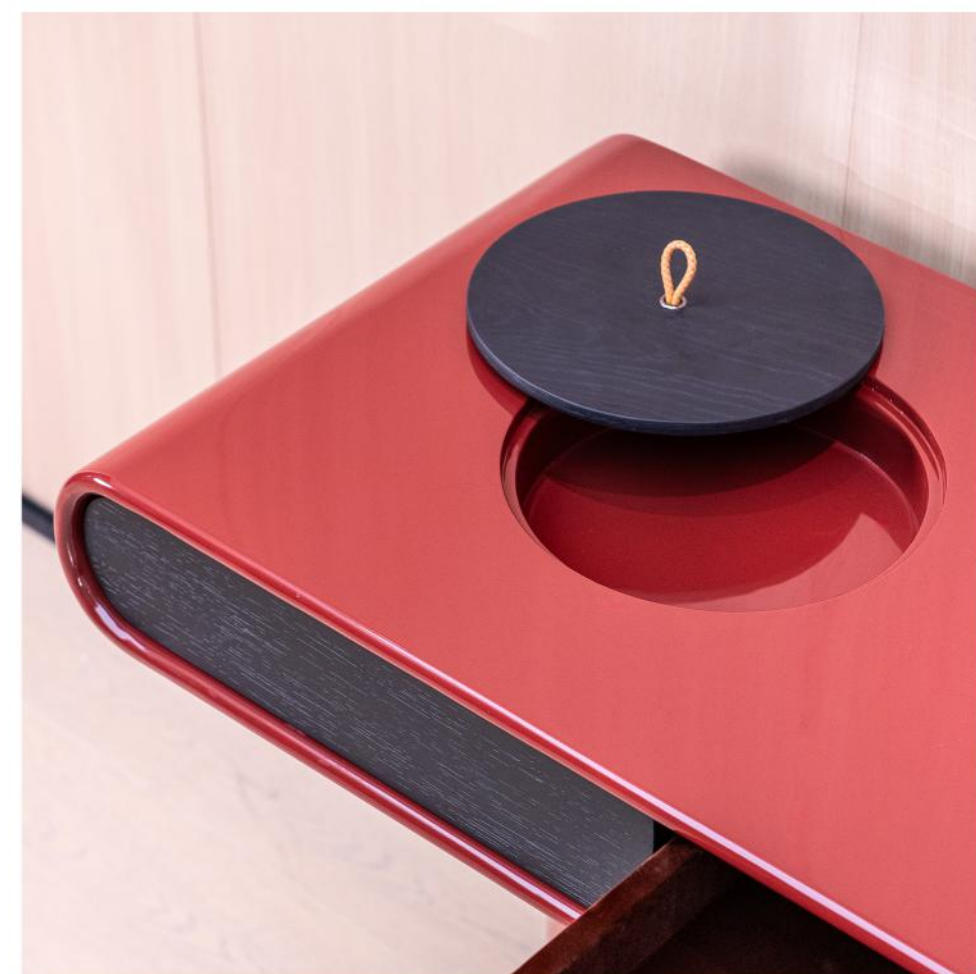
FASHIONABLE & MINIMALIST.2025





DH-5509

THIS IS NOT A "ENTRANCE" IN THE TRADITIONAL SENSE, BUT A CREATIVE SIDE TABLE/ENTRANCE TABLE. IT IS BASED ON RED AND BLACK, THE SHAPE BREAKS THE CONVENTION, ONE SIDE IS A COMBINATION OF CYLINDERS AND SQUARES, THE OTHER SIDE IS A CURVED TUBE BODY, THE TABLE TOP HAS DRAWERS AND CIRCULAR DECORATIONS, THE STYLE IS MODERN ART, CAN BE USED IN THE ENTRANCE AREA FOR DECORATION, STORAGE, WITH A UNIQUE APPEARANCE TO BECOME THE VISUAL FOCUS OF THE SPACE, ADD PERSONALITY AND DESIGN TO THE HOME.





DH-5509

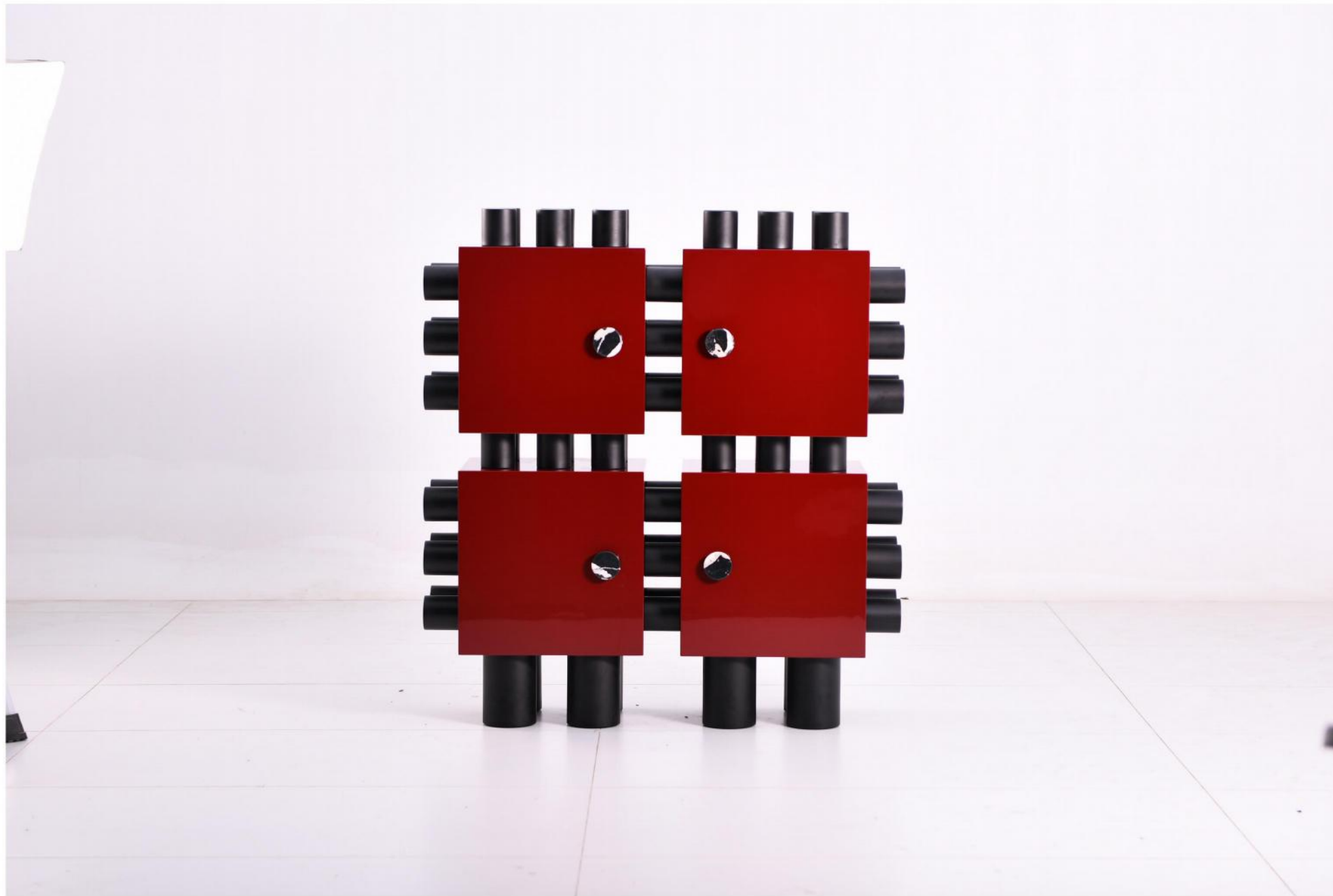
IT STANDS QUIETLY AT THE DOOR, A SILENT RITUAL ATTENDANT:
STEADILY CATCH THE DUST AND BAGS YOU UNLOADED,
THE SOFT SOUND OF PLACING THE KEY PROPERLY, THE RESIDUAL HEAT OF
THE SCARF.
SOLIDITY IS ITS SILENT COMMITMENT TO LIFE;
THAT DEEP BURGUNDY,
IT IS A POETIC HALO QUIETLY PLATED FOR ORDINARY DAYS.



ERCHI 而驰



DH-8840



DQ-6601





DQ-6601

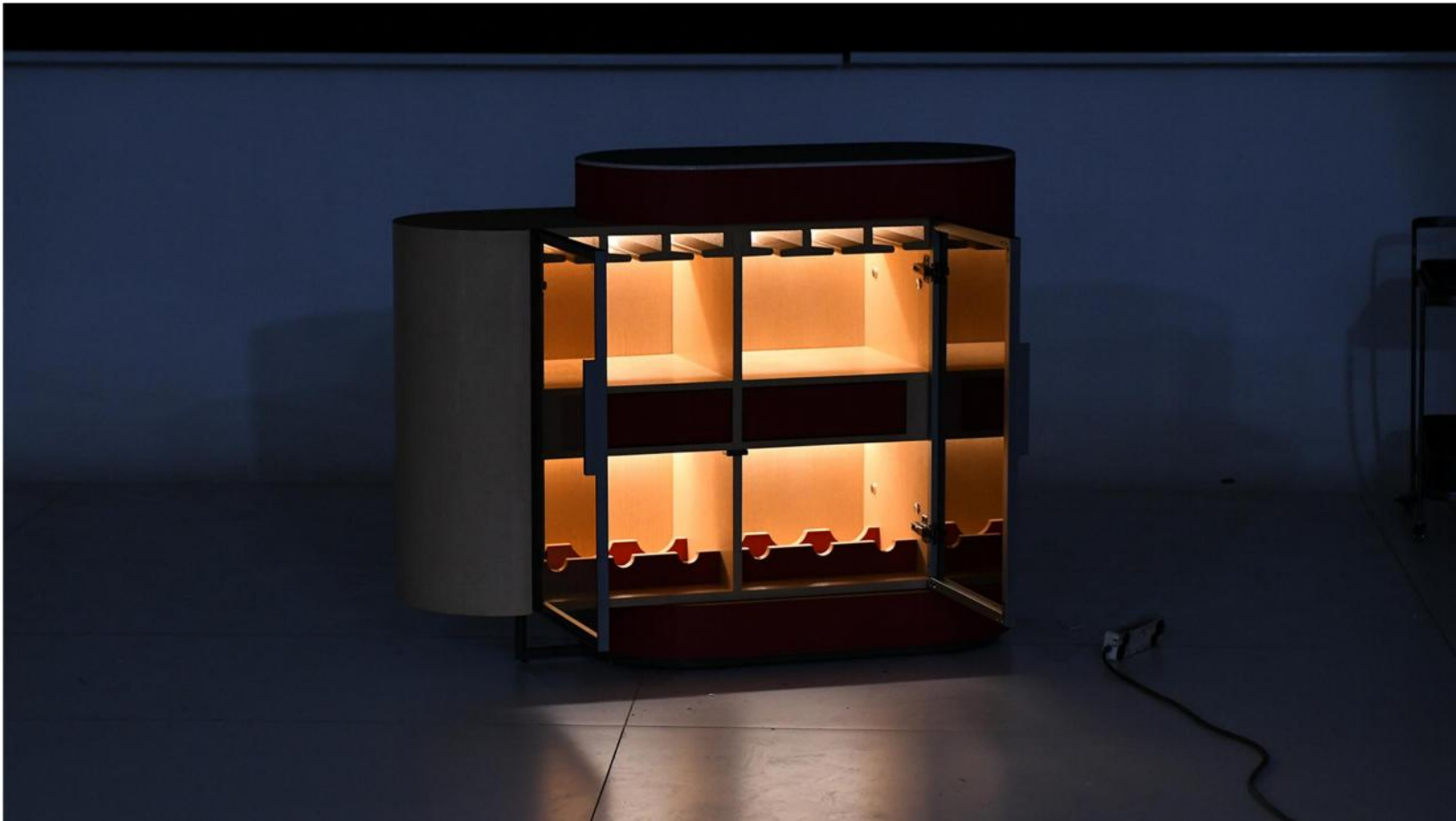


DQ-6601





DQ-6601







18MM ENGLISH
GREEN NATURAL MARBLE



18MM VIOLET
RED NATURAL MARBLE

DD-6614

THIS IS A SET OF MODERN SIDEBOARDS IN TWO DIFFERENT COLORWAYS. THE CABINET HAS SIMPLE AND NEAT LINES, THE UPPER PART ADOPTS A DESIGN THAT COMBINES GLASS AND COUNTERTOP, THE LEFT SIDE COUNTER SURFACE IS LIKE MARBLE TEXTURE, THE GLASS SHELF IS TRANSPARENT, AND THERE IS ALSO A GLASS STORAGE BOARD THAT CAN BE TURNED DOWN; THE RIGHT SIDE IS RED, BRIGHT COLOR. BELOW IS A CLOSED CABINET, PROVIDING STORAGE SPACE, THE OVERALL SHAPE IS SIMPLE AND FASHIONABLE, WITH BOTH DISPLAY AND STORAGE FUNCTIONS, SUITABLE FOR A VARIETY OF MODERN HOME SCENARIOS.





DQ-6613

THE CABINET HAS NEAT LINES, AND THE LIGHT GRAY MAIN TONE IS PAIRED WITH RED COMPARTMENTS, WHICH IS CALM AND ENERGETIC. THE GLASS CABINET DOOR IS TRANSPARENT, ALLOWING FOR A CLEAR DISPLAY OF WINE GLASSES AND WINE. WHEN OPENED, THE BUILT-IN LIGHT LIGHTS UP TO SET OFF THE ATMOSPHERE, WHICH NOT ONLY MAKES IT EASY TO ACCESS ITEMS, BUT ALSO MAKES THE DISPLAYED WINE AND GLASSES MORE EXQUISITE, WHICH IS A BRIGHT EXISTENCE WITH BOTH STORAGE AND DECORATION FUNCTIONS IN THE LIVING ROOM, ADDING STYLE AND WARMTH TO THE SPACE.





DX-6605





DX-8847



DD-8847/DG-8847



DX-5513



DX-5512





DX-5516



DD-5513



DX-5517





DX-5518





DX-6601

E1 GRADE BOARD NATURAL SMOKED WOOD VENEER GLOSSY PAINT PROCESS

E1 GRADE PLATE NATURAL SMOKED WOOD VENEER ZINC ALLOY HANDLE







DS-5515





DS-5513

MODERN SIMPLICITY AND ARTISTIC CREATIVITY ARE INTEGRATED INTO THE STYLE, ABANDONING TRADITIONAL REGULAR FORMS, CONSTRUCTING VISUAL ORDER WITH GEOMETRIC ELEMENTS, INTERPRETING AVANT-GARDE AESTHETICS WITH SIMPLE LINES AND BLOCKS, BREAKING THE STEREOTYPE OF CONVENTIONAL BOOKSHELVES, AND INJECTING ARTISTIC VITALITY INTO THE SPACE.

IT IS COMPOSED OF IRREGULAR ARCS AND STRAIGHT PLATES, THE CURVED PART ADDS A SOFT SENSE OF FLOW, AND THE STRAIGHT SHAPE STRENGTHENS THE TOUGHNESS AND NEATNESS, AND THE TWO ARE ARRANGED IN A STAGGERED MANNER, FORMING A RICH VISUAL LAYER, WHICH NOT ONLY SUPPORTS THE SHELF, BUT ALSO BECOMES A DECORATIVE "ARTISTIC SYMBOL", SO THAT THE BOOK-SHELF CHANGES FROM PRACTICAL FURNITURE TO SPACE INSTALLATION ART.





DS-8803



DQ-2811

BAXTER YVES DESIGNED BY ROBERTO LAZZERONI IS A DRESSING TABLE, A DESK, A CONSOLE. THE IDEA BEHIND YVES IS TO CREATE A SIMPLE BUT MULTIFUNCTIONAL LINE, WITH SMALL DETAILS THE SAME PIECE OF FURNITURE TAKES ON THREE DIFFERENT IDENTITIES. THE STRUCTURE CAN BE CHOSEN IN SATIN-FINISH BRASS-PLATED METAL, HAND-BRUSHED BURNISHED METAL, OR SATIN NICKEL-PLATED METAL. THE STRUCTURE OF THE CABINET IS IN MDF COMPLETELY COVERED IN LEATHER. THE DRESSING TABLE IS CHARACTERIZED BY A FLAP TOP WITH AN OVAL MIRROR, THE INTERNAL STRUCTURE OF THE COMPARTMENTS IS IN SHEET METAL COVERED IN LEATHER. THE DESK STANDS OUT FOR THE DRAWERS IN INDIA ROSEWOOD WITH A MATT FINISH AND SMALL DECORATIVE DETAILS IN METAL. THE CONSOLE, INSTEAD, HAS ONLY ONE LACQUERED DRAWER COMPARTMENT.



ERCHI 而驰



ESPOSITORI E CONTENITORI ALLO STESSO TEMPO, LE MADIE SONO COMPLEMENTI IMMANCABILI NELLA ZONA GIORNO. DALL'ELEMENTO PIÙ SEMPLICE AL SISTEMA COMPLESSO, DALLO STILE CLASSICO A QUELLO CONTEMPORANEO, SEMPRE CON UN OCCHIO DI RIGUARDO AI MATERIALI. LA COLLEZIONE DI MADIE DI POLIFORM È MOLTO VARIEGATA, GRAZIE ALLE PROPOSTE DEI DESIGNER JEAN-MARIE MASSAUD, EMMANUEL GALLINA E CARLO COLOMBO.

DISPLAY AND STORAGE UNITS AT THE SAME TIME, SHELVES ARE ESSENTIAL ADDITIONS TO THE DAY AREA. FROM THE SIMPLEST ELEMENT TO THE COMPLEX SYSTEM, FROM THE CLASSIC STYLE TO THE CONTEMPORARY ONE, ALWAYS WITH A SPECIAL ATTENTION TO MATERIALS. POLIFORM'S COLLECTION OF SHELVES IS VERY VARIED, THANKS TO THE OFFERS BY THE DESIGNERS JEAN-MARIE MASSAUD, EMMANUEL GALLINA AND CARLO COLOMBO.



DS-1802



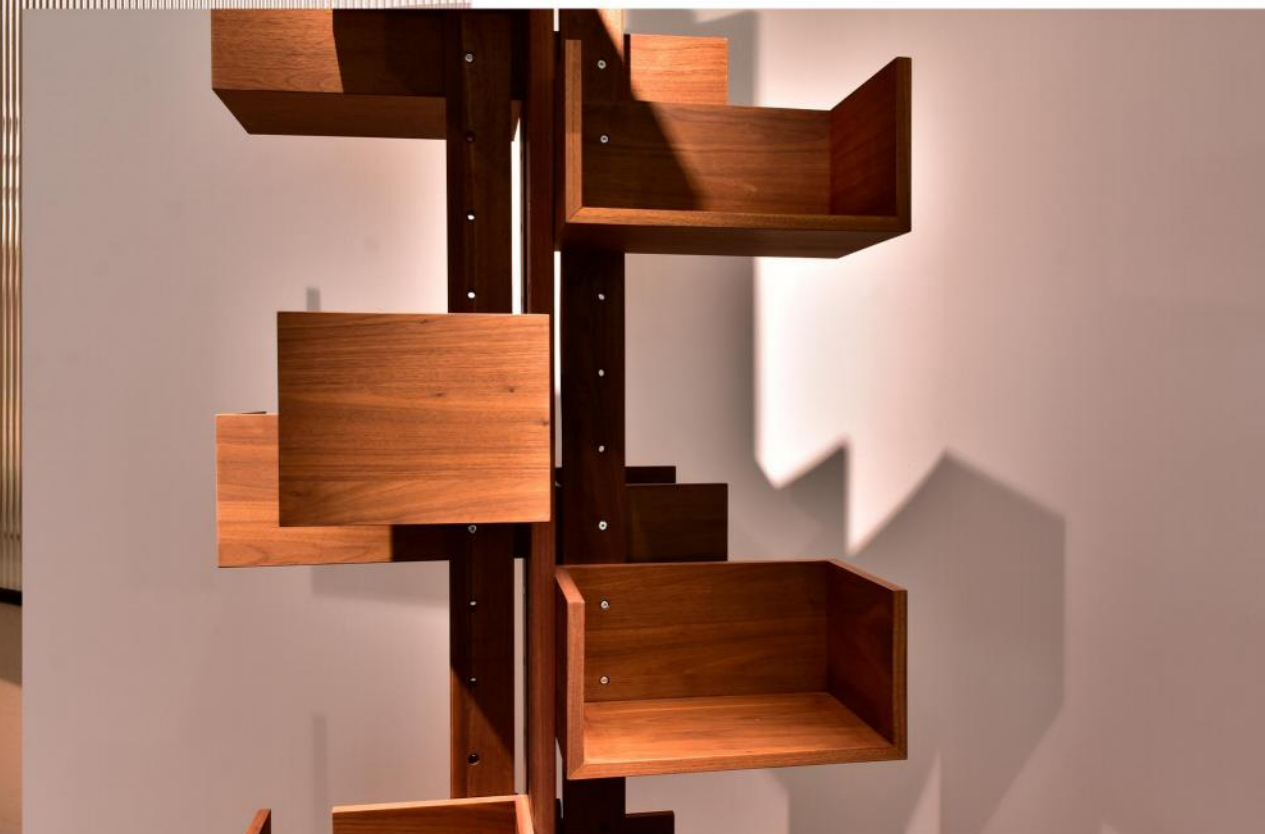
DS-6632

ERCHI 而驰

ESPOSITORI E CONTENITORI ALLO STESSO TEMPO, LE MADIE SONO COMPLEMENTI IMMANCABILI NELLA ZONA GIORNO. DALL'ELEMENTO PIÙ SEMPLICE AL SISTEMA COMPLESSO, DALLO STILE CLASSICO A QUELLO CONTEMPORANEO, SEMPRE CON UN OCCHIO DI RIGUARDO AI MATERIALI. LA COLLEZIONE DI MADIE DI POLIFORM È MOLTO VARIEGATA, GRAZIE ALLE PROPOSTE DEI DESIGNER JEAN-MARIE MASSAUD, EMMANUEL GALLINA E CARLO COLOMBO.

DISPLAY AND STORAGE UNITS AT THE SAME TIME, SIDEBOARDS ARE ESSENTIAL ADDITIONS TO THE DAY AREA. FROM THE SIMPLEST ELEMENT TO THE COMPLEX SYSTEM, FROM THE CLASSIC STYLE TO THE CONTEMPORARY ONE, ALWAYS WITH A SPECIAL ATTENTION TO MATERIALS. POLIFORM'S COLLECTION OF SIDEBOARDS IS VERY VARIED, THANKS TO THE OFFERS BY THE DESIGNERS JEAN-MARIE MASSAUD, EMMANUEL GALLINA AND CARLO COLOMBO.

DS-6618



ERCHI 而驰



DS-8828

ERCHI 而驰



DS-8816A



DS-8816B

ERCHI 而驰



DS-2307

ESPOSITORI E CONTENITORI ALLO STESSO TEMPO, LE MADIE SONO COMPLEMENTI IMMANCABILI NELLA ZONA GIORNO. DALL'ELEMENTO PIÙ SEMPLICE AL SISTEMA COMPLESSO, DALLO STILE CLASSICO A QUELLO CONTEMPORANEO, SEMPRE CON UN OCCHIO DI RIGUARDO AI MATERIALI. LA COLLEZIONE DI MADIE DI POLIFORM È MOLTO VARIEGATA, GRAZIE ALLE PROPOSTE DEI DESIGNER JEAN-MARIE MASSAUD, EMMANUEL GALLINA E CARLO COLOMBO.

DISPLAY AND STORAGE UNITS AT THE SAME TIME, SIDEBOARDS ARE ESSENTIAL ADDITIONS TO THE DAY AREA. FROM THE SIMPLEST ELEMENT TO THE COMPLEX SYSTEM, FROM THE CLASSIC STYLE TO THE CONTEMPORARY ONE, ALWAYS WITH A SPECIAL ATTENTION TO MATERIALS. POLIFORM'S COLLECTION OF SIDEBOARDS IS VERY VARIED, THANKS TO THE OFFERS BY THE DESIGNERS JEAN-MARIE MASSAUD, EMMANUEL GALLINA AND CARLO COLOMBO.



DS-1802



DZ-2305



DZ-8810





DZ-8832



DRESSING TABLE

FASHIONABLE & MINIMALIST.2025



FASHIONABLE & MINIMALIST.2025



DZ-8831







DZ-140

YVES DRESSING TABLE FROM BAXTER DESIGNED
BY ROBERTO LAZZERONI



ITEN NO: DZ-8829 SIZE: 120*60*85.5CM

BAXTER YVES DESIGNED BY ROBERTO LAZZERONI IS A DRESSING TABLE, A DESK, A CONSOLE. THE IDEA BEHIND YVES IS TO CREATE A SIMPLE BUT MULTIFUNCTIONAL LINE, WITH SMALL DETAILS THE SAME PIECE OF FURNITURE TAKES ON THREE DIFFERENT IDENTITIES. THE STRUCTURE CAN BE CHOSEN IN SATIN-FINISH BRASS-PLATED METAL, HAND-BRUSHED BURNISHED METAL, OR SATIN NICKEL-PLATED METAL. THE STRUCTURE OF THE CABINET IS IN MDF COMPLETELY COVERED IN LEATHER.

THE DRESSING TABLE IS CHARACTERIZED BY A FLAP TOP WITH AN OVAL MIRROR, THE INTERNAL STRUCTURE OF THE COMPARTMENTS IS IN SHEET METAL COVERED IN LEATHER. THE DESK STANDS OUT FOR THE DRAWERS IN INDIA ROSEWOOD WITH A MATT FINISH AND SMALL DECORATIVE DETAILS IN METAL. THE CONSOLE, INSTEAD, HAS ONLY ONE LACQUERED DRAWER COMPARTMENT.





DZ-2966





DZ-8802





DZ-8813



DZ-8801





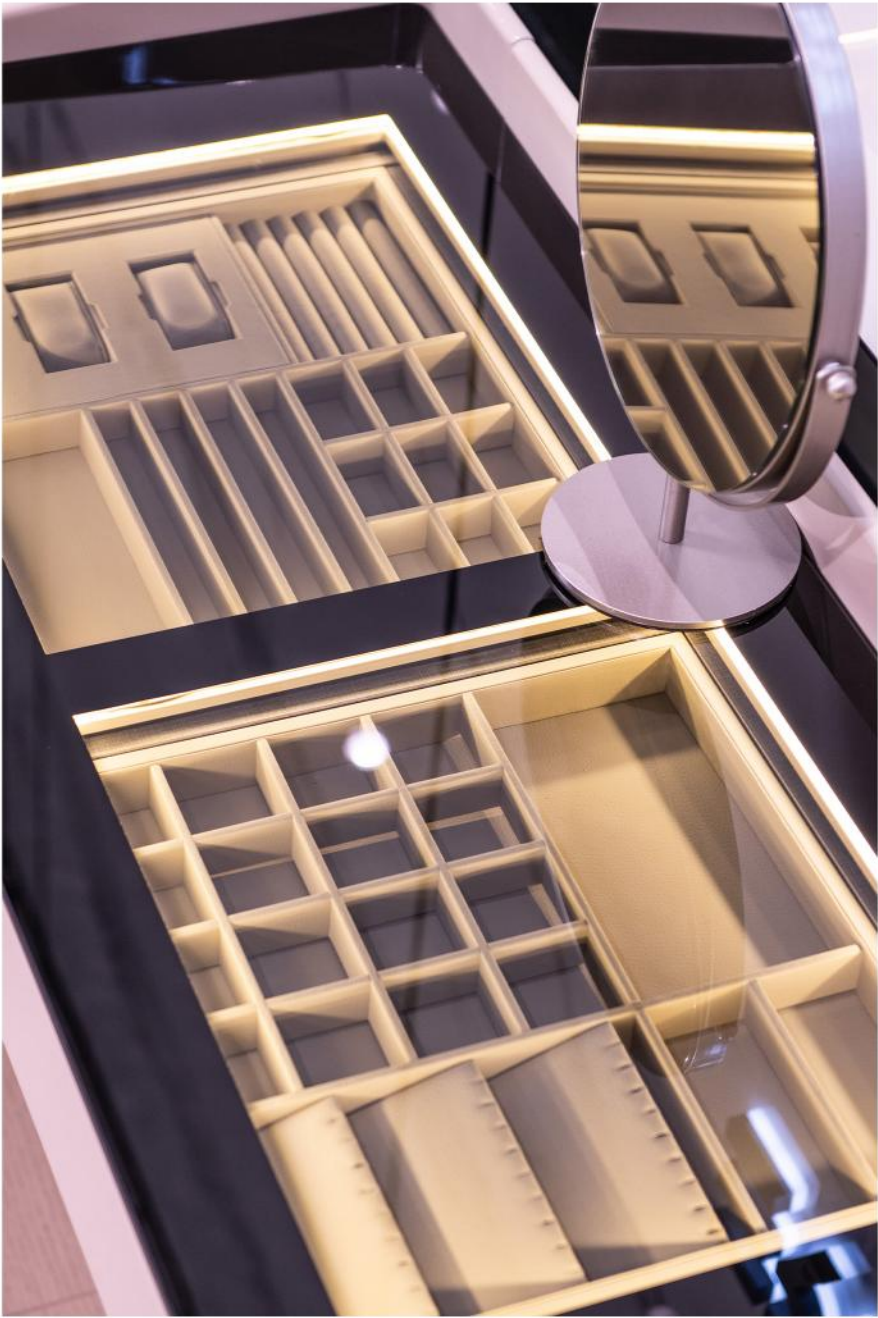
DZ-8806





DZ-5502





DZ-8812





DZ-8807





DZ-8807





DZ-5502A



DZ-140



DZ-8810B



EC-S009



DZ-2966



DZ-2305



EC-T001



EC-T002



DZ-5503



DZ-5502B



DZ-8831



DZ-8803



DZ-8805





天然大理石地柜

VSTEC-TV-1168-220



TV-1168



DG-138



DG-2888





DD-8824

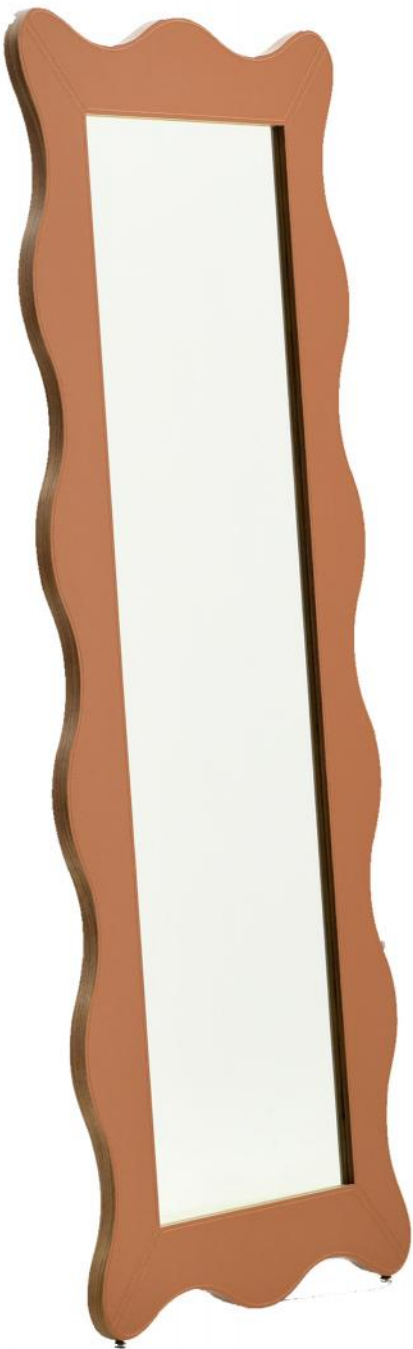
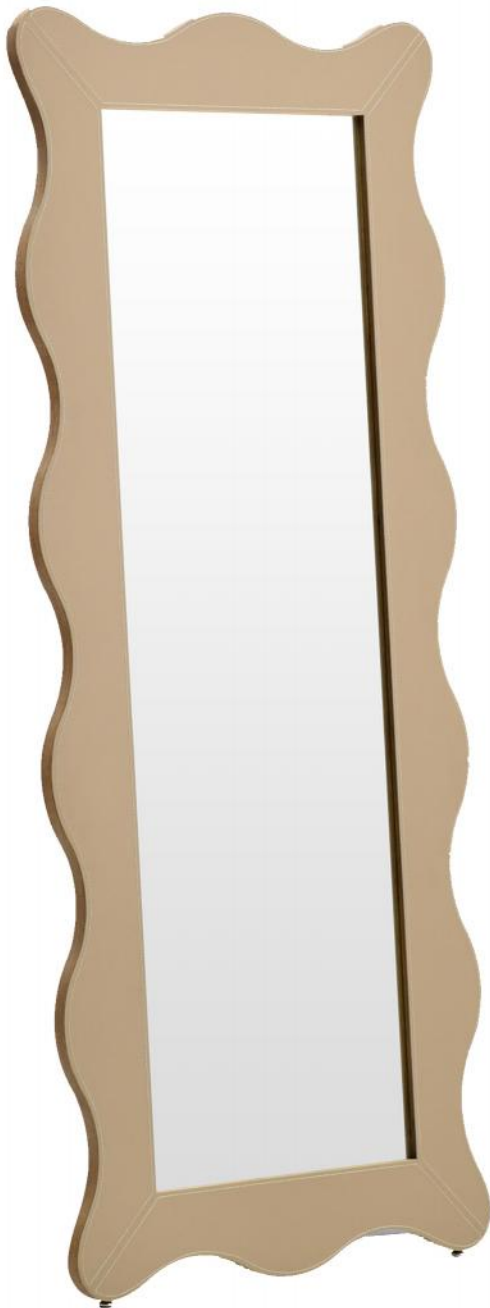


DD-2800

ERC-HI 而驰 AISUN



ERC-HI 而驰 AISUN



DF-8820

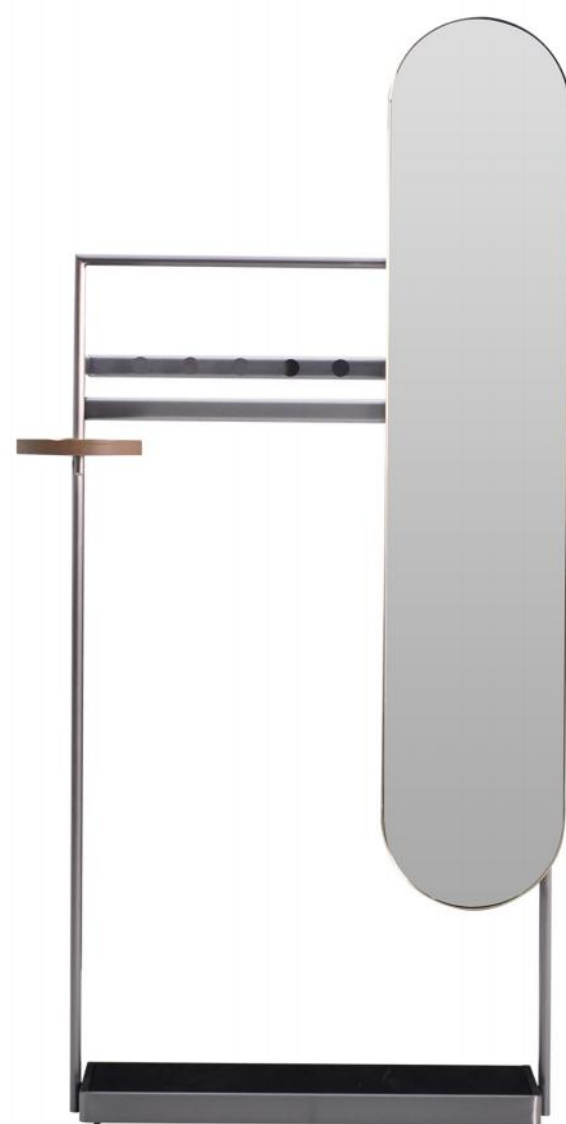


DF-6604



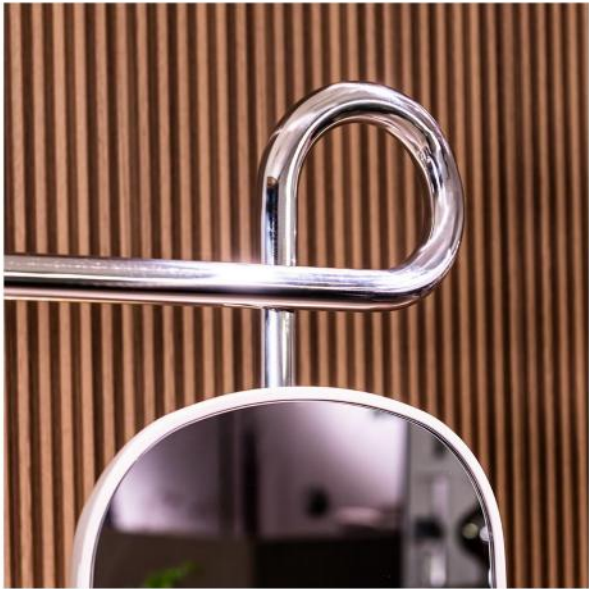


DF-8808

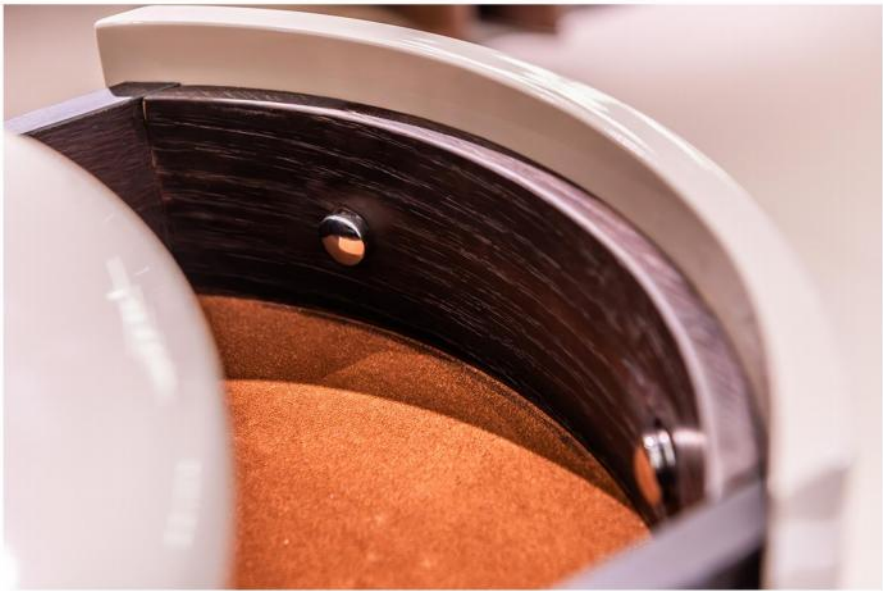


DF-2302





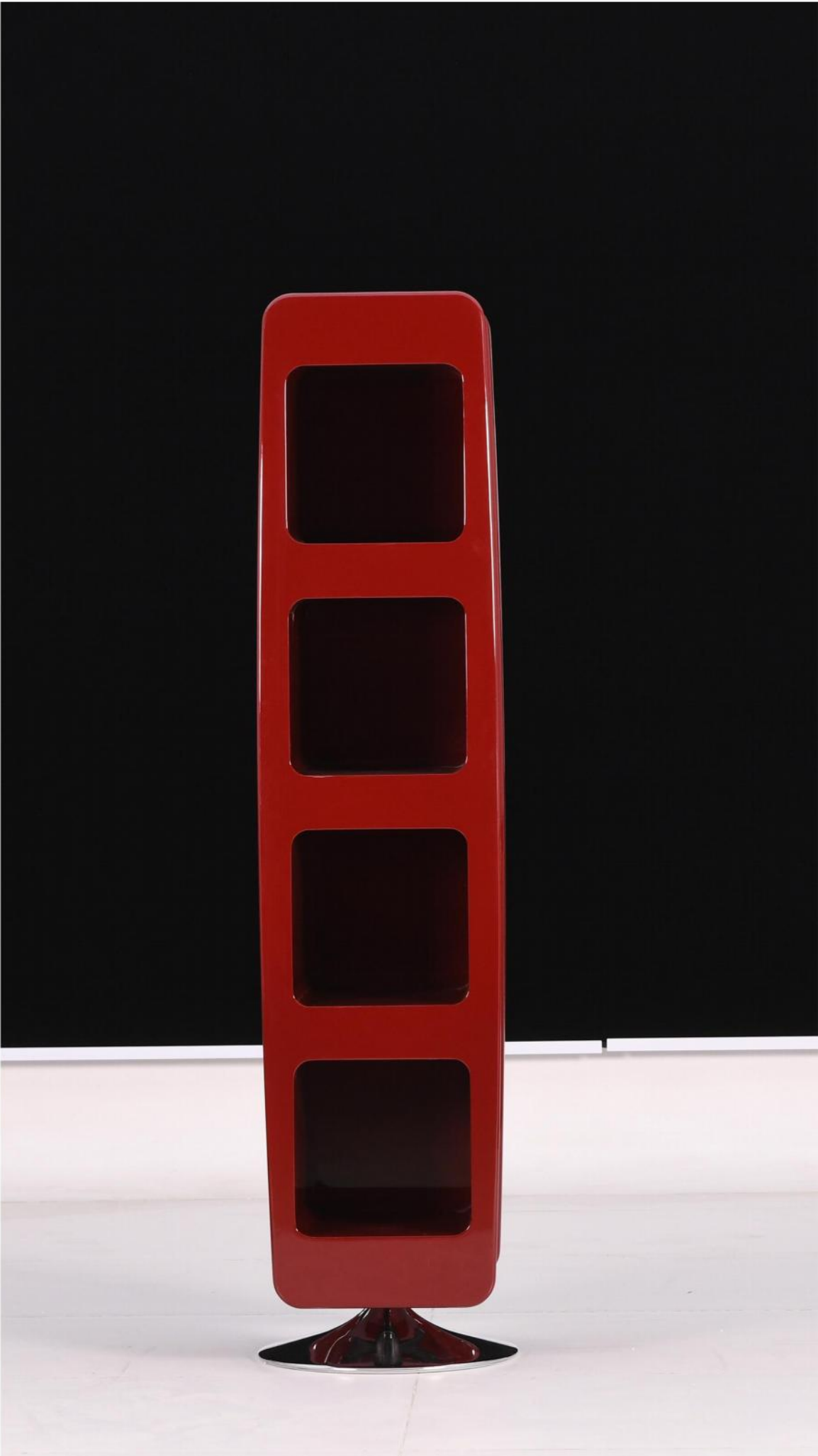
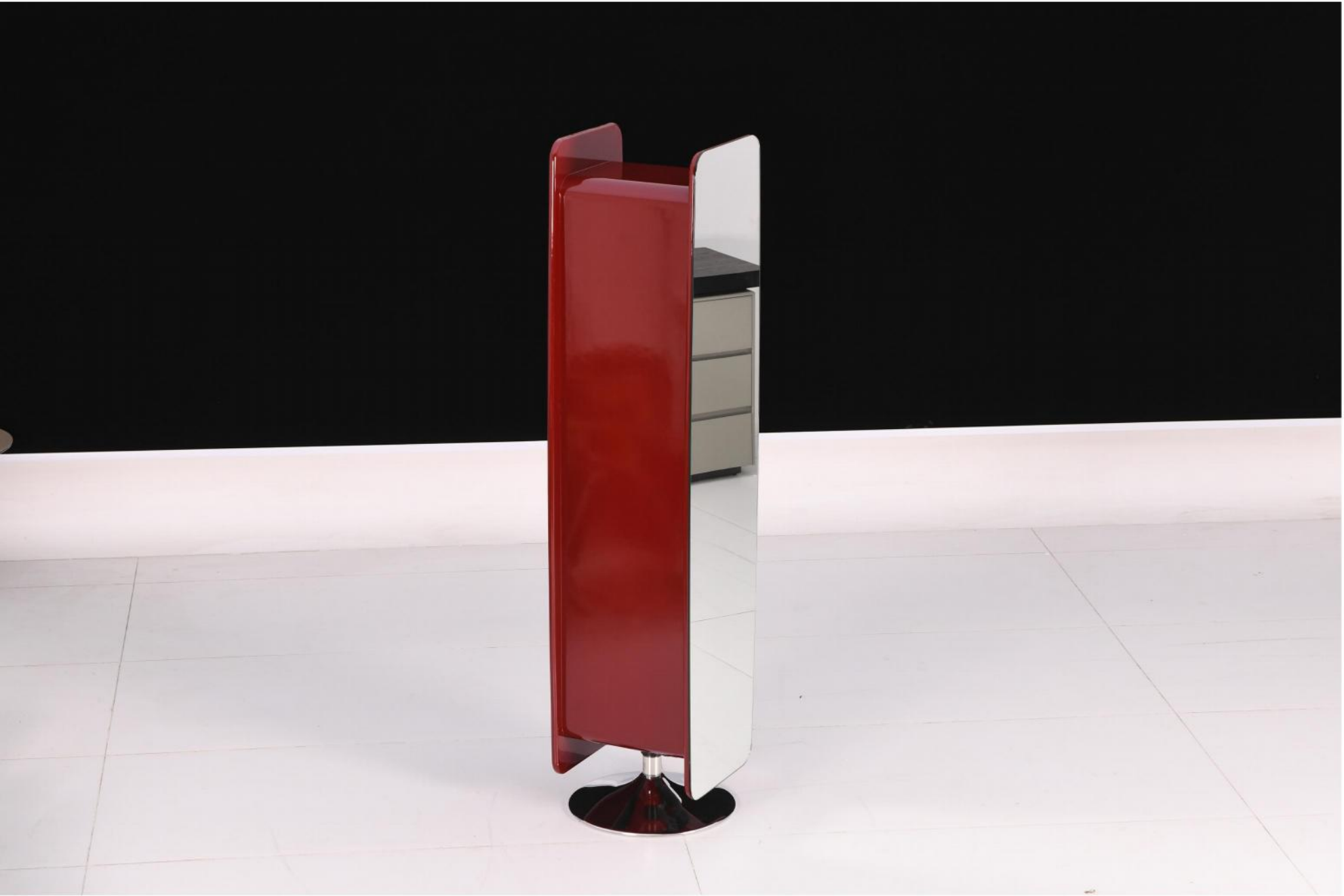
DF-8807





DF-6601





DF-8805



DF-6605





DF-6619



CLOAKROOM

FASHIONABLE & MINIMALIST.2025

FASHIONABLE & MINIMALIST.2025



DF-6622

ERC-HI 而馳 AISUN



DF-8829

A SINISTRA: DETTAGLIO DEL PANNELLO A PARETE IN NOBILITATO SKIN LACCATO OPACO 94 LATTE E DEL RIPIANO IN TECNOPELLE 05 LATTE CON TELAIO ARDESIA OPACO.SOTTO: DETTAGLIO DEL TUBO APPENDIABITI RIVESTITO IN TECNOPELLE 05 LATTE E ARDESIA OPACO, RIPIANO IN NOBILITATO ROVERE CENERE CON FRONTALE ARDESIAOPACO E LUCE LED INTEGRATA.

TO THE LEFT: CLOSE UP OF THE WALL MOUNTED PANEL IN 94 LATTE MAT LACQUEREDSKIN MELAMINE AND OF THE SHELF IN TECHNO LEATHER 05 LATTE WITH MATARDESIA FRAME. BELOW: CLOSE UP OF THE HANGING RAIL COVERED IN TECHNOLEATHER 05 LATTE AND MAT ARDESIA, SHELF IN CENERE OAK MELAMINE WITHMAT ARDESIA FRONT AND INTEGRATED LED LIGHT.





DZ-8824



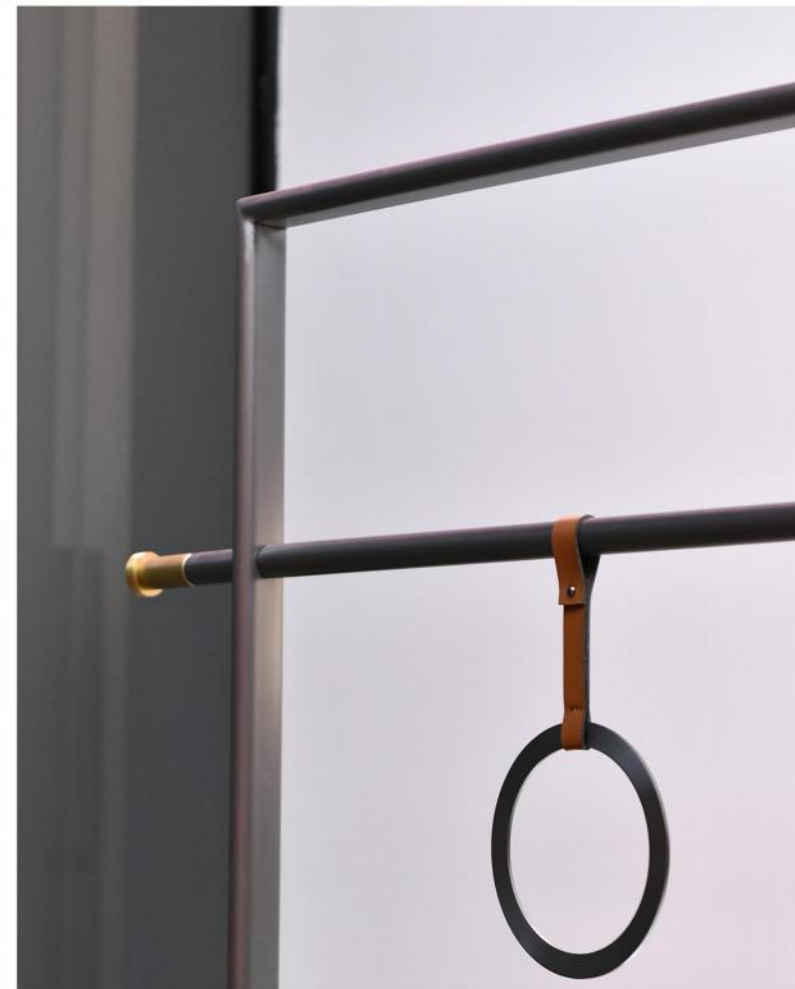
DF-6612

LA PERFEZIONE GEOMETRICA DEL CERCHIO INCONTRA L'ELEGANZA DELLACORNICE IN CUOIO: NASCE COSI CIRCLE, UNO SPECCHIO DA PARETE CHE-
ARREDA CON SEMPLICITÀ OGNI AMBIENTE.

THE GEOMETRIC PERFECTION OF THE CIRCLE MEETS THE ELEGANCE OFTHE HIDE FRAME: THUS RISES CIRCLE, A WALL MIRROR THAT FURNISHESANY
ENVIRONMENT WITH SIMPLICITY.

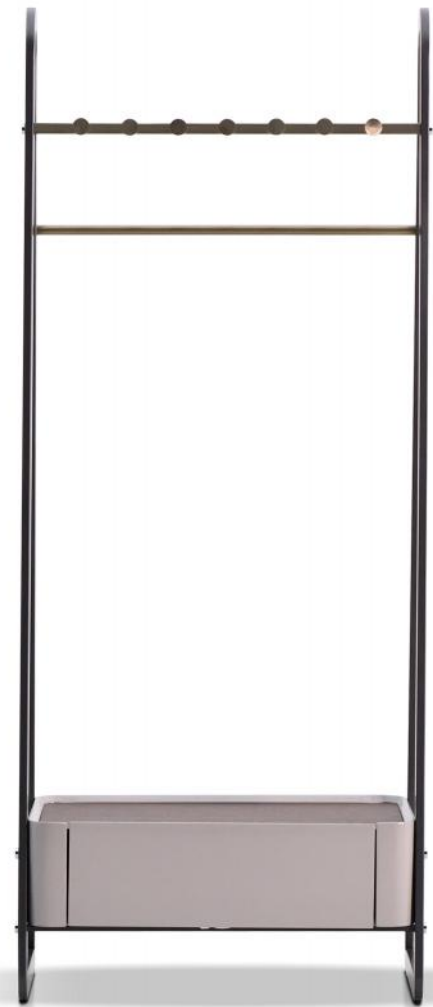


DF-2822



BAXTER YVES DESIGNED BY ROBERTO LAZZERONI IS A DRESSING TABLE, A DESK, A CONSOLE. THE IDEA BEHIND YVES IS TO CREATE A SIMPLE BUT MULTIFUNCTIONAL LINE, WITH SMALL DETAILS THE SAME PIECE OF FURNITURE TAKES ON THREE DIFFERENT IDENTITIES. THE STRUCTURE CAN BE CHOSEN IN SATIN-FINISH BRASS-PLATED METAL, HAND-BRUSHED BURNISHED METAL, OR SATIN NICKEL-PLATED METAL. THE STRUCTURE OF THE CLOAKROOM IS IN MDF COMPLETELY COVERED IN LEATHER.

THE DRESSING TABLE IS CHARACTERIZED BY A FLAP TOP WITH AN OVAL MIRROR, THE INTERNAL STRUCTURE OF THE COMPARTMENTS IS IN SHEET METAL COVERED IN LEATHER. THE DESK STANDS OUT FOR THE DRAWERS IN INDIA ROSEWOOD WITH A MATT FINISH AND SMALL DECORATIVE DETAILS IN METAL. THE CONSOLE, INSTEAD, HAS ONLY ONE LACQUERED DRAWER COMPARTMENT.



DF-8816





DF-6617

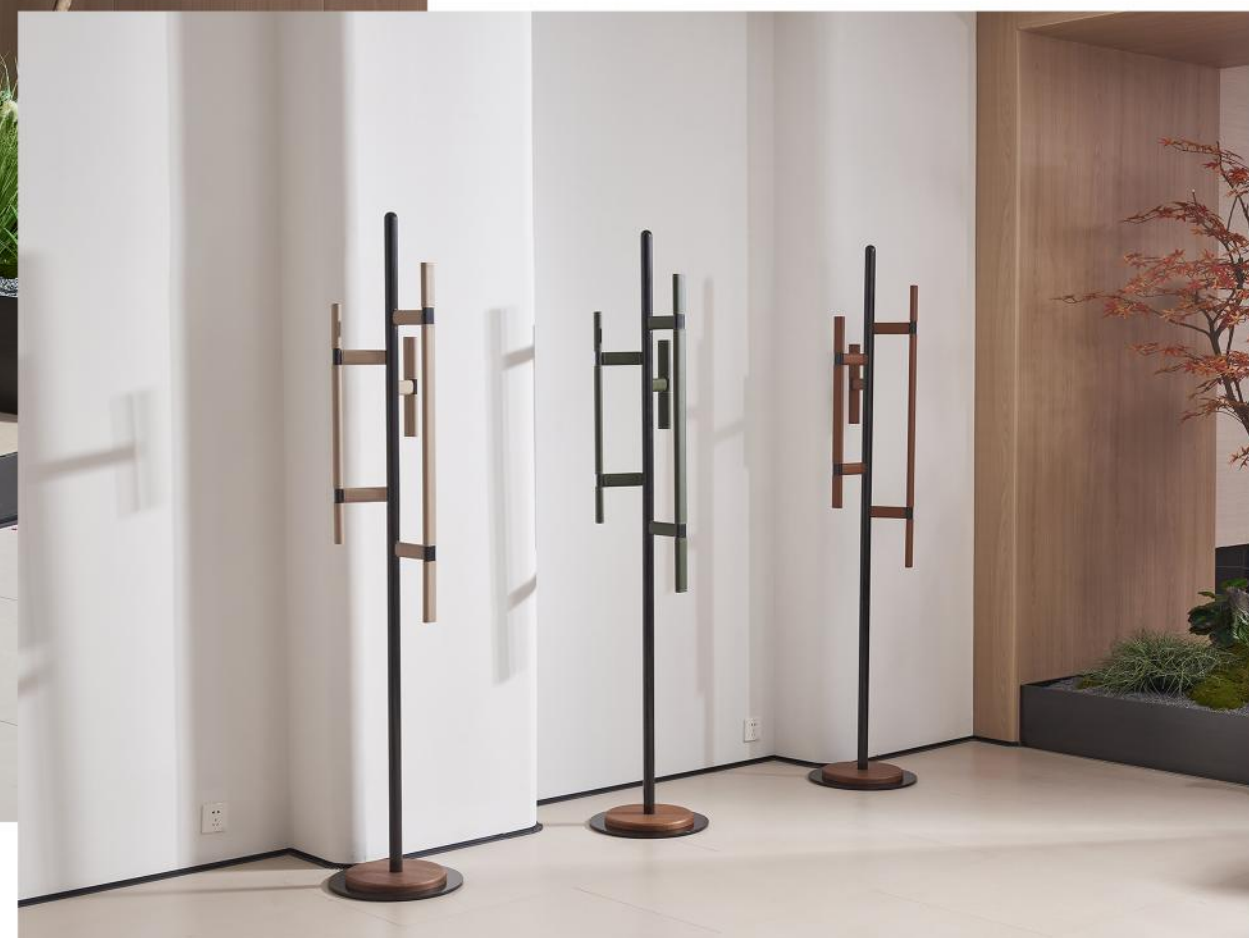


ERCHI 而馳 AISUN

LA PERFEZIONE GEOMETRICA DEL CERCHIO INCONTRA L'ELEGANZA DELLACORNICE IN CUOIO: NASCE COSI CIRCLE, UNO SPECCHIO DA PARETE CHEARREDA CON SEMPLICITÀ OGNI AMBIENTE.

THE GEOMETRIC PERFECTION OF THE CIRCLE MEETS THE ELEGANCE OFTHE HIDE FRAME: THUS RISES CIRCLE, A WALL MIRROR THAT FURNISHESANY ENVIRONMENT WITH SIMPLICITY.

DF-8818





DF-8829



DS-5511



DS-8803



DS-5513



DS-5514



DS-5515



DX-5510



DX-5508



DX-5513



DX-5518



DX-5512



DX-5516



DD-5513



DX-5517



DX-6606



DX-6609



DX-6608



DD-6604

CLOAKROOM

FASHIONABLE & MINIMALIST.2025

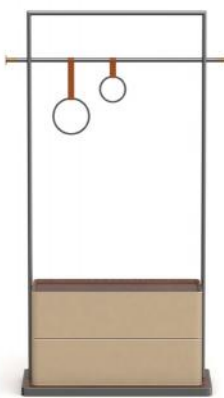
FASHIONABLE & MINIMALIST.2025



DF-2302



DF-2304



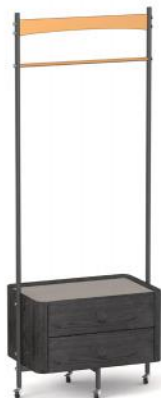
DF-2822



DF-5502



DF-5503A



DF-5503B



DF-5504



DF-6601A



DF-6601B



DF-6613



DF-6619



DF-6621



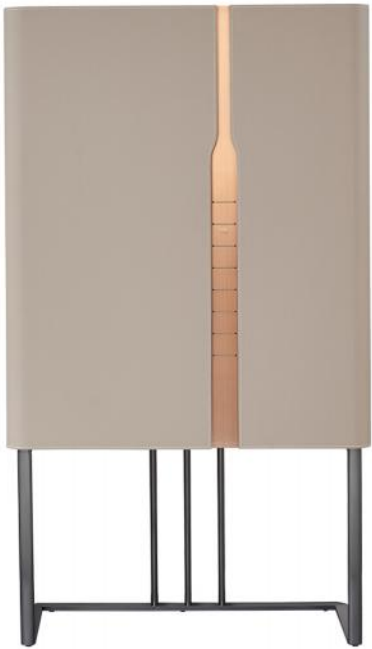
DF-8804



DF-8820



DF-8829



DD-1800



DD-2811



DX-8829



DD-2822



DD-8824A



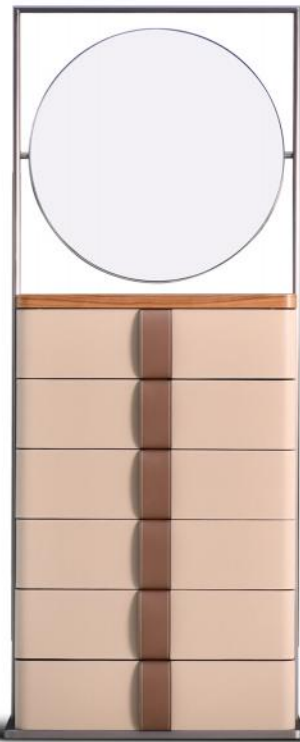
DD-8824B



DD-8824C



DD-8824D



DZ-8824



DD-8819



DD-8829



DH-2811



DQ-8824



DF-2822



DD-8816



DS-6617



DX-2822



DS-8818



DX-138



DX-8832



DF-6604



DF-8807



DD-8801



DF-8808



DF-6622



DF-6605



DD-5512



DL-6613



IN QUESTA PAGINA: COMODINO GENTLEMAN IN NOCE GOLD CON TOP IN LACCATO OPACO CHAMPAGNE, BASAMEN-
TO CON PIEDINI CHAMPAGNE OPACO.

THIS PAGE: GENTLEMAN COFFEE TABLE IN GOLD WALNUT WITH TOP IN MAT LAC-QUER CHAMPAGNE, BASE WITH
FEET IN MAT CHAMPAGNE.



DL-2301

IN QUESTA PAGINA: COMODINO GENTLEMAN IN NOCE GOLD CON TOP IN LACCATOOPACO CHAMPAGNE,BASAMEN-
TO CON PIEDINI CHAMPAGNE OPACO.

THIS PAGE: GENTLEMAN COFFEE TABLE IN GOLD WALNUT WITH TOP IN MAT LAC-QUERCHAMPAGNE,BASE WITH
FEET IN MAT CHAMPAGNE.

NIGHT STAND

FASHIONABLE & MINIMALIST.2025

FASHIONABLE & MINIMALIST.2025



DL-8804





DL-8805



THIS IS A UNIQUELY DESIGNED BEDSIDE TABLE WITH A RED BODY AND A DOUBLE-LAYERED CYLINDRICAL SHAPE WITH SMOOTH AND ROUNDED LINES. THE UPPER AND LOWER FLOORS ARE EQUIPPED WITH FLAT AND SIMPLE CABINET DOORS, WITH UNIFORM COLOR SCHEME AND GLOSSY TEXTURE. THE BOTTOM IS EQUIPPED WITH A LIGHT-COLORED PED-ESTAL, CONTRASTING WITH THE BRIGHT RED, SIMPLE AND FASHIONABLE, AND CAN BE EASILY INTEGRATED INTO THE BEDROOM SPACE OF MODERN, LIGHT LUXURY AND OTHER STYLES, WITH BOTH BEAUTY AND STORAGE FUNCTION.



DL-6610





DL-8813





DL-8807



NIGHT STAND

FASHIONABLE & MINIMALIST.2025

FASHIONABLE & MINIMALIST.2025



DL-8808



NIGHT STAND

FASHIONABLE & MINIMALIST.2025



E1 BOARD CABINET GLOSSY PAINT PROCESS

FASHIONABLE & MINIMALIST.2025



DL-8848



IN QUESTA PAGINA: COMODINO GENTLEMAN IN NOCE GOLD CON TOP IN LACCATOOPACO CHAMPAGNE, BASAMENTO CON PIEDINI CHAMPAGNE OPACO.

THIS PAGE: GENTLEMAN COFFEE TABLE IN GOLD WALNUT WITH TOP IN MAT LAC-QUERCHAMPAGNE, BASE WITH FEET IN MAT CHAMPAGNE.



DL-8817 POLIFORM ONDA BEDSIDE TABLE

IN QUESTA PAGINA: COMODINO GENTLEMAN IN NOCE
GOLD CON TOP IN LACCATOOPACO CHAMPAGNE,BASA-
MENTO CON PIEDINI CHAMPAGNE OPACO.

THIS PAGE: GENTLEMAN COFFEE TABLE IN GOLD WALNUT
WITH TOP IN MAT LAC-QUERCHAMPAGNE,BASE WITH FEET
IN MAT CHAMPAGNE.





DL-6614

IN QUESTA PAGINA: COMODINO GENTLEMAN IN NOCE GOLD CON TOP IN LACCATOOPACO CHAMPAGNE,BASAMENTO CON PIEDINI CHAMPAGNE OPACO.

THIS PAGE: GENTLEMAN COFFEE TABLE IN GOLD WALNUT WITH TOP IN MAT LAC-QUERCHAMPAGNE,BASE WITH FEET IN MAT CHAMPAGNE.

NIGHT STAND

FASHIONABLE & MINIMALIST.2025

FASHIONABLE & MINIMALIST.2025



DL-2301





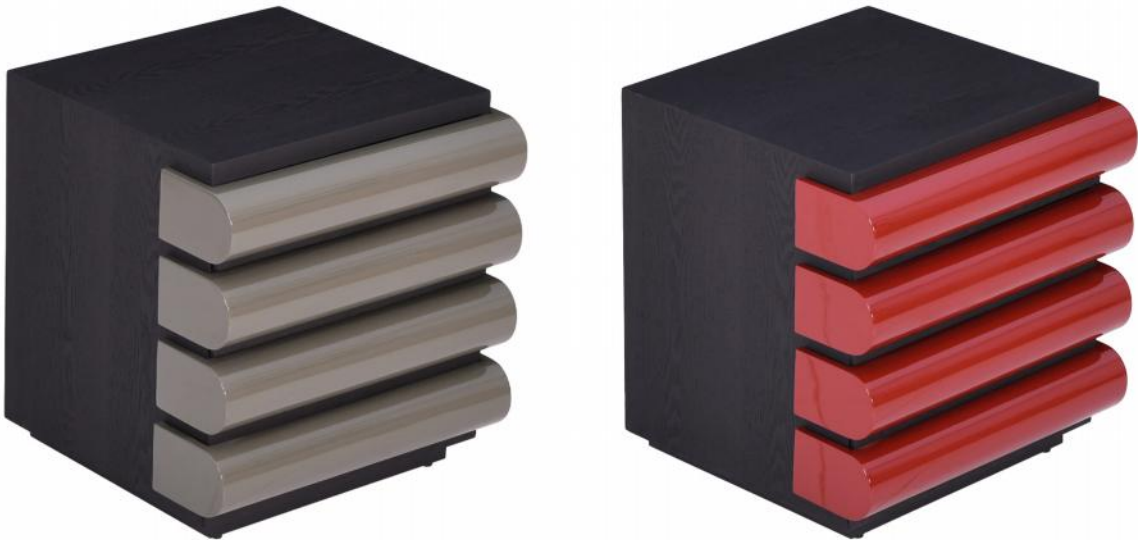
DL-5508



DL-5509



DL-8807



DL-5507



DL-8827



DL-660



DL9915



DL-9916



DL-8816



DL-8819



EC-N008



EC-N007



DL-6619-1



DL-6616



DL-8839



DL-8840



DL-8811



DL-8819



DL-8824



DL-6615



DL-8841



DL-6617B



EC-N001



EC-N005



EC-N002



EC-N003



EC-N004



EC-N006



CG-1168



DL-6603B



DL-8808



DL-2303



DL-2308



DL-2308



DL-8831



DL-8831