

FASHIONABLE & MINIMALIST

ERC-HI 而驰

TABLE

COFFEE TABLE/DESK/DINING TABLE



ERC-HI 而驰



FOSHAN ZHIDE HOUSE FURNITURE CO., LTD

M:+86-13927742036

WHATSAPP:+86-13927742036 WECHAT:+86-13927742036

P:+86-757-23376869 F:+86-757-2337686

WEBSITE:WWW.ERCHIFURNITURE.COM EMAIL:ADMIN@ERCHIFURNITURE.COM

ADD:SECOND FLOOR, GUANGHUA STREET, XIXI COMMUNITY, LONGJIANG TOWN, SHUNDE DISTRICT, FOSHAN CITY

ERC-HI 而驰
-AISUN-

COMPANY PROFILE



ERCHI FURNITURE IS THE MAIN BRAND PROMOTED BY ZHIDE FURNITURE GROUP. SINCE ITS ESTABLISHMENT IN 2006, IT HAS EMERGED IN THE FURNITURE MARKET WITH ITS UNIQUE DESIGN CONCEPT, EXCELLENT QUALITY AND UNREMITTING PURSUIT OF INNOVATION. WITH THE STRONG SUPPORT OF THE GROUP, ERCHI FURNITURE IS EXTREMELY STRICT IN THE SELECTION OF RAW MATERIALS. IT CAREFULLY SELECTS EACH MATERIAL TO ENSURE THE QUALITY AND SUSTAINABILITY OF PRODUCTS. PURCHASING MOST OF THE RAW MATERIALS, PACKAGING AND SEMI-FINISHED PRODUCTS FROM NEARBY SUPPLIERS NOT ONLY ENSURES THE STABILITY OF SUPPLY, BUT ALSO LAYS A SOLID FOUNDATION FOR THE QUALITY COMMITMENT OF "MADE IN FOSHAN".

IN TERMS OF DESIGN, ERCHI FURNITURE HAS A PROFESSIONAL INTERNAL R & D DEPARTMENT, WHICH COMBINES CREATIVITY WITH UNIQUE DESIGN EXPERTISE AND CONTINUOUS EXPLORATION OF NEW MATERIALS, TECHNOLOGIES AND PROCESSES TO CONTINUOUSLY INTRODUCE NEW PRODUCTS. ITS DESIGN NOT ONLY PAYS ATTENTION TO THE BALANCE OF FASHION SENSE AND PRACTICABILITY, BUT ALSO CAN MEET THE INDIVIDUALIZED NEEDS OF DIFFERENT CONSUMERS. WHETHER IT IS MODERN MINIMALIST STYLE OR ITALIAN LIGHT LUXURY STYLE, ERCHI FURNITURE CAN PRESENT A DIFFERENT CHARM WITH EXQUISITE CRAFTSMANSHIP AND UNIQUE DESIGN. ERCHI FURNITURE'S PRODUCTS COVER MULTIPLE SERIES, INCLUDING LIVING ROOM SPACE, DINING ROOM SPACE, CLOAKROOM, BEDROOM SPACE AND TEA ROOM SPACE. IN RECENT YEARS, THE CUSTOMIZED SUPPORTING SERVICES PROVIDED BY ERCHI FURNITURE HAVE BEEN HIGHLY PRAISED BY NEW AND OLD CUSTOMERS. ITS PRODUCTS ARE NOT ONLY POPULAR IN THE DOMESTIC MARKET, BUT ALSO EXPORTED TO MANY COUNTRIES AND REGIONS, OCCUPYING AN IMPORTANT POSITION IN THE INTERNATIONAL MARKET. NOWADAYS, THE FOREIGN MARKET ACCOUNTS FOR ABOUT 70% OF THE COMPANY'S REVENUE, FULLY DEMONSTRATING ITS INTERNATIONAL INFLUENCE. ERCHI FURNITURE IS KNOWN FOR ITS UNIQUE AND EXCLUSIVE HIGH-QUALITY PRODUCTS. MOST OF THE DESIGNS ARE COMPLETED EXCLUSIVELY BY ITSELF. EVEN REPLICAS ARE OFTEN DIFFERENT. IT CONTINUOUSLY SURPASSES OTHER PRODUCTS IN TERMS OF QUALITY AND DURABILITY. IT IS DIFFICULT FOR YOU TO FIND PRODUCTS OF THE SAME QUALITY ELSEWHERE, WHICH ALSO MAKES ERCHI FURNITURE A SYMBOL OF QUALITY AND TASTE IN THE HEARTS OF CONSUMERS. IN THE FUTURE, IT IS BELIEVED THAT ERCHI FURNITURE WILL CONTINUE TO ADHERE TO THE CONCEPTS OF INNOVATION, QUALITY AND DESIGN, BRING MORE STUNNING FURNITURE WORKS TO CONSUMERS, AND LEAD THE DEVELOPMENT TREND OF THE FURNITURE INDUSTRY.





ERC-HI 而驰 AISUN



DT-6622A



DT-6622B



DT-6624





DT-8820



DT-6604

ERC- 而馳 AISUN

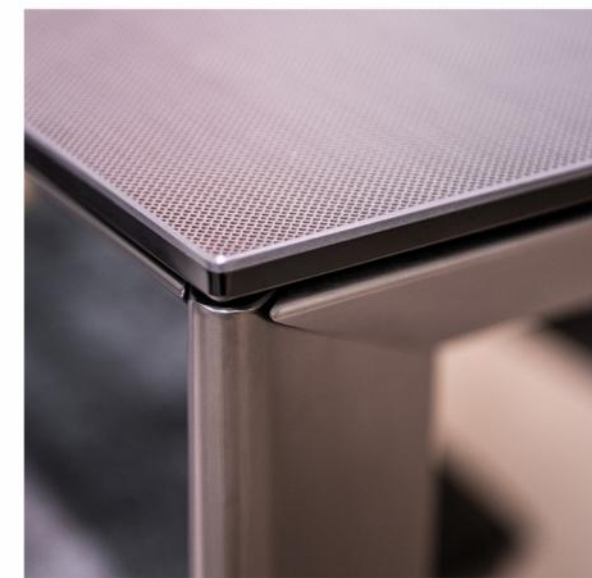




DT-8842

ERC-而馳 AISUN

DY-8842





DT-6626B

ERC-而 AISUN









DT-8832



天然大理石餐桌

VSTEC-DT-6613-180



DT-6613



DT-6615

ERCHI 而馳 AISUN







DT-8852

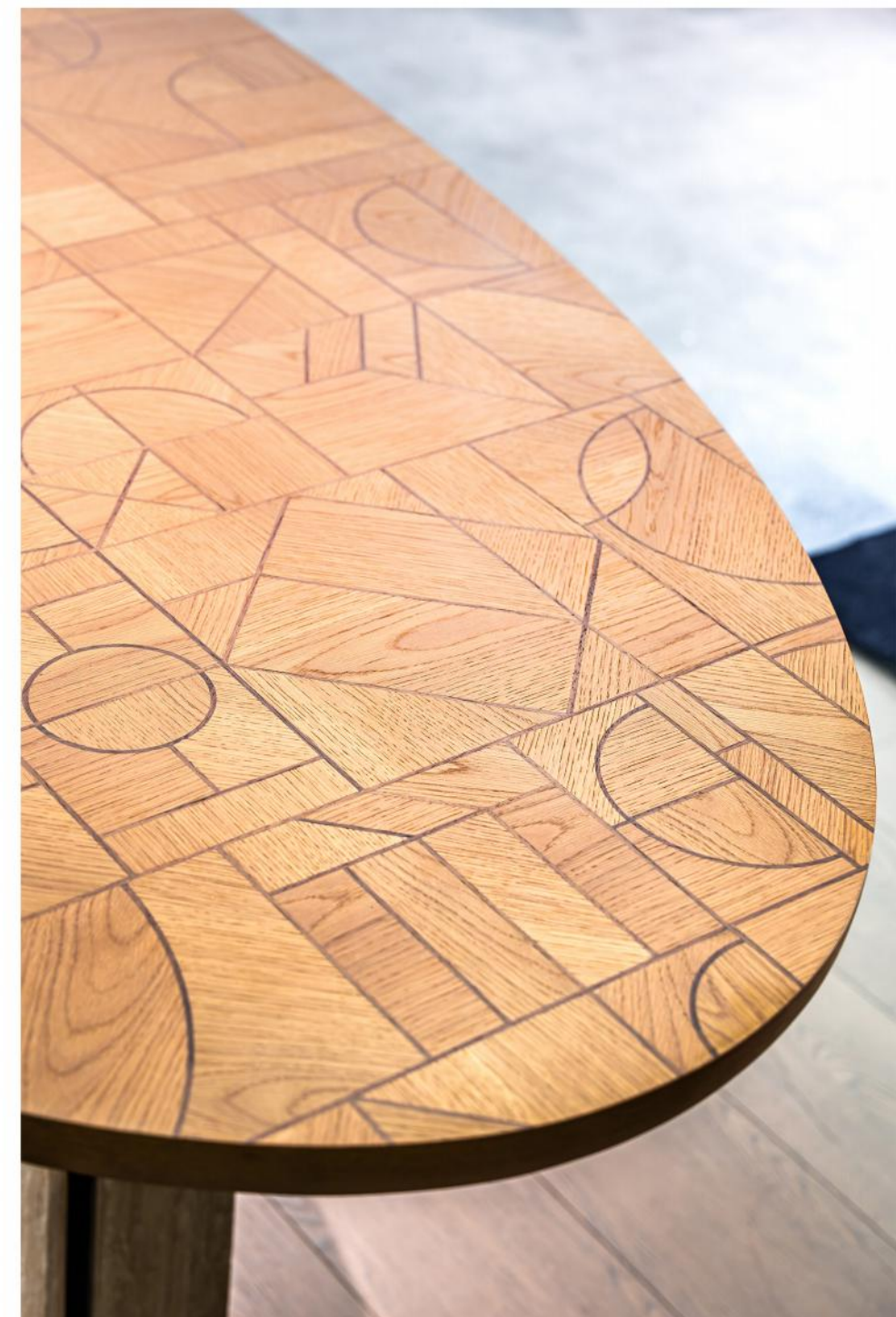


DT-5515

ERCHE 而馳 AISUN

DT-5506

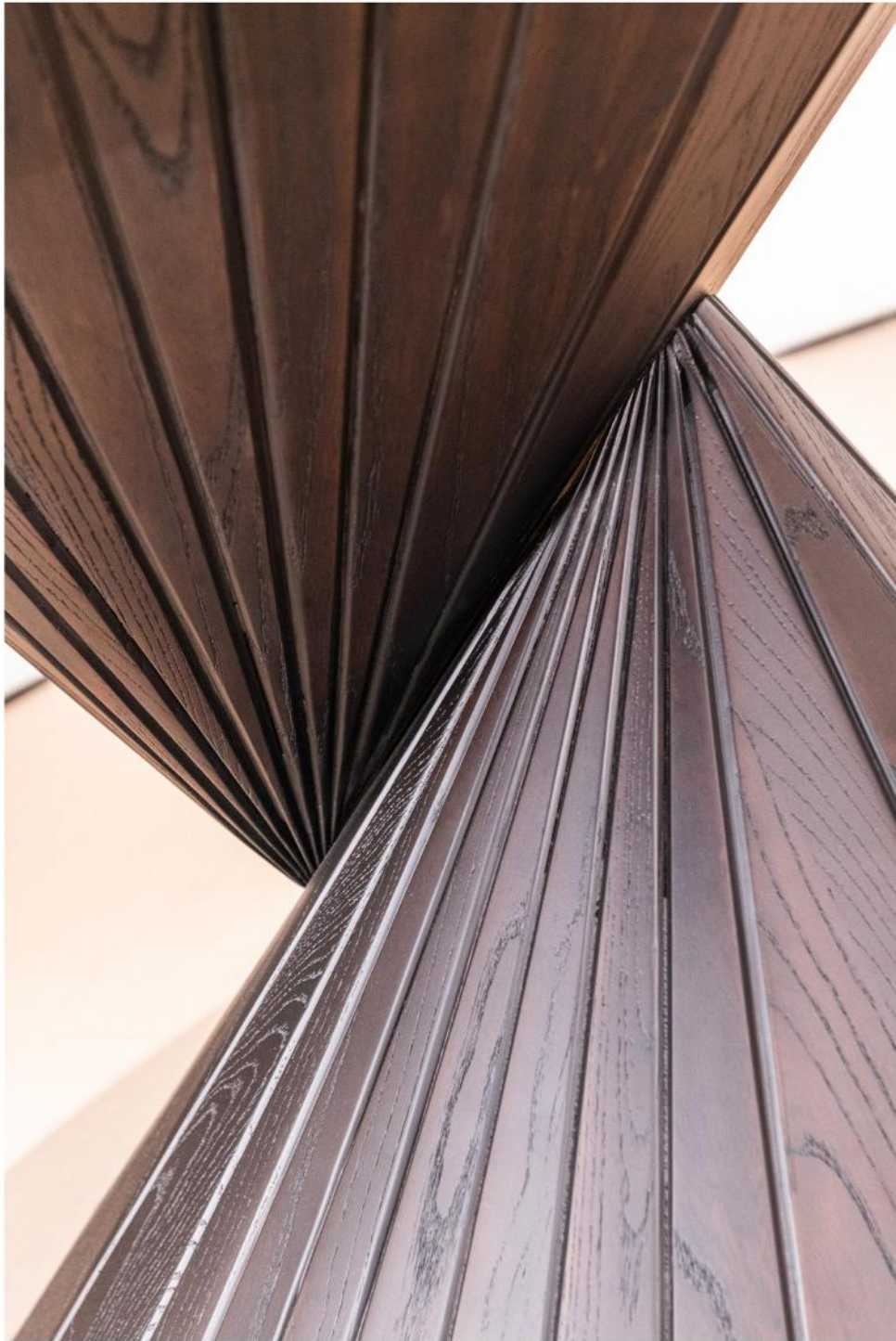




DT-5521

ERCHI 而馳 AISUN



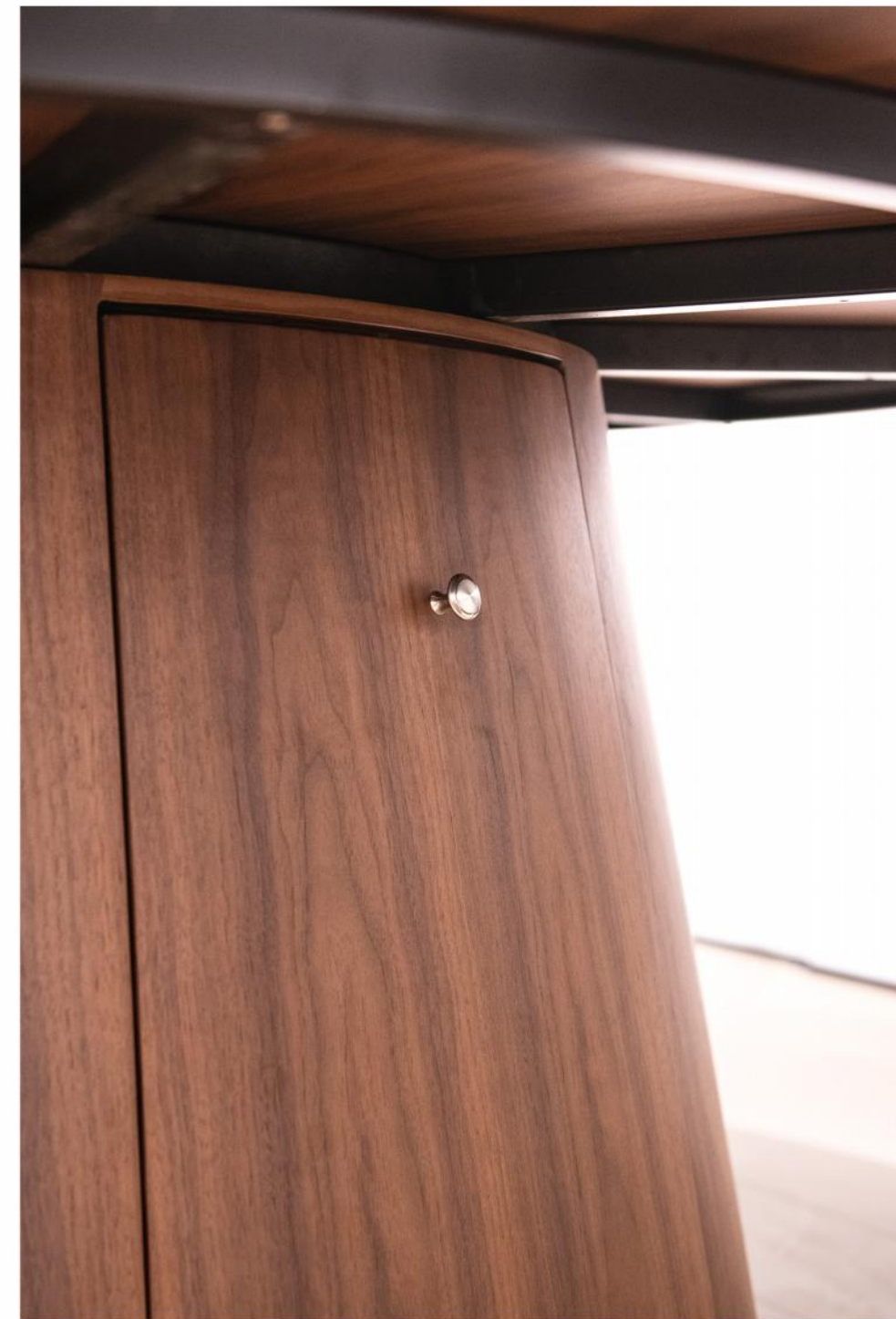


DT-5518

ERC-HI 而驰 AISUN

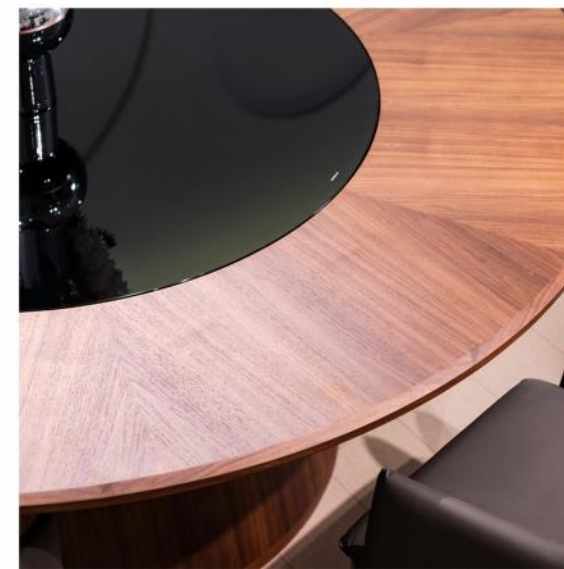
DY-5513





DT-6606

ERC-而 AISUN





DT-6627

ERCHE 而驰 AISUN

DY-8810B



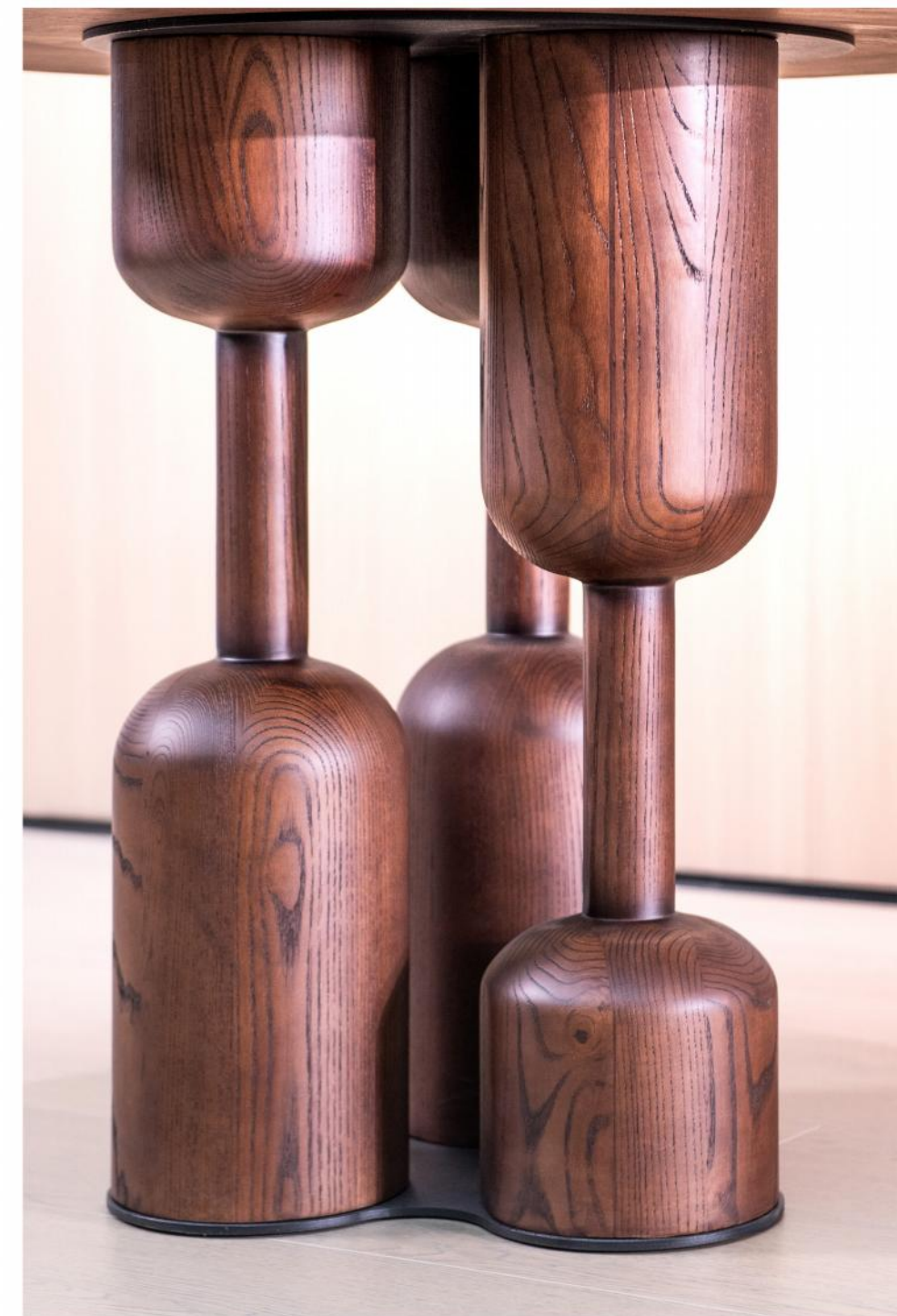


DT-6627

DINING TABLE

FASHIONABLE & MINIMALIST.2025

FASHIONABLE & MINIMALIST.2025



DT-5517

ERCHE 而驰 AISUN

DY-5507





DT-5522





DT-5520





DT-2305



DW-6608

DINING TABLE

FASHIONABLE & MINIMALIST.2025

FASHIONABLE & MINIMALIST.2025



DT-6610



DT-8805

DT-8808



DT-8810B



DT-8824







DH-2303



DH-8816



DH-5509



DT-8829



DT-6615



DT-8803

DINING TABLE

FASHIONABLE & MINIMALIST.2025

FASHIONABLE & MINIMALIST.2025



DT-5515



DT-2844



DT-8854



DT-6627

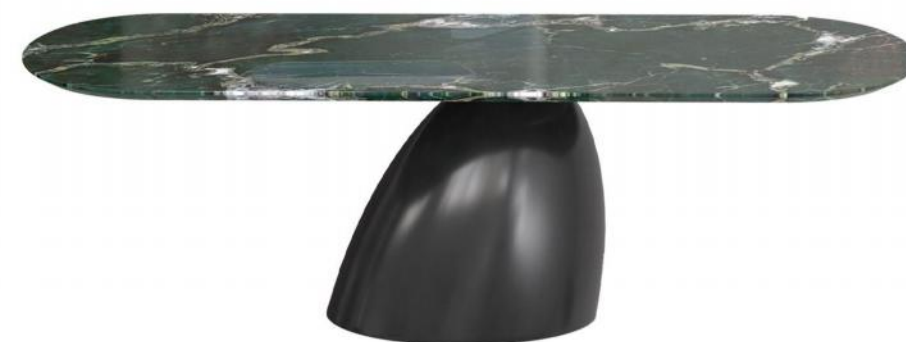
DINING TABLE

FASHIONABLE & MINIMALIST.2025

FASHIONABLE & MINIMALIST.2025



DT-8843



DT-6613



DT-8819



DT-6630



DT-5522



DT-5521

KILLI·库里

一件好的家居不仅是一件物品也是一款艺术品
A good home is not only an object but also a work of art





DC-8852



DC-8858



DC-8858

36MM STICKER MARBLE AVOCADO GREEN
E1 GRADE SHEET NATURAL WHITE OAK VENEER CARBON STEEL BOTTOM FRAME

E1 GRADE PLATE SOLID COLOR PAINT
E1 GRADE PLATE SOLID COLOR PAINT CARBON STEEL BOTTOM FRAME





DC-8863





DC-8862



DC-8859A





DC-5519





DC-5518

DJ-5515



FLOOR SAMPLE SKYLINE COFFEE TABLE FROM GIORGETTI DESIGNED BY CARLO COLOMBO



DC-6604

FINISHES: SKYLINE COFFEE TABLE , TOP IN ASH-STAINED WALNUT VENEER AND SADDLE LEATHER , BRUSHED GREY STAINLESS STEEL BASE WITH TEMPERED GLASS.

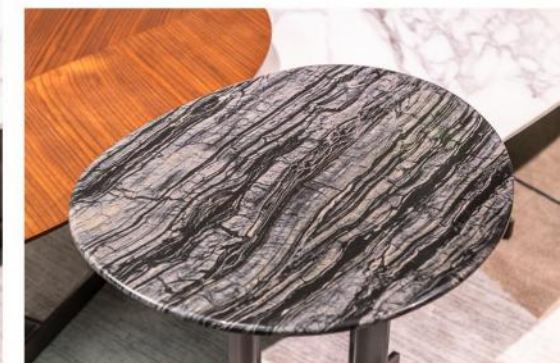
ROUND, SQUARE, RECTANGULAR AND PENTAGONAL LOW TABLE IN METAL PEWTER FINISHED, WITH TOP AVAILABLE IN DIFFERENT MATERIALS.





DC-6627





ERCHI 而馳 AISUN

IN QUESTA PAGINA: COMODINO GENTLEMAN IN NOCE GOLD CON TOP IN LACCATOOPACO CHAMPAGNE,BASAMENTO CON PIEDINI CHAMPAGNE OPACO.

THIS PAGE: GENTLEMAN COFFEE TABLE IN GOLD WALNUT WITH TOP IN MAT LAC-QUERCHAMPAGNE,BASE WITH FEET IN MAT CHAMPAGNE.

DC-8817



COFFEE TABLE

FASHIONABLE & MINIMALIST.2025

FASHIONABLE & MINIMALIST.2025



FINISHES: SKYLINE COFFEE TABLE , TOP
IN ASH-STAINED WALNUT VENEER AND
SADDLE LEATHER , BRUSHED GREY
STAINLESS STEEL BASE WITH TEMPERED
GLASS.

ROUND, SQUARE, RECTANGULAR AND
PENTAGONAL LOW TABLE IN METAL
PEWTER FINISHED, WITH TOP AVAILABLE
IN DIFFERENT MATERIALS.



DC-6605 大 , DJ-6609 小



DRAKE COFFEE TABLES FROM MINOTTI DESIGN BY HANNES PEER



DC-6616

THE DRAKE COFFEE TABLES STAND OUT FOR THE REFINED BALANCE BETWEEN THE USE OF A SINGLE MATERIAL - MARBLE, WOOD OR GLOSSY LACQUER - AND THE SENSATION OF LIGHTNESS EXPRESSED BY THE TOP, SUSPENDED BETWEEN THE LEGS.

AN EFFECT CREATED BY THE UNION OF DIFFERENT ELEMENTS THAT MEET IN A DYNAMIC INTERPLAY OF FORM AND FUNCTION: THE LEGS ARE THICKER THAN THE TOP - BOTH WITH ROUNDED EDGES - HIGHLIGHTING THIS UNPRECEDENTED EXPRESSION OF LIGHTNESS.

A FAMILY OF COFFEE TABLES AND CONSOLE TABLES IN DIFFERENT SHAPES AND SIZES, IDEAL FOR COMPLEMENTING CONTEMPORARY LIVING SPACES.





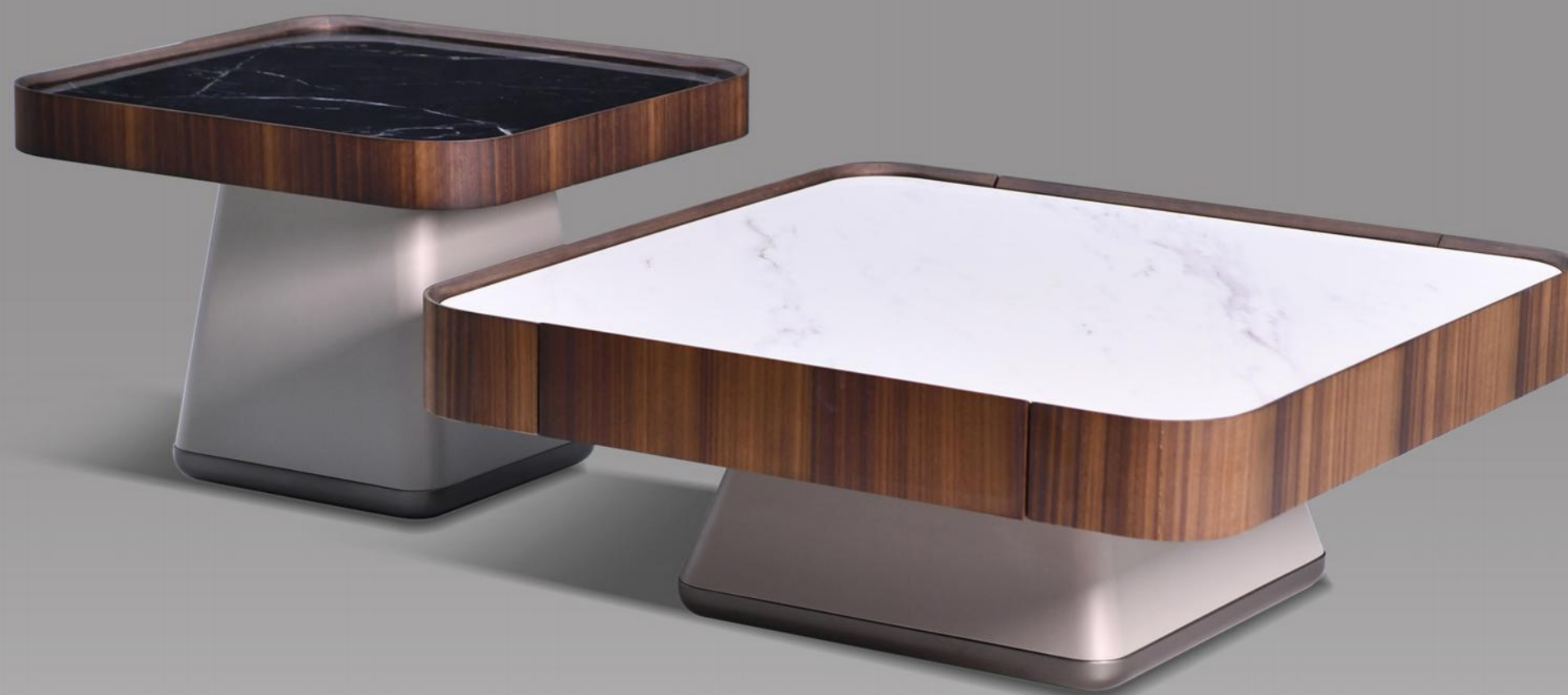
DC-8853

DJ-8853





DC-8811



极简组合茶几

VSTKL-DC-8832-138-56



DC-8832 DJ-8832



DC-6633

圆形茶几

VSTKL-DC-8850-100



DC-8850





DC-8814B

ERC-AISUN

CURVED HONEYCOMB PLYWOOD. UPPER AND LOWER TOPS IN MDF. THE CIRCULAR, 65 CM UPPER TABLE TOP IS COMPLETELY ENCASED IN A METAL SHEET. THE 139 CM SURFACE OF THE UPPER TABLE TOP IS IN THE SAME FINISH AS THAT CHOSEN FOR THE ELLIPTICAL BASE. A METAL SHEET BORDER FINISHES THE EDGE OF THE LOWER TOP. THE 65 CM UPPER TABLE TOP IS FIXED IN PLACE, WHILE THE UPPER TOP OF THE 139 CM TABLE TURNS 360° CLOCKWISE AND COUNTERCLOCKWISE. PROTECTIVE FELT GLIDES.

LOWER ELLIPTICAL BASE IN COMPOSITE EBONY VENEER WITH GLOSSY TRANSPARENT POLYESTER FINISH; UPPER CIRCULAR TOP IS IN SATIN-FINISH METAL WITH BRONZE PAINT FINISH. SINCE THE SATIN FINISH IS HANDCRAFTED, THE UPPER TOP MAY EXHIBIT SLIGHTLY DIFFERENT NUANCES; LOWER ELLIPTICAL BASE WITH GLOSSY MOKA LACQUER FINISH; UPPER CIRCULAR TOP IS IN METAL WITH BRIGHT GOLD-PLATED FINISH (ELECTROPLATE).



ERC-而 AISUN



DC-138

CURVED HONEYCOMB PLYWOOD. UPPER AND LOWER TOPS IN MDF. THE CIRCULAR, 65 CM UPPER TABLE TOP IS COMPLETELY ENCASED IN A METAL SHEET. THE 139 CM SURFACE OF THE UPPER TABLE TOP IS IN THE SAME FINISH AS THAT CHOSEN FOR THE ELLIPTICAL BASE. A METAL SHEET BORDER FINISHES THE EDGE OF THE LOWER TOP. THE 65 CM UPPER TABLE TOP IS FIXED IN PLACE, WHILE THE UPPER TOP OF THE 139 CM TABLE TURNS 360° CLOCKWISE AND COUNTERCLOCKWISE. PROTECTIVE FELT GLIDES.

LOWER ELLIPTICAL BASE IN COMPOSITE EBONY VENEER WITH GLOSSY TRANSPARENT POLYESTER FINISH; UPPER CIRCULAR TOP IS IN SATIN-FINISH METAL WITH BRONZE PAINT FINISH. SINCE THE SATIN FINISH IS HANDCRAFTED, THE UPPER TOP MAY EXHIBIT SLIGHTLY DIFFERENT NUANCES; LOWER ELLIPTICAL BASE WITH GLOSSY MOKA LACQUER FINISH; UPPER CIRCULAR TOP IS IN METAL WITH BRIGHT GOLD-PLATED FINISH (ELECTROPLATE).



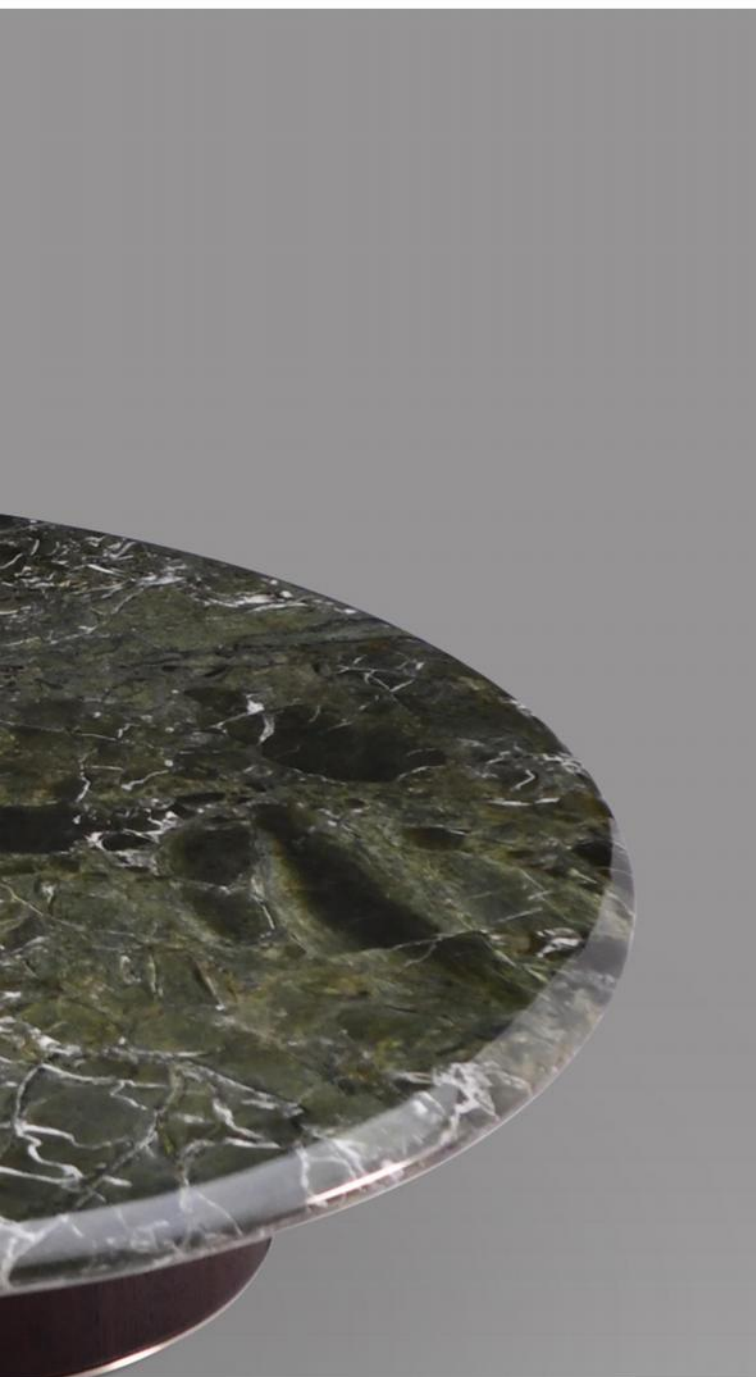


TO CREATE THESE COFFEE TABLES, ARCHITECT MAURO LIPPARINI FOCUSED ON A MINIMALIST DESIGN AND COMBINED THE BOLD GEOMETRIC SHAPE OF THE METAL SUPPORT WITH THE CURVED CONTOURS OF THE TOPS, AVAILABLE IN A VARIETY OF FINISHES, CREATING A FORMAL CONTRAST EXPRESSED WITH THE UTMOST LIGHTNESS. THEY ARE PERFECT EITHER POSITIONED IN THE MIDDLE OF THE ROOM OR TO THE SIDE OF THE SOFA.



DC-8816

DJ-8816



ERC-而 AISUN

CURVED HONEYCOMB PLYWOOD. UPPER AND LOWER TOPS IN MDF. THE CIRCULAR, 65 CM UPPER TABLE TOP IS COMPLETELY ENCASED IN A METAL SHEET. THE 139 CM SURFACE OF THE UPPER TABLE TOP IS IN THE SAME FINISH AS THAT CHOSEN FOR THE ELLIPTICAL BASE. A METAL SHEET BORDER FINISHES THE EDGE OF THE LOWER TOP. THE 65 CM UPPER TABLE TOP IS FIXED IN PLACE, WHILE THE UPPER TOP OF THE 139 CM TABLE TURNS 360° CLOCKWISE AND COUNTERCLOCKWISE. PROTECTIVE FELT GLIDES.



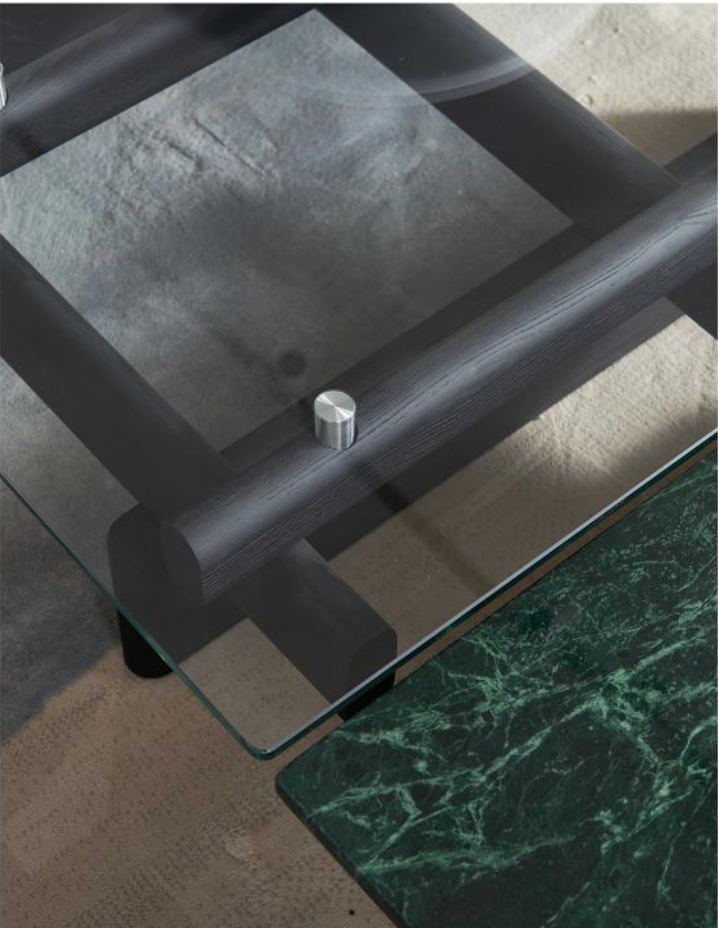
DC-6630A

DC-6630B



ERCHI 而馳 AISUN

CURVED HONEYCOMB PLYWOOD. UPPER AND LOWER TOPS
IN MDF. THE CIRCULAR, 65 CM UPPER TABLE TOP IS COM-
PLETELY ENCASED IN A METAL SHEET. THE 139 CM SURFACE
OF THE UPPER TABLE TOP IS IN THE SAME FINISH AS THAT
CHOSEN FOR THE ELLIPTICAL BASE. A METAL SHEET
BORDER FINISHES THE EDGE OF THE LOWER TOP. THE 65
CM UPPER TABLE TOP IS FIXED IN PLACE, WHILE THE
UPPER TOP OF THE 139 CM TABLE TURNS 360° CLOCKWISE
AND COUNTERCLOCKWISE. PROTECTIVE FELT GLIDES.



DC-8847

COFFEE TABLE

FASHIONABLE & MINIMALIST.2025



FASHIONABLE & MINIMALIST.2025



DC-8836A

DC-8836B

CURVED HONEYCOMB PLYWOOD. UPPER AND LOWER TOPS IN MDF. THE CIRCULAR, 65 CM UPPER TABLE TOP IS COMPLETELY ENCASED IN A METAL SHEET. THE 139 CM SURFACE OF THE UPPER TABLE TOP IS IN THE SAME FINISH AS THAT CHOSEN FOR THE ELLIPTICAL BASE. A METAL SHEET BORDER FINISHES THE EDGE OF THE LOWER TOP. THE 65 CM UPPER TABLE TOP IS FIXED IN PLACE, WHILE THE UPPER TOP OF THE 139 CM TABLE TURNS 360° CLOCKWISE AND COUNTERCLOCKWISE. PROTECTIVE FELT GLIDES.



DC-8837A DC-8837B DC-8837C

CURVED HONEYCOMB PLYWOOD. UPPER AND LOWER TOPS IN MDF. THE CIRCULAR, 65 CM UPPER TABLE TOP IS COMPLETELY ENCASED IN A METAL SHEET. THE 139 CM SURFACE OF THE UPPER TABLE TOP IS IN THE SAME FINISH AS THAT CHOSEN FOR THE ELLIPTICAL BASE. A METAL SHEET BORDER FINISHES THE EDGE OF THE LOWER TOP. THE 65 CM UPPER TABLE TOP IS FIXED IN PLACE, WHILE THE UPPER TOP OF THE 139 CM TABLE TURNS 360° CLOCKWISE AND COUNTERCLOCKWISE. PROTECTIVE FELT GLIDES.

COFFEE TABLE

FASHIONABLE & MINIMALIST.2025



CURVED HONEYCOMB PLYWOOD. UPPER AND LOWER
TOPS IN MDF. THE CIRCULAR, 65 CM UPPER TABLE TOP IS
COMPLETELY ENCASED IN A METAL SHEET. THE 139 CM
SURFACE OF THE UPPER TABLE TOP IS IN THE SAME
FINISH AS THAT CHOSEN FOR THE ELLIPTICAL BASE. A
METAL SHEET BORDER FINISHES THE EDGE OF THE LOWER
TOP. THE 65 CM UPPER TABLE TOP IS FIXED IN PLACE,
WHILE THE UPPER TOP OF THE 139 CM TABLE TURNS 360°
CLOCKWISE AND COUNTERCLOCKWISE. PROTECTIVE FELT
GLIDES.



DC-6607

极简茶几组合

VSTKL-DC-8816-147-50



DC-8816 DJ-8816



DC-8820



CURVED HONEYCOMB PLYWOOD. UPPER AND LOWER TOPS IN MDF. THE CIRCULAR, 65 CM UPPER TABLE TOP IS COMPLETELY ENCASED IN A METAL SHEET. THE 139 CM SURFACE OF THE UPPER TABLE TOP IS IN THE SAME FINISH AS THAT CHOSEN FOR THE ELLIPTICAL BASE. A METAL SHEET BORDER FINISHES THE EDGE OF THE LOWER TOP. THE 65 CM UPPER TABLE TOP IS FIXED IN PLACE, WHILE THE UPPER TOP OF THE 139 CM TABLE TURNS 360° CLOCKWISE AND COUNTERCLOCKWISE. PROTECTIVE FELT GLIDES.



极简组合茶几

VSTKL-DC-8806-120



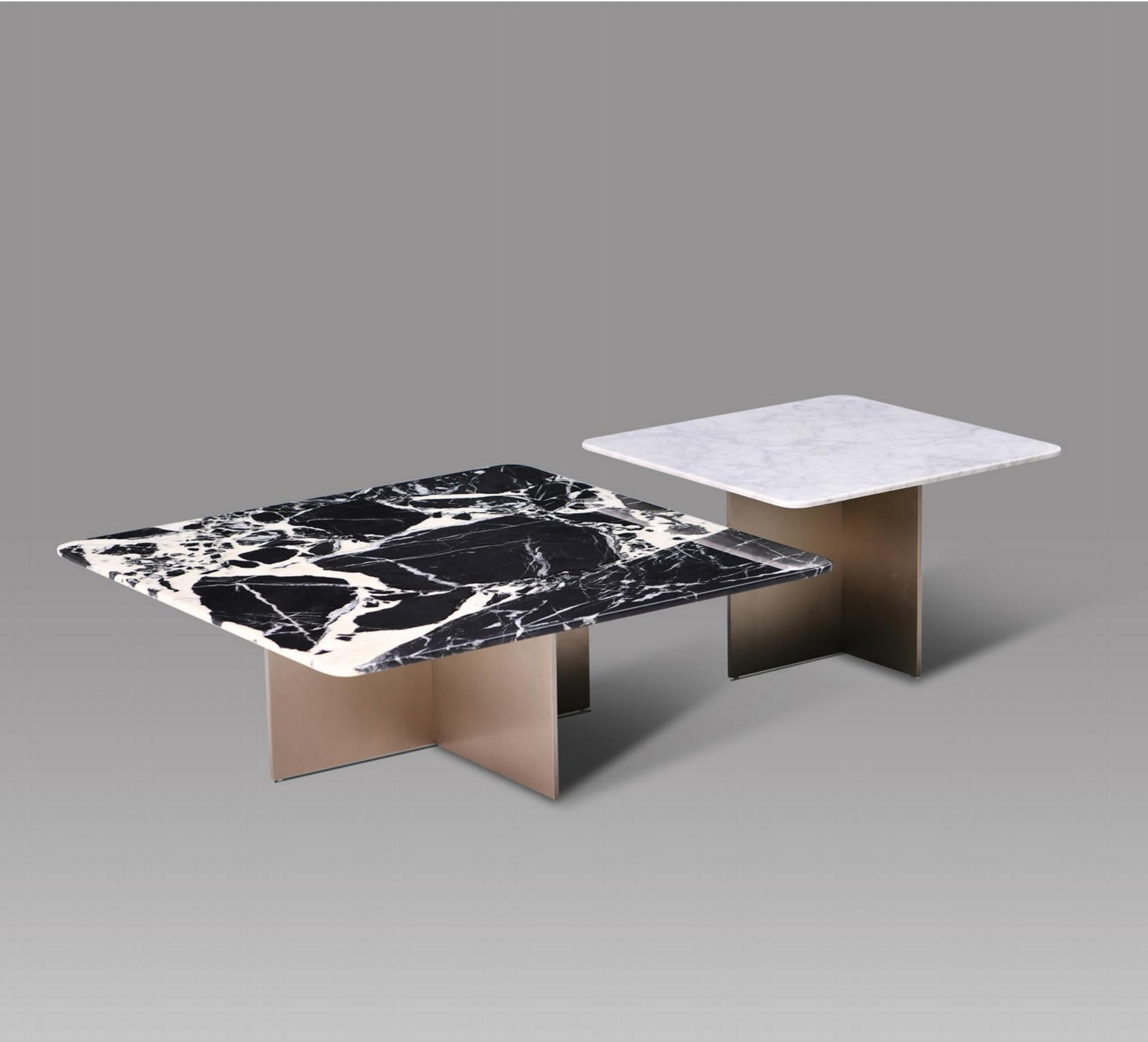
DC-8806, DJ-8806A



DC-6613



DC-8803



DC-8827

极简云朵组合茶几

VSTKL-DC-8829B-125



DC-8829B



DC-8831A DJ-8831



DC-8831A DJ-8831

ERCHI 而驰 AISUN

CURVED HONEYCOMB PLYWOOD. UPPER AND LOWER

TOPS IN MDF. THE CIRCULAR, 65 CM UPPER TABLE TOP IS

COMPLETELY ENCASED IN A METAL SHEET. THE 139 CM

SURFACE OF THE UPPER TABLE TOP IS IN THE SAME

FINISH AS THAT CHOSEN FOR THE ELLIPTICAL BASE. A

METAL SHEET BORDER FINISHES THE EDGE OF THE LOWER

TOP. THE 65 CM UPPER TABLE TOP IS FIXED IN PLACE,

WHILE THE UPPER TOP OF THE 139 CM TABLE TURNS 360°

CLOCKWISE AND COUNTERCLOCKWISE. PROTECTIVE FELT

GLIDES.

DC-8814A,DJ-8814



DC-6601



DC-6622



DC-6626

极简方形组合茶几

VSTEC-DC-6624AB-90-90



DC-6624

极简大小圆茶几

VSTKL-DC-8808B-90-65



DC-8808B DC-8802D



DC-8810



DJ-2508A

ERC-HI 而馳 AISUN

IN QUESTA PAGINA: COMODINO GENTLEMAN IN NOCE GOLD CON TOP IN LACCATO OPACO CHAMPAGNE, BASAMENTO CON PIEDINI CHAMPAGNE OPACO.

THIS PAGE: GENTLEMAN COFFEE TABLE IN GOLD WALNUT WITH TOP IN MAT LAC-QUERCHAMPAGNE, BASE WITH FEET IN MAT CHAMPAGNE.



ERC-HI 而馳 AISUN

IN QUESTA PAGINA: COMODINO GENTLEMAN IN NOCE GOLD CON TOP IN LACCATOOPACO CHAMPAGNE, BASAMENTO CON PIEDINI CHAMPAGNE OPACO.

THIS PAGE: GENTLEMAN COFFEE TABLE IN GOLD WALNUT WITH TOP IN MAT LAC-QUERCHAMPAGNE, BASE WITH FEET IN MAT CHAMPAGNE.



DJ-6603

DJ-2508A





DJ-8819A

IN QUESTA PAGINA: COMODINO GENTLEMAN IN NOCE
GOLD CON TOP IN LACCATOOPACO CHAMPAG-
NE,BASAMENTO CON PIEDINI CHAMPAGNE OPACO.
THIS PAGE: GENTLEMAN COFFEE TABLE IN GOLD
WALNUT WITH TOP IN MAT LAC-QUERCHAMPAG-
NE,BASE WITH FEET IN MAT CHAMPAGNE.

ERC- 而 馳 AISUN



ERCHI 而驰 AISUN

DJ-8831



DJ-8832



小茶几

VSTKL-DJ-8849-60

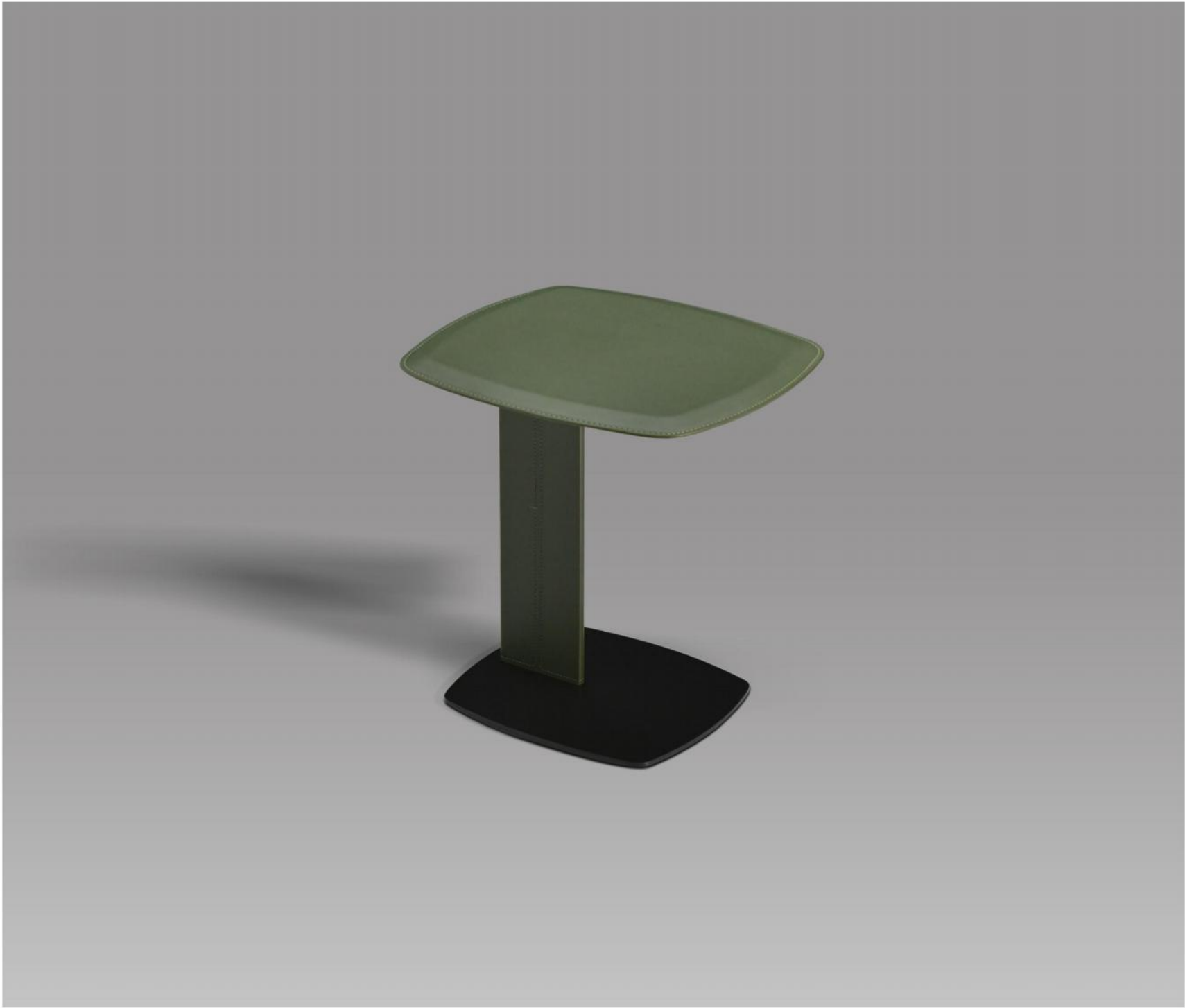


DS-6613

ERCHI 而驰 AISUN



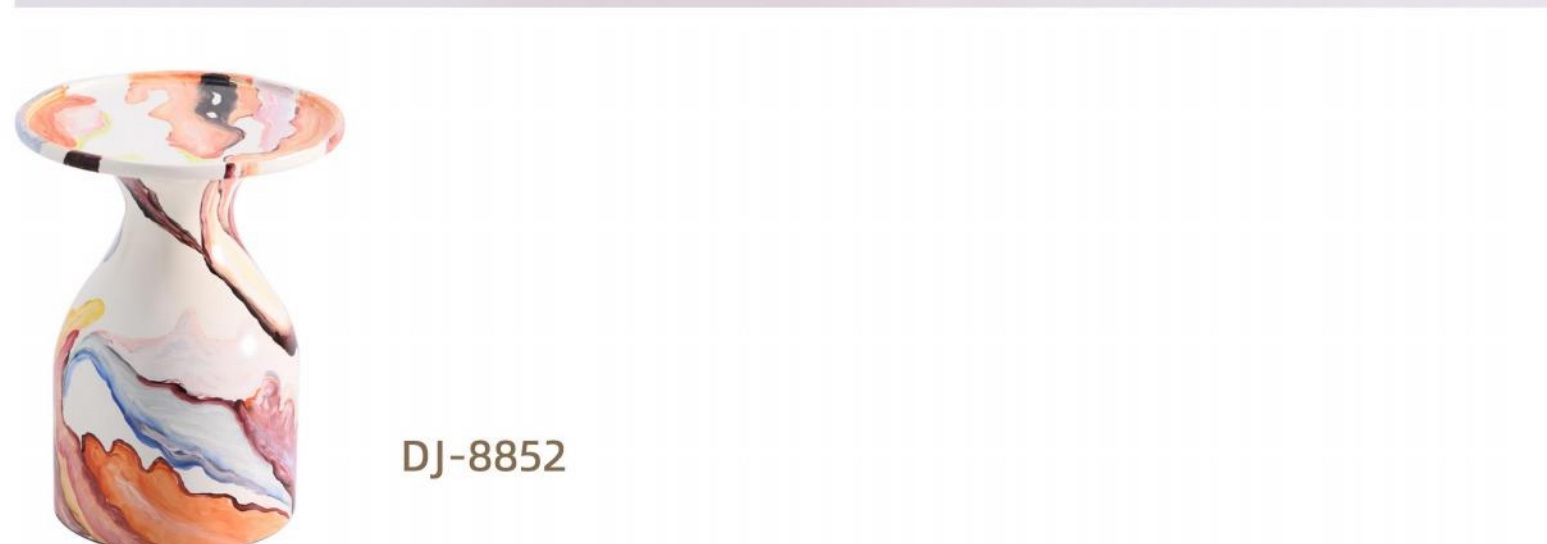
DJ-8849



DJ-8815



DJ-8848



DJ-8852

COFFEE TABLE

FASHIONABLE & MINIMALIST.2025

FASHIONABLE & MINIMALIST.2025



DJ-8805A



DJ-8805B



DJ-8809



DJ-8815



DC-8863



DC-5520



DC-5518



DJ-5515



DC-5519A

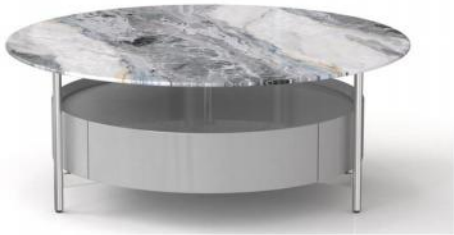


DC-5519B

COFFEE TABLE

FASHIONABLE & MINIMALIST.2025

FASHIONABLE & MINIMALIST.2025



DC-8803A



DC-8806



DC-8808



DC-8837B



DC-8814A



DC-8814B



DC-8816



DC-8829B



DC-8836A



DC-8836B



DJ-8829A



DC-8837C



DJ-6616



DJ-6619



DJ-8806A



DJ-8807

COFFEE TABLE

FASHIONABLE & MINIMALIST.2025

FASHIONABLE & MINIMALIST.2025



DC-6604C



DC-6629B



DJ-5521



DJ-8816



DS-6613



EC-C001



EC-C002



EC-C003



EC-C004



EC-C005



EC-C006



EC-C007



DC-6629C



DS-8809A



DS-5512



DS-2301

COFFEE TABLE

FASHIONABLE & MINIMALIST.2025

FASHIONABLE & MINIMALIST.2025



DJ-6609



DS-2811



DS-2966



DC-2866



DC-6601



DC-6601B



DC-6601C



DC-6604



DC-6605D



DC-6607A



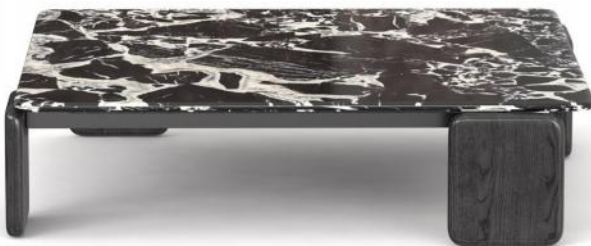
DC-6607B



DC-6613



DC-6613B



DC-6616A



DC-6616B





DZ-138



DESK

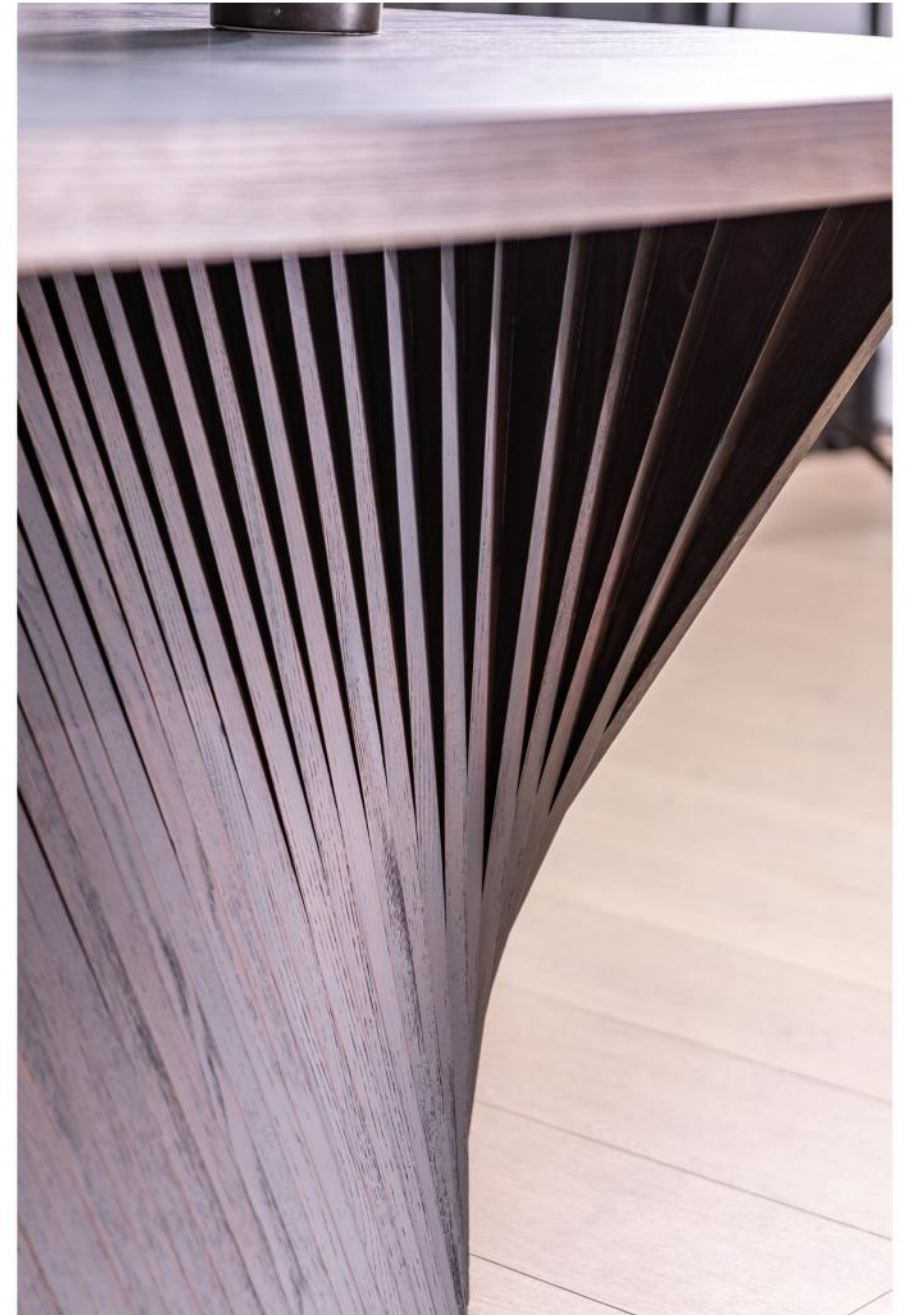
FASHIONABLE & MINIMALIST.2025

FASHIONABLE & MINIMALIST.2025



DZ-8818

ERCHI 而馳 AISUN



DZ-5507





DZ-8817



REVOLUTIONARY AS MUCH AS IT IS QUITE DIFFERENT FROM ANY OTHER IN TERMS OF SHAPE AND POTENTIAL, THIS MULTIFUNCTIONAL TABLE IS A PERFECT SUMMATION OF CHARLOTTE PERRIAND'S TAKE ON L'ART DE VIVRE THE STRUCTURE CONSISTS OF THE SIMPLE BUT PERFECT PLACEMENT OF FOURTEEN STAVES PLACED SIDEBYSIDE, ASSEMBLED WITH SIGNATURE STYLE BY CASSINA'S CARPENTERS. EACH OF THESE ELEMENTS COMBINES INTO AN EXTREMELY ELEGANT, FANSHAPED AND VERSATILE WHOLE, LENDING ITSELF TO A DYNAMIC AND INNOVATIVE APPLICATIONS WHATEVER THE SITUATION. DEPENDING ON THE CHOICE OF WIDTH OF THE CENTRAL PART, VENTAGLIO CAN, WHEN USED AS A DINING TABLE, ACCOMMODATE BETWEEN FIVE AND NINE GUESTS. IN THE OFFICE, SEVERAL PEOPLE CAN SIT ROUND VENTAGLIO'S ASYMMETRICAL DESKTOP, WITH PLENTY OF ROOM FOR COMPUTERS AND OTHER PROFESSIONAL TOOLS.



DESK

FASHIONABLE & MINIMALIST.2025



FASHIONABLE & MINIMALIST.2025



DZ-8820

ERCHE 而驰 AISUN



EC-S004

DESK

FASHIONABLE & MINIMALIST.2025



DZ-3336

FASHIONABLE & MINIMALIST.2025

DZ-6602



DESK

FASHIONABLE & MINIMALIST.2025

FASHIONABLE & MINIMALIST.2025



DZ-5508

DZ-8809





DZ-6614



DZ-5503

ERC-HI 而馳 AISUN