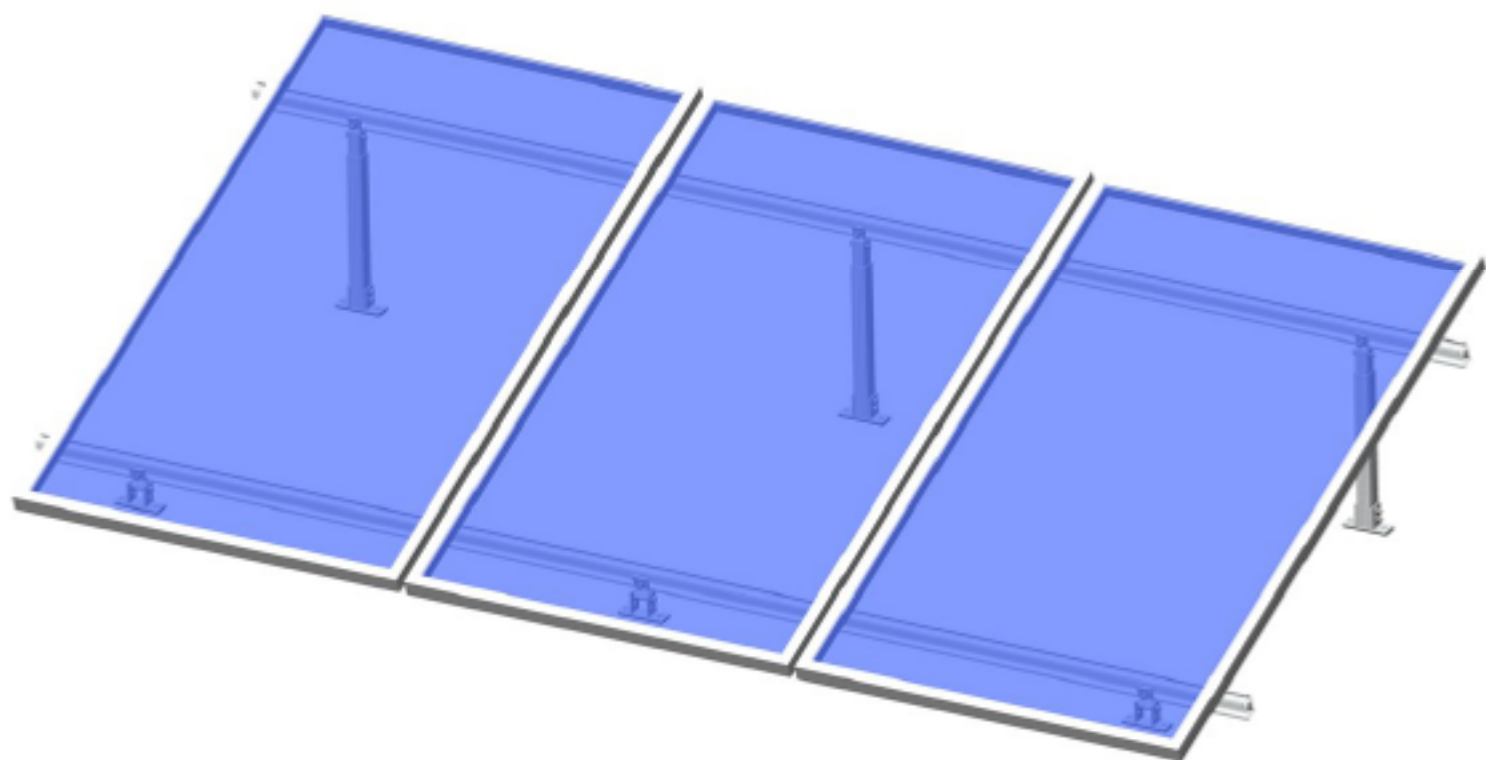




**XIAMEN ART SIGN CO.,LTD.**


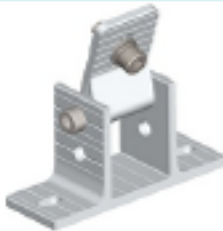


## Adjustable Tilt Kit

Installation Guide



### ● Components List

	
<p><b>AS-DR-01A</b> D rail 01A# W32.30*H59.45mm Material: aluminum 6005-T5</p>	<p><b>AS-DR-01B</b> D rail 01B# W32.10*H53.75mm Material: aluminum 6005-T5</p>
	
<p><b>AS-DR-03</b> D rail 03# W31.70*H46.70mm Material: aluminum 6005-T5</p>	<p><b>AS-DRS-01</b> 1# D rail splice L150*W23.6*H8mm Material: aluminum 6005-T5 Allen bolt M8*20mm 2pcs Application:AS-DR-01A/01B/03#</p>
	
<p><b>AS-DRS-02</b> 2# D rail splice L150*W17.9*H30mm Material: aluminum 6005-T5 Rivet 1pcs Application: AS-DR-01A/01B</p>	<p><b>AS-DMC</b> D rail mid clamp 40/50mm width Material: aluminum 6005-T5 Application: Framed panel, aluminum rail - D nut series</p>

	
<p><b>AS-DEC</b> D rail end clamp 40/50mm width Material: aluminum 6005-T5 Application: Framed panel, aluminum rail - D nut series</p>	<p><b>AS-AFL-02</b> Adjustable front leg Base size: L115*W39mm Material: aluminum 6005-T5 EPDM 1pcs Self-tapping screw M6.3*80mm screw 2pcs / Anchor bolt M12*100 Application: concrete roof, tin roof</p>
	
<p><b>AS-ABL-02</b> Adjustable rear leg Tube H: 250mm (10-15°), 392mm(15-30°), 680mm(30-60°) Material: aluminum 6005-T5 EPDM 1pcs Self-tapping screw M6.3*80mm screw 2pcs / Anchor bolt M12*100 Application: concrete roof, tin roof</p>	<p><b>AS-ABL-02-D</b> Fixed leg Customized angle Material: aluminum 6005-T5 EPDM 1pcs M6.3*80mm screw 2pcs / Anchor bolt M12*100 Application: concrete roof, tin roof</p>

### ● Installation Tools



Allen Key (A 8mm)



Tape Measure



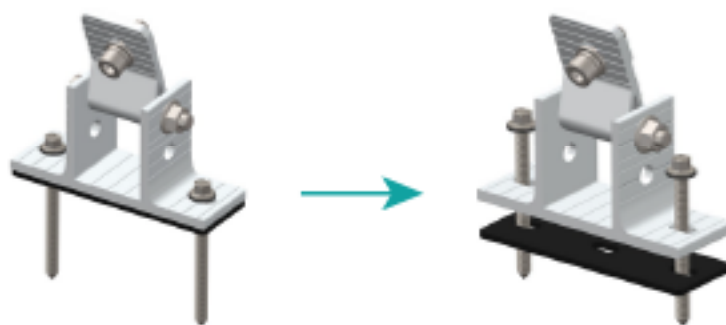
Impac Driver

### STEP 1 Front & rear leg installation

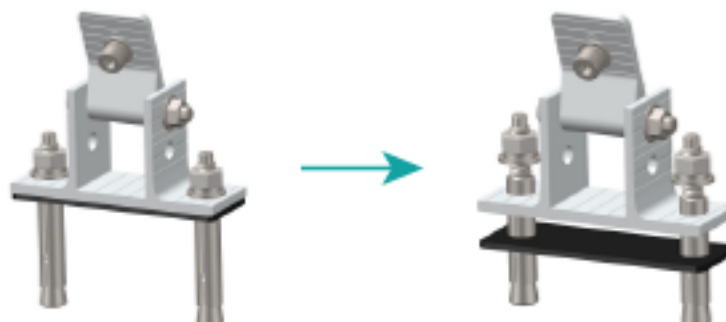
① Pre-set the installation position. Then fix the front and rear leg as the installation site.



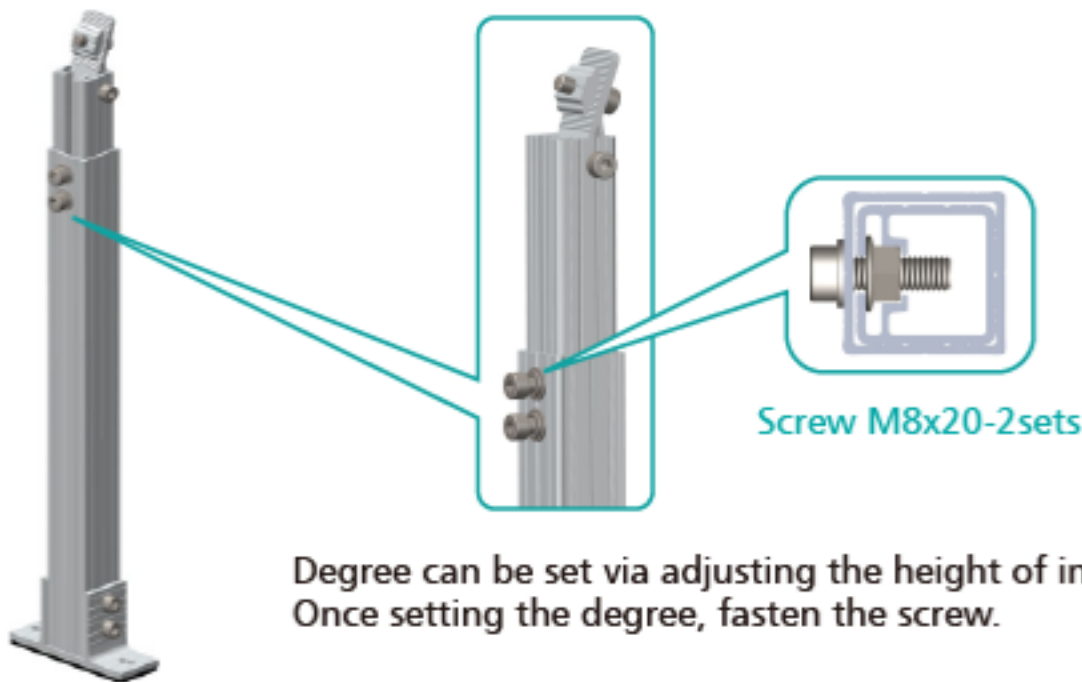
② Footing installation tips.



Self-tapping screw M6.3x80-2pcs



Anchor bolt M6x50-2pcs



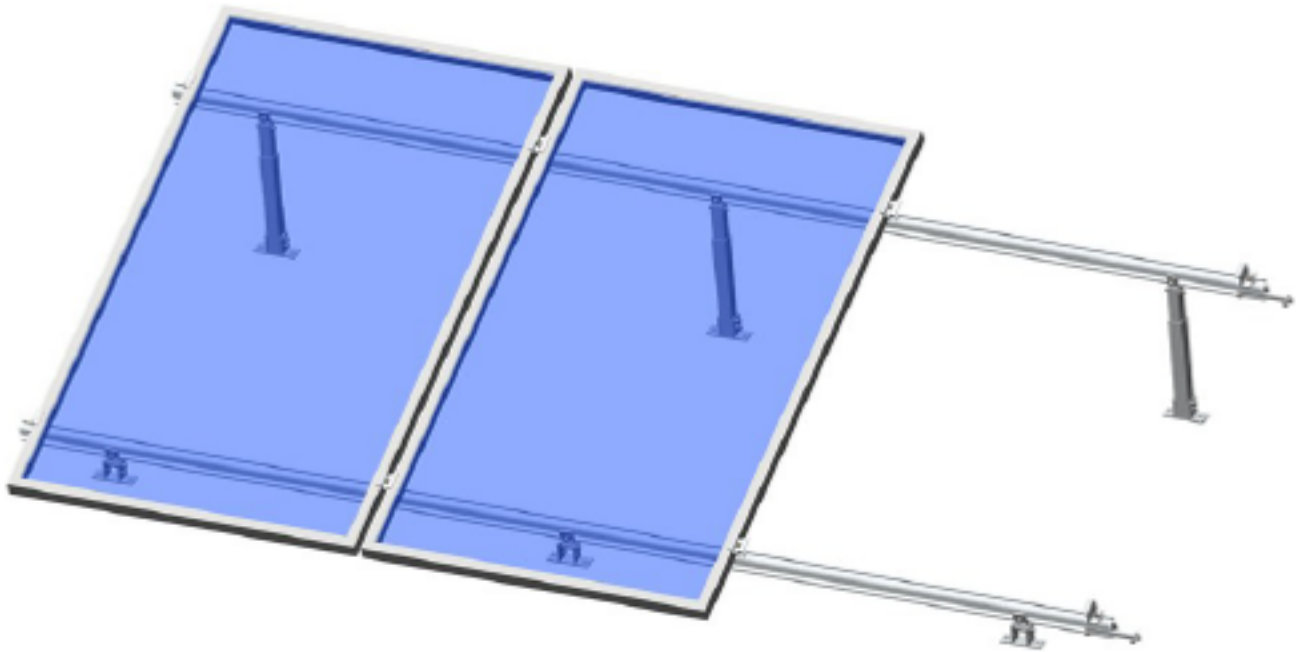
## STEP 2 Fix the rail on the top of front and rear leg.

Put the D nut of footing into the rail slot, fasten the bolts firmly.



### STEP 3 Solar panels installation.

Fix the solar panels via mid and end clamps.



① Fix the mid clamp.  
Insert the D nut of mid clamp into rail slot,  
and then fasten firmly.



② Fix the end clamp.  
Insert the D nut of end clamp into rail slot,  
and then fasten firmly.

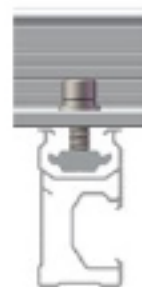
#### ART SIGN D nut series rail installation tips.



Position the one side  
of D nut into rail slot.



Put another side of  
D nut into rail slot.



Fasten the bolt.



Fasten the bolt  
firmly.