

SOLAR GROUND MOUNTING SYSTEM



XIAMEN ART SIGN CO.,LTD.

Mob/whatsapp/wechat: +86 180 3023 5875 / +86 189 5920 8931

E-mail: sales@artsign.net.cn / sales@aisinee.com

Tel: 0086-592-6266951 Fax: 0086-592-6266952

Add: Unit 301, No. 600 Guankou South Road, Jimei District, Xiamen, China



www.artsignenergy.com



www.aisinee.com



XIAMEN ART SIGN CO., LTD

ART SIGN is focused on designing and manufacturing solar PV mounting solution and accessories!



XIAMEN ART SIGN CO.,LTD

"ART SIGN ENERGY, PROTECT THE ENVIRONMENT, LIGHT UP YOUR LIFE!"

Established in 2006, Artsign is the designer and producer of aluminum and steel products.

We supply rooftop and open filed mounting structure for solar panel, with quality material aluminum and carbon steel.



- Our Factory

Artsign has own buildings which occupies an area of 10500 square meters for office working, equipment production, products packing so that we can control the production and cost.

- Our R&D Department

To meet the market request, our professional R&D department always create and improve the new design of solar mounting system.

- Our Production Ability

Till now, Artsign can produce around 25-30MW of mounting structure per month.

- Our Inspection team

Artsign has built inspection team to inspect products from raw material to the end of shipment, which make sure you can receive the goods as expected.

- After-sale Service

Our sales team always follows your goods after leaving our warehouse. If any problem occur, we will assist to solve the problem at first time. Your further feedback or opinion will also be adopted and improved in our future work.

Honor Certificate

Trusted by clients globally, ART SIGN is rapidly expanding its footprint, delivering high-quality solar mounting solutions to the world.

Multiple international certifications



ART SIGN Business Licence



ISO certificate of management system



Steel ground solar mounting TÜV certificate



AS-D-P003 Steel bracket EUIPO Patent



AS-D-P003 Solar panel bracket L100 USA Patent



SGS Factory Audit



Japan Good Design Award



Solar Roof Mount CE Certificate



OUR EQUIPMENT

OUR INSPECTION



OUR PACKAGE

OUR PRODUCTION PROCESS



Raw Material



Cutting



Punching



Drilling



Pre-assembly



Package



01

Solar Mounting Solutions

Diverse Solar Mount Solutions for All Ground Types

ALUMINUM GROUND MOUNTING SYSTEM

RECTANGLE BEAM	1-2
2 SLOTS U BEAM	3-4
SINGLE SLOT U BEAM	5-6
W TYPE	7-8
FIXED W TYPE	9-10
RAILLESS	11-12

C TYPE CARBON STEEL GROUND MOUNTING SYSTEM

PLATE BASE	13-14
PILE SCREW FOUNDATION	15-16
C80 POST	17-18
C TYPE ZM COATED STEEL GROUND MOUNTING SYSTEM	19-20
DRIVING PILE	21-22
U95 PILLAR	23-24
U133 PILLAR	25-26

NEW MATERIAL: HOT-DIP ZINC-ALUMINUM-MAGNESIUM ALLOY-COATED STEEL SHEET

27-28

POLE GROUND MOUNTING SYSTEM

29-30

STEEL PIPE GROUND MOUNTING SYSTEM

31-32

SOLAR FARM MOUNTING SYSTEM**STEEL SOLAR FARM MOUNTING SYSTEM**

33-34

STEEL SOLAR MOUNTING SYSTEM - C TYPE CARBON STEEL

35-36

ALUMINUM SOLAR FARM MOUNTING SYSTEM

37-38

PV PANEL CARPORT MOUNTING STRUCTURES**SINGLE POST SOLAR CARPORT**

39-40

DOUBLE POST SOLAR CARPORT

41-42

WIRE MESH FENCING

43-44

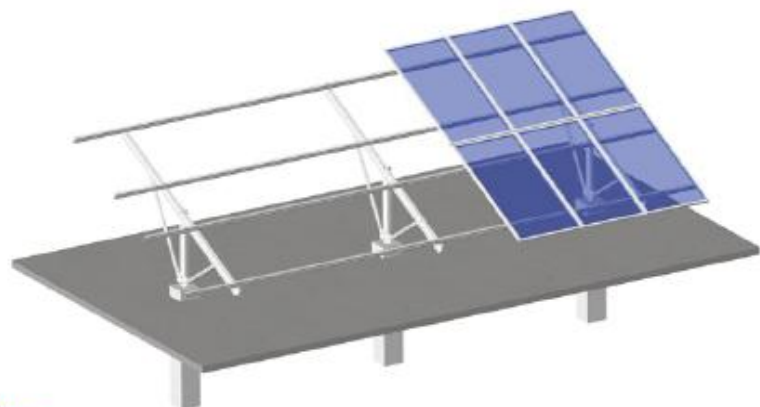
02

Solar Mounting Components

ART SIGN can supply OEM & ODM service

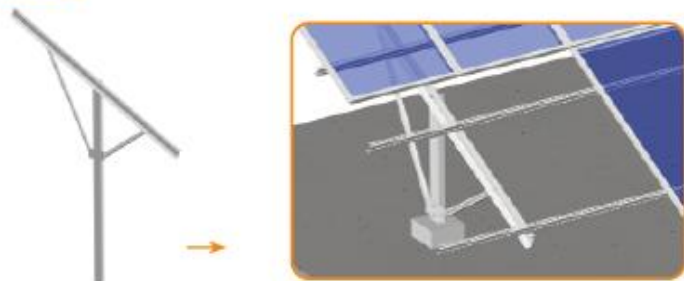
COMPONENTS LIST

Aluminum rail - D nut series	45
Aluminum rail - E module series	45
Aluminum rail - T module series	46
Aluminum rail - TR series	46
Steel rail - T module series	46-47
Rail Splice	47-48
Clamps	49-50
Beam / Supporting	50-51
Other aluminum components	51-55
Other steel components	55-57
Ground Screw	57-58
ZM steel accessories	58-59
Screw and Bolt	59
Plastic cap	59-60



• Design Features

- ① Driving pile is the cheapest foundation type.
- ② Most structure for larger scale solar power system.
- ③ Few elements, quick installation.



• Surface treatment:

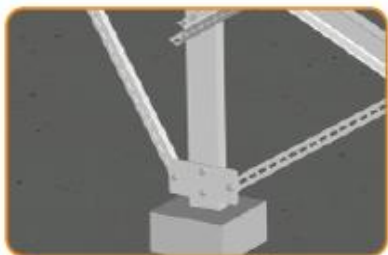
80µm thk. Hot dipped galvanizing steel, 10µm thk. Anodized aluminum, stainless steel 304 or steel Q235B bolts and nuts.

• Design Strength:

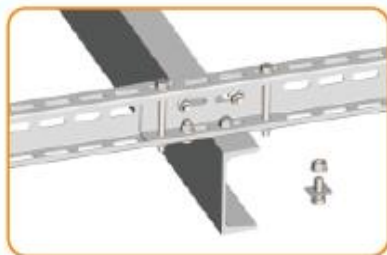
The structure is designed according to the wind load or snow load request.

• Certification:

Japanese JIS, Australia AS/NZS 1170.2-Wind load report; SGS report-Chemical & Physical test.

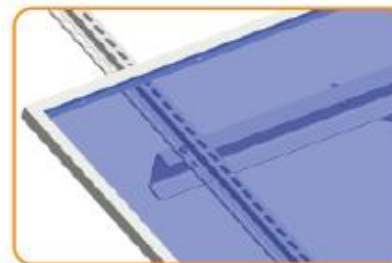


Driving post

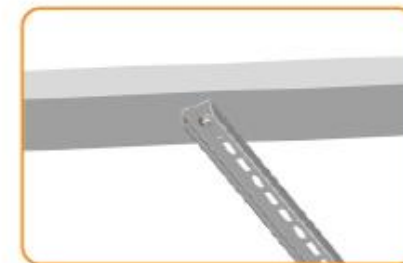


Rail C80x40 connect the beam C126x53 which needs hexagon bolt M12x30 with wedged pad

MAIN COMPONENTS



Panel fixed on rail via allen bolt M8*20



Bracing fixed on beam via hexagon bolt M12*25

• Aluminum parts



AS-C50x30
C50x30 section
W50*H30mm
Material: ZM steel
Application: Bracing



AS-C80x40
C80x40 section
W80*H40mm
Material: ZM steel
Application: Rail



AS-Z-A018
C80x40 profile splice
W80*H40mm
Hexagon bolt M10*30 6pcs
Material: ZM steel



AS-SPB-280x130
Steel plate bracket
L280*W130mm
Material: hot dipped galvanized steel
Hexagon bolt M12*30mm 2pcs,
M12*25mm 2pcs



AS-C126x53
C126x53 section
Material: HDG Q235
Application: Post



Design Features

- ① More economical and easier to install.
- ② Few elements, quick installation.
- ③ HDG or Zin-Alu-Mag material for option.



C steel middle bracket

C steel end bracket

Surface treatment:

80µm thk. Hot dipped galvanizing steel or Zin-Mag steel, 10µm thk. Anodized aluminum, stainless steel 304 bolts and nuts.

Design Strength:

The structure is designed according to the wind load or snow load request.

Certification:

Japanese JIS, Australia AS/NZS 1170.2-Wind load report; SGS report-Chemical & Physical test.



Pillar jointer



Bracing and Pillar connector

MAIN COMPONENTS



AS-AL-CEB

C steel end bracket
L50*W100mm
Material: aluminum 6005-T5
Allen bolt M8*30mm 1pcs
Application: AS-C80



AS-AL-CMB

C steel middle bracket
L50*W100mm
Material: aluminum 6005-T5
Allen bolt M8*45mm 1pcs
Application: AS-C80



AS-SRS-C80-03

C80 splice
L300*W73*H32mm
Material: hot dipped galvanized steel
Hexagon bolt M10*30mm 3pcs,
M10*100mm 2pcs



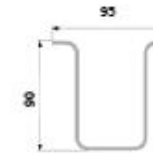
AS-C80x40

C80x40 section
W80*H40mm
Material: ZM steel



AS-SSJ

U95 pillar jointer
L=70mm
Material: aluminum 6005-T5
Hexagon bolt M10*30mm 2pcs,
M10*75mm 2pcs



AS-U90x95

U90x95 hat section
Material: ZM steel
Application: post



According to customized wind load and snow load request, after strength calculation, the engineer will choose K structure for high load request, V structure for normal load.



• Design Features

- ① More economical and suitable for large scale solar project.
- ② Few elements, quick installation.
- ③ HDG or Zin-Alu-Mag material for option.



• Surface treatment:

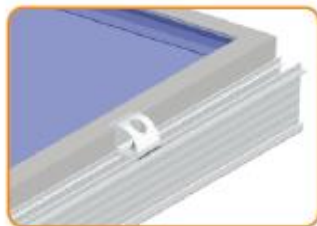
80µm thk. Hot dipped galvanizing steel or Zin-Mag steel, 10µm thk. Anodized aluminum, stainless steel 304 or steel Q235B bolts and nuts.

• Design Strength:

The structure is designed according to the wind load or snow load request.

• Certification:

Japanese JIS, Australia AS/NZS 1170.2-Wind load report; SGS report-Chemical & Physical test.



end clamp for fixing panels



mid clamp for fixing panels



H connector for connecting beam

MAIN COMPONENTS











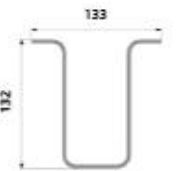


H80 connector for connecting post



pillar H connector

• Aluminum parts

 AS-TCEC End clamp 50mm width Material: aluminum 6005-T5 Application: landscape panel installation	 AS-TCMC Mid clamp 50mm width Material: aluminum 6005-T5 Application: landscape panel installation	 AS-KC-02 Clip L=50mm Material: aluminum 6005-T5 Allen bolt M8*25mm 1pcs
 AS-R-16 / AS-CB Rail 16# / Cross beam W49.50*H89.20mm Material: aluminum 6005-T5	 AS-TR85-01 T85 rail 01# W53.6*H93mm Material: aluminum 6005-T5	 AS-AS-5 Aluminum Support (T nut) W59.4*H59.4mm Material: aluminum 6005-T5
 AS-AL-BS-100-T Beam Slider L100*W68.4*H98.5mm Material: aluminum 6005-T5 Hexagon bolt M12*90mm 1pcs T bolt M8*25mm 4pcs	 AS-AL-HBS-80 Beam Slider L80*W82.4*H114mm Material: aluminum 6005-T5 Hexagon bolt M12*90mm 1pcs M12*100mm 4pcs	 AS-AL-HBS-100 Beam Slider L100*W85.7*H124mm Material: aluminum 6005-T5 Hexagon bolt M10*75mm 1pcs M12*115mm 1pcs T bolt M8*20mm 4pcs
		 AS-U132x133 U132x133 hat section Material: ZM steel Application: post

• **What is Zinc-Aluminum-Magnesium alloy-Coated Steel sheet?**

Super Hot-dip Zinc-Aluminum-Magnesium alloy Coated Steel sheet (SCS) is a highly corrosion-resistant coated steel sheets with a coating composition consisting of Zinc as the main substrate in combination with Aluminum (11%), Magnesium (3%) and a trace amount of Silicon.

Hot-dip Zinc-Aluminum-Magnesium alloy Coated Steel sheet had been developed successfully in foreign steel mill of Japan ("ZAM brand"), European (ZM Ecoprotect, Magizinc), Australia (ZINCALUME) etc.

• **Difference between HDG steel and Zin-Alu-Mag steel.**



① HDG steel processing: steel belt-forming-galvanizing (After galvanizing)



② Zin-Alu-Mag steel processing: forming (Pre-galvanizing)



• **Features**

Anti-corrosion	Self-healing	Long life time	Easy Processing
Anti-corrosion property is 10 - 20 times better than galvanized steel materials.	Zn (OH) 2, ZnCl2 and Mg (OH) 2 form protective film and restrain cutting places corroded.	Normally, lifetime not less than 30 years.	Perfect property in stretching, bending, welding or other processing.

Mechanical Property

Mechanical Property				
Grade	Yield Strength Rel.Mpa	Tensile Strength Rm.Mpa	Elongation A80, %	Current Standard
SCS51D	-	270-550	22	QJG-P.008-2017
SCS52D	140-300	270-420	26	
SCS53D	140-260	270-380	35	
Grade	Yield Strength Rel.Mpa	Tensile Strength Rm.Mpa	Elongation A50, %	
SCS300	195	300	20	
SCS340	245	340	19	
SCS400	295	400	18	
SCS440	335	440	17	
SCS490	365	490	16	
SCS570	560	570	/	

Super anti-corrosion Property—cutting places

5% NaCl Neutral Salt Spray Test



Coating weight of SCS

Coating weight No.	Minium coating weight/m2, Double side	
	Triple-spot test	Single spot test
C60	60	51
C80	80	68
C100	100	85
C120	120	102
C150	150	128
C180	180	153
C200	200	170
C225	225	195
C275	275	235
C300	300	255
C350	350	298
C450	450	383



• Design Features

Large pole mounting system is suited for 6-12 panels each.
Mini pole mounting system is suited for 1-4 panels each.



Large pole mount:
Steel tube connect with aluminum rail
via aluminum L connector



Large pole mount:
Steel tube connect with steel beam
via steel L connector



Mini pole mount:
Aluminum rail beam connect with rail
via 40mm L connector

• Surface treatment:

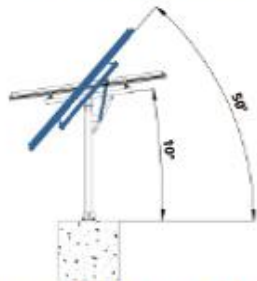
80µm thk. Hot dipped galvanizing steel, 10µm thk. Anodized aluminum, stainless steel 304 bolts and nuts.

• Design Strength:

The structure is designed according to the wind load or snow load request.

• Certification:

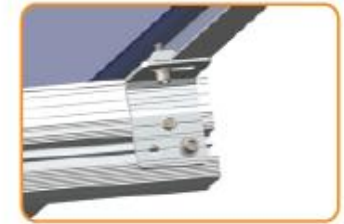
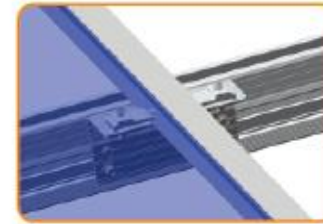
Japanese JIS, Australia AS/NZS 1170.2-Wind load report; SGS report-Chemical & Physical test;
USA ASCE7-10 Minimum Design Loads for Buildings and Other Structures.



Mini pole mount: adjust 10-50°



Large pole mount: adjust 10-60°



For easier installation, the panel can be installed under the structure to higher pole mount.

• Aluminum parts



AS-EC
E rail end clamp
40/50mm width
Material:
aluminum 6005-T5



AS-MC
E rail mid clamp
40/50mm width
Material:
aluminum 6005-T5



AS-R-06
Rail 6#
W40.00*H57.39mm
Material:
aluminum 6005-T5



AS-R-18
Rail 18#
W50.22*H90.00mm
Material:
aluminum 6005-T5



AS-LC-01
40mm L connector
L40*W49mm
Material:
aluminum 6005-T5
Allen bolt M8*25mm 2pcs



AS-LC-04
L connector
L200*W49*H49mm
Material: aluminum 6005-T5
Allen bolt M8*25mm 2pcs
U bolt M10*W91*H105mm 1pcs



AS-LC-80
80mm L connector
L80*W49*H49mm
Material: aluminum 6005-T5
Allen bolt M8*25mm 2pcs,
M8*80mm 2pcs



AS-SLC-01
Steel L bracket
L200*W70*H70mm
Material: steel Q235
Hexagon bolt M12*160mm 2pcs,
M12*110mm 2pcs



AS-PEB
Panel end bracket
L=60mm
Material: aluminum 6005-T5
Allen bolt M8*25mm 2pcs
Self drilling bolt
M6.3*25mm 1pcs



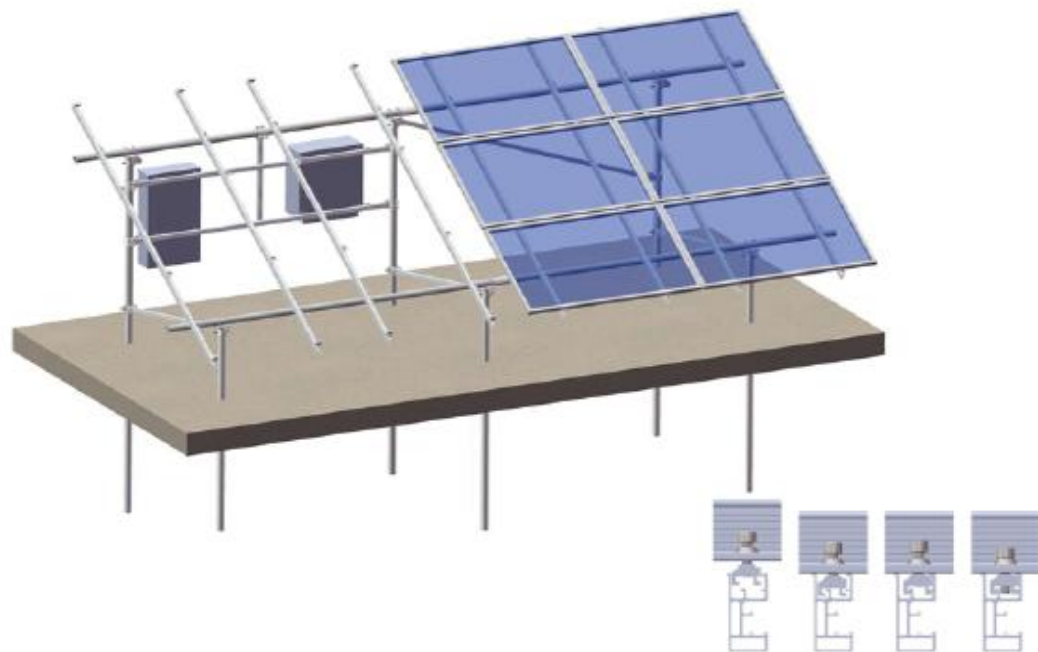
AS-PIB
Panel inter bracket
L=120mm/160mm
Material: aluminum 6005-T5
Allen bolt M8*25mm 4pcs
Self drilling bolt
M6.3*25mm 2pcs

Large pole mount



Mini pole mount





- Design Features**
 - Few components, flexible installation: cut or joint the steel pipe when ramming pile at site.
 - E nut design: 3 slots design which is perfectly matched 18# aluminum rail slot.
- Surface treatment:**
 Pile driven, ground screw, concrete pad.
- Design Strength:**
 80µm thk. Hot dipped galvanizing steel, 10µm thk. Anodized aluminum, stainless steel 304 bolts and nuts.
- Certification:**
 Australia AS/NZS 1170.2-Wind load report; SGS report-Chemical & Physical test.



Structure installation for inverter



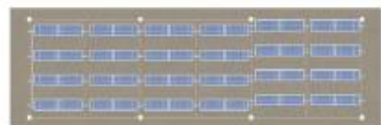
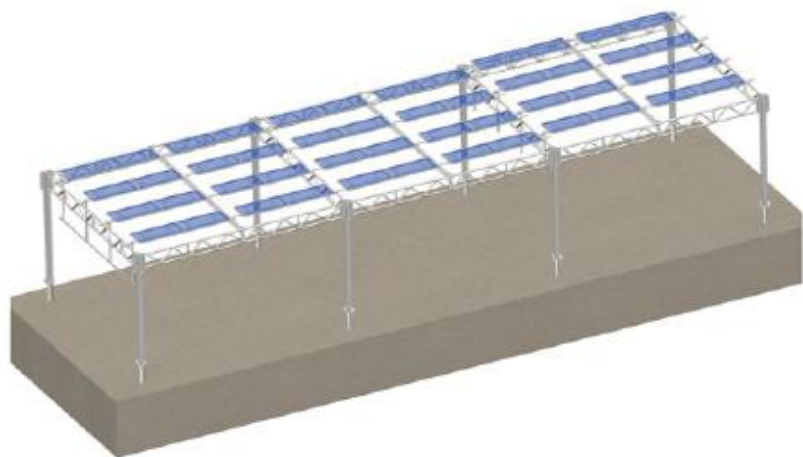
Rail & pipe connection



Bracing connection

MAIN COMPONENTS

- | | | |
|--|---|---|
|  <p>AS-EC
E rail end clamp
40/50mm width
Material:
aluminum 6005-T5</p> |  <p>AS-MC
E rail mid clamp
40/50mm width
Material:
aluminum 6005-T5</p> |  <p>AS-EC02
E rail end clamp
40/50mm width
Material:
aluminum 6005-T5</p> |
|  <p>AS-BPS-01
Pipe sleeve
φ 60mm
Material: aluminum 6005-T5
Hexagon bolt M12*70mm 1pcs,
M12*35mm 2pcs</p> |  <p>AS-BPS-02
Pipe sleeve
φ60mm
Material: aluminum 6005-T5
Hexagon bolt M12*70mm 2pcs,
M12*35mm 2pcs</p> |  <p>AS-BPS-3
Open sleeve
φ 60mm
Material:
hot dipped galvanized steel</p> |
|  <p>AS-TED
Pipe cap
□ 120*120mm
Material: hot dipped galvanized steel
Hexagon bolt M12*35mm 3pcs with flange nut,
Hexagon bolt M12*70mm 1pcs with flange nut</p> |  <p>AS-PC
Pipe connector
L=150mm
Material: aluminum 6005-T5
Hexagon bolt M10*12mm 8pcs or
Allen bolt M8*10mm 8pcs</p> | |
|  <p>AS-R-18
Rail 18#
W50.22*H90mm
Material: aluminum 6005-T5</p> |  <p>AS-TEP
Enforcement pipe
W38*H38mm
Material: anodized aluminum 6005-T5</p> | |
|  <p>AS-RS-02
E rail splice
L150*W21*H10mm
Material: aluminum 6005-T5
Allen screw M8*25mm
Application: Aluminum rail - e module series</p> |  <p>AS-TCP
Cross pipe / front feet / back feet
φ 60mm
Material:
hot dipped galvanized steel</p> | |
|  <p>AS-TAS
L connector
L=150mm
Material: aluminum 6005-T5
U bolt M12*W88*H105mm</p> |  <p>AS-UB
U bolt
M12*88*105mm
Material: dacromet steel Q235</p> | |



plan view



back view



side view

• Design Features

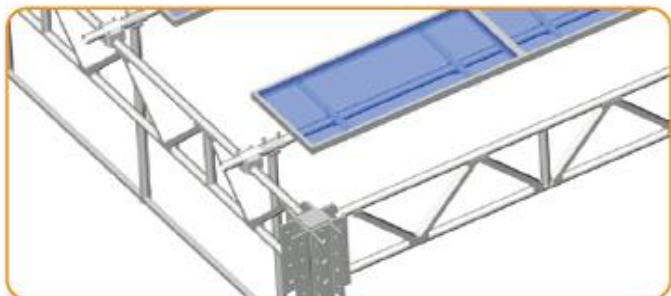
- ① Agricultural mounting structure which is available for farm cart handing underneath.
- ② Manual angle adjusted as season request.

• Surface treatment:

80μm thk. Hot dipped galvanizing steel, 10μm thk. Anodized aluminum, stainless steel 304 bolts and nuts.

• Design Strength:

The structure designed according to the wind load and snow load request.



MAIN COMPONENTS



AS-SF-MTRS
Middle truss
φ 48mm
Material:
hot dipped galvanized steel Q235



AS-SF-STRS
Side truss
φ 48mm
Material:
hot dipped galvanized steel Q235



AS-SF-RP-102
Steel round post
φ 102mm
Material:
hot dipped galvanized steel Q235



AS-SF-SP
Square post
□ W120*H120mm
Material:
hot dipped galvanized steel Q235



AS-CP-48
Side truss
φ 48mm
Material:
hot dipped galvanized steel Q235



AS-CP-102
Post cap
φ 102mm
Material:
hot dipped galvanized steel Q235



AS-SF-B
Bearing
φ 48mm
Material:
hot dipped galvanized steel Q235

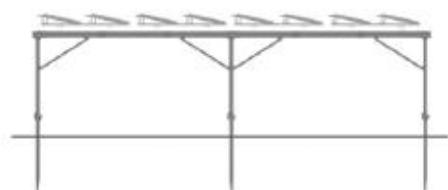


AS-SF-AP
Adjustable post
φ 48mm
Material:
hot dipped galvanized steel Q235



Design Features

- ① Agricultural mounting structure which is available for farm cart handing underneath.
- ② More economic and easier installation.
- ③ Top triangle kit could be pre-assembled.

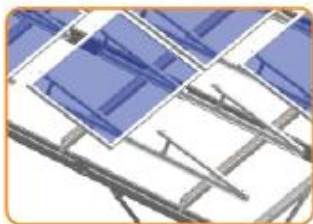


Surface treatment:

80µm thk. Hot dipped galvanizing steel, 10µm thk. Anodized aluminum, stainless steel 304 bolts and nuts.

Design Strength:

The structure designed according to the wind load and snow load request.



triangle kits installation



post connection



beam connection

MAIN COMPONENTS



AS-GSF-89

Ground screw
 ⌀ 89mm
 Material: hot dipped galvanized steel Q235



AS-SF03-MTRS

Middle truss
 Customized size
 Material: anodized aluminum 6005-T5



AS-SF03-STRS

Side truss
 Customized size
 Material: anodized aluminum 6005-T5



AS-SF03-SP

Square post
 □ W100*H100mm
 Material: hot dipped galvanized steel Q235



AS-SF03-ST

Steel tube
 □ 60*30mm
 Material: hot dipped galvanized steel Q235



AS-SF03-BTB

Triangle bracket
 □ 30mm
 Material: hot dipped galvanized steel Q235



AS-SF03-ST-IBC

Inter beam clip
 180*150*175mm
 Material: hot dipped galvanized steel Q235



AS-SF03-ST-SBC

Side beam clip
 180*150*175mm
 Material: hot dipped galvanized steel Q235

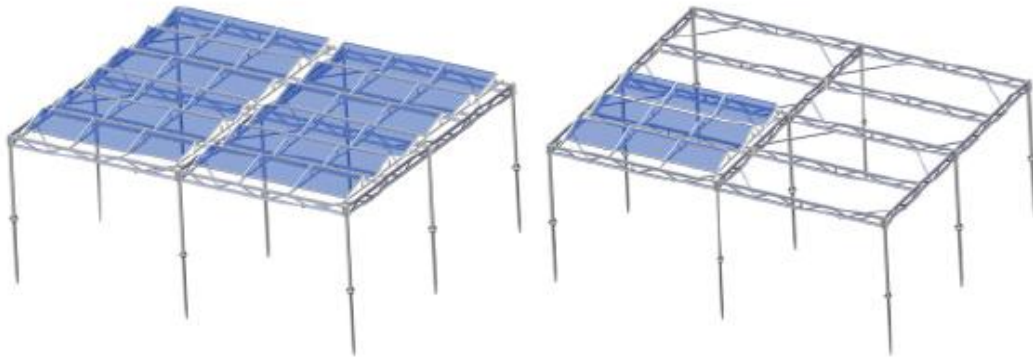


Pre-assembly



AS-PT

Post Triangle kit
 Material: anodized aluminum 6005-T5



• Design Features

- ① Agricultural mounting structure which is available for farm cart handing underneath.
- ② Aluminum structure will be lighter and easier for installation.
- ③ Top triangle kit could be pre-assembled.



• Surface treatment:

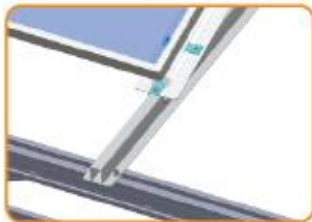
10µm thk. Anodized aluminum, stainless steel 304 bolts and nuts.

• Design Strength:

The structure designed according to the wind load and snow load request.



triangle kits installation



panel fixing



post & truss connection



AS-GSF-89

Ground screw
φ 89mm
Material: hot dipped galvanized steel Q235



AS-SF02-STRS

Side truss
Customized size
Material: anodized aluminum 6005-T5



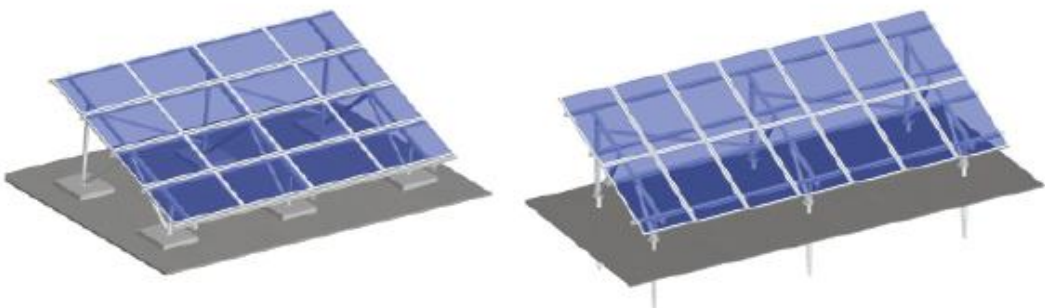
AS-SF02-MTRS

Middle truss
Customized size
Material: anodized aluminum 6005-T5



AS-SF02-SP

Square post
□ W80*H80mm
Material: hot dipped galvanized steel Q235



Design Features

- ① V/K structure will be pre-assembled which saving the installation time and labor cost.
- ② Rectangle beam design is more stable and stronger.
- ③ The same mounting system can be installed landscape panel or portrait panel.



Foundation type:

Pile driven, ground screw, concrete pad.

Surface treatment:

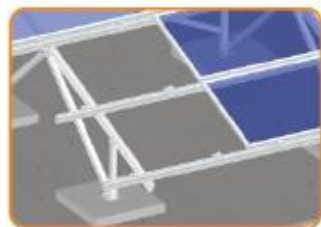
10µm thk. Anodized aluminum, stainless steel 304 bolts and nuts.

Design Strength:

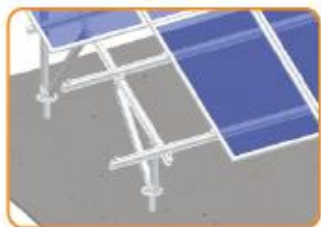
The structure designed according to the wind load or snow load request.

Certification:

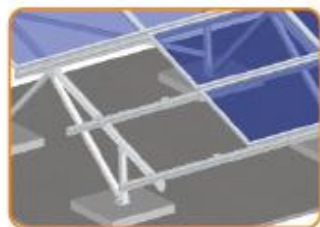
Australia AS/NZS 1170.2-Wind load report; SGS report-Chemical & Physical test.



landscape panel installation



portrait panel installation

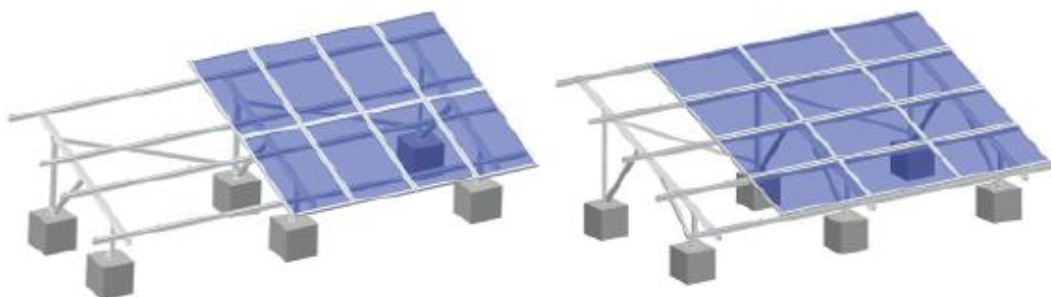


panel fixed under the structure

MAIN COMPONENTS

<p>AS-TEC End clamp 40/50mm width Material: aluminum 6005-T5</p>	<p>AS-TMC Mid clamp 40/50mm width Material: aluminum 6005-T5</p>	<p>AS-AL-EB End bracket L80*W75mm Material: aluminum 6005-T5 Allen bolt M8*25mm 2pcs</p>
<p>AS-AL-MB Middle bracket L80*W109mm Material: aluminum 6005-T5 Allen bolt M8*25mm 2pcs</p>	<p>AS-R-16 / AS-CB Rail 16# / Cross beam W49.50*H89.20mm Material: aluminum 6005-T5</p>	<p>AS-R-17 Rail 17# W63.30*H97.20mm Material: aluminum 6005-T5</p>
<p>AS-AS-2 Aluminum Support W60*H70mm Material: aluminum 6005-T5</p>	<p>AS-AS-3 / AS-AL-B Aluminum Support W35*H60mm Material: aluminum 6005-T5</p>	<p>AS-RS-16 Rail 16# & Rail 17# splice L=220mm Material: aluminum 6005-T5 self drilling bolt M6.3*25mm 8pcs</p>
<p>AS-AL-BS-110-T Beam Slider L110*W68.4*H98.5mm Material: aluminum 6005-T5 Hexagon bolt M12*90mm 1pcs T bolt M8*25mm 4pcs</p>	<p>AS-AL-BS-155 Beam Slider L155*W68.4*H98.5mm Material: aluminum 6005-T5 Hexagon bolt M12*90mm 2pcs Allen bolt M8*25mm 4pcs</p>	<p>AS-AL-RC Rail Clip L43*W45.8*H42.3mm Material: aluminum 6005-T5 Allen bolt M8*25mm 1pcs</p>
<p>AS-PEB-3 Panel end bracket 50mm width Material: aluminum 6005-T5 Allen bolt M8*20mm 1pcs, M8*25mm 1pcs</p>	<p>AS-PIB-3 Panel mid bracket 50mm width Material: aluminum 6005-T5 Allen bolt M8*20mm 2pcs, M8*25mm 1pcs</p>	<p>AS-SAB-8-50-T M8*50mm Bolt Set Material: SUS 304 bolt, aluminum 6005-T5 T nut Allen bolt M8*50mm</p>
<p>AS-VS V structure Material: aluminum 6005-T5 Pre-assembled</p>	<p>AS-KS K structure Material: aluminum 6005-T5 Pre-assembled</p>	<p>AS-GSF Ground screw with flange φ 76×1600mm Outer diameter: φ 48/60/76mm Length: 1000mm-3000mm Material: hot dipped galvanized steel</p>

MAIN COMPONENTS



Design Features

- ① Aluminum ground structure is lighter and easier to install.
- ② 2 slots U beam mounting system is more stronger and can withstand high wind load and snow load.

Foundation type:

Ground screw, concrete pad, pile driven, triangle base etc.
 Tips: Triangle base can prevent the whole system sinking into sandy ground which is suitable to desert or other similar ground.

Surface treatment:

10µm thk. Anodized aluminum, stainless steel 304 bolts and nuts.

Design Strength:

The structure designed according to the wind load and snow load request.

Certification:

Japanese JIS, Australia AS/NZS 1170.2-Wind load report; SGS report-Chemical & Physical test.



AS-TEC
 End clamp
 40/50mm width
 Material: aluminum 6005-T5
 Application: portrait panel installation



AS-TMC
 Mid clamp
 40/50mm width
 Material: aluminum 6005-T5
 Application: portrait panel installation



AS-TCEC
 End clamp
 50mm width
 Material: aluminum 6005-T5
 Application: landscape panel installation



AS-TCMC
 Mid clamp
 50mm width
 Material: aluminum 6005-T5
 Application: landscape panel installation



AS-R-16 / AS-CB
 Rail 16# / Cross beam
 W49.50*H89.20mm
 Material: aluminum 6005-T5
 Application: portrait panel installation



AS-R-17
 Rail 17#
 W63.30*H97.20mm
 Material: aluminum 6005-T5
 Application: landscape panel installation



AS-AS-2
 Aluminum Support
 W60*H70mm
 Material: aluminum 6005-T5



AS-AS-3 / AS-AL-B
 Aluminum Support
 W35*H60mm
 Material: aluminum 6005-T5
 Application: landscape panel installation



AS-RS-16
 Rail 16# & Rail 17# splice
 L=220mm
 Material: aluminum 6005-T5
 self drilling bolt
 M6.3*25mm 8pcs
 Application: AS-R-16/17



AS-AUB-1
 UT2 beam
 W100*H90*T2.4mm
 Material: aluminum 6005-T5



AS-AL-RC-02
 Rail clip
 L90*W45.5*H42.3mm
 Material: aluminum 6005-T5
 Allen bolt M8*25mm 2pcs



AS-OB
 Open Base
 L153*W163*H105mm
 Material: aluminum 6005-T5
 Hexagon bolt M12*110mm 2pcs
 M12*35mm 2pcs



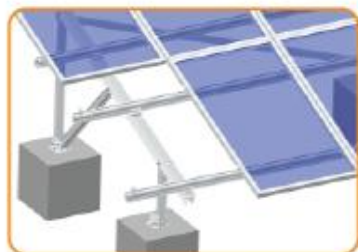
open base & post connection



bracing installation



beam & rail connection



Portrait panel installation



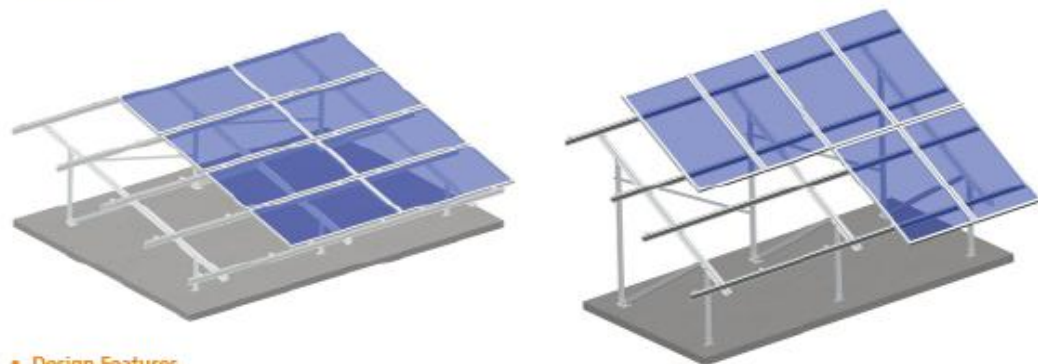
Landscape panel installation



AS-VS2
 V structure
 Material: aluminum 6005-T5
 Pre-assembled



AS-KS2
 K structure
 Material: aluminum 6005-T5
 Pre-assembled



Design Features

Single slot U beam is more economical and most suitable for lower wind load and snow load.



bracing installation



rail splice

Foundation type:

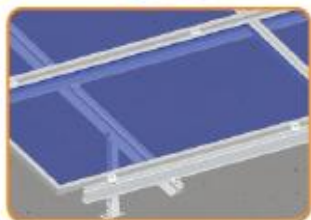
Pile driven, ground screw, concrete pad.

Surface treatment:

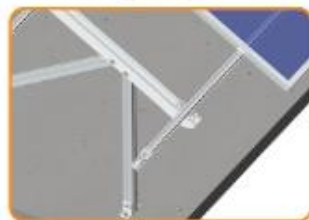
10µm thk. Anodized aluminum, stainless steel 304 bolts and nuts.

Design Strength:

The structure designed according to the wind load or snow load request.



Landscape panel



Portrait panel

MAIN COMPONENTS



AS-TEC
End clamp
40/50mm width
Material: aluminum 6005-T5
Application: portrait panel installation



AS-TMC
Mid clamp
40/50mm width
Material: aluminum 6005-T5
Application: portrait panel installation



AS-TCEC
End clamp
50mm width
Material: aluminum 6005-T5
Application: landscape panel installation



AS-TCMC
Mid clamp
50mm width
Material: aluminum 6005-T5
Application: landscape panel installation



AS-TR65-01
T65 rail 01#
W53.6*H73mm
Material: aluminum 6005-T5
Application: landscape panel installation



AS-TRS-65
TR65 rail splice
L=200mm
Material: aluminum 6005-T5 self drilling bolt
M6.3*25mm 8pcs
Application: AS-TR65



AS-TR85-01
T85 rail 01#
W53.6*H93mm
Material: aluminum 6005-T5



AS-TRS-85
TR85 rail splice
L=200mm
Material: aluminum 6005-T5 self drilling bolt
M6.3*25mm 8pcs
Application: AS-TR85



AS-TR93
T105 rail
W48.5*H93mm
Material: aluminum 6005-T5



AS-AS-4
Aluminum Support
W45*H60mm
Material: aluminum 6005-T5



AS-AUB-4T
UT beam
W51.4*H93mm
Material: aluminum 6005-T5



AS-TEP-2
Enforcement pipe
W29.2*H40mm
Material: Anodized aluminum 6005-T5
T bolt M8*20mm 1pcs



AS-TEP-3
Enforcement pipe
W23.5*H45mm
Material: aluminum 6005-T5



AS-KC-02
Clip
L=50mm
Material: aluminum 6005-T5
Allen bolt M8*25mm 1pcs



Pre-assembled structure AS-V53
V structure
Material: aluminum 6005-T5



AS-OB3
Open Base
L150*W134*H80mm
Material: aluminum 6005-T5
Hexagon bolt
M10*90mm 2pcs

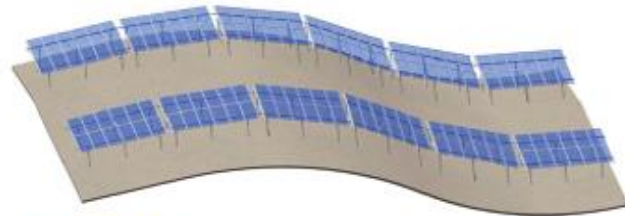


AS-OB3-2
Open Base
L60*W34*H80mm
Material: aluminum 6005-T5
Hexagon bolt
M10*90mm 1pcs



Design Features

- ① Suitable for heavy snow region.
- ② Flexible installation is most suitable for slopping mountain.
- ③ Various design of profile for different strength requirement and installation method.



AS-W-WS
W structure



Foundation type:

Pile driven, ground screw, concrete pad.

Surface treatment:

10µm thk. Anodized aluminum, stainless steel 304 bolts and nuts.

Design Strength:

The structure is designed according to the wind load or snow load request.



portrait view



panel and rail installation



bracing connection

Rail

AS-R-19

Rail 19#
W55.5*H105mm
Material:
aluminum 6005-T5



AS-R-20 / AS-CB2

Rail 20# / Cross beam
W49.50*H89.20mm
Material:
aluminum 6005-T5



AS-R-20B

Rail 20B#
W49.50*H106mm
Material:
aluminum 6005-T5

MAIN COMPONENTS



AS-R-21
Rail 21#
W47.8*H100mm
Material: aluminum 6005-T5



AS-R-21B
Rail 21B#
W47*H93.3mm
Material: aluminum 6005-T5



AS-R-23
Rail 23#
W54.4*H92.5mm
Material: aluminum 6005-T5

Aluminum main support / Side post



AS-AS-2
Aluminum Support
W60*H70mm
Material: aluminum 6005-T5



AS-AS-5
Aluminum Support (T nut)
W59.4*H59.4mm
Material: aluminum 6005-T5



AS-AS-8
Aluminum Support (D nut)
W59.4*H59.4mm
Material: aluminum 6005-T5



AS-AS3
Aluminum Support
W35*H59.4mm
Material: aluminum 6005-T5



AS-W-AS3
Aluminum Support
W40*H59.4mm
Material: aluminum 6005-T5

Grounding



AS-W-H01
W rail 01#
W50.2*H105mm
Material:
aluminum 6005-T5



AS-W-H03
W rail 3#
W50.2*H105mm
Material:
aluminum 6005-T5



AS-W-H03-T
W rail 3#-T
W50.2*H105mm
Material:
aluminum 6005-T5



AS-W-H04
W rail 4#
W60.2*H110mm
Material:
aluminum 6005-T5



AS-WHC-01
Rail jointer W1#
L=300mm
Material:
aluminum 6005-T5
Self drilling bolt
M6.3*25mm 8pcs



AS-WHC-03
W Rail 3# Rail jointer
L=300mm
Material: aluminum 6005-T5
Self drilling bolt
M6.3*25mm 8pcs
Application: AS-W-H03, AS-W-H03-T



AS-WHC-04
W Rail 4# Rail jointer
L=300mm
Material: aluminum 6005-T5
Self drilling bolt
M6.3*25mm 8pcs
Application: AS-W-H04, AS-W-H04

Accessories



AS-AL-AC
Angle Cap
L152*W163mm
Material:
aluminum 6005-T5
Hexagon bolt
M12*100mm 1pcs



AS-AL-SC
Stringer Clip
L=90mm
Material:
aluminum 6005-T5
Allen bolt
M8*30mm 2pcs



AS-AL-B5-T
Beam Slider
L=50/60mm
Material:
aluminum 6005-T5
Hexagon bolt
M12*90mm 1pcs
T bolt M8*25mm 2pcs



AS-AL03-BJ-2
Beam Jointer
L=50/60mm
Material:
aluminum 6005-T5
Allen bolt M8*25mm 2pcs
M8*55mm 1pcs
T bolt M8*20mm 2pcs



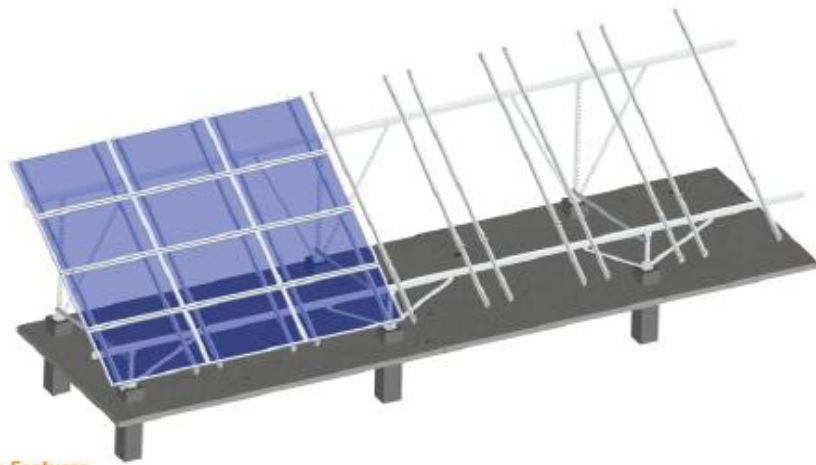
AS-ST-3
Anti Slider
L50*W44.6*H7.3mm
Material:
aluminum 6005-T5
Hexagon bolt M8*20mm 2pcs



AS-OB-2
Open Base
L170*W163mm
Material: aluminum 6005-T5
Hexagon bolt M12*110mm 3pcs,
M12*35mm 2pcs

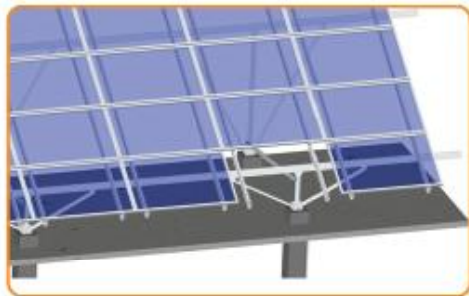


AS-W-BC-01
Panel Fixing
L=30mm
Material:
aluminum 6005-T5
T bolt M8*20mm 1pcs



Design Features

- ① Most suitable for large span of footing such as 4 meters.
- ② W structure part will be pre-assembled



Foundation type:

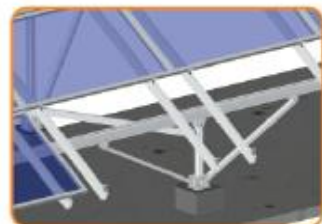
Pile driven, ground screw, concrete pad.

Surface treatment:

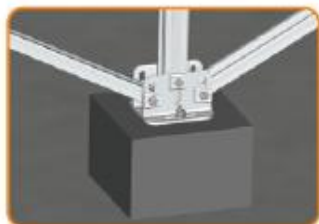
10um thk. Anodized aluminum, stainless steel 304 bolts and nuts.

Design Strength:

The structure is designed according to the wind load or snow load request.



W structure



Open base



rail and beam connection

MAIN COMPONENTS



AS-TEC
End clamp
40/50mm width
Material:
aluminum 6005-T5



AS-TMC
Mid clamp
40/50mm width
Material:
aluminum 6005-T5



AS-KC-02
Clip
L=50mm
Material: aluminum 6005-T5
Allen bolt M8*25mm 1pcs



AS-AS-3 / AS-AL-B
Aluminum Support
W35*H60mm
Material:
aluminum 6005-T5



AS-AS-5
Aluminum Support (T nut)
W59.4*H59.4mm
Material:
aluminum 6005-T5



AS-AS3
Aluminum Support
W35*H59.4mm
Material:
aluminum 6005-T5



AS-TR-D32
Aluminum beam 32°
W50*H105mm
Material:
aluminum 6005-T5



AS-WHC-03
W Rail 3# Rail jointer
L=300mm
Material: aluminum 6005-T5
Self-tapping screw
M6.3*25mm 8pcs



AS-SAB-8-50-T
M8*50mm Bolt Set
Material:
SUS 304 bolt,
aluminum 6005-T5 T nut
Allen bolt M8*50mm



AS-AL-BS-T
Beam Slider
L60*W68.4*H98.5mm
Material: aluminum 6005-T5
Hexagon bolt
M12*90mm 1pcs



AS-AL-BS-100-T
Beam Slider
L100*W68.4*H98.5mm
Material: aluminum 6005-T5
Hexagon bolt
M12*90mm 1pcs
T bolt M8*25mm 4pcs



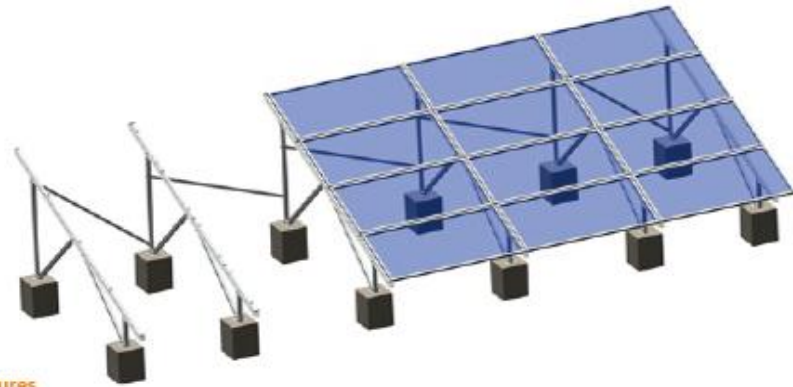
AS-AL-BS-110-T
Beam Slider
L110*W68.4*H98.5mm
Material: aluminum 6005-T5
Hexagon bolt
M12*90mm 1pcs
T bolt M8*25mm 4pcs

AS-W02-VS
V structure



AS-W02-WS
W structure





• Design Features

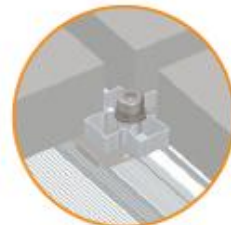
- ① Adaptable for various panel dimensions and terrains.
- ② Module arrangement can be freely changed based on different fields.
- ③ Preassembly structure saves installation time and labour costs.
- ④ Flexible installation for different wind loads.



Mid clamp



End clamp



Position clamp

• Foundation type:

Pile driven, ground screw, concrete pad.

• Surface treatment:

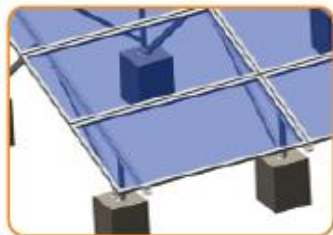
10um thk. anodized aluminum 6005-T5, stainless steel 304 bolts and nuts.

• Design Strength:

The structure is designed according to the wind load or snow load request.

• Certification:

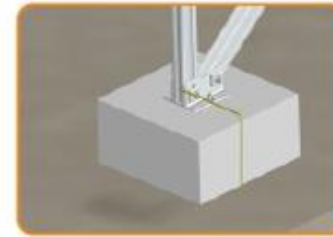
Australia AS/NZS 1170.2-Wind load report; SGS report-Chemical & Physical test.



Side view



Bracing



Grounding



AS-EC3540-L80
End clamp
80mm width
Material: aluminum 6005-T5



AS-DMC
Mid clamp
40/50mm width
Material: aluminum 6005-T5



AS-LPS
Position clamp
Cutting length=10mm
Material: aluminum 6005-T5
Allen bolt M8*30mm 1pcs



AS-SB-6.3x2.5
Self-tapping bolt
M6.3*25mm
Material: SUS 410



AS-KS3
K structure
Material: aluminum 6005-T5



AS-AS-4
Aluminum Support
W45*H60mm
Material:
aluminum 6005-T5



AS-TEP-3
Enforcement pipe
W23.5*H45mm
Material:
aluminum 6005-T5



AS-AUB-4D
UT beam
W52*H93mm
Material:
aluminum 6005-T5



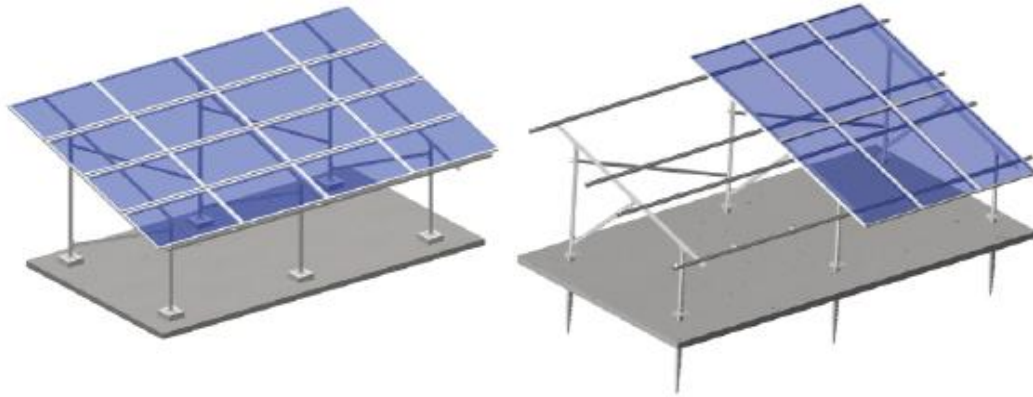
AS-AUB-4T
UT beam
W51.4*H93mm
Material:
aluminum 6005-T5



AS-OB3
Open Base
L150*W134*H80mm
Material:
aluminum 6005-T5
Hexagon bolt
M10*90mm 2pcs

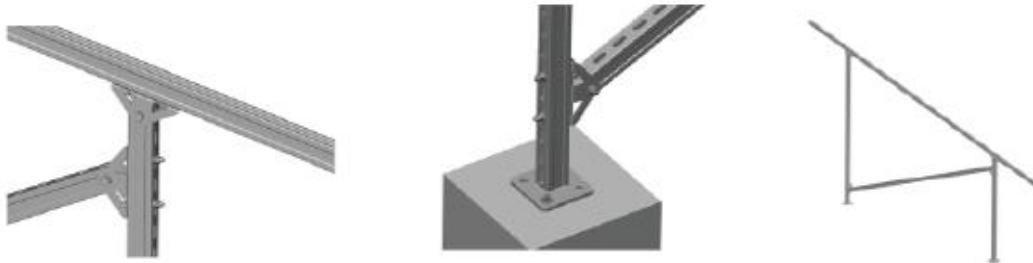


AS-OB3-2
Open Base
L60*W134*H80mm
Material:
aluminum 6005-T5
Hexagon bolt
M10*85mm 1pcs



Design Features

- ① No need welding, the structure installed with bolts.
- ② Panel orientation can be installed landscape or portrait.



Surface treatment:

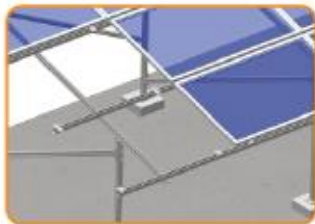
80µm thk. Hot dipped galvanizing steel, 10µm thk. Anodized aluminum, stainless steel 304 or steel Q235B bolts and nuts.

Design Strength:

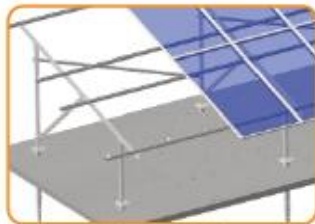
The structure is designed according to the wind load or snow load request.

Certification:

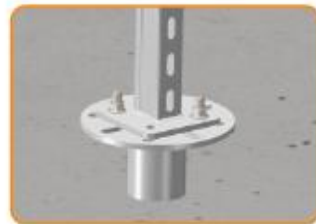
Japanese JIS, Australia AS/NZS 1170.2-Wind load report; SGS report-Chemical&Physical test.



Panel fixed landscape



Panel fixed portrait



Steel post and ground screw connection

MAIN COMPONENTS



AS-CTEC-P
C steel end clamp with plastic cup
40/50mm width
Material: aluminum 6005-T5,
Steel Q235 T nut



AS-CTMC-P
C steel mid clamp with plastic cup
40/50mm width
Material: aluminum 6005-T5,
Steel Q235 T nut



AS-BCP-C52
Base C52 Post
Base plate: L120*W120mm
C52 section: W41*H52mm
Material:
hot dipped galvanized steel
Application: Flat roof / ground



AS-BCP-C62
Base C62 Post
Base plate: L120*W120mm
C62 section: W42*H61mm
Material:
hot dipped galvanized steel
Application: Flat roof / ground



AS-C41x52
C41x52 section
W41*H52*T2mm
Material: ZM steel
Application: bracing



AS-C62
C41x62 section
W41*H62mm
Material: ZM steel



AS-C62-PTB / AS-C62-BTB
Post / Bracing Triangle bracket
L150*W48*H60mm
Material:
hot dipped galvanized steel
Allen bolt M10*30mm 2pcs
Hexagon bolt M12*70mm 1pcs



AS-Z-A017
C41x62 splice
L200*W49.5*H58mm
Material: ZAM Steel
Allen bolt M10*30mm with flange nut 4pcs
Application:
AS-C41x41, AS-C41x52, AS-C41x62



AS-PEB-3
Panel end bracket
50mm width
Material: aluminum 6005-T5
Allen bolt M8*20mm 1pcs, M8*25mm 1pcs



AS-PIB-3
Panel mid bracket
50mm width
Material: aluminum 6005-T5
Allen bolt M8*20mm 2pcs, M8*25mm 1pcs

Pre-assembly structure

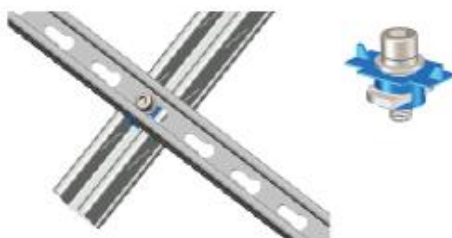


AS-HB-10-30-TN
Hexagon bolt M10*30mm with T nut
Material: SUS bolt + Aluminum T nut
Hexagon bolt M10*30mm



Design Features

- ① Triangle bracket: post connection, bracing connection.
- ② Steel T nut with plastic cup set: rail connection.



Surface treatment:

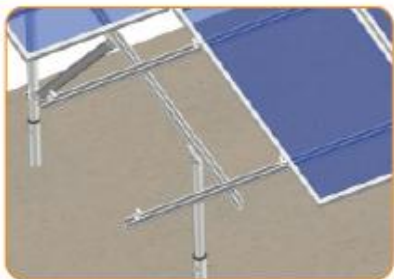
80μm thk. Hot dipped galvanizing steel, 10μm thk. Anodized aluminum, stainless steel 304 bolts and nuts.

Design Strength:

The structure is designed according to the wind load or snow load request.

Certification:

Japanese JIS, Australia AS/NZS 1170.2-Wind load report; SGS report-Chemical & Physical test.



Panel fixed with normal end & middle clamp



Pipe sleeve: for fixing the bracing on the round post

MAIN COMPONENTS



AS-TEC

End clamp
40/50mm width
Material: aluminum 6005-T5
Application: Framed panel, Aluminum rail - T module series



AS-TMC

Mid clamp
40/50mm width
Material: aluminum 6005-T5
Application: Framed panel, Aluminum rail - T module series



AS-C41x62

C41x62 section
W41*H62mm
Material: ZM steel



AS-Z-A017

C41x62 splice
L200*W49.5*H58mm
Material: ZM steel
Allen bolt M10*30mm with flange nut 4pcs
Application:
AS-C41x41, AS-C41x52, AS-C41x62



AS-C62-PTB

Bracing Triangle bracket
L150*W48*H60mm
Material: hot dipped galvanized steel
Allen bolt M10*30mm 2pcs / M10*30mm 2pcs
Hexagon bolt M12*70mm 1pcs



AS-P60-PTB

Pipe Triangle bracket
L150*W68*H65.5mm
Material: hot dipped galvanized steel
Allen bolt M10*30mm 2pcs
Hexagon bolt M12*90mm 1pcs



AS-PS

Pipe Sleeve
φ 60mm
Material: hot dipped galvanized steel
Hexagon bolt M12*35mm 4pcs, M12*70mm 1pc
Application: AS-TEP, C62 bracing connection



AS-SAB-8-30-5TN

M8*30 bolt set with steel nut and plastic cup
Allen bolt M8*30mm, 35.3*20*4mm
Material:
SUS 304 T nut, plastic cup



AS-TCP

Cross pipe / front feet / back feet
φ 60mm
Material: hot dipped galvanized steel



AS-P60-SR

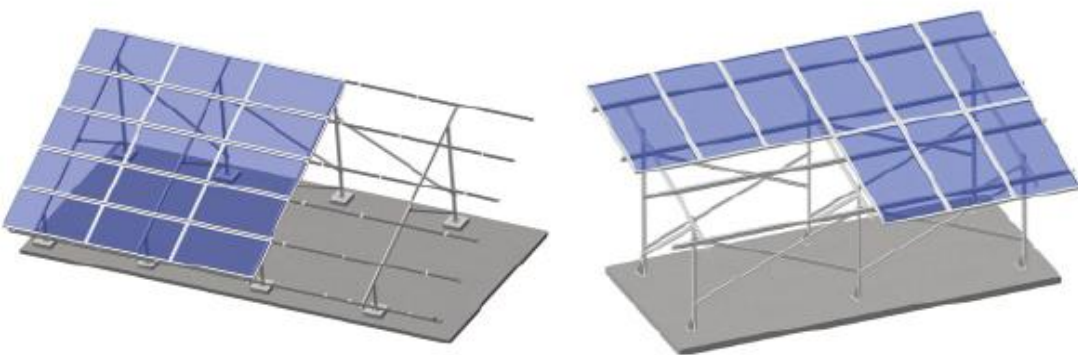
φ 60 pipe seal ring
φ 60mm
Material: rubber



Pre-assembly structure

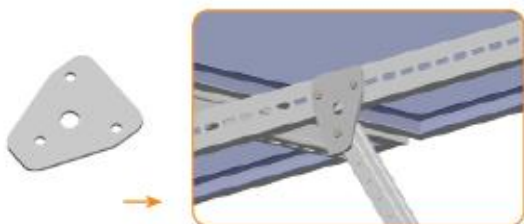
AS-GS

Ground screw without flange
φ 76x2500mm
Outer diameter: φ 48/60/76mm
Length: 1000mm-3000mm
Material: hot dipped galvanized steel

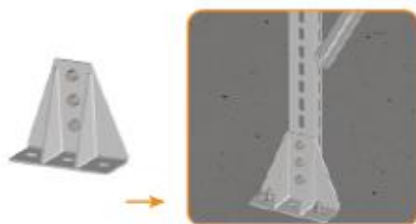


Design Features

- ① The structure installation is flexible which is apply to landscape and portrait panel.
- ② Suitable for large footing span while stronger strength.



Steel plate for landscape V structure connection



Steel base kit

Surface treatment:

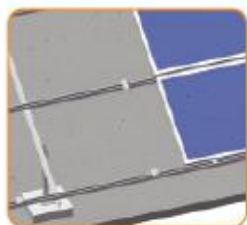
80µm thk. Hot dipped galvanizing steel, 10µm thk. Anodized aluminum, stainless steel 304 bolts and nuts.

Design Strength:

The structure is designed according to the wind load or snow load request.

Certification:

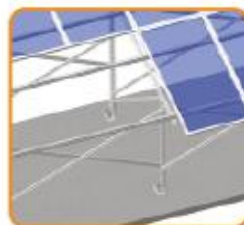
Japanese JIS, Australia AS/NZS 1170.2-Wind load report; SGS report-Chemical & Physical test.



Landscape panel fixed via panel inter / end bracket



Portrait panel fixed via allen bolt M8*20



MAIN COMPONENTS



AS-CTEC-P

C steel end clamp with plastic cup
40/50mm width
Material: aluminum 6005-T5,
Steel Q235 T nut



AS-CTMC-P

C steel mid clamp with plastic cup
40/50mm width
Material: aluminum 6005-T5,
Steel Q235 T nut



AS-BCP-C80

Base C80 Post
Base plate: L162*W162*H8mm
C80 section: W80*H40mm
Material: hot dipped galvanized steel
Application: flat roof / ground



AS-BK

Base kit
L200*W80*H190mm
Hexagon bolt M12*30mm 3pcs
Material:
hot dipped galvanized steel



AS-C41x52

C41x52 section
W41*H52*T2mm
Material: ZM steel
Application: bracing



AS-C62

C41x62 section
W41*H62mm
Material: ZM steel



AS-C80x40

C80x40 section
W80*H40mm
Material: ZM steel



AS-Z-A018

C80 splice
L200*W74.5*H32mm
Material: ZM Steel
Hexagon bolt M10*30mm 6pcs
Application: AS-C80



AS-PEB-3

Panel end bracket
50mm width
Material: aluminum 6005-T5
Allen bolt M8*20mm 1pcs, M8*25mm 1pcs



AS-PIB-3

Panel mid bracket
50mm width
Material: aluminum 6005-T5
Allen bolt M8*20mm 2pcs, M8*25mm 1pcs

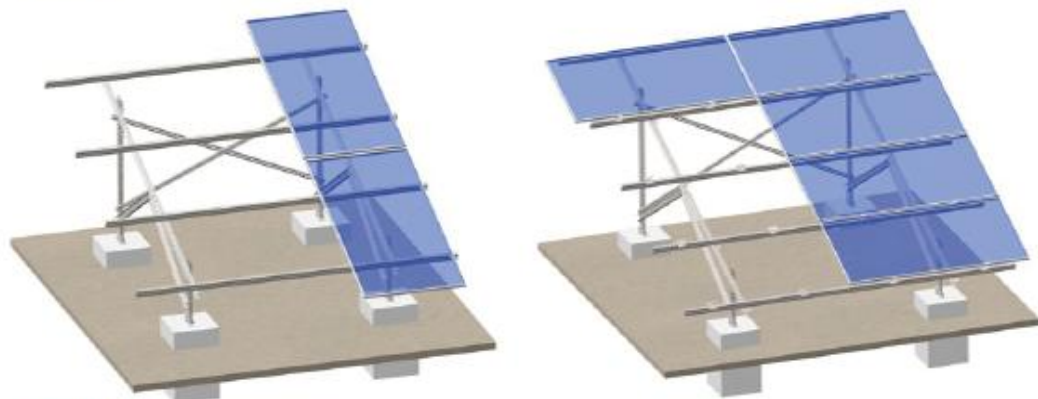


The elements of V structure will be packed separately which saves the package volumn.



AS-HB-10-25

Hexagon bolt M10x25
Material: hot dipped galvanized steel
Application: Connect post and stringer, bracing and post

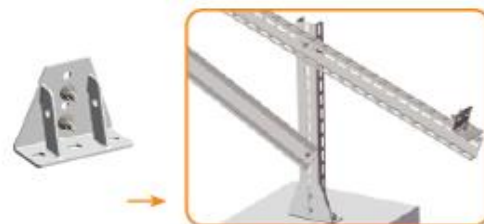


Design Features

- ① The structure installation is flexible which is apply to landscape and portrait panel.
- ② Suitable for large footing span with stronger strength.
- ③ No need welding and punching.



Steel plate for K structure connection



Steel base kit for concrete foundation

Surface treatment:

Hot dipped zinc aluminum magnesium alloy coated steel, 10μm thk. Anodized aluminum, stainless steel 304 bolts and nuts.

Design Strength:

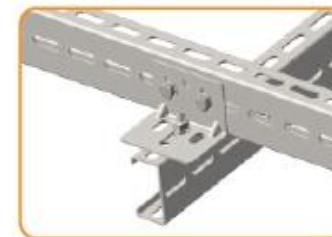
- ① The structure is designed according to the wind load or snow load request.
- ② With good performance of structure strength, stability and anti-corrosion, compatible with varied solar modules.

Certification:

TUV, Japanese JIS, Australia AS/NZS 1170.2 wind load report; SGS report-Chemical & Physical test



Portrait solar panel orientation
Girder and rail connected via Hex bolt set M10*30.



Landscape solar panel orientation
Girder and rail connected via L70x70 connector.



AS-C50x30
C50x30 profile
W50*H30mm
Material: ZM steel



AS-C80x40
C80x40 profile
W80*H40mm
Material: ZM steel



AS-Z-A018
C80x40 profile splice
W80*H40mm
Material: ZM steel
Hexagon bolt M10*30mm 6pcs



AS-I-A007
Base kit
L180*W70*H134.75mm
Material: HDG Q235
Hexagon bolt M12*35mm 2pcs



AS-D-P001
L70x70 connector
L100*W70*H70mm
Material: ZM steel
Hexagon bolt M10*30mm 3pcs
Application: connect post and stringer



AS-D-P002
L100x50 connector
L160*W50*H100mm
Material: ZM steel
Hexagon bolt M10*30mm 2pcs,
Hexagon bolt M12*35mm 2pcs
Application: connect post and stringer



AS-ZEC01
C80 panel end bracket
L115*W90*H13.5mm
Material: ZM steel
Allen bolt M8*25mm 2pcs (SUS304),
End clamp(Aluminum 6005-T5)



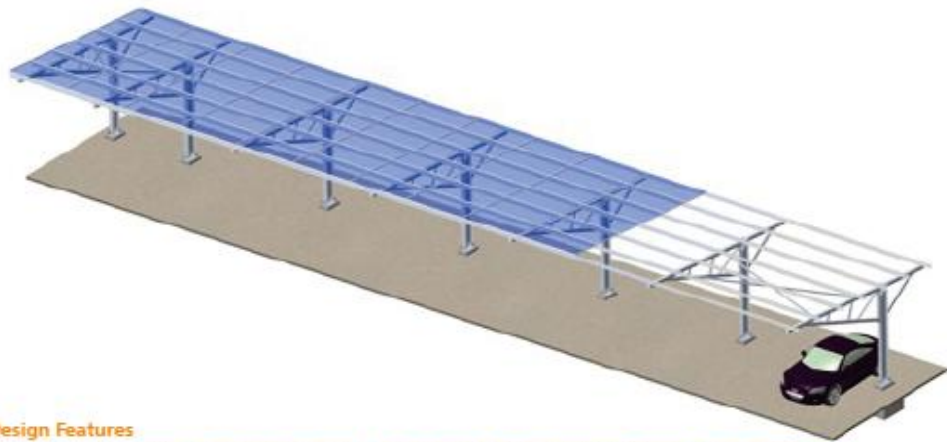
AS-ZMC01
C80 panel inter bracket
L115*W90*H13.5mm
Material: ZM steel
Allen bolt M8*25mm 2pcs(SUS304),
26.5mm slot width mid clamp(Aluminum 6005-T5)



M8*20 allen bolt set
Allen bolt M8*20mm + tooth lock washer
+ large flat washer + Hex nut
Material: SUS 304
Application: fixing panel to the C profile



M10*30 hex bolt set
Hexagon bolt M10*30mm + flat washer 2pcs
+ spring washer + Hex nut
Material: SUS 304
Application: connect bracing and post,
girder and rail



• Design Features

- ① Hot dipped galvanized steel structure which is strong enough to withstand heavy wind load and snow load
- ② Cost-effective and suitable for both residential and commercial solar panel carport.
- ③ No need extra welding and cutting.
- ④ Maximum to support two cars per span.



• Surface treatment:

80µm thk. Hot dipped galvanizing steel, 10µm thk. Anodized aluminum, stainless steel 304 bolts and nuts.

• Design Strength:

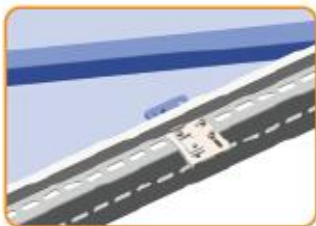
The structure is designed according to the wind load or snow load request.

• Certification:

Japanese JIS, Australia AS/NZS 1170.2-Wind load report; SGS report-Chemical & Physical test.



Fix the rails



Fix the panels



Clamp for fixing panels

MAIN COMPONENTS



AS-Z-A003-ZJ01
End Clamp
L=160mm
Material: ZM steel



AS-Z-A003-ZJ02
Mid Clamp
L=160mm
Material: ZM steel



AS-Z-C120
C120x60 section
W120*H60mm
Material: ZM steel



AS-Z-A004
Rail splice
L=220mm
Material: ZM steel
2 flat +1 spring washer
+ M12*35mm nut



AS-I-A010
Side Support
Material:
hot dipped galvanized steel Q235



AS-I-A012
Connector
140x210x6mm
Material: hot dipped galvanized steel Q235
Hexagon bolt M12*35mm 6pcs,
M12*160mm 2pcs



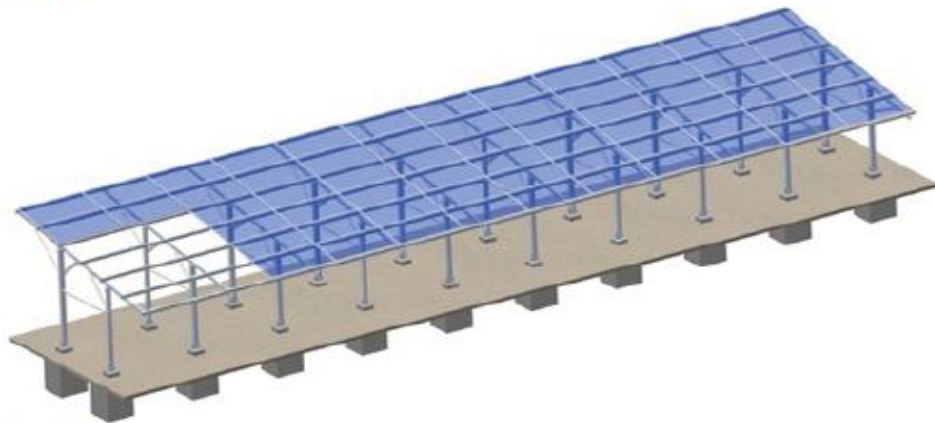
AS-I-SQ50x5884
Square Support
50x50x2.5mm
Material:
hot dipped galvanized steel Q235



AS-I-SQ100x1590
Square support
100x100x2.75mm
Material:
hot dipped galvanized steel Q235

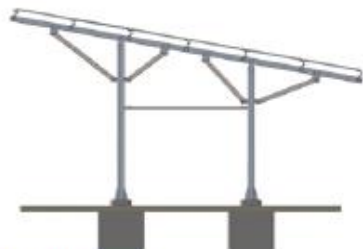


AS-I-H350x175
Post
H350x175mm
Material:
hot dipped galvanized steel Q235



• Design Features

- ① Hot dipped galvanized steel structure which is strong enough to withstand heavy wind load and snow load.
- ② Cost-effective and suitable for both residential and commercial solar panel carport.
- ③ No need extra welding and cutting.
- ④ Customized to support one car or two cars as per clients' requests.



• Surface treatment:

80µm thk. Hot dipped galvanizing steel, 10µm thk. Anodized aluminum, stainless steel 304 bolts and nuts.

• Design Strength:

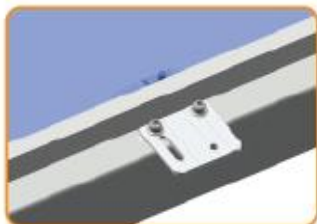
The structure is designed according to the wind load or snow load request.

• Certification:

Japanese JIS, Australia AS/NZS 1170.2-Wind load report; SGS report-Chemical & Physical test.



Support structure



End clamp for fixing panels



Mid clamp for fixing panels

MAIN COMPONENTS



AS-A-A003-ZJ01
End Clamp
L=160mm
Material: SCS440



AS-A-A003-01
End Clamp
L=130mm
Material:
hot dipped galvanized steel Q235



AS-I-A015
Connector
140x200mm
Material: HDG steel Q235
Frang nut with flat washer
M12*90mm 2pcs,
Frang nut M12*150mm 3pcs



AS-I-A016
Connector
140x210x6mm
Material: HDG steel Q235
Frang nut with flat washer
M12*80mm 2pcs, M12*35mm 2pcs



AS-I-A017
Connector
L74x42mm
Material: HDG steel Q235
Frang nut with flat washer
M12*35mm 2pcs, M12*80mm 2pcs



AS-I-A018
Rail Splice
L=200mm
Material: HDG steel Q235
Hexagon bolt M12x30mm 16pcs



AS-I-ST100x50
Beam
100x50x3.75mm
Material:
hot dipped galvanized steel Q235



AS-I-ST120
Post
120x120mm
Material:
hot dipped galvanized steel Q235

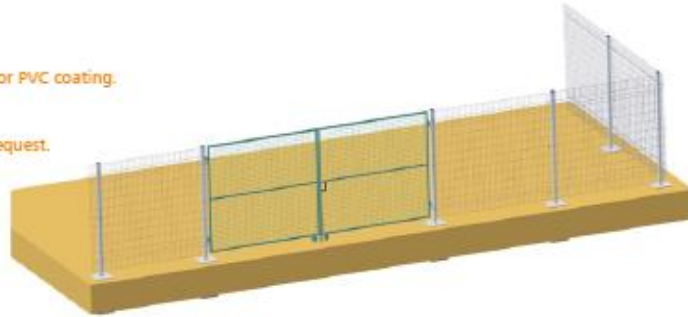


AS-Z-C80
C80x40 section
80x40x2.3mm
Material: ZM steel



AS-Z-C100x50
C100x50 section
100x50x2.5mm
Material: ZM steel

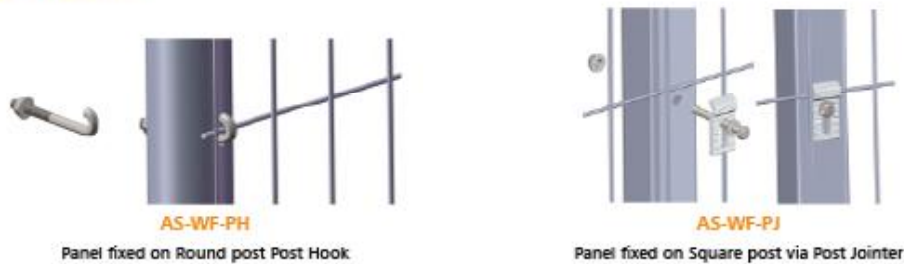
- Surface treatment:
80µm thk. Hot dipped galvanizing steel or PVC coating.
- Color:
Green, white, brown, blue, black or as request.
- Foundation type:
Pile driven, concrete floor.



• Post option



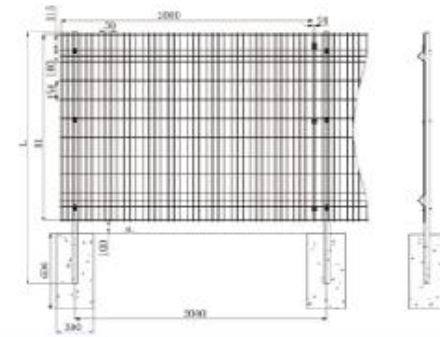
• Post installation



• Panel installation

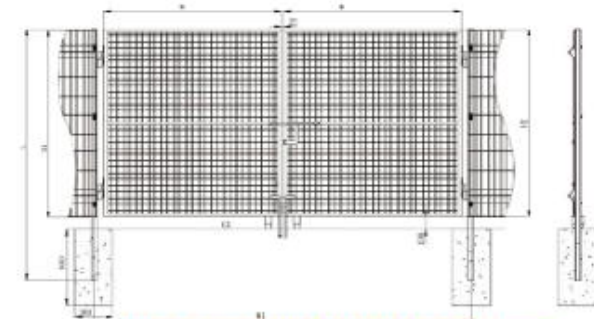


• Dimension



• Post and panel

Round Post (mm) ○	Square Post (mm) □	Mesh size (mm)	Wire Diameter (mm)	Length (mm)	H1 (mm)	L (mm)
φ 48×3	40×40×2	50×150	φ 3.2	2000	1500	2000
φ 48×3	40×40×2	50×150	φ 3.2	2000	1800	2300
φ 48×3	40×40×2	50×150	φ 3.2	2000	1200	1700



Wire diameter can be changed as requirement

• Gate

Gate	Round Post (mm) ○	Square Post (mm) □	Mesh size (mm)	Wire Diameter (mm)	W1 (mm)	W (mm)	Height (mm)
Single	φ 48×3	40×40×2	50×50/50×150	φ 3.2/ φ 4.0	1000		1200/1500/1800
Double	φ 48×3	40×40×2	50×50/50×150	φ 3.2/ φ 4.0	2000	910	1200/1500/1800
	φ 48×3	40×40×2	50×50/50×150	φ 3.2/ φ 4.0	3000	1410	1200/1500/1800
	φ 48×3	80×80×2	50×50/50×150	φ 3.2/ φ 4.0	3000	1390	1200/1500/1800
	φ 48×3	40×40×2	50×50/50×150	φ 3.2/ φ 4.0	4000	1910	1200/1500/1800
	φ 48×3	80×80×2	50×50/50×150	φ 3.2/ φ 4.0	4000	1890	1200/1500/1800

• Aluminum rail - D nut series:



AS-DR-05

D rail 5#
W60*H60mm
Material:
aluminum 6005-T5



AS-DR-06

D rail 6#
W49.3*H93.2mm
Material:
aluminum 6005-T5



AS-R-19

Rail 19#
W55.5*H105mm
Material:
aluminum 6005-T5

AS-R-22

Rail 22#
W42*H30mm
Material:
aluminum 6005-T5



AS-R-23

Rail 23#
W54.4*H92.5mm
Material:
aluminum 6005-T5



AS-TR-35B

TR-35B rail
W93*H120mm
Material:
aluminum 6005-T5

• Aluminum rail - E module series:



AS-R-02

Rail 2#
W30.60*H57.39mm
Material:
aluminum 6005-T5



AS-R-06

Rail 6#
W40.00*H57.39mm
Material:
aluminum 6005-T5



AS-R-08

Rail 8#
WX54*WS78*H573mm
Material:
aluminum 6005-T5

AS-R-11

Rail 11#
W31.80*H57.40mm
Material:
aluminum 6005-T5



AS-R-12

Rail 12#
W41.85*H18.7mm
Material:
aluminum 6005-T5



AS-R-13

Rail 13#
W42.20*H65.00mm
Material:
aluminum 6005-T5

AS-R-18

Rail 18#
W50.22*H90.00mm
Material:
aluminum 6005-T5



AS-R-21

Rail 21#
W47.8*H100mm
Material:
aluminum 6005-T5



AS-R-21B

Rail 21B#
W47*H93.3mm
Material:
aluminum 6005-T5

• Aluminum rail - T module series:



AS-R-14

Rail 14#
W55.50*H100.00mm
Material:
aluminum 6005-T5



AS-R-16 / AS-CB

Rail 16# / Cross beam
W49.50*H89.20mm
Material:
aluminum 6005-T5



AS-R-17

Rail 17#
W63.30*H97.20mm
Material:
aluminum 6005-T5

AS-R-20 / AS-CB2

Rail 20# / Cross beam
W49.50*H89.20mm
Material:
aluminum 6005-T5



AS-R-20B

Rail 20#
W49.50*H106mm
Material:
aluminum 6005-T5

• Aluminum rail - TR series:



AS-TR65-01

T65 rail 01#
W53.6*H73mm
Material:
aluminum 6005-T5



AS-TR85-01

T85 rail 01#
W53.6*H93mm
Material:
aluminum 6005-T5



AS-TR93

T105 rail
W48.5*H93mm
Material:
aluminum 6005-T5

AS-TR105

TR105 rail
W58.6*H105mm
Material:
aluminum 6005-T5



• Steel rail - T module series:



AS-C41x41

C41x41 section
W41*H41mm
Material: ZM steel



AS-C41x52

C41x52 section
W41*H52mm
Material: ZM steel





AS-C62
C41×62 section
W41*H62mm
Material: ZM steel



AS-C80
C80×40 section
W80*H40mm
Material: ZM steel



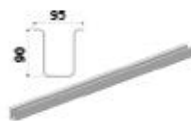
AS-C100x50
C100×50 section
W100*H50mm
Material: ZM steel



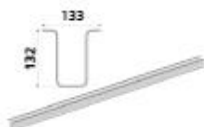
AS-Z-C100x50
C100×50 section
100x50x2.5mm
Material: ZM steel



AS-Z-C120
C120×60 section
W120*H60mm
Material: ZM steel



AS-U90×95
U90×95 hat section
Material: ZM steel
Application: post



AS-U132×133
U132×133 hat section
Material: ZM steel
Application: post



AS-RS-16
Rail 16# & Rail 17# splice
L=220mm
Material: aluminum 6005-T5
Self drilling bolt M6.3*25mm 8pcs
Application: AS-R-16/17



AS-RS-18
Rail 18# splice
L=220mm
Material: aluminum 6005-T5
Self drilling bolt M6.3*25mm 4pcs
Application: AS-R-18



AS-TRS-35B
TR-35B rail splice
W45.5*H52.8mm
Material: aluminum 6005-T5
Self drilling bolt M6.3*25mm 8pcs
Application: AS-TR-35B



AS-TRS-65
TR65 rail splice
L=200mm
Material: aluminum 6005-T5
Self drilling bolt M6.3*25mm 8pcs
Application: AS-TR65



AS-TRS-85
TR85 & TR93 rail splice
L=200mm
Material: aluminum 6005-T5
Self drilling bolt M6.3*25mm 8pcs
Application: AS-TR85



AS-TRS-105
TR105 rail splice
L=220mm
Material: aluminum 6005-T5
Self drilling bolt M6.3*25mm 8pcs
Application: AS-TR105



AS-ABS-D10
Aluminum beam 10#splice
L=220mm
Material: aluminum 6005-T5
Self drilling bolt M6.3*25mm 8pcs
Application: AS-AB-D10



AS-WHC-01
Rail jointer W1#
L=300mm
Material: aluminum 6005-T5
Self drilling bolt M6.3*25mm 8pcs



AS-WHC-03
W Rail 3# Rail jointer
L=200mm
Material: aluminum 6005-T5
Self drilling bolt M6.3*25mm 4pcs
Application: AS-W-H03, AS-W-H03-T



AS-WHC-04
W Rail 3# Rail jointer
L=200mm
Material: aluminum 6005-T5
Self drilling bolt M6.3*25mm 4pcs
Application: AS-W-H04, AS-W-H04B

• Rail Splice



AS-RS-02
E rail splice
L150*W21*H10mm
Material: aluminum 6005-T5
Allen screw M8*25 2pcs
Application: aluminum rail - e module series



AS-RS-08
Rail 8# splice
L=300mm
Material: aluminum 6005-T5
Self drilling bolt M6.3*25mm 8pcs
Application: AS-R-08



AS-RS-13
Rail 13# splice
L=300mm
Material: aluminum 6005-T5
Self drilling bolt M6.3*25mm 8pcs
Application: AS-R-13



AS-RS-14
Rail 14# splice
L=220mm
Material: aluminum 6005-T5
Self drilling bolt M6.3*25mm 8pcs
Application: AS-R-14

• Clamps

AS-CEC

E rail end clamp
50mm width
Material:
aluminum 6005-T5
Application: Framed panel,
Aluminum rail - E module series



AS-DEC

D rail end clamp
40/50mm width
Material:
aluminum 6005-T5
Application: Framed panel,
Aluminum rail - D nut series



AS-TEC

End clamp
40/50mm width
Material:
aluminum 6005-T5
Application: Framed panel,
Aluminum rail - T module series

AS-CMC

E rail end clamp
50mm width
Material:
aluminum 6005-T5
Application: Framed panel,
Aluminum rail - E module series



AS-DMC

D rail mid clamp
40/50mm width
Material:
aluminum 6005-T5
Application: Framed panel,
Aluminum rail - D nut series



AS-TMC

Mid clamp
40/50mm width
Material:
aluminum 6005-T5
Application: Framed panel,
Aluminum rail - T module series

AS-CTEC-P

C steel end clamp with plastic cup
40/50mm width
Material: aluminum 6005-T5
SUS 304 T nut
Application: Framed panel,
Aluminum rail - T module series



AS-EC

E rail end clamp
40/50mm width
Material:
aluminum 6005-T5
Application: Framed panel,
Aluminum rail - E module series



AS-TCEC

End clamp
50mm width
Material:
aluminum 6005-T5
Application: Framed panel,
Aluminum rail - T module series

AS-CTMC-P

C steel mid clamp with plastic cup
40/50mm width
Material: aluminum 6005-T5
SUS 304 T nut
Application: Framed panel,
Aluminum rail - T module series



AS-MC

E rail mid clamp
40/50mm width
Material:
aluminum 6005-T5
Application: Framed panel,
Aluminum rail - E module series



AS-TCMC

Mid clamp
50mm width
Material:
aluminum 6005-T5
Application: Framed panel,
Aluminum rail - T module series

AS-AL-CEB

C steel end bracket
L50*W100mm
Material: aluminum 6005-T5
Allen bolt M8*30mm 1pcs
Application: AS-C80



AS-AL-EB

End Bracket
L80*W75mm
Material:
aluminum 6005-T5
Allen bolt M8*25mm 2pcs



AS-TEC-L80

End clamp
80mm width
Material:
aluminum 6005-T5

AS-AL-CMB

C steel middle bracket
L50*W100mm
Material: aluminum 6005-T5
Allen bolt M8*45mm 1pcs
Application: AS-C80



AS-AL-MB

Middle Bracket
L80*W109mm
Material:
aluminum 6005-T5
Allen bolt M8*25mm 2pcs



AS-TMC-L80

Mid clamp
80mm width
Material:
aluminum 6005-T5

AS-EC02

E rail end clamp
40/50mm width
Material:
aluminum 6005-T5



AS-EC-35/40

D rail 35/40mm panel
universal end clamp
40mm width
Material: aluminum 6005-T5
Application: Framed panel



AS-EC3540-L80

End clamp
80mm width
Material:
aluminum 6005-T5



• Beam / Supporting

AS-AUB-1

UT2 beam
W100*H90mm
Material:
aluminum 6005-T5



AS-AUB-3

UT beam
W51.4*H95mm
Material:
aluminum 6005-T5



AS-AUB-4D

UD beam
W52*H93mm
Material:
aluminum 6005-T5



AS-AUB-4T

UT beam
W51.4*H93mm
Material:
aluminum 6005-T5



AS-AB-D10/D15/D20

Aluminum beam 10*/15*/20*
W84.6*H104mm
Material:
aluminum 6005-T5



AS-W-H01

W rail 01#
W50.2*H105mm
Material:
aluminum 6005-T5



AS-W-H03

W rail 3#
W50.2*H105mm
Material:
aluminum 6005-T5



AS-W-H03-T

W rail 3#-T
W50.2*H105mm
Material:
aluminum 6005-T5



AS-W-H04

W rail 4#
W60.2*H110mm
Material:
aluminum 6005-T5



AS-TR-D32

Aluminum beam 32*
W50*H105mm
Material:
aluminum 6005-T5



AS-AS-1

Aluminum support
No. Dimension
1# W60*H70*T4mm
2# W60*H70*T3mm
3# W60*H70*T1.3mm
Material: aluminum 6005-T5



AS-AS-2

Aluminum Support
W60*H70mm
Material:
aluminum 6005-T5



AS-AS-3 / AS-AL-B

Aluminum Support
W35*H60mm
Material:
aluminum 6005-T5



AS-AS-4

Aluminum Support
W45*H60mm
Material:
aluminum 6005-T5



AS-AS-5

Aluminum Support
(T nut)
W59.4*H59.4mm
Material:
aluminum 6005-T5



<p>AS-AS-8 Aluminum Support (D nut) W59.4*H59.4mm Material: aluminum 6005-T5</p>	<p>AS-AS-13 Aluminum Support (T nut) W70*H70mm Material: aluminum 6005-T5</p>	<p>AS-AS3 Aluminum Support W35*H59.4mm Material: aluminum 6005-T5</p>
<p>AS-W-AS3 Aluminum Support (T nut) W40*H59.4mm Material: aluminum 6005-T5</p>	<p>AS-AL-B2 Enforcement pipe W40*H70mm Material: aluminum 6005-T5</p>	<p>AS-TEP Enforcement pipe W38*H38mm Material: anodized aluminum 6005-T5</p>
<p>AS-TEP-2 Enforcement pipe W29.21*H40mm Material: anodized aluminum 6005-T5 T bolt M8*20 1pcs</p>	<p>AS-TEP-3 Enforcement pipe W23.5*H45mm Material: aluminum 6005-T5</p>	

• Other Aluminum Components

<p>AS-AL-B5 Beam Slider L70*W68.4*H98.5mm Material: aluminum 6005-T5 Hex bolt M12*90mm 1pcs Allen bolt M8*25mm 2pcs Application: AS-R-16</p>	<p>AS-AL-B5-4 Beam Slider L100*W68.6*H98.5mm Material: aluminum 6005-T5 Hex bolt M12*90mm 1pcs T bolt M8*25mm 4pcs</p>	<p>AS-AL-B5-155 Beam Slider L155*W68.4*H98.5mm Material: aluminum 6005-T5 Hex bolt M12*90mm 2pcs Allen bolt M8*25mm 4pcs Application: AS-R-16</p>
<p>AS-AL-B5-T Beam Slider L70*W68.4*H98.5mm Material: aluminum 6005-T5 Hex bolt M12*90mm 1pcs T bolt M8*25mm 2pcs</p>	<p>AS-AL-B5-110-T Beam Slider L110*W68.4*H98.5mm Material: aluminum 6005-T5 Hex bolt M12*90mm 1pcs T bolt M8*25mm 4pcs</p>	<p>AS-AL-B5-155-T Beam Slider L155*W68.4*H98.5mm Material: aluminum 6005-T5 Hex bolt M12*90mm 2pcs T bolt M8*25mm 4pcs</p>
<p>AS-AL-HBS-80 Beam Slider L80*W82.4*H114mm Material: aluminum 6005-T5 Hex bolt M12*90mm 1pcs, M12*100mm 2pcs</p>	<p>AS-AL-HBS-100 Beam Slider L100*W85.7*H124mm Material: aluminum 6005-T5 Hex bolt M10*75mm 1pcs, M12*115mm 1pcs T bolt M8*20mm 4pcs</p>	<p>AS-OB Open Base L153*W163mm Material: aluminum 6005-T5 Hex bolt M12*110mm 2pcs, M12*35mm 2pcs</p>

<p>AS-OB-2 Open Base L170*W163mm Material: aluminum 6005-T5 Hex bolt M12*35mm 2pcs, M12*110mm 3pcs</p>	<p>AS-OB3 Open Base L150*W134mm Material: aluminum 6005-T5 Hex bolt M12*90mm 2pcs</p>	<p>AS-OB3-2 Open Base L60*W134mm Material: aluminum 6005-T5 Hex bolt M10*90mm 1pcs</p>
<p>AS-OB9 Open Base L80*W172.4*H105mm Material: aluminum 6005-T5 Hex bolt M10*100mm 1pcs</p>	<p>AS-OB9-2 Open Base L135*W172.4*H105mm Material: aluminum 6005-T5 Hex bolt M10*100mm 2pcs</p>	<p>AS-AL-AC Angle cap / Back Angle Cap L152*W163mm Material: aluminum 6005-T5 Hex bolt M12*100mm 1pcs</p>
<p>AS-AL-FAC Front Angle Cap L152*W163mm Material: aluminum 6005-T5 Allen bolt M12*100mm 1pcs</p>	<p>AS-BPS-01 Pipe Sleeve φ 60mm Material: aluminum 6005-T5 Hex bolt M12*35mm 2pcs, M12*70mm 1pcs</p>	<p>AS-BPS-02 Pipe Sleeve φ 60mm Material: aluminum 6005-T5 Hex bolt M12*35mm 2pcs, M12*70mm 2pcs</p>
<p>AS-VPS-01 Pipe Sleeve φ 76mm Material: aluminum 6005-T5 Hex bolt M12*35mm 2pcs, M12*70mm 1pcs</p>	<p>AS-VPS-02 Pipe Sleeve φ 76mm Material: aluminum 6005-T5 Hex bolt M12*35mm 2pcs, M12*70mm 2pcs</p>	<p>AS-VPS-05 Pipe Sleeve φ 76mm Material: aluminum 6005-T5 Hex bolt M12*35mm 2pcs, M12*70mm 2pcs</p>
<p>AS-SPS-A Pipe Sleeve Hole size: L70*W60mm Material: aluminum 6005-T5 Hex bolt M12*35mm 2pcs, M12*70mm 2pcs</p>	<p>AS-SPS-B Pipe Sleeve Hole size: L70*W60mm Material: aluminum 6005-T5 Hex bolt M12*35mm 2pcs, M12*70mm 2pcs</p>	<p>AS-LC-01 L connector L40*W49*H49mm Material: aluminum 6005-T5 Allen bolt M8*25mm 2pcs Application: Flat roof, Pole mount</p>
<p>AS-LC-01D L connector L40*W49*H49mm Material: aluminum 6005-T5 Allen bolt M8*25mm 2pcs Application: Flat roof, Pole mount</p>	<p>AS-LC-04 L connector L200*W49*H49*5.5mm Material: aluminum 6005-T5 Allen bolt M8*25mm 2pcs U bolt M10*W91*H105mm 1pcs Application: Pole mount</p>	<p>AS-LC-80 80mm L connector L80*W49*H49*5.5mm Material: aluminum 6005-T5 Allen bolt M8*25mm 2pcs, M8*80mm 2pcs Application: Pole mount</p>

 AS-TAS L connector L150mm Material: aluminum 6005-T5 Allen bolt M8*25mm 2pcs U bolt M12*W88*H105mm	 AS-KC-01 K Clip L=90mm Material: aluminum 6005-T5 Allen bolt M8*30mm 2pcs	 AS-KC-02 Clip L=50mm Material: aluminum 6005-T5 Allen bolt M8*25mm 1pcs
 AS-LC-40 L bracket L40mm Material: aluminum 6005-T5 Allen bolt M8*25mm 1pcs	 AS-LCE-100 L Clamp L=100mm Material: aluminum 6005-T5 Allen bolt M8*25mm 2pcs	 AS-LCT-100 L Clamp L=100mm Material: aluminum 6005-T5 Allen bolt M8*25mm 2pcs
 AS-PEB Panel End Bracket L=60mm Material: aluminum 6005-T5 Allen bolt M8*25mm 2pcs Self drilling bolt M6.3*25mm 1pcs Application: AS-R-18	 AS-PEB-2 Panel End Bracket L=80mm Material: aluminum 6005-T5	 AS-PEB-3 Panel end bracket 50mm width Material: aluminum 6005-T5 Allen bolt M8*20mm 1pcs, M8*25mm 1pcs
 AS-PEB-4 Panel End Bracket L60*W64mm Material: aluminum 6005-T5 Allen bolt M8*25mm 1pcs, M8*20mm 1pcs	 AS-PIB Panel Inter Bracket L=120/160mm Material: aluminum 6005-T5 Allen bolt M8*25mm 4pcs Self drilling bolt M6.3*25mm 2pcs Application: AS-R-18	 AS-PIB-2 Panel Mid Bracket L=80mm Material: aluminum 6005-T5
 AS-PIB-3 Panel mid bracket 50mm width Material: aluminum 6005-T5 Allen bolt M8*20mm 2pcs, M8*25mm 1pcs	 AS-PIB-4 Panel Inter Bracket L160*W64mm Material: aluminum 6005-T5 Allen bolt M8*25mm 2pcs, M8*20mm 2pcs	 AS-ST-1 Panel Inter Bracket L=115mm Material: aluminum 6005-T5 Allen bolt M8*20mm 1pcs Self drilling bolt M6.3*25mm 2pcs Application: AS-R-13
 AS-ST-2 Panel Inter Bracket L=40mm Material: aluminum 6005-T5 Allen bolt M8*20mm 1pcs Self drilling bolt M6.3*25mm 1pcs Application: AS-R-13	 AS-AL-RC Rail clip L43*W45.8*H42.3mm Material: aluminum 6005-T5 Allen bolt M8*25mm 1pcs	 AS-AL-RC-02 Rail clip L77*W45.8*H42.3mm Material: aluminum 6005-T5 Allen bolt M8*25mm 1pcs

 AS-AL-SC Stringer Clip L=90mm Material: aluminum 6005-T5 Allen bolt M8*30mm 2pcs	 AS-AL-SC-02 Stringer Clip L=72mm Material: aluminum 6005-T5	 AS-AL-PF-1 Panel fixing L130*W84mm Material: aluminum 6005-T5 Allen bolt M8*20mm 2pcs
 AS-W-BC-01 Panel Fixing L=30mm Material: aluminum 6005-T5 T bolt M8*20mm 1pcs	 AS-W-BC-02 Panel Fixing L=40mm Material: aluminum 6005-T5 Allen bolt M6.3*20mm 1pcs Application: AS-R-23	 AS-ST-3 Anti Slider L50*W44.6*H7.3mm Material: aluminum 6005-T5 Hex bolt M8*20mm 2pcs
 AS-ST-4 Anti Slider 20mm width Material: aluminum 6005-T5 Allen bolt M8*25mm 1pcs Application: AS-AUB-4	 AS-AP-1 Aluminum Pad W32*H8.5mm Material: aluminum 6005-T5	 AS-AP-2 Aluminum Pad L=40mm Material: aluminum 6005-T5
 AS-AP-4 Aluminum Pad L=40mm Material: aluminum 6005-T5	 AS-AL-UC U Clip L134mm Material: aluminum 6005-T5 Hex bolt M12*70mm 1pcs	 AS-UC U Clip L40*W68.4*H101mm Material: aluminum 6005-T5 Allen bolt M8*60mm 1pcs
 AS-SH Hook L=32mm Material: aluminum 6005-T5 Allen bolt M12*70mm 1pcs Self drilling bolt M6.3*25mm 2pcs	 AS-SH-2 Hook L=66.5mm Material: aluminum 6005-T5	 AS-AL03-BJ-2 Beam Jointer L=50/60mm Material: aluminum 6005-T5 Allen bolt M8*25mm 2pcs, M8*55mm 1pcs T bolt M8*20mm 2pcs
 AS-LPS Position clamp Cutting length=10mm Material: aluminum 6005-T5 Allen bolt M8*30mm 1pcs	 AS-PC Pipe Connector L=150mm Material: aluminum 6005-T5 Hex bolt M10*12mm 8pcs Socket set screw M8*10mm 8pcs	 AS-SSJ U95 pillar jointer L=70mm Material: aluminum 6005-T5 Hex bolt M10*30mm 2pcs, M10*75mm 2pcs



AS-WF-CJ
Panel / Corner Jointer
W39*H39mm
Material: aluminum 6005-T5
Allen bolt M6.3*20mm 1pcs
Application: Fence panel



AS-WF-PJ
Post Jointer
W20*H42.8mm
Material: aluminum 6005-T5
Allen bolt M6*65mm 1pcs
Application: Fence post



AS-PS
Pipe Sleeve
φ 60mm
Material: HDG steel
Hex bolt M12*35mm 4pcs,
M12*70mm 1pcs
Application: AS-TEP,
C62 bracing connection



AS-P60-PTB
Pipe Triangle bracket
L150*W68*H65.5mm
Material: HDG steel
Allen bolt
M10*30mm 2pcs
Hex bolt M12*90mm 1pcs



AS-C62-PTB / AS-C62-BTB
Post / Bracing Triangle bracket
L180*W48*H60mm
Material: HDG steel
Allen bolt M10*30mm 2pcs
Hex bolt M12*70mm 1pcs

• Other Steel Components



AS-BCP-C52
Base C52 Post
Base plate: L120*W120mm
C52 section: W41*H52mm
Material: HDG steel
Application: Flat roof / ground



AS-BCP-C62
Base C62 Post
Base plate: L120*W120mm
C62 section: W42*H61mm
Material: HDG steel
Application: Flat roof / ground



AS-BCP-C80
Base C80 Post
Base plate: L162*W162mm
C80 section: W80*H40mm
Material: HDG steel
Application: Flat roof / ground



AS-SLC-01
Steel L bracket
L200*W70*H70mm
Material: steel Q235
Hex bolt
M12*110mm 2pcs,
M12*160mm 2pcs



AS-SLC-02
Steel L Bracket
L120*W60*H160mm
Material: HDG Q235
Allen bolt M10*85mm 1pcs,
M10*30mm 3pcs
Application: Ground mount



AS-BK
Base kit
L200*W80*H190mm
Material: HDG steel
Hex bolt M12*30mm 3pcs



AS-ACP-B
Top Cap
φ 200mm
Material: HDG steel
Hex bolt M12*35mm 3pcs



AS-BLC
Pipe Cap
140*140mm
Material: HDG steel
Allen bolt M12*35mm 3pcs
with flange nut



AS-BLC-2
Top Cap
140*140mm
Material: HDG steel
Hex bolt M12*35mm 3pcs



AS-C6NC
C62 N Clip
L135*W45*H66mm
Material: HDG steel
Allen bolt M8*30mm 2pcs



AS-CP-48
Side truss
φ48mm
Material: HDG Q235



AS-CP-102
Post cap
φ102mm
Material: HDG steel Q235



AS-TCB
Pipe Cap
120*120mm
Material: HDG steel
Allen bolt M12*35mm 3pcs
with flange nut



AS-TED
Pipe Cap
120*120mm
Material: HDG steel
Hex bolt M12*35mm 3pcs
/ M12*70mm 1pcs with flange nut



AS-SJ
Steel Jointer
φ 60mm
Material: HDG steel



AS-I-A007
Base kit
L180*W70*H134.75mm
Material: HDG Q235
Hex bolt M12*35mm 2pcs



AS-I-A012
Connector
140x210x6mm
Material: HDG steel Q235
Hex bolt M12*35mm 6pcs,
M12*160mm 2pcs



AS-I-A015
Connector
140x200mm
Material: HDG steel Q235
Frage nut with flat washer
M12*90mm 2pcs,
Frage nut M12*150mm 3pcs



AS-TPJ-1
Pipe Jointer
φ 60/76mm
Material: HDG steel
Hexagon bolt M12*35mm 6pcs
with flange and spring washer nut



AS-TPJ-2
Pipe Jointer
φ 60mm
Material: HDG steel
Hexagon bolt M12*35mm 3pcs
with flange nut



AS-BPS-3
Open sleeve
φ60mm
Material: HDG steel



AS-I-A016
Connector
L74x42mm
Material: HDG steel Q235
Frage nut with flat washer
M12*80mm 2pcs,
M12*35mm 2pcs



AS-I-A017
Connector
L74x42mm
Material: HDG steel Q235
Frage nut with flat washer
M12*35mm 2pcs,
M12*80mm 2pcs



AS-I-A018
Rail Splice
L=200mm
Material: HDG steel Q235
Hex bolt M12x30mm 16pcs



AS-SF03-ST-IBC
Inter beam clip
180*150*175mm
Material:
HDG steel Q235



AS-SF03-ST-SBC
Side beam clip
180*150*175mm
Material:
HDG steel Q235



AS-UB
U bolt
M12*W88*H105mm
Material:
dacromet steel Q235



AS-SF-B
Bearing
φ48mm
Material: HDG steel Q235



AS-SF03-BTB
Triangle bracket
□ 30mm
Material: HDG steel Q235



AS-SPJ
Steel Post Jointer
Outer diameter: φ 48/60/76mm
Length=228mm
Material: HDG steel



AS-SPB-180
Steel Plate Bracket
L180*W140
Material: HDG steel
Application: C88 bracing connecting bracket



AS-SPB-280x130
Steel Plate Bracket
L280*W130mm
Material: HDG steel
Hex bolt M12*30mm 2pcs, M12*25mm 2pcs



AS-TCP
Cross pipe / front feet / back feet
φ 60mm
Material: HDG steel



AS-I-GSF114
Ground screw with wide spiral
φ 114x2500mm
Outer diameter: φ 48/60/76mm
Length: 1000mm-3000mm
Material: hot dipped galvanized steel

• Ground Screw

• ZM steel accessories:



AS-GS
Ground screw without flange
φ 76x2500mm
Outer diameter: φ 48/60/76mm
Length: 1000mm-3000mm
Material: hot dipped galvanized steel



AS-GSF
Ground screw with flange
φ 76x1600mm
Outer diameter: φ 48/60/76mm
Length: 1000mm-3000mm
Material: hot dipped galvanized steel



AS-GSF-89
Ground screw with flange
φ 89x2300mm
Outer diameter: φ 48/60/76mm
Length: 1000mm-3000mm
Material: hot dipped galvanized steel



AS-GSRS
Ground screw with Rolling spiral
φ 76x2000mm
Outer diameter: φ 48/60/76mm
Length: 1000mm-3000mm
Material: hot dipped galvanized steel



AS-GSWS
Ground screw with wide spiral
φ 76x3000mm
Outer diameter: φ 48/60/76mm
Length: 1000mm-3000mm
Material: hot dipped galvanized steel



AS-I-GS76
Ground screw with Rolling spiral
φ 76x2000mm
Outer diameter: φ 48/60/76mm
Length: 1000mm-3000mm
Material: hot dipped galvanized steel



AS-I-GSF68
Ground screw with flange
φ 68x1200mm
Outer diameter: φ 48/60/76mm
Length: 500mm-3000mm
Material: hot dipped galvanized steel



AS-I-GSF76
Ground screw with Rolling spiral
φ 76x2000mm
Outer diameter: φ 48/60/76mm
Length: 1000mm-3000mm
Material: hot dipped galvanized steel



AS-Z-A001
Tripod Triangle bracket
L150*W48*H65mm
Material: ZM steel
Allen bolt M10*30mm 2pcs
Hex bolt M10*70mm 1pcs
SUS304 / Steel Q235 T nut + plastic cup



AS-Z-A003-ZJ01
End Clamp
L=160mm
Material: ZM steel



AS-Z-A003-ZJ02
Mid Clamp
L=160mm
Material: ZM steel



AS-Z-A004
Rail splice
L=220mm
Material: ZM steel
2 flat + 1 spring washer + M12*35mm nut



AS-Z-A010
L60.5x40.5 connector
L60.5*W40.5mm
Material: ZM coated steel
Hex bolt M10*30mm 2pcs, M12*35mm 2pcs
Application: connect post and stringer



AS-Z-A016
Tripod Triangle bracket
W100*H28.9mm
Material: ZM steel
SUS304 / Steel Q235 T nut + plastic cup



AS-Z-A017
C41x62 splice
L200*W49.5*H58mm
Material: ZM Steel
Allen bolt M10*30mm with flange nut 4pcs
Application: AS-C41x41, AS-C41x52, AS-C41x62



AS-Z-A018
C80 splice
L200*W74.5*H32mm
Material: ZM Steel
Hex bolt M10*30mm 6pcs
Application: AS-C80



AS-Z-A019
L70x95 connector
L100*W70*H95mm
Material: ZM coated Steel
Hex bolt M10*30mm 3pcs
Application: connect post and stringer



AS.D-P001
L70x70 connector
L100*W70*H70mm
Material: ZM steel
Hex bolt M10*30mm 3pcs
Application: connect post and stringer



AS.D-P002
L100x50 connector
L160*W50*H100mm
Material: ZM steel
Hex bolt M10*30mm 2pcs, Hex bolt M12*35mm 2pcs
Application: connect post and stringer



AS.D-P005
L97.2x98 connector
W97.2*H98mm
Self tapping screw M6.3*25 2pcs
Material: ZM coated Steel
Application: connect post and stringer

AS-ZEC01

C80 panel end bracket
L115*W90*H13.5mm
Material: ZM steel
Allen bolt M8*25mm
2pcs (SUS304),
End clamp(Aluminum 6005-T5)



AS-ZMC01

C80 panel inter bracket
L115*W90*H13.5mm
Material: ZM steel
Allen bolt M8*25mm 2pcs(SUS304),
26.5mm slot width mid clamp
(Aluminum 6005-T5)

• Screw and Bolt

AS-BB-10-70

Anchor bolt
Spec.: M6*50, M10*70,
M10*90, M12*100
Material: SUS 304



AS-HB-10-200

Hanger bolt
Spec.: M10*200, M10*250,
M10*300
Material: SUS304



AS-SDB-5.5-L

Self Drilling Bolt
Spec.: M5.5*25
Material:
steel Q235/SUS304

AS-SDB-6.3-50

Self-drilling bolt
M6.3*50
Material: SUS 304



AS-SDB-6.3-L

Self Drilling Bolt
Spec.: M6.3*25, M6.3*75
Material: SUS304



AS-STB-6.3-L

Cutting thread selfing
tapping screw
Spec.: M6.3*25, M6.3*80,
M6.3*100
Material: steel Q235

AS-SAB-8-30-STN

M8*30 bolt set with steel nut and
plastic cup
Allen bolt M8*30, 35.3*20*4mm
Material: SUS304 / STEEL Q235 T nut,
plastic cup



• Plastic Cap

AS-PPC-08

Rail 08# plastic cap
L83.4*W78.4*H29mm
Material: PP



AS-PPC-13

Rail 13# plastic cap
L48.6*W70.6*H24.7mm
Material: PP



AS-PPC-14

Rail 14# plastic cap
L104.8*W60.3*H30mm
Material: PP



AS-PPC-17/E
Enforcement pipe plastic cap
L60*W35*H34.8mm
Material: PP



AS-PPC-17
Rail 16/17# plastic cap
L90*W67*H24.4mm
Material: PP



AS-PPC-20
Rail 20# plastic cap
L89.8*W50.1*H24mm
Material: PP



AS-PPC-21
Rail 21# plastic cap
L100*W47.8*H24.5mm
Material: PP



AS-PPC-23
Rail 23# plastic cap
L92.5*W54.4*H25mm
Material: PP



AS-PPC-C42
C42 plastic cap
L42*W20*H13.6mm
Material: PP



AS-PPC-C62
C62 plastic cap
L62*W41.5*H13.6mm
Material: PP



AS-PPC-P60
Pipe plastic cap
φ 60mm
Material: PP



AS-PPC-W-H03
H03 beam plastic cap
L104.5*W50.2*H25mm
Material: PP



AS-PPC-W-H04
H04 beam plastic cap
L111.3*W60.8*H25mm
Material: PP



AS-P-A015
C01 plastic cap
L42.14*W50.34*H21.78mm
Material: PP



AS-P-A023
GR05 plastic cap
L40.5*W40.5*H17.4mm
Material: PP

 **CASE STUDY**

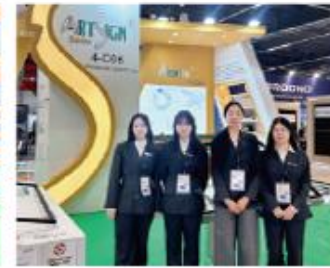




OUR EXHIBITION



2026 South Africa Exhibition



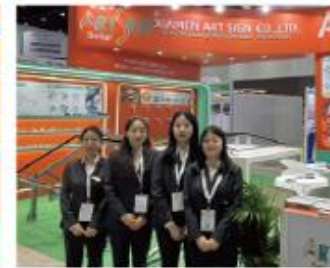
ENEX 2026



2025 ExpoSolar Colombia



Intersolar South America 2025



ASEW 2025



Solar & Storage Live Philippines 2025



The smarter E Europe 2025



Solar & Storage Live Africa 2025



Solar Solutions Amsterdam 2025



2024 Colombia Exhibition



2024 Brazil Exhibition



2024 German Exhibition