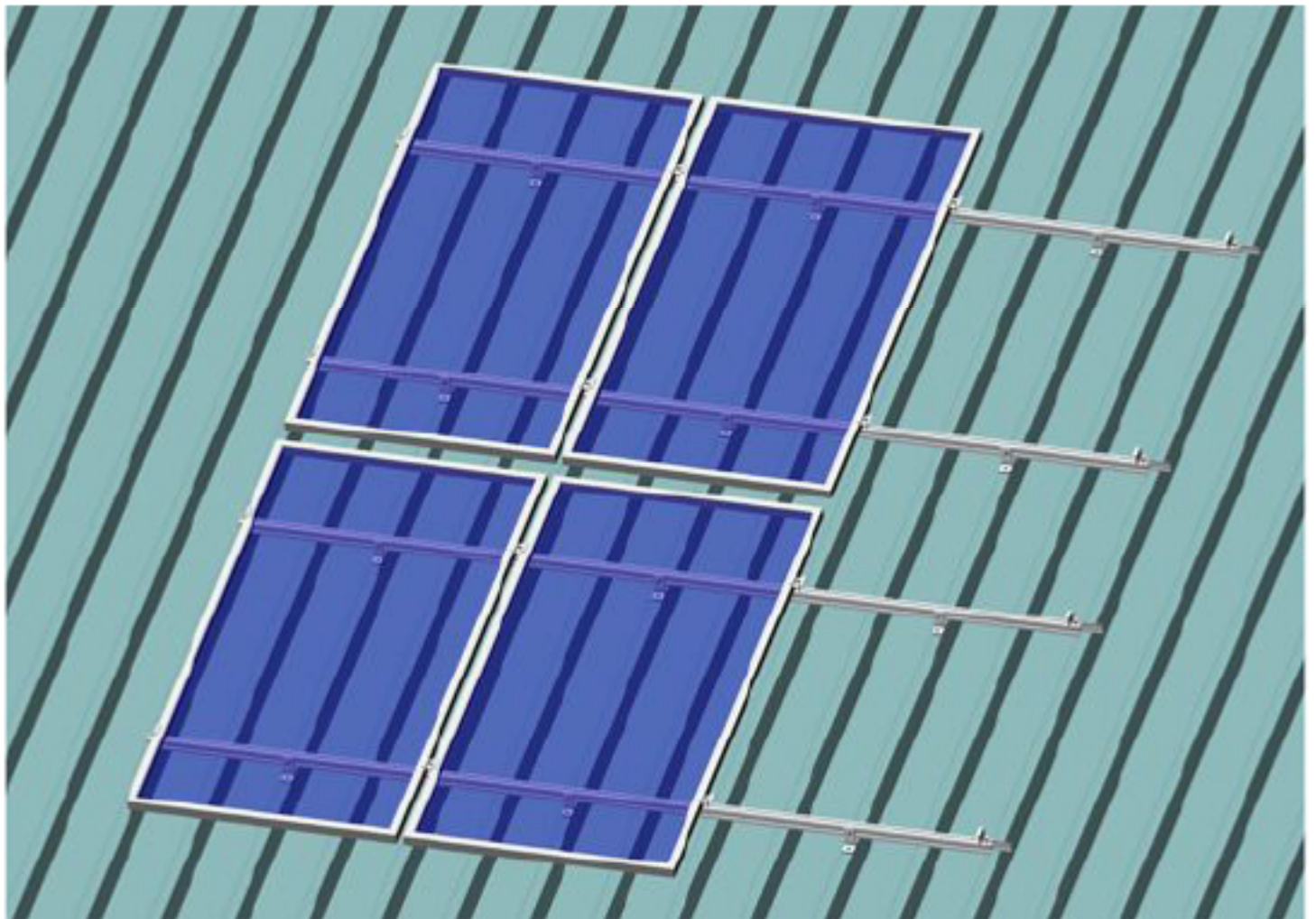







XIAMEN ART SIGN CO.,LTD.





Metal Roof Mounting System

Installation Guide



● Components List

	
<p>AS-R-09H Rail 9# W30.68*H46.10mm Material: aluminum 6005-T5</p>	<p>AS-R-09B Rail 9B# W30.68*H46.10mm Material: aluminum 6005-T5</p>
	
<p>AS-RS-09 Rail 9# splice L150*W9*H42.4mm Material: aluminum 6005-T5 Socket set screw: M8*10mm 2pcs Application: AS-R-09</p>	<p>AS-STMC T bolt mid clamp 40/50mm width Material: aluminum 6005-T5 Application: Framed panel, aluminum rail - T bolt series</p>
	
<p>AS-STEC T bolt end clamp 40/50mm width Material: aluminum 6005-T5 Application: Framed panel, aluminum rail - T bolt series</p>	<p>AS-RH-02 Roof hook 2# 40mm width Material: aluminum 6005-T5 Self-tapping screw M6.3*80 Application: metal / tin roof</p>

	
<p>AS-RH-02W Roof hook 2W# 50mm width Hanger bolt: M10*200 Application: metal / tin roof</p>	<p>AS-RH-105 Roof hook 105# 40/50/60mm width Material: aluminum 6005-T5 Self-tapping screw M6.3*80 Application: metal / tin roof</p>
	
<p>AS-RH-125 Roof hook 125# 40mm width Material: aluminum 6005-T5 Self-tapping screw M6.3*80 Application: metal / tin roof</p>	<p>AS-RH-150 Roof hook 150# 40mm width Material: aluminum 6005-T5 Self-tapping screw M6.3*80 Application: metal / tin roof</p>

● Installation Tools



Socket Wrench



Angle Grinder



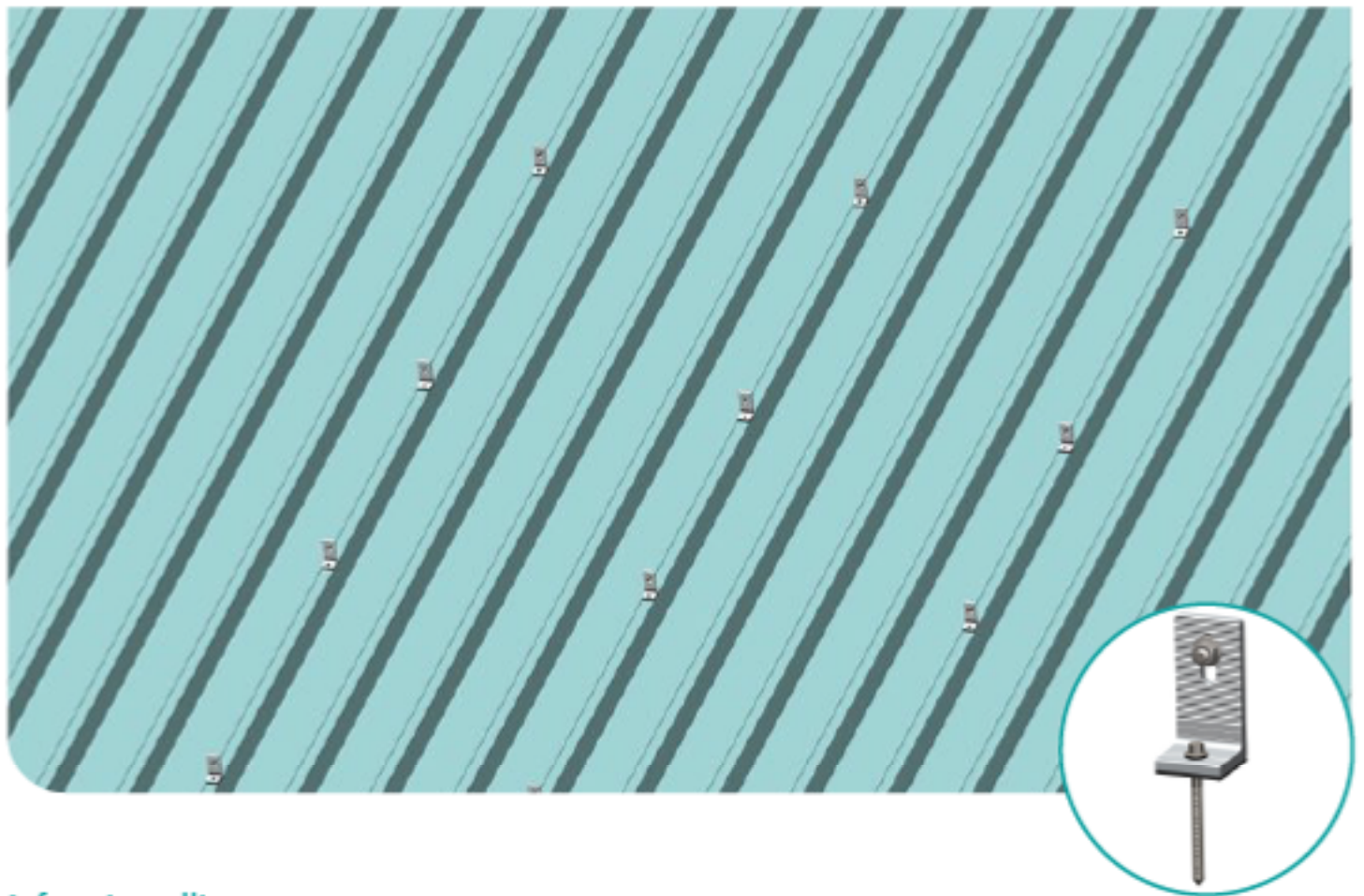
Tape Measure



Impact Driver

STEP 1: L feet installation.

Mark the installation points, use the tool to fix L feet on roof purlin via self tapping screw M6.3*80.



L feet installing steps:



Put the EPDM on the roof sheet in advance.



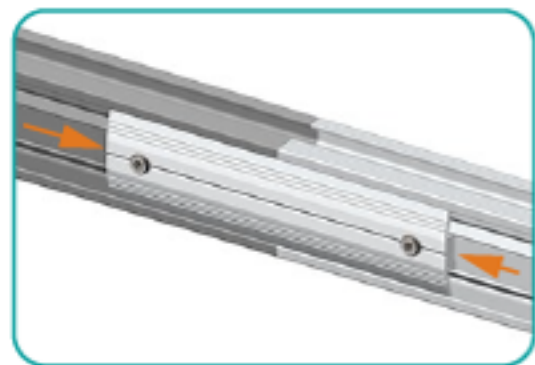
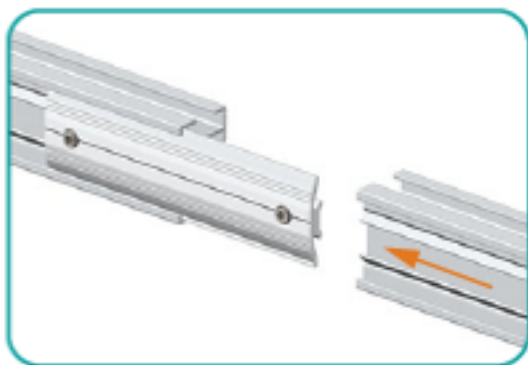
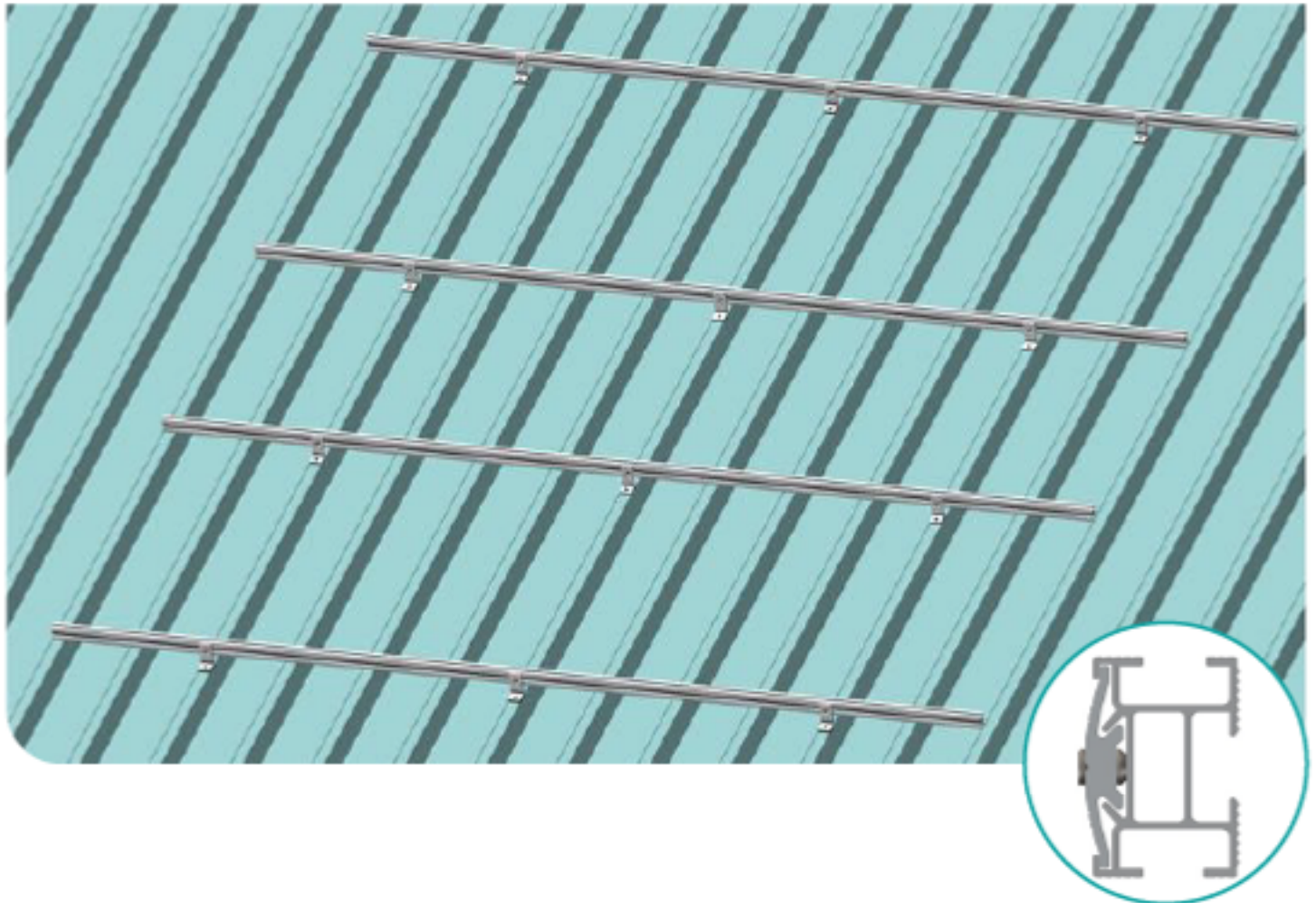
Fix the L feet above the rubber via self tapping screw M6.3*80.



Fasten firmly.

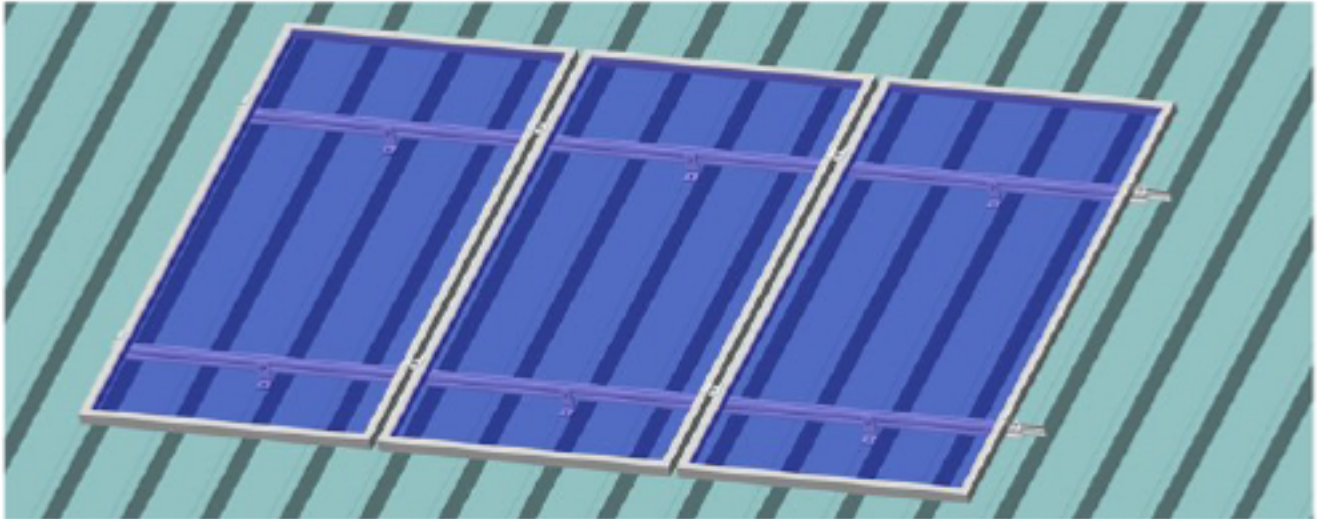
STEP 2 Rail installation.

Insert the T bolt into rail slot, and then fasten tightly by using socket wrench.

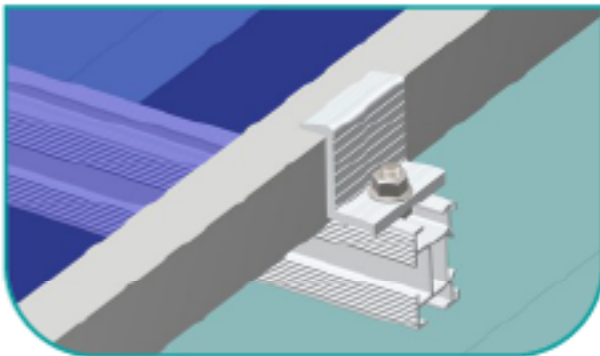


Rail splice for rails connection with socket set screw M8*10mm.

STEP 3 Panel installation.

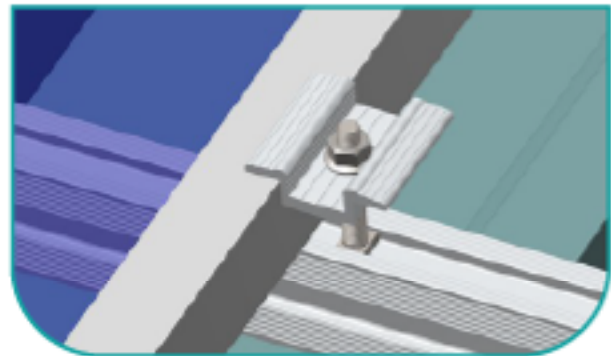


Use the end clamp for fixing the first and last panel on the rail, mid clamps are used for connection between 2 panels.



End clamp for fixing the side panels

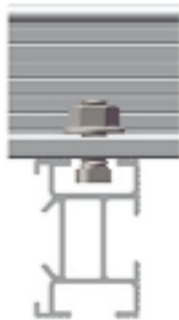
Insert the T bolt of mid clamp into T rail slot, fasten the allen bolt M8*25 firmly.



Mid clamp for fixing 2 panels

Fix the first and last solar panel on the rail with end clamp.

ART SIGN T bolt series rail installation tips.



Insert the T bolt into rail slot.



Fasten bolt firmly.